

**EASY ADMISSION APP – AN EASY WAY TO PREPARE FOR
ADMISSION**

BY

**SAIKAT MIA
ID: 191-15-12983**

AND

**MD. ABDULLAH MASUM
ID: 191-15-12986**

This Report Presented in Partial Fulfillment of the Requirements for the
Degree of Bachelor of Science in Computer Science and Engineering

Supervised By

Lamia Rukhsara
Senior Lecturer
Department of CSE
Daffodil International University

Co-Supervised By

Md. Azharul Islam Tazib
Lecturer
Department of CSE
Daffodil International University



DAFFODIL INTERNATIONAL UNIVERSITY

DHAKA, BANGLADESH

JANUARY 2023

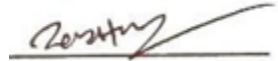
APPROVAL

This Project titled “**Easy Admission – “An easy way to prepare for admission”**”, submitted by **Saikat Mia & Md. Abdullah Masum** to the Department of Computer Science and Engineering, Daffodil International University, has been approved for its style and substance as well as being regarded as satisfactory for the partial fulfillment of the criteria for the degree of B.Sc. in Computer Science and Engineering. The presentation was held on October 23, 2023.

BOARD OF EXAMINERS

Dr. Touhid Bhuiyan
Professor and Head

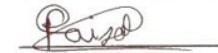
Department of Computer Science and Engineering
Faculty of Science & Information Technology
Daffodil International University



Chairman

Dr. Md. Zahid Hasan
Associate Professor

Department of Computer Science and Engineering
Faculty of Science & Information Technology
Daffodil International University



Internal Examiner

Fahad Faisal
Assistant Professor

Department of Computer Science and Engineering
Faculty of Science & Information Technology
Daffodil International University



Internal Examiner

Dr. Ahmed Wasif Reza
Associate Professor

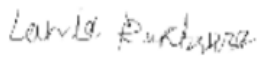
Department of Computer Science and Engineering
East West University

External Examiner

DECLARATION

We hereby declare that we have implemented this project under the supervision of **Lamia Rukhsara, Senior Lecturer, Department of CSE Daffodil International University**. We further declare that this project or any part thereof has not been submitted elsewhere for the award of any degree or diploma.

Supervised by:

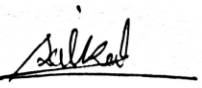


Lamia Rukhsara
Senior Lecturer
Department of Computer Science and Engineering
Daffodil International University

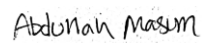
Co-Supervised by:

Md. Azharul Islam Tazib
Lecturer
Department of Computer Science and Engineering
Daffodil International University

Submitted by:



Saikat Mia
ID: 191-15-12983
Department of Computer Science and Engineering
Daffodil International University



Md. Abdullah Masum
ID: 191-15-12986
Department of Computer Science and Engineering
Daffodil International University

ACKNOWLEDGEMENT

First of all, we express our heartiest thanks and gratitude to Almighty God for his divine blessings which enable us to successfully complete the final year project.

We are appreciative of Lamia Rukhsara, Lecturer, CSE Department, Daffodil International University, Dhaka, and greatly indebted to her. Our leader has extensive understanding of "Web Applications" and a strong interest in seeing this project through. This endeavor was made possible by her never-ending patience, professional direction, constant encouragement, frequent and energetic monitoring, constructive criticism, helpful suggestions, reviewing numerous subpar versions and correcting them at all levels.

We would like to extend our sincere gratitude to Professor Dr. Touhid Bhuiyan, Head of the CSE Department, for his kind assistance in finishing our project and also to other faculty members and staff of CSE Department of Narcissus International University.

We want to express our gratitude to all of the Daffodil International University classmates who took part in this discussion while finishing their course work.

Finally, we must respectfully appreciate our parents' unwavering help and endurance.

ABSTRACT

About approximately around half of million students appear for the entrance exam every year. More than half of them are from outside the city. At this time various universities issue their circulars but for a student who lives far away from the city or places where there are no cyber cafes nearby, they face a tense situation. We make Easy Admission Apps to help most students. Easy Admission is a platform to guide and assist university aspirants with admission related updates and services in one platform. Every year in our Bangladesh around 8 lakh students participate in the entrance exam and the number is increasing day by day. There is no separate examination procedure here. And each university has its own unique admission system. And all the information is scattered. Therefore, due to this system of scattered information, the admission candidates face various problems. Many times the information does not reach them at the right time and the process of filling the form becomes useless for many of them. This will be an easy way for many students to get help and guidance of Easy Admission.

TABLE OF CONTENTS

CONTENTS	PAGE
Approval Page	i
Declaration	ii
Acknowledgements	iii
Abstract	iv
List of Figures	
List of Tables	
CHAPTER	
CHAPTER 1: Introduction	1-3
1.1 Introduction	
1.2 Motivation	
1.3 Objectives	
1.4 Expected Outcome	
1.5 Project Management and Finance	
1.6 Layout of the Report	
CHAPTER 2: Background	4-5
2.1 Terminologies	
2.2 Related Works	
2.3 Comparative Analysis	
2.4 Scope of the Problem	

2.5 Challenges

CHAPTER 3: Requirement Specification **6-10**

3.1 Business process Modeling

3.2 Requirement Collection and Analysis

3.3 Use Case Modeling and Description

3.4 Logical Data Model

3.5 Design Requirement

CHAPTER 4: Design Specification **11-14**

4.1 Design of Front-End

4.2 Back-End Design

4.3 Interaction Design and User Experience (UX)

4.4 Implementation Requirements

CHAPTER 5: Implementation and Testing **15-31**

5.1 Implementation of Database

5.2 implementation of Front-End design

5.3 Testing Implementation

5.4 Test Result and Reports

CHAPTER 6: Impact on Society, Environment &Sustainability **32-33**

6.1 Impact on Society

6.2 Impact on Environment

6.3 Ethical Aspects

6.4 Sustainability Plan

CHAPTER 7: Conclusion and Future Scope **34-34**

7.1 Discussion and Conclusion

7.2 Scope for Prospect Development

REFERENCES **35-36**

APPENDIX

LIST OF FIGURES

Figure 4.3: Business process Modeling	6
Figure 4.4 User Diagram	8
Figure 4.5 Use Case Modeling	9
Figure 4.6 Logical Data Model	10
Figure 4.7 Login Page	17
Figure 4.8 Home Page	18
Figure 4.9 Online Book	19
Figure 4.9 Previous Question	20-21
Figure 4.9.2 Admission Calendar	22
Figure 4.9.3 Nearby Places	23
Figure 4.9.4 Top University	23
Figure 4.10 Public University	25
Figure 4.9.4 Private University	26

Figure 4.10 Medical University	27
Figure 4.11 Engineering University	28
Figure 4.12 Notice Board	29
Figure 4.12 Student Profile	30
Figure 4.12 Navigation Bar	31

CHAPTER 01

Introduction

1.1 Introduction

Technology is causing the world to change quickly. Technology is the application of knowledge to reach practical goals in a specifiable and reproducible way. The word technology may also mean the product of such an endeavor. The world we live in today is modern. Every tool we use every day is interconnected with technology. Easy Admission is a project that aims to create a mobile-friendly platform. Where students can easily know about all the issues related to admission through one platform. There will be admission calendar, there will be previous questions, there will be information about the best universities in Bangladesh, both public and private. There will also be online books so that students can easily read books of their choice from there. In short, we will create a platform that students can operate through mobile phones and get all kinds of help for admission.

1.2 Motivation

Nowadays especially in villages we see when this admission time comes almost maximum students rush to cyber cafe to fill the admission form. It wastes their time as well as their money. They waste their valuable time rushing through this form fill-up. Many people in the city do not know the process of form filling, so they also rush to the cyber cafe. Considering all these considerations we have not decided to bring all the admission platforms into one platform. This will benefit our students in many ways. They used to waste time going out for the form fill up, now they can select the varsity for the form fill-up as per their choice by sitting at home through their mobile phone. They can also check the form fill deadline of their preferred varsity there. And they can also take admission preparation there. There will be all previous admission exam questions for their better preparation. They will also get a free consultancy where they can call and directly contact us if they face any problem in form fill-up.

1.3 Objectives

The objectives of Easy Admission: Bringing all admission systems under one platform.

To implement the goal that students can fill up the form by themselves in an easy way.

- To implement the goal that students can prepare well for their admission exam.
- Students can read free books from here for their admission preparation.
- Students can contact us directly if they face any problem related to admission.
- Students can easily know about the top universities of the country from here.

1.4 Expected Outcome

From this Easy Admission – A simple way to prepare for admission we expected these results:

- Students will save time.
- They can do their own work using technology.
- They can take good preparation from here.
- Students can get a clear idea about top universities.

1.5 Project Management and Finance

After our project is complete, we will publish it. We will work with the students who are facing problems like form filling, admission coaching, buying admission book etc due to money problem.

1.6 Layout of the Report

The Easy Admission report is divided into 5 sections. Each part will talk about different parts of "Easy Admission". Each segment has different sections that explain each segment in details.

CHAPTER 1: Introduction

This part talks about the fundamental theoretical considerations driving our undertaking. Here comparably examine our undertaking inspiration, targets, and anticipated outcomes.

CHAPTER 2: Background

This section highlights related stages and the problems they are trying to solve. talks about their inconveniences as well. Additionally, how our project is resolving such problems.

CHAPTER 3: Requirement Specification

This section talks about requirements to develop Easy admission Application. This section includes the diagram of each component that is used to develop Easy Admission.

CHAPTER 4: Design Specification

This section talks about Front-End, Back-End design for the Easy Admission Application.

CHAPTER 5: Implementation and Testing

This section talks details about Front-End, Data base design for the Easy Admission Application.

CHAPTER 6: Impact on Society, Environment and Sustainability

This section talks about Impact on society, environment for Easy Admission App.

CHAPTER 7: Conclusion and Future Scope

This part discusses the end and Prospect degree of our project.

CHAPTER 02

Background

2.1 Terminologies

Easy Admission– Easy Admission is a project where we want to bring admission on one platform and which our students can manage easily through their mobiles. And from there they can prepare and get admitted. There will also be online books, previous admission exam questions. There will be information of top universities. And there will be direct contact with us and there will be a notice board.

2.2 Related Work

There are more apps for this admission. Those platforms are also quite good. But along with the advantages there are also some disadvantages. There they are not notify when any information related to admission is updated but we have added a notice board in our apps where we will inform all the updates. If students face any problem related to form fill-up, they can't directly contact us on other platforms but our app users can contact us directly.

Also, these platforms sometimes charge a certain amount of money as their commission. Also, they have some complex user interface for which not every type of user can use their web platform very easily.

In case our platform Easy Admission uses a very simple user interface so that every type of user can use that.

And most important what makes us different is we didn't charge a single penny for application charge if they do through our apps, means application charge is totally free doesn't matter how many they apply.

Some related online Admission platform is written below:

- Admission Assistant.
- Admission Warriors.

2.3 Comparative Analysis

We have studied more project like us but all of them are comparatively same, which makes us different is we give some feature is totally for free and those features is not available in other project in compare with us and many of them are paid but we are available with free for student service.

2.4 Scope of the Problem

Mainly in admission time rural areas students faced so many difficulties. our app helps those Students to solve their problem with free cost and so they can take better preparation for their admission. But our app is available for all to help them without harassment and they can use it from anywhere they stay.

2.5 Challenges

Every project face some of difficulties to implementation. We used java to implement our apps and faced many errors while run the project and after so many difficulties we overcome those errors and make this for students.

CHAPTER 03

Requirement Specification

3.1 Business process Modeling

Business process modeling is the activity of representing business processes in order to analyze, improve and automate current business processes.

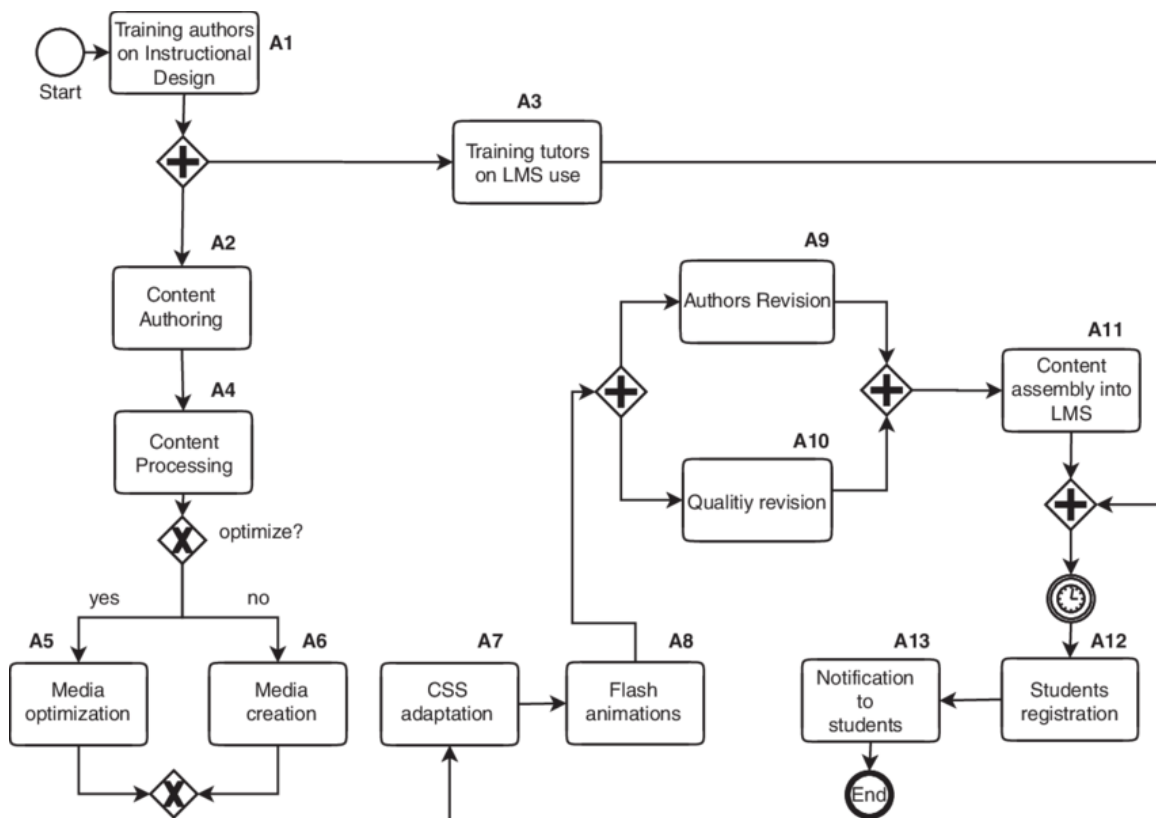


Figure 3.1: Process of Business Modeling

3.2 Requirement Collection and Analysis

I have used following software's to build the Easy Admission.

- OS: Android
- Apps Design: photoshop, photo Editor.
- Language: Java.
- Style: Xml.
- Tools: Android Studio, Git, GitHub

List of Used Software's to run the application:

- Operating System: Any modern Android.
- Browser: Any web browser like Firefox, Google Chrome, Safari etc.
- Network: Wi-Fi or Cellular Data

Analysis:

Easy Admission platform users can perform the following operations in the Easy Admission application:

1. Students will see a login page when they first log into the app.
2. Then if their account is open they can login directly and if not they have to open account.
3. Students can know about their preferred university in this app and can prepare for admission in this app.

4. When the admission time comes and the universities release their forms, students can fill the form through this app.
5. Students can contact us directly if they face any problem.

User Diagram:

This is a simple user diagram. The image below will represent how the app will work, a diagrammatic representation of how students will use the app.

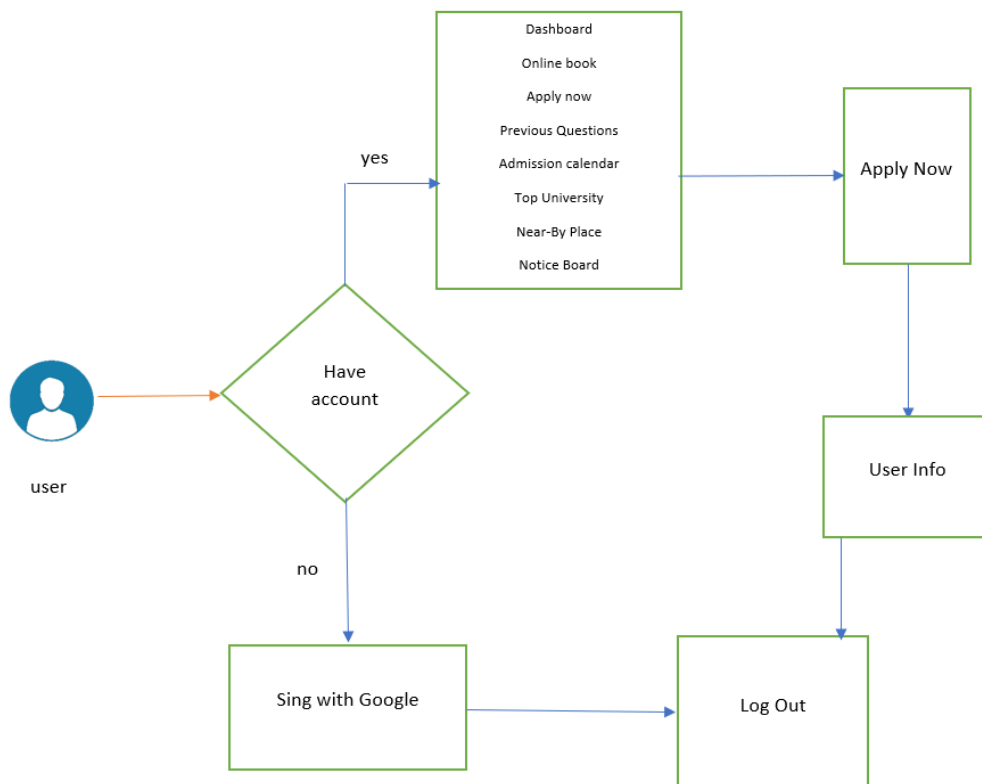


Figure 3.2: User Diagram

3.3 Use Case Modeling and Description

A use-case model is characterized as a representation of how users engage with a technology to address a challenge. As a result, the use case model outlines the user's objective, their interaction with the system, and the system behavior necessary to achieve those objectives.

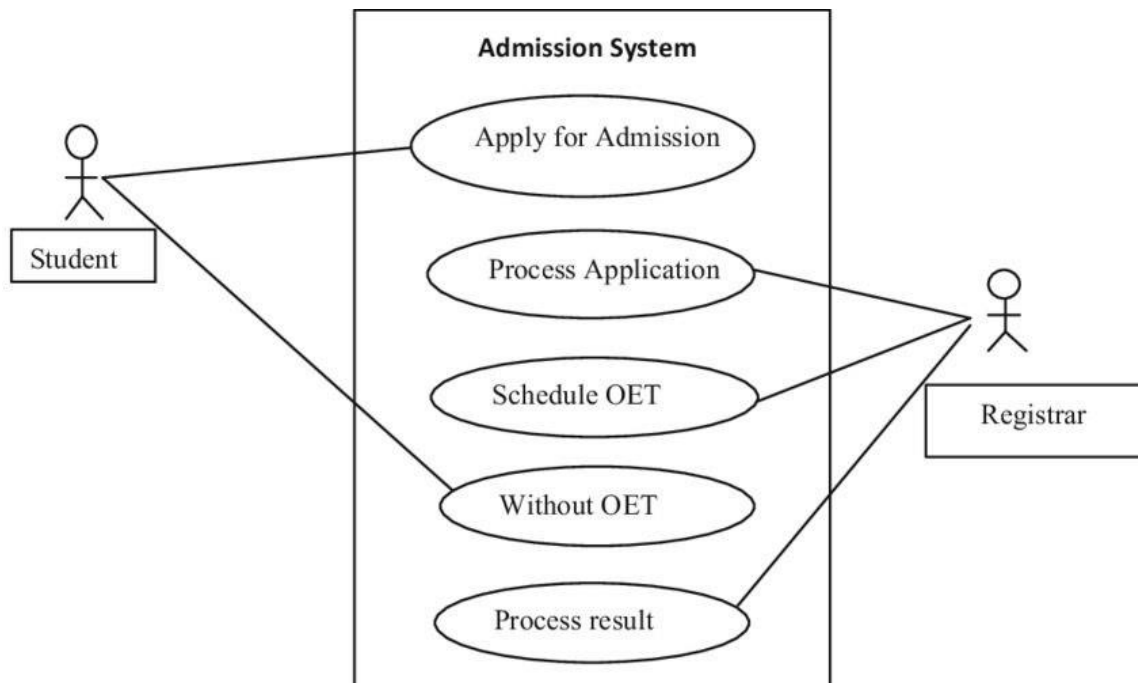


Figure 3.4: Use Case Modeling

3.4 Logical Data Model

A logical data model, often called a logical schema, is a data model for a certain problem domain that is established using relational tables and columns, object-oriented classes, or XML tags as opposed to a particular database management software or storage technology.

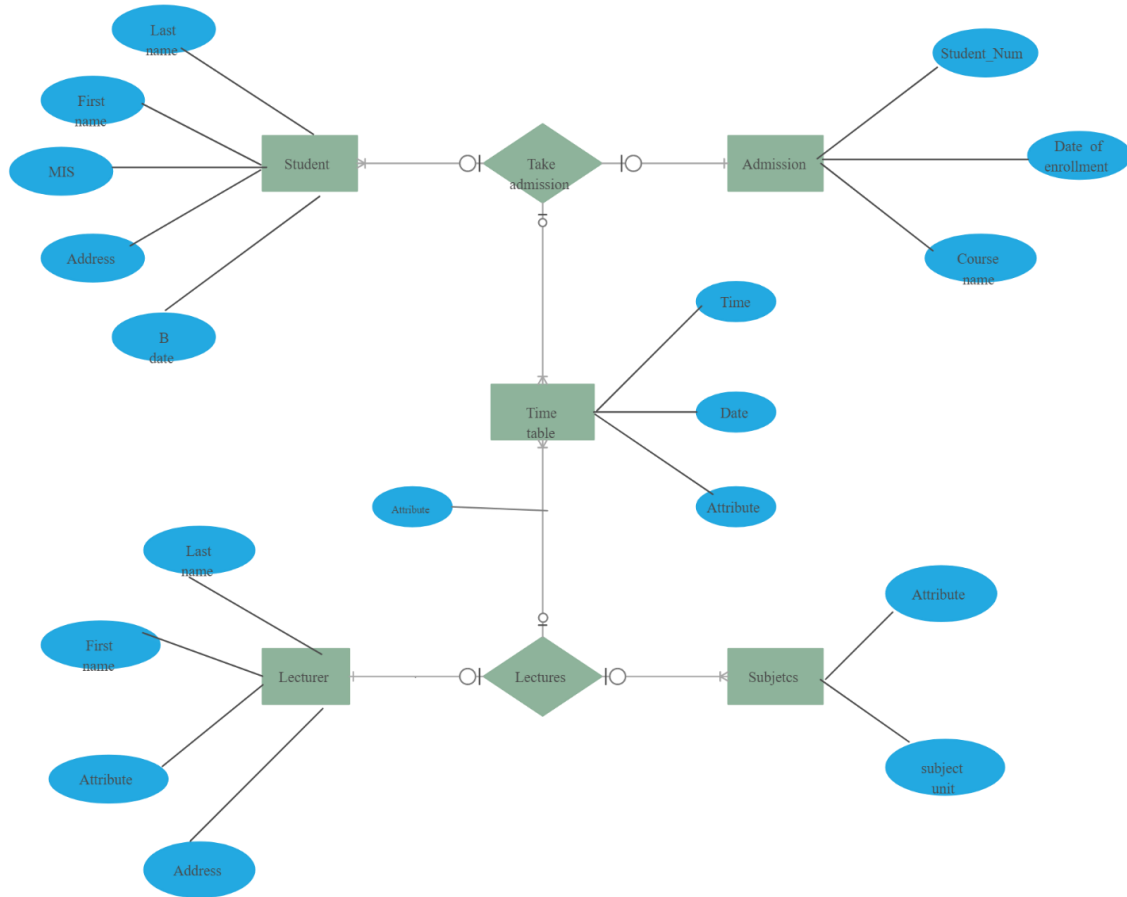


Figure 3.4: Logical Data Model

3.5 Design Requirement

- OS: Android
- Apps Design: photoshop, photo Editor.
- Language: Java.
- Style: Xml.
- Tools: Android Studio, Git, GitHub

CHAPTER 04

Design Specification

4.1 Design of Front-End

The heart of an app is its front end. Users are initially attracted to an application because of this. We developed an attractive and user-friendly front-end for Easy Admission. The frontend application, often known as the application's interface, is the layer or component of an application that the user may use, view, and interact with through buttons, images, interactive components, navigational menus, and text. For Front-End we use in our app XML.

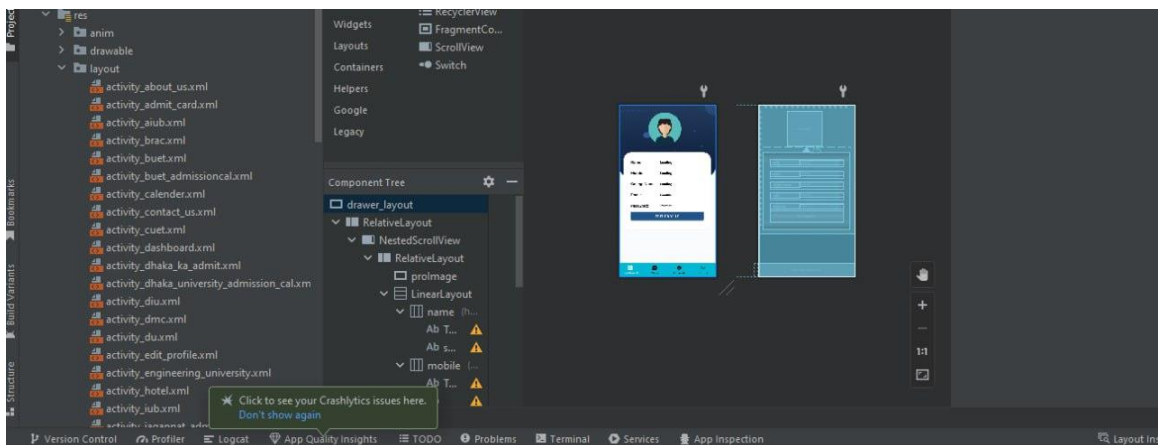
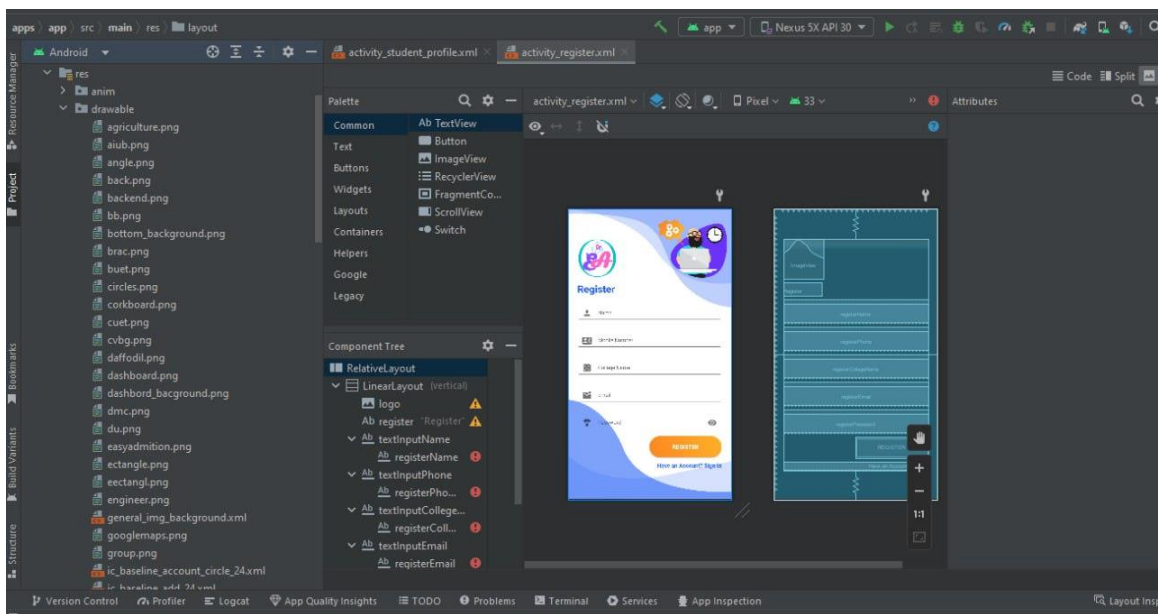
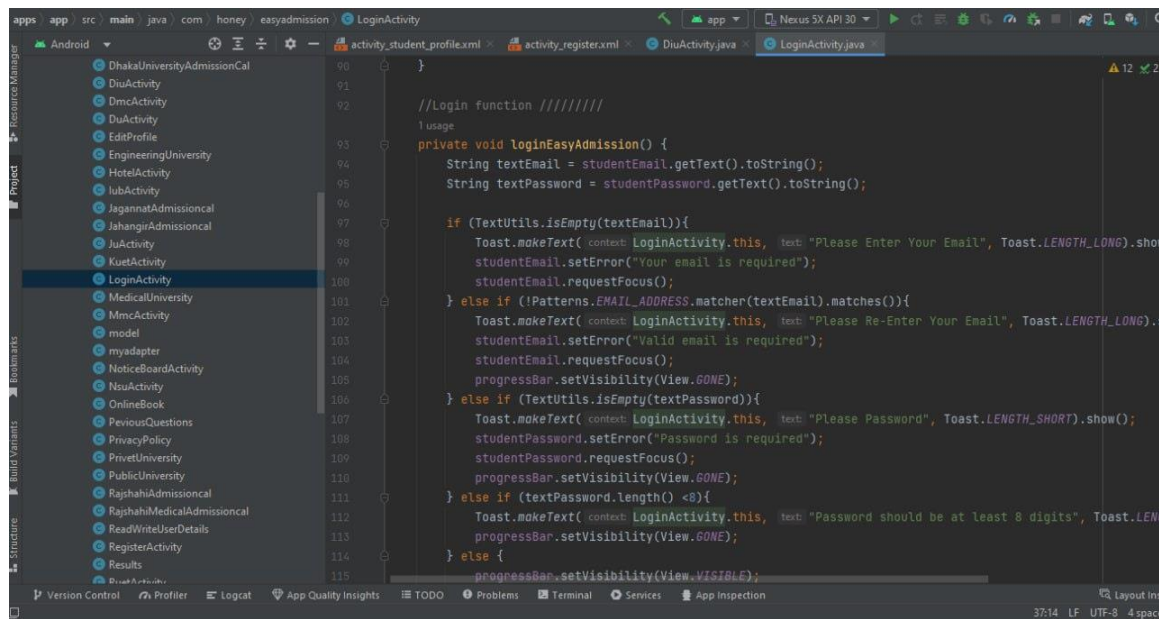


Figure 4.1: Front-End

4.2 Back-End Design

The process of developing the server-side logic that powers the background processes of websites and apps is known as back-end development. Every piece of code needed to create the database, server, and application is contained in it. A back-end web developer can have the expertise you need to start your next web project, including knowledge of database migrations, API integrations, and setting up server-side technologies. For Back-End we use in our app Java.



```
90     }
91
92     //Login function //////////
93     1 usage
94     private void loginEasyAdmission() {
95         String textEmail = studentEmail.getText().toString();
96         String textPassword = studentPassword.getText().toString();
97
98         if (TextUtils.isEmpty(textEmail)){
99             Toast.makeText(context, LoginActivity.this, text: "Please Enter Your Email", Toast.LENGTH_LONG).show();
100             studentEmail.setError("Your email is required");
101             studentEmail.requestFocus();
102         } else if (!Patterns.EMAIL_ADDRESS.matcher(textEmail).matches()){
103             Toast.makeText(context, LoginActivity.this, text: "Please Re-Enter Your Email", Toast.LENGTH_LONG).show();
104             studentEmail.setError("Valid email is required");
105             studentEmail.requestFocus();
106             progressBar.setVisibility(View.GONE);
107         } else if (TextUtils.isEmpty(textPassword)){
108             Toast.makeText(context, LoginActivity.this, text: "Please Password", Toast.LENGTH_SHORT).show();
109             studentPassword.setError("Password is required");
110             studentPassword.requestFocus();
111             progressBar.setVisibility(View.GONE);
112         } else if (textPassword.length() < 8){
113             Toast.makeText(context, LoginActivity.this, text: "Password should be at least 8 digits", Toast.LENGTH_SHORT).show();
114             progressBar.setVisibility(View.GONE);
115         } else {
116             progressBar.setVisibility(View.VISIBLE);
117         }
118     }
119 }
```

Figure 4.2: Back-End

4.3 Interaction Design (UX)

In today's digital world, software developers are becoming more creative every day. The usage of efficient school administration software continues to benefit educational institutions in streamlining their operations.

In contrast to decades before, students today employ modern technologies to educate themselves and discover new knowledge. Also benefiting from these technological advancements are their parents and even the school administration.

The core of interfaces is user interface (UI) design. Here, appearance or fashion are the key factors.

The best designers concentrate on making enjoyable and user-friendly interfaces. To put it succinctly, user interface (UI) is the special resource related to user interaction. For example, UI may incorporate concepts like visual design elements. Colors and typography are a couple of these.

The user experience, on the other hand, is the outcome of a user's encounter with a product or service (UX). This shows that the user experience includes more than just the user interface. The UI is simply one component of the wonderful end-user experience that is created.

4.4 Implementation Requirements

For front-end we use xml. For back-end we use here java. For database we use here firebase database.

CHAPTER 05

Implementation and Testing

5.1 Implementation of Database

By enabling secure access to the database directly from client-side code, the Firebase Realtime Database enables you to create robust, collaborative apps. Data is locally stored, and real-time events continue to happen even when the user is offline, providing a responsive experience. We use Firebase Database in our app to upload PDF files, books, questions, and other content.

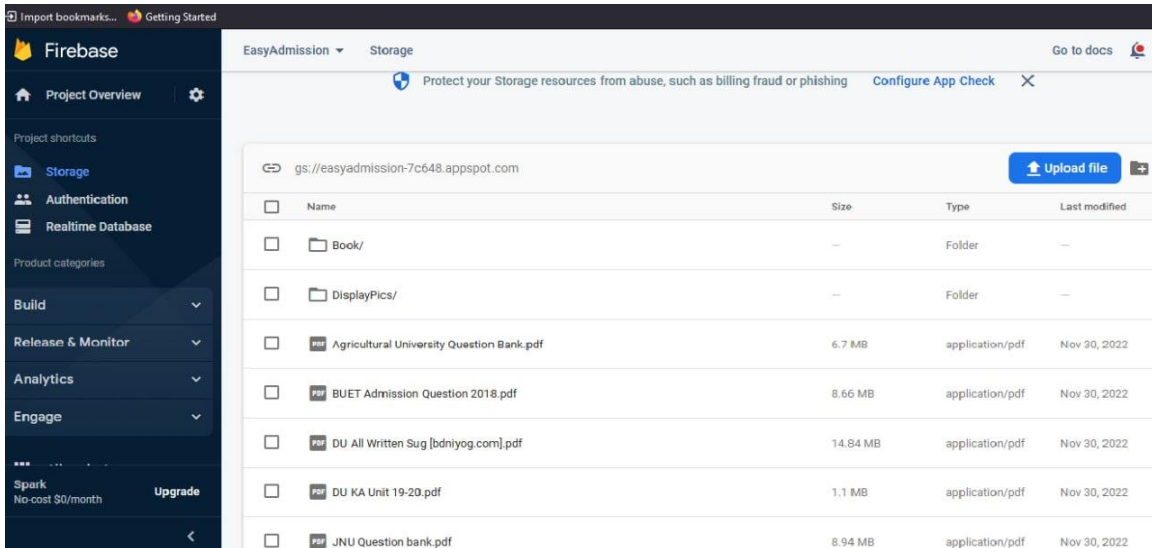


Figure 5.1: Firebase Database

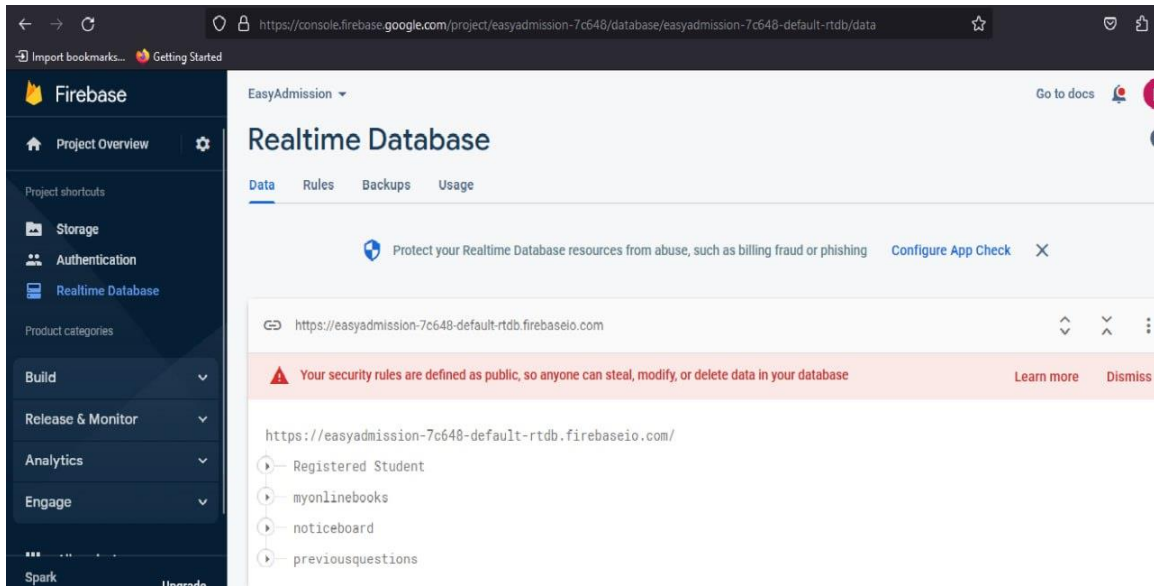


Figure 5.1.2: Firebase Database

5.2 implementation of Front-End design

should be tested before being used by consumers or clients. We must investigate the runtime blender and combine the two-timing issues. Additionally, we need to look at how well the work has been executed. Both valid and faulty entries must have their accuracy confirmed. Illegal circumstances won't be accepted; only legal admittance will be accepted. If these two logs work well, we can be sure that our system is fault-free. We must also verify the outcome since it coincides with the outcome of our will. We need to make sure that our system's features and options are all useable before we test our project. We tested the potential solutions and contrasted the results with the predictions.

5.2.1 Login Page

1. A Sign in Button that will be used to sign in the Easy Admission platform.

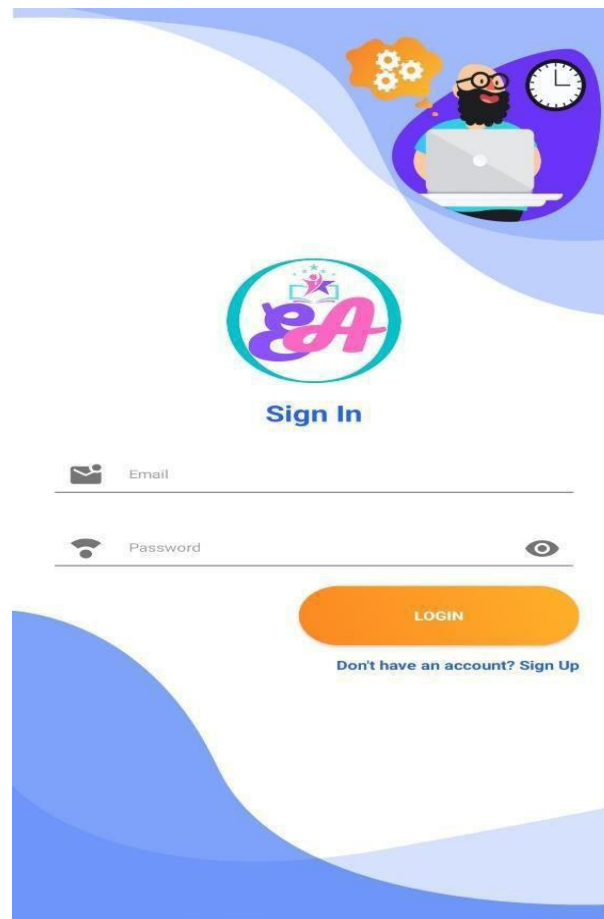


Figure 5.2.1: Formation of Home Component before login

5.2.2 Home Page

This figure is home page for this Apps. This home page we can see it after login page. Below Figure is formation of the home component after a user is logged in.

In this page there are many components.

- A Navigation Bar.
- Apply Now Component.
- Online Book Component.
- Previous Question.
- Admission calendar.
- Nearby Place.
- Top University.
- Notice Board.
- Student Profile.

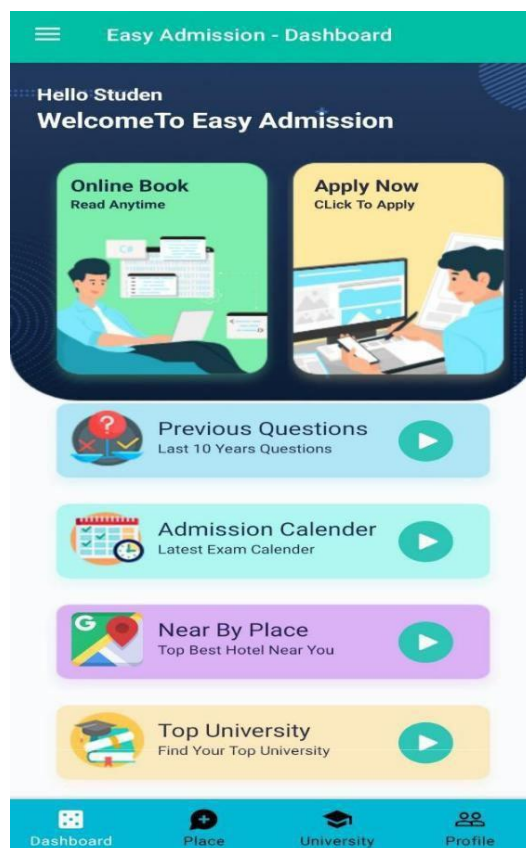


Figure 5.2.2: Formation of Home Component after login

5.2.3 Online Book

The online method of studying has several advantages. It is very convenient because you can sit in your room and read as much as you want. During an epidemic like COVID when we all stayed at home for safety and our offline platforms were off, we used to complete many of our tasks on online platforms. Here students can sit in their room and prepare for admission through our apps.

Here are some advantages of online reading:

- 1) Online study saves your precious time and money.
- 2) You can study online from any corner of the world.
- 3) Variety of courses are available while studying online.
- 4) Online study is for those students who can generate self-discipline.



Figure 5.2.3: online books

5.2.4 Previous Question

In today's increasingly competitive environment, every student strives to excel academically while gaining admission to prestigious universities through entrance exams. One of the most common methods to familiarize yourself with the exam pattern is to solve as many previous year questions as possible. Previous year questions help students familiarize themselves with the exam structure but also help them gain confidence in the subject. Questions are often interchanged and repeated, which can help a student get several guaranteed marks/scores in the exam. As a result, it is a favorable conclusion that practicing on previous year question papers is one of the most effective ways to prepare for the exam.

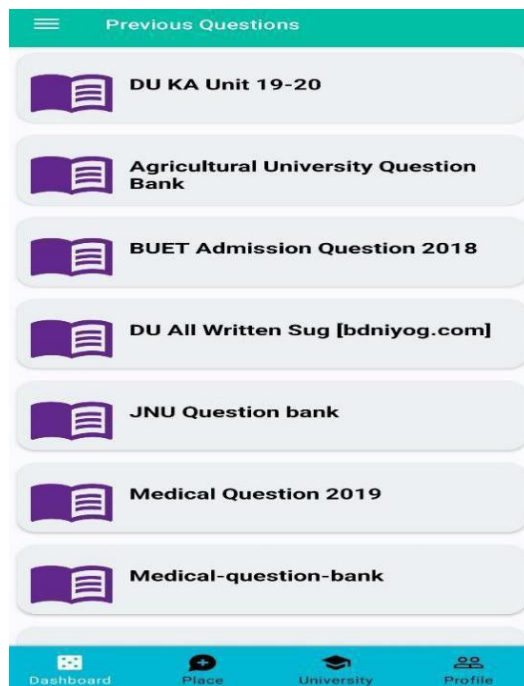


Figure 5.2.4: previous questions

In this section we have added previous admission exam questions. Students can now prepare for their admission exam from here.

← DU KA Unit 19-20

পাঠ্য বিষয়বিভাগের ২০১৯-২০২০

মতঃ ১.১ নম্বর ১০০ টি প্রশ্ন

ফিজিক্স (Physics) MCQ সেকশন

০১. দুইটি ভেক্টর A = 3i - 3j এবং B = 4i - 5k, এন স্ক্যালারী কোণ কত? (What is the angle between the two vectors A = 3i - 3j and B = 4i - 5k?)

A. 60° B. 30° C. 45° D. 50°

০২. 5 m উচ্চতা হতে একটি বলকে 20 m/s বেগে উল্লম্বভাবে উপরে 30° কোণে উল্লেখ করে ফেলান এবং উপরে উল্লেখ করে ফেলান কত? (A ball is thrown upward with an angle of 30° with the horizontal line from a height of 5 m with a velocity of 20 m/s. What will be the time of flight of the ball?)

A. $\frac{10 + \sqrt{198}}{9.8}$ s B. $\frac{10 - \sqrt{198}}{9.8}$ s
C. $\frac{10 + \sqrt{198}}{9.8}$ s D. $\frac{10 + \sqrt{2}}{9.8}$ s

০৩. একটি স্থির স্রোত, স্থানীয় স্থিতি-সম্পন্ন বিন্দুতে সর্বদা 1 m, এর স্রোত দেখা দেয়। (In a standing wave, the separation between two adjacent nodes is 1 m. What is the wavelength of it?)

A. 25 cm B. 50 cm
C. 100 cm D. 200 cm

০৪. দুইটি কণিকা সরল-সমান্তরাল গতি করে থাকে: $x_1 = A \sin \omega t$, $x_2 = A \cos \omega t$, যে কোন সময়ে তাদের বেগের মধ্য পার্থক্য কত হবে? (Two particles are oscillating at simple harmonic motion. If their displacements are described by $x_1 = A \sin \omega t$ and $x_2 = A \cos \omega t$, what will be the phase difference between them at any instant?)

A. $\frac{\pi}{2}$ B. π C. $\frac{\pi}{4}$ D. $\frac{\pi}{6}$

০৫. কাগজের উপর দিকে তাকালে একটি স্লাব (সংকীর্ণতা 1.5) স্রোত উপরে থেকে কাগর দিকের দিকে স্রোতের স্রোতের উপরে একটি স্লাব কাগর উপরে থেকে 6 cm নিচে দেখা যায়। কত ব্যক্তি দেখা দেয়? (When you look downward from the top of a thick glass (refractive index 1.5) slab used as a paper weight, a mark on the paper is seen 6 cm below from the top of the slab. What is the thickness of the glass slab?)

A. 4 cm B. 6 cm C. 9 cm D. 12 cm

০৬. সিরিস বর্তনীতে পরিপ্রবাহ I , এর মান কত? (What is the value of the current I , in the circuit below?)

A. 0.2 A B. 0.4 A C. 0.6 A D. 1.2 A

০৭. একটি ঘড়ী ২০০ K এবং 245 K তাপমাত্রায় ঘূর্ণিত করতে সক্ষম পরিমাণে 1 kcal তাপ গ্রহণ করে। (A Carnot engine is operated between two reservoirs at temperatures of 500 K and 250 K. If the engine receives 1 kcal of heat from the source in each cycle, the amount of heat rejected to the sink in each cycle is—)

A. 500 cal B. 1000 cal
C. 500 kcal D. 10 kcal

০৮. একটি চার্জ q একটি চৌম্বক ক্ষেত্র B এর সাথে সমান্তরালে গতি করছে। (A charge q moving with velocity v along the direction of a magnetic field B . If there is an electric field E in the same place then what will be the effective force on the charge q ?)

A. $q(E + v \times B)$ B. $q(E \cdot v \times B)$
C. qE D. $q(B \cdot v)$

০৯. ব্যতিক্রম করে উল্লেখ না করলে কোনো স্রোতের ক্ষেত্র (Condition for the constructive interference is—)

A. $a \sin \theta = (2n+1) \frac{\lambda}{2}$ B. $a \sin \theta = n\lambda$
C. $a \sin \theta = \frac{\lambda}{2}$ D. $a \sin \theta = (2n+1)\lambda$

১০. একটি বস্তু r এর ব্যাসার্ধে ঘুরছে এবং 4.0 rev/s ঘূর্ণন ঘুরছে। (An object is moving on a circular path of radius r m at a constant speed of 4.0 rev/s. The time required for one revolution is—)

A. $2\pi^2 r$ B. $\pi^2/2r$ C. $\pi/2r$ D. $\pi^2/4r$

রসায়ন (Chemistry) MCQ সেকশন

১. স্ট্রোফ হাইড্রোজেন পরমাণুর মৌলিক অবস্থা $n = 4$, $l = 1$ ফেলের অবস্থানে আছে। (What is the orbital of hydrogen atom at its excited state with quantum number, $n = 4$, $l = 1$?)

A. s orbital B. p orbital
C. d orbital D. $f_{7/2}$ orbital

২. BaMnF_6 এবং Li_2MgF_6 , যথাক্রমে Mn ও Fe এর সর্বোচ্চ অক্সিডেশন সংখ্যা—। (The oxidation numbers of Mn and Fe in BaMnF_6 and Li_2MgF_6 , are—, respectively)

A. +5, +3 B. +5, +2
C. +4, +3 D. +2, +2

৩. $\text{Fe}^{2+}(\text{aq}) + \text{Br}_2(l) + \text{H}^+(\text{aq})$ বিক্রিয়াটির সঠিক অক্সিডেশন-বিজারণ অর্ধ-কোষ বিক্রিয়া—। (Which one is the correct cell reaction of the given electrochemical cell?)

A. $\text{Fe} + \text{Br}_2 \rightarrow \text{Fe}^{2+} + 2\text{Br}^-$
B. $\text{Fe} + 2\text{H}^+ \rightarrow \text{Fe}^{2+} + 2\text{H}_2$
C. $\text{Fe}^{2+} + \text{Br}_2 \rightarrow \text{Fe} + 2\text{H}^+$
D. $\text{Fe} + \text{Br}_2 \rightarrow \text{Fe} + 2\text{H}_2$

৪. নিচের কোন যৌগটি সালফিউরিক অ্যাসিডের সাথে সক্রিয় করে সক্রিয় করে দেয়? (Which one of the following ligands can be used to distinguish between sulphuric acid and nitric acid?)

A. সালফিউরিক অ্যাসিড (Test with universal indicator)
B. সোডিয়াম কার্বোনেট (Addition of sodium carbonate powder)
C. ম্যাগনেসিয়াম-স্ট্রিপ (Addition of magnesium ribbon)
D. বারিয়াম নাইট্রেট (Addition of barium nitrate solution)

৫. প্রোটিনে প্রচুর পরিমাণে প্রচুর অ্যামিনো অ্যাসিডের মধ্যকার বন্ধন—। (The bond present between amino acid units in protein molecule is—)

A. Glycosidic bond B. Peptide bond
C. Hydrogen bond D. Metallic bond

৬. নিচের কোন যৌগটি জ্যামিতিক সমতুল্যতা প্রদর্শন করে? (Which one of the following compounds exhibits geometrical isomerism?)

A. $\text{C}_2\text{H}_5\text{Cl}$ B. $\text{CH}_3\text{CH}=\text{CH}_2$
C. $\text{C}_2\text{H}_5\text{NH}_2$ D. $\text{CH}_3\text{CH}=\text{CHCH}_3$

৭. নিচের কোন যৌগটি সক্রিয় জৈবিক পদার্থ হিসেবে কাজ করে? (Which of the following compound is—)

Figure 5.2.4: previous questions

5.2.5 Admission Calendar

A calendar is essential to the study of chronology, which counts time by regular divisions or periods and uses these to date events. It is also essential for any civilization that needs to measure time for agricultural, business, domestic or other reasons.

Similarly managing timetable is also an important aspect in student life. Calendar is required to maintain this timetable. We have created a calendar here where the admission time and date of all the universities will be updated. So that the students can easily know the exam date and time of any university from one place.



Figure 5.2.5 Admission Calendar

5.2.6 Nearby place

In this section we have added hotels, restaurants around the university. So that students can get an idea about hotels and restaurants in the area. We know that many of those who come out for admission here live far away from the university. As a result, they cannot know everything about the place immediately, so we will list some good hotels and restaurants here so that students can get an idea about the place beforehand.



Figure 5.2.6 Nearby Place

5.2.7 Top University

The best facilities at the university, like an upgraded library, a sports complex, and high-speed internet, enable students to learn more effectively. Students can concentrate well on their academics in this conducive environment.

Second, qualified instructors are essential for a top university's educational program. If the university employs knowledgeable professionals, they help the students achieve their objectives by imparting their knowledge.

In this section we have added information of top universities in Bangladesh. Which is divided into 4 parts.

- Public Universities
- Private Universities
- Medical Universities
- Engineering Universities

5.2.8 Public University

Here you can see we have added information about Bangladeshi top public Universities like BUET, Dhaka University, KUET, CUET, Jahangirnagar University etc.

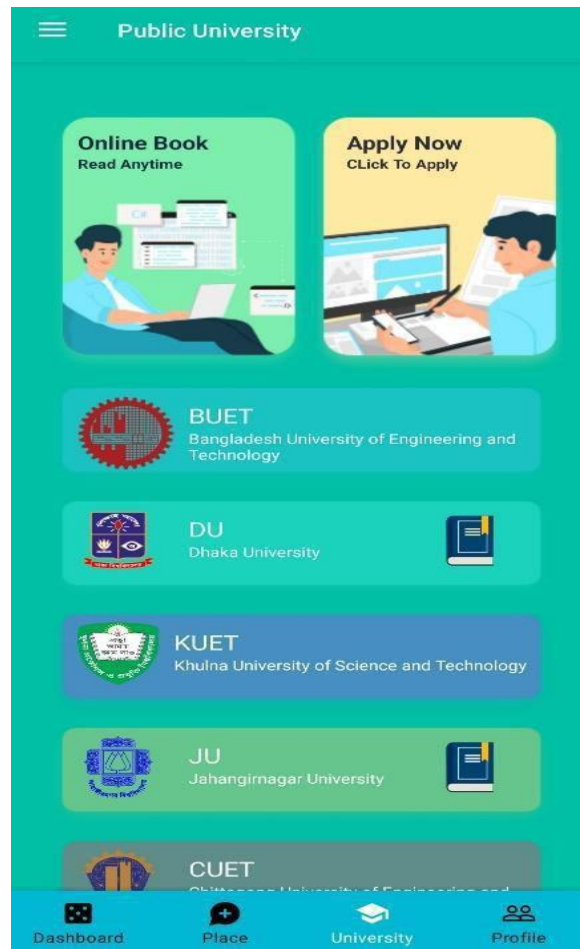


Figure 5.2.8 Public Universities

5.2.9 Private University

Here you can see we have added information about Bangladeshi top privet Universities like DIU, BRAC, North South, AIUB, IUB etc.



Figure 5.2.9 Private Universities

5.2.10 Medical University

Here you can see we have added information about Bangladeshi top Medical Universities like Dhaka Medical College, Salimullah Medical College, Shaheed Suhrawardy Medical College, Mymensingh Medical College etc.



Figure 5.2.10 Medical Universities

5.2.11 Engineering University

Here you can see we have added information about Bangladeshi top Engineering Universities like BUET,SUST,KUET,RUET etc.

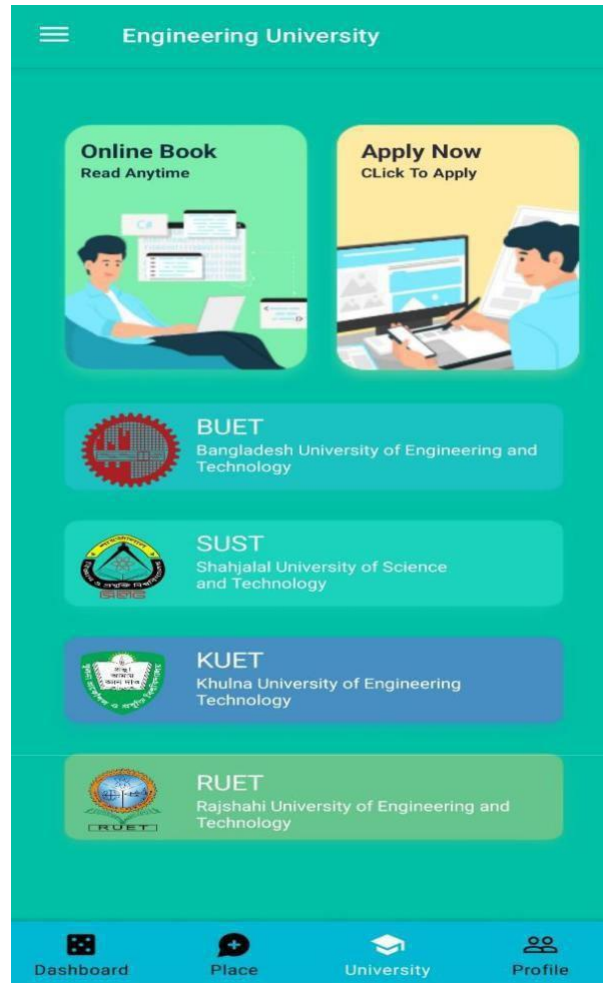


Figure 5.2.11 Engineering Universities

5.2.12 Notice Board

Notice boards serve a purpose of inspiration and motivation. School notice boards allow students to display pictures, poems, stories and quotes that encourage positive attitudes. When students' work is displayed on the notice board, it gives them a sense of appreciation and achievement.

We will add all the important admission related news on this notice board. So that if there is any time change or date change, then this notice board will be notified and any update of our apps will also be notified here.

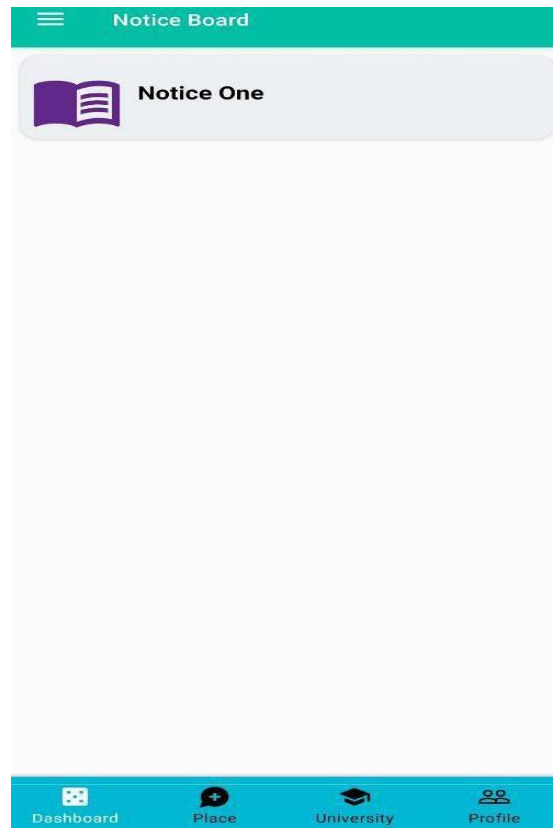


Figure 5.2.12 Notice Board

5.2.13 Students Profile

This section will contain personal information of students. This app will contain the information of the student's login email or phone number and his name, address, college etc. Students can change their name, address and photo from here. And he can change his password if he wants.

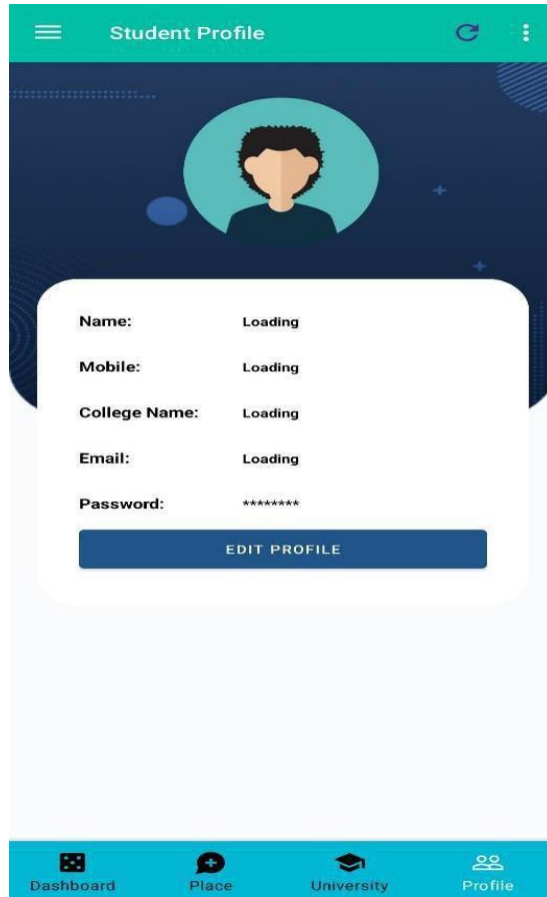


Figure 5.2.13 students Profile

5.2.14 Navigation Bar

A navigation bar (or navigation system) is a section of a graphical user interface intended to aid visitors in accessing information. Navigation bars are implemented in file browsers, web browsers and as a design element of some web sites. In this app we use a navigation bar for graphical user interface intended to aid visitors.

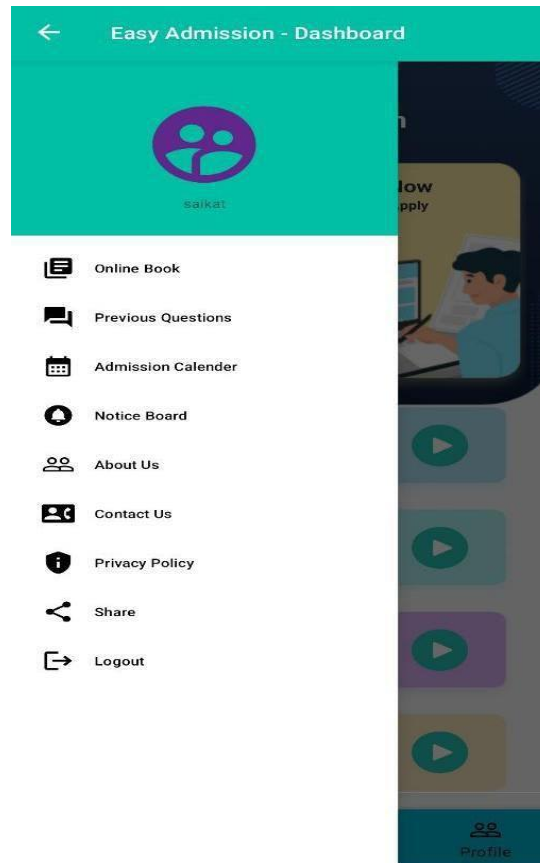


Figure 5.2.14: Navigation Bar

5.3 Testing Implementation

The process of establishing and prioritizing test procedures, producing test data, and, if necessary, setting up test harnesses and creating automated test scripts is known as test implementation. The organization and prioritization of tests as well as the implementation of test designs as test cases, test procedures, and test data occur at this point. Our testing implementation is work properly.

5.4 Test Result and Reports

An examination report is required in order to portray the test results in a formal manner and gives the opportunity to quickly estimate the test outcomes. Test results are documents that are used to compare test results to objectives, define the operational environment, and record information from evaluation studies on an organization's technique. The problem is how to create a set of examples that can be made available to user developers once we have fully established the general architecture for the interaction object and are able to use the results of the final usability test as a benefit. In the actual world, interface interactions are prevalent almost everywhere. Interaction is the key to creating dynamic, user-friendly systems. We work hard to create an interactive system since it's important. In addition, as already said, we offer a few unique functionalities to communicate with our system.

CHAPTER 06

Impact on Society, Environment and Sustainability

6.1 Impact on Society

Easy Admission is an app that helps with admission related preparation and has a significant impact on how information and technology are used to benefit everyone in our society. As the project for our project admission platform, it will be crucial to the societal advancement. Self-sufficient students are extremely important to the education sector of society. Utilizing our application will enable students to expand their knowledge from any location. in order to ensure that implementing this program won't have any negative consequences on society.

6.2 Impact on Environment

Education is essential in every community. It is a procedure used to develop a person's abilities and potential. These abilities include a variety of skills, including mental, emotional, social, and physical abilities. Our project will have a big impact on the social environment. This technology is really easy to use and user-friendly. Our app is simple to use for all students, whether they are in an urban or rural area. It will help students in gaining the abilities and information needed to recognize and manage environmental effects.

6.3 Ethical Aspects

We develop this application in a very ethical way. we didn't copy any of others idea or with any source code. No source code used in our application. We can claim that two major option we keep available in our apps is never used in any other app. So with keep on mind about ethical issues we implement this application.

6.4 Sustainability Plan

Sustainability is the continuation of a project's goals, guiding principles, and efforts to achieve desired outcomes. This suggests that the project's positive effects on its beneficiaries endure after the funding period has expired, rather than just that resources can be found to maintain its operations. The initiative should have provided the beneficiaries, their communities, and the systems that have an impact on them with the required instruments to effectively address the needs for development. To finish the project, we adhere to the system development life cycle processes. in this paragraph. The project's borders are established by us. It was decided on the necessary tools and the time frame for the project's completion.

CHAPTER 07

Conclusion and Future Scope

7.1 Conclusion

By the grace of Almighty Allah, we have successfully completed our App Application project called Easy Admission and documentation. After the long-term of thinking, planning, discussion, implementation we are in the last session and happy of completion. Easy Admission is ready to help the students.

Until now students are not familiar with apps like Easy Admission. They exist in a medium much like a cyber cafe. This is the era of science and technology. If they do not keep the knowledge of using modern technology to solve a huge problem efficiently, then they will not be ready to cope up with the modern world. So, it is important to use such a platform that can reduce their large amount of time from wasting.

7.2 Scope for Future Development

- future we want to collaborate with maximum University for applying throughout easy admission.
- We want to add more feature like live classes by best teacher (subject wise), Quiz option for better preparation and more resource for free.
- And we are ready to give any service for the student by their needed reviews for better preparation.
- Add more useful features.

REFERENCES

- [1] University admission books -All public university and medical admission book list. [<https://bdexamresults.com/university-admission-books/>] 22-1-23---9:34 am.
- [2] Student online admission system [https://www.academia.edu/40450347/student_on_line_admission-system] 10-9-22---10:20 pm.
- [3] Online Admission system for Educational Institutions [<https://www.iitms.co.in/blog/online-admission-system-for-educational-institutions.html>] 12-8-22—11:8am
- [4] Online Admission System (quickschool) [<https://www.quickschools.com/quickschools/features/admissions>] 9-8-22--- 8:10pm
- [5] admissionassistan [<https://www.admissionassistant.com.bd>] 7-8-22--- 5:10pm
- [6] admission war [<https://www.admissionwar.com>] 6-7-22--- 10:10pm
- [7] Top Universities in Bangladesh [<https://www.4icu.org/bd/>]9-6-22--- 8:10pm
- [8] admissions-systems github [<https://github.com/topics/admissions-systems>] 20-6-22--- 12:50am
- [9] All Public University Admission Test and Application Schedule [<https://alormela.org/admission/govt-university-admission/government-university-admission-bangladesh>] 10-5-22--- 1:13am
- [10] Admission Calendar – Undergraduate [https://admissions.au.edu/?page_id=2120]
- [11] google maps [<https://www.google.com/maps/@23.824307,90.5146979,15z>] 9-8-22--- 8:10pm
- [12] Question Bank All University [https://admissiontechbd.com/Question_Bank/Admission_Question]
- [12] Nextjs, available at <<<https://nextjs.org>>>, last access on 23-03-2021 at 1.30am
- [13] Tailwindcss, available at <<<https://tailwindcss.com>>>, last access on 18-03-2021 at 7.00am
- [14] GitHub, available at <<<https://github.com/touhidulshawan>>>, last access on 03-03-2021 at 12.20am
- [15] Undraw, available at <<<https://undraw.co/>>>, last access on 12-03-2021 at 8.00pm

APPENDICES

Appendices: Project Reflection

Since begin the trip a year ago, we have gained a great deal of participation with our lives. When we set out on our adventure, we were unfamiliar with numerous Java, XML, and database concepts. We have built a strong foundation of knowledge about these libraries and frameworks by creating this Easy Admission platform.

Knowing the correct procedures for creating an application was difficult for us. But we still had some optimism. After that, we carefully considered the requirements and created a plan, which increased our confidence in our ability to create the application. We encountered a number of problems as we developed the project's work with the database.

After a year of hard work, we have finally finished developing our application. We have a ton of ideas for further online programs.

We have a ton of suggestions for other online applications. We first learned about the web application when we were investigating competing programs to determine where they fell short. We now have the conviction that anything is achievable if we put in the necessary effort. We owe a debt of gratitude to The Almighty ALLAH and to our devout Mem Lamia Rukhsara for their support and wise leadership along the way.

EASY ADMISSION APP – AN EASY WAY TO PREPARE FOR ADMISSION

ORIGINALITY REPORT

27%
SIMILARITY INDEX

25%
INTERNET SOURCES

0%
PUBLICATIONS

14%
STUDENT PAPERS

PRIMARY SOURCES

1	dspace.daffodilvarsity.edu.bd:8080 Internet Source	16%
2	Submitted to Daffodil International University Student Paper	4%
3	en.wikipedia.org Internet Source	1%
4	Submitted to Midlands State University Student Paper	1%
5	Submitted to Birkenhead Sixth Form College, Merseyside Student Paper	1%
6	Submitted to Asia Pacific International College Student Paper	1%
7	www.upwork.com Internet Source	1%
8	www.coursehero.com Internet Source	1%
	www.britannica.com	
9	Internet Source	1%
10	Submitted to University of Melbourne Student Paper	<1%
11	Submitted to Muscat College Student Paper	<1%
12	Submitted to University of Maryland, University College Student Paper	<1%
13	www.irjmets.com Internet Source	<1%
14	Submitted to CSU, Fullerton Student Paper	<1%
15	Submitted to Manteca Unified School District	<1%