

**“ANIMATION SHORT FILM: THE PERFECT PAIR”
PRE-PRODUCTION**

BY

Shaikh Siam

ID: 193-40-646

This Report Presented in Partial Fulfillment of the Requirements for the Degree of
Bachelor of Science in Multimedia and Creative Technology

Supervised By

Dr. Sheikh Muhammad Allayear

Professor

Department of Multimedia & Creative Technology
Daffodil International University



**DAFFODIL INTERNATIONAL UNIVERSITY
DHAKA, BANGLADESH**

19th August 2023

APPROVAL

This Project titled “**ANIMATION SHORT FILM: THE PERFECT PAIR**” **PRE-PRODUCTION**, submitted by **Shaikh Siam** (ID: 193-40-646) to the Department of Multimedia and Creative Technology, Daffodil International University, has been accepted as satisfactory for the partial fulfillment of the requirements for the degree of B.Sc. in Multimedia and Creative Technology and approved as to its style and contents. The presentation was held on 19-08-2023.

BOARD OF EXAMINERS



Md. Salah Uddin

Assistant Professor & Head (In-Charge)

Department of Multimedia and Creative Technology

Faculty of Science & Information Technology

Daffodil International University

Chairman



Mizanur Rahman

Assistant Professor

Department of Multimedia and Creative Technology

Faculty of Science & Information Technology

Daffodil International University

Internal Examiner



Dr. Md. Samaun Hasan

Assistant Professor

Department of Multimedia and Creative Technology

Faculty of Science & Information Technology

Daffodil International University

Internal Examiner



Dr. Mohammad Zahidur Rahman

Professor

Department of Computer Science and Engineering

Jahangirnagar University

External Examiner

DECLARATION

I hereby declare that this project has been done by me under the supervision of **Dr. Sheikh Muhammad Allayear, Professor & proctor, Department of Multimedia and Creative Technology**, Daffodil International University. I also declare that neither this project nor any part of this project has been submitted elsewhere for award of any degree or diploma.

Supervised by:



Dr. Sheikh Muhammad Allayear
Professor
Department of MCT
Daffodil International University

Submitted by:



Shaikh Siam
ID: 193-40-646
Department of MCT
Daffodil International University

ACKNOWLEDGEMENT

Firstly, I thank and express my sincere gratitude to Almighty Allah. Thanks to his infinite grace it made possible the successful completion of the final year project.

I am grateful and we are deeply indebted to **Dr. Shaikh Muhammad Allayear, Professor** of Department of Multimedia and Creative Technology, Daffodil International University, Dhaka. The deep knowledge and keen interest of our supervisor in the field of "3D Modeling and Pre-Production of Animation" resplendently helped us to complete this project. His infinite patience, scholarly guidance, constant inspiration, energetic supervision, constructive criticism, valuable suggestions, reading many poor-quality drafts, and correcting them at all stages made this project possible.

I would like to express my sincere gratitude to Mr. Md. Salah Uddin, Assistant Professor & Head (In-Charge) of Department, and Mr. Kazi Jahid Hasan, Lecturer, Multimedia and Creative Technology, for their kind help in completing our project and to other faculty members and staff of the MCT Department of Daffodil International University.

I would like to thank my entire friends at Daffodil International University, who participated in this discussion while completing the coursework.

Finally, my parents' continuous support and patience must be acknowledged with due respect.

ABSTRACT

“The Perfect Pair” is a 3D animated short film that tells a story. The Perfect Pair" is a captivating 3D animated film that invites audiences of all ages on a magical journey filled with friendship, self-discovery, and the boundless power of collaboration. Set in a richly imaginative world where creativity knows no bounds, this animated masterpiece explores the profound connection between two distinct characters and the remarkable impact of their unique abilities.

In a realm where sketchbooks and paper come to life, our protagonists, Pete and Penelope, embody the essence of artistic expression. Pete, a gentle and thoughtful pencil, possesses the ability to craft intricate and emotive lines, while Penelope, a vibrant and confident pen, wields the skill to create bold and daring strokes. As they chance upon each other's talents, an extraordinary partnership emerges, showcasing their potential to create something far greater together than apart.

The story takes flight as Pete and Penelope embark on exhilarating adventures, breathing life into their sketches through their collaborative efforts. However, beneath the surface of their perfect union, a tale of introspection unfolds as Pete grapples with feelings of inadequacy in the face of Penelope's dynamic creativity. His emotional turmoil drives him to distance himself, leading to a rift that challenges the very foundation of their friendship.

The turning point arrives when Penelope, fueled by her unwavering devotion, seeks out Pete to mend the bonds that have been frayed. Through a heartfelt dialogue, she imparts the profound wisdom that their abilities are not just complementary, but interdependent. Penelope helps Pete recognize that his delicate lines infuse their creations with depth and emotion, and his uniqueness is an integral part of their creative symphony. Inspired by Penelope's insights, Pete rekindles his self-assurance and embraces his vital role in their partnership.

Their collaboration becomes a mesmerizing dance of intricate lines and bold strokes, yielding sketches that mesmerize not only visually but emotionally as well. As their creative prowess

blossoms, they become a source of inspiration, encouraging others to embrace their individual talents and embrace the strength of unity.

"Harmony Unleashed: The Perfect Pair" is a triumph of 3D animation, weaving together cutting-edge technology with an enchanting narrative to deliver an unforgettable cinematic experience. Beyond the visually stunning landscapes and captivating characters, the film delves into universal themes of self-discovery, friendship, and the power of acceptance.

The animation's meticulous attention to detail and expertly choreographed scenes promise to captivate audiences of all ages, while the story's poignant messages will resonate long after the final frame.

This 3D animated film is poised to become a timeless classic, inviting viewers to explore the transformative potential of collaboration and the beauty of embracing individuality. With its dazzling visuals, heartfelt narrative, and powerful themes, "Harmony Unleashed: The Perfect Pair" stands as a testament to the magic that can unfold when we celebrate our differences and work together in perfect harmony.

TABLE OF CONTENT

CONTENT	PAGE
Approval	ii
Declaration	iii
Acknowledgement	iv
Abstract	v
CHAPTER 1: CASE STUDY	1-9
1.1 Case Study Overview	1
1.2 Problem Identification	2-3
1.3 Objectives	3-4
1.4 Related Work and Research	5-6
1.5 Idea or Concept Generation	7-9
CHAPTER 2: USER RESEARCH (DISCOVER & DEFINE)	10-24
2.1 Target Audience	10-13
2.2 Target Audience Analysis	13-16
2.2.1 Psychology	16-18
2.2.2 Geographical Psychology	18-20
2.2.3 Education/ Culture	20-22
2.3 Contents Medium	22-24

CHAPTER 3: IDEA RESHAPING	24-34
3.1 Idea to update [Plot Creation]	24-26
3.2 Character update. [Deep Analysis]	26-28
3.3 Dramatically Theme Analysis	29-30
3.3.1 Environment Creation	31-34
CHAPTER 4: STORY WRITING	35-36
CHAPTER 5: VISUALIZATION ANALYSIS	37-44
5.1 Script Writing	37-39
5.2 Screen Play	40
5.3 Storyboarding	41-44
CHAPTER 6: Evulation	45-48
6.1 Analysis	45
6.2 Cultural Impact Analysis	46
6.3 Is it understandable?	47
6.4 Your overall Criticism	48
CHAPTER 7: DISCUSSION	49
CHAPTER 8: CONCLUSION	50
REFERENCES	51-52

LIST OF FIGURES	PAGE
Figure 1.1 Concept Generation 1	7
Figure 1.2 Concept Generation 2	7
Figure 1.3 Concept Generation 3	8
Figure 1.4 Mind Mapping	8
Figure 1.5 Penelope	9
Figure 1.6 Pete	9
Figure 5.1 Script writing 1	34
Figure 5.2 Script writing 2	35
Figure 5.3 Script writing 3	36
Figure 5.4 Script writing 4	37
Figure 5.5 Script writing 5	37
Figure 5.6 Script writing 6	38
Figure 5.7 Script writing 7	38
Figure 5.8 Script writing 8	39
Figure 5.9 Script writing 9	39
Figure 5.10 Script writing 10	40

CHAPTER 1

CASE STUDY

1.1 Case Study Overview

The case study of "The Perfect Pair" encapsulates a captivating narrative that embodies friendship, collaboration, and self-discovery, all within the enchanting backdrop of a world fueled by creativity. The story unfolds within the realm of sketchbooks, where Pete, a gentle pencil, and Penelope, a bold pen, embark on a journey of artistic exploration and personal growth.

At its core, the case study explores the evolution of a narrative that centers around two characters with distinct abilities and personalities. It traces the development of the concept from its inception to the emergence of its central theme—friendship and collaboration—as the driving force behind Pete and Penelope's intertwined journey.

1.2 Problem Identification

The context of "The Perfect Pair" identifies several key challenges and dilemmas that move the narrative forward and provide opportunities for character development and growth.

Pete's sense of inadequacy:

A significant problem arises when Pete, the soft pencil, begins to feel inferior to Penelope because of his perception that her soft lines are less significant than her bold strokes. This internal struggle leads to self-doubt and emotional withdrawal from their collaborative creative sessions.

Impact on Creative Partnerships:

Pete's withdrawal from their creative partnership caused a rift between him and Penelope. Their once-flourishing collaboration falters, and the absence of Pete's fine lines begins to affect the overall quality and emotional depth of their joint creations.

Loss of mental balance:

Pete's absence of soft lines has a real impact on the emotional resonance of their sketches. Penelope's bold lines alone could not capture the tenderness and depth that Pitt's contributions brought to their work, leading to an imbalance in the emotional aspects of their sketches.

Impact on personal well-being:

Pete's emotional struggles have consequences beyond their collaborative work. His feelings of inadequacy and withdrawal from creative endeavors began to affect his overall well-being, affecting his self-esteem and sense of purpose.

Threats to their unique partnership:

The problem of Pete's feelings of inadequacy threatens to disrupt the unique partnership between the two characters. Their ability to combine opposing forces and create something harmonious is compromised, potentially leading to long-term consequences.

Resolution through communication and acceptance:

The narrative navigates these challenges by highlighting the importance of communication, empathy, and acceptance. Through Penelope's understanding of Pete's pain and her reassurance, Pete's problem of feelings of inadequacy begins to find a solution. The story underscores the importance of recognizing and appreciating each other's strengths, thereby restoring their creative partnership and emotional balance.

In short, the identification of the problem in "The Perfect Pair" centers on Pete's inner struggle with feelings of inadequacy, its effect on their collaborative partnership, the emotional imbalance in their sketch, and the potential threat to their unique creative bond. The resolution of the narrative is driven by themes of communication, understanding, and recognition of the value of individual strength

1.3 Objectives

The objectives of "The Perfect Pair" are multifaceted, encompassing both narrative and thematic aspects. These objectives drive the characters' journeys and contribute to the overall impact of the story.

Narrative Objectives:

Resolve Pete's Internal Conflict: The primary narrative objective is to guide Pete through his journey of overcoming feelings of inadequacy and self-doubt. The story aims to showcase his growth from emotional withdrawal to self-acceptance and renewed creative engagement.

Restore the Creative Partnership: An essential objective is to restore the once-flourishing creative partnership between Pete and Penelope. Through open communication and empathy, the story seeks to mend the emotional rift and rekindle their collaborative spirit.

Thematic Objectives:

Celebration of Friendship: A core thematic objective is to celebrate the strength and beauty of friendship. The narrative emphasizes the profound impact that true friendship can have on personal growth, emotional well-being, and creative endeavors.

Recognition of Individual Strengths: The story aims to convey the message that every individual possesses unique strengths and talents that contribute to collaborative efforts. The recognition and appreciation of these differences are vital for achieving harmonious outcomes.

Empowerment through Collaboration: The narrative seeks to empower audiences by demonstrating that collaboration harnesses the power of diverse abilities. By showcasing how Pete's soft lines and Penelope's bold strokes combine to create something greater, the story inspires others to embrace collaboration in their pursuits.

Emotional Depth in Art: An objective is to underline the importance of emotional depth in artistic expression. By contrasting Pete's delicate lines with Penelope's bold strokes, the story exemplifies how combining different artistic qualities can evoke nuanced emotions in creative works.

Artistic Objectives:

Visual Contrast and Synergy: A visual objective is to visually contrast Pete and Penelope's abilities while highlighting the visual synergy that emerges when their contrasting lines merge in their collaborative creations.

World Building: An artistic objective is to create a visually captivating world that mirrors the characters' abilities. This world-building process aims to enrich the narrative by providing an immersive backdrop that resonates with the story's themes.

Audience Engagement:

Emotional Connection: An audience engagement objective is to evoke emotional resonance with the characters' struggles, growth, and achievements. By portraying relatable emotions, the story aims to foster a deep emotional connection with viewers.

Inspiration and Reflection: The narrative intends to inspire audiences to reflect on their own strengths, insecurities, and collaborative potential. The uplifting message of the story encourages viewers to consider the significance of their contributions and relationships.

1.4 Related Work and Research

In the context of "The Perfect Pair," a review of related work and research serves to contextualize the narrative, themes, and artistic choices within a broader creative landscape.

Literary and Film Inspirations:

Numerous literary and film works have explored themes of friendship, collaboration, and self-discovery. Stories like "Toy Story" and "Inside Out" delve into the emotional worlds of characters, while "The Lion King" highlights the power of diverse strengths in a group dynamic. These works provide insights into character development, narrative arcs, and the emotional resonance of storytelling.

Psychology of Self-Esteem:

Research on self-esteem and self-perception is relevant to the narrative's exploration of Pete's feelings of inadequacy. Psychological studies, such as those by Carl Rogers and Abraham Maslow, contribute to understanding the internal struggles that individuals experience and the potential for growth through self-acceptance.

Art and Emotion:

Scholarly work in art psychology and aesthetics sheds light on the emotional impact of artistic expression. Researchers like Paul Ekman and Robert Plutchik have explored the connection between visual stimuli and emotional responses. This research informs the narrative's focus on Pete and Penelope's contrasting artistic abilities and their ability to evoke emotions in their sketches.

Collaborative Creativity:

Studies on collaborative creativity in the fields of art and literature offer insights into the dynamic of partnerships like that of Pete and Penelope. Research by Keith Sawyer and Teresa Amabile examines how collaboration enhances creative processes, highlighting the synergy of different talents working towards a common goal.

Visual Contrast and Symbolism:

Artistic techniques related to visual contrast and symbolism play a role in the narrative's characterization and world-building. Research into color theory, visual motifs, and contrasts in visual storytelling, as discussed by Josef Albers and Rudolf Arnheim, provide a foundation for the visual design choices in the story.

Sound and Emotional Resonance:

Exploration of sound's impact on emotional resonance aligns with the narrative's focus on music and sound design. Research on the psychology of music by Daniel Levitin and film sound design principles by Walter Murch inform the narrative's intent to use auditory elements to enhance emotional depth.

1.5 Idea or Concept Generation

The creation of "The Perfect Pair" was fueled by a tapestry of inspirations, weaving together personal experiences, artistic endeavors, and a shared desire to convey a powerful message. This section delves into the sources of inspiration that gave life to our animated short film. I mainly trace this story from my four years of university life because from the very beginning of our university life we have to work in groups, although it is easy for a student to work in groups but sometimes it can turn out to be bad rather than good. While working in groups, I realized that we cannot all work in the same way, my friends can work much better than me. And I can do a better job than some. In fact, those of us who can work less or have less skills, are shy to come in front of everyone and hide our talents. When I see my friends doing well but I can't, At that time I liked to keep myself away from everyone. This story is taken from there, because Life is more beautiful than stories

I started writing the story. I was looking for something that would bring out the best in my story. After much thought, I chose the pair of pencil and pen in this story. Basically we all underestimate our talents. We cannot understand that this fear of not being able to do something new is opening up new possibilities for us. You have to become confident in your own place.



Figure- 1.1_ "Concept Generation"

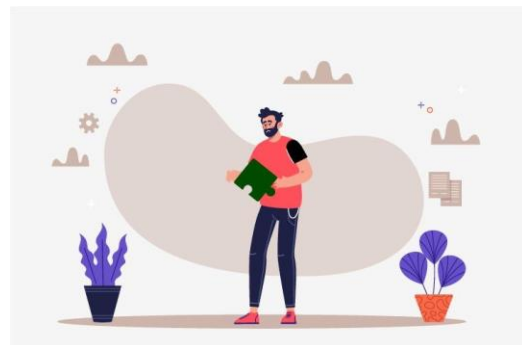


Figure1.2_ "Concept Generation"

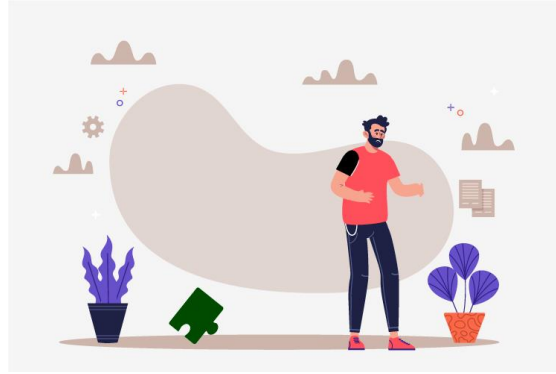


Figure- 1.3_”Concept Generation”

1.5.1 Mind Mapping

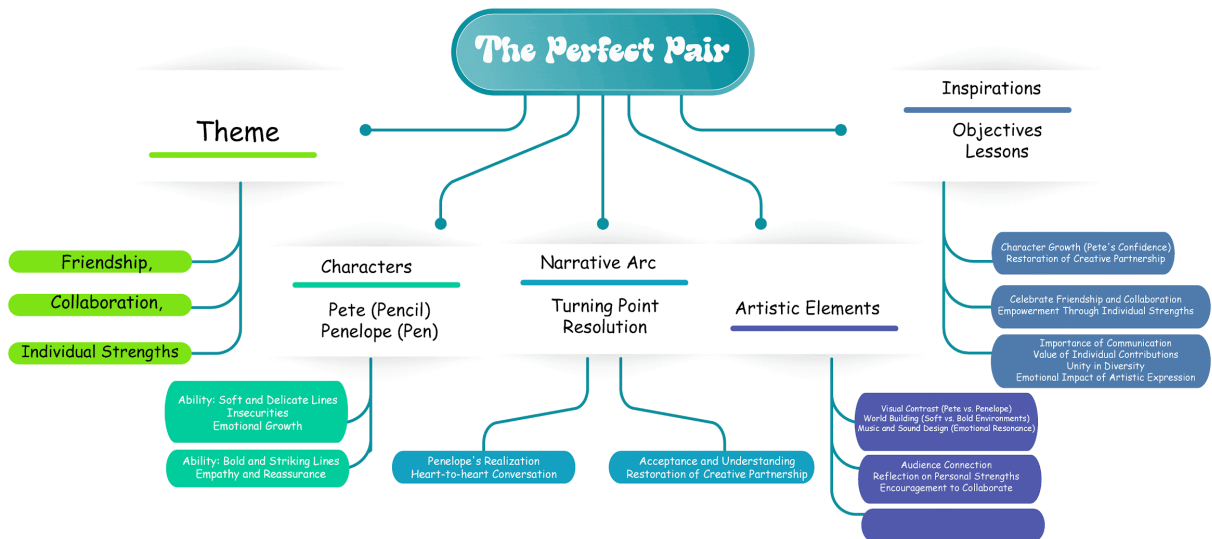


Figure- 1.4_”Mind Mapping”

1.5.2 Character sketching

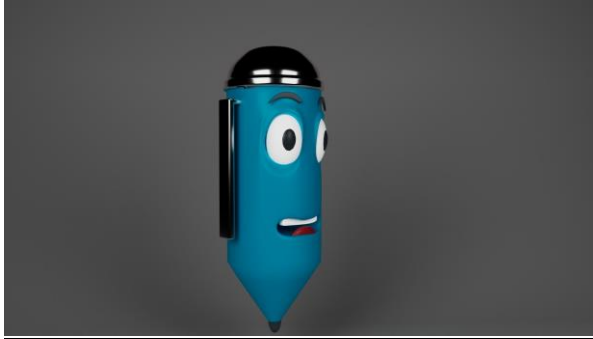


Figure- 1.5_”Penelope”

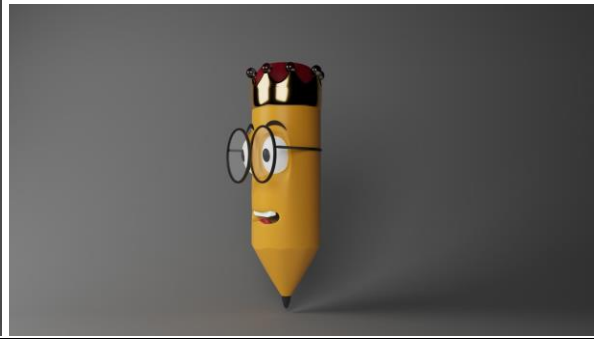


Figure1.6_”Pete”

CHAPTER 2

USER RESEARCH (DISCOVER & DEFINE)

2.1 Target Audience

Identifying the target audience for "The Perfect Pair" is crucial in tailoring the narrative, themes, and artistic elements to resonate effectively. The following outlines the primary and secondary target audience for the animated short film:

Primary Target Audience:

1. **Children (Ages 6-12):** The primary audience includes children who are drawn to imaginative and visually captivating stories. The relatable characters of Pete and Penelope, along with the vibrant world of sketchbooks, will engage their sense of wonder and creativity.

Secondary Target Audience:

1. **Parents and Caregivers:** As gatekeepers, parents and caregivers are an important secondary audience. They seek content that not only entertains their children but also imparts positive values. The themes of friendship, collaboration, and embracing individual strengths will resonate with them as they encourage these qualities in their children.
2. **Educators and Schools:** The narrative's themes align with educational objectives related to teamwork, self-esteem, and artistic expression. Educators can use "The Perfect Pair" to spark discussions about emotions, collaboration, and the power of creative partnerships.

3. **Art Enthusiasts and Creators:** Individuals who appreciate art and creative expression, regardless of age, will find resonance in the story's exploration of artistic abilities, visual contrast, and emotional depth. The narrative could serve as a source of inspiration for their own creative endeavors.
4. **Animation Enthusiasts:** People who enjoy animation as an art form and storytelling medium will appreciate the technical craftsmanship, visual design, and sound elements showcased in the film.

How the Story Appeals to the Target Audience:

1. **Visual Appeal:** The colorful and imaginative world of sketchbooks is designed to captivate the primary audience's visual senses, fostering a sense of wonder and creativity.
2. **Relatable Characters:** The characters' emotions and struggles resonate with both children and adults, creating an emotional connection that draws the audience into their journey.
3. **Positive Values:** The themes of friendship, collaboration, and embracing one's unique strengths align with values that parents, educators, and caregivers seek to instill in children.
4. **Entertainment and Learning:** The narrative balances entertainment with learning, making it suitable for both leisure viewing and educational discussions.
5. **Artistic Elements:** Animation enthusiasts, art aficionados, and creators will appreciate the attention to detail in character design, visual contrast, and the emotional impact of music and sound design.

The target audience for "The Perfect Pair" includes children aged 6-12 as the primary audience, and secondary audiences such as parents, educators, art enthusiasts, and animation aficionados. By tailoring the narrative and elements to resonate with these groups, the film aims to create a meaningful and engaging viewing experience for a diverse range of individuals.

2.2 Target Audience Analysis

Conducting a thorough analysis of the target audience for "The Perfect Pair" provides insights into their characteristics, preferences, and motivations. This understanding informs the creative decisions made in crafting the narrative, themes, and artistic elements of the animated short film.

Primary Target Audience: Children (Ages 6-12)

Characteristics:

- Curious and imaginative
- Open to new experiences
- Limited attention spans
- Respond well to visual stimuli

Preferences:

- Vibrant and visually engaging content
- Relatable characters and emotions
- Stories with clear morals and positive messages

Motivations:

- Entertainment and enjoyment
- Learning through engaging narratives
- Emotional connection with characters

Secondary Target Audience: Parents and Caregivers

Characteristics:

- Seek age-appropriate and educational content
- Interested in positive values and lessons
- Influence children's media choices

Preferences:

- Stories that teach valuable life lessons
- Content that encourages positive behavior and values

Motivations:

- Ensuring content aligns with family values
- Shared viewing experiences with children

Educators and Schools

Characteristics:

- Focus on educational and character development
- Seek content that enhances learning

Preferences:

- Stories that align with curricular themes
- Opportunities for class discussions and activities

Motivations:

- Enhancing teaching through engaging narratives
- Content that reinforces classroom values

Characteristics:

- Appreciation for artistic expression
- Seek inspiration from different forms of art

Preferences:

- Visually captivating and artistically meaningful content
- Exploration of creative processes and collaboration

Motivations:

- Drawing inspiration from storytelling and visual design
- Exploring the emotional impact of artistic expression

Animation Enthusiasts

Characteristics:

- Interest in animation techniques and craftsmanship
- Appreciation for storytelling through animation

Preferences:

- High-quality animation and technical execution
- Stories that showcase the potential of animation as a medium

Motivations:

- Analyzing animation techniques and storytelling choices
- Exploring the intersection of art and narrative in animation

Utilizing the Audience Analysis:

Understanding the characteristics, preferences, and motivations of the target audience informs critical decisions in shaping "The Perfect Pair." From character development to thematic exploration and visual design, the analysis ensures that the narrative resonates deeply with each segment of the audience. The storytelling approach, themes, and artistic choices are tailored to create an emotional connection and engage the target audience on multiple levels, ensuring a meaningful and impactful viewing experience.

2.2.1 Psychology

Understanding the psychological aspects of the target audience is essential for creating a narrative that resonates with their emotions, cognitive development, and preferences. In the case of "The Perfect Pair," the psychological considerations for the primary target audience (children aged 6-12) play a significant role in shaping the storytelling approach.

Cognitive Development:

- Children in this age range are in the concrete operational stage of cognitive development. They can grasp complex concepts and understand cause-and-effect relationships.
- The story's conflict, resolution, and character growth should align with their cognitive abilities to foster comprehension and engagement.

Emotional Resonance:

- Children are capable of empathizing with characters and experiencing a range of emotions.
- The emotional journey of Pete and Penelope should be relatable and allow children to connect with their struggles, triumphs, and personal growth.

Moral Development:

- Children begin to develop a sense of morality and ethics during this period.
- The story's positive themes of friendship, collaboration, and embracing one's strengths align with children's emerging understanding of moral values.

Attention Span and Engagement:

- Children in this age range have varying attention spans, which influence the pacing and structure of the narrative.
- Visual engagement, dynamic storytelling, and relatable characters are key to maintaining their interest throughout the film.

Imagination and Fantasy:

- Children have vibrant imaginations and are drawn to fantastical elements.
- The world of sketchbooks and limitless creativity in the story's setting resonates with children's imaginative tendencies.

Educational Engagement:

- Stories that weave educational elements seamlessly into the narrative can enhance learning.
- The story's themes of collaboration and emotional depth can be explored in educational contexts, making it appealing to educators and parents.

Empowerment through Identification:

- Children often seek characters they can identify with and aspire to be like.
- Pete and Penelope's journey from insecurity to self-acceptance can empower children by showing that challenges can be overcome.

Creating Emotional Connections:

- The use of relatable emotions and situations enables children to form emotional connections with characters.
- Pete and Penelope's emotional journey should resonate with children's experiences, fostering empathy and engagement.

By delving into the psychology of the primary target audience, "The Perfect Pair" can tailor its narrative, character development, and themes to create a powerful emotional impact on children aged 6-12. Through relatable characters, engaging storytelling, and positive themes, the film can foster both entertainment and personal growth in its young viewers.

2.2.2 Geographical Psychology

Analyzing geographical and cultural factors within the target audience's context can provide insights into how "The Perfect Pair" can resonate with different regions and communities. While the primary audience is children aged 6-12, geographical psychology considerations allow for adaptations that cater to diverse cultural backgrounds and local preferences.

Cultural Context:

- Different cultures have unique values, beliefs, and storytelling traditions that can influence how the narrative is received.
- The themes of friendship, collaboration, and self-discovery are often universal, but nuances may vary across cultures.

Visual Aesthetics:

- Visual preferences can differ based on cultural aesthetics and art traditions.
- Adapting the visual design to incorporate elements that resonate with specific cultural sensibilities can enhance engagement.

Educational Relevance:

- Cultural educational systems and values may impact the relevance of the story's themes to different regions.
- Customizing educational engagement by aligning with local curricular values can make the narrative more relatable.

Character Diversity:

- Representing diverse characters can ensure inclusivity and resonance with a global audience.
- Adapting character designs to reflect a range of ethnicities and backgrounds contributes to cultural sensitivity.

Language and Localization:

- Translating the story into different languages while preserving its emotional depth is crucial for global reach.
- Consideration of language nuances and idiomatic expressions ensures that the narrative resonates authentically.

Regional Symbolism:

- Incorporating regional symbols, folklore, or cultural references can enhance the story's authenticity.
- Connecting with local cultural elements fosters a sense of familiarity and relatability.

Cultural Impact of Themes:

- While the themes of friendship and collaboration are universal, cultural perceptions of individual strengths and relationships can differ.
- Adapting how these themes are approached can make them culturally relevant without compromising the narrative's core message.

Distribution Channels:

- Understanding regional preferences for media consumption platforms and formats is essential.
- Tailoring distribution strategies to align with local viewing habits maximizes accessibility.

By considering geographical psychology, "The Perfect Pair" can ensure its universal themes resonate authentically with diverse audiences. Cultural adaptations, visual aesthetics, and regional nuances can be integrated to create a narrative that not only entertains but also reflects and respects the values and sensibilities of different communities.

2.2.3 Education/ Culture

Taking into account the educational and cultural aspects within the target audience's context enriches the storytelling of "The Perfect Pair" and enhances its impact on education and cultural values. By aligning with educational curricula and respecting cultural sensitivities, the narrative becomes a meaningful tool for both learning and cultural appreciation.

Education Alignment:

Collaborating with educators to ensure that the story's themes align with educational goals and values. Integrating concepts like collaboration, emotional intelligence, and artistic expression can contribute to holistic learning experiences.

Life Lessons:

Embedding life lessons that align with educational objectives, such as problem-solving and self-esteem, resonates with educators, parents, and children. The narrative can serve as a springboard for discussions and activities that reinforce these lessons.

Global and Local Context:

Adapting the narrative to reflect global and local issues fosters a sense of relevance and cultural sensitivity. Addressing universal challenges while acknowledging local nuances ensures relatability across diverse cultural contexts.

Cultural Representation:

Including characters from various cultural backgrounds promotes inclusivity and appreciation of diversity. Sensitively portraying cultural elements contributes to cross-cultural understanding and respect.

Language Learning:

Creating localized versions of the film with accurate translations can aid language learning and promote multilingualism. Subtitles or dubbed versions can provide language exposure in an engaging manner.

Interactive Learning Resources:

Developing educational resources like discussion guides, art activities, and collaborative projects enhances the film's educational impact. Offering tools for educators and parents to extend learning beyond the film experience.

Traditional Art and Craft:

Incorporating traditional art and craft techniques within the narrative celebrates cultural heritage. Story elements that involve local artistic practices can foster an appreciation for cultural traditions.

Cultural Sensitivity:

Respecting cultural norms and sensitivities is paramount to avoid misrepresentation or offense. Collaborating with cultural experts can ensure authenticity in cultural portrayals.

Positive Role Models:

Introducing characters who exhibit positive qualities aligned with cultural values can inspire and reinforce ethical behavior. Role models that resonate with cultural expectations can leave a lasting impact.

By weaving educational and cultural considerations into the narrative fabric, "The Perfect Pair" can transcend entertainment and become a vehicle for meaningful learning experiences and cultural appreciation. The film's themes, characters, and messages can resonate deeply with educators, learners, and diverse cultural communities, fostering understanding and growth on multiple levels.

2.3 Contents Medium

Determining the appropriate content medium for engaging the target audience of "The Perfect Pair" involves selecting platforms and formats that effectively convey the film's themes, characters, and messages. Considering the preferences and habits of the primary and secondary audiences ensures maximum impact and reach.

Primary Audience: Children (Ages 6-12)

1. Animated Short Film:

- The primary medium for engaging children is the animated short film itself.
- Make the film available on popular streaming platforms for children's content.
- Ensure the film's accessibility through age-appropriate platforms and parental controls.

2. Interactive Website or App:

- Create an interactive website or app that extends the film's world.
- Include engaging activities, games, and quizzes related to the film's themes.
- Encourage children to explore creativity and collaborate through interactive tools.

3. Educational Partnerships:

- Collaborate with educational institutions to incorporate the film into classroom discussions.
- Develop educational resources for teachers, such as lesson plans and activity guides.

4. Social Media Campaigns:

- Use social media platforms to share behind-the-scenes content, character profiles, and art tutorials.
- Encourage user-generated content, such as fan art and creative collaborations.

Secondary Audience: Parents, Educators, Art Enthusiasts

1. Educational Webinars or Workshops:

- Host webinars or workshops for parents and educators discussing the film's themes and educational value.
- Provide insights into using the film as a tool for teaching valuable life lessons.

2. Artistic Workshops:

- Organize art workshops or masterclasses led by professionals in the animation and art industry.
- Showcase the creative process behind the film's visual design and animation.

3. Educational Blogs or Articles:

- Publish articles or blog posts exploring the educational and psychological aspects of the film.
- Discuss the benefits of using entertainment media for learning and character development.

4. Film Festivals and Events:

- Submit the film to relevant film festivals and events focused on animation and education.
- Use these platforms to engage with a wider audience interested in creative storytelling.

5. Collaborative Projects:

- Initiate collaborative projects where art enthusiasts and creators can contribute their interpretations of the film's themes.
- Showcase the diversity of creative responses through exhibitions or online galleries.

6. Email Newsletters:

- Send regular newsletters to keep the audience updated on the film's impact, screenings, and educational resources.
- Include exclusive content and insights for subscribers.

CHAPTER 3

IDEA RESHAPING

By utilizing these diverse content mediums, "The Perfect Pair" can reach and engage its target audience on multiple fronts. Each medium caters to specific preferences and needs, allowing the film to extend its impact beyond entertainment and connect with audiences on educational, artistic, and collaborative levels.

3.1 Idea to update [Plot Creation]

Main Characters:

Pete: A gentle and introspective pencil with the ability to create soft and intricate lines.

Penelope: An adventurous pen, bold and expressive, able to create striking and vivid strokes.

Plot:

In the imaginative world of sketchbooks, Pete and Penelope exist as the embodiment of artistic potential. Together, they create magic on the pages, each bringing their unique abilities to the canvas. Pete's delicate lines form the foundation, while Penelope's bold strokes add life and depth.

Act 1: Establishing the Duo

Pete and Penelope meet within a sketchbook, their talents immediately complementing each other. They embark on creative journeys, sketching landscapes, characters, and dreams. Their partnership blossoms as they learn to harmonize their skills.

Act 2: The Struggle of Comparison

As time goes on, Pete begins to doubt his significance. Seeing Penelope's bold strokes, he feels that his gentle lines are inadequate. This self-doubt leads to his withdrawal from their creative sessions. Penelope notices the change and confronts Pete, worried about their fractured bond.

Act 3: Journey of Self-Discovery

To reignite their friendship, Penelope embarks on a journey through various artistic landscapes within the sketchbook. Along the way, she encounters personified elements of art – a wise color palette, a quirky paintbrush, and a contemplative eraser. Through these interactions, Penelope discovers that every stroke, whether bold or delicate, contributes to the beauty of art.

Act 4: Reconciliation and Collaboration

Penelope's journey brings her back to Pete, armed with newfound wisdom. She helps Pete understand that his soft lines carry a unique emotional depth that complements her bold strokes perfectly. Their friendship deepens as they realize the magic lies in their collaboration, not comparison.

Act 5: Unveiling the Masterpiece

Reinvigorated, Pete and Penelope collaborate on a grand masterpiece for the Artistry Gala, a prestigious event within the sketchbook world. Their creation seamlessly blends Pete's tenderness with Penelope's vibrancy, captivating the audience.

Act 6: Celebration and Inspiration

At the Artistry Gala, Pete and Penelope's masterpiece leaves the audience awe-inspired. Their journey of self-discovery and collaboration becomes a symbol of artistic unity. Their story inspires others to embrace their strengths and appreciate the beauty in working together.

Conclusion: The Legacy of Creativity

Pete and Penelope's legacy lives on as they continue to create, their unique partnership flourishing as they inspire artists across sketchbooks. Their story reminds everyone that true artistry lies in the fusion of differences, in recognizing the power of collaboration, and in discovering the magic within themselves.

3.2 Character update. [Deep Analysis]

In the heart of "The Perfect Pair," the characters of Pete and Penelope are the driving forces behind the themes of friendship, collaboration, and self-discovery. Through their unique personalities and journeys, they embody the essence of the narrative, creating a relatable and impactful experience for the audience.

Pete:

Physical Traits:

Pete is a pencil with a slender and delicate appearance. His worn wood exudes a sense of nostalgia, hinting at his introspective nature. His lead, while soft and subtle, carries a world of emotions within.

Personality:

Pete is gentle, thoughtful, and introspective. He approaches life with a quiet curiosity, always seeking the depth within every line he creates. However, his gentle demeanor belies his growing self-doubt, stemming from his perception of inadequacy compared to Penelope's bold strokes.

Internal Conflict:

Pete's internal struggle forms a core aspect of his character arc. His self-doubt and feelings of inadequacy create emotional turmoil, leading him to withdraw from his partnership with Penelope. His journey revolves around overcoming these insecurities and embracing his own value.

Growth:

Pete's growth centers on self-discovery and self-acceptance. As he embarks on a journey of understanding, he learns that his delicate lines bring a unique emotional depth to their creations. Through his reconciliation with Penelope and their collaboration on the grand masterpiece, Pete's character evolves into someone who values his own strengths.

Penelope:**Physical Traits:**

Penelope is a pen with a sleek and modern design. Her vibrant colors and confident structure mirror her bold personality. Her ink flows freely, symbolizing her vivacity and eagerness to express herself.

Personality:

Penelope is adventurous, enthusiastic, and confident. She thrives on exploring new artistic horizons and believes in embracing the vividness of life. Her boldness, however, blinds her to Pete's internal struggle until she notices his absence.

External Journey:

Penelope's journey involves embarking on a quest to find Pete and understand the source of his pain. Along the way, she encounters personified elements of art that guide her to the realization that every stroke, whether delicate or bold, has its significance.

Impact on Pete:

Penelope's reassurance and wisdom play a pivotal role in Pete's growth. Through her encouragement, she helps Pete recognize the value of his soft lines and the beauty they bring to their collaborative process.

Collaborative Growth:

Penelope's journey also involves growing as a friend and collaborator. She learns that her bold strokes find their true brilliance when harmonized with Pete's tender lines. Her realization reinforces the narrative's theme of collaboration and the strength derived from recognizing each other's strengths.

Interwoven Journeys:

The journeys of Pete and Penelope are intricately interwoven, forming a compelling narrative that highlights their individual growth and the power of their partnership. As they navigate their internal struggles and overcome obstacles together, their bond strengthens, ultimately leading to a transformation that celebrates their unique qualities and their collaborative magic.

In "The Perfect Pair," Pete and Penelope emerge as relatable and inspirational characters, guiding the audience through a journey of emotional depth, artistic exploration, and the profound beauty of friendship. Their evolution showcases the importance of embracing individual strengths while celebrating the magic that emerges when those strengths unite in collaboration.

3.3 Dramatically Theme Analysis

The dramatic themes of friendship, collaboration, and self-discovery form the emotional core of "The Perfect Pair," infusing the narrative with depth, relatability, and resonance. These themes not only drive the characters' arcs but also resonate with the audience on a universal level, making the story compelling and impactful.

Friendship:

At its core, "The Perfect Pair" celebrates the transformative power of friendship. Through the characters of Pete and Penelope, the story illustrates how genuine friendship provides unwavering support, understanding, and encouragement. The evolution of their bond, from a perfect partnership to a relationship challenged by doubt and rediscovered through shared experiences, reflects the complexities and beauty of genuine friendships.

Collaboration:

The theme of collaboration is intricately woven throughout the narrative. Pete and Penelope's artistic collaboration parallels their emotional journey. The synergy between their abilities symbolizes the magic that emerges when individuals come together, each contributing their unique strengths to create something greater than themselves. The story emphasizes that collaboration transcends competition and comparison, leading to extraordinary outcomes.

In Maya, initiate by generating a box primitive. Modify its dimensions to mirror a book's shape. Sculpt the box utilizing vertices for pages and a spine. Include edges for a realistic appearance. Craft the model to represent an open book. Refine details as desired.

Self-Discovery:

Pete's journey of self-discovery serves as a catalyst for personal growth and transformation. His internal struggle with self-doubt resonates with anyone who has questioned their own worth. Through Penelope's guidance and the encounters with personified elements of art, Pete embarks on a quest of introspection. His realization that his gentle lines possess their own significance highlights the importance of embracing one's individuality and recognizing the value in what one brings to the table.

Emotional Resonance:

The dramatic themes create emotional resonance by tapping into universal human experiences. Audiences can relate to the complexities of friendship, the joys and challenges of collaboration, and the journey of self-discovery. As Pete and Penelope navigate these themes, their experiences become mirrors for the audience's own relationships, creative endeavors, and personal growth.

Narrative Impact:

The exploration of friendship, collaboration, and self-discovery amplifies the narrative's impact. Audiences are not only entertained by the characters' journey but also invited to reflect on their own lives. The themes inspire introspection and discussions about the significance of relationships, working together, and understanding one's self-worth.

In essence, the dramatic themes of "The Perfect Pair" form the foundation upon which the narrative's emotional and narrative arcs are built. They provide depth, authenticity, and relatability, transforming the story into a timeless exploration of human connections, creative synergy, and the transformative journey towards self-acceptance.

3.3.1 Environment Creation

The environments in "The Perfect Pair" play a crucial role in enhancing the narrative's themes of friendship, collaboration, and self-discovery. Each setting serves as a visual and emotional backdrop that mirrors the characters' journeys and underscores the story's core messages. Let's delve into how the environments can be crafted to reflect these themes:

1. Initial Sketchbook World:

The story begins in a vibrant and imaginative world within the sketchbook. This setting is brimming with endless possibilities, representing the boundless potential of friendship and collaboration. The landscapes are a blend of soft and bold elements, reflecting Pete and Penelope's unique artistic styles. As they create together, this world comes to life, showcasing the beauty that emerges when different talents unite.

2. Pete's Self-Doubt Haven:

When Pete starts doubting himself, his favorite corner of the sketchbook becomes dull and colorless. The landscapes lose their luster, mirroring Pete's emotional state. This environment visually symbolizes his inner turmoil, emphasizing his need for self-discovery and growth.

3. Penelope's Quest Landscapes:

As Penelope embarks on her quest to find Pete, she journeys through diverse landscapes that represent different aspects of creativity. Each environment she encounters teaches her a lesson about collaboration and the significance of every stroke. These landscapes transition from stark and unremarkable to vibrant and harmonious, reflecting her evolving perspective.

4. Reconciliation Scene:

The setting where Pete and Penelope reunite is a fusion of delicate and bold elements. Flowers with soft petals blend seamlessly with trees bearing vibrant fruits. This visually represents their renewed partnership, where Pete's gentle lines and Penelope's bold strokes come together in harmony.

5. Creating the Masterpiece:

The setting where Pete and Penelope collaborate on their grand masterpiece is a canvas of unity. It features a balance of intricate and striking elements, embodying the core theme of collaboration. Their creation emerges as a testament to their journey, showcasing the power of embracing both delicate and bold strokes.

6. Artistry Gala:

The Artistry Gala setting is grand and awe-inspiring, a celebration of diverse artistic expressions. The attendees' artworks reflect a spectrum of styles and techniques, reinforcing the narrative's message that every contribution is essential in the world of creativity.

By thoughtfully crafting these environments, you reinforce the story's themes visually, creating a sensory experience that resonates with the audience. The evolving settings mirror the characters' emotional arcs and journey towards self-discovery, unity, and the celebration of unique talents.

CHAPTER 4

STORY WRITING

The Perfect Pair

এক সময় পিট নামে একটি পেন্সিল এবং পেনেলোপ নামে একটি কলম থাকত। তারা স্কেচ বই, কাগজ, এবং সৃজনশীলতার জন্য অফুরন্ত সম্ভাবনার জগতে বাস করত। তাদের উভয়েরই অনন্য ক্ষমতা ছিল, পিটের নরম এবং সূক্ষ্ম লাইন তৈরি করার ক্ষমতা ছিল, যখন পেনেলোপ সাহসী এবং আকর্ষণীয় লাইন তৈরি করতে পারে।

একদিন, পিট এবং পেনেলোপ একটি স্কেচবুকে দেখা করলেন এবং দ্রুত সেরা বন্ধু হয়ে উঠলেন। তারা একসাথে তৈরি করতে পছন্দ করত এবং তাদের স্কেচগুলিকে প্রাণবন্ত করে বইটিতে ঘন্টার পর ঘন্টা ব্যয় করত।

তাদের একটি নিখুঁত অংশীদারিত্ব ছিল, পিট রূপরেখা তৈরি করেছিলেন এবং পেনেলোপ বিশদ বিবরণ যুক্ত করেছিলেন। যাইহোক, সময়ের সাথে সাথে পিট পেনেলোপের কাছে নিকৃষ্ট বোধ করতে শুরু করে। তিনি অনুভব করেছিলেন যে তার নরম লাইনগুলি পেনেলোপের সাহসী লাইনগুলির মতো গুরুত্বপূর্ণ নয় এবং তাদের অংশীদারিত্ব সমান নয়।

তিনি দুঃখিত হয়ে ওঠেন এবং তাদের সৃজনশীল অধিবেশন থেকে একসঙ্গে প্রত্যাহার করে নেন। পেনেলোপ পিটের অনুপস্থিতি লক্ষ্য করেছেন এবং তার সেরা বন্ধুকে ভয়ানকভাবে মিস করেছেন। তিনি তাকে খুঁজে বের করার সিদ্ধান্ত নিয়েছিলেন এবং তাকে জিজ্ঞাসা করেছিলেন কি ভুল ছিল।

পিট তার নিরাপত্তাহীনতা এবং অপরিপূর্ণতার অনুভূতি শেষার করেছেন এবং পেনেলোপ হৃদয় ভেঙে পড়েছেন। তিনি পিটকে বলেছিলেন যে তিনি তাদের অংশীদারিত্বের জন্য তার মতোই গুরুত্বপূর্ণ ছিলেন এবং তার নরম লাইনগুলি তাদের স্কেচগুলিতে একটি কোমলতা এবং আবেগ নিয়ে আসে যা একা সাহসী

লাইন দিয়ে অর্জন করা যায় না।

তিনি তাকে স্বরণ করিয়ে দিয়েছিলেন যে তারা একটি পূর্ণাঙ্গের দুটি অর্ধেক এবং তাদের সৃজনশীলতা আলাদা হওয়ার চেয়ে একসাথে শক্তিশালী।

পেনেলোপের কথায় স্পর্শ পেয়ে পিট তার কথার সত্যতা বুঝতে পেরেছিলেন। তিনি তাদের সৃজনশীল অধিবেশনে ফিরে আসেন এবং দুই বন্ধু তাদের স্কেচগুলিকে জীবন্ত করে তুলতে থাকে, প্রত্যেকে তাদের নিজস্ব ক্ষমতা ব্যবহার করে সুন্দর এবং আবেগময় কিছু তৈরি করে।

সেই দিন থেকে, পিট এবং পেনেলোপ কখনই তাদের বন্ধুত্বের গুরুত্ব এবং তাদের অংশীদারিত্বের শক্তি ভুলে যাননি। তারা একসাথে তৈরি করতে থাকে, তাদের মানসিক স্কেচ দিয়ে অন্যদের অনুপ্রাণিত করে এবং তাদের মনে করিয়ে দেয় যে কারও ক্ষমতা খুব ছোট বা গুরুত্বহীন নয়।

{No one's importance is too insignificant or inferior}

CHAPTER 5

VISUALIZATION ANALYSIS

5.1 Script Writing

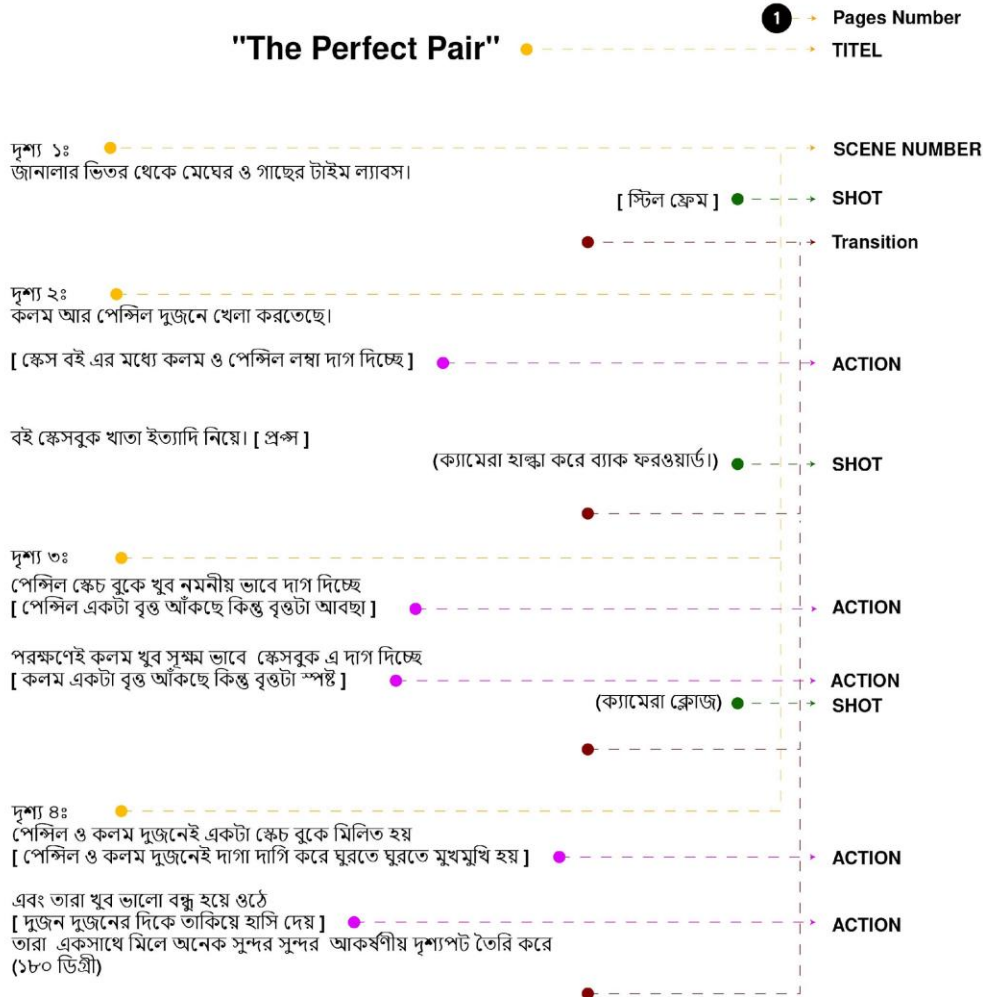


Figure 5.1_ "Script Writing"

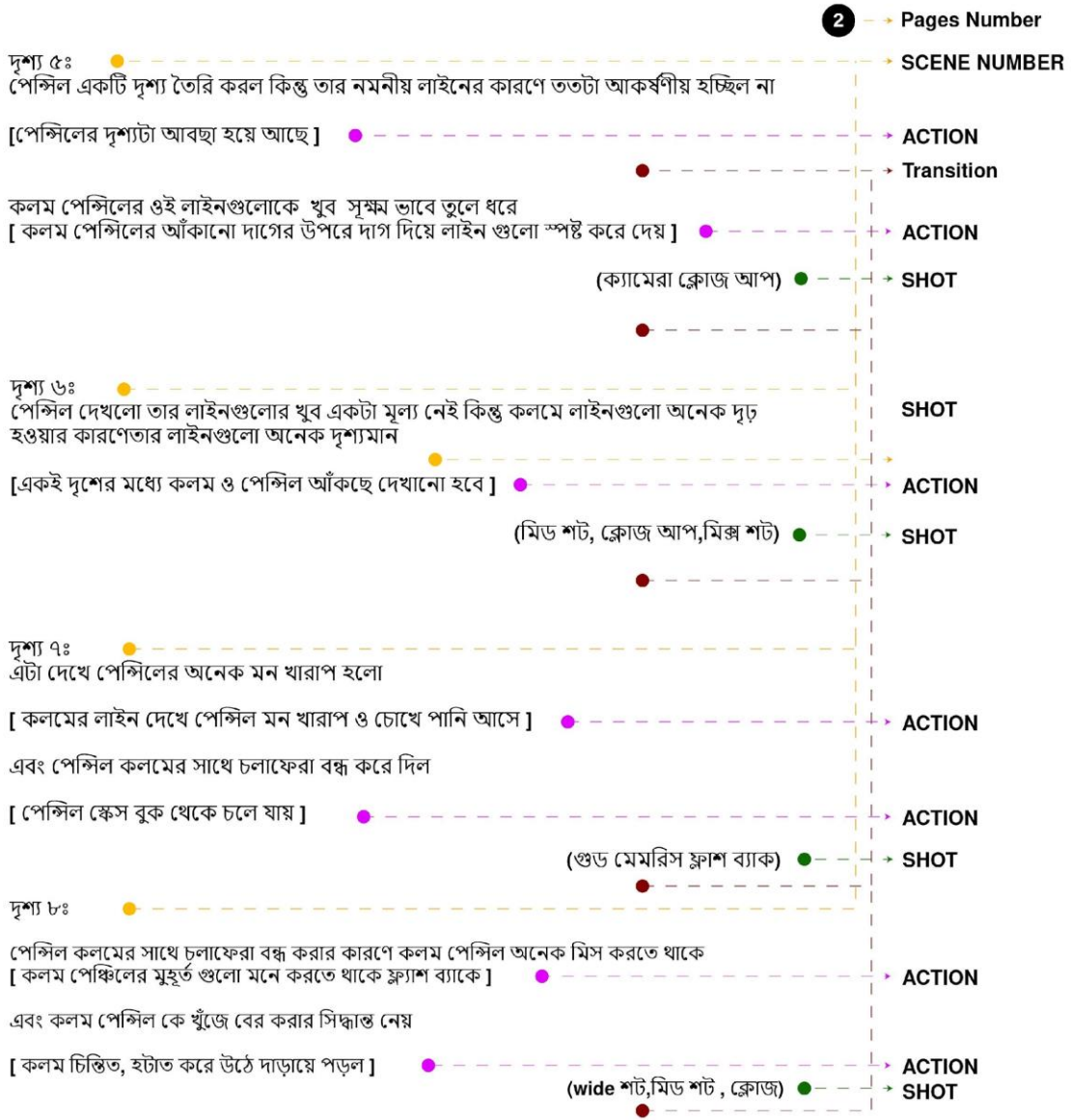


Figure 5.2_”Script Writing”

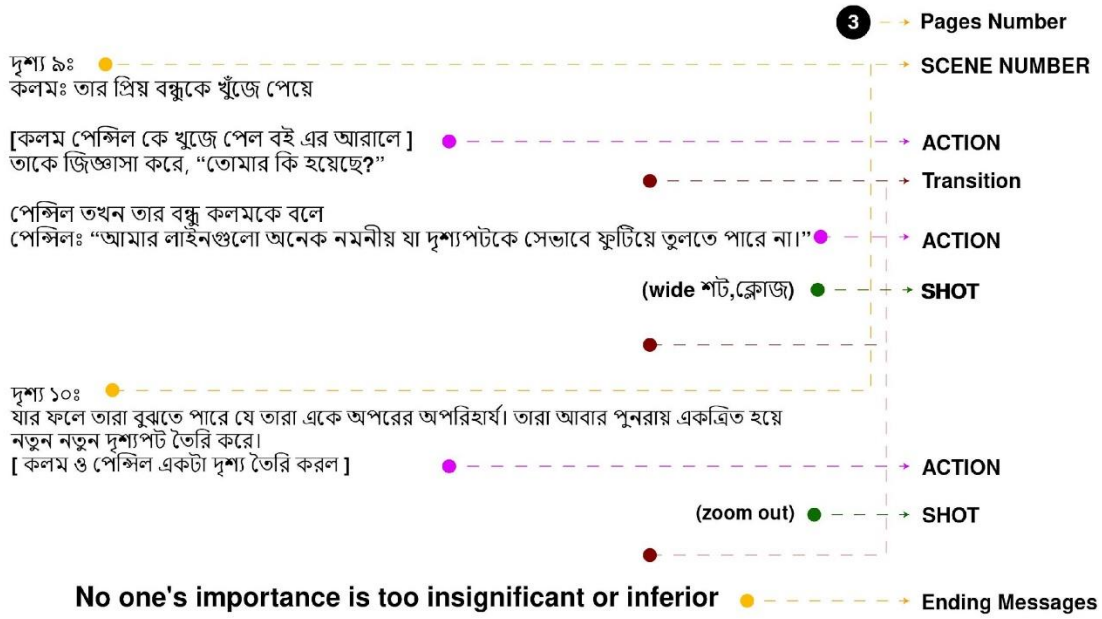


Figure 5.3_”Script Writing”

5.2 Screen Play

"The Perfect Pair"

প্রথম দৃশ্য: মেঘের টাইম ল্যাবস (জানালা থেকে মেঘের)।

দ্বিতীয় দৃশ্য: কলম আর পেন্সিল দুজনে খেলা করতেছে বই স্কেসবুক খাতা ইত্যাদি নিয়ে। (ক্যামেরা হাক্কা করে ব্যাক ফরওয়ার্ড।)

তৃতীয় দৃশ্য: পেন্সিল স্কেচ বুক খুব নমনীয় ভাবে দাগ দিচ্ছে এবং পরক্ষণেই কলম খুব সূক্ষ্ম ভাবে স্কেসবুক এ দাগ দিচ্ছে। (ক্যামেরা ক্লোজ)

চতুর্থ দৃশ্য: পেন্সিল ও কলম দুজনেই একটা স্কেচ বুক মিলিত হয়। এবং তারা খুব ভালো বন্ধু হয়ে ওঠে। তারা একসাথে মিলে অনেক সুন্দর সুন্দর আকর্ষণীয় দৃশ্যপট তৈরি করে। (১৮০ ডিগ্রী)

পঞ্চম দৃশ্য: পেন্সিল একটি দৃশ্য তৈরি করল কিন্তু তার নমনীয় লাইনের কারণে ততটা আকর্ষণীয় হচ্ছিল না। কলম পেন্সিলের ওই লাইনগুলোকে খুব সূক্ষ্ম ভাবে তুলে ধরে। (ক্যামেরা ক্লোজ আপ)

ষষ্ঠ দৃশ্য: পেন্সিল দেখলো তার লাইনগুলোর খুব একটা মূল্য নাই কিন্তু কলমে লাইনগুলো অনেক দৃঢ় হওয়ার কারণে তার লাইনগুলো অনেক দৃশ্যমান। এটা দেখে পেন্সিলের অনেক মন খারাপ হলো। এবং পেন্সিল কলমের সাথে চলাফেরা বন্ধ করে দিল। (মিড শট, ক্লোজ আপ, মিক্স শট)

সপ্তম দৃশ্য: পেন্সিল কলমের সাথে চলাফেরা বন্ধ করার কারণে কলম পেন্সিল অনেক মিস করতে থাকে। এবং কলম পেন্সিল কে খুঁজে বের করার সিদ্ধান্ত নেয়। (গুড মেমরিস ফ্লাশ ব্যাক)

অষ্টম দৃশ্য: কলম তার প্রিয় বন্ধুকে খুঁজে পেয়ে তাকে জিজ্ঞাসা করে তোমার কি হয়েছে? পেন্সিল তখন তার বন্ধু কলমকে বলে আমার লাইনগুলো অনেক নমনীয় যা দৃশ্যপটকে সেভাবে ফুটিয়ে তুলতে পারে না। (wide শট, মিড শট , ক্লোজ)

নবম দৃশ্য: যার ফলে তারা বুঝতে পারে যে তারা একে অপরের অপরিহার্য। তারা আবার পুনরায় একত্রিত হয়ে নতুন নতুন দৃশ্যপট তৈরি করে। (zoom out)

{No one's importance is too insignificant or inferior}

5.3 Storyboarding

Production title : "The Perfect Pair"		Date : 19. 03. 2023	Page : 01
---------------------------------------	--	---------------------	-----------




<table border="1" style="width: 100%; border-collapse: collapse;"> <tr> <td style="width: 30%;">Scene : 03</td> <td style="width: 30%;">Shot : 03</td> <td style="width: 40%;"></td> </tr> <tr> <td colspan="3" style="text-align: center;">  </td> </tr> <tr> <td colspan="3">Dialogue :</td> </tr> <tr> <td colspan="3">Action : [ঘরের টপ থেকে ভিউ] (কাট সিন)</td> </tr> <tr> <td colspan="3">Timing :</td> </tr> <tr> <td colspan="3">Sound FX :</td> </tr> </table>	Scene : 03	Shot : 03					Dialogue :			Action : [ঘরের টপ থেকে ভিউ] (কাট সিন)			Timing :			Sound FX :			<table border="1" style="width: 100%; border-collapse: collapse;"> <tr> <td style="width: 30%;">Scene : 04</td> <td style="width: 30%;">Shot : 04</td> <td style="width: 40%;"></td> </tr> <tr> <td colspan="3" style="text-align: center;">  </td> </tr> <tr> <td colspan="3">Dialogue :</td> </tr> <tr> <td colspan="3">Action : [টেবিলের টপ থেকে ভিউ] (কাট সিন)</td> </tr> <tr> <td colspan="3">Timing :</td> </tr> <tr> <td colspan="3">Sound FX :</td> </tr> </table>	Scene : 04	Shot : 04					Dialogue :			Action : [টেবিলের টপ থেকে ভিউ] (কাট সিন)			Timing :			Sound FX :		
Scene : 03	Shot : 03																																				
																																					
Dialogue :																																					
Action : [ঘরের টপ থেকে ভিউ] (কাট সিন)																																					
Timing :																																					
Sound FX :																																					
Scene : 04	Shot : 04																																				
																																					
Dialogue :																																					
Action : [টেবিলের টপ থেকে ভিউ] (কাট সিন)																																					
Timing :																																					
Sound FX :																																					

Figure 5.4_”Script Writing”

Production title : "The Perfect Pair"		Date : 19. 03. 2023	Page : 01
---------------------------------------	--	---------------------	-----------

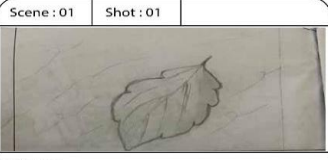
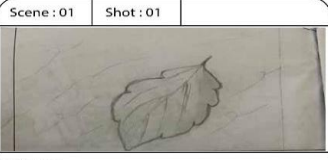
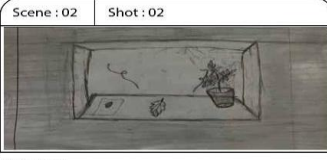
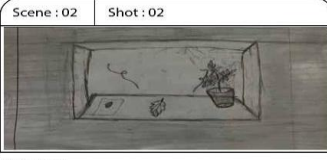
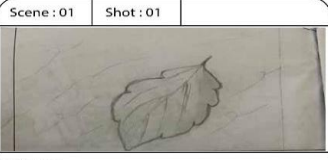
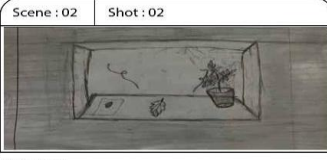
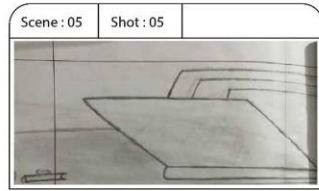
<table border="1" style="width: 100%; border-collapse: collapse;"> <tr> <td style="width: 30%;">Scene : 01</td> <td style="width: 30%;">Shot : 01</td> <td style="width: 40%;"></td> </tr> <tr> <td colspan="3" style="text-align: center;">  </td> </tr> <tr> <td colspan="3">Dialogue :</td> </tr> <tr> <td colspan="3">Action : [একটা পাতা উড়ে আসবে] (ক্যামেরা পাতায়ে ফোকাস।)</td> </tr> <tr> <td colspan="3">Timing :</td> </tr> <tr> <td colspan="3">Sound FX :</td> </tr> </table>	Scene : 01	Shot : 01					Dialogue :			Action : [একটা পাতা উড়ে আসবে] (ক্যামেরা পাতায়ে ফোকাস।)			Timing :			Sound FX :			<table border="1" style="width: 100%; border-collapse: collapse;"> <tr> <td style="width: 30%;">Scene : 02</td> <td style="width: 30%;">Shot : 02</td> <td style="width: 40%;"></td> </tr> <tr> <td colspan="3" style="text-align: center;">  </td> </tr> <tr> <td colspan="3">Dialogue :</td> </tr> <tr> <td colspan="3">Action : [পাতাটা উড়ে এসে জানার উপরে পরবে] (ক্যামেরা জানালায় ফোকাস।)</td> </tr> <tr> <td colspan="3">Timing :</td> </tr> <tr> <td colspan="3">Sound FX :</td> </tr> </table>	Scene : 02	Shot : 02					Dialogue :			Action : [পাতাটা উড়ে এসে জানার উপরে পরবে] (ক্যামেরা জানালায় ফোকাস।)			Timing :			Sound FX :		
Scene : 01	Shot : 01																																				
																																					
Dialogue :																																					
Action : [একটা পাতা উড়ে আসবে] (ক্যামেরা পাতায়ে ফোকাস।)																																					
Timing :																																					
Sound FX :																																					
Scene : 02	Shot : 02																																				
																																					
Dialogue :																																					
Action : [পাতাটা উড়ে এসে জানার উপরে পরবে] (ক্যামেরা জানালায় ফোকাস।)																																					
Timing :																																					
Sound FX :																																					

Figure 5.5_”Script Writing”

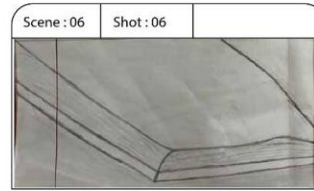


Dialogue :

Action : [বই খোলার ভিউ
কাট সিন]

Timing :

Sound FX :



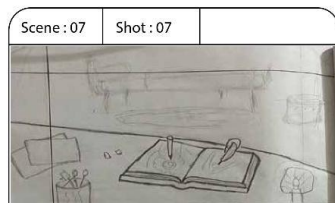
Dialogue :

Action : [খোলা বই ভিউ
কাট সিন]

Timing :

Sound FX :

Figure 5.6_ "Script Writing"

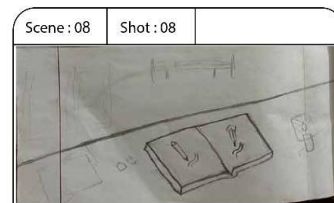


Dialogue : কলম আর পেন্সিল দুজনে খেলা করতেছে বই কেসবুক খাতা ইত্যাদি নিয়ে।

Action : [কেস বই এর মধ্যে কলম ও পেন্সিল লম্বা দাগ দিচ্ছে]
বই কেসবুক খাতা ইত্যাদি নিয়ে। [প্রপ্স]
(ক্যামেরা হান্ডা করে ব্যাক ফরওয়ার্ড।)

Timing :

Sound FX :



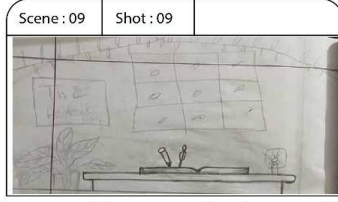
Dialogue : পেন্সিল ফ্লেক বুক খুব নমনীয় ভাবে দাগ দিচ্ছে এবং পরক্ষণেই কলম খুব সূক্ষ্ম ভাবে কেসবুক এ দাগ দিচ্ছে।

Action : [পেন্সিল আঁকছে কিন্তু আবছা]
[কলম আঁকছে কিন্তু স্পষ্ট]
(ক্যামেরা ক্লোজ)

Timing :

Sound FX : মেঘের আনুসঙ্গিক শব্দ হবে।

Figure 5.7_ "Script Writing"

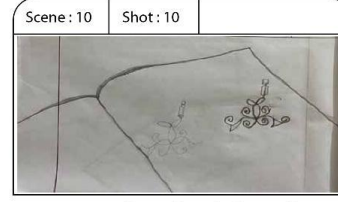


Dialogue: পেন্সিল ও কলম দুজনেই একটা স্কেচ বুককে মিলিত হয়। এবং তারা খুব ভালো বন্ধ হয়ে ওঠে। তারা একসাথে মিলে অনেক সুন্দর সুন্দর আকর্ষণীয় দৃশ্যপট তৈরি করে।

Action: [পেন্সিল ও কলম দুজনেই দাগা দাগি করে ঘুরতে ঘুরতে মুখমুখি হয়] [দুজন দুজনের দিকে তাকিয়ে হাসি দেয়] তারা একসাথে মিলে অনেক সুন্দর সুন্দর আকর্ষণীয় দৃশ্যপট তৈরি করে (১৮০ ডিগ্রী) ভাবে দেখানো হবে।

Timing:

Sound FX:



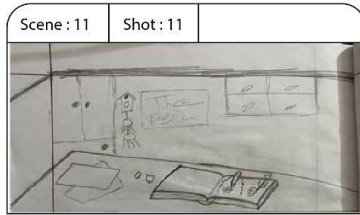
Dialogue: পেন্সিল একটি দৃশ্য তৈরি করল, কিন্তু তার নমনীয় লাইনের কারণে ততো আকর্ষণীয় হচ্ছিল না। কলম পেন্সিলের ওই লাইনগুলোকে খুব সুন্দর ভাবে তুলে ধরে।

Action: [পেন্সিলের দৃশ্যটা আবছা হয়ে আছে] [কলম পেন্সিলের অঁকানো দাগের উপরে দাগ দিয়ে লাইন গুলো স্পষ্ট করে দেয়] [ক্যামেরা ক্লোজ আপ]

Timing:

Sound FX: মেঘের আনুসঙ্গিক শব্দ হবে।

Figure 5.8_ "Script Writing"

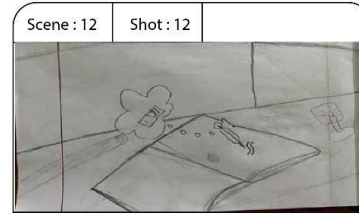


Dialogue: পেন্সিল দেখলো তার লাইনগুলোর খুব একটা মূল্য নাই কিন্তু কলমে লাইনগুলো অনেক দৃঢ় হওয়ার কারণে তার লাইনগুলো অনেক দৃশ্যমান। এটা দেখে পেন্সিলের অনেক মন খারাপ হলো। এবং পেন্সিল কলমের সাথে চলাফেরা বন্ধ করে দিল।

Action: [একই দৃশের মধ্যে কলম ও পেন্সিল আঁকছে দেখানো হবে] (মিড শট, ক্লোজ আপ, মিক্স শট)

Timing:

Sound FX:



Dialogue: পেন্সিল কলমের সাথে চলাফেরা বন্ধ করার কারণে কলম পেন্সিল অনেক মিস করতে থাকে। এবং কলম পেন্সিল কে খুঁজে বের করার সিদ্ধান্ত নেয়।

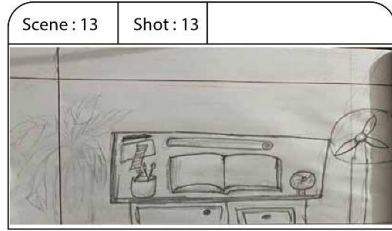
Action: [কলমের লাইন দেখে পেন্সিল মন খারাপ ও চোখে পানি আসে] [পেন্সিল স্কেচ বুক থেকে চলে যায়] [গুড মেমরিস ফ্লাশ ব্যাক]

Timing:

Sound FX: মেঘের আনুসঙ্গিক শব্দ হবে।

Figure 5.9_ "Script Writing"

Production title : "The Perfect Pair"	Date : 19. 03. 2023	Page : 04
---------------------------------------	---------------------	-----------

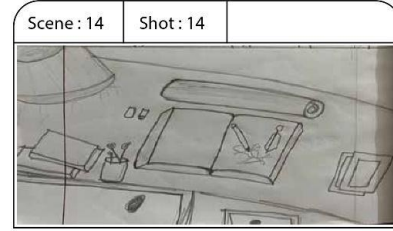


Dialogue : কলম তার প্রিয় বন্ধুকে খুঁজে পেয়ে তাকে জিজ্ঞাসা করে "তোমার কি হয়েছে?" পেন্সিল তখন তার বন্ধু কলমকে বলে "আমার লাইনগুলো অনেক নমনীয় যা দৃশ্যপটকে সেভাবে ফুটিয়ে তুলতে পারে না।"

Action : কলম পেন্সিলের মুহূর্তগুলো মনে করতে থাকে ফ্ল্যাশ ব্যাকে [কলম চিন্তিত, হটাত করে উঠে দাড়ায়ে পড়ল]
(wide শট, মিদ শট, ক্লোজ)

Timing :

Sound FX :



Dialogue : যার ফলে তারা বুঝতে পারে যে তারা একে অপরের অপরিহার্য। তারা আবার পুনরায় একত্রিত হয়ে নতুন নতুন দৃশ্যপট তৈরি করে।

Action : (zoom out)

Timing :

Sound FX : মেঘের আনুসঙ্গিক শব্দ হবে।

Figure 5.10_ "Script Writing"

CHAPTER 6

EVALUATION

6.1 Analysis [What types of message is throwing to the culture?]

"The Perfect Pair" conveys several meaningful messages to the culture, touching on themes of individuality, collaboration, and the value of embracing diverse strengths. The story's messages resonate deeply with cultural values and ideals, offering insights that can inspire and uplift.

1. Embracing Individuality:

The story emphasizes the importance of recognizing and valuing one's unique qualities. Pete's journey of self-discovery reflects the cultural message that each individual has their own worth and contributes something valuable to the world. This message aligns with societies that value self-expression and personal growth.

2. Fostering Collaboration:

Through Pete and Penelope's creative partnership, the narrative promotes collaboration over competition. The story encourages cultures that prioritize cooperation and collective success, highlighting the beauty that arises when people with different strengths come together to create something extraordinary.

3. Challenging Stereotypes:

The characters' abilities challenge traditional notions of strength and value. By showing that both delicate lines and bold strokes have their place, the story challenges cultural norms that often emphasize certain qualities over others. This challenges societies to reevaluate stereotypes and appreciate the diversity of talents.

4. Promoting Unity:

"The Perfect Pair" celebrates unity and the power of working together. This message is relevant in cultures that emphasize community, harmony, and social bonds. The story's portrayal of collaboration leading to remarkable achievements resonates with cultures that value collective achievements.

5. Inspiring Self-Discovery:

Pete's journey of overcoming self-doubt and discovering his own worth resonates with cultures that encourage self-awareness and personal growth. The narrative encourages individuals to explore their strengths and find their unique contributions to the world.

6. Value of Emotional Depth:

The emotional depth brought by Pete's delicate lines represents the importance of emotions and sensitivity. This message aligns with cultures that value emotional intelligence, empathy, and the ability to convey deep feelings through art and expression.

7. Celebrating Art and Creativity:

The story's setting within sketchbooks and its celebration of the artistic process align with cultures that value creativity, imagination, and the power of artistic expression as a means of communication and cultural preservation.

Overall, "The Perfect Pair" delivers messages that resonate with a variety of cultural values, from individualism to collaboration, and from self-discovery to the celebration of diverse talents. By weaving these messages into the narrative, the story has the potential to inspire audiences across cultures to embrace their unique qualities, work together harmoniously, and recognize the value in every contribution.

6.2 Cultural Impact Analysis

"The Perfect Pair" carries the potential for significant cultural impact, as its themes of friendship, collaboration, and self-discovery resonate across diverse societies. The story's messages align with cultural values and can influence perspectives, behavior, and conversations in several ways:

1. Promoting Diversity of Strengths:

The narrative challenges cultural norms that prioritize certain qualities over others. By celebrating both delicate and bold artistic abilities, the story encourages societies to value a diverse range of strengths and talents. This impact can lead to more inclusive and accepting cultural attitudes.

2. Encouraging Collaboration and Unity:

The story's emphasis on collaboration over competition aligns with cultures that value teamwork, community, and mutual support. By portraying the power of diverse talents uniting, "The Perfect Pair" can inspire collective efforts and initiatives within cultural contexts that prioritize collaboration.

3. Supporting Self-Discovery and Personal Growth:

Pete's journey of self-discovery reflects cultural ideals of introspection and personal development. The narrative can inspire individuals in cultures that emphasize self-awareness and continuous improvement, encouraging them to embrace their uniqueness and recognize their worth.

4. Challenging Stereotypes:

The characters' abilities challenge societal stereotypes by showcasing the significance of seemingly subtle contributions. This impact can lead to cultural conversations about the value of diverse qualities and the need to break free from limited perceptions.

5. Fostering Emotional Expression:

In cultures that value emotional intelligence and artistic expression, the emotional depth brought by Pete's delicate lines can be particularly impactful. The story can encourage individuals to express their emotions through art, writing, and other creative mediums.

6. Empowering Collaboration in Arts and Beyond:

The narrative's celebration of collaborative artistry can extend beyond the creative realm. The impact may encourage collaborative problem-solving, innovation, and partnerships across various fields, fostering a culture of shared success.

7. Resonating with Youth and Education:

Cultural impact often starts with younger generations. "The Perfect Pair" can resonate with youth, promoting values of acceptance, collaboration, and self-discovery. Teachers and educators may use the story to facilitate discussions on these important topics.

8. Cultural Dialogue and Identity:

The story's themes can spark discussions on cultural identity, individuality, and collective progress. Cultural impact may emerge from conversations about how these messages relate to specific cultural contexts and histories.

In essence, "The Perfect Pair" possesses the potential to influence cultural narratives, foster positive values, and encourage meaningful dialogues. Its themes align with universal human experiences while also respecting cultural nuances, making it a powerful tool for inspiring positive change and fostering a sense of unity through diversity.

6.3 Is it understandable?

Yes, the concept of "The Perfect Pair" is quite understandable. It tells the story of two artistic tools, Pete the pencil and Penelope the pen, who become best friends in a world of sketchbooks and creativity. Each character has a unique ability: Pete creates soft lines, while Penelope creates bold ones. They collaborate to bring their sketches to life. However, Pete begins to feel inferior due to his perceived shortcomings compared to Penelope's bold lines. He withdraws from their creative sessions. Penelope notices and seeks to understand his feelings. She helps him realize that his delicate lines have their own significance, and their collaboration is what truly matters. The story emphasizes the importance of valuing one's individual strengths, the beauty of collaboration, and the power of self-discovery. Ultimately, Pete and Penelope's journey strengthens their friendship and reminds them of the magic that emerges when different abilities work together. The themes and emotions conveyed in "The Perfect Pair" are relatable and universal, making the story easily understandable and engaging for a wide audience.

6.4 Your overall Criticism

"The Perfect Pair" presents a captivating and heartwarming narrative that explores themes of friendship, collaboration, and self-discovery. The concept effectively utilizes the metaphor of artistic tools to convey deeper emotional and philosophical messages, making it relatable and impactful for a diverse audience. The characters of Pete and Penelope are well-developed and exhibit distinct personalities that complement each other. Pete's journey of self-doubt and eventual self-acceptance adds depth to his character, while Penelope's role as a supportive and encouraging friend reinforces the importance of uplifting relationships. The story's progression, from their initial creative partnership to the challenges they face, adds a layer of emotional tension that keeps the audience engaged. The resolution, where Pete learns to appreciate his unique abilities and the value of their collaboration, is a satisfying conclusion that aligns with the story's themes. The cultural messages and impact analysis demonstrate a clear understanding of how the story's themes resonate within various cultural contexts. The consideration given to promoting diversity, collaboration, and self-expression makes the narrative relevant and inspiring. The inclusion of dialogue examples and environment descriptions enriches the reader's experience, allowing them to visualize the story's progression and emotional arcs more vividly. Overall, "The Perfect Pair" effectively conveys its messages through engaging characters, relatable themes, and thoughtful cultural analysis. It has the potential to resonate with a wide audience and spark meaningful conversations about friendship, collaboration, and the value of embracing one's unique strengths.

CHAPTER 7

DISCUSSION

In this report we delve into the incorporation of storytelling, modeling and texturing, in an animation project with a theme of friendship and unity. The narrative beautifully showcases the growth and bond, among characters. The detailed character modeling aimed to capture both realism and unique characteristics while intricate texturing techniques breathed life into them. This seamless blending of elements elevated the project by effectively conveying emotions and interactions. As a result, we have an animation that visually and thematically emphasizes the importance of friendship and unity. The seamless combination of storytelling, modeling and texturing played a role, in bringing forth a captivating animation that resonated with emotions. The evolution of the characters mirrored the attention given to their designs enhanced by texturing that made them relatable. In essence the integration of these elements highlighted the themes of friendship and unity taking the animation to heights as a profound and moving experience.

CHAPTER 8

CONCLUSION

The 3D animated short film we created, titled "The Perfect Pair," unfolds a heartwarming narrative. The story revolves around two characters, a pencil and a pen, who share a close friendship. Engaging in various activities together, the duo finds joy in each other's company. However, the pencil's perception of inadequacy drives a wedge between them. After recognizing their complementary roles, they reunite, reinforcing the significance of their bond. This tale explores themes of companionship, self-worth, and the value of unity.

REFERENCE

1. Discovering Animation Manuals: Their Place and Role in the History of Animation <https://journals.sagepub.com/doi/full/10.1177/17468477221080112> [01.08.2023]
2. How many feature films have Disney made so far? <https://rb.gy/901j7> [03.08.2023]
3. Wikipedia / Walt Disney Animation Studios https://en.wikipedia.org/wiki/Walt_Disney_Animation_Studios [03.08.2023]
4. Which studio made Umbrella Animation? <https://rb.gy/901j7> [03.08.2023]
5. YouTube \ UMBRELLA <https://www.youtube.com/watch?v=B11FOKpFY2Q> [03.08.2023]
6. Wikipedia / Pixar <https://en.wikipedia.org/wiki/Pixar> [04.08.2023]
7. Wikipedia / DREAMWORKS ANIMATION https://en.wikipedia.org/wiki/DreamWorks_Animation [04.08.2023]
8. Wikipedia / HOW TO TRAIN YOUR DRAGON [https://en.wikipedia.org/wiki/How_to_Train_Your_Dragon_\(film\)](https://en.wikipedia.org/wiki/How_to_Train_Your_Dragon_(film)) [05.08.2023]
9. Wikipedia / SONY PICTURES ANIMATION https://en.wikipedia.org/wiki/Sony_Pictures_Animation [05.08.2023]
10. Wikipedia / Baymax <https://en.wikipedia.org/wiki/Baymax!> [05.08.2023]
11. DOMESTIKA <https://www.domestika.org/en/blog/6198-21-3d-artists-you-should-know-in-2021> [05.08.2023]
12. TURNISLEFTHOME <https://turnislefthome.com/> [05.08.2023]
13. Wikipedia / History of the birth of animation https://en.wikipedia.org/wiki/History_of_animation [10.08.2023]
14. Britannica / History of the birth of animation <https://www.britannica.com/art/animation> [10..08.2023]
15. Masterclass / History of the birth of animation <https://www.masterclass.com/articles/a-guide-to-the-history-of-animation> [10..08.2023]

16. Tornado Studios / History of the birth of rendering <https://www.tornado-studios.com/blog/3d-rendering-brief-history-its-evolution> [10..08.2023]
17. Wikipedia / Autodesk Maya https://en.wikipedia.org/wiki/Autodesk_Maya [11..08.2023]
18. Wikipedia / Adobe Illustrator https://en.wikipedia.org/wiki/Adobe_Illustrator [11.08.2023]
19. Wikipedia / Adobe Photoshop https://en.wikipedia.org/wiki/Adobe_Photoshop [11.08.2023]
20. Shutter stock / Commonly used techniques <https://www.shutterstock.com/blog/3d-modeling-autodesk-maya> [11.08.2023]
21. Idea rocket / Concept and development <https://idearocketanimation.com/13721-12-principles-of-animation-gifs/> [16.08.2023]
22. Lesley University / Concept and development <https://lesley.edu/article/the-12-principles-of-animation> [16.08.2023]
23. Tornado Studios / History of the birth of rendering <https://www.tornado-studios.com/blog/3d-rendering-brief-history-its-evolution> [10..08.2023]
24. Shutter stock / Commonly used techniques <https://www.shutterstock.com/blog/3d-modeling-autodesk-maya> [11.08.2023]
25. Wikipedia / HOW TO TRAIN YOUR DRAGON
[https://en.wikipedia.org/wiki/How_to_Train_Your_Dragon_\(film\)](https://en.wikipedia.org/wiki/How_to_Train_Your_Dragon_(film)) [05.08.2023]
26. Wikipedia / Walt Disney Animation Studios
https://en.wikipedia.org/wiki/Walt_Disney_Animation_Studios [03.08.2023]