



ELSEVIER

Contents lists available at ScienceDirect

IJID Regions

journal homepage: www.elsevier.com/locate/ijregi

The disproportionate case–fatality ratio of COVID-19 between countries with the highest vaccination rates and the rest of the world

Najmul Haider^{a,b,†,*}, Mohammad Nayeem Hasan^{c,†}, Javier Guitian^a, Rumi A. Khan^d, David McCoy^e, Francine Ntoumi^{f,g}, Osman Dar^h, Rashid Ansumanaⁱ, Md. Jamal Uddin^{c,j,*}, Alimuddin Zumla^{k,l}, Richard A. Kock^a

^a The Royal Veterinary College, University of London, Hatfield, UK

^b School of Life Sciences, Keele University, Keele, UK

^c Department of Statistics, Shahjalal University of Science and Technology, Sylhet, Bangladesh

^d Division of Pulmonary Critical Care Medicine, Dell Medical School at University of Texas, Austin, Texas, USA

^e Institute of Population Health Sciences, Barts and London Medical and Dental School, Queen Mary University of London, London, UK

^f Congolese Foundation for Medical Research, Brazzaville, Republic of Congo

^g Institute for Tropical Medicine, University of Tübingen, Tübingen, Germany

^h Chatham House Centre for Global Health Security, Royal Institute of International Affairs, London, UK

ⁱ School of Community Health Science, Njala University, Bo, Sierra Leone

^j Department of General Educational and Development, Daffodil International University, Dhaka, Bangladesh

^k Division of Infection and Immunity, Centre for Clinical Microbiology, University College London, London, UK

^l NIHR-BRC, University College London Hospitals, London, UK

ARTICLE INFO

Keywords:

COVID-19

SARS-CoV-2

Case–fatality ratio

Vaccine equity

Variants of concern

Vaccine roll out

ABSTRACT

Objectives: The global reported cumulative case–fatality ratios (rCFRs) and excess mortality rates of the 20 countries with the highest coronavirus disease 2019 (COVID-19) vaccination rates, the rest of the world and Sub-Saharan Africa (SSA) were compared before and after the commencement of vaccination programmes.

Methods: A time series model was used to understand the trend of rCFR over time, and a generalized linear mixed model was used to understand the effect of vaccination on rCFR.

Results: By 31 December 2022, an average of 260.3 doses of COVID-19 vaccine per 100 population had been administered in the top 20 vaccinated countries, compared with 152.1 doses in the rest of the world and 51.2 doses in SSA. The mean rCFR of COVID-19 had decreased by 69.0% in the top 20 vaccinated countries, 26.5% in the rest of the world and 7.6% in SSA. Excess mortality had decreased by 48.7% in the top 20 vaccinated countries, compared with 62.5% in the rest of the world and 60.7% in SSA. In a generalized linear mixed model, the reported number of vaccine doses administered (/100 population) (odds ratio 0.64) was associated with a steeper reduction in COVID-19 rCFR.

Conclusions: Vaccine equity and faster roll-out across the world is critically important in reducing COVID-19 transmission and CFR.

Introduction

In the early stages of the coronavirus disease 2019 (COVID-19) pandemic, the World Health Organization (WHO) reported a crude case–fatality ratio (CFR) of 3.8% among the first 55,924 laboratory-confirmed cases [1]. Subsequently, systematic reviews reported an estimated CFR of COVID-19 between 2.3% and 3.6% [2–5]. The global cumulative reported case fatality ratio (rCFR) of COVID-19 increased until the 17th epidemiological week (22–28 April 2020) following the detection of se-

vere acute respiratory syndrome coronavirus-2 (SARS-CoV-2) in Wuhan, China to 7.2%, and then started to decline steadily (2.2% at 31 December 2021) [6].

Vaccination can reduce the CFR of COVID-19. Several vaccines have been approved for emergency use by the US Food and Drug Administration, the European Medicine Agency and the UK Health Security Agency. WHO has also approved the use of a few vaccines across the world. It has been estimated that, 7–28 days after receipt of the second dose of COVID-19 vaccine, infection is reduced by 60–92% [7,8], hospitaliza-

* Corresponding authors. Address: School of Life Sciences, Keele University, Keele ST5 5BG, UK.

E-mail addresses: n.haider@keele.ac.uk (N. Haider), jamal-sta@sust.edu (Md.J. Uddin).

† These authors contributed equally.

<https://doi.org/10.1016/j.ijregi.2023.01.011>

Received 8 November 2022; Received in revised form 16 January 2023; Accepted 21 January 2023

2772-7076/© 2023 The Authors. Published by Elsevier Ltd on behalf of International Society for Infectious Diseases. This is an open access article under the CC BY license (<http://creativecommons.org/licenses/by/4.0/>)

tions by 87–94% [7,9] and deaths by 72–100% [7,10] for the Alpha, Beta and Delta variants.

COVID-19 vaccines are not distributed equitably in the world [11]. Although COVID-19 vaccines were developed at an unprecedented rate through the advancement of science and global cooperation, the distribution of COVID-19 vaccines across the world is questionable [12]. Current global vaccination rates are approximately 6.7 million doses per day, and the vaccine distribution is absent or very limited in many low-income countries. Experts anticipated that 80% of the population in low-income countries would not have received any doses of COVID-19 vaccine by the end of 2021 [12], and this has proved to be the case.

As the world faces the third year of the COVID-19 pandemic, as of 31 December 2022, more than 660.35 million confirmed cases of COVID-19, including 6.69 million deaths, have been reported to WHO [13]. Globally, rollout of COVID-19 vaccination has progressed at varying rates, and the impact of mass vaccination on CFR should be explored in order to inform global access to the vaccine. To this end, this study compared the global rCFRs between the 20 countries with the highest vaccination rates (minimum 196.9 doses/100 population), sub-Saharan Africa (SSA) and the rest of the world, before and after commencement of vaccination programmes. In addition, associations between vaccination and other control measures and COVID-19 CFR and excess mortality were explored.

Methods

COVID-19 data

The necessary COVID-19-related data, including daily reported new cases, daily reported new deaths, reported total deaths, reported total deaths per million inhabitants and vaccination (number of doses of any COVID-19 vaccine administered/100 population), were collected from the WHO daily COVID-19 situation reports of 210 countries from 1 January 2020 to 31 December 2022 [14]. On 8 December 2020, the first approved COVID-19 vaccine was administered to a human [15]. Twenty-eight days after 8 December 2020 was considered as the cut-off to compare the pre-vaccine period (1 January 2020–5 January 2021) and the post-vaccine period (6 January 2021–31 December 2022). In total, data were obtained from 159 countries for analysis after the exclusion of countries with population <1 million. Of the 159 countries, 44 were from SSA (doses/100 population): Angola (66.6), Benin (31.7), Botswana (118.7), Burkina Faso (22.6), Burundi (0.2), Cameroon (14.3), Central African Republic (42.2), Chad (22.0), Democratic Republic of Congo (17.6), Congo (14.0), Cote d'Ivoire (84.4), Djibouti (30.2), Equatorial Guinea (29.2), Eritrea (0.0), Ethiopia (42.6), Gabon (24.0), Gambia (30.2), Ghana (63.9), Guinea (63.1), Guinea-Bissau (32.0), Kenya (42.7), Lesotho (54.6), Liberia (84.1), Madagascar (8.0), Malawi (31.2), Mali (19.2), Mauritania (85.6), Mauritius (201.1), Mozambique (88.4), Namibia (37.9), Niger (27.4), Nigeria (46.8), Rwanda (189.5), Senegal (15.7), Sierra Leone (71.6), Somalia (48.4), South Africa (63.5), South Sudan (21.2), Sudan (29.3), Tanzania (55.0), Togo (38.4), Uganda (55.7), Zambia (62.9) and Zimbabwe (74.9).

Identifying the top 20 vaccinated countries

The top 20 countries were those countries that consistently remained in the top 20 in terms of the weekly vaccination rate (/100 population) during the period 5 January 2021–31 December 2022. A count variable was used to identify the top 20 vaccinated countries each week, with a score of 1 if a country was listed in the top 20 countries in a particular week and zero otherwise. This procedure was repeated for each week until 31 August 2022. Finally, the 20 countries with the highest aggregated scores for weekly vaccination rate were selected. The 20 countries with the highest COVID-19 vaccination rates were (doses/100 population): Argentina (247.4), Bahrain (236.2), Belgium (253.8), Cambodia (269.0), Canada (250.4), Chile (319.5), China (243.9), Cuba (381.0),

Denmark (223.9), Ireland (220.8), Israel (196.9), Italy (242.9), Japan (300.0), Portugal (270.3), Qatar (282.0), Singapore (261.3), South Korea (250.2), United Arab Emirates (264.0), UK (224.0) and Uruguay (256.4).

Reported case–fatality ratio

The daily cumulative COVID-19 rCFR was calculated, as described previously [6], as the number of reported COVID-19-attributed deaths per 100 COVID-19 confirmed cases [i.e. $rCFR = (\text{weekly reported COVID-19 attributed deaths/weekly reported COVID-19 confirmed cases}) \times 100$]. As the numbers of reported cases and deaths both represent a fraction of the total numbers of cases and deaths globally, the term 'rCFR' was used [6].

Excess mortality

Excess mortality is used to describe the number of deaths from all causes during a particular period that is higher than expected under 'normal' circumstances [16]. Excess mortality was calculated as the difference between the recorded number of fatalities in a certain week or month (depending on the country) between January 2021 and December 2022, and an estimate of the projected deaths for that time period if the COVID-19 pandemic had not happened [17,18]. There are major difficulties associated with obtaining excess mortality data from many countries; however, 'Our World in Data' tracked data from different sources, and the authors were able to extract excess mortality data from 159 countries for the period from 5 January 2021 to 31 December 2022 [19].

Time series model to predict the trend

Three time series models [i.e. auto-regressive integrated moving average (ARIMA), automatic time-series forecasting model also known as 'Prophet model', and simple exponential smoothing (SES)] were used to identify the global trends in COVID-19 rCFR and excess mortality. The details of the SES, ARIMA and Prophet models are discussed elsewhere [6].

Outcome and predictor variables

Data on selected predictor variables were collected from the World Bank or other United Nations sources and from 'Our World in Data', including population density [20], percentage of people aged ≥ 65 years [21], Gross Domestic Product (GDP) [22], worldwide governance indicators [23], Global Health Security Index [24], and prevalence of obesity [25,26] for analysis. In addition, country-specific prevalence rates of diabetes [26] and cardiovascular disease [26] were included to explain the variation in COVID-19 rCFRs. The 'Stringency Index' from the Oxford COVID-19 Government Response Tracker was used [27].

Empirical evaluation

The ARIMA and Prophet models were assessed by comparing their results with the benchmark model, the SES model [28]. The SES model is the most appropriate non-seasonal model for each series, allowing for any kind of error or trend component. Next, the performances of the time series models were analysed and compared with some commonly used measures to evaluate the significance of predictions, including coefficient of determination (R^2), root mean square error (RMSE) and mean absolute error (MAE).

Generalized linear mixed model

A generalized linear mixed model (GLMM) with beta distribution was developed to identify whether the explanatory variables were associated with the country's COVID-19 rCFR and excess mortality. The

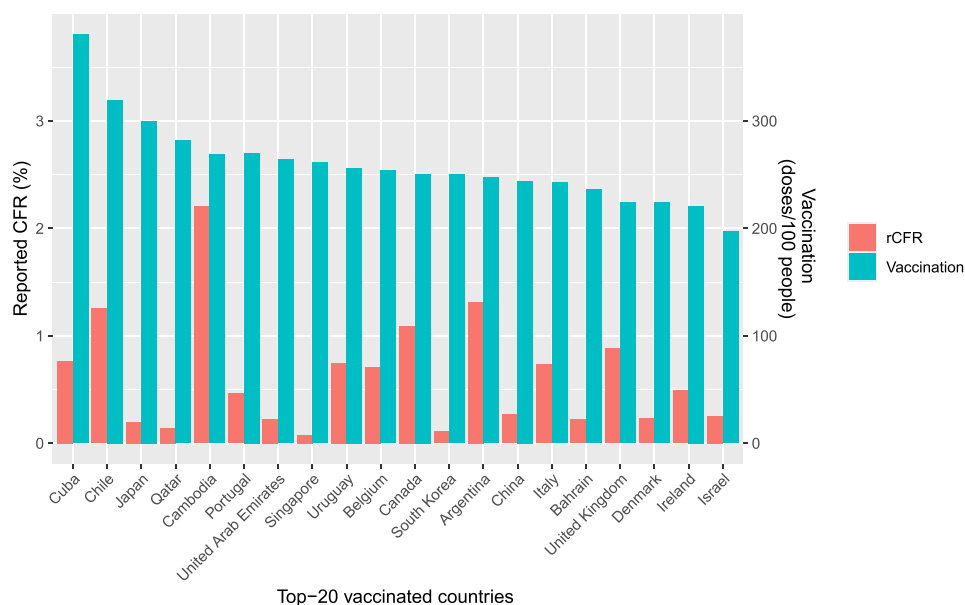


Figure 1. The 20 countries with the highest coronavirus disease 2019 (COVID-19) vaccination rates (reported number of vaccine doses administered/100 population) and the reported case–fatality ratios due to COVID-19. rCFR, reported case–fatality ratio.

GLMM is an extension of the generalized linear model that allows the analysis of clustered categorical data, as in the case of repeated responses from different subjects [29]. One of the key advantages of the GLMM is that it separates the levels of the models to account for the group effect nesting the lower-level observations. In the present study, there were several observations within the variable ‘locations (country or territory)’. While the location data are assumed to be time-invariant, the independent data are assumed to be universal over the whole study area at a certain time point. The model describes a beta distribution family that has a logit link.

Although the variables were selected carefully, and consistency was maintained with previous publications on the subject [6], the authors were not able to add some potential confounding variables, including the median age of cases in each country. All analyses were undertaken using R Version 3.5.2.2 [30].

Statistical analysis

Summary statistics of vaccine doses/100 population and rCFR were obtained by country for the 20 countries with the highest vaccination rates (Figure 1), SSA and the rest of the world before and after commencement of vaccination programmes, and the mean and standard error (SE) were reported. COVID-19 rCFR and excess mortality changed over time (Figure 2). The use of time series models alone would not enable identification of the reasons for the increasing and decreasing trends in COVID-19 rCFR and excess mortality.

Results

More than 660.35 million cumulative confirmed cases of COVID-19 and 6.69 million COVID-19-related deaths had been documented globally by 31 December 2022, and, on average, more than 165.40 doses of COVID-19 vaccine have been given per 100 population as of 31 December 2022. On average, for every 100 people, 260.33 doses of vaccines have been given in the top 20 COVID-19 vaccination countries. In the rest of the world (including SSA), 152.12 doses of COVID-19 vaccine have been given per 100 population, whereas the number is just 51.21 for SSA (Table 1). rCFR was estimated to be 1.89% in the top 20 vaccinated countries on 5 January 2021, and decreased by 69.31% to 0.58% on 31 December 2022. In the rest of the world, rCFR decreased from

2.34% on 5 January 2021 to 1.72% on 31 December 2022, which represents a reduction of only 26.50% (Table 1). In SSA, rCFR decreased by 7.61% over the same period (1.97 vs 1.82%). Between 5 January 2021 and 30 December 2022, excess mortality decreased by 48.65% in the top 20 vaccinated countries, compared with 62.50% in the rest of the world and 60.71% in SSA (Table 1). The correlation coefficient between vaccination rate (/100 population) and rCFR in different countries on 31 December 2022 is estimated to be -0.363 ($P < 0.001$), and -0.321 ($P < 0.001$) for excess mortality (Figure 3).

Factors associated with rCFR and excess mortality

In the GLMM, the estimated effect of each variable is presented as the odds ratio (OR). The reported number of vaccine doses administered (/100 population) [0.64 (0.62–0.65) and 0.96 (0.95–0.98)], GDP [0.79 (0.68–0.91) and 0.92 (0.89–0.96)] and Stringency Index [0.88 (0.87–0.89) and 1.13 [1.11–1.15]] were negatively significantly associated with COVID-19 rCFR and excess mortality, respectively (Table 2).

Table 2 includes various covariates and the random intercept in the model. The intraclass correlation coefficient of 0.682 was calculated by dividing the variance of the random effect by the total variance. Thus, the spatial unit effects account for approximately 68.2% of the total variance in weekly rCFR, which suggests moderate reliability on location effects on weekly rCFR. It is also to be noted that with the introduction of a random intercept, ‘vaccination’, ‘population density’, ‘GDP’, ‘weeks’ and ‘Stringency Index’ had significant negative effects on weekly rCFR, and ‘percentage of people aged ≥65 years’ had a significant positive effect.

Trend of global COVID-19 rCFR

The ARIMA and Prophet models found a strong declining trend in COVID-19 rCFR between observed and predicted global COVID-19 rCFR with R^2 , RMSE and MAE of 99.97% and 99.50%, 0.029 and 0.113, and 0.008 and 0.059, respectively (Table 3). The observed and predicted rCFR and observed and predicted excess mortality had fair agreement (Figure 4). In terms of accuracy, the ARIMA model performed better than the Prophet and SES models (with better R^2 , RMSE and MAE). The coefficient of determination of the ARIMA model was larger and errors were lower compared with the Prophet and SES models. According to the forecast in both models, the ratio of COVID-19 rCFR is expected to decrease considerably in the coming 10 days (Figure 1).

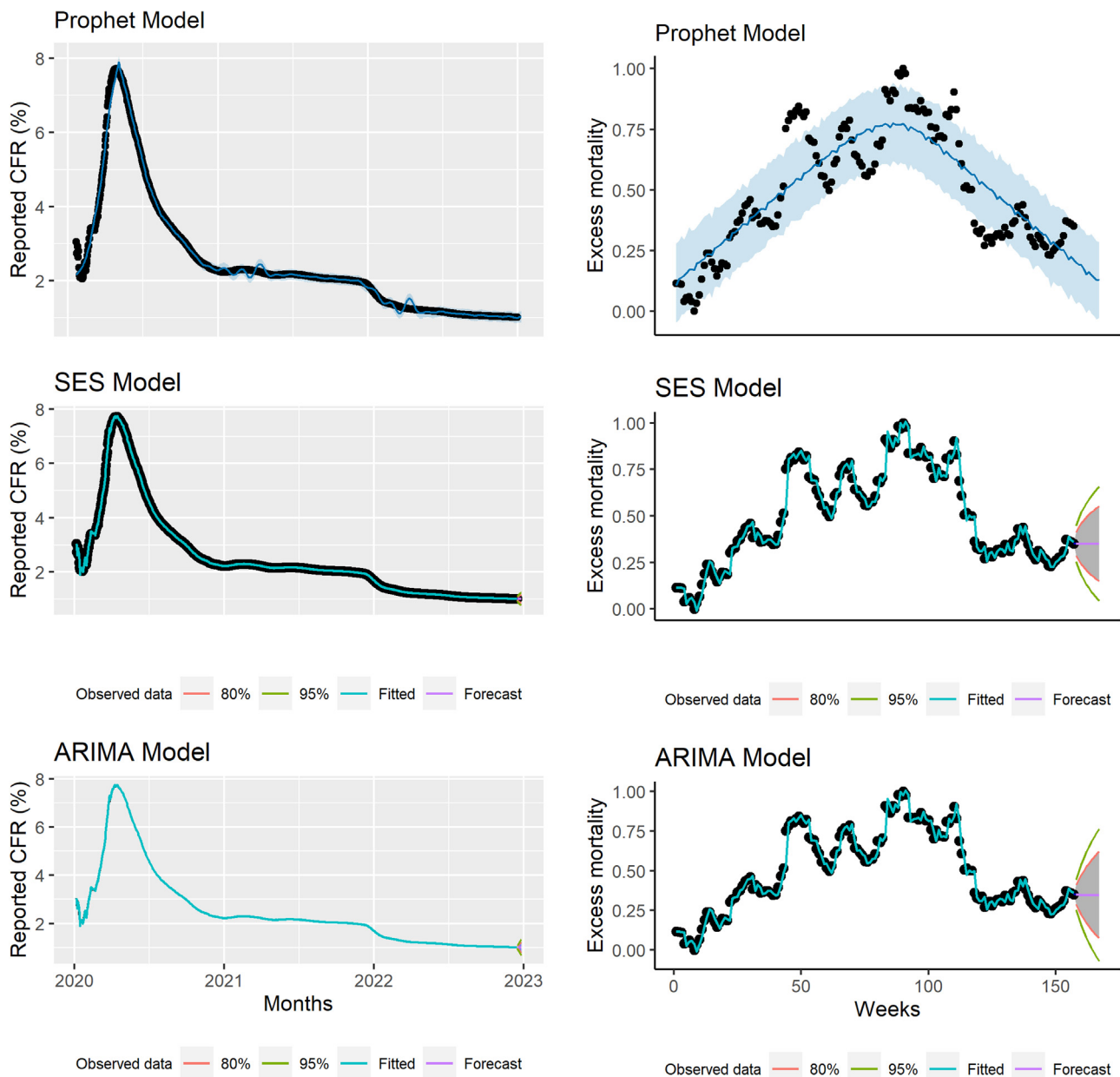


Figure 2. Top: Observed and predicted global daily reported case–fatality ratio (CFR) using the Simple Exponential Smoothing (SES) model. Middle: Observed and predicted daily worldwide daily cumulative reported CFR using the Auto-Regressive Integrated Moving Average (ARIMA) model. Bottom: Observed and predicted daily worldwide daily cumulative reported CFR using the Automatic Forecasting time-series model (Prophet model). Black dots indicate observed data, blue line indicates predicted CFR, and shaded area indicates the 95% confidence interval of predicted CFR.

Table 1

Reported number of vaccine doses administered/100 population and reported coronavirus disease 2019 (COVID-19) case–fatality ratio (rCFR) in the top 20 vaccinated countries and rest of the world between 5 January 2021 and 31 December 2022 (30 December 2022 for excess mortality).

	Top 20 vaccinated countries Mean ± SE	Rest of the world, including SSAMean ± SE	Global Mean ± SE	SSAMean ± SE
Vaccine doses/100 population (31 December 2022)	260.33 ± 9.35	152.12 ± 6.97	137.67 ± 6.87	51.21 ± 6.26
rCFR by 5 January 2021	1.84 ± 0.39	2.34 ± 0.24	2.27 ± 0.21	1.97 ± 0.19
rCFR by 31 December 2022	0.58 ± 0.12	1.72 ± 0.16	1.59 ± 0.14	1.82 ± 0.20
Decrease in rCFR (%)	69.31	26.50	29.96	7.61
P-value (for differences in rCFR between 5 January 2021 and 31 December 2022)	0.003	0.318	0.008	0.309
Excess mortality (deaths/100,000 population) by 4 January 2021	0.37 ± 0.12	0.40 ± 0.05	0.39 ± 0.04	0.28 ± 0.07
Excess mortality (deaths/100,000 population) by 30 December 2022	0.19 ± 0.03	0.15 ± 0.01	0.16 ± 0.01	0.11 ± 0.01
Decrease in excess mortality (%)	48.65	62.50	58.97	60.71
P-value (for differences in excess mortality between 4 January 2021 and 30 December 2022)	0.207	<0.001	<0.001	0.022

SSA, Sub-Saharan Africa.

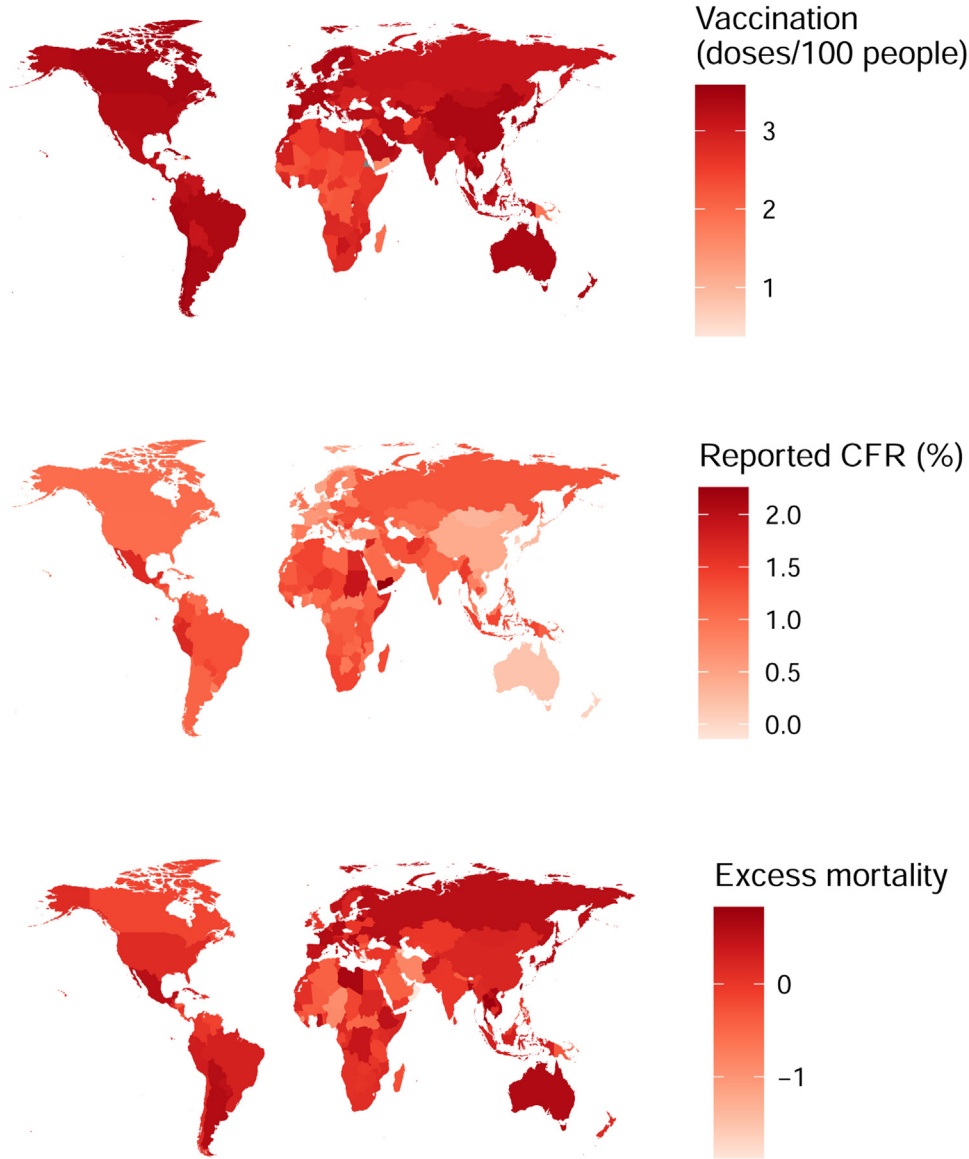


Figure 3. Coronavirus disease 2019 (COVID-19) vaccination rate (reported number of vaccine doses administered/100 population) and the reported case–fatality ratio (CFR) in different countries on 31 December 2022. Darker colour indicates higher vaccination rate or higher case–fatality ratio. An inverse correlation was found between COVID-19 vaccination rate and rCFR ($r=-0.363$, $P<0.001$) and excess mortality ($r=-0.321$, $P<0.001$).

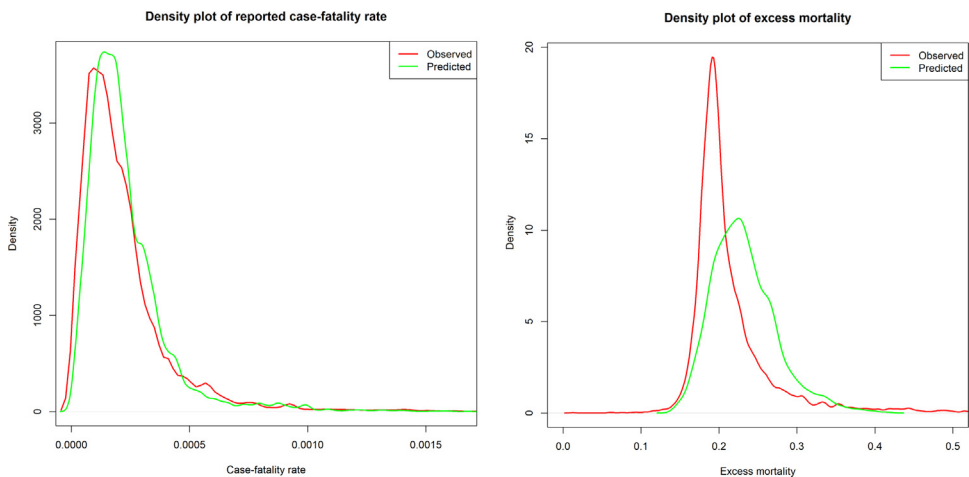


Figure 4. Density plot of observed reported case–fatality ratio (rCFR) and predicted rCFR of for coronavirus disease 2019 (left), and rCFR and excess mortality (right).

Table 2
Factors associated with reported coronavirus disease 2019 (COVID-19) case–fatality ratio and excess mortality in different counties using a generalized linear mixed model between 1 January 2020 and 31 December 2022.

Variables	Reported case–fatality ratio			Excess mortality		
	Odds ratio	95% confidence interval	P-value	Odds ratio	95% confidence interval	P-value
Vaccination	0.636	0.620–0.652	<0.001 ***	0.960	0.943–0.977	<0.001 ***
Percentage of people aged ≥65 years	1.189	1.020–1.387	0.027 *	1.164	1.117–1.212	<0.001 ***
Population density	0.878	0.652–1.182	0.390	0.994	0.918–1.076	0.877
COVID-19 tests/1000	0.849	0.829–0.868	<0.001 ***	1.013	1.002–1.023	0.015 **
GDP	0.787	0.682–0.908	<0.001 ***	0.923	0.889–0.959	<0.001 ***
GHSI	1.221	1.043–1.428	0.013 *	0.968	0.928 – 1.010	0.133
WGI	0.986	0.854–1.138	0.848	0.932	0.896–0.969	<0.001 ***
Obesity (%)	1.186	1.054–1.335	0.005 **	1.076	1.042–1.111	<0.001 ***
Stringency Index	0.880	0.867–0.893	<0.001 ***	1.132	1.118–1.145	<0.001 ***
Weeks	1.100	1.044–1.158	<0.001 ***	1.156	1.124–1.187	<0.001 ***
Group name	Variance	Standard deviation		Variance	Standard deviation	
Location (intercept)	0.3103	0.5571		0.01998	0.1414	
Weeks (intercept)	0.0478	0.2186		0.01055	0.1027	
Akaike information criterion		-174928.6			-30707.5	
Bayesian Information Criterion		-174826.5			-30605.3	
Root Mean Square Error		0.0001			0.062	
Conditional R ²		0.788			0.513	
Marginal R ²		0.333			0.217	
Intraclass correlation		0.682			0.378	

GDP, Gross Domestic Product; GHSI, Global Health Security Index; WGI, worldwide governance indicators.

Table 3
Summary of the Simple Exponential Smoothing (SES), Auto-Regressive Integrated Moving Average (ARIMA) and Automatic Forecasting Time Series (Prophet) models.

Method and period	Reported case–fatality ratio			Excess mortality		
	R ²	RMSE	MAE	R ²	RMSE	MAE
SES model						
Overall	99.94%	0.038	0.014	96.19%	0.049	0.034
ARIMA model						
Overall ARIMA	99.97%	0.029	0.008	96.41%	0.048	0.033
Prophet model						
Overall	99.50%	0.113	0.059	75.11%	0.126	0.102

RMSE, root mean square error; MAE, mean absolute error.
The SES, ARIMA and Prophet models used daily cumulative reported case-fatality ratio (rCFR) data.

Discussion

The global COVID-19 rCFR has been declining since May 2020, stabilizing or increasing slightly with the emergence of different variants of concern (VOCs), particularly the Delta variant [31,32]. Following the rollout of COVID-19 vaccines, rCFR started to decline, although the rates differed between the top 20 vaccination countries (69% decrease) and the rest of the world (27% decrease). In SSA, where the vaccine rollout has not yet reached a satisfactory level, COVID-19 rCFR only decreased by 8%. Excess mortality, on the other hand, decreased by 49% in the top 20 vaccinated countries, 62.5% in the rest of the world and 60.71% in Sub-Saharan Africa. Many factors affect the reduction of rCFR; however, the present results indicate that vaccination and the stringency of control measures influence the reduction in rCFR. A study on the global impact of COVID-19 vaccination showed that vaccination averted 14.4 million reported deaths (or 19.8 million excess deaths) due to COVID-19 in the first year of vaccination (8 December 2020–8 December 2021) [11]. This analysis complements previous findings showing a disproportionate decline in rCFR and excess mortality in countries with various vaccination coverage levels, indicating the importance of equitable distribution of COVID-19 vaccines.

This study found an overall decreasing trend of excess mortality in the postvaccination period. In SSA, in contrast to the negligible decline in rCFR, a marked decrease in excess mortality was noted. Excess mortality during the COVID-19 pandemic was affected by various factors, and not merely by transmission of COVID-19 and vaccination coverage. Some of these factors (e.g. shielding elderly people) may have even contributed to the reduction in excess mortality. The differential impact of these factors made the use of excess mortality an unpredictable estimator of the severity of COVID-19 [33]. This study did not compare excess mortality data at country level. Although differences in data and methodology preclude direct comparisons between the present results and those of the above studies, it should be noted that none of the top 20 countries for excess mortality were in SSA. Although it is beneficial to increase vaccination coverage where possible, this may not be the only reason why the mortality rate in SSA, where the majority of the population are aged <65 years, has decreased markedly since 2021. It is known that survival from COVID-19 is higher in younger age groups [6,34]. The positive association between Stringency Index and excess mortality is surprising and needs further study. An earlier study showed chaotic behaviour of COVID-19 data when compared with the Stringency Index [35], and a weaker relationship with the mortality rate [36]. Excess mortality decreased by 48.6% in the top 20 vaccinated countries, 62.5% in the rest of the world and 60.7% in SSA. Excess mortality showed a different pattern compared with COVID-19 rCFR. This may be because of differences in population age structures between high-income countries and the rest of the world including SSA, rather than the actual impact of lockdown-related control measures estimated in the Stringency Index; there is a need for a well-designed study to investigate this further.

The negative correlation between doses of COVID-19 vaccine given per 100 population, rCFR and excess mortality indicate the benefit of vaccines. Thus, the vaccine has been considered as a pathway out of this pandemic, but strong, innovative policies that ensure fast and equitable distribution are absent [11,12]. Vaccinating the world serves global interests of protecting each other’s health and economies [12]. The present analysis showed a large disparity in vaccine rollout between the top 20 vaccinated counties (260 doses/100 population) and low-income countries (e.g. 51 doses/100 population in SSA) by 31 December 2022. In high-income countries, the administration of a third or even fourth COVID-19 vaccine dose is ongoing [37], whereas >60%

of the population in SSA have not yet received a single dose (as of 31 December 2022).

COVID-19 vaccination, Stringency Index and GDP were found to be significantly associated with the reduction in COVID-19 rCFR. The main vaccines (mRNA or adenovirus vector) have been found to be highly effective in reducing hospital admissions and deaths, although some vaccines were not very effective at limiting infection [38]. Thus, the vaccine rollout helped high-income countries to reduce the burden of patients in hospitals rapidly, thus limiting the number of COVID-19 deaths. However, in the rest of the world, where vaccine rollout is still far from satisfactory (defined as 70–85% of people are fully vaccinated) [12], CFR has not declined markedly in comparison to the top 20 vaccinated countries. On the other hand, the results from different surveys suggest that natural immunity has reached a state where it is limiting spread and reducing the overall burden of the pandemic in many countries in SSA [39]. More than 28% of people in Brazzaville, Republic of Congo [40], 64.9% of blood donors in Malawi [41] and 74% of community residents in the Central African Republic have been found to have antibodies to SARS-CoV-2 [42]. The country's GDP is another indicator associated with a reduction in COVID-19 rCFR. Countries with higher national income deployed vaccines at a faster rate, which reduced local transmission and the rate of hospitalization, allowing these countries to concentrate on the vulnerable population; these factors acted synergistically to reduce the number of COVID-19-related deaths. Earlier studies have also identified these variables as risk factors for mortality/fatality ratio of COVID-19 [6,43,44].

Equitable distribution of COVID-19 vaccines is crucial to ending the pandemic [11,45]. The circulation of SARS-CoV-2 across the world among the large unvaccinated populations may allow the virus to mutate into a new VOC. Furthermore, many animal species are susceptible to SARS-CoV-2, including mink, primates, rodents, cats and dogs [46]. Several animal species have been linked with the emergence of SARS-CoV-2 VOCs, including dogs for the Alpha variant [47] and rodents for the Omicron variant [48]. Thus, it is important to reduce the circulation of SARS-CoV-2 in human and animal populations in order to avoid further epidemics caused by emergence of new VOCs. Equitable and faster vaccine rollout is key to reducing the circulation of SARS-CoV-2 across the world [11].

The model was adjusted for the number of tests/100 population in each country. Some countries do not report the daily testing number, while some countries share their test numbers irregularly. Testing is an important variable, and failure to adjust for it may result in the identification of spurious relationships. The denominator of rCFR (cases of COVID-19) is entirely predicated on the number of tests that a country has reported. As such, it is possible that the lower rCFRs in higher vaccination countries are simply reflective of greater testing capacity, and thus a larger denominator for the same number of deaths. Thus, only those countries that reported test data regularly were included in the analysis.

This study has several limitations. The main limitation is the dependence of the number of cases on the intensity of testing; as such, countries with low levels of testing missed fatal cases due to COVID-19. In countries where people undergo testing for travelling, working, moving, accessing health care etc., which tend to be higher-income countries where vaccine rollout was faster, large numbers of asymptomatic people are tested daily, which may result in the identification of large numbers of asymptomatic infections. These are then counted as COVID-19 cases, but these people are merely clinically ill. Thus, only some individuals in these countries are actually true cases, because a large proportion of positive cases are asymptomatic and are, therefore, infected. This may increase the denominator of the proportion artificially lowering the CFR. In contrast, it is likely that in SSA, the proportion of apparently healthy individuals who are tested is much lower, leading to apparently lower rCFRs in these countries. The associations reported in this study between COVID-19 rCFR/excess mortality and explanatory variables are statistical associations, and should not be interpreted as causal. Finally, differ-

ent VOCs of SARS-CoV-2 have different rCFRs, and the VOCs circulated at different times in different countries [32]; it was not possible to adjust for these factors in the analysis.

Conclusion

More than 260 doses of COVID-19 vaccines have been given per 100 population in the 20 countries with the highest vaccination rates, compared with 152 doses in the rest of the world and 51 doses in SSA as of 31 December 2022. Vaccination is negatively correlated with rCFR ($r=-0.36$) and excess mortality ($r=-0.32$), which is likely to reflect a contribution of vaccines to the reduction in COVID-19-related deaths. Excess mortality and COVID-19 rCFR have continued to decline since February 2021, although at a disproportionate rate between the top 20 vaccinated countries and the rest of the world. However, rCFR has decreased dramatically (69.3%) in the 20 countries with the highest vaccination rates (70%) and quite markedly in the rest of the world (30.0%), whereas it has only decreased by 7.6% in SSA. COVID-19 vaccination, Stringency Index and GDP were associated with a reduction in COVID-19 rCFR. Vaccine equity and faster rollout across the world is critically important to reduce COVID-19 transmission and CFR.

Conflict of interest statement

NH, JG, FN, OD, RA AZ and RK are part of the PANDORA-ID-NET Consortium (EDCTP Reg/Grant RIA2016E-1609) funded by the European and Developing Countries Clinical Trials Partnership (EDCTP2) programme, which is supported under Horizon 2020, the European Union's Framework Programme for Research and Innovation. NH, RA and JG are members of the International Development Research Centre, Canada's grant on West African One Health Actions for understanding, preventing and mitigating outbreaks (109810). AZ is a senior investigator at the National Institutes of Health Research.

Funding

None.

Ethical approval

This study does not include any individual-level data and thus did not require ethical approval.

Data availability

All data presented in this manuscript are publicly available on the 'Our World in Data', WHO or United Nations webpages. However, the corresponding author can be contacted regarding specific queries on the data sources.

Author contributions

NH and RK originally planned the study. MNH collected the data. NH and MNH, MJU analysed the data. NH prepared the first draft manuscript, and MNH, JG, RAK, DM, FN, OD, RA, MJU, AZ and RK reviewed the draft manuscripts. All authors approved the submission of the manuscript.

References

- [1] World Health Organization *Report of the WHO-China Joint Mission on Coronavirus Disease 2019 (COVID-19)*, Geneva: WHO; 2020. Available at [https://www.who.int/publications/i/item/report-of-the-who-china-joint-mission-on-coronavirus-disease-2019-\(covid-19\)](https://www.who.int/publications/i/item/report-of-the-who-china-joint-mission-on-coronavirus-disease-2019-(covid-19)) accessed 8 February 2023.
- [2] Ahammed T, Anjum A, Rahman MM, Haider N, Kock R, Uddin MJ. Estimation of novel coronavirus (COVID-19) reproduction number and case fatality rate: a systematic review and meta-analysis. *Heal Sci Reports* 2021;4:e274.

- [3] He W, Yi GY, Zhu Y. Estimation of the basic reproduction number, average incubation time, asymptomatic infection rate, and case fatality rate for COVID-19: meta-analysis and sensitivity analysis. *J Med Virol* 2020;**92**:2543–50.
- [4] Epidemiology Working Group for NCIP Epidemic Response Chinese Center for Disease Control and Prevention. The epidemiological characteristics of an outbreak of 2019 novel coronavirus diseases (COVID-19) in China. *Zhonghua Liu Xing Bing Xue Za Zhi* 2020;**41**:145–51.
- [5] Fu L, Wang B, Yuan T, Chen X, Ao Y, Fitzpatrick T, et al. Clinical characteristics of coronavirus disease 2019 (COVID-19) in China: a systematic review and meta-analysis. *J Infect* 2020;**80**:656–65.
- [6] Hasan MN, Haider N, Stigler FL, Khan RA, McCoy D, Zumla A, et al. The global case-fatality rate of COVID-19 has been declining since May 2020. *Am J Trop Med Hyg* 2021;**104**:2176–84.
- [7] Dagan N, Barda N, Kepten E, Miron O, Perchik S, Katz MA, et al. BNT162b2 mRNA COVID-19 vaccine in a nationwide mass vaccination setting. *N Engl J Med* 2021;**384**:1412–23.
- [8] Lopez Bernal J, Andrews N, Gower C, Robertson C, Stowe J, Tessier E, et al. Effectiveness of the Pfizer-BioNTech and Oxford-AstraZeneca vaccines on COVID-19 related symptoms, hospital admissions, and mortality in older adults in England: test negative case-control study. *BMJ* 2021;**373**:n1088.
- [9] Vasileliou E, Simpson CR, Shi T, Kerr S, Agrawal U, Akbari A, et al. Interim findings from first-dose mass COVID-19 vaccination roll-out and COVID-19 hospital admissions in Scotland: a national prospective cohort study. *Lancet* 2021;**397**:1646–57.
- [10] Murillo-Zamora E, Trujillo X, Huerta M, Riós-Silva M, Mendoza-Cano O. Effectiveness of BNT162b2 COVID-19 vaccine in preventing severe symptomatic infection among healthcare workers. *Medicina* 2021;**57**:746.
- [11] Watson OJ, Barnsley G, Toor J, Hogan AB, Winskill P, Ghani AC. Global impact of the first year of COVID-19 vaccination: a mathematical modelling study. *Lancet Infect Dis* 2022;**22**:1293–302.
- [12] Katz IT, Weintraub R, Bekker L-G, Brandt AM. From vaccine nationalism to vaccine equity — finding a path forward. *N Engl J Med* 2021;**384**:1281–3.
- [13] . Coronavirus cases. Worldometer; 2020. p. 1–22.
- [14] World Health Organization *Coronavirus disease (COVID-19) weekly epidemiological update and weekly operational update*, Geneva: WHO; 2022. Available at <https://www.who.int/emergencies/diseases/novel-coronavirus-2019/situation-reports> accessed 8 February 2023.
- [15] BBC News *COVID-19 vaccine: first person receives Pfizer jab in UK*. BBC News; 2020. Available at <https://www.bbc.com/news/uk-55227325> accessed 8 February 2023.
- [16] Checchi F, Roberts L. Interpreting and using mortality data in humanitarian emergencies. Humanitarian Practice Network. 2005. Available at: <https://odihpn.org/publication/interpreting-and-using-mortality-data-in-humanitarian-emergencies/> (accessed 8 February 2023).
- [17] World Health Organization *Global excess deaths associated with the COVID-19 pandemic*. Geneva: WHO; 2022.
- [18] Giattino C, Ritchie H, Roser M, Ortiz-Ospina E, Hassell J. Excess mortality during the coronavirus pandemic (COVID-19). 2020. Available at: <https://ourworldindata.org/excess-mortality-covid> (accessed 8 February 2023).
- [19] Our World in Data. COVID-19 data explorer. 2022. Available at: <https://ourworldindata.org/explorers/coronavirus-data-explorer?zoomToSelection=true&time=2020-03-01..latest&facet=none&pickerSort=asc&pickerMetric=location&Metric=Confirmed+cases&Interval=7-day+rolling+average&Relative+to+Population=true&Color+by+test+positivity=false&country=USA~GBR~CAN~DEU~ITA~IND>
- [20] World Bank *Population density (people per sq. km of land area)*, Washington, DC: World Bank; 2018. Available at https://data.worldbank.org/indicator/EN.POP.DNST?name_desc=false accessed 8 February 2023.
- [21] World Bank *Population ages 65 and above, total*, Washington, DC: World Bank; 2018. Available at https://data.worldbank.org/indicator/SP.POP.65UP.TO.ZS?name_desc=true accessed 8 February 2023.
- [22] World Bank *GDP (current US\$)*, Washington, DC: World Bank; 2018. Available at <https://data.worldbank.org/indicator/NY.GDP.MKTP.CD> accessed 8 February 2023.
- [23] World Bank *WGI 2019 interactive*, Washington, DC: World Bank; 2019. Available at <http://info.worldbank.org/governance/wgi/Home/Reports> accessed 8 February 2023.
- [24] Nuclear Threat Initiative. Global health security index. 2020. Available at: <https://www.nti.org/about/programs-projects/project/global-health-security-index/> (accessed 8 February 2023).
- [25] World Health Organization *Global health services data, obesity and overweight*. Geneva: WHO; 2020.
- [26] Our World in Data. COVID-19: Stringency Index. 2021. Available at: <https://ourworldindata.org/covid-stringency-index> (accessed 8 February 2023).
- [27] Oxford COVID-19 Government Response Tracker. Calculation and presentation of the Stringency Index 4.0. Oxford; 2020. Available at: [https://www.bsg.ox.ac.uk/sites/default/files/Calculation and presentation of the Stringency Index.pdf](https://www.bsg.ox.ac.uk/sites/default/files/Calculation%20and%20presentation%20of%20the%20Stringency%20Index.pdf) (accessed 8 February 2023).
- [28] Kourentzes N, Petropoulos F. Forecasting with multivariate temporal aggregation: the case of promotional modelling. *Int J Prod Econ* 2016;**181**:145–53.
- [29] Samur AA, Coskunfirat N, Saka O. Comparison of predictor approaches for longitudinal binary outcomes: application to anesthesiology data. *Peer J* 2014;**2**:e648.
- [30] R Core Team R: *a language and environment for statistical computing*. Vienna: R Foundation for Statistical Computing; 2020.
- [31] Zhao S, Lou J, Cao L, Chong KC, Zee BCY, Chan PKS, et al. Differences in the case fatality risks associated with SARS-CoV-2 Delta and non-Delta variants in relation to vaccine coverage: an early ecological study in the United Kingdom. *Infect Genet Evol* 2022;**97**:105162.
- [32] Liu J, Wei H, He D. Differences in case-fatality rate of emerging SARS-CoV-2 variants. *Publ Health Pract* 2023;**5**:100350.
- [33] Kelly G, Petti S, Noah N. COVID-19, non-COVID-19 and excess mortality rates not comparable across countries. *Epidemiol Infect* 2021;**149**:e176.
- [34] Kremer H-J, Thurner W. Age dependence in COVID-19 mortality in Germany. *Dtsch Arztebl Int* 2020;**117**:432–3.
- [35] Necesito IV, Velasco JMS, Jung J, Bae YH, Lee H, Kim SJ, et al. Understanding chaos in COVID-19 and its relationship to Stringency Index: applications to large-scale and granular level prediction models. *PLoS One* 2022;**17**:e0268023.
- [36] Violato C, Violato EM, Violato EM. Impact of the stringency of lockdown measures on COVID-19: a theoretical model of a pandemic. *PLoS One* 2021;**16**:e0258205.
- [37] Iacobucci G. Covid-19: Fourth vaccine doses – who needs them and why? *BMJ* 2022;**376**:o30.
- [38] Altarawneh H, Chemaitelly H, Tang P, MH R, Abu-Raddad LJ. Protection afforded by prior infection against SARS-CoV-2 reinfection with the Omicron variant. *N Engl J Med* 2022;**386**:1288–90.
- [39] Mukwege D, Byabene AK, Akonkwa EM, Dahma H, Dauby N, Cikwanine Buhendwa J-P, et al. High SARS-CoV-2 seroprevalence in healthcare workers in Bukavu, Eastern Democratic Republic of Congo. *Am J Trop Med Hyg* 2021;**104**:1526–30.
- [40] Lobaloba Ingoba L, Djontu JC, Mfoutou Mapangyu CC, Mouzinga F, Diafouka Kietela S, Vouvougui C, et al. Seroprevalence of anti-SARS-CoV-2 antibodies in a population living in Bomassa village, Republic of Congo. *IJID Regions* 2022;**2**:130–6. doi:10.1016/j.ijregi.2022.01.002.
- [41] Mandolo J, Msefula J, Henrion MYR, Brown C, Moyo B, Samon A, et al. SARS-CoV-2 exposure in Malawian blood donors: an analysis of seroprevalence and variant dynamics between January 2020 and July 2021. *BMC Med* 2021;**19**:303.
- [42] Manirakiza A, Malaka C, Yambiyo BM, Saint-Calver Diemer H, de Dieu Longo J, Namseni J, et al. Very high relative seroprevalence of anti-SARS-CoV-2 antibodies among communities in Bangui, Central African Republic. *Lancet*. https://papers.ssrn.com/sol3/papers.cfm?abstract_id=3951178
- [43] Haider N, Yavlinsky A, Chang Y-M, Hasan MN, Benfield C, Osman AY, et al. The Global Health Security index and Joint External Evaluation score for health preparedness are not correlated with countries' COVID-19 detection response time and mortality outcome. *Epidemiol Infect* 2020;**148**:e210.
- [44] Kim J, Hong K, Yum S, Gómez Gómez RE, Jang J, Park SH, et al. Factors associated with the difference between the incidence and case-fatality ratio of coronavirus disease 2019 by country. *Sci Rep* 2021;**11**:18938.
- [45] Michie S, Bullen C, Lazarus JV, Lavis JN, Thwaites J, Smith L, et al. *Global Citizen. Vaccine equity is crucial to end the COVID-19 pandemic – but it won't be enough* <https://www.globalcitizen.org/en/content/vaccine-equity-covid-19-variants/>.
- [46] Haider N, Rothman-Ostrow P, Osman AY, Arruda LB, Macfarlane-Berry L, Elton L, et al. COVID-19 – zoonosis or emerging infectious disease? *Front Public Health* 2020;**8**:596944.
- [47] Zhang J, Zhang Y, Kang J-Y, Chen S, He Y, Han B, et al. Potential transmission chains of variant B.1.1.7 and co-mutations of SARS-CoV-2. *Cell Discov* 2021;**7**:44.
- [48] Wei C, Shan K-J, Wang W, Zhang S, Huan Q, Qian W. Evidence for a mouse origin of the SARS-CoV-2 Omicron variant. *J Genet Genomics* 2021;**48**:1111–21.