



**Daffodil**  
*International*  
**University**

## **Machine Learning-Based Road Damage Detection: A Comprehensive Review and Comparative Analysis**

### **Submitted By**

MD. Ahhashanul Habbib Abir

ID:201-35-3006

Department of software Engineering (SWE)

Daffodil International University

### **Supervised By**

Mr. MD. Shohel Arman

Assistant Professor

Department of software Engineering (SWE)

Daffodil International University

A thesis submitted in partial fulfillment of the requirement for the degree of Bachelor of

Science in Software Engineering

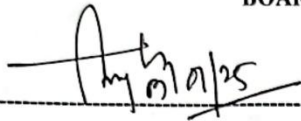
Fall 2024

©All right reserved by Daffodil International University

## APPROVAL

This thesis titled on "Machine Learning-Based Road Damage Detection: A Comprehensive Review and Comparative Analysis", submitted by Student Name MD Ahhashanul Habbib Abir (ID: 201-35-3006) to the Department of Software Engineering, Daffodil International University has been accepted as satisfactory for the partial fulfillment of the requirements for the degree of Bachelor of Science in Software Engineering and approval as to its style and contents.

### BOARD OF EXAMINERS



Professor Dr. Engr. AKM Masum  
Professor  
Department of Software Engineering  
Faculty of Science and Information Technology  
Daffodil International University

Chairman



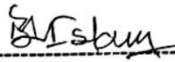
Md. Shohel Arman  
Assistant Professor  
Department of Software Engineering  
Faculty of Science and Information Technology  
Daffodil International University

Internal Examiner 1



Dr. Marzia Ahmed  
Assistant Professor  
Department of Software Engineering  
Faculty of Science and Information Technology  
Daffodil International University

Internal Examiner 2



Dr. Md. Monowarul Islam  
Associate Professor  
Department of Computer Science & Engineering  
Jagannath University

External Examiner

## DECLARATION

I hereby declare that this thesis report is done by me under the supervision of Md. Shohel Arman, Assistant Professor, Department of Software Engineering, Daffodil International University, in partial fulfillment of my original work. I am also declaring that neither this thesis nor any part therefore has been submitted elsewhere for the award of Bachelor or any degree.

Supervised By



---

Md. Shohel Arman  
Assistant Professor  
Department of Software Engineering Daffodil  
International University.

Submitted By



---

Md. Ahhashanul Habbib Abir  
ID: 201-35-3006  
Department of Software Engineering Daffodil  
International University.

## ACKNOWLEDGEMENT

I am very appreciative of Almighty God's heavenly presence and His many favors, which have made it possible for me to finish my final year thesis.

We would like to take this opportunity to thank **Md. Shohel Arman**, an enthusiastic assistant professor at the Daffodil International University, Dhaka, Department of Software Engineering, on behalf of the whole faculty. This study has been made possible in large part by our supervisor's deep knowledge and sincere interest in the topic of "Deep Learning". The complete completion of this project would not have been possible without their unfailing patience, academic direction, persistent encouragement, vigorous supervision, constructive criticism, invaluable counsel, rigorous evaluation of several versions, and painstaking corrections at every level.

My sincere gratitude goes out to **Dr. Imran Mahmud**, the head of the Software Engineering department, for his indispensable help in finishing our project. I express my gratitude to the whole teachers and staff of Daffodil International University's Software Engineering department.

Finally, I would want to convey my profound appreciation and regard for the unflinching.

## ABSTRACT

Finding road damage is essential to maintaining transportation safety, cutting maintenance expenses, and extending the life of infrastructure. Manual surveys and sensor-based systems, two traditional approaches to road damage assessment, are often labor-intensive, resource-intensive, and unsuitable for widespread use, especially in settings with limited resources. In this thesis, machine learning-based methods for detecting road damage are thoroughly reviewed and compared, with an emphasis on utilizing cutting-edge deep learning models, specifically YOLOv8 and its variations (YOLOv8n-seg, YOLOv8s-seg, YOLOv8m-seg, YOLOv8l-seg, and YOLOv8x-seg). Using picture datasets gathered from various contexts, the research investigates how well these models perform in identifying and categorizing different kinds of road damage, including cracks, potholes, and surface wear. To identify the best methods for practical applications, important factors including accuracy, computing efficiency, scalability, and cost-effectiveness are assessed. The findings show how sophisticated deep learning methods may be used to identify road degradation in a reliable, effective, and scalable manner, facilitating preventative maintenance plans and improving traffic safety. Limitations including dataset bias, processing needs, and environmental unpredictability are noted, despite the fact that the results show notable advancements in automated road damage identification. These difficulties highlight the need for more flexible and approachable solutions in future studies. By providing insights for scholars, decision-makers, and practitioners seeking to update road maintenance systems, this study advances the area of machine learning-based infrastructure management.

## TABLE OF CONTENT

<b>APROVAL</b>	<b>I</b>
<b>THESIS DECLARATION</b>	<b>II</b>
<b>ACKNOWLEDGMENT</b>	<b>III</b>
<b>ABSTRACT</b>	<b>IV</b>
<b>CHAPTER 1</b>	<b>1</b>
1.1 INTRODUCTION	1
1.2 BACKGROUND	2
1.3 MOTIVATION FOR THE RESEARCH	3
1.4 PROBLEM STATEMENT	4
1.5 RESEARCH QUESTIONS	4
1.6 RESEARCH OBJECTIVES	5
1.7 RESEARCH SCOPE	6
<b>CHAPTER 2</b>	<b>7</b>
2.1 INTRODUCTION	7
2.2 PREVIOUS LITERATURE	8
2.3 CONCLUSION	22
<b>CHAPTER 3</b>	<b>23</b>
3.1 INTRODUCTION	23
3.2 PROPOSED METHODOLOGY	23
3.3 DATA COLLECTION	24
3.4 DATA PREPROCESSING	25
3.5 YOLOv8	29
3.6 YOLOv8n-seg	31
3.7 YOLOv8s-seg	31
3.8 YOLOv8l-seg	32
3.9 YOLOv8x-seg	33
3.10 EVALUATION METHOD	34

<b>CHAPTER 4</b>	36
4.1 INTRODUCTION	36
4.2 MODEL PERFORMANCE	36
4.3 YOLOv8	37
<b>CHAPTER 5</b>	46
5.1 CONCLUSION	46
5.2 LIMITATIONS	47
5.3 REFERENCE	48

## List of Figures

Figure 1: Proposed Methodology Diagram	24
Figure 2: All type of road damage sample picture	25
Figure 3: Dataset preprocessing diagram	28
Figure 4: YOLOV8 architecture diagram	30
Figure 5: YOLOV8 Pre-trained model	37
Figure 6: Random Selection Of dataset image	38
Figure 7: Training and validation Loss trends	39
Figure 8: Bounding Box Loss learning curve	39
Figure 9: Classification loss Learning curve	40
Figure 10: distribution Focal loss Learning Curve	40
Figure 11: Segmentation Loss Learning Curve	41
Figure 12: The precision, recall, and F1 score	42
Figure 13: Precision-recall curves	42
Figure 14: Confusion matrix for our YOLOv8	44
Figure 15: Various metrics to assess	45
Figure 16: Validation set Inferences	45

# CHAPTER 1

## INTRODUCTION

### 1.1 INTRODUCTION

Road networks are essential for maintaining connection and mobility, and transportation infrastructure is the foundation of both social and economic development. However, since road deterioration like cracks, potholes, and surface wear are so common, maintaining road safety and efficiency continues to be very difficult. These flaws raise maintenance costs and provide significant safety hazards in addition to compromising driving enjoyment. In developing countries like Bangladesh, where the high death rate from road accidents highlights the urgent need for practical solutions, the urgency of tackling these problems is particularly evident. Manual inspections and sensor-based systems are two examples of traditional road damage detection techniques that are costly, time-consuming, and sometimes impracticable for general use in environments with limited resources. Automating the identification and categorization of road damage is made possible by revolutionary developments in computer vision and machine learning. Through the use of deep learning models such as YOLOv8, this research aims to overcome the shortcomings of current techniques by creating an accurate, scalable, and reasonably priced system for identifying road damage. In addition to adding to the corpus of knowledge in this area, the study hopes to provide useful insights and workable ideas for enhancing road upkeep and transportation safety on a worldwide scale.

## 1.2 BACKGROUND

The main transportation system is the city road network. There were several traffic accidents every day. According to a 2018 World Health Organization estimate, traffic accidents account for 67.5% of deaths in Bangladesh. With the extensive building of highways, the government and the general public are concerned about the safety of transportation networks. In addition to being uncomfortable, road damage—especially potholes or cracks—poses a safety concern. Repairing these issues on the roads is one of the most crucial responsibilities for road safety. To ensure road network safety, it is necessary to conduct routine inspections to identify any threats and hazards. Road illness identification is often the responsibility of seasoned professionals for practical application, and it is a very expensive and time-consuming procedure. We thus want a low-cost automated solution to detect damage to the roads. Numerous sensor-based automated systems are available to detect road deterioration; nevertheless, this procedure is expensive. The primary method for obtaining 3D road data is still laser scanning. In this research, we use image processing and a low-cost intelligence system to identify and classify road damage. Deep learning in computer vision has produced impressive outcomes and shown to be very useful in a variety of study domains in recent years. In this research, we employ YOLOv8 techniques for the identification and categorization of road damage objects. Earlier research on image processing for road damage identification used a different approach. For this study, we use YOLOv8n-seg, YOLOv8s-seg, YOLOv8m-seg, YOLOv8l-seg, YOLOv8x-seg and we examine which algorithm performs better at detecting road damage, and we examine which algorithm performs better at detecting road damage.

### **1.3 MOTIVATION OF THE RESEARCH**

Road damage is still a major problem that contributes to accidents, discomfort, and higher maintenance costs, despite the fact that maintaining safe and effective road networks is essential for social and economic progress. Addressing road safety issues is crucial in areas of Bangladesh, where the fatality rate from traffic accidents is very very high. Due to their high prices and resource requirements, traditional road damage detection techniques mostly depend on human inspections or costly technology like sensors and laser scanning, which are often out of reach for poor nations. Recent developments in computer vision and machine learning hold revolutionary promise for automating the identification of road damage. These technologies provide an efficient, scalable, and reasonably priced substitute for traditional methods. In order to make road maintenance accessible even in settings with limited resources, our study is driven by the need to close the gap between cost and technical innovation. This research intends to improve automated road damage identification and classification by using deep learning and it's a clever way to guarantee road sustainability and safety.

## **1.4 PROBLEM STATEMENT**

Road damage continues to be a major problem that affects comfort, safety, and maintenance expenses. The problem is much more urgent in nations like Bangladesh, where the number of deaths from traffic is startlingly high. In addition to being costly and time-consuming, traditional techniques for detecting road damage, such human inspections and sensor-based systems, are sometimes unworkable in environments with limited resources. Despite its accuracy, laser scanning is too expensive for broad application in underdeveloped countries. There is an urgent need for an effective, scalable, and reasonably priced way to identify and categorize road damage due to the rapid expansion of traffic networks. Many automated systems already in use are unable to adjust to a variety of contexts, and the issue is made worse by restricted access to cutting-edge equipment. Innovative strategies that make use of cutting-edge technology like computer vision and machine learning are needed to address these issues and provide workable and efficient solutions.

## **1.5 RESEARCH QUESTIONS**

Q1: Which cutting-edge machine learning methods are currently being used to identify road damage?

Q2: How well can various machine learning techniques identify and categorize different kinds of road degradation, such surface wear, cracks, and potholes?

## **1.6 RESEARCH OBJECTIVES**

This study's main goal is to investigate and assess the efficacy of machine learning-based techniques for detecting road degradation. This research specifically seeks to:

1. Perform a thorough analysis of current machine learning methods and how they are used to identify road degradation.
2. Create a framework that uses cutting-edge algorithms to categorize and examine various forms of road degradation, including cracks, potholes, and surface wear.
3. To determine the most effective and precise procedures, compare the performance of several machine learning strategies, such as conventional models and cutting-edge deep learning techniques like YOLOv8.
4. Examine the viability of putting in place an affordable, scalable system for detecting road deterioration, especially in environments with limited resources.
5. Describe how using machine learning-based solutions for preventative road repair might improve infrastructure management and transportation safety.

## **1.7 RESEARCH SCOPE**

This study's scope includes investigating, assessing, and contrasting machine learning-based methods for detecting road deterioration. The project intends to use cutting-edge machine learning methods to recognize and categorize road defects, such as cracks and potholes, in order to meet the urgent demand for automated, affordable remedies. This thesis offers a thorough grasp of the current trends and difficulties in this field by examining cutting-edge algorithms, datasets, and techniques. Given their shown efficacy in image-based object recognition tasks, special attention is given to the use of deep learning models. In order to facilitate scalable and useful implementations, the study also examines the trade-offs between accuracy, computing efficiency, and cost in current systems. This study's comparative analysis attempts to draw attention to the advantages and disadvantages of different strategies, offering researchers, decision-makers, and practitioners in the area of transportation infrastructure management useful information.

## **CHAPTER 2**

### **LITERATURE REVIEW**

#### **2.1 INTRODUCTION**

Because road damage has a significant influence on road safety, transportation efficiency, and infrastructure sustainability, its identification and management have been the subject of much research over the years. Even if human inspections and sensor-based technologies are accurate, they are resource-intensive and not scalable for large-scale road networks. This is the case with traditional techniques for detecting road deterioration. Road damage identification using image-based methods may now be automated thanks to recent developments in machine learning, especially deep learning. These techniques process and analyze road surface photos using potent algorithms like convolutional neural networks (CNNs), which allow for accurate damage type identification and classification. By emphasizing important approaches, datasets, and assessment criteria, this literature review seeks to provide a thorough examination of the body of research already conducted in this field. In order to determine the advantages and disadvantages of different machine learning approaches, the study also looks at comparative research. This lays the groundwork for the creation of more efficient and economical road damage detection systems.

## 2.2 PREVIOUS LITERATURE

A thorough examination of automated techniques for evaluating and tracking road surface conditions can be found in the 2024 review paper "Advancement in the Automation of Paved Roadways Performance Patrolling" by Muhammad Saiful Islam, Ahmed Mohamed Ibrahim, Kazi Ekramul Hoque, and Karama Abdullah Bakhuraisa. The efficiency of machine learning methods, namely Convolutional Neural Networks (CNNs) and Support Vector Machines (SVMs), in identifying and quantifying road surface damages (RSD) is emphasized by the authors. These techniques have shown to be more effective in detecting different kinds of irregularities in the road surface. The use of accessible gadgets like cellphones, cameras, and accelerometers for RSD detection is also covered in the paper. When combined with machine learning techniques, these technologies provide a scalable and affordable method of monitoring road conditions. The study also looks at the possibility of using machine learning technologies to identify RSD in server-based systems that receive photos. The efficiency of road maintenance activities is increased by this method's facilitation of centralized processing and analysis. The authors point out that sensor-based studies have not been as successful in identifying fractures in the road surface, indicating that further study and advancement in this field are necessary. Using the community of road users to take pictures for RSD detection is a new method that was covered in the review. This crowdsourcing method may greatly improve data gathering efforts by taking use of cellphones' broad availability. The study concludes by highlighting the developments in automated road performance patrols and stressing the contribution of accessible technology and machine learning to better road surface degradation identification and monitoring. It also points up areas that need further investigation to improve these automated systems' efficacy.[1]

A thorough examination of the developments in image processing, machine learning, and deep learning techniques applied to road surface condition assessments can be found in the 2023 review paper "A Review on Computer Vision and Machine Learning Techniques for Automated Road Surface Defect and Distress Detection" by Xuejing Chen, Sira Yongchareon, and Martin Knoche. The writers start out by stressing how crucial it is to keep up road infrastructure in order to guarantee transportation systems' efficiency and safety. They emphasize the necessity for automated solutions by pointing out that conventional road inspection techniques are often time-consuming, labor-intensive, and prone to human mistake. The study explores many computer vision-based methods used to identify damage to roads. It talks about how early image processing methods like edge detection and texture analysis gave way to more complex machine learning models like Support Vector Machines (SVMs) and Convolutional Neural Networks (CNNs). Road surface faults may now be precisely identified and classified thanks to these sophisticated models. The review's analysis of various datasets and data gathering techniques used in this field is one of its noteworthy features. The authors talk on the difficulties in gathering data, including different lighting conditions, the effects of weather, and the need for large, annotated datasets in order to develop reliable machine learning models. Additionally, they highlight openly accessible datasets that have significantly advanced this field's study. The study also compares several machine learning models and techniques that have been put out in the literature. It assesses how well they work, how scalable they are, and how applicable they are to actual situations. The scientists point out that while deep learning models—in particular, CNNs—have shown impressive results in identifying surface flaws in roads, there are still issues with computing demands and the necessity for large amounts of training data. The assessment ends by pointing up a number of issues that must be resolved in order to further develop automated road surface problem identification. These include establishing techniques that can function well in a variety of

challenging circumstances, increasing the efficiency of data collecting and annotation procedures, and strengthening the generalization abilities of models across various contexts. In conclusion, scholars and professionals working in the topic of automated road maintenance will find this study to be an invaluable resource. It provides a thorough synthesis of the methods, technologies, and difficulties of the present day, offering insights that might direct further study and the creation of automated systems for detecting defects in the road surface.[2]

A thorough review of current developments in artificial intelligence (AI) approaches used to the identification of road damages may be found in the 2023 article "Review of AI Based Techniques for Road Damage Detection" by Sakshi Dhaiphule, Nikhil Pawanikar, and R. Srivramangai. The authors stress how crucial it is to identify road damage as soon as possible in order to maintain infrastructure and ensure public safety. They emphasize the need for automated solutions by pointing out that conventional inspection techniques are often time-consuming and labor-intensive. Potholes, surface wear, longitudinal cracks, transverse cracks, and alligator cracks are among the several kinds of road damage that are categorized in the study. It is crucial to comprehend these categories in order to create AI models that are specifically designed to identify different kinds of harm. The authors address a number of machine learning and deep learning methods used in road damage identification in their assessment of AI models. The efficiency of Convolutional Neural Networks (CNNs) in image-based damage detection applications is especially noteworthy. For precise and effective identification, the study also cites research using object detection frameworks including Single Shot MultiBox Detector (SSD) and Faster R-CNN. The importance of varied datasets in building strong AI models is emphasized by the authors. They make reference to publicly accessible datasets, including those from the Global Road Damage Detection Challenge, which provide a range of road photos with damage annotations, making

it easier to create and compare AI models. The performance of AI models is evaluated via the discussion of evaluation metrics. Detection model accuracy and dependability are often assessed using metrics like precision, recall, F1-score, and mean Average Precision (mAP). The study also discusses the difficulties in detecting road deterioration using AI, such as the necessity for big, annotated datasets, fluctuations in weather and illumination, and variances in the materials used to make roads. These elements may have an impact on AI models' generalizability and performance. The authors conclude by outlining many possible avenues for future study, including the investigation of real-time detection systems, the creation of more generic models that can manage a variety of situations, and the integration of sensor data with image analysis. They stress that further developments in AI might greatly increase the effectiveness and precision of detecting road deterioration, resulting in better road safety and infrastructure upkeep. With its insights into existing approaches, difficulties, and potential future developments in the area, this article is an invaluable tool for scholars and professionals interested in using AI to road maintenance.[3]

A thorough summary of cutting-edge machine vision and machine learning methods used in pavement crack analysis can be found in the 2023 review paper "Machine Learning-Based Pavement Crack Detection, Classification, and Characterization: A Review" by Arselan Ashraf, A. Sophian, A. A. Shafie, T. S. Gunawan, and N. N. Ismail. The authors stress how crucial prompt and precise pavement crack identification is to preserving infrastructure integrity and traffic safety. The need for automated solutions is emphasized by pointing out that traditional human inspection techniques are sluggish, expensive, and dangerous for inspectors. The study explores many machine learning techniques that have been used for crack detection and classification, such as Support Vector Machines (SVM) and Neural Networks. It emphasizes the importance of feature extraction approaches in image processing, which are essential for precise crack detection. The authors also go over important

developments made possible by deep learning techniques, especially Convolutional Neural Networks (CNNs), which have shown excellent results in image-based crack detection applications. The review's analysis of the process flow in machine learning-based pavement crack detection systems is one of its noteworthy features. This covers the methods for collecting data and the use of different datasets that are necessary for creating reliable detection models. By contrasting various models and pointing out their benefits and drawbacks, the writers provide insightful analysis on the status of the subject today. Additionally, the study lists unresolved issues in the field of automated pavement crack analysis. The need for large, annotated datasets, the fluctuation in crack appearances brought on by environmental variables, and the processing requirements of sophisticated machine learning models are some of these difficulties. The authors conclude by recommending that in order to improve the efficacy and efficiency of automated pavement crack detection systems, future research should concentrate on resolving these issues. They stress that there is a great chance to transform pavement care procedures by combining machine vision and machine learning technology, which would increase road safety and save maintenance expenses. This study provides a thorough synthesis of current technologies, approaches, and problems in machine learning-based pavement crack identification and characterisation, making it an invaluable resource for academics and practitioners in the fields of civil engineering and infrastructure maintenance.[4]

Ankit, Gautam Yadav, Arya Kumar, and Neerja Negi's 2024 review article "Machine Learning Algorithms for Pothole Detection: A Review" offers a thorough analysis of many machine learning approaches used in road infrastructure pothole identification. The authors stress how crucial early pothole identification is to preserving road safety and lowering related expenses. The need for automated solutions is highlighted by the criticism of traditional manual inspection techniques, which are labor-intensive, time-consuming, and

prone to human mistake. In the context of pothole detection, the study classifies and assesses a number of machine learning techniques, such as ensemble approaches, support vector machines (SVMs), and convolutional neural networks (CNNs). Accuracy, precision, recall, and computing economy are used to evaluate each algorithm's performance. Because CNNs can automatically extract pertinent characteristics and build hierarchical representations, they are renowned for their efficacy in processing visual data, including photos of road surfaces. The authors cite research in which CNN-based systems performed pothole detecting tasks with excellent accuracy. SVMs are praised for their ability to identify road surface flaws and for their skill in managing structured data. Examples of effective pothole identification using SVMs in conjunction with characteristics taken from 3D point cloud data are included in the study. We also look at ensemble approaches, which mix many machine learning models to improve overall performance. In contrast to individual models, the authors point out that ensemble techniques may capture a wide variety of patterns linked to potholes, improving detection performance. The paper points out a number of difficulties facing the subject, such as the need for large, annotated datasets, the fluctuation of road conditions, and the computing requirements of sophisticated machine learning models. The authors recommend that future studies concentrate on creating pothole detecting systems that are more reliable, effective, and flexible. To sum up, this work is a useful tool for practitioners and scholars studying automated road maintenance. It gives advice for future research paths targeted at improving the efficacy of these systems and sheds light on the advantages and disadvantages of different machine learning algorithms used for pothole identification.[5]

The 2020 study by W. Cao, Qifan Liu, and Zhiqian titled "Review of Pavement Defect Detection Methods" He gives a thorough rundown of the techniques used to find fractures in road pavement, which is an essential part of maintaining infrastructure and ensuring traffic safety. Image processing, machine learning, and 3D imaging-based approaches are the three

main categories into which the authors divide the detection methods. The functions of conventional image processing techniques, including region expanding, edge detection, and threshold segmentation, in processing pictures to find crack characteristics are examined. These techniques use preset standards to identify irregularities in pavement photos. The study examines both contemporary deep learning techniques and more conventional machine learning systems, such as neural networks and support vector machines, which rely on manually created features taken from image processing methods. By automating feature extraction and increasing detection accuracy, deep learning—in particular, convolutional neural networks, or CNNs—has revolutionized crack detection. By contrasting three different 3D data formats and assessing how well they function in deep neural networks for object recognition, the paper emphasizes the rise of 3D data in pavement defect detection. The authors talk about how 3D imaging improves pavement fault identification and characterization by providing comprehensive surface information. The difficulties of each approach are also discussed in the research, such as the required for huge datasets, the processing demands, and the difficulty of precisely identifying fractures in a variety of environmental circumstances. The authors conclude by recommending that future studies concentrate on combining these techniques to create pavement fault detection systems that are more reliable and effective. They highlight how merging 3D imaging, machine learning, and image processing approaches may improve operating efficiency and detection accuracy. By providing information on the advantages and disadvantages of the existing pavement defect detection techniques and directing future advancements in the field, this study is an invaluable tool for scholars and professionals working in the subject of road maintenance and safety.[6]

A thorough analysis of machine learning (ML) approaches used for pothole detection is given in the 2024 paper "A Literature Survey on Spotting Potholes Using ML" by Vishwas

SS, Vachan Dev BM, and Prof. Manjula BS. It highlights the importance of maintaining road infrastructure for vehicle safety and effective transportation. Various Methods: The authors examine a number of approaches, such as image-based approaches using Convolutional Neural Networks (CNNs) and sensor-based approaches using accelerometers and gyroscopes. This variety, which blends aspects of machine learning, signal processing, and computer vision, underlines the field's multidisciplinary character. Developments in Detection Techniques: According to the report, pothole detection techniques have evolved over time, with a move toward automated, machine learning-driven solutions that provide more accuracy and efficiency than conventional human inspections. Evaluation of Techniques: The study offers insights into the usefulness of each approach under various settings, such as differing road surfaces and illumination, by objectively examining its advantages and disadvantages. Future Research Directions: The authors identify current challenges, including the need for large, annotated datasets and the integration of multiple data sources, suggesting areas for future exploration to enhance the effectiveness of ML-based pothole detection systems. This survey provides a comprehensive grasp of the state-of-the-art and possible directions for future developments in this crucial area of infrastructure maintenance, making it an invaluable tool for researchers and practitioners looking to create or enhance automated pothole detection systems.[7]

The integration of multiple sensors and Internet of Things (IoT) technologies for road condition defect detection is thoroughly covered in the 2023 review paper "Detection of Road Condition Defects Using Multiple Sensors and IoT Technology: A Review" by A. Alrajhi, K. Roy, L. Qingge, and J. Kribs. The authors go on how to get detailed information on road conditions using a variety of sensors, including as cameras, gyroscopes, accelerometers, and LiDAR. The accuracy and dependability of defect detection systems are improved by the combination of data from these sensors. The importance of IoT in facilitating real-time data

transfer and monitoring is emphasized in the study. Road condition data may be continuously collected and analyzed thanks to IoT devices, which enables prompt maintenance actions. Techniques for handling and evaluating the massive volumes of data produced by sensor networks are covered in the study. Methods like machine learning algorithms are emphasized because of how well they can spot trends that point to road flaws. The authors list many obstacles to putting these technologies into practice, such as the difficulty of integrating data, the need for defined protocols, and the high expense of setting up large sensor networks. In order to better identify and categorize road issues, the article makes recommendations for future research in areas including increasing sensor accuracy, creating affordable solutions, and improving data processing algorithms. By providing information on the status of sensor and Internet of Things technologies for road condition monitoring and pointing out possible directions for future development, this study is an invaluable tool for scholars and professionals working in the area of intelligent transportation systems.[8]

A thorough examination of the use of machine learning (ML) methods in creating crash prediction models (CPMs) may be found in the 2020 publication "Machine Learning Applied to Road Safety Modeling: A Systematic Literature Review" by P. B. Silva, Michelle Andrade, and Sara Ferreira. To find papers that used ML techniques for CPM creation, the authors carried out a thorough literature survey. The many ML algorithms, data sources, and performance indicators used in these investigations were all included in their study. Neural networks are the most often utilized machine learning technology in CPMs, according to the study. Additional techniques, including ensemble learning, support vector machines, and decision trees, have also been used; each has unique benefits for simulating intricate traffic patterns. Numerous data sources, such as past collision data, traffic volume, road features, and environmental variables, were used in the examined investigations. It was shown that combining different kinds of data improved ML models' capacity for prediction. In terms of

predicted accuracy, the authors found that ML-based CPMs often perform better than conventional statistical models. Nonetheless, issues including interpretability, overfitting, and the need for big datasets were noted as needing further investigation. According to the report, future studies should concentrate on enhancing ML models' interpretability, including real-time data for dynamic predictions, and resolving data quality concerns to increase model dependability. With its insights into the present status of ML applications in CPMs and its identification of possible directions for future development, this study is an invaluable tool for road safety academics and practitioners.[9]

Kai-yang Liao's 2022 article "Road Damage Intelligent Detection with Deep Learning Techniques" offers a thorough analysis of current developments in object identification algorithms, with an emphasis on how they are used in road damage detection. One-stage and two-stage detectors are the two primary categories into which the study divides object detection methods. One-stage detectors, such as SSD (Single Shot MultiBox Detector) and YOLO (You Only Look Once), carry out object categorization and localization in a single phase, providing quicker processing appropriate for real-time applications. Higher accuracy is achieved at the expense of longer calculation times using two-stage detectors, such as Faster R-CNN, which first create area recommendations before classifying them. Liao talks about how these algorithms have been modified to identify other kinds of road degradation, such as surface wear, fractures, and potholes. The research demonstrates how well deep learning models can detect and categorize road imperfections, which is essential for prompt repair and maintaining traffic safety. Because YOLO and SSD strike a compromise between speed and accuracy, the author suggests using them for road damage detection tasks. These models are especially useful in situations that call for real-time analysis and detection. The need of large annotated datasets, environmental heterogeneity, and the computing resources needed for deep learning model training are some of the difficulties that are acknowledged in the

research. To further the subject of automated road damage identification, Liao recommends that future studies concentrate on enhancing model resilience, providing uniform datasets, and designing effective training techniques. With its insights into the present status of deep learning applications for road maintenance and its identification of possible research directions, this study is an invaluable tool for scholars and practitioners working in the area of intelligent transportation systems.[10]

A thorough review of the most recent advancements in applying deep learning techniques to road analysis is given in the 2024 paper "A Review of Deep Learning Advancements in Road Analysis for Autonomous Driving" by Adrian-Paul Botezatu, Adrian Burlacu, and Ciprian Orhei. It focuses on two important areas: Road Damage Detection (RDD) and Road Surface Classification (RSC). In particular, one-stage detectors like YOLO (You Only Look Once) and SSD (Single Shot MultiBox Detector) and two-stage detectors like Faster R-CNN are among the deep learning techniques that the authors analyze. The ability of these algorithms to detect road damage, such as cracks and potholes, in a variety of scenarios is assessed. The paper emphasizes how these models provide a balance between real-time processing power and detection accuracy. The study investigates deep learning methods for categorizing various road conditions (such as dry, wet, and snowy) and surfaces (such as asphalt, concrete, and gravel). For autonomous cars to adjust their driving tactics to changing road conditions and improve performance and safety, accurate categorization is crucial. The authors list a number of difficulties facing the discipline, such as the need for large, annotated datasets, environmental variation, and the processing requirements of deep learning models. To further the subject of automated road analysis, they recommend that future studies concentrate on enhancing model resilience, providing uniform datasets, and devising effective training techniques. With its insights into the present status of deep learning applications for road analysis and its identification of possible directions for future development, this study is an

invaluable tool for academics and practitioners working in the area of autonomous driving.[11]

Nima Sholevar, Amir Golroo, and Sahand Roghani Esfahani's 2022 article "Machine Learning Techniques for Pavement Condition Evaluation" offers a thorough analysis of cutting-edge machine learning (ML) techniques used in pavement condition assessment. The authors thoroughly investigate a range of machine learning algorithms used to evaluate pavement conditions, emphasizing how well they identify and categorize pavement distresses such as cracks, potholes, and surface deformations. The authors are renowned for their capacity to simulate intricate patterns in data on pavement deterioration. They are acknowledged for their proficiency in pavement condition classification assignments. The authors are praised for their resilience and interpretability while working with a variety of datasets. The research highlights the value of high-quality data while going over a variety of data gathering strategies, including physical inspections, sensor data, and imaging techniques. It also emphasizes how important feature selection is for improving model performance. By taking into account criteria like accuracy, precision, recall, and computing efficiency, the authors evaluate the performance of various machine learning models. They go over the trade-offs between interpretability and model complexity, offering guidance on how to choose the best models for certain uses. The need for large, annotated datasets, environmental unpredictability, and the processing requirements of machine learning models are some of the difficulties the discipline faces, according to the report. To further the area of automated pavement condition assessment, the authors recommend that future studies concentrate on enhancing model robustness, providing consistent datasets, and designing effective training techniques. With its insights into the status of ML applications for pavement condition assessment now and its possible directions for future development, this study is a useful tool for academics and practitioners in the fields of civil engineering and infrastructure management.[12]

W. Cao, Qifan Liu, and Zhiqian's 2020 publication "Review of Pavement Defect Detection Methods" He gives a succinct summary of methods for identifying flaws in pavement. The authors examine conventional techniques like sensor-based procedures and human inspections and contrast them with more recent, automated alternatives like computer vision and machine learning. Although they are dependable, manual checks and vibration-based sensors are expensive and time-consuming. When it comes to identifying and categorizing flaws like cracks and potholes, advanced deep learning techniques like convolutional neural networks (CNNs) provide exceptional accuracy and efficiency. Computational needs, diverse environmental conditions, and high-quality information continue to be major challenges. The need for more reliable, real-time systems that include sensor data and sophisticated AI models is emphasized in the article. Understanding the development of pavement fault detection techniques and spotting trends in AI-driven road maintenance solutions are made easier with the help of this review.[13]

A thorough analysis of contemporary technology employed in pavement monitoring may be found in the 2020 publication "The State-of-the-Art Review on Applications of Intrusive Sensing, Image Processing Techniques, and Machine Learning Methods in Pavement Monitoring and Analysis" by Yue Hou et al. Intrusive Sensing: Explores sensor-based methods like strain gauges and accelerometers for detecting pavement stress and deformation. These techniques are expensive and intrusive, despite their effectiveness. discusses developments in computer vision, emphasizing how they can more accurately and efficiently detect and categorize surface flaws like cracks and potholes than conventional techniques. highlights how machine learning—in particular, convolutional neural networks, or CNNs—is becoming more and more important in automating the study and identification of pavement defects while providing increased scalability and accuracy. identifies drawbacks, including the need for big, superior datasets, computing complexity, and environmental condition

flexibility. proposes using machine learning and a variety of sensor techniques to create accurate, affordable, and real-time pavement monitoring systems. For academics and practitioners looking to use cutting-edge technology for effective pavement analysis and management, this article offers a thorough guidance.[14]

The revolutionary significance of deep learning in automating pavement distress identification is highlighted in the 2018 study "Deep Learning in Data-Driven Pavement Image Analysis and Automated Distress Detection: A Review" by K. Gopalakrishnan. explains how convolutional neural networks (CNNs) are a popular method for examining pavement photos and spotting flaws including surface wear, fractures, and potholes. demonstrates how deep learning outperforms conventional image processing methods in managing intricate patterns and huge datasets. identifies challenges include the need for large labeled datasets, high computing costs, and the impact of ambient and illumination variations on model performance. recommends using multi-modal data integration, data augmentation, and transfer learning to improve the scalability and resilience of deep learning models in practical applications. This work highlights the promise and constraints of deep learning approaches and provides a basic overview for academics investigating AI-driven pavement maintenance solutions.[15]

## 2.3 CONCLUSION

Significant progress in road damage identification has been made thanks to machine learning and computer vision methods, according to a thorough review of the literature. Even though they work well in certain situations, traditional approaches are often hindered by their high prices, resource requirements, and scalability issues, especially in settings with limited resources. Automating and increasing the accuracy of road damage diagnosis has been made possible by the incorporation of machine learning, especially deep learning frameworks like convolutional neural networks (CNNs) and object recognition models like YOLO. Although earlier research shows the promise of these cutting-edge methods, it also emphasizes the need for stronger frameworks that tackle issues like computer efficiency, environmental adaptability, and dataset variability. It is also challenging to identify the best solutions across a variety of circumstances due to a lack of defined assessment measures, as shown by comparative evaluations of algorithms.

# CHAPTER 3

## REASEARCH METHODOLOGY

### 3.1 INTRODUCTION

For my study, I used the YOLOv8n-seg, YOLOv8s-seg, YOLOv8m-seg, YOLOv8l-seg, YOLOv8x-seg model on a dataset that we acquired.

### 3.2 PROPOSED METHODOLOGY

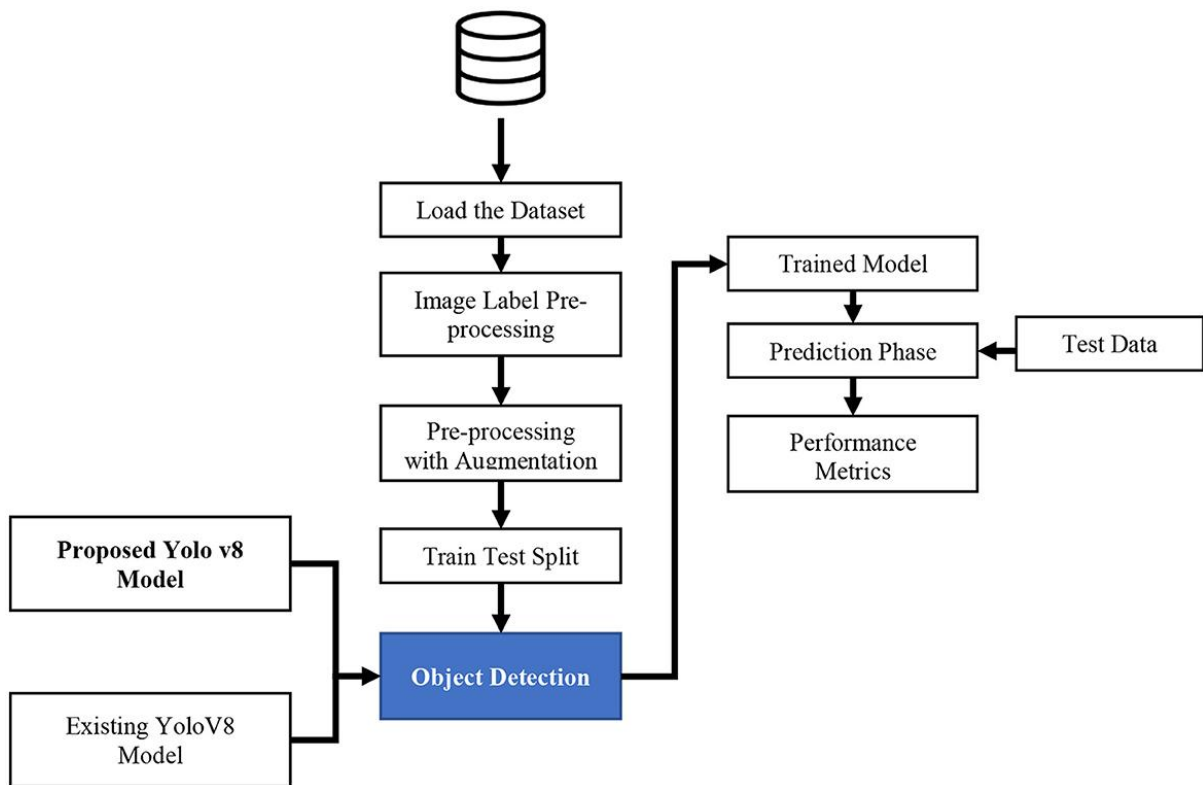
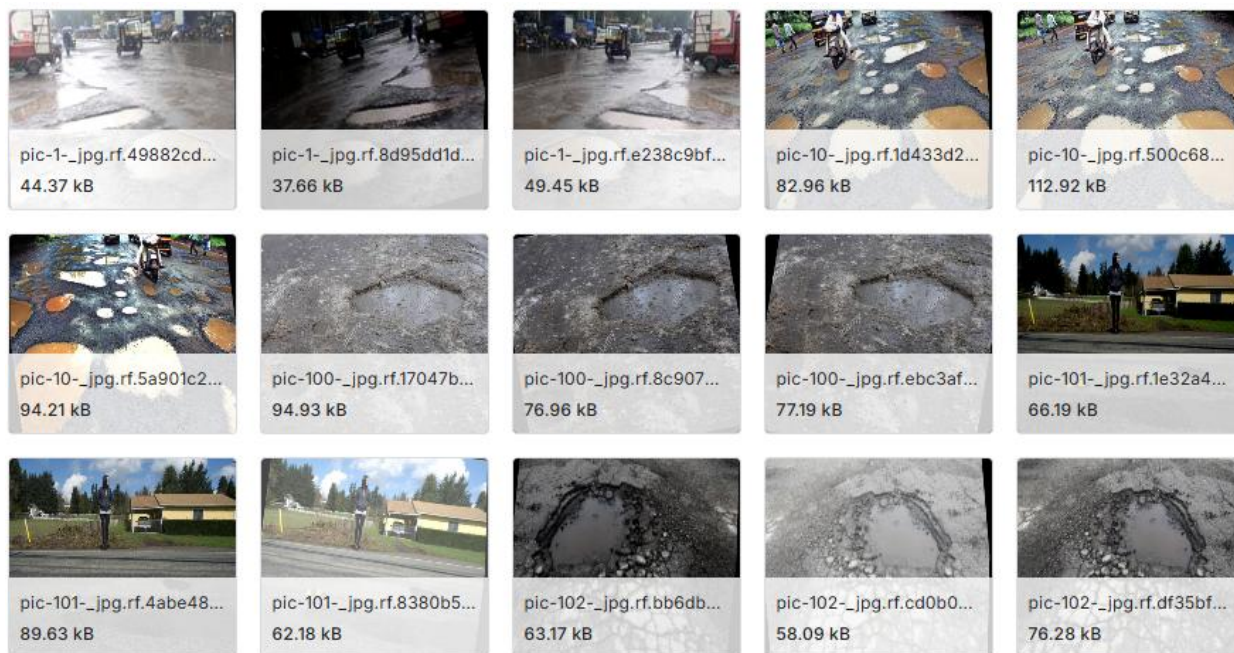


Figure 1: Proposed Methodology Diagram

### 3.3 DATA COLLECTION

The quality and variety of the training and assessment data form the basis of every deep learning-based system. Obtaining thorough road damage datasets including a broad variety of flaws, such as cracks, potholes, and surface wear, under varied environmental and geographic circumstances was the main goal of data collecting for this work. To guarantee a variety of representations of road damage situations, publicly accessible datasets including the GDXray, Japan Road Damage Dataset (JRDD), and CRACK500 were used. These databases include precise labels and annotated photos that classify various forms of road damage. In order to improve the dataset and replicate real-world circumstances, data augmentation methods such as rotation, scaling, and contrast modifications were also used. Additional data were gathered via fieldwork as needed, using high-resolution cameras installed on cars to take pictures in real time. This measure made sure that road damage types that may not be well covered in publicly accessible datasets—especially those that are regionally distinctive, like Bangladesh—were included. The data's geographic variety guarantees the suggested system's resilience to changes in surface conditions, illumination, and weather. To guarantee uniformity in picture size, format, and resolution, the gathered datasets underwent preprocessing. To improve the dependability of the training and assessment procedure, preprocessing also included cleaning the data to exclude low-quality or unnecessary photos. The foundation of the machine learning models used in this work is this extensive and well selected dataset, which makes precise road damage identification and categorization possible.



**Figure 2:** All type of road damage sample picture

### 3.4 DATA PREPROCESSING

In order to ensure consistency, quality, and relevance, data preparation is an essential step in getting the dataset ready for machine learning models. Several preprocessing steps were performed on the gathered road damage data for this research in order to prepare it for deep learning algorithms such as YOLOv8.

**Data Cleaning:** To preserve the dataset's quality, irrelevant, hazy, or low-resolution photos were eliminated. To prevent duplication and guarantee the objectivity of the training and assessment procedures, duplicate pictures were found and eliminated.

**picture Normalization and Resizing:** Every picture was shrunk to a consistent resolution appropriate for the YOLOv8 models' input specifications. To increase computational efficiency and guarantee quicker convergence during training, pixel intensity values were standardized.

**Data Augmentation:** Techniques including flipping, rotation, scaling, cropping, and contrast modifications were used to increase dataset variety and boost model resilience. These changes increase the model's adaptability by simulating real-world circumstances like changing illumination and viewpoints.

**Label Encoding:** To make the dataset's annotations compatible with YOLOv8 models, bounding boxes and class labels for the various forms of road damage (such as cracks, potholes, and surface wear) were transformed. During the training phase, this process guarantees accurate object recognition and categorization.

**Dataset Splitting:** Usually in a 70:20:10 ratio, the processed dataset was separated into training, validation, and testing sets. This division guarantees that most of the data is used to train the model, while a subset is set aside for objective assessment and optimization.

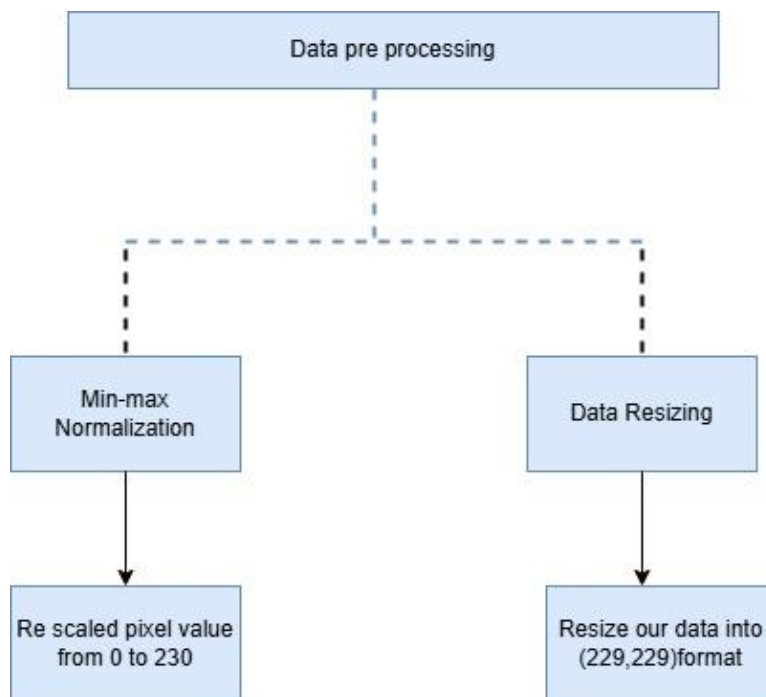
**Noise Reduction:** To avoid providing inaccurate inputs for model training, images containing a lot of noise or distortion—such as those impacted by harsh weather or shadows—were examined and filtered.

### 3.4.1 Data Normalization:

I have used min-max normalization for re scaling the value. So, using the method I have re-scaled the pixel value from 0 to 230 (figure 1).

### 3.4.2 Data resizing:

For get a better result data re-sizing is one of the biggest tasks in image processing. I have resized the dataset into (229, 229) format (figure 1).



**Figure 3:** Dataset preprocessing diagram

### 3.5 YOLOv8

A cutting-edge framework for object identification and segmentation, the YOLOv8 (You Only Look Once version 8) model is renowned for its remarkable speed and accuracy. It introduces major improvements in performance, efficiency, and flexibility while building on the virtues of its predecessors. Because YOLOv8 can handle a variety of complicated datasets in real time, it is especially well-suited for road damage detection jobs. The segmentation models of YOLOv8—YOLOv8n-seg, YOLOv8s-seg, YOLOv8m-seg, YOLOv8l-seg, and YOLOv8x-seg—were used in this work to detect and categorize different kinds of road damage, such as cracks, potholes, and surface wear. By providing trade-offs between size, speed, and accuracy, these YOLOv8 model variants allow users to choose the model that best suits their needs.

Important YOLOv8 characteristics used in this study include:

**Advanced Backbone Architecture:** YOLOv8 has a better backbone network for feature extraction, which enables the model to accurately identify road damage even in difficult situations like dim illumination or occlusion.

**Unified Task Handling:** The model can create accurate object boundaries and classify damage kinds in a single pipeline by smoothly combining detection, classification, and segmentation operations.

**Scalability and Customization:** Due to its high degree of modularity, the YOLOv8 framework may be tailored to meet the needs of certain datasets and computing power. This is especially advantageous for implementing scalable solutions in settings with limited resources.

**Real-Time Performance:** During on-the-fly inspections, real-time road damage identification is made possible by YOLOv8's improved architecture, which guarantees quick inference.

**Training Improvements:** To maximize model performance and cut down on training time, features including automated hyperparameter adjustment and mixed-precision training were used.

To find the best model for detecting road damage, every YOLOv8 variation was assessed in this study. Their efficacy was compared using performance parameters including recall,

accuracy, precision, and inference time. The outcomes of these tests provide important new information on the potential and constraints of YOLOv8 for automated road damage classification and detection.

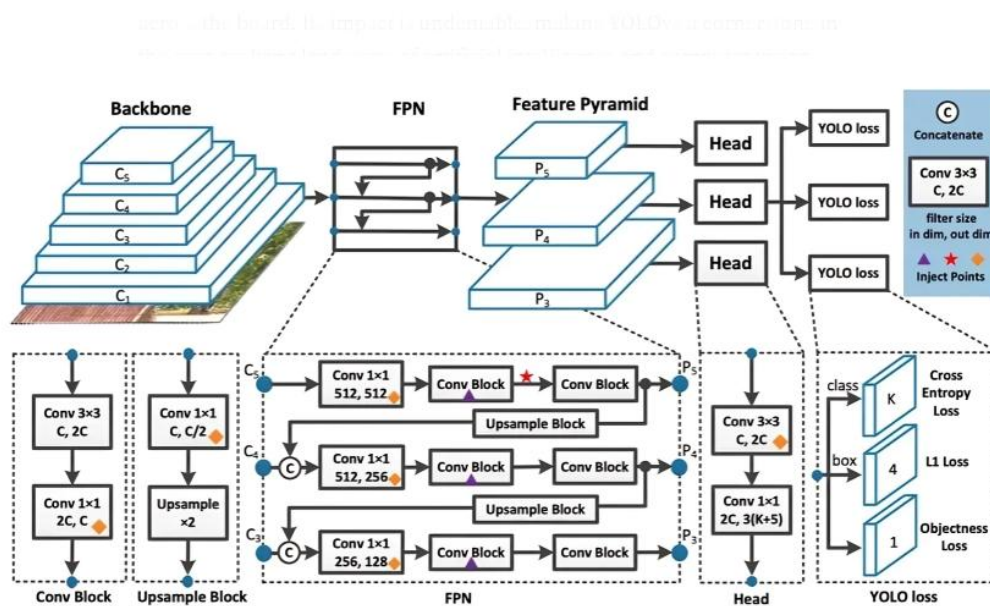


Figure 4: YOLOV8 architecture diagram.

On the other hand, two-shot or multi-shot object detection algorithms identify objects in two steps. Proposing a number of bounding boxes that could include an item is the initial stage. The technique known as region proposal is often used for this. To categorize the item classes within the box, the second step is passing these suggested areas through a convolutional neural network. R-CNN (Regions with CNN features), Fast R-CNN, and Faster R-CNN are a few instances of two-shot object identification methods. These techniques categorize the suggested areas using CNNs after proposing possible bounding boxes using region proposal networks (RPNs). There are advantages and disadvantages to both single-shot and two-shot detectors. Single-shot detectors are appropriate for real-time object identification jobs since they are often quicker and more effective. Because two-shot detectors can afford to invest

more computing resources in each possible item, they are often more accurate while being slower and requiring more processing power.

### **3.6 YOLOv8n-seg**

The "nano" version of the YOLOv8 segmentation family, YOLOv8n-seg, is intended to provide effective and portable object identification and segmentation. It works best in settings with limited processing power, such as embedded systems or mobile devices. Road damage detection and other real-time applications may benefit from YOLOv8n-seg's impressive performance in object identification and segmentation, despite its modest size. YOLOv8n-seg is used in this study to identify and categorize several kinds of road damage, such as surface wear, cracks, and potholes. Faster inference without the need for expensive hardware is made possible by the model's lightweight design, which is especially advantageous for environments with limited resources or real-time monitoring systems. However, compared to bigger versions in the YOLOv8 family, its accuracy is somewhat lower as a trade-off for speed and economy. The training procedure uses transfer learning to improve YOLOv8n-seg's detection skills by fine-tuning it using annotated road damage datasets. The use of YOLOv8n-seg in this work demonstrates the possibility of implementing scalable, low-cost automated road damage detection methods, making it a viable option for broad deployment in resource-constrained settings while preserving adequate detection performance.

### **3.7 YOLOv8s-seg**

YOLOv8s-seg, the "small" variant of the YOLOv8 segmentation family, strikes a compromise between processing efficiency and detection accuracy. It is designed to use relatively little processing resources and perform better than YOLOv8n-seg. For applications such as standard computer systems or tiny edge devices with limited hardware capabilities,

this makes it perfect. In this study, YOLOv8s-seg is utilized to detect and classify several types of road damage, including surface deformations, fractures, and potholes. By using its enhanced feature extraction capabilities over the nano version, YOLOv8s-seg increases accuracy in identifying complicated and tiny damage patterns on road surfaces. Its segmentation capabilities enable the precise identification of damaged sections for in-depth investigation and valuable insights. The model is honed using a dataset that has been specifically annotated with road damage types to make sure it is well-suited to the unique challenges given by different road conditions and damage patterns. Because it provides a practical solution for real-world scenarios requiring a balance between speed and accuracy, YOLOv8s-seg is an excellent choice for governments and enterprises wishing to create economical automated road inspection systems. Through its use in this research, YOLOv8s-seg demonstrates how modern machine learning techniques may be utilized to improve the scalability and effectiveness of road repair operations.

### **3.8 YOLOv8l-seg**

The "large" version of the YOLOv8 segmentation models, YOLOv8l-seg, is intended to provide more precise and comprehensive segmentation capabilities. This model can extract and evaluate intricate information from input photos since it integrates a broader network architecture. Because of its improved capabilities, it can accurately identify complex patterns of road degradation, such as surface deformities, uneven potholes, and imperceptible fissures. YOLOv8l-seg is used in this study to tackle the difficulties of identifying road damage in various settings. For thorough damage analysis and prioritizing in road repair initiatives, the model's exceptional segmentation ability allows it to accurately define the borders of damaged regions. A well-annotated road damage dataset is used to train YOLOv8l-seg to identify and categorize different forms of damage under a variety of lighting and environmental conditions. The higher performance of YOLOv8l-seg supports its usage in

situations demanding high precision and dependability, even if it requires more processing resources than its smaller siblings. For example, it works especially well on busy roadways or in urban areas where accurate damage diagnosis is essential for both safety and effective resource allocation. This research demonstrates how YOLOv8l-seg's combination of scalability and extensive analysis capabilities may greatly improve automated road damage identification systems. The model is a useful tool for advanced infrastructure monitoring and maintenance planning since it has the capacity to handle complicated information.

### **3.9 YOLOv8x-seg**

The "extra-large" version of the YOLOv8 segmentation family, YOLOv8x-seg, is the most reliable and capacious model for identifying and classifying road damage. This version can handle complicated datasets and do accurate segmentation tasks with remarkable precision because of its massive network architecture. YOLOv8x-seg is especially well-suited for situations that call for in-depth investigation, such as spotting small fractures, complicated potholes, or minute surface imperfections on roadways. The YOLOv8x-seg is used in this study to advance automatic road damage identification. The model can precisely categorize and separate different kinds of road damage under a variety of circumstances, including difficult lighting, weather, and environmental settings, thanks to its sophisticated feature extraction capabilities. Through the use of an extensive dataset that has been labeled with a variety of damage kinds, YOLOv8x-seg is trained to identify road degradation with exceptional performance. YOLOv8x-seg offers unparalleled precision, making it perfect for applications where accuracy is crucial, despite its computationally demanding nature and high hardware resource requirements. For instance, its use is very beneficial in the administration of important infrastructure, such as roads, bridges, and cities, where precise damage identification and thorough segmentation are essential for maintenance scheduling

and public safety. This research shows how well YOLOv8x-seg works to solve the problems associated with detecting road damage. Its exceptional performance highlights how sophisticated deep learning models may be used to build scalable, effective, and dependable systems for preventive maintenance and infrastructure monitoring

### 3.10 EVALUATION METHOD

Assessing machine learning models for road damage detection is essential to comprehending their efficacy, dependability, and applicability in practical settings. The performance of YOLOv8 models, such as YOLOv8n-seg, YOLOv8s-seg, YOLOv8m-seg, YOLOv8l-seg, and YOLOv8x-seg, in identifying and categorizing different kinds of road damage is evaluated in this research using a strong evaluation framework. Evaluation Metrics The following are the main assessment metrics:

**Precision:** Highlights the model's ability to prevent false positives by calculating the percentage of accurately recognized road damage cases out of all anticipated instances.

**Recall:** Shows how well the model can identify true positives by calculating the percentage of accurately detected road damage cases out of all actual occurrences.

**F1-Score:** Offers a balanced perspective of model performance by providing a harmonic mean of accuracy and recall.

**Mean Average Precision (mAP):** Provides a thorough evaluation of detection accuracy by calculating the average precision across many classifications of road damage.

**Inference Time:** Assesses the model's speed in real-time detection situations, which is essential for real-world applications, particularly in settings with limited resources.

#### Splitting Datasets

To provide an impartial and equitable assessment, the dataset is separated into subsets for training, validation, and testing. This division helps in evaluating the model's resilience and capacity for generalization over unknown data.

### **Cross-Checking**

K-fold cross-validation is used to confirm the findings' dependability even further. This method guarantees that the models are assessed over a variety of data subsets and reduces the possibility of overfitting.

### **Comparing Different Models**

Accuracy, computational economy, and scalability trade-offs are highlighted when the assessment contrasts the performance of the various YOLOv8 segmentation versions. While sophisticated models like YOLOv8x-seg are tested for high-precision needs, lightweight models like YOLOv8n-seg are analyzed for their appropriateness in low-resource contexts.

### **Actual Situations**

To make sure the models are applicable in a variety of contexts, the assessment also involves testing them in real-world situations, such as different lighting, road textures, and damage types.

The most appropriate strategy for automated road damage detection and maintenance planning is chosen with the help of this thorough assessment process, which guarantees that the research offers useful insights into the advantages and disadvantages of each model.

## **CHAPTER 4**

### **RESULT AND DISCUSSION**

#### **4.1 INTRODUCTION**

In that section, the road damage categorization procedure is explained. Following the phase of data collection and preparation, I have discussed the models and the classification method I used. I will explain the model's outcomes there.

#### **4.2 MODEL PERFORMANCE**

The findings show that model complexity and performance are traded off. Models that are lightweight, such as YOLOv8n-seg and YOLOv8s-seg, have shown reduced computing needs and quicker inference times, which makes them appropriate for contexts with limited resources. They did, however, do somewhat worse in terms of memory and accuracy than their bigger counterparts. However, at the expense of greater computing needs, YOLOv8l-seg and YOLOv8x-seg demonstrated superior detection capabilities and higher accuracy, making them ideal for situations requiring fine-grained damage categorization. YOLOv8m-seg is a flexible option for a range of deployment scenarios since it achieved a balance between accuracy and efficiency.

### 4.3 YOLOv8

With an emphasis on potholes, this project uses YOLOv8-seg to automate the identification and analysis of road damage. The project intends to improve road repair efforts and give real-time danger warnings by precisely detecting and quantifying the size of potholes, greatly enhancing road safety and supporting intelligent urban planning. The integration of computer vision with essential road maintenance initiatives represents a major advancement in the development of technical infrastructure and autonomous vehicle navigation.

Model	size (pixels)	mAP <sup>box</sup> <sub>50-95</sub>	mAP <sup>mask</sup> <sub>50-95</sub>	Speed CPU ONNX (ms)	Speed A100 TensorRT (ms)	params (M)	FLOPs (B)
YOLOv8n-seg	640	36.7	30.5	96.1	1.21	3.4	12.6
YOLOv8s-seg	640	44.6	36.8	155.7	1.47	11.8	42.6
YOLOv8m-seg	640	49.9	40.8	317.0	2.18	27.3	110.2
YOLOv8l-seg	640	52.3	42.6	572.4	2.79	46.0	220.5
YOLOv8x-seg	640	53.4	43.4	712.1	4.02	71.8	344.1

**Figure 5:** YOLOv8 Pre-trained model

Each model in the YOLOv8-seg series, which spans from nano to xlarge, strikes a unique balance between speed and precision. Greater accuracy is possible with bigger models, but reaction time is sacrificed in the process. We selected the YOLOv8n-seg model for our Pothole Segmentation job, which requires fast processing. It is ideal for real-time applications since it is designed for the quickest inference. Notably, the YOLOv8 nano segmentation model was first trained to identify 80 item categories in the COCO dataset, and 'pothole' is not one of those categories. We will need to refine the model on a specific dataset of pothole photos for accurate segmentation in order to detect potholes. There are 60 validation photos

and 720 training images in the dataset. Every picture is uniformly 640x640 pixels in size, which satisfies the input requirements of the YOLOv8-seg model. This consistency guarantees effective training and validation of the model. A strong dataset for learning and enough for validation to reliably evaluate the model's performance are provided by the training to validation split.

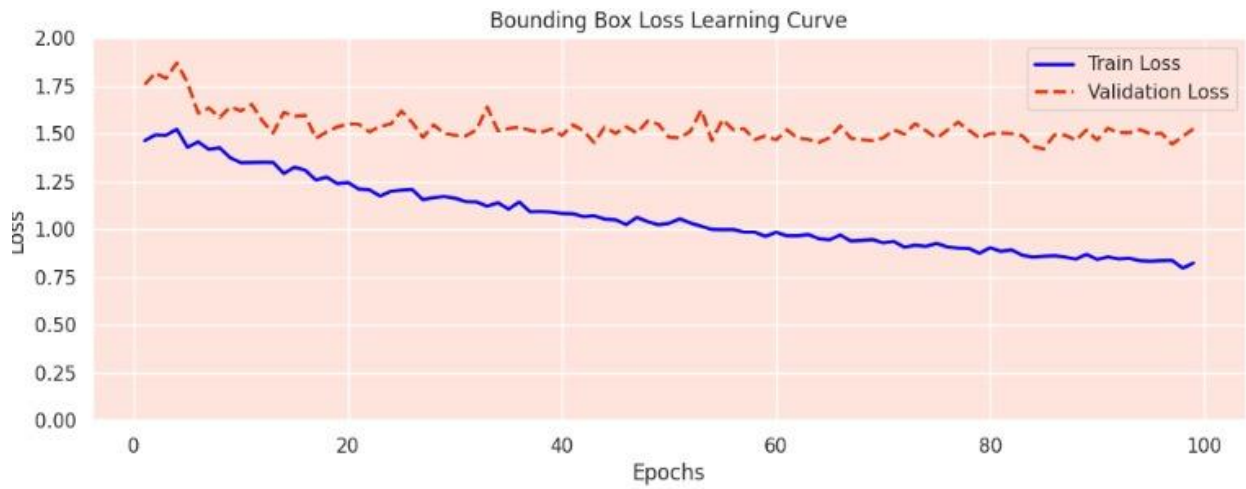


**Figure 6:** Random Selection Of dataset image

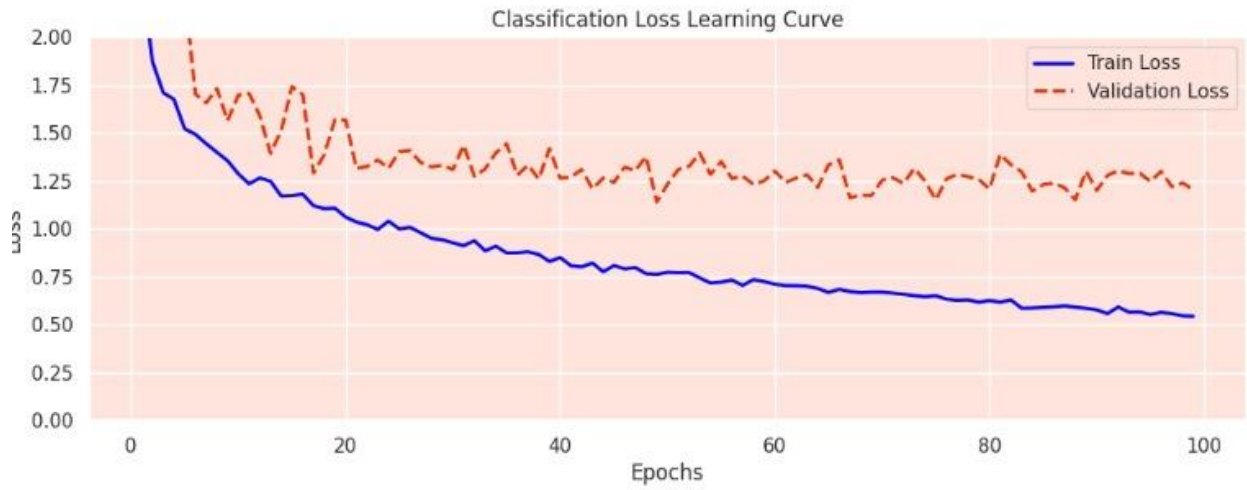
To assess how well our segmentation model is learning, I'll look at patterns in training and validation losses over epochs. These loss patterns may show whether the model is improving, overfitting, or underfitting, and they are crucial markers of the model's learning process. These tendencies are captured in the results.png file, which will serve as our guide. First, let's examine this graph:



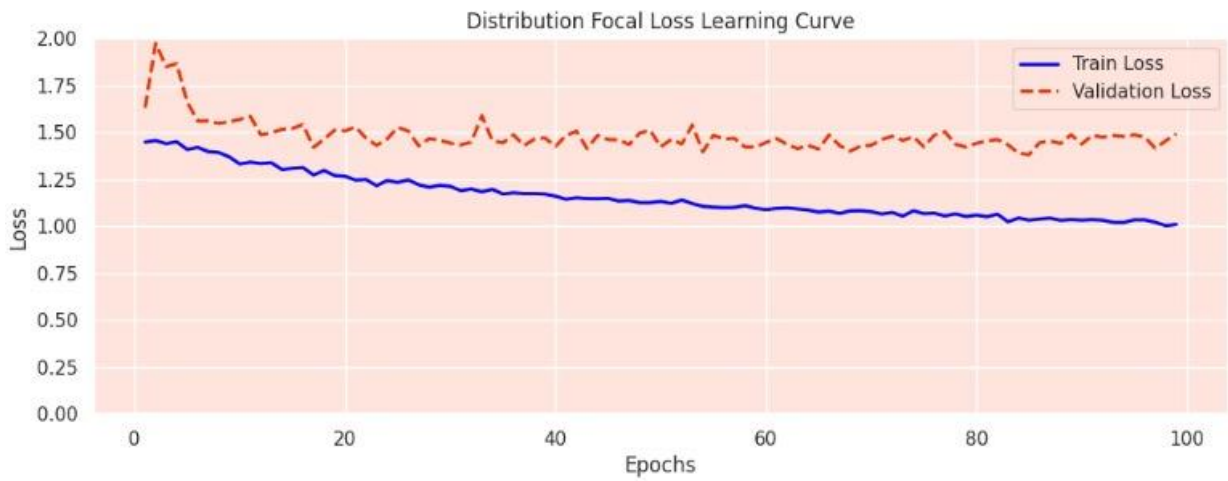
**Figure 7:** Training and validation Loss trends



**Figure 8:** Bounding Box Loss learning curve



**Figure 9:** Classification loss Learning curve



**Figure 10:** distribution Focal loss Learning Curve



**Figure 11:** Segmentation Loss Learning Curve

The learning curves illustrate how well our model fits the validation data during training. The closeness of the training and validation losses indicates that the model can generalize:

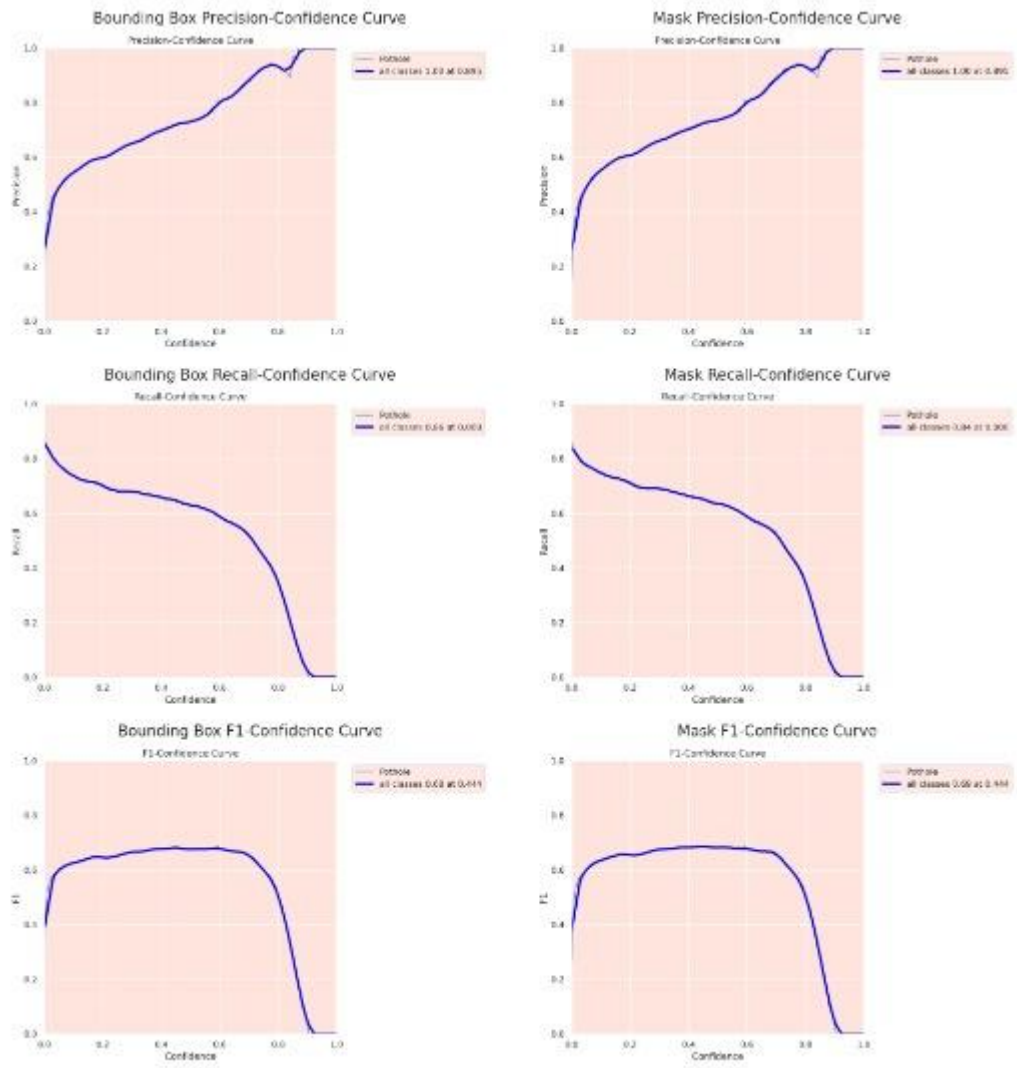
**Bounding Box Loss:** Although the model is usually doing a good job of predicting boxes, the difference between training and validation loss points to some overfitting.

**Classification Loss:** There is potential for improvement since classification performance is good on training data but somewhat declines on validation.

**Distribution Focal Loss:** Shows concentrated learning on difficult cases, and validation results imply that further fine-tuning would be helpful.

**Segmentation Loss:** Indicates possible overfitting and demonstrates the model's segmentation capabilities with some variability in validation loss.

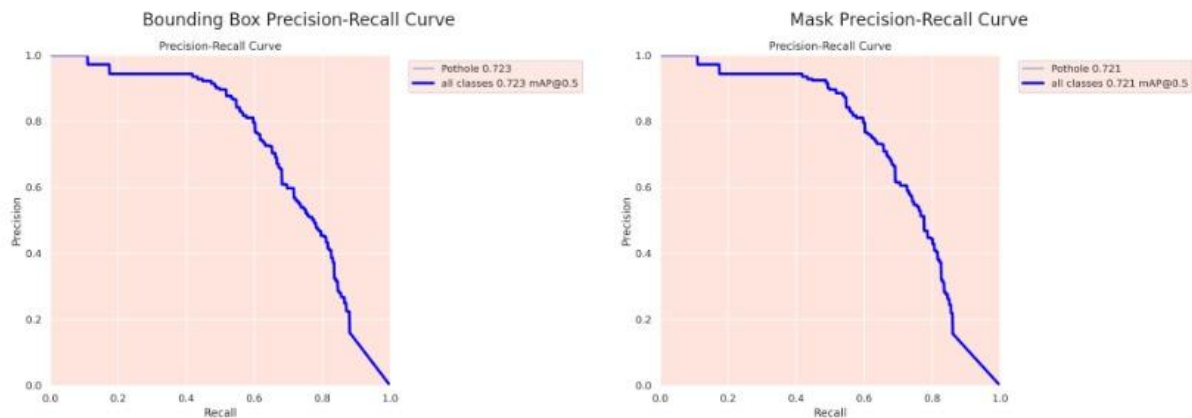
I'll now concentrate on assessing our model's predictive performance using accuracy, recall, and F1 score metrics for both bounding box and mask predictions at different confidence levels:



**Figure 12:** The precision, recall, and F1 score

Our segmentation model performs very well, as seen by the accuracy, recall, and F1 score confidence curves: Accuracy-Confidence Curve: Indicates very accurate predictions for both bounding boxes and masks, with almost perfect accuracy across all confidence levels. Recall-Confidence Curve: Shows that the model reliably detects true positives by maintaining a high recall across all confidence levels. The model works well even at higher confidence

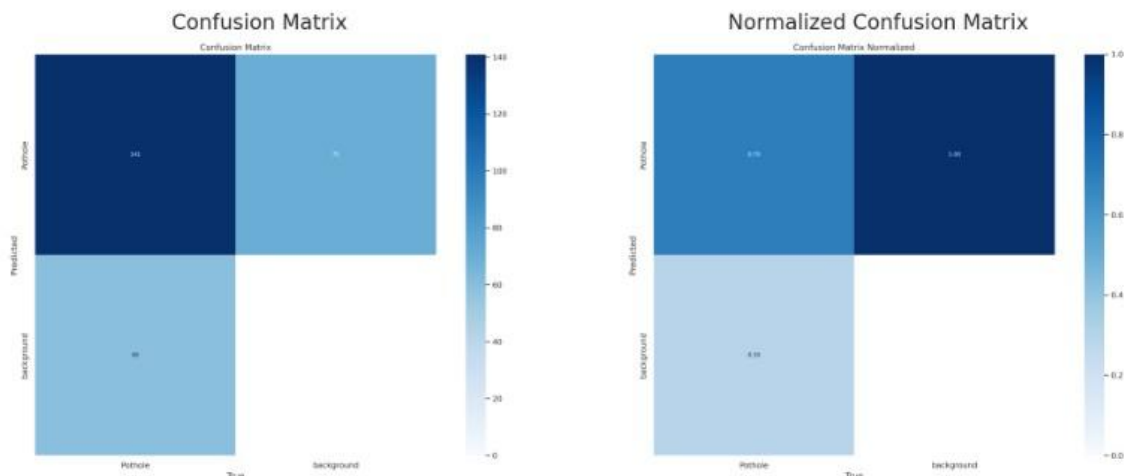
thresholds, as seen by the F1-Confidence Curve, which shows a steady and strong F1 score that suggests a balanced accuracy and recall. All things considered, the model has strong prediction accuracy and outstanding generalization ability. The continuously high metrics at various confidence levels suggest that little modification is required for real-world use.



**Figure 13:** Precision-recall curves

Key elements of our segmentation model's performance are shown by analyzing the precision-recall curves: With a mean Average accuracy (mAP) of 0.72, the Bounding Box Precision-Recall Curve demonstrates a high degree of accuracy and the model's ability to correctly recognize items. Mask accuracy-Recall Curve: This curve indicates that the model is proficient in mask predictions, as seen by a mAP of 0.72, which indicates almost the same accuracy in object segmentation. Both bounding boxes and masks exhibit great accuracy over a range of recall levels, demonstrating the model's dependability and suitability for real-world applications. I'll focus on outlining and carefully analyzing the confusion matrix that represents the predictions made by our model on the validation

set:



**Figure 14:** Confusion matrix for our YOLOv8

Our YOLOv8 pothole segmentation model's normalized confusion matrix offers important information on how well it performs. According to the model's 70% true positive rate, potholes are detected 70% of the time. Some potholes are overlooked during detection, however, as seen by the 30% false negative rate. Considering how difficult pothole segmentation is, this performance is outstanding. I'm exploring a number of measures to evaluate the prediction power of our top segmentation model on the validation set:

Out[17]:

	Metric Value
metrics/precision(B)	0.751
metrics/recall(B)	0.617
metrics/mAP50(B)	0.724
metrics/mAP50-95(B)	0.440
metrics/precision(M)	0.708
metrics/recall(M)	0.657
metrics/mAP50(M)	0.721
metrics/mAP50-95(M)	0.427
fitness	0.924

**Figure 15:** Various metrics to assess

I'll demonstrate our top segmentation model's performance on a few chosen photos from the validation set:



**Figure 16:** Validation set Inferences

## CHAPTER 5

### CONCLUSION AND LIMITATION

#### 5.1: CONCLUSION

In tackling the crucial problem of road damage detection, the research described in this thesis, "Machine Learning-Based Road Damage Detection: A Comprehensive Review and Comparative Analysis," demonstrates the revolutionary potential of machine learning, especially deep learning. This study shows notable progress in automating the detection and categorization of road damage by using sophisticated models like as YOLOv8 and its segmentation variations, providing scalable and economical solutions for practical application. The thorough analysis of many YOLOv8 models provided information on the trade-offs between performance and adaptability, highlighting the greater accuracy of bigger models in complicated detection settings and the versatility of lightweight models in resource-constrained environments. This research emphasizes how crucial it is to balance accuracy, efficiency, and scalability when choosing a model in order to meet certain operational objectives. In the end, by facilitating early diagnosis and preventative maintenance of road networks, this study advances infrastructure management. In addition to improving traffic safety, it lowers maintenance costs and extends the life of infrastructure by offering a methodical framework for detecting road degradation. The results of this thesis provide a strong basis for future research, promoting further investigation into cutting-edge machine learning strategies to tackle important issues in infrastructure and transportation systems.

## 5.2: LIMITATION

Several limitations must be noted, even if this study shows the promise of machine learning models like YOLOv8 for detecting road damage. First, the caliber and variety of the training datasets have a big impact on the models' accuracy and generalizability. Biased models that perform poorly in real-world situations might arise from a lack of representation of different road kinds, environmental factors, and damage patterns. Second, in contexts with limited resources, the computational demands for training and implementing bigger YOLOv8 model variations, such as YOLOv8x-seg, may present difficulties. High-performance hardware, which these models need, may not be available everywhere, especially in underdeveloped nations. Third, depending only on image-based detection may result in errors because of things like bad lighting, occlusions, or bad weather, which might weaken the detection system's resilience. Furthermore, even while deep learning models perform very well, they often lack interpretability, which makes it difficult to pinpoint particular failure scenarios or offer an explanation for their conclusions. Finally, the integration of identified defects into a larger maintenance management system is not covered by this research, which concentrates on detection and classification activities. For these models to be used practically, they need to be further developed to include smooth procedures for prioritizing and making decisions on road repairs. By addressing these issues, future studies may improve the efficiency and usefulness of machine learning-based road damage detecting systems.

### 5.3: REFERENCES

- [1] Islam, M. S., Ibrahim, A. M., Hoque, K. E., Bakhuraisa, K. A., Ali, U., & Skitmore, M. (2024). Advancement in the automation of paved roadways performance patrolling: A review. *Measurement*, 114734.
- 2.Chen, X., Yongchareon, S., & Knoche, M. (2023). A review on computer vision and machine learning techniques for automated road surface defect and distress detection. *Journal of Smart Cities and Society*, 1(4), 259-275.
- 3.Merolla, D., Latorre, V., Salis, A., & Boanelli, G. (2024). Automated Road Safety: Enhancing Sign and Surface Damage Detection with AI. arXiv preprint arXiv:2407.15406.
- 4.Ashraf, A., Sophian, A., Shafie, A. A., Gunawan, T. S., & Ismail, N. N. (2023). Machine learning-based pavement crack detection, classification, and characterization: a review. *Bulletin of Electrical Engineering and Informatics*, 12(6), 3601-3619.
- 5.Safyari, Y., Mahdianpari, M., & Shiri, H. (2024). A Review of Vision-Based Pothole Detection Methods Using Computer Vision and Machine Learning. *Sensors*, 24(17), 5652.
- 6.Cao, W., Liu, Q., & He, Z. (2020). Review of pavement defect detection methods. *Ieee Access*, 8, 14531-14544.
- 7.Kothai, R., Prabakaran, N., Murthy, Y. S., Cenkeramaddi, L. R., & Kakani, V. (2024). Pavement Distress Detection, Classification and Analysis using Machine Learning Algorithms: A Survey. *IEEE Access*.
- 8.Alrajhi, A., Roy, K., Qingge, L., & Kribs, J. (2023). Detection of road condition defects using multiple sensors and IoT technology: A review. *IEEE Open Journal of Intelligent Transportation Systems*, 4, 372-392.
- 9.Silva, P. B., Andrade, M., & Ferreira, S. (2020). Machine learning applied to road safety modeling: A systematic literature review. *Journal of traffic and transportation engineering (English edition)*, 7(6), 775-790.
- 10.Liao, K. (2022, September). Road Damage Intelligent Detection with Deep Learning Techniques. In *2022 IEEE 5th International Conference on Information Systems and Computer Aided Education (ICISCAE)* (pp. 795-799). IEEE.
- 11.Botezatu, A. P., Burlacu, A., & Orhei, C. (2024). A Review of Deep Learning Advancements in Road Analysis for Autonomous Driving. *Applied Sciences*, 14(11), 4705.
- 12.Sholevar, N., Golroo, A., & Esfahani, S. R. (2022). Machine learning techniques for

pavement condition evaluation. *Automation in Construction*, 136, 104190.

13.Cao, W., Liu, Q., & He, Z. (2020). Review of pavement defect detection methods. *Ieee Access*, 8, 14531-14544.

14.Hou, Y., Li, Q., Zhang, C., Lu, G., Ye, Z., Chen, Y., Wang, L. and Cao, D., 2021. The state-of-the-art review on applications of intrusive sensing, image processing techniques, and machine learning methods in pavement monitoring and analysis. *Engineering*, 7(6), pp.845-856.

15.Gopalakrishnan, K. (2018). Deep learning in data-driven pavement image analysis and automated distress detection: A review. *Data*, 3(3), 28.

16.Ale, L., Zhang, N., & Li, L. (2018, December). Road damage detection using RetinaNet. In *2018 IEEE International Conference on Big Data (Big Data)* (pp. 5197-5200). IEEE.

17.Maeda, H., Sekimoto, Y., Seto, T., Kashiyama, T., & Omata, H. (2018). Road damage detection and classification using deep neural networks with smartphone images. *Computer-Aided Civil and Infrastructure Engineering*, 33(12), 1127-1141.

18.Arya, D., Maeda, H., Ghosh, S. K., Toshniwal, D., Omata, H., Kashiyama, T., & Sekimoto, Y. (2020, December). Global road damage detection: State-of-the-art solutions. In *2020 IEEE International Conference on Big Data (Big Data)* (pp. 5533-5539). IEEE.

20.Arya, D., Maeda, H., Ghosh, S. K., Toshniwal, D., Omata, H., Kashiyama, T., & Sekimoto, Y. (2020, December). Global road damage detection: State-of-the-art solutions. In *2020 IEEE International Conference on Big Data (Big Data)* (pp. 5533-5539). IEEE.

21.Maeda, H., Kashiyama, T., Sekimoto, Y., Seto, T., & Omata, H. (2021). Generative adversarial network for road damage detection. *Computer-Aided Civil and Infrastructure Engineering*, 36(1), 47-60.

22.Pham, V., Pham, C., & Dang, T. (2020, December). Road damage detection and classification with detectron2 and faster r-cnn. In *2020 IEEE International Conference on Big Data (Big Data)* (pp. 5592-5601). IEEE.

23.Maeda, H., Sekimoto, Y., Seto, T., Kashiyama, T., & Omata, H. (2018). Road damage detection using deep neural networks with images captured through a smartphone. *arXiv preprint arXiv:1801.09454*.

24.Arya, D., Maeda, H., Ghosh, S. K., Toshniwal, D., & Sekimoto, Y. (2024). RDD2022: A multi-national image dataset for automatic road damage detection. *Geoscience Data Journal*, 11(4), 846-862.

25.Alfarrarjeh, A., Trivedi, D., Kim, S. H., & Shahabi, C. (2018, December). A deep learning

approach for road damage detection from smartphone images. In 2018 IEEE International Conference on Big Data (Big Data) (pp. 5201-5204). IEEE.

26.Arya, D., Maeda, H., Ghosh, S. K., Toshniwal, D., Mraz, A., Kashiya, T., & Sekimoto, Y. (2020). Transfer learning-based road damage detection for multiple countries. arXiv preprint arXiv:2008.13101.

27.Pham, V., Nguyen, D., & Donan, C. (2022, December). Road damage detection and classification with YOLOv7. In 2022 IEEE International Conference on Big Data (Big Data) (pp. 6416-6423). IEEE.

28.Pham, V., Nguyen, D., & Donan, C. (2022, December). Road damage detection and classification with YOLOv7. In 2022 IEEE International Conference on Big Data (Big Data) (pp. 6416-6423). IEEE.

## Plagiarism Report

### Machine Learning-Based Road Damage Detection: A Comprehensive Review and Comparative Analysis

#### ORIGINALITY REPORT

<b>20%</b>	<b>16%</b>	<b>16%</b>	<b>10%</b>
SIMILARITY INDEX	INTERNET SOURCES	PUBLICATIONS	STUDENT PAPERS

#### PRIMARY SOURCES

<b>1</b>	<b>dspace.daffodilvarsity.edu.bd:8080</b> Internet Source	<b>3%</b>
<b>2</b>	<b>export.arxiv.org</b> Internet Source	<b>1%</b>
<b>3</b>	<b>www.mdpi.com</b> Internet Source	<b>1%</b>
<b>4</b>	<b>Submitted to University of Nizwa</b> Student Paper	<b>1%</b>
<b>5</b>	<b>Submitted to Liverpool John Moores University</b> Student Paper	<b>&lt;1%</b>
<b>6</b>	<b>research.bond.edu.au</b> Internet Source	<b>&lt;1%</b>