

WORKING AS EXECUTIVE (IT) IN ANIS IT CORPORATION

BY

Md. Mehidi Hassan

ID: 153-15-6471

This Report Presented in Partial Fulfillment of the Requirements for the Degree of
Bachelor of Science in Computer Science and Engineering

Supervised By

Ahmed Al Marouf

Lecturer,

Department of CSE

Daffodil International University

Co-Supervised By

Shah Md. Tanvir Siddiquee

Senior Lecturer,

Department of CSE

Daffodil International University



DAFFODIL INTERNATIONAL UNIVERSITY

DHAKA, BANGLADESH

December 2018

APPROVAL

This Internship titled “**Working As Executive (IT) In Anis IT Corporation**” submitted by Md. Mehidi Hassan ID No:153-15-6471 to the Department of Computer Science and Engineering, Daffodil International University, has been accepted as satisfactory for the partial complete of the requirements for the degree of B.Sc. in Computer Science and Engineering and approved as to its style and contents. The presentation has been held on 11th December 2018.

BOARD OF EXAMINERS

Dr. Syed Akhter Hossain
Professor and Head

Department of Computer Science and Engineering
Faculty of Science & Information Technology
Daffodil International University

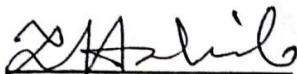
Chairman



Narayan Ranjan Chakraborty
Assistant Professor

Department of Computer Science and Engineering
Faculty of Science & Information Technology
Daffodil International University

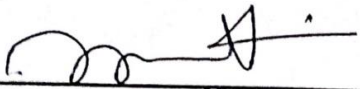
Internal Examiner



Md. Tarek Habib
Assistant Professor

Department of Computer Science and Engineering
Faculty of Science & Information Technology
Daffodil International University

Internal Examiner



Dr. Mohammad Shorif Uddin
Professor

Department of Computer Science and Engineering
Jahangirnagar University

External Examiner

DECLARATION

I hereby declare that this Internship has been done by me, **Md. Mehidi Hassan, ID: 153-15-6471** to the department of department of Computer Science & Engineering, Daffodil International University Under the supervision of **Ahmed Al Marouf, Lecturer, Department of CSE** Daffodil International University. I also declare that neither this internship nor any part of this Internship has been submitted elsewhere of award of any degree or diploma. I also declare that I collect information from Daffodil International University, Books & Internet.

Supervised by:

Md. Ahmed Al Marouf
Lecturer
Department of CSE
Daffodil International University

Co-Supervised by:

Shah Md. Tanvir Siddiquee
Senior Lecturer,
Department of CSE
Daffodil International University

Submitted by:

Md. Mehidi Hassan
ID: 153-15-6471
Department of CSE
Daffodil International Universit

ACKNOWLEDGEMENT

First I express my heartiest thanks and gratefulness to almighty God for His divine blessing makes me possible to complete the final year internship successfully.

I really grateful and wish my profound indebtedness to Supervisor **Md. Ahmed Al Marouf Lecturer** Department of CSE Daffodil International University, Dhaka. Deep Knowledge & keen interest of my supervisor in the field of IT sector to carry out this intern project. His endless patience, scholarly guidance, continual encouragement, constant and energetic supervision, constructive criticism, valuable advice, reading many inferior draft and correcting them at all stage have made it possible to complete this internship.

I would like to express my heartiest gratitude to **Dr. Syed Akhter Hossain** professor and Head, Department of CSE, for his kind help to finish my internship and also to other faculty member and the staff of CSE department Of Daffodil International University. I would like to thank my entire course mate in Daffodil International University, who took part in this discuss while completing the course work.

Finally, I must acknowledge with due respect the constant support and patients of my parents.

ABSTRACT

My internship title is “**Working As Executive (IT) In Anis IT Corporation**”. I work in ERP Management System, Hardware and Networking. Internet is very important to communicate with each other. So in the future I show a lot of opportunity to improve the networking side. I think one upon a time many company is coming in the market to help and secure our data. So we need a lot of network engineer. So the market we show many opportunities to start a job. That is why I chose my internship topic as “**Working As Executive (IT) In Anis IT Corporation**”.

TABLE OF CONTENTS

CONTENTS	PAGE NO.
Board of examiners	II
Declaration	III
Acknowledgements	IV
Abstract	V
List of Figures	VIII
CHAPTER	
CHAPTER 1: INTRODUCTION	1-3
1.1 Introduction	1
1.2 Motivation	1
1.3 Internship objectives	1
1.4 Introduction to the Company	2
1.5 Report Layout	2-3
CHAPTER 2: ORGANAIZATION	4-7
2.1 Introduction	4
2.2 list of Product's	4-5
2.3 Target Group	5
2.4 SWOT Analysis	6-7
2.5 Organizational Structure	7
CHAPTER 3:TASKS, PROJECTS AND ACTIVITIES	8-26
3.1 Daily Task and Activities	8
3.2 Events and Activities	8
3.3 Project Task and Activities	9-25
3.4 Challenges	26

CHAPTER 4: COMPETENCIES AND SMART PLAN	27
4.1 Competencies Earned	27
4.2 Smart Plan	27
4.3 Reflections	27
CHAPTER 5 : CONCLUSION AND FUTURE CAREER	28
5.1 Discussion and Conclusion	28
5.2 Scope for Further Career	28
REFERENCES	28
APPENDIX	29
Appendix A: Internship Reflection	29
Appendix B: Company Detail	29

LIST OF FIGURES

Figure	Page No.
Figure: 2.4.1 SWOT Analysis	6
Figure: 2.5.1 Organization Structure.	7
Figure: 3.3.1 Network Diagram.	9
Figure: 3.3.2 Clone Desktop PC	11
Figure: 3.3.3 HP Laptop	11
Figure: 3.3.4 D-Link Router	12
Figure: 3.3.5 D-Link Switch	12
Figure: 3.3.6 TP-Link Access Point	13
Figure: 3.3.7 Channel	13
Figure: 3.3.8 Cable Dressing	14
Figure: 3.3.9 Cat-6 Cable	15
Figure: 3.3.10 Connector	15
Figure: 3.3.11 Printer	15
Figure: 3.3.12 Assign IP Address to PC	17
Figure: 3.3.13 Assign IP Address to PC	17
Figure: 3.3.14 Connectivity of router by Ping Command	18
Figure: 3.3.15 admin and Password	18
Figure: 3.3.16 Setup Option	19
Figure: 3.3.17 IP Setup	20
Figure: 3.3.18 Network Key	20
Figure: 3.3.19 Control Panel	21
Figure: 3.3.20 Printer Properties	21
Figure: 3.3.21 Printer Sharing	22
Figure: 3.3.22 Change Sharing Option	23
Figure: 3.3.23 Printer Properties	24
Figure: 3.3.24 Run Option	25
Figure: 3.3.25 Connect Printer	25

CHEPTER-1

INTRODUCTION

1.1 Introduction

The internship offer is practical works to support in any company such like as install program support hardware software issues that like as the any problem of the company and IT sector I can support very well in the company. This is the channeling way to me that the very important issues of my life and I connected to the any company. This is the Very experience of job market is very helpful for me. This internship provided to the IT section of ANIS IT Corporation.

1.2 Motivation

I am currently pursuing my Bachelor in Computer Science Engineering at Daffodil International University. I understand the importance of practical knowledge which is full of knowledge of textbooks and life problem solving. My dream is to establish me as a network security expert. And I enjoyed that networking job very much. Seeking for a challenging and rewarding post in a dynamic company where I can use my strong technical knowledge and skills. My skills remain in my ability to read and understand the situation and to work quickly and still beautiful. I also saw the work of the server and its responsibility. I think that my work will make me more successful in my life.

1.3 Internship Objectives

Understood the importance of the executive IT as a medium of communication. Understood the principles of creating a system support, information architecture. To build the strength, team work speed and self-confidence. Internship will increase my sense and responsibility and good work habits. I can utilize my technical, management and HR skills for achieving the target and developing the best performance. I would like to implement my innovative ideas; skills and creativity for accomplishing the job for develop my career in IT sector.

1.4 Introduction to the Company

Journey Begins with Anis IT Corporation Ltd (2017)

“**Anis IT Corporation**” is one of the renowned and fast growing IT in Bangladesh Established in 2017. The company has a very good training facility located at 426 (3rd Floor), Mukta Bangla Shopping Complex, Mirpur-01, Dhaka-1216 . It has been launching new and innovative idea in the Bangladeshi IT industry. The company gives various facilities such as Professional IT course training such as MS Office, Graphics Design, Hardware Engineering, Professional Networking, Cisco Certified Network Associate (CCNA R & S), MikroTik Certified Network Associate (MTCNA), Windows Server 2016, Red Hat Certified System Administrator (RHCSA), Red Hat Certified Engineer (RHCE), Auto CAD (2D, 3D, 3Ds Max), Video Editing, Web Site Design and Development, Software Development (Online & Offline), Android Apps Development, Search Engine Optimization (SEO) etc. Without these training facilities they also provide Corporate Logo, Banner Design, Hardware, Networking & Server Support, IT Products supply, Domain & Hosting reselling, Corporate IT Training etc. It has more than team member to manage all that services.

Now Anis IT Corporation Ltd continues his journey

1.5 Business Background

Anis IT Corporation Ltd was established in 2017 as a proprietorship concern of Mr. Gaus Uddin Khan. The company has a very good training facility in Bangladesh It sector. In 2017 the Company was incorporated as a Private Limited Company and named Anis It Corporation Ltd. Now a days this it corporation is very increased day by day. This corporation also business by Dewan ICT Group, Unique Group, Real estate company in Bangladesh.

Vision

To reach the highest level of ICT sector and contribute in the micro and macro economy of the country and ensure genuine education to the nation. Achieving the target of the services and ultimate is to expand from national proximity and to approach in the international market. Enriching the human resource and converting to fit for competitiveness in the international market.

Mission

Our mission is to deliver ICT services and achieve leadership in ICT markets through the constant pursuit, in association with our clients and partners, of superior levels of service, efficiency and quality. The pursuit of our mission will in turn lead us towards our vision of being the highest quality and most profitable owner and operator of the world's top ICT businesses, based on strategic focus in five key areas.

CHAPTER 2

ORGANIZATION

2.1 Introduction

Modern sophisticated machineries and highly qualified and skilled professionals are the main instrument for this “**Anis IT Corporation**” success. In this report we have gone through the overall IT policies and practices of “ANIS IT Corporation” & IT functions like Training, Software Development, Corporate Networking & Server Support, IT Products Sales & Support, and Domain & Hosting etc. Without it Employee Relation are very systematic and legal. “**Anis IT Corporation**” always tries to recruit efficient candidates for the vacant position. They provide IT training, Corporate Training, Advanced Training etc.

2.2 List of Product’s

- Training the students of Professional Courses.
- Maintain & Convince the Corporate Clients and Students.
- IT Marketing (Online & Offline).
- Corporate IT Set Up & Support.
- Laptops & Notebooks: Asus, HP, Dell, Lenovo.
- Desktops: Asus, Acer, HP, Dell, Dell All in one, Asus All in one.
- Monitor: Asus, LG, Samsung, Dell, HP, Philips.
- Software & Antivirus: Adobe, Antivirus’s, Customize Software, Microsoft.
- Security & Surveillance: Access control, Attendance Device, CCTV Camera.
- Networking Product: Cable, Switch, LAN Card, Modem, Router.
- Printer & Scanner: Cartridge, Printer All Brand, Scanner All Brand, Toner.

2.2.1 Information Technology Related I Work on

- In “**Anis IT Corporation**” organization employee and student problem solving and solutions.
- Hardware and network problem solutions.
- Printer and scanner installation troubleshooting share maintaining both Desktop and Laptop.
- IT Marketing (Online & Offline).
- Marketing is more important for a company. We are not also exceptions of it. Our company also marketing their products and services online or offline. We also help and support to do online and offline marketing for this organization. I use Facebook Page, YouTube Channel for marketing.
- Maintain & Convince the Corporate Clients and Students.
- Maintain the Visitor or Client who is visiting our organization. I offer IT courses to the visitor and try to concealing them. Without it I also convince the corporate client by over phone or visiting physically door to door. Also, convince the existing students to do more courses in our organization. I also update the corporate clients, visitors and student database.
- Installing and configuring computer hardware, software, systems, networks, printers and scanners.
- Monitoring and maintaining computer systems and networks.
- Responding in a timely manner to service issues and requests.
- Providing technical support across the company (this may be in person or over the phone)

2.3 Target Group

The visions for “**Anis IT Corporation**” are to have a sustainable growth in terms of output and quality and to make a significant contribution towards the betterment of the workforce in the company. It is engaged with strategic marketing process which involves building customer relationships by creating and delivering superior customer value aiming to produce high customer equity. It create successfully and efficiently blending skilled people, resources, organizational structure and decisions for implementing strategies at all levels. This organization

is continuously creating innovative idea to its very step of operation to add distinctiveness and competitiveness to the products and services.

2.4 SWOT Analysis



Fig. 2.4.1 SWOT Analysis

Strengths

- Our Organization also gives us a sense of control and allows for increased productivity. It is Bangladeshi brand Company and built upon a good reputation for service and product.
- We can give better business service for other company very carefully.
- Our company respected employers that value its workforce is good.
- Our Organization has strong moral values and moral mission statement.

Weaknesses (negative points)

- High level of resistance and adaptability to changes.
- Gaps in the organizational leadership.
- Motivational problems of the staff.
- Limited levels of the individual abilities.

- The stress and the difficulties to process them.
- Lacks in the social abilities and training.

Opportunities (positive elements)

- Our company business sector is developing and with many future opportunities for success.
- Our opponent may be slow to take up new technologies.
- Sometime many companies want to take help from our company.
- Our company create new technology product and sometimes offer good job opportunities for expert engineers.

Threats (negative elements)

- Take on high levels of risk.
- Changes of the real estate positioning environment.
- Changes in the real estate market.
- Changes of the potential buyers’ preferences.

2.5 Organization Structure

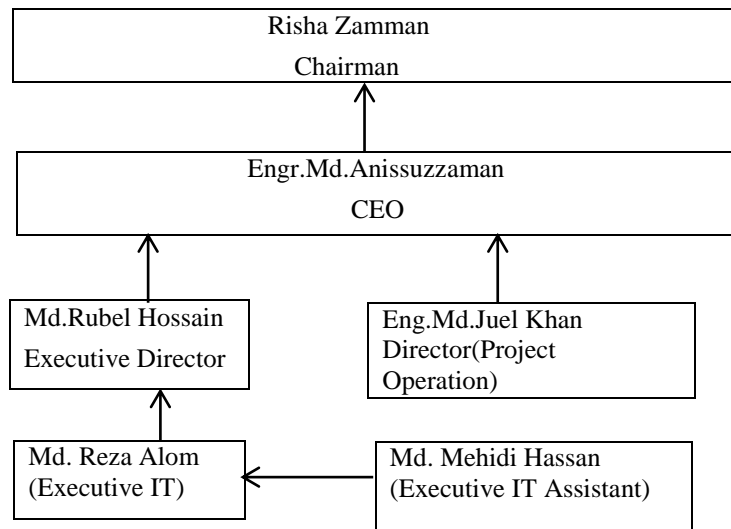


Figure: 2.5.1 Organization Structure.

CHAPTER 3

Tasks, Projects and Activities

3.1 Daily Task and Activities

My office starts at 9.00 AM and close at 6.00 PM. In this time I do many others work daily ration maintained.

- I am training of Microsoft office course, computer graphics course and basic computer networking course.
- I am also maintain & convince the corporate clients and students.
- Analysis Last day works and if I do any mistake here tries to solve with senior IT engineer.
- Perfectly I want to try gives various IT support in Assurance Corporate project company.
- Solve many others hardware problems in our company.
- Create and Maintain some IT System Support Documentation.
- When I fall any problem I don't be haziness and as soon as possible co-operate senior IT engineer with me.

3.2 Events and Activities

Internship program provides students with guaranteed internship placement with a premier event planning internships. The entire placement process, as work with an Internship Coordinator as they assist in revising resume, before scheduling interviews with our large network of event planning companies. Before I begin the placement process, I must first apply and be accepted to a program and city to begin.

Event Planning Internships offer an experience which entails a variety of responsibilities. These responsibilities include supporting all facets of planning events such as parties, ceremonies, competitions, or conventions for clients big and small. The experience that I'll gain from an Event Planning Internship can be as varied as the events themselves.

3.3: Project Task and Activities

When we get the order for setup the network with computer accessories then our boss tell, me how to complete this project and I also describe the steps to complete the project.

- Step-01 : Create the Network Diagram.
- Step-02 : Buy the IT Products.
- Step-03 : Assembling the Hardware Items
- Step-04 : OS Setup & Software Installation
- Step-05 : Bring the products by transportation in project site.
- Step-06 : Setup the Products in Desk.
- Step-07 : Setup the Channel and Cabling for Connectivity
- Step-08 : Configure the Router (WAN & LAN)
- Step-09 : Printer Sharing on a Networ
- Step-10 : Handover the Project.

Step-01: Create the Network Diagram.

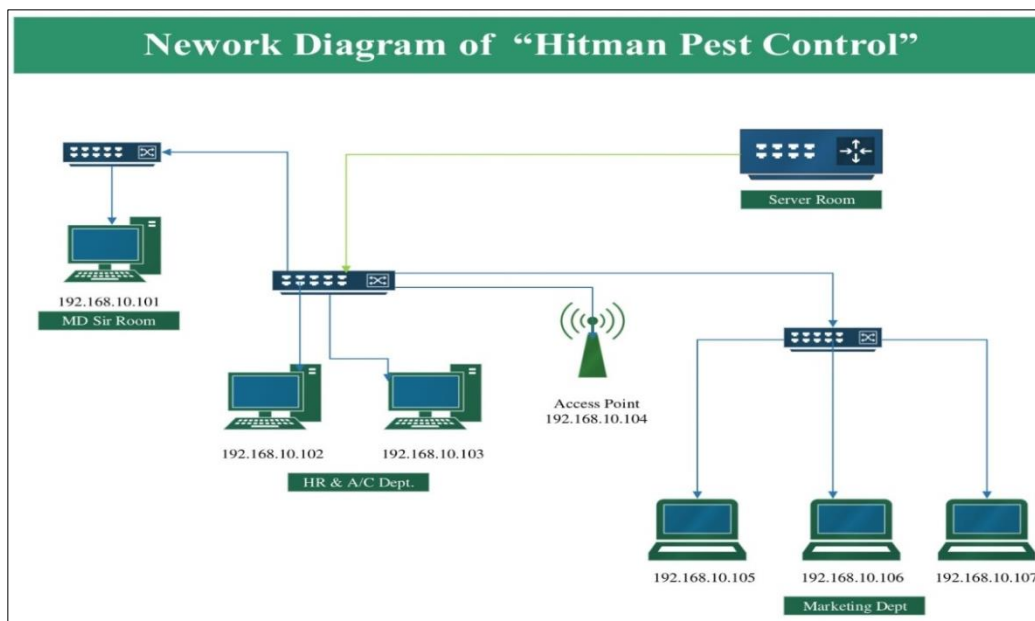


Fig. 3.3.1 Network Diagram

First, we create the Network Diagram, which we will follow to create the Corporate Office Network. There was 6 PC (s) in 3 Rooms.

01. Managing Director's Room
02. HR & A/C Dept. &
03. Marketing Dept.

We enlisted the following IT Accessories for doing this network setup.

01. Desktop PC – 03 Pcs
02. Laptop – 03 Pcs
03. Router – 01 Pcs
04. Switch – 03 Pcs
05. Access Point – 01 Pcs
06. Channels for Cable dressing
07. Cables & Connectors
08. Printer

Step-02: Buy the IT Products

For Office Network setup purpose, we need to buy these following products.

01) Clone Desktop PC

- a. Motherboard: Gigabyte H310M DS2V
- b. Processor: Intel Core i5 8th Gen 8400
- c. RAM: 8 GB DD4-2400 MHz
- d. HDD: Toshiba 1 TB 7200 RPM
- e. DVD Drive: Samsung Internal DVD Drive
- f. Monitor: Dell E1916HV 18.5 Inch
- g. A4 Tech Keyboard & Mouse
- h. Power Supply with Casing



Fig. 3.3.2 Clone Desktop PC

02) Laptop

- HP Probook 440 G5
- Intel Core i3 2.40 GHz, 3M Cache
- RAM-04 GB DDR4, HDD-01 TB
- 14 Inch Backlit LED Display



Fig. 3.3.3 HP Laptop

03) Router

D Link DIR-882 EXO AC2600 MU-MIMO Wifi Router

- 1 Gigabit WAN; 4 Gigabit LAN
- 10 x 7 x 1.75 inches
- Frequency: 2.4 GHz / 5 GHz



Fig. 3.3.4 D-Link Router

04) Switch (5 Port)

D-Link DES-1005 C 5 Port 10/100M

- Speed: 10/100Mbps
- Interface: Five 10/100 Mbps LAN
- Dimensions: 87 x 47.85 x 21.7mm



Fig. 3.3.5 D-Link Switch

05) Access Point

TP-Link TL WA901ND 450 Mbps Wireless N Access Point

- Interface: One 10/100M LAN Port
- Frequency: 2.4-2.4835GHz
- Power: <20dBm



Fig. 3.3.6 TP-Link Access Point

06) Channel with Cable Dressing



Fig. 3.3.7 Channel

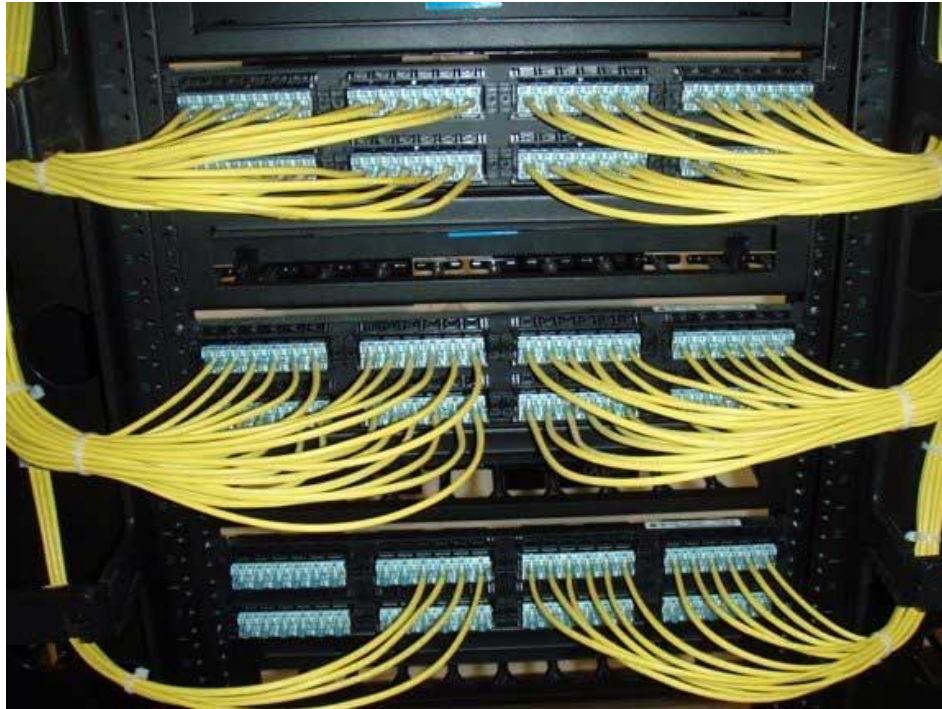


Fig. 3.3.8 Cable Dressing

07) Cable & Connector

Cable:

D-Link Cat 6 Cable 305 M (Copy)

- PE insulation
- PE central cross
- FR PVC/LSZH Jacket

Connector:

AMP Cat 6 RJ 45 Cable Connector

- Plug Type RJ-45
- Conductors 8
- Material 3U Golden Cooper



Fig. 3.3.9 Cat-6 Cable



Fig. 3.3.10 Connector

08) Printer

HP LaserJet P2035

- Mono Printer - Perfect for 3 to 10 users
- Print Only
- Paper Size - A4
- Connectivity - USB only
- Print speeds of up to 30 pages per minute on letter-sized paper



Fig. 3.3.11 Printer

Step-03-07: All Setup until Start the PC

We assemble all the desktop pc(s) and set the following software with OS.

Operating System

Windows 10 64 Bit Professional Version

Software Lists

- MS Office 2016
- Adobe Photoshop CS6
- Adobe Illustrator CS6
- Adobe Reader
- Adobe Flash Player
- Bijoy Bayanno 2016
- Mozilla Firefox
- Internet Download Manager 6.21
- Team Viewer 13
- Winrar 64 Bits

We take all the IT Accessories by transport and setup in desk with channel, Straight Thorough Cabling with RJ-45 connector for Internet Connection. The Straight cabling sequence is given below:

After setup all the devices and cabling we give IP (Internet Protocol) all the PC(s), Laptops, Router & Access Point that is given in Network Diagram

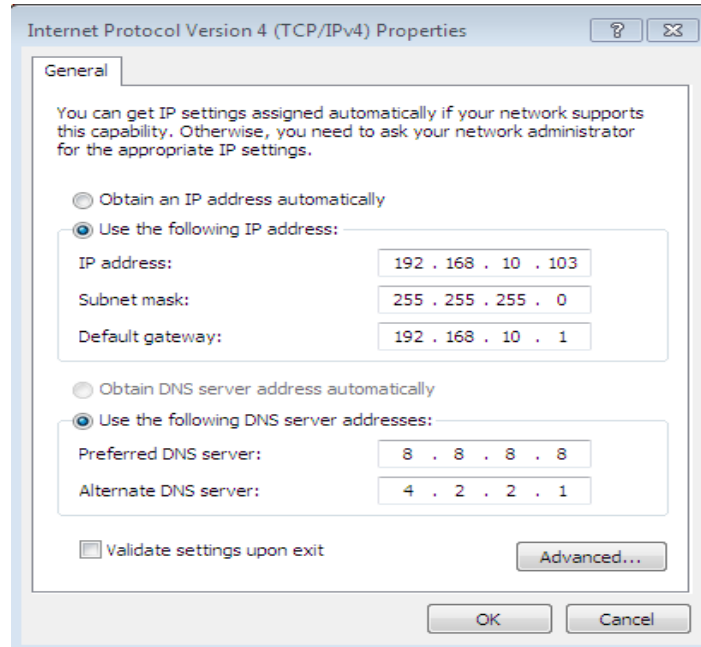


Fig. 3.3.12 Assign IP Address to PC

Step-08: Configure the Router (WAN & LAN)

- 1) We Establish the Physical Connection
 - a. Cat 6 Cable from ISP in Router's WAN Port
 - b. External LAN cable connected with Laptop for configuration purpose.
- 2) Give an IP manually which is given in below:

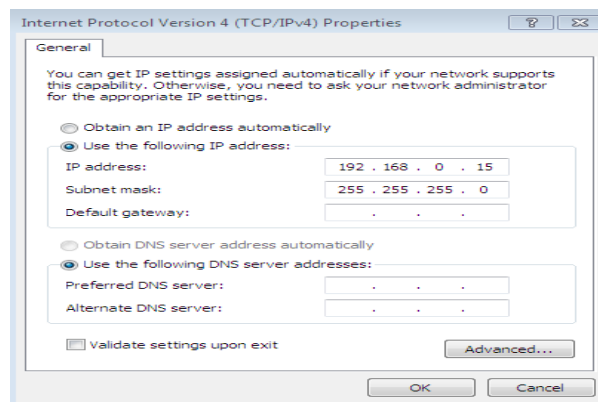


Fig. 3.3.13 Assign IP Address to PC

- 3) Check the Connectivity of router by Ping Command.
 - a) Press Windows Button + R
 - b) Type “cmd” and Press Enter.
 - c) In Black Screen/Console type “ping 192.168.0.1 –t”

```
C:\Windows\system32\cmd.exe - ping 192.168.0.1 -t
Minimum = 5ms, Maximum = 17ms, Average = 10ms
C:\Users\D-anis.D-anis-PC>ping 192.168.0.1 -t
Pinging 192.168.0.1 with 32 bytes of data:
Reply From 192.168.0.1: bytes=32 time=20ms TTL=63
Reply From 192.168.0.1: bytes=32 time=2ms TTL=63
Reply From 192.168.0.1: bytes=32 time=16ms TTL=63
Reply From 192.168.0.1: bytes=32 time=1ms TTL=63
Reply From 192.168.0.1: bytes=32 time=2ms TTL=63
Reply From 192.168.0.1: bytes=32 time<1ms TTL=63
Reply From 192.168.0.1: bytes=32 time=4ms TTL=63
Reply From 192.168.0.1: bytes=32 time=1ms TTL=63
Reply From 192.168.0.1: bytes=32 time=3ms TTL=63
Reply From 192.168.0.1: bytes=32 time=6ms TTL=63
Reply From 192.168.0.1: bytes=32 time=8ms TTL=63
Reply From 192.168.0.1: bytes=32 time=1ms TTL=63
Reply From 192.168.0.1: bytes=32 time=5ms TTL=63
Reply From 192.168.0.1: bytes=32 time=17ms TTL=63
Reply From 192.168.0.1: bytes=32 time=2ms TTL=63
Reply From 192.168.0.1: bytes=32 time=3ms TTL=63
Reply From 192.168.0.1: bytes=32 time=1ms TTL=63
Reply From 192.168.0.1: bytes=32 time=8ms TTL=63
Reply From 192.168.0.1: bytes=32 time=7ms TTL=63
```

Fig. 3.3.14 Connectivity of router by Ping Command

- d) Go to Browser and type “192.168.0.1” and Press Enter. Type the Username: admin and Password: password.



Fig. 3.3.15 admin and Password

- a) Go to Setup Option>Internet Setup and do the following things.
 - a. Protocol: Static IP
 - b. WAN IP Address: 103.36.100.235/27 (From ISP)
 - c. WAN Subnet Mask: 255.255.255.224
 - d. Default Gateway: 103.36.100.225
 - e. Preferred DNS Server: 8.8.8.8
 - f. Alternative DNS Server: 8.8.4.4
 - g. Click “Apply” and “OK”.

D-Link

DSL-2750U // SETUP ADVANCED MANAGEMENT STATUS HELP

Wizard
Internet Setup
Wireless
Local Network
LAN IPv6
Time and Date
Logout

INTERNET SETUP
In this page, you can configure an Ethernet-LAN identifier and select a service category.

CONNECTION TYPE

Protocol : Static IP

802.1Q VLAN ID : 0 (0 = disable, 1 - 4094)

IPv4 Enable :

IPv6 Enable :

WAN IP SETTINGS

WAN IP Address : 103.36.100.235/27

WAN Subnet Mask : 255.255.255.224

Default gateway : 103.36.100.225

Preferred DNS server : 8.8.8.8

Alternate DNS server : 8.8.4.4

Fig. 3.3.16 Setup Option

- b) After that, We go Setup>Network Setup and fixed the LAN address by doing the following things.
- My LAN Connection : Static IP
 - IP Address: 192.168.10.102
 - Subnet Mask: 255.255.255.0
 - Gateway Address: 192.168.10.1



Fig. 3.3.17 IP Setup

- c) Set the SSID & Wi-Fi Password.

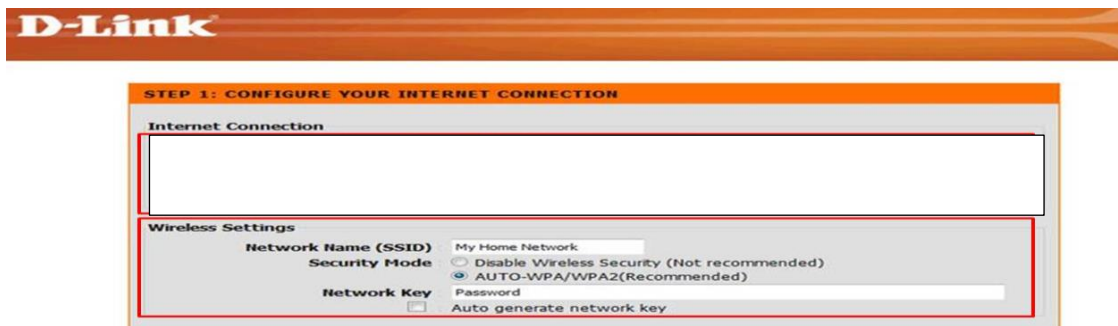


Fig. 3.3.18 Network Key

d) Step-09: Printer & File Sharing on a Network

Printer Sharing on a Network (From Server PC)

- 1) Install the HP Printer on a PC which IP is 192.168.10.102
- 2) After we go Control Panel>Device & Printer>

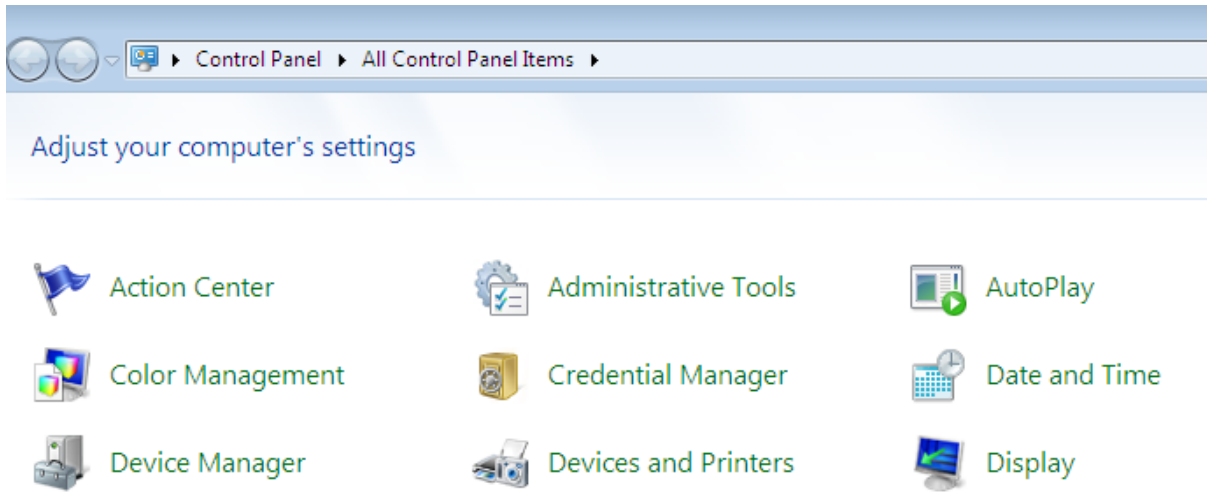


Fig. 3.3.19 Control Panel

- 3) Select that printer, click the right button of mouse, and go “Printer Properties”.

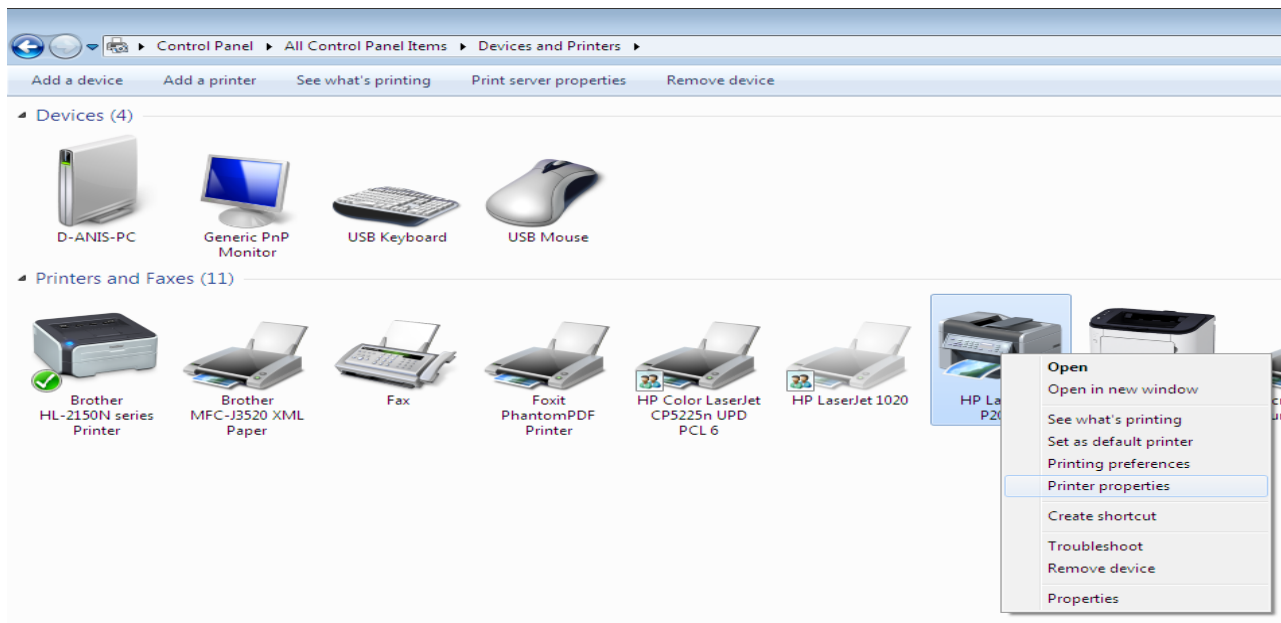


Fig. 3.3.20 Printer Properties

- 4) After that from “Port Tab” do these thing
 - a. Mark in “Share this printer” Option
 - b. Mark “Render print jobs on client computers”.
- 5) Then “Apply” & “OK”.

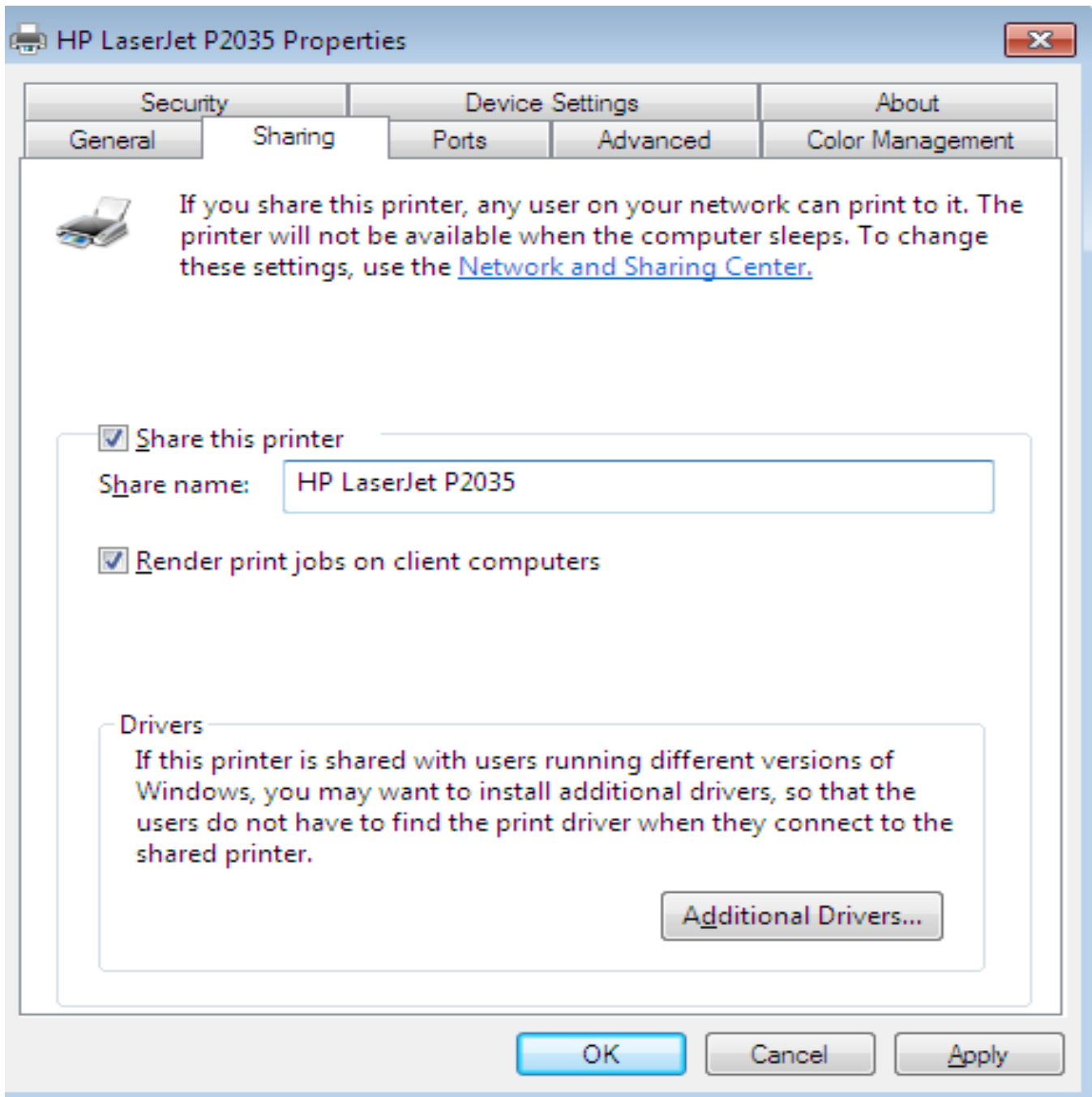


Fig. 3.3.21 Printer Sharing

- 6) After that we go Control Panel>Network & Sharing Center>Advanced Sharing and do the all the following things in Home, Private & Public Network.

Change sharing options for different network profiles

Windows creates a separate network profile for each network you use. You can choose specific options for each profile.

Home or Work ▼

Public (current profile) ▲

Network discovery

When network discovery is on, this computer can see other network computers and devices and is visible to other network computers. [What is network discovery?](#)

Turn on network discovery
 Turn off network discovery

File and printer sharing

When file and printer sharing is on, files and printers that you have shared from this computer can be accessed by people on the network.

Turn on file and printer sharing
 Turn off file and printer sharing

Public folder sharing

When Public folder sharing is on, people on the network, including homegroup members, can access files in the Public folders. [What are the Public folders?](#)

Turn on sharing so anyone with network access can read and write files in the Public folders
 Turn off Public folder sharing (people logged on to this computer can still access these folders)

File sharing connections

Windows 7 uses 128-bit encryption to help protect file sharing connections. Some devices don't support 128-bit encryption and must use 40- or 56-bit encryption.

Use 128-bit encryption to help protect file sharing connections (recommended)
 Enable file sharing for devices that use 40- or 56-bit encryption

Password protected sharing

When password protected sharing is on, only people who have a user account and password on this computer can access shared files, printers attached to this computer, and the Public folders. To give other people access, you must turn off password protected sharing.

Turn on password protected sharing
 Turn off password protected sharing

Fig. 3.3.22 Change Sharing Option

Printer Sharing on a Network (From Client PC)

- 7) First, do same thing of client PC from Control Panel>Network & Sharing Center>Advanced Sharing and do the all the following things in Home, Private & Public Network.

Change sharing options for different network profiles

Windows creates a separate network profile for each network you use. You can choose specific options for each profile.

Home or Work 

Public (current profile) 

Network discovery

When network discovery is on, this computer can see other network computers and devices and is visible to other network computers. [What is network discovery?](#)

- Turn on network discovery
- Turn off network discovery

File and printer sharing

When file and printer sharing is on, files and printers that you have shared from this computer can be accessed by people on the network.

- Turn on file and printer sharing
- Turn off file and printer sharing

Public folder sharing

When Public folder sharing is on, people on the network, including homegroup members, can access files in the Public folders. [What are the Public folders?](#)

- Turn on sharing so anyone with network access can read and write files in the Public folders
- Turn off Public folder sharing (people logged on to this computer can still access these folders)

File sharing connections

Windows 7 uses 128-bit encryption to help protect file sharing connections. Some devices don't support 128-bit encryption and must use 40- or 56-bit encryption.

- Use 128-bit encryption to help protect file sharing connections (recommended)
- Enable file sharing for devices that use 40- or 56-bit encryption

Password protected sharing

When password protected sharing is on, only people who have a user account and password on this computer can access shared files, printers attached to this computer, and the Public folders. To give other people access, you must turn off password protected sharing.

- Turn on password protected sharing
- Turn off password protected sharing

Fig. 3.3.23 Printer Properties

- 1) Press Windows Button+R
- 2) type “\\192.168.10.102” and press Enter

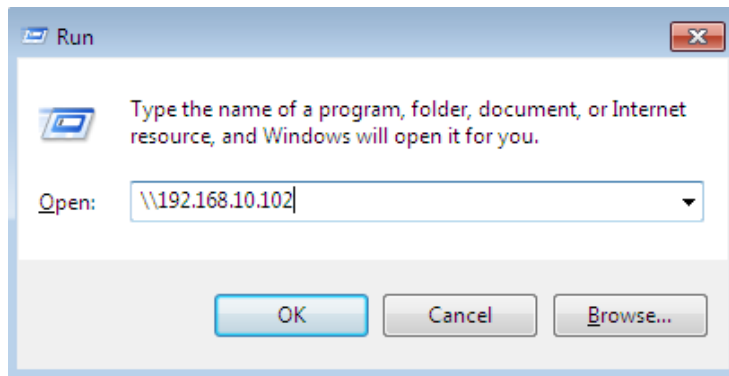


Fig. 3.3.24 Run Option

- 3) Then Click the right button and “Connect”

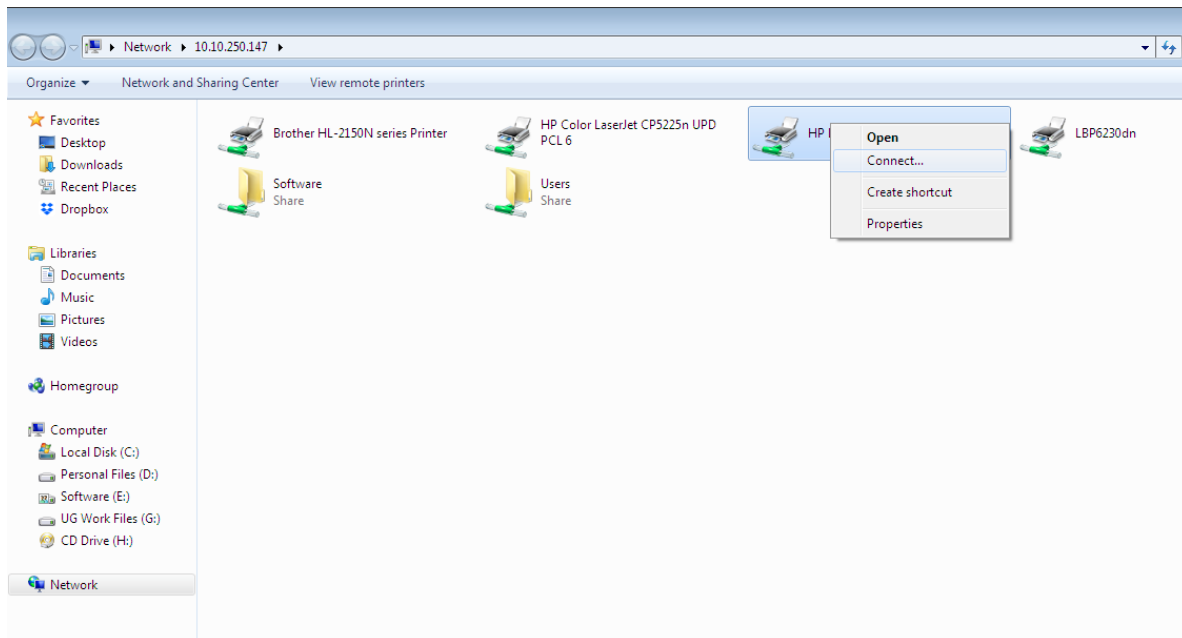


Fig. 3.3.25 Connect Printer

Step-10: Handover the Project.

Finally, we do the office-networking project and handover according to their requirement and get lots of experience.

3.4 Challenges

In today's world finding a job is very tough challenges. Now job seekers are more than job field. As Linux and MikroTik has also many job sector. But it only gives job those people who really deserve it. and of course it's the corporate world problem. There are more than 11,000 Linux related jobs now a day. and the percentage is growing every year. But having a good skill in Linux and MikroTik one can find a job in Linux and MikroTik. The demand of job in Linux and MikroTik is increase day by day. So it's a challenge to buildup one career in Linux and MikroTik. But the experience and skills help one to get a good job. After taking the internship I may have a Linux and MikroTik related job.

CHAPTER 4

Competencies and Smart Plan

4.1 Competencies Earned

Competencies Earned or learning outcome is a statement of what a learner is expected to know, understand or be able to do as a result of a learning process. Install and decommission of both network and server machines at two datacenters. The Student Association office funds many student Intern Learning Outcomes: Gathering and organizing information into an Internship Project Description: Learning Outcomes Install & Configure software and upgrades; Install, configure & test network Employer Services. Furthermore, consistent with the learning outcomes, the Internship On-Site Supervisor will provide an orientation concerning organizational policies and procedures.

4.2 Smart Plan

Many companies should have a smart plan to succeed. Originally, make a smart plan to make something simple. Its help to improve the future of the company.

4.3 Reflections

“Anis IT Corporation” is one of the renowned and fast growing IT in Bangladesh Established in 2017. The company has a very good training facility. It has been launching new and innovative idea in the Bangladeshi IT industry. The company gives various facilities such as Professional IT course training such as MS Office, Graphics Design, Hardware Engineering, Professional Networking, Cisco Certified Network Associate (CCNA R & S), MikroTik Certified Network Associate (MTCNA), Windows Server, Red Hat Certified System Administrator (RHCSA) and Red Hat Certified Engineer (RHCE) etc. Without these training facilities they also provide Networking & Server Support, IT Products supply, Domain & Hosting reselling, Corporate IT Training etc. It has more than team member to manage all that services.

Chapter 5

Conclusion and Future carrier

5.1 Discussion and Conclusion

I take my Internship in Anis IT corporation in IT sections. Its help us to improve my carrier. There are a lot of company in our country that have a lot of opportunity to work in computer networking I am proud for Anis IT corporation in IT section.

5.2 Scope for Future Career

I have a plan to study on the following topics in future I can work position in any organization in IT section. I work in the station is very hard working in my internship Period. I try to my best opportunity on the **Anis IT Corporation** in IT section. I think that I have more study in IT and I work the IT section in Future.

References

[1] [www.tutorialzonepdf.blogspot.com](http://tutorialzonepdf.blogspot.com) << <http://tutorialzonepdf.blogspot.com/2014/01/basic-computer-networking-bangla.html> >> last access on 15 July 2018, 10.20am

[2] www.pdfdrive.com << <https://www.pdfdrive.com/computer-networking-e24392328.html> >> last access on 25 July 2018, 12.33am

[3] About internship, Available at << <http://ashleydotson.blogspot.sg/2009/08/in-reviewthis-internship-has-been.html> >> last access on 30 July 2018, 03.55pm

APPENDICES

Appendices A: Internship Reflection

The primary goal of my internship in a way professional setting, the real solution to real-world problems is to apply the knowledge acquired in the classroom. In this internship its help to improve my skill and acknowledge this is the good for me.

Appendix B: Company Detail

Head Office Address:

192/2 (6th Floor), Middle Paikpara, Ansar Camp, Mirpur, Dhaka-1216

Branch Office Address:

426 (3rd Floor), Mukto Bangla Shopping Complex, Mirpur-01, Dhaka-1216

E-mail: anisbcse@gmail.com

Website: www.anisitcorporation.com

Mobile: 01923 897 035, 01614 097 486

Plagiarism Report

11/19/2018

Turnitin

Document Viewer

Turnitin Originality Report

Processed on: 19-Nov-2018 13:38 +06
ID: 1041791552
Word Count: 3495
Submitted: 1

153-15-6471 By Md. Mehidi Hassan

Similarity Index

27%

Similarity by Source

Internet Sources:	16%
Publications:	2%
Student Papers:	24%

[include quoted](#) [include bibliography](#) [excluding matches < 1%](#) [download](#)
[refresh](#) [print](#) mode:

5% match (student papers from 07-Apr-2018) ✕

Class: Article 2018
Assignment: Journal Article
Paper ID: [942500788](#)

4% match (Internet from 15-Mar-2014) ✕

<http://www.witsa.org>

4% match (student papers from 02-Apr-2018) ✕

Class: Article 2018
Assignment: Journal Article
Paper ID: [939740526](#)

3% match (Internet from 05-Apr-2014) ✕

<http://www.summerinternships.com>

3% match (student papers from 03-Apr-2018) ✕

Class: Article 2018
Assignment: Journal Article
Paper ID: [940334293](#)

2% match (Internet from 09-Nov-2018) ✕

<https://www.costainvest.org/en/real-estate-swot-analysis/>

1% match (Internet from 25-Nov-2015) ✕

<http://www.pharmaceutical-tech.com>

1% match (Internet from 04-Aug-2018) ✕

<https://www.roberthalf.com.hk/our-services/it-technology/help-desk-jobs>

1% match (Internet from 24-Jul-2016) ✕

https://www.turnitin.com/newreport_classic.asp?lang=en_us&old=1041791552&ft=1&bypass_cv=1

1/7