



DAFFODIL INTERNATIONAL UNIVERSITY
DHAKA, BANGLADESH
MAY 2019

**INTERNSHIP ON ISP SERVER CONFIGURATION ON LINUX,
MIKROTIK ,CISCO SWITCH, Wi-Fi PLATFORM & CAMBIUM
NETWORKS**

SUBMITTED

BY

Mst. TAFHIMA SADIKA

ID: 162-15-8112

This report presented in partial fulfillment of the requirements for the degree of Bachelor of Science in Computer Science and Engineering

Supervised By

MASUD RABBANI

Lecturer

Department of CSE

Daffodil International University

Co-Supervised By

AHMED AL MAROUF

Lecturer

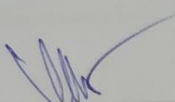
Department of CSE

Daffodil International University

APPROVAL

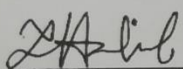
This internship titled "ISP SERVER CONFIGURATION ON LINUX, MIKROTIK, CISCO SWITCH, Wi-Fi PLATFORM & CAMBIUM NETWORKS", submitted by Mst. Tafhima Sadika, ID No: 162-15-8112 to the Department of Computer Science and Engineering, Daffodil International University has been accepted as satisfactory for the partial fulfillment of the requirements for the degree of B.Sc. in Computer Science and Engineering and approved as to its style and contents. The presentation has been held on 4 May 2019.

BOARD OF EXAMINERS



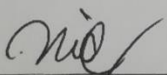
Dr. Syed Akhter Hossain
Professor and Head
Department of Computer Science and Engineering
Faculty of Science & Information Technology
Daffodil International University

Chairman



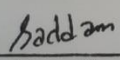
Md. Tarek Habib
Assistant Professor
Department of Computer Science and Engineering
Faculty of Science & Information Technology
Daffodil International University

Internal Examiner



Moushumi Zaman Bonny
Senior Lecturer
Department of Computer Science and Engineering
Faculty of Science & Information Technology
Daffodil International University

Internal Examiner



Dr. Md. Saddam Hossain
Assistant Professor
Department of Computer Science and Engineering
United International University

External Examiner

DECLARATION

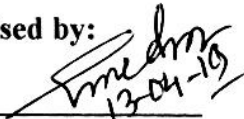
I declare that, this internship report is prepared by me, Name: Mst Tafhima Sadika ID No: 162-15-8112 to the department of Computer Science and Engineering, Daffodil International University. Under the supervision of **Masud Rabbani Lecturer, Department of CSE**, Daffodil International University. I also declare that neither this internship report nor any part of this internship report has been submitted elsewhere for award of any Degree or Diploma. I also declare that, I collect information from Daffodil Online Limited (DOL), Books and Internet.

Supervised by:



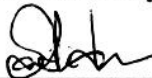
Masud Rabbani
Lecturer
Department of CSE
Daffodil International University

Co-Supervised by:



Ahmed Al Marouf
Lecturer
Department of CSE
Daffodil International University

Submitted by:



Mst Tafhima Sadika
ID: 162-15-8112
Department of CSE
Daffodil International University

ACKNOWLEDGEMENT

First, I express heartiest thanks and gratefulness to almighty God for His divine blessing makes us possible to complete the final year internship successfully.

I am grateful to **Kazi Mahbubul Alam, Manager of Daffodil Online Limited**. I am also grateful to **Mohammad Imran Hossain, System Admin (Network & Training) of Daffodil Online Limited**. Without their continuous support I can't continue my internship in the company. Other members of the company helped me for doing my internship.

I really grateful to **Masud Rabbani**, Lecturer, Department of CSE Daffodil International University, Dhaka. Knowledge & keen to interest of supervisor in the field of "**Network Administration**" to carry out this internship. His patience, guidance, constant and energetic supervision, constructive criticism, valuable advice, help to how is professional life and correcting them at all stage have made it possible to complete this internship.

I would like to thanks **Dr. Syed Akhter Hossain, Professor and Head, Department of CSE**, for his kind help to finish my internship and also to other faculty member and the staff of CSE department of Daffodil International University.

I would like to thank entire course mate in Daffodil International University, who took part in this discuss while completing the course work.

Finally, I must acknowledge with due respect the constant support and patients of parents.

ABSTRACT

As a student of CSE, I have completed my internship report in DOL. **ISP SERVER CONFIGURATION ON LINUX, MIKROTIK, CISCO SWITCH AND Wi-Fi PLATFORM& CAMBIUM NETWORKS**. The internship report is proposed for the completion of BSc in computer science & engineering. I develop myself to administration & security for that reason I chose DOL . Its give me the space to learn about Linux configuration , Cisco switch, NAT ,Mikro-Tik ,various types of sever, bandwidth management etc.Linux is free OS which is easily learn to security ,sever ,command etc. Mikro-Tik is vary popular router in Bangladesh. We can do using Mikro-Tik router in static,DHCP,PPPoE configuration to step by step. In this report I can describe step of configure in details.

TABLE OF CONTENTS

CONTENTS

	PAGE
Acknowledgement	II
Abstract	IV
List of table	V-VI
List of figure	VI-VII

CHAPTER

CHAPTER 1: INTRODUCTION 1-3

1.1 Introduction	1
1.2 Motivations	1
1.3 Internship Objectives	1
1.4 Introduction to the Company	2
1.5 Report Layout	3

CHAPTER 2: ORGANIZATION 4-6

2.1 Introduction	3
2.2 Product and Market Situation	3
2.3 Target Group	4
2.4 SWOT Analysis	4
2.5 Organizational Structure	4

CHAPTER 3: TASK , PROJECT S AND ACTIVITIES 6-31

3.1 Daily Task and Activities	6
3.2 Events and Activities	7
3.3 Project Task and Activities	7
3.4 Mikro-Tik Router	8
3.5 Router OS	8
3.6 Features	9
3.7 Mikro-Tik structure	9

3.8 Mikro-Tik router configuration	10
3.9 PPPoE in Mikro-Tik	17
3.10 PPPoE Configuration	17
3.11 Cambium Networks	20
3.12 Types of Cambium Networks	20
3.13 Cambium Networks -routing mode Configuration	20
3.14: Cisco switch	
3.15: Linux	26
3.16: Installing Linux	26
3.17: Challenges	30
Chapter 4: Capability and Smart Plan	31
4.1 Capability gain	31
4.2 Smart Plan	31
4.3 Reflections	31
CHAPTER 5: Conclusion and Future Career	
5.1 Discussion and Conclusion	32
5.2 Scope for Further Career	32
REFERENCES	33
APPENDICES	34-35

LIST OF FIGURES

FIGURES

Figure 2.1: Show the organization of daffodil online ltd	4
Figure 3.1: Mikro-Tik Router	8
Figure 3.2: Mikro-Tik router structure	9
Figure 3.3: Screenshot reset Mikro-tik Router	10
Figure 3.4: Screenshot interface setting in Mikro-Tik	11
Figure 3.5: Screenshot IP address set up LAN & WAN in Mikro-Tik	11
Figure 3.6: Screenshot DNS set up in Mikro-Tik	12
Figure 3.7 : Screenshot Firewall NAT in Mikro-Tik	13
Figure 3.8: Screenshot gateway IP assign in Mikro-Tik	13
Figure 3.9: Screenshot Show Bridge in Mikro-Tik	14
Figure 3.10: Screenshot Create two Bridge in Mikro-Tik	14
Figure 3.11: Screenshot set up mangle option in Mikro-Tik	15
Figure 3.12: Screenshot queue setting in Mikro-Tik	16
Figure 3.13: Screenshot upload & download rate in Mikro-Tik	17
Figure 3.14: Screenshot PPPoE WAN set up in Mikro-Tik	17
Figure 3.15: Screenshot PPPoE server binding in Mikro-Tik	18
Figure 3.16: Screenshot Profile create in Mikro-Tik	18
Figure 3.17: Screenshot PPP secrets to password in Mikro-Tik	19
Figure 3.18: Screenshot Connect PPPoE in Mikro-Tik	19
Figure 3.19: Screenshot IP address set up in PC	20
Figure 3.20: Screenshot Ping network address .	21
Figure 3.21: Screenshot Log in page in cambium network	21
Figure 3.22: Screenshot Dashboard cambium network	22
Figure 3.23: Screenshot System Configuration in cambium network	22
Figure 3.24: Screenshot VLAN set up in cambium network	23
Figure 3.25 Screenshot Edit WLAN in cambium network	23

Figure 3.26: Screenshot Routing mode in cambium network	24
Figure 3.27: Screenshot DHCP set up in cambium network	24
Figure 3.28: Screenshot WLAN set up in cambium network	25
Figure 3.29: Screenshot VM virtual box installation in Linux	27
Figure 3.30: Screenshot Create a virtual machine in Linux	28
Figure 3.31: Screenshot Select Linux and centOS 64bit in Linux	29
Figure 3.32: Screenshot Name & Location set up in Linux	30
Figure 3.33: Screenshot Customize Hardware in Linux	30

CHAPTER 1

Introduction

1.1 Introduction

ISP server configuration of Linux and MikroTik platform, Cisco switch, Wi-Fi router configuration & know about Cambium networks this is the main goal of my internship program is to prepare myself as a skilled person in professional. So internship is very essential for me. I want to achieve quite special quality to prove myself. It covers advanced skills for the Linux professional that. This goal includes the ability to manage a running server and configuring Linux with clear learning of services to be used. It covers basic skills for the Linux professional. Banking depends on server system, ATM Technology (Switching Software), Banking Software, Debit Card, Credit Card, Online Transaction, international card. Every business and e-commerce today has much to do with software-based communication, internet technology is also a very useful server, by using this system we can operate various types of services.

1.2 Motivation

I am now continuing my study in Computer Science and Engineering in that case I realize that practical knowledge in our working life must be important. Textbook also has to make a living in the future.

At the time I have found to learn Linux, Mikro-Tik router, Cisco switch, Cambium networks to develop myself in network sector to bring me better service. My strength generally understands the situation and solve it smartly & quickly.

1.3 Internship Objectives

Linux operating system is one open source operating system. Actually Linux operating system used for server configuration. Mikro-Tik router is OS of Mikro-Tik router Board hardware. That's necessary features - route, firewall, bandwidth management, wireless access point, hotspot gateway, VPN server and more server, & also know Cisco. Coordinating work experience with academic training.

1.4 Introduction to the Company

DOL delight another popular ISP in Bangladesh. They are built in 2002. In this past year they client helping every time. They have own fiber optic server. They all time use latest version of technology and also upgrading the service. they have all are expert staff, strong professional management to survive any kind of problem. On the day of globalization, DOL will be conducting the most challenging and demanding IT professional course and training. Daffodil Online Limited (DOL) is one of the fastest ISP's in Bangladesh to connect everyone, anywhere, all the time to deliver high-quality Information and Communication Technology (ICT) services at a reasonable price. DOL uses the latest technology and upgrade services wherever necessary with a very strong, certified and associated professional engineering and management team

1.5 Report Layout

Chapter (1) I represent objective of internship, Motivation of internship and Introduction to the company.

Chapter (2) I represent the methodology of my internship. information about. Also included about how did perform the internship works, about the company, what are the IT service offered in DOL and what are the roles of in jobs market of Linux, Cisco switch & wi-fi router.

Chapter (3) I represent about daily task and activities, Events and Activities and Challenges.

Chapter (4) I represent is capability gain, Smart Plan, Reflections.

Chapter (5) I represent Conclusion and Future Scope. I discuss Future Scopes and write conclusion.

CHAPTER 2 ORGANIZATION

2.1 About the Company

DOL delight another popular ISP in Bangladesh. They are the most skillful & earliest ISP organization with vary much helpful with client. They are proud to be achieved that their outlook and unformal promising is there future to develop this company. It is different types of IT provider and training center, and our outlook for an equally promising future is even more exciting. Accomplished, they're even more excited about their future prospects

They are built in 2002. In this past year they client helping every time. They have own fiber optic server. They all time use latest version of technology and also upgrading the service. they have all are expert staff, strong professional management to survive any kind of problem. Ref [1];

2.2 Product and Market Situation

DOL delight another popular ISP in Bangladesh. They are the most skillful & earliest ISP organization with vary much helpful with client. They are proud to be achived that there outlook and unformal promising is there future to develop this company. It is different types of IT provider and training center, and our outlook for an equally promising future is even more exciting. DOL also offers various IT and professional training service. Here the given below

- **IT Services**

1. ISP Setup, Administration and configuration with Linux.
2. ISP Setup , Administration and configuration with Mikro-tik.
3. Cisco Switch, wi-fi router configuration and cambium networks.
4. Red Hat Certified Security Specialist (RHCSS)

2.3 Target Group

DOL delight another popular ISP in Bangladesh. They are the most skillful & earliest ISP organization with vary much helpful with client. They are proud to be achieved that there outlook and unformal promising is there future to develop this company. It is different types of IT provider and training center .

2.4 Strength weaknesses opportunities & Threats Analysis

This is the business approach in any kind of location to develop skill

- **Strengths:** Contact each other to solve problem, collect information also establish e-business.
- **Weaknesses:** Understand the market, understand the market which one is best .
- **Opportunities:** Some product are specific location need too much so there the option to chose product
- **Threats:** Change status , media coverage .

2.5 Organizational Structure

Here the Organizational structure of Daffodil Online Limited in fig 2.1: Ref [1];

Chairman
Managing Director
General Manager
CEO
Manager
Deputy Manager
Sr. Assistance Manager
Assistance Manager
Senior Officer
Officer
Officer Staff

Figure 2.1: Organizational Structure of DOL.

CHAPTER 3

Tasks, Events and Activities

3.1 Daily Tasks and Activities

Month - 1: I have learned and observed the following tasks during the 1st month of internee on DOL:

- Study about Network peripheral of Network and ip .
- Study basics concept of router.
- Discuss different types router.
- Know about IP address
- Routing configuration and how router works.
- Know about Mikro-Tik router.
- Static routing configuration.
- Dynamic routing configuration.

Month - 2: I have learned and observed the following tasks during the 2nd month of internee on DOL:

- Essential routing.
- PPPoE configuration.
- NTP configure.
- Local ISP configuration.
- Maintenance routing protocols.
- WI-FI configure.
- Bridge mood configure.

Month – 3: I have learned and observed the following tasks during the 3rd month of internee on DOL:

- Cisco switch & router configuration
- Network cabling system
- Routing protocols.
- IPV6 basic and configuration.
- Know about cambium networks.

Month – 4: I have learned and observed the following tasks during the 4th month of internee on DOL :

- Linux addition & Installation.
- Modify the partition.
- Know about mounting and RPM.
- Learn RAID, LVM, Boot and Grub level
- Linux system administration
- Know about FTP , NFS, WEB, Samba ,DHCP,DNS server .
- NIS configuration
- Securing with Iptables .
- Learn Syslog server
- Automate and Schedule system administration tasks.
- Enterprise Linux server monitoring (cacti, squint, Wireshark, MRTG)

3.2 Events and Activities

- Control PC & computer system.
- Set up user & password.
- Correction servers and routers.
- Correction LAN and switches.
- Professional in networking problem.
- High teach in networking support.
- Everyday admin will take care using data passing
- Easily Store data in Cambium device using cloud.

3.3 Project Task and Activities

Network:

A network is a combination of computers, servers network device many other peripherals device which is connected each other to sharing the information or data etc .

Networks are five types:

1. Local area network (LAN)
2. Metropolitan area network (MAN)
3. Wide area network (WAN)
4. Wireless
5. Inter network (Internet)

ISP: An internet service provider (ISP) is a system that provides many types of internet access ,use or assistance service .Internet service providers can be organized in different forms such as commercial ,community owned ,non profit, or otherwise private ownership.

Different types of ISP connections

- Dial-up .
- Digital subscriber line (DSL)
- Cable broadband.
- Fiber optic broadband.
- Wi-Fi broadband.
- Satellite and mobile broadband.
- Dedicated leased line.

Mikro-Tik Routers That's the hardware router board OS . It can be installed on a computer with all basic feathers to route firewall, IP address gateway DNS server ,PPPoE server etc.

Router: A router is a network device which is forward data to computer. Router operate the traffic directing function on the internet.

Wi-fi: Wi-Fi is the wireless network technology which uses radio waves to operate high speed internet and network connection.

IP Address: IP address which is internet protocol address. Network use the IP address which is assign on protocol to communicate and help to data passing.

Function: IP address has two function that call host and another is network.

3.4 MikroTik Router

Mikro-Tik hardware which is basically use for router. It is so much reasonable price to other router which is various type of uses . In any company take bandwidth in main router than it given by other mikro-tik router.Its using in LAN, switch hotspot etc for the user to data sharing.

Mikrotik Router Rb2011UiAS:

Mikrotik Router Rb2011UiAS has most feathers and interface from all our wireless router .It has 600MHz 70K network processor.128mb RAM,SFP cage , 5 GB LAN ports and Ethernet ports. 2,4Ghz 802.11 wireless.RJ45 serial ports and micro USB port.It is als desktop enclosure, two indoor antennas for wireless power sully and touch screen LCD panel in Fig (3.1)Ref [2];



Figure 3.1: Image of Rb2011UiASMikrotik Router

3.5 Router OS

The Mikro-tik is an OS which is used for router. Any company use it for router because of its cost reachable It at the same time connect 10 pc in one IP address. It can also using bridge ,firewall, DHCP also using hotspot . It connect with switch ,data passing to client very smoothly.

3.6 Features

Router OS base many apps ISP use. Here the object

- It using like a router.
- Using bridge or switch .
- Bring a client –server PPPoE.
- Bring VPN.
- Bring the rules for the Firewall.
- Bring service DHCP Server.
- Bring hotspot system based on wi-fi & captive portals.
- Managing bandwidth is very easy.
- Interface with easy GUI.
- Easy management.

3.7 How to be a MikroTik Configuration:

Mikro-Tik use three layer which is physical layer,data link layer,network layer.when Mikro-Tik install than we use winbox to set up ip address ,gateway, DNS,NAT,bridg, firewall etc .Here are three types of routing there is static,DHCP, PPPoE.Mikro-Tik router using fast and simple GUI in Fig (3.2)

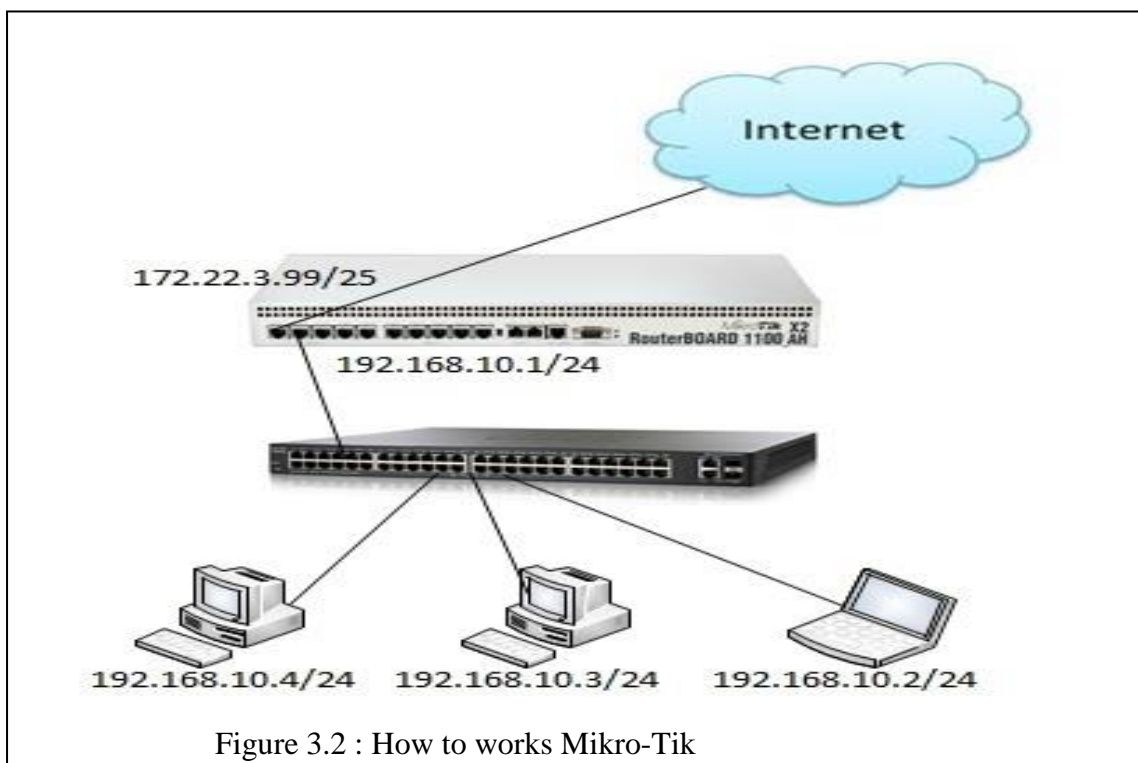


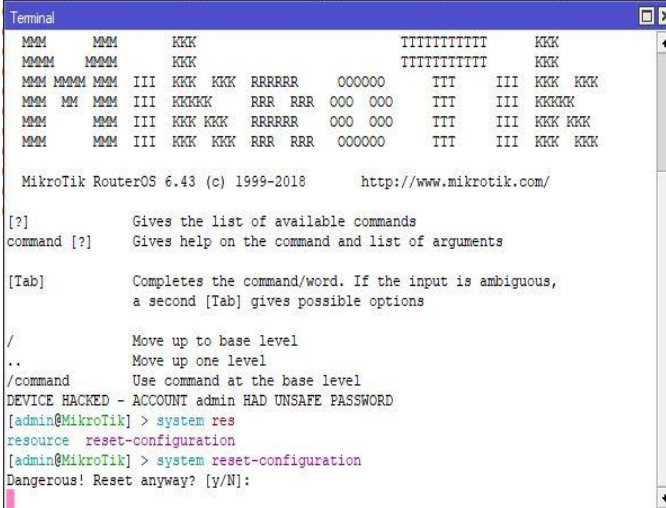
Figure 3.2 : How to works Mikro-Tik

3.8 Mikro-Tik Router Configuration :

Mikro-tik Router OS Installed. Winbox Software installed. PC with windows operating system installed and RJ45 cables. Then rest Mikro-tik router in Fig (3.3) Ref [4].

Step 1:

Ping> system reset-configuration> Enter .



```
Terminal
MMM   MMM   KKK           TTTTTTTTTT   KKK
MMMM  MMMM  KKK           TTTTTTTTTT   KKK
MMM MMMM MMM III KKK KKK RRRRRR  OOOOOO   TTT   III KKK KKK
MMM MM  MMM III KKKKK  RRR RRR  OOO OOO   TTT   III KKKKK
MMM   MMM III KKK KKK  RRRRRR  OOO OOO   TTT   III KKK KKK
MMM   MMM III KKK KKK  RRR RRR  OOOOOO   TTT   III KKK KKK

MikroTik RouterOS 6.43 (c) 1999-2018      http://www.mikrotik.com/

[?]          Gives the list of available commands
command [?]  Gives help on the command and list of arguments

[Tab]       Completes the command/word. If the input is ambiguous,
            a second [Tab] gives possible options

/           Move up to base level
..         Move up one level
/command   Use command at the base level
DEVICE HACKED - ACCOUNT admin HAD UNSAFE PASSWORD
[admin@MikroTik] > system res
resource reset-configuration
[admin@MikroTik] > system reset-configuration
Dangerous! Reset anyway? [y/N]:
```

Figure 3.3: Screenshot Reset Mikro-Tik Router.

Add interface LAN & WAN . select IP to define the LAN & WAN in Fig (3.4) Ref [7]

Step 2:

IP>add ip.apply>ok

Define IP Setting up process. Process: IP click + IP address + (plus sign click) + add IP + apply ok

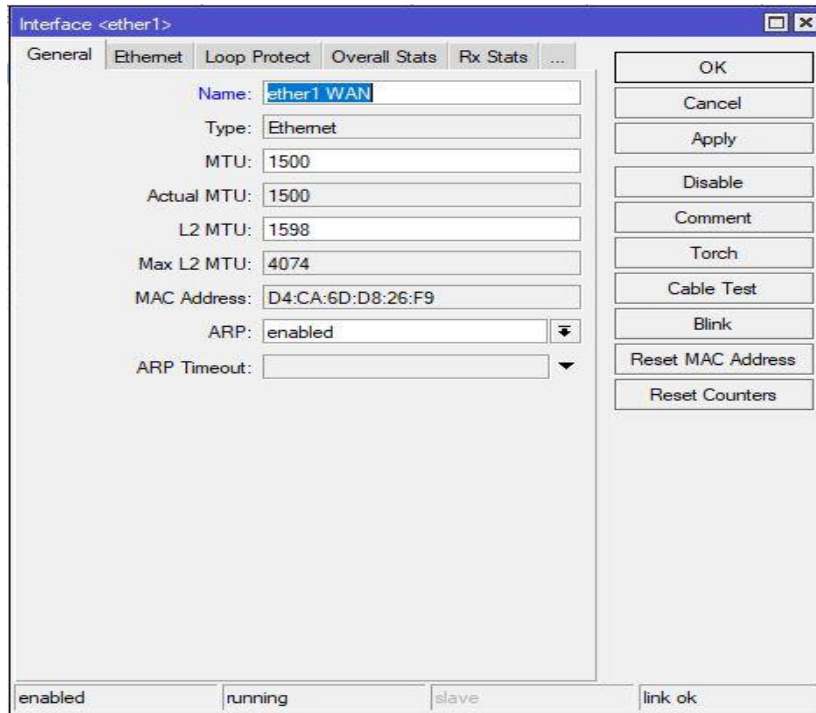


Figure 3.4: Screenshot interface Setting.

IP address select class B for LAN and WAN address select which is define easily.Fig (3.5)

Step 3:

IP>address add> address select >interface> apply>ok



Figure 3.5: Screenshot IP address set up LAN & WAN.

PC IP remove and select ip address , gateway ,DNS server etc . and than apply to IP address .Fig (3.6) Ref [5]

Step 4:

IP>DNS IP>apply>ok

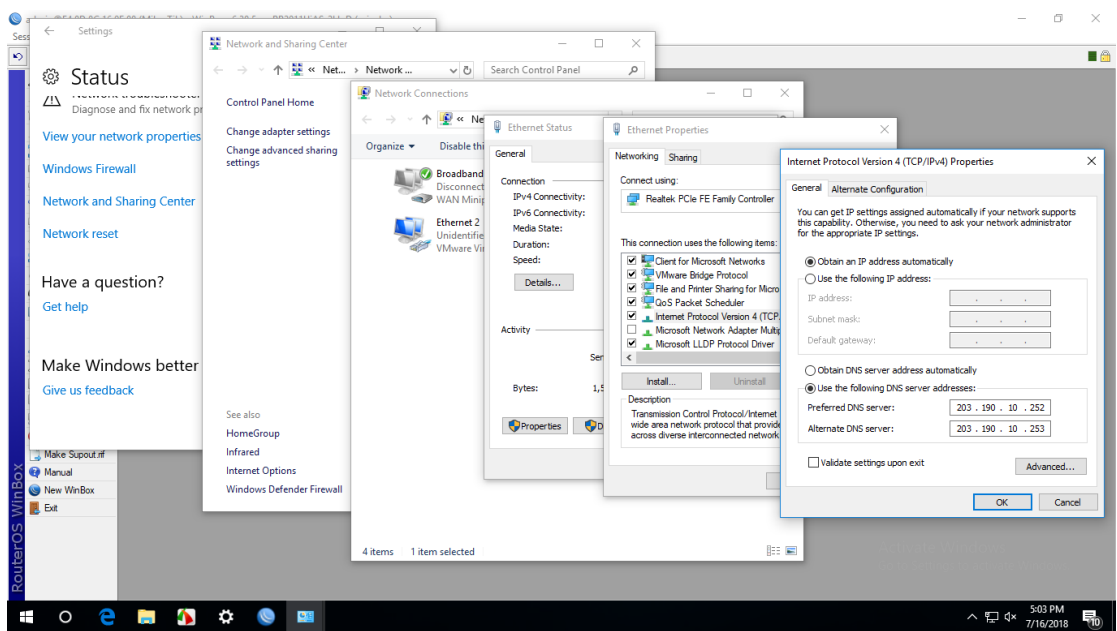


Figure 3.6: Screenshot DNS set up

Firewall first setting is NAT setup than advance select to pre-routing and than select action to masquerade in Fig (3.7)

Step 5:

IP>firewall>NAT>action>masquerade>apply>ok .

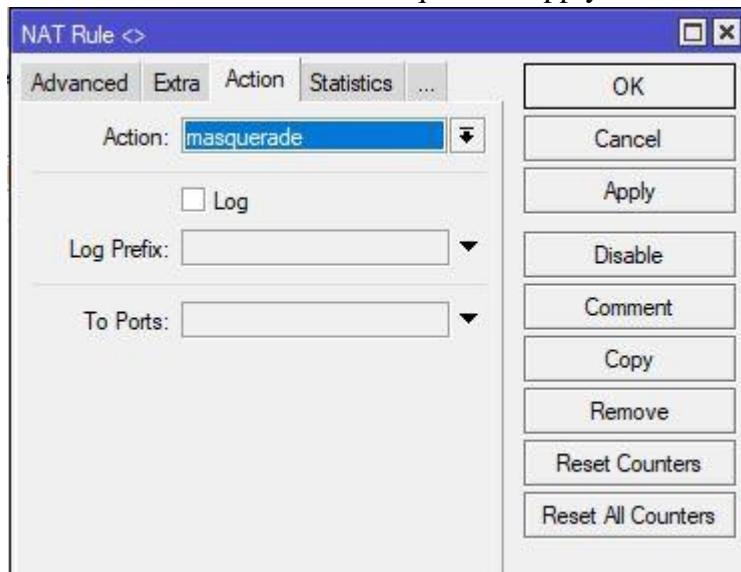


Figure 3.7 : Screenshot Firewall NAT

After gateway set up the process is assign.Fig (3.8)

Step 6:

IP> route>gateway ip>apply >ok

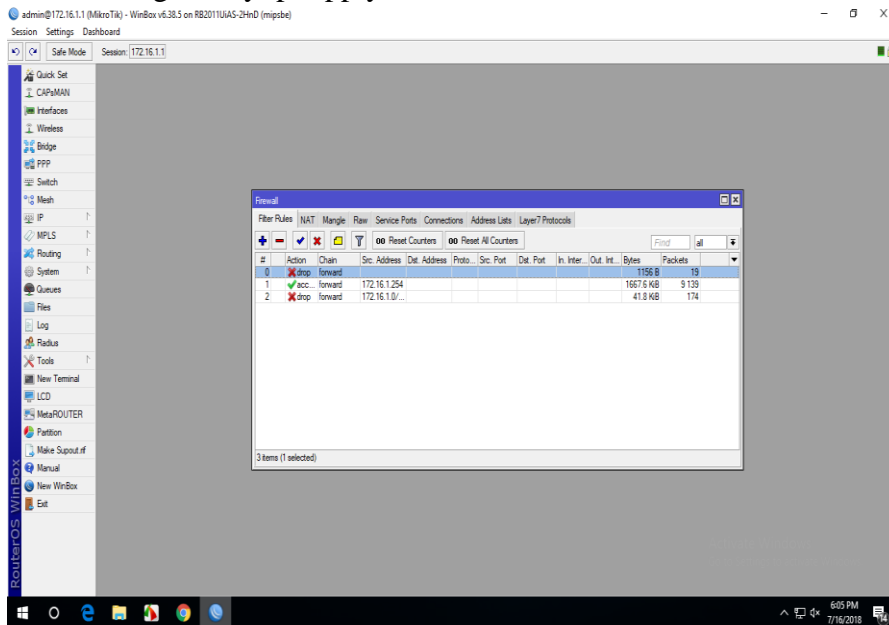


Figure 3.8: Screenshot Gateway IP Assign.

Now create bridge which is connect two or many other pc in only one ip address which easily share data passing in same network .Fig (3.9)Ref [9];

Step 7:

Process:

Bridge>Ports> “+” > (bridge n, here n=1,2,3....)> Apply>ok

IP > DHCP Server > DHCP Setup > bridge 1> following Next Option



Figure 3.9: Screenshot Bridge

Create ports to show the two bridge.Fig (3.10)

Step 8:

Bridge>ports>add>ip address >apply>ok

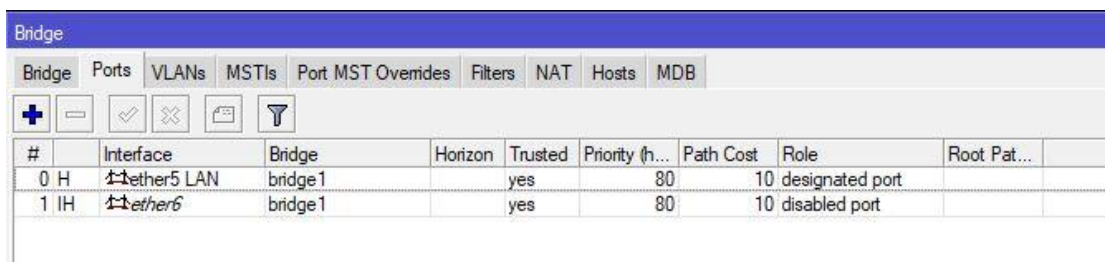


Figure 3.10: Screenshot Create Two Bridge

Define Mangle Option to help queue to select source address & destination address.Fig (3.11)

Step 9:IP > Firewall > Mangle> Files >Address.rsc>> New Terminal > Import Address.rsc

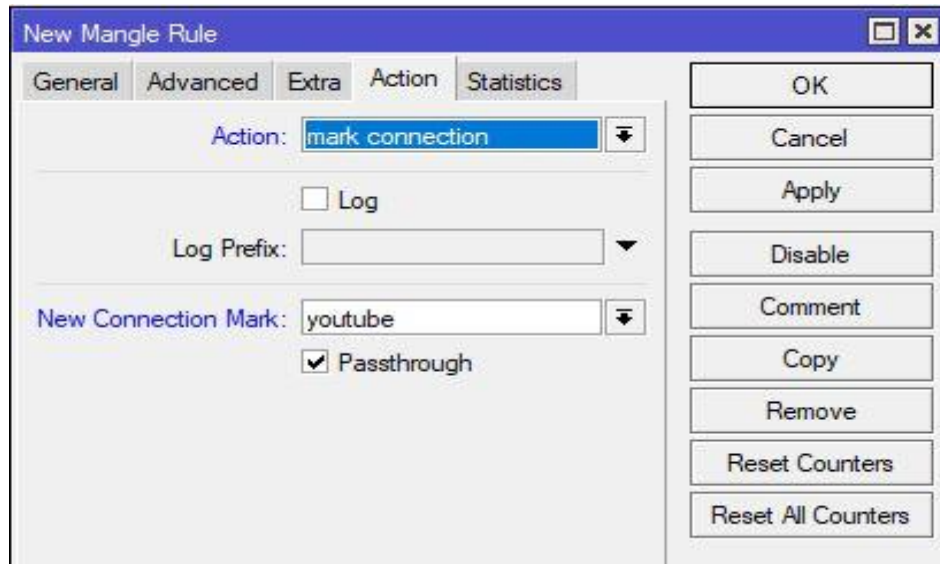


Figure 3.11: Screenshot set up mangle option

To set up web browser ,rate, classifier & limit for how much to use data to select this one by one .Fig (3.12)

Step 10 :

Process

IP > Firewall > Address list> Mangle>“ + “ > Action > Mask connection > New connection Mask Name (Youtube) > Advance > select theYoutube-IP > Apply > ok

General > Connection mask >youtube> Apply > ok

Action > Mask Packet >Youtube> Apply > ok

Queues > Queue Types >“ + “ > Type Name (Download) > kind > PCQ > Select rate > Apply > ok

Queues > Queue Types >“ + “ > Type Name (Upload) > kind > PCQ > Select rate > Select the Classifier src.Address> Apply > ok

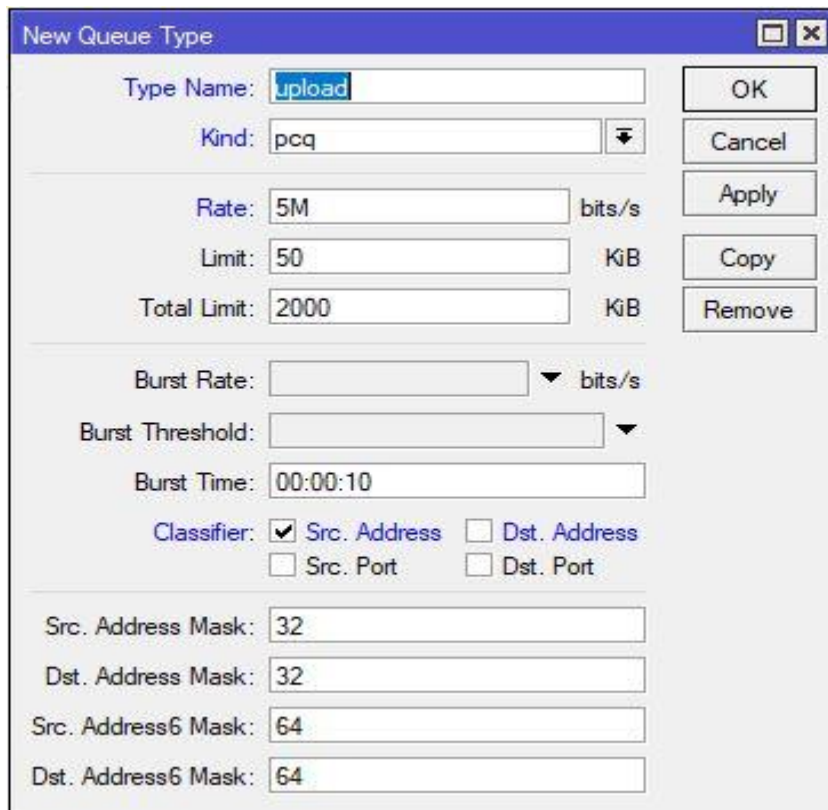


Figure 3.12: Screenshot Queue Settings

Here we show how much Mbps are uses on youtube browser .fig (3.13)

Step 11:

Define Upload and Download Rate

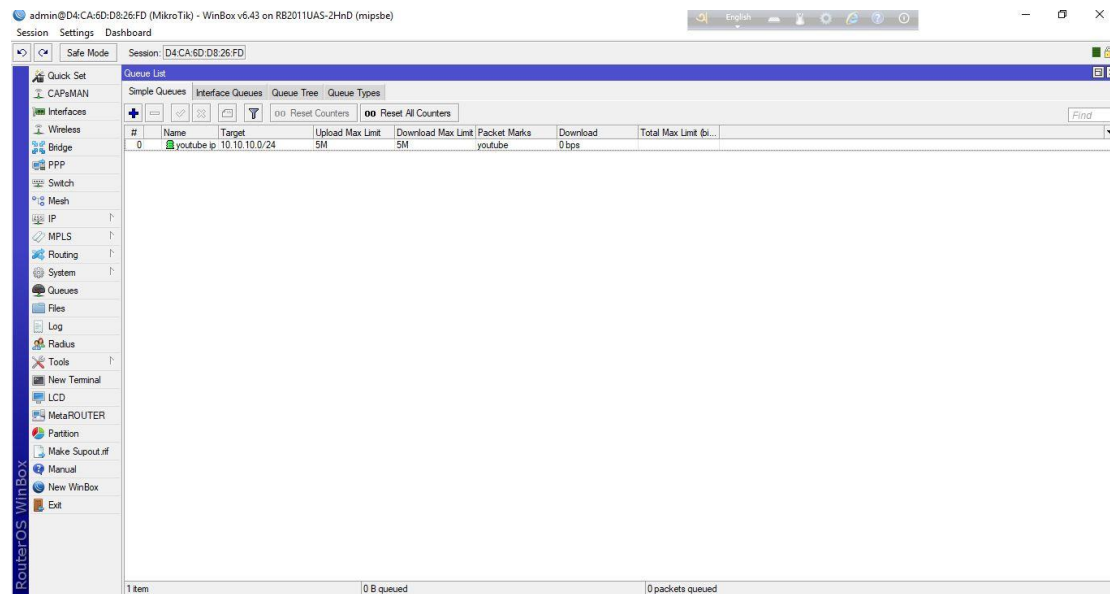


Fig 3.13: Screenshot Upload & Download rate .

3.9 PPPoE

PPPoE full meaning is point to point protocol over ethernet . It is antithetic profiles .It is used mainly DSL service where user are use free in over to ethernet

3.10: PPPoE Configuration:

First we will configure interface that is connected to WAN. Than pc ip address delete & select which we select for PPPoE. Fig (3.14) Ref [4]

Step 1:

Queue>address >queue type>apply >ok

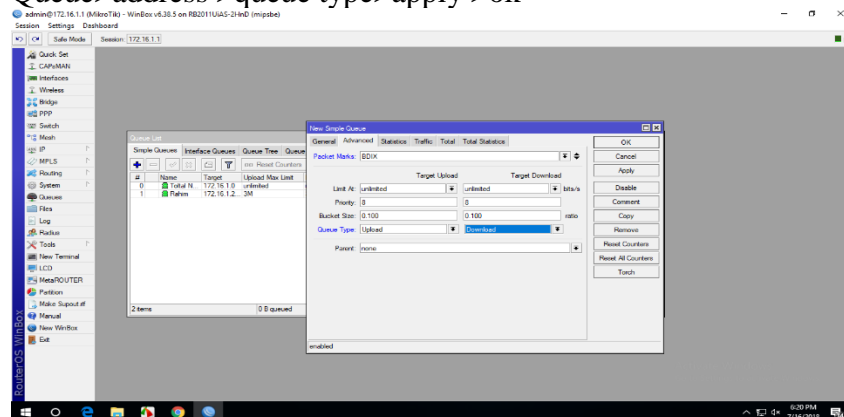


Figure 3.14: Screenshot PPPoE WAN set up

Now one interface is configured and connected to WAN. Now we will configure second interface for our local network in Fig (3.15)

Step 2:

PPP> PPPoE sever binding> add> profiles>apply>ok

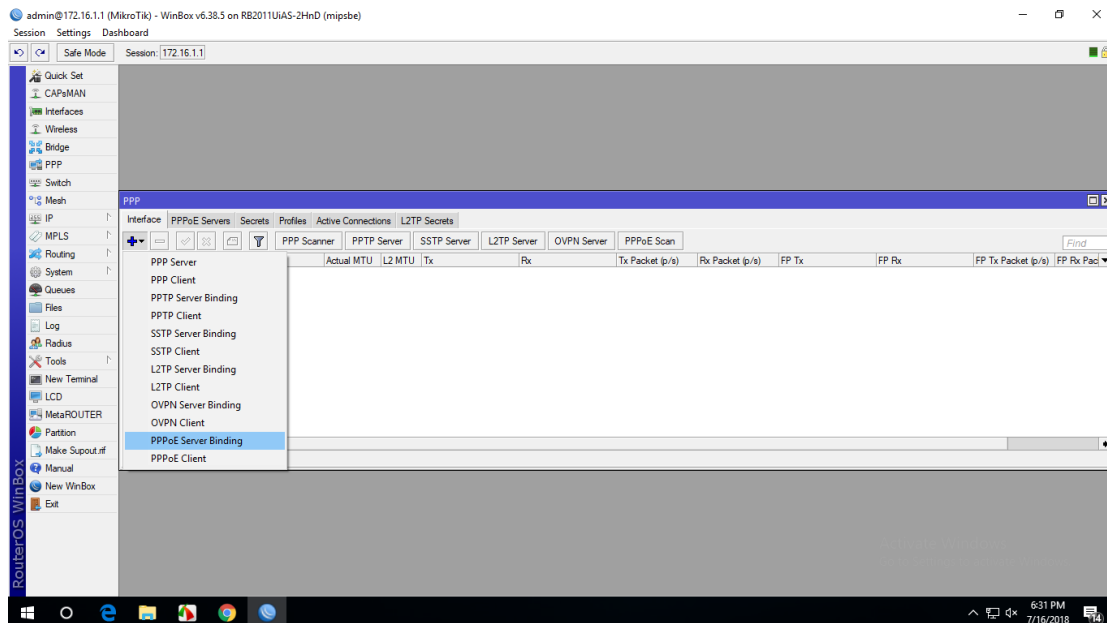


Figure 3.15: Screenshot PPPoE server Binding

Now we will create a profile that will be used by different users. Go to the main PPP window, go to Profiles tab, here you will see two profiles by default, don't do anything to these default profiles, create a new profile by pressing the PLUS sign.Fig (3.16)

Step 3 :

FTP>name>local address >apply >ok

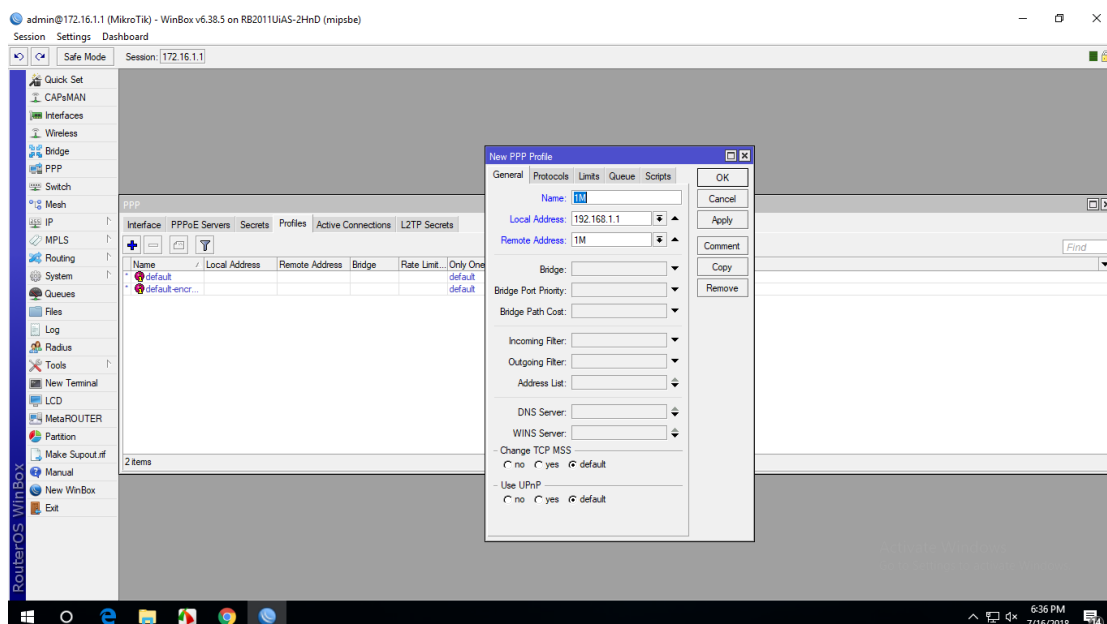


Figure 3.16: Screenshot profile create

My PPPoE Server Setup is complete, however Internet right now will not be working at any client. Now we will setup NAT and ROUTE and DNS so that internet will also work on the clients. Fig (3.17)

Step 4:

IP > Firewall. >NAT > add >FIREWALL rule> chain=srcnat , src.address= () >action=masquerade> Apply>OK.

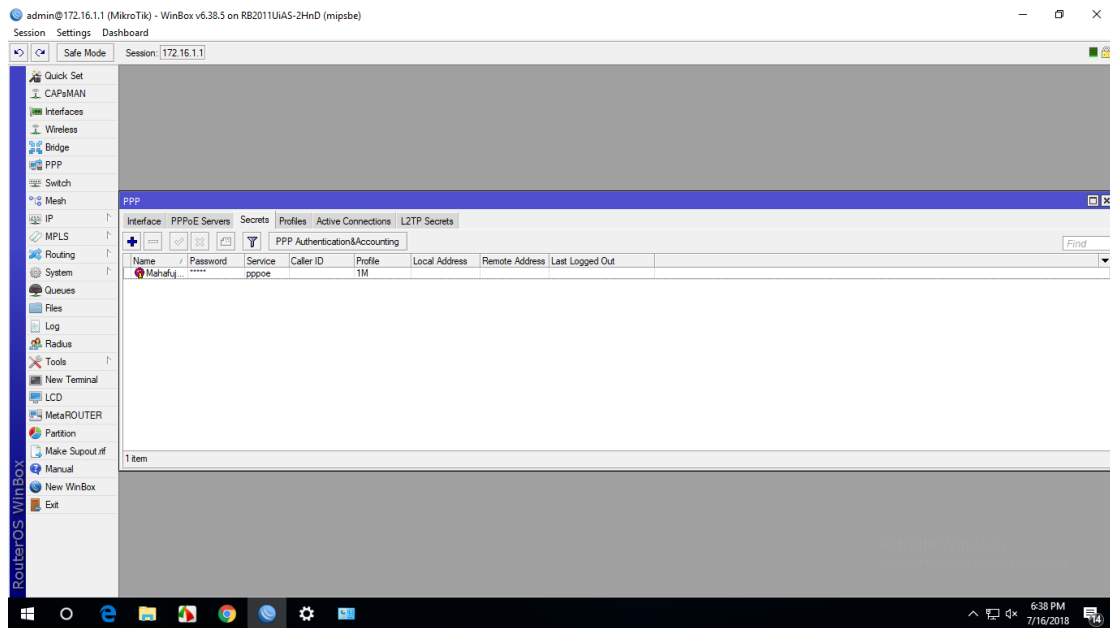


Figure 3.17: Screenshot PPP secrets to Password

Now the last step DNS server on Mikro-Tik router and provide by my ISP. Now our PPPoE server setup with profile and everything will worked .Fig (3.18)

Step 5: IP > DNS> settings > primary and secondary DNS Server's IP >apply >ok.

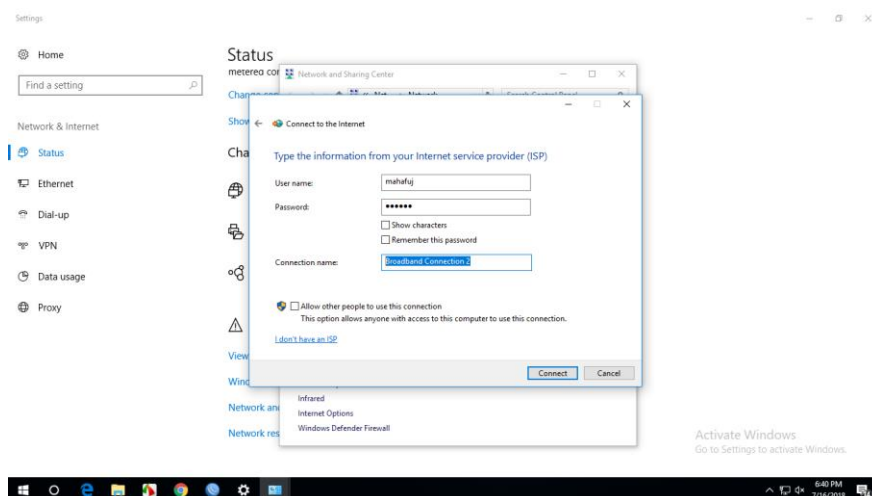


Figure 3.18: Screenshot Connect PPPoE.

3.11 Cambium Device: Cambium networks delivers strong, high conduct ,available wireless broadband also restore data and residentiary access application. Ref [3];

3.12 Types of Cambium networks configuration:

- AP mode
- Routing mode

AP mode : AP mode define that I have no choice to IP address . Name and password only change this mode. IP address give in AP mode which is given in Mikro-Tik.

Routing Mode : Routing mode define that I have choice to IP address and also change name & password .

3.13 How to configuration Cambium Networks in two types:

AP: Go to setting and change the IP address & subnet mask than we ping the IP address. Fig (3.19)

Step 1: Default IP >User name > password >ok

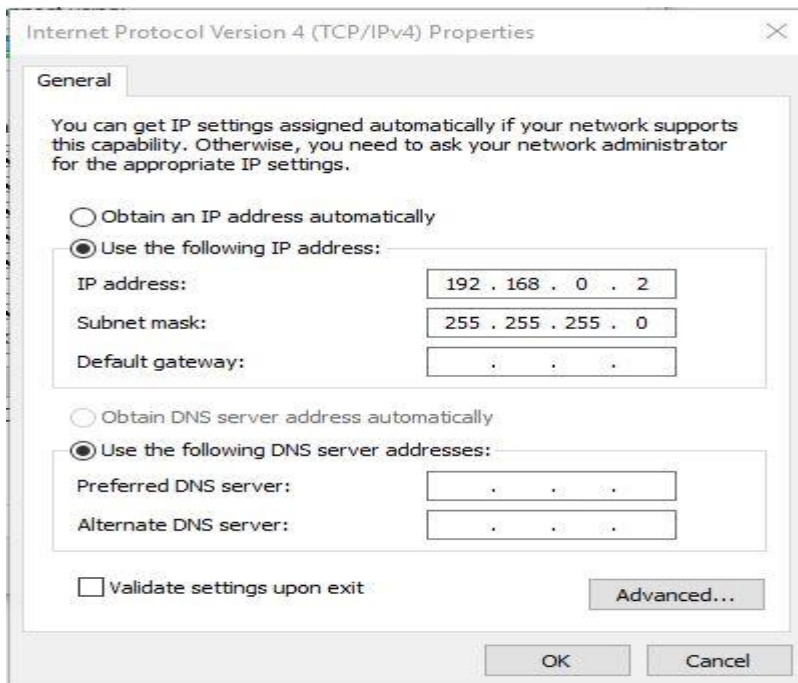
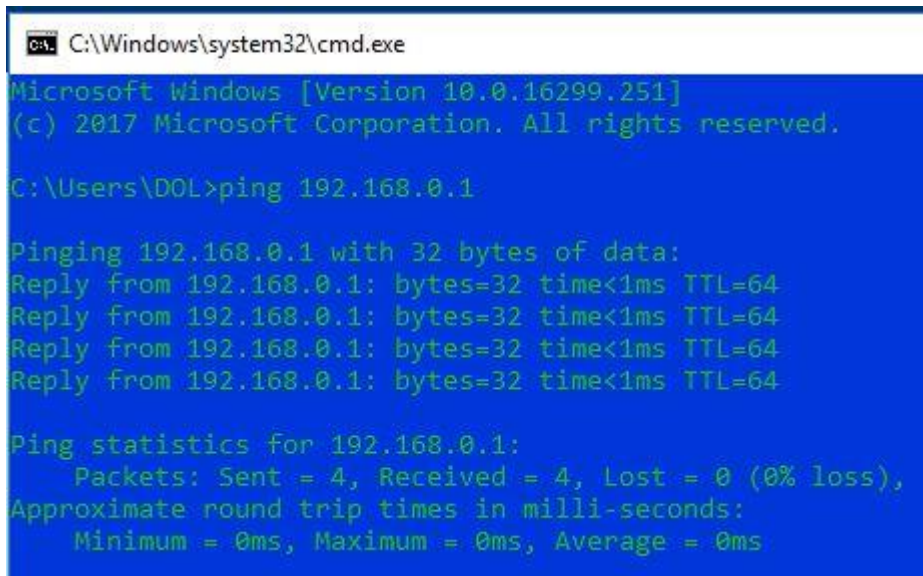


Figure 3.19: Screenshot IP address set up

When ping IP address successful than ap route is configure in cambium networks.

Fig (3.20)

Step 2: Browser>pc IP>ok than ping network address >successful



```
C:\Windows\system32\cmd.exe
Microsoft Windows [Version 10.0.16299.251]
(c) 2017 Microsoft Corporation. All rights reserved.

C:\Users\DOL>ping 192.168.0.1

Pinging 192.168.0.1 with 32 bytes of data:
Reply from 192.168.0.1: bytes=32 time<1ms TTL=64
Reply from 192.168.0.1: bytes=32 time<1ms TTL=64
Reply from 192.168.0.1: bytes=32 time<1ms TTL=64
Reply from 192.168.0.1: bytes=32 time<1ms TTL=64

Ping statistics for 192.168.0.1:
    Packets: Sent = 4, Received = 4, Lost = 0 (0% loss),
    Approximate round trip times in milli-seconds:
        Minimum = 0ms, Maximum = 0ms, Average = 0ms
```

Figure 3.20: Screenshot ping Network address

Cambium network log in page we log in by admin and password and then sign in

Fig (3.21)

Step 3: admin>password>sign in

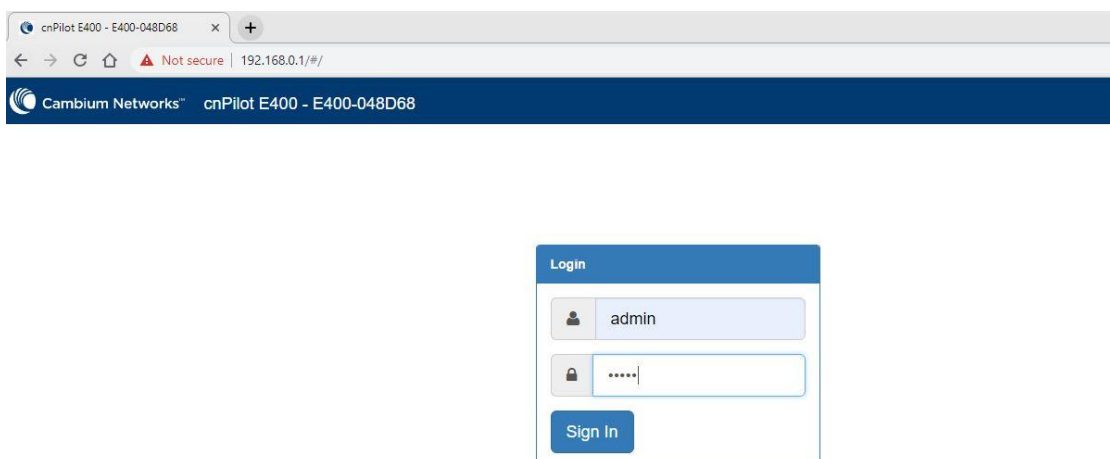


Figure 3.21: Screenshot log in page

Define how much client and channel connect. And rate ,limit also see this page .Fig (3.22)

Step 4: Process: sign in >ok

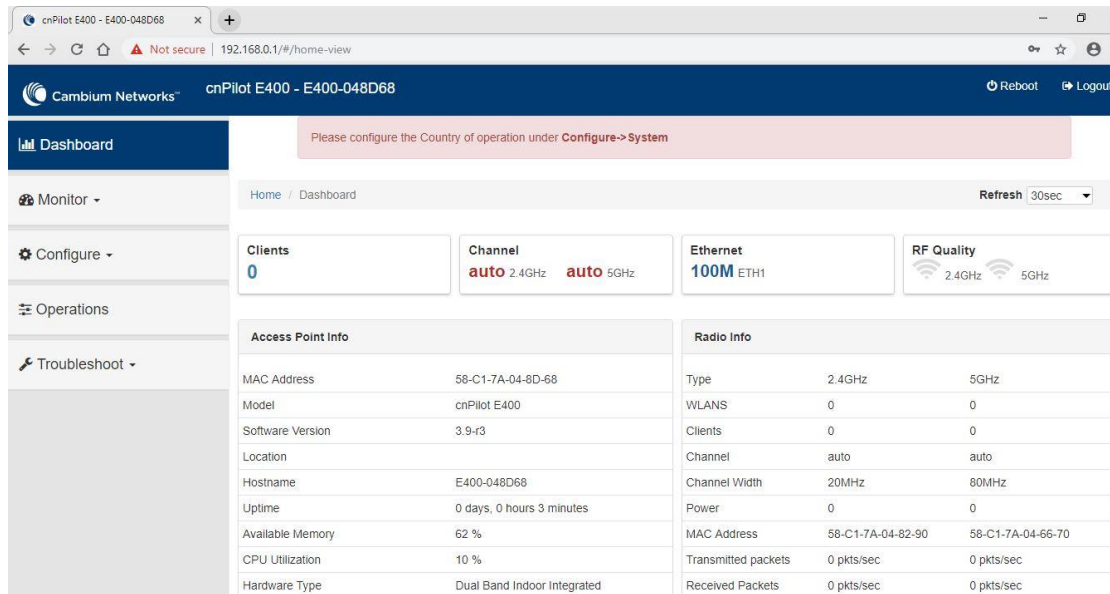


Figure 3.22: Screenshot dashboard Cambium networks

Go to system to edit name password. Fig (3.23)

Step 5 :

Name>placement >indoor>password>save.

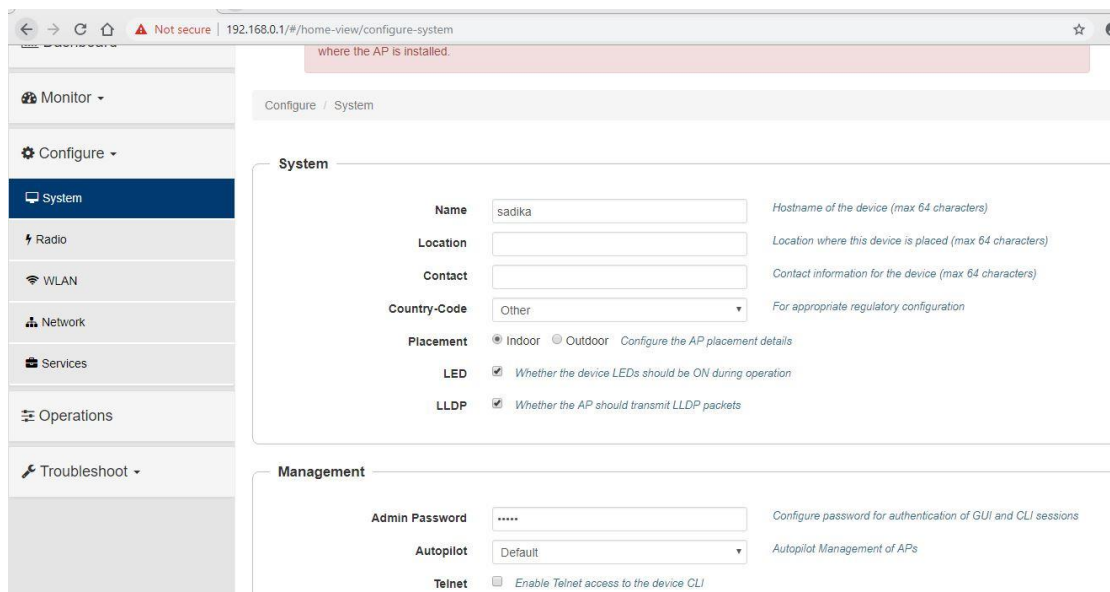


Figure 3.23: Screenshot system configure

VLAN set up in static than set up IP address DNS server than save .Fig (3.24)

Step 6:

Network >Static IP>Network mask>DNS server 1 >save

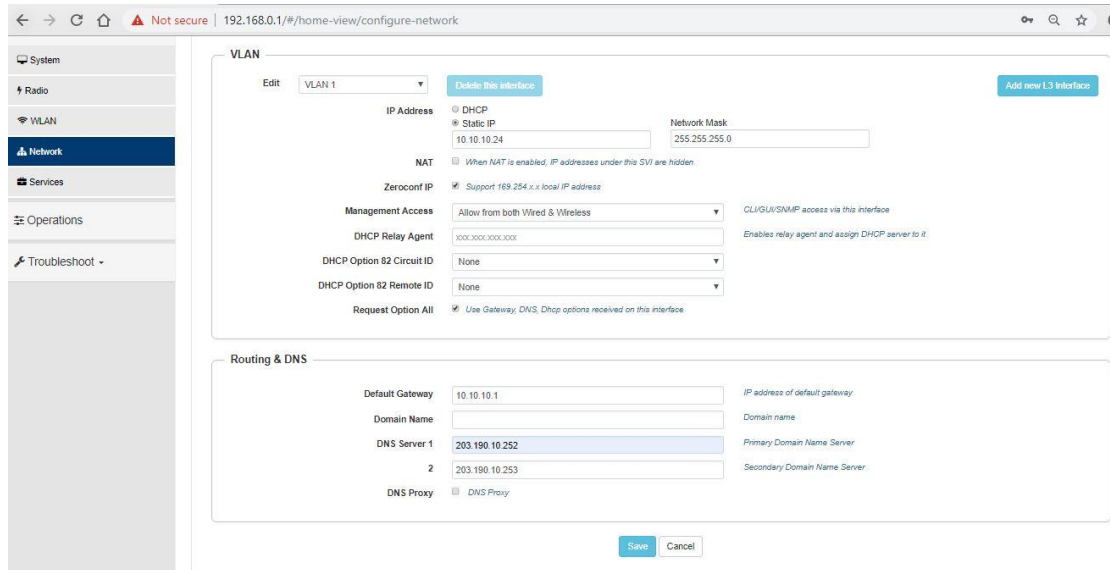


Figure 3.24: Screenshot VLAN set up

Basic set up in Ap route Access mode SSID & passphrase set than Ap mode is full set up than we can browser in internet.Fig (3.25)

Step 7: Basic >SSID>Passphrase>save .

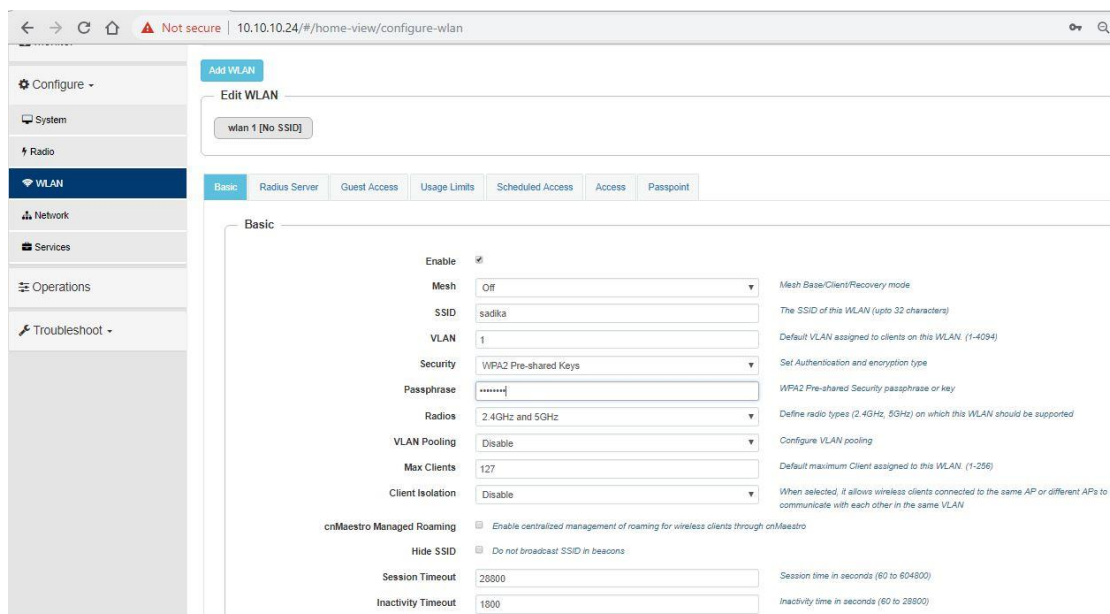


Figure 3.25 : Screenshot edit WLAN

Routing mode :

Routing mode is now configure to set VLAN , static IP, gateway, DNS server . Fig (3.26)

Step 1:

Process : Network> VLAN >Edit > VLAN 100>static ip > network ip >default gateway >DNS server 1> DNS sever 2>save

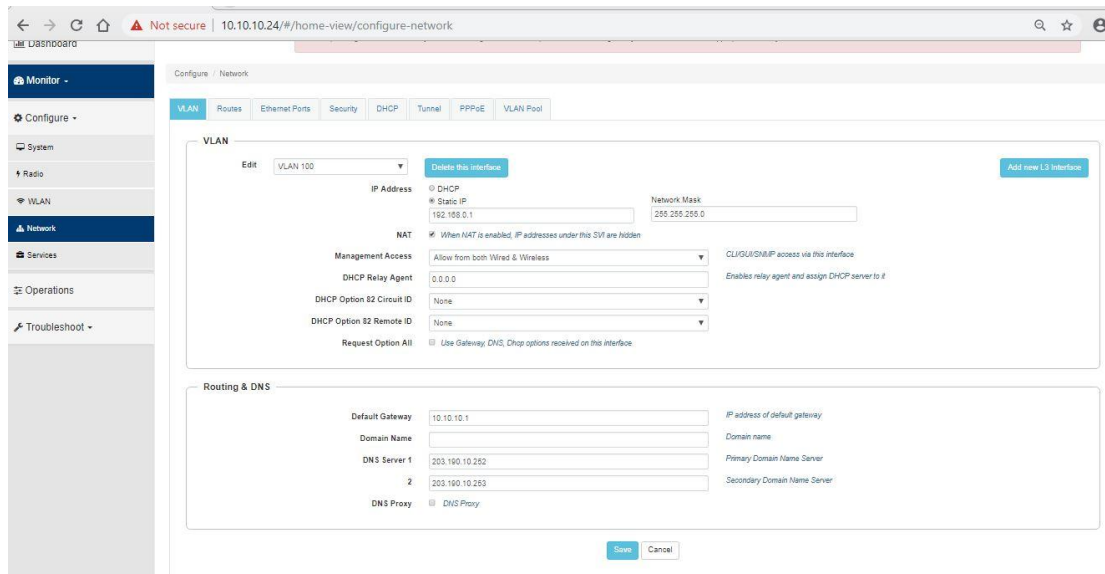


Fig 3.26: Screenshot routing mode configure.

Network icon to set up DHCP,Address range what is limit to browse and DNS sever.Fig (3.27)

Step 2:

Network> DHCP >edit> pool 1>Address range > default router >DNS address >network >clint >network >save

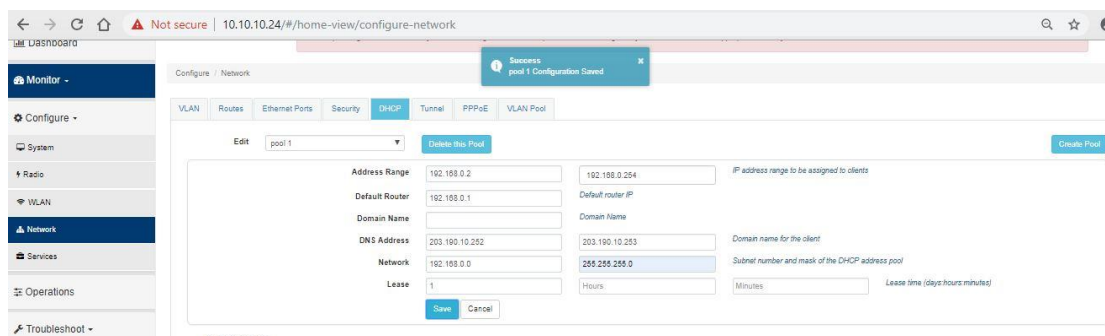


Figure 3.27: Screenshot DHCP set up

Here WLAN just edit to name and passphrase . And configure full routing mode . now browse smoothly.Fig (3.28)

Step 3:

Process: WLAN > name > passphrase >save

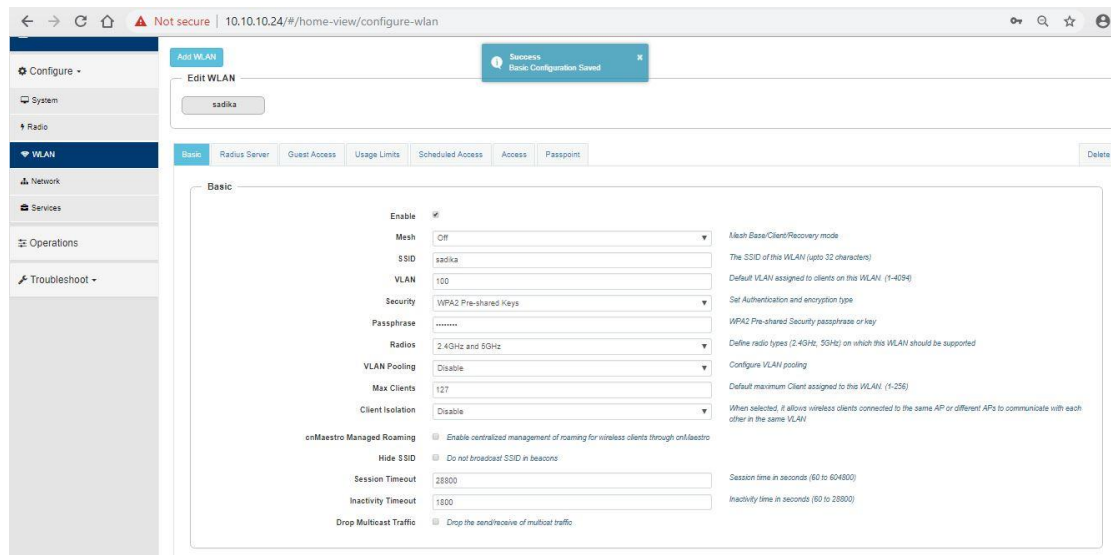


Figure 3.28: Screenshot WLAN set up

3.14 Cisco Switch:

A network switch is a computer network device that connects device to a computer network by using packet switching to receive , process and forward data to the device of destination. To configure a switch we have to know three basic modes. These modes also are the same for Router. Ref [3]; There are total five modes :

1. User Execution Switch>
2. Privilege> Switch#
3. Global configuration >Switch(config)#
4. Interface> Switch(config-if)#
5. Sub-interface >Switch(config-subif)#

3.15 Linux:

Just like Windows XP, Windows 7, Windows 8, and Mac OS X, Linux is an operating system. An operating system is software that manages all of the hardware resources associated with our desktop or laptop. Ref[8];

The OS is comprised of a number of pieces:

- The Bootloader.
- The kernel
- Daemons.
- The Shell
- Graphical Server
- Desktop Environment
- Applications.

Many benefit of Linux :

- The freedom to run the program, for any purpose.
- The freedom to study how the program works, and change it to make it do what I wish.
- The freedom to redistribute copies so I can help my neighbor.
- The freedom to distribute copies of my modified versions to others.

3.16 Installing Linux

Download the Linux iso (desktop not server) and the free VMware Player.

Install VMware Player and run it,

Select “Create a New Virtual Machine “Select “Installer disc image file” and browse to the Linux iso I downloaded.

Here we take two type of installation. We can take any other but I take typical, because it's easy to machine in as my prefers. Then next, Fig (3.29)

Step 1:

select typical>next



Figure 3.29: Screenshot Complete the VM virtual box installation

Here three types of system but I am guest that's why I easily use to OS , I will install the OS later. Than Next .Fig (3.30)

Step 2:

Select > I will install the os later >next

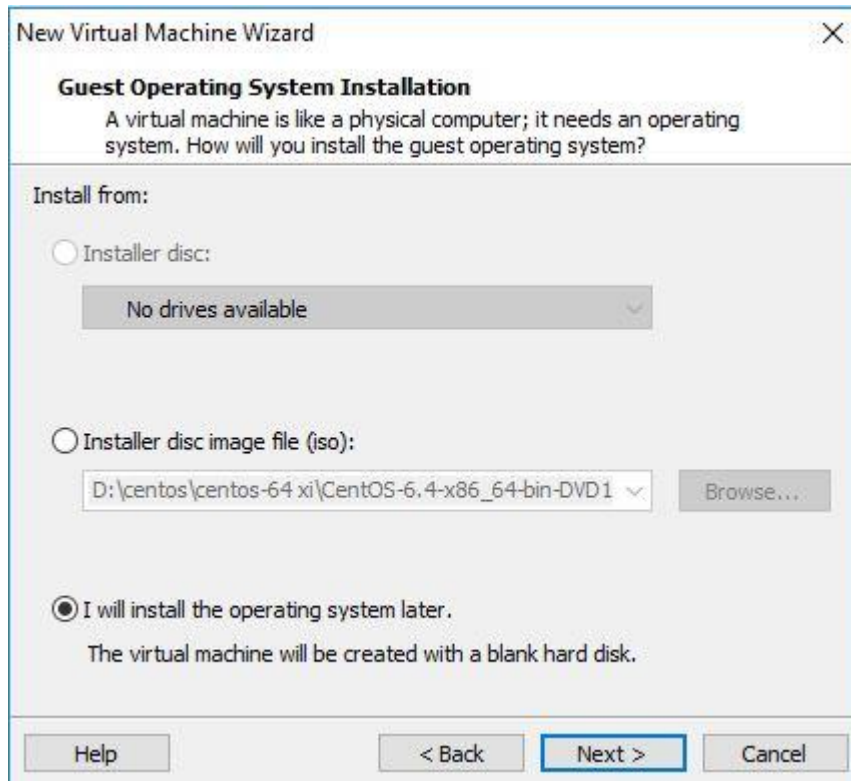


Figure 3.30: Screenshot create a virtual machine .

Here many types of OS but we select Linux then version click CentOS 64-bit because of this version. Fig (3.31)

Step 3:

Select>linux>version>next

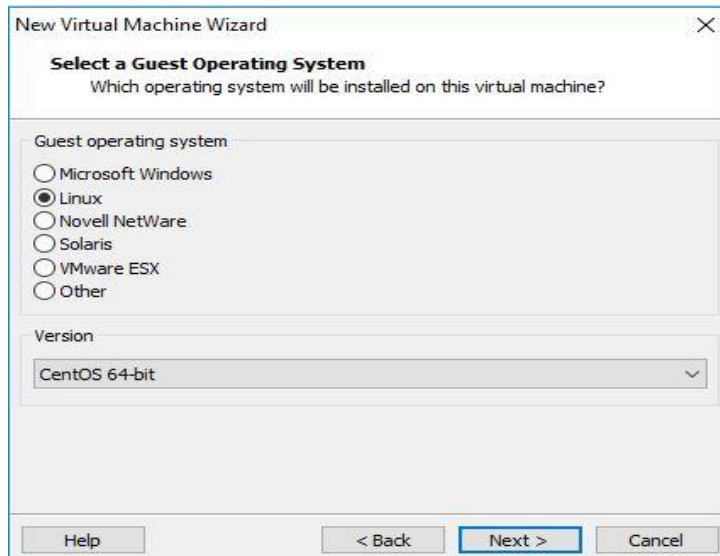


Figure 3.31: Screenshot select Linux and CentOS 64bit .

Any name select than location choose than Next .Fig (3.32)

Step 4: select name> location> next

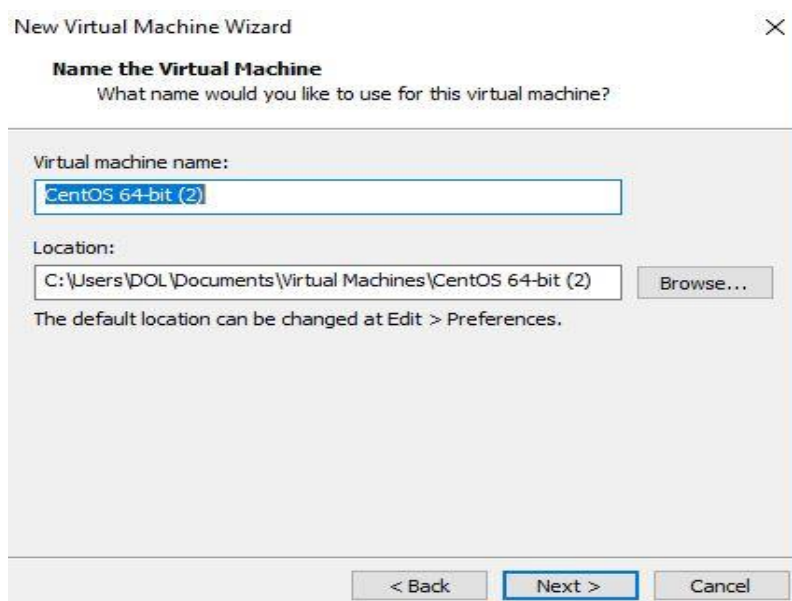


Figure 3.32 : Screenshot name and Location set up

Customize hardware Later because of I choose hardware what I want and finish.
Installed Linux in virtual box Fig (3.33)

Step 5: select > finish .

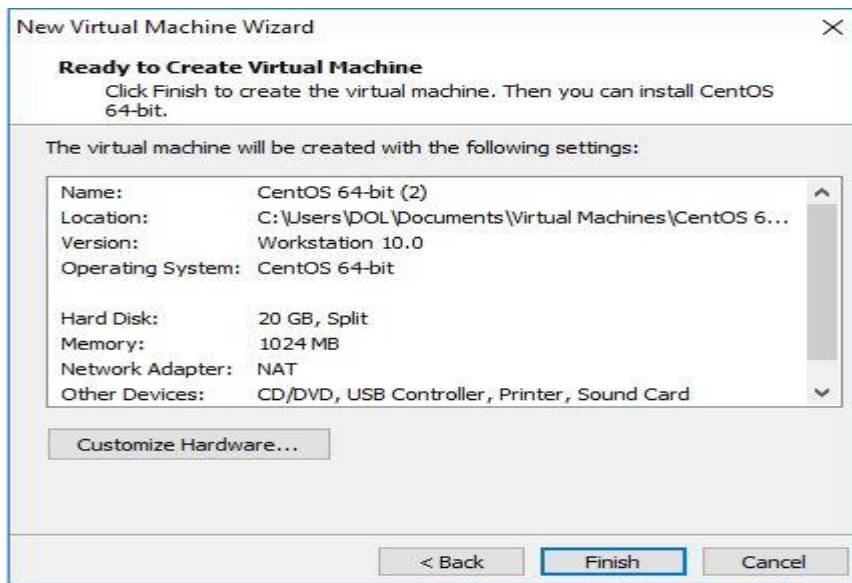


Figure 3.33 : Screenshot customize hardware.

3.17 Challenges:

As a satisfying internee there are some issues to solve project but I can solve it in each learn. Use to simple conversation with other to solve adopting the work than expert will help me to solve the problem. Expand comparable scope with any client. Each are help to learn how to helpful in client to his problem. Last of all there are many challenges in internee all of raised to develop myself. If we holding the challenge positively than it solve so much easier.

CHAPTER 4

Capability Gain

4.1 Capability Gain

- Different types of network, their uses, identify & use basic Network components.
- Develop solutions for technical issue, networking & security problems.
- Install, configure, and troubleshoot client network operating systems.
- Install Linux based OS in server and system.
- Expert in command line-based system in Linux.
- Configuration of various servers like Web Server, FTP Server and Mail Server.
- Acquiring about computer network software, components of a network.
- Acquire to troubleshoot different server problems

4.2 Smart Plan

To be honest any types of company which have some unique procedure which is particular to other company.

4.3 Reflections

My work environment is bright and open form of communication. Employees of Daffodil Online are always keeping desired communication between them.

a) Work Life Balance

Daffodil Online Limited confers Work Life Balance. DOL confer me scale between personal life& work. It's having knowledge of balance will improve job conception.

b) Open Communication & Transparent

My work environment is transparent and open form of communication. Employees of DOL are always keeping desired communication between them. Office work becomes significant because the employee knows what they really avail sense gives for DOL. Daffodil Online Limited confer me transparent & open communication between employee and me.

c) Development& Training

d) Daffodil Online Limited confer me training & development expertness when change is more protrusive ever before, it's necessary for organizations keep along with changes and train employees.

e) Strong Team Spirit

Teamwork for organization is the most important thing. His help find out how to talk about a problem together. It's an identity work and everyone is working for it. Everyone who works to achieve a lager goal works as a team I am learning strong team spirit from Daffodil Online Limited (DOL).

CHAPTER 5

Conclusion and Future Career

5.1 Discussion and Conclusion

Linux one of most popular and productive operating systems in the world. Its acceptance is product of the high and potential capacity that Linux offers to many different fields of work. This final chapter will be a summary of my internship where I will discuss the importance of the internship program run through the Operating Systems: Microsoft Windows NT/2000, Linux and UNIX. Linux in Universities" for more about this on that project, read or search through their past discussions, ask new four-year universities for an Open Source programming internship. The actual discussion was relatively unstructured, involving numerous for all practical purposes, an internship program on a massive scale. A resume is a summary of our experience, education, and skills. Its main events attended editorial meetings and internship program development training sessions. Analysis, Management of Extreme Financial Events, Game Theory UNIX, Linux, MSDOS, Windows 95/98/NT, and Macintosh. As an operating system, Linux is completely customizable, from the kernel to the GUI and beyond, which is not something that can be said. The most obvious choice at this point is to use Linux as the operating system. Generally, when people talk about 'Linux. The most popular end-user operating system is now Linux. Linux is becoming increasingly popular as the operating system for servers, gradually eating away at the market share of Windows NT.

5.2 Scope for Further Career

Procedure happening to network site are available in Bangladesh because of our country has develop in network day by day. Easy and free OS in worldwide is Linux which is big opportunity of my work skill. Any develop of computer than we easily used Linux to develop apps, disclosed authority software etc. Many companies of Bangladesh they are shift in Linux to easily use software, network also data sharing. Many requirements for the ingenuity in Linux, Mikro-tik etc.

References

- [1] About DOL << <http://daffodil.family/business-ventures/ict-ventures/daffodil-online-ltd-dol> >>
(Last accessed on 12th march 2019, at 9 pm)
- [2] Learn about Mikro-tik << <https://systemzone.net/mikrotik-router-basic-configuration-using-winbox/> >>(Last accessed on 12th march 2019, at 10 pm)
- [3] Know about Cisco switch <<<http://www.omniseccu.com/cisco-certified-network-associate-ccna/how-to-use-putty-to-configure-or-monitor-a-cisco-router-or-switch.php> >> (Last accessed on 15th march 2019, at 8 pm)
- [4] Concept the PPPoE <<https://wiki.mikrotik.com/wiki/PPpoe_server_with_profiles >> (Last accessed on 15th march 2019, at 10 pm)
- [5] Get concept the DNS Server <<<https://developers.google.com/speed/public-dns/docs/using> >>(Last accessed on 15th march 2019,at 11 pm)
- [6] About the cambium network <<<https://www.cambiumnetworks.com/why-cambium/> >> (Last accessed on 15th march 2019,at 7 pm)
- [7] Help about IP address <<<https://www.technobezz.com/how-to-find-your-router-ip-address/> >>
(Last accessed on 17th march 2019,at 10 pm)
- [8] learn about Linux << <https://www.linux.com/what-is-linux> >>(Last accessed on 20th march 2019, at 9 pm)
- [9] Concept the Bridge <<<https://support.ispsupplies.com/hc/en-us/articles/115009794208-Bridge-Two-MikroTik-Devices> >>(Last accessed 20th march 2019,at 10 pm)
- [10] Know about VM ware workstation <<https://en.wikipedia.org/wiki/VMware_Workstation>>(last accessed 21th march 2019, at 7 pm)
- [11] Know about Firewall <<<https://www.interserver.net/tips/kb/add-ip-address-windows-firewall/>>>(last accessed 21th march 2019, 10 pm)

Appendix A:

Internship Reflection

The Necessary article of internship an expert setting down to earth approve subject is cover the learning gather in class. What's more profession skill and connected to each other how to solve problem attitude, discuss the planning. Other expert to communicate each other. Bosses & representatives also observe. I know now how to manage office environment. The activates request control by myself. The normal is available to the configure for set up all network. I know this in Cisco switch ,

1. Banner Setup DOL_LAB(config)#banner motd @ Enter TEXT message. End with the character '@'.

```
##### Without  
sadika's Permission don't try to access this switch  
##### @
```

2. Enable Password Setup: DOL_LAB(config)#enable password 12345

3. Enable Secret Password Setup: DOL_LAB(config)#enable secret cisco123

**This password is recommended than 'enable password' because it is encrypted by default.

**To Encrypt system passwords, we have to execute this command:
Switch(config)#service password-encryption

4. IP Address Assign to Interface & comment the Interface: DOL(config)#interface fastEthernet 0/0 DOL(config-if)#description To_Uplink DOL(config-if)#int DOL(config-if)#ip address 192.168.50.1 255.255.255.0 DOL(config-if)#no sh DOL(config-if)#no shutdown

Appendix B: Office Element



Head Office

Name	Daffodil Online Limited
Address	102, Shukrabad (3rd floor), Mirpur Road, Dhanmondi, Dhaka - 1207, Bangladesh
Telephone	02-9143258-60
Fax	880-2-8116103
E-mail	info@daffodilnet.com
Website	www.daffodilnet.com
Type of Organization	Nationwide Internet Service Provider (ISP)

INTERNSHIP ON ISP SERVER CONFIGURATION ON LINUX, MIKROTIK ,CISCO SWITCH, Wi-Fi PLATFORM & CAMBIUM NETWORKS

ORIGINALITY REPORT



MATCH ALL SOURCES (ONLY SELECTED SOURCE PRINTED)

17%

★ Submitted to Daffodil International University

Student Paper

Exclude quotes Off

Exclude matches Off

Exclude bibliography Off