

INSTALLATION AND IMPLEMENTATION OF ACTIVE DIRECTORY

BY
CHINMOY BALA
ID: 181-25-652

This Report Presented in Partial Fulfillment of the Requirements for the Degree of
Masters of Science in Computer Science and Engineering

Supervised By
Dr. Sheak Rashed Haider Noori
Associate Professor & Associate Head
Department of Computer Science and Engineering
Daffodil International University



DAFFODIL INTERNATIONAL UNIVERSITY
DHAKA, BANGLADESH
May 2019

APPROVAL

This Project titled “**Installation and Implementation of Active Directory**”, submitted by Chinmoy Bala (ID:181-25-652) to the Department of Computer Science and Engineering, Daffodil International University, has been accepted as satisfactory for the partial fulfillment of the requirements for the degree of MSC in Computer Science and Engineering and approved as to its style and contents. The presentation has been held on 5 May 2019.

BOARD OF EXAMINERS



Dr. Syed Akhter Hossain
Professor and Head

Department of Computer Science and Engineering
Faculty of Science & Information Technology
Daffodil International University

Chairman



Dr. Sheak Rashed Haider Noori
Assistant professor and Associate Head


Department of Computer Science and Engineering
Faculty of Science & Information Technology
Daffodil International University

Internal Examiner



Md Zahid Hasan
Assistant Professor and Coordinator of MIS
Department of Computer Science and Engineering
Faculty of Science & Information Technology
Daffodil International University

Internal Examiner



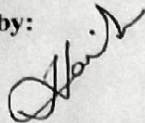
Dr. Mohammad Shorif Uddin
Professor
Department of Computer Science and Engineering
Jahangirnagar University

External Examiner

DECLARATION

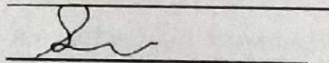
I hereby declare that, this project has been done by me under the supervision of **Mr. Dr. Sheak Rashed Haider Noori, Associate Professor and Associate Head, Department of CSE** in Daffodil International University. I also declare that neither this project nor any part of this project has been submitted elsewhere for award of any degree or diploma.

Supervised by:



Dr. Sheak Rashed Haider Noori
Associate Professor and Associate Head
Department of CSE
Daffodil International University

Submitted by:



Chinmoy Bala
ID: 181-25-652
Department of CSE
Daffodil International University

ACKNOWLEDGEMENT

First I express my heartiest thanks and gratefulness to almighty God for His divine blessing makes me possible to complete this project successfully.

I feel grateful to **Mr. Dr. Sheak Rashed Haider Noori, Associate Professor and Associate Head**, Department of CSE, Daffodil International University, Dhaka. DeepKnowledge & keen interest of my supervisor in the field of Software Development influenced me to carry out this project. His endless patience ,scholarly guidance ,continual encouragement , constant and energetic supervision, constructive criticism , valuable advice ,reading many inferior draft and correcting them at all stage have made it possible to complete this project.

I would like to express my heartiest gratitude to **Mr. Dr. Sheak Rashed Haider Noori, Associate Professor and Associate Head**, Department of CSE, **Professor Dr. Syed Akhter Hossain**, Head, Department of CSE, for their kind help to finish my project and also to other faculty member and the staff of CSE department of Daffodil International University.

I would like to thank our entire course mate in Daffodil International University, who took part in this discuss while completing the course work.

Finally, I must acknowledge with due respect the constant support and patients of my parents.

ABSTRACT

Microsoft's Active Directory (AD) services provide methods of unifying an entire network of devices and applications. AD is a central collection of users, groups and computers, enabling single sign-on (SSO) for devices and applications joined to the AD domain. However, the tools provided by Microsoft that helps to manage the AD services do not offer the capabilities of bulk user, group and computer management.

Existing tools provide mechanisms for managing user properties, passwords and group membership in bulk; however, each tool solves an individual problem. In this project, the Active Directory Management Tool (ADMT) combines several of these mechanisms into a single application. Integrating these tools aids system administrators by providing a single tool to manage multiple components of AD.

Additionally, this tool manages group membership based on a user's role within a business. This will aid system administrators in defining the level of access that a particular person with a given business role should have. Also, the tool includes a logical filter. Microsoft's tools include a filter that utilizes an object's string attributes to determine if the attribute's value contains a specified phrase. The logical filter proposed will allow system administrators to utilize additional attributes to determine if the attribute's value falls within a certain range

TABLE OF CONTENT

<i>Topic name</i>	<i>Page no</i>
Chapter 1: Introduction	
1.1 Introduction	3
1.2 Methodology	4
1.3 Active Directory	4-5
1.4 How to join your computer to a Domain	5-6
Chapter 2: Application	
2.1 What is windows server	7
2.2 Windows Server 2008 Tools and Workstation Component	7-8
2.3 Objectives of Windows Server 2008	8
2.4 Installing Windows Server 2008	8-22
Chapter 3: Activities	
3.1 Create a new organizational Unit	23
3.2 Create a new Active directory User Account	23-24
3.3 Create a user member of Admin and Local User	24-26
Chapter 4: Domain Password policy	
4.1 Password Policy	27
4.2 Domain User Password Reset	28
4.3 Self Service Password Reset Tool	29

Chapter-5: Implementation

5.1 Open Group Policy from Active Directory User and Computer	30-39
5.2 Desktop Wallpaper Group Policy	40
5.3 Map Network Drives on Windows Clients via Group Policy	41-44

Chapter-6:

6.1 Conclusion	45
6.2 Future work	45

Chapter-7:

7.1 References	46
----------------	----

CHAPTER-1

Introduction

1.1 Introduction:

Active Directory (AD) is an enrolment administration that Microsoft created for the Windows domain networks. It is incorporated into most Windows Server working frameworks as a lot of methods and administrations. Firstly, Active Directory was just accountable for brought together space the board. Beginning with Windows Server 2008 be that as it may, Active Directory turned into an umbrella title for an expansive scope of registry-based character related administrations

A server running Active Directory Domain Service (AD DS) is known as a domain controller. It validates and approves all clients and PCs in a Windows area type organize—estimating and implementing security approaches for all PCs and introducing or refreshing programming. For instance, when a client signs into a PC that is a piece of a Windows space, Active Directory checks the submitted secret phrase and decides if the client is a framework chairman or ordinary client.

Active Directory authorization the executives and capacity of data, gives confirmation and approval systems, and sets up a structure to send other related administrations: Certificate Services, Active Directory Federation Services, Lightweight Directory Services and Rights Management Services.

Active Directory (AD) is a catalog administration that Microsoft created for Windows space systems. It is incorporated into most Windows server working frameworks as a lot of procedures and administrations. At first, Active Directory was just responsible for brought together area the executives. Beginning with Windows server 2008, in any case, Active Directory turned into an umbrella title for an expansive scope of catalog-based character related administrations.

1.2: Methodology:

- ***Active Directory Security Reporting*** - Perform a total AD Security Audit and figure out who approaches what in your Active Directory by revealing each article and its security in detail. All the more significantly, figure out who can perform what basic managerial activities, for example, erasing individuals from an OU, changing consents and so on. Look your Active Directory for Inactive, Disabled, Expired and Unknown Accounts and see where and how they bargain security.
- ***Active Directory Group Membership Reporting*** - Determine the effect of circuitous gathering enrollments, particularly participation of Security gatherings (rather than simply discovering who the individuals from your Security bunches are).
- ***Active Directory Nested Group Membership Reporting*** - Generate the most far reaching report on Active Directory Users and Groups data, including complex settled gatherings and multi-bunch enrollments. ARKAD's inside and out client/bunch enrollment report incorporates every one of the gatherings that a client is individual from over the whole AD association (and not simply the gatherings inside one space).
- ***Active Directory User Reporting*** - Identify and report on all control related parts of User account the executives – report on Password Expiry, Password setting, last logon and so forth.
- ***Active Directory OU Reporting*** - Take unlimited oversight of OU the board – report on OUs, Delegation of organization, Group approaches and so on.

1.3 Active Directory:

- And limit on rather than those articles, and the arrangement of their names. For more information about the blueprint, see design.
- An overall rundown a great deal of rules, the development, that describes the classes of things and qualities contained in the list, the prerequisites that contains information about each article in the vault. This empowers customers and directors to find vault information paying small personality to which space in the list truly contains the data.

For more information about the overall file, see the activity of the overall rundown. An inquiry and file system, with the goal that objects, and their properties can be distributed and found by system clients or applications. For more data about questioning the catalog, see discovering index data.

1.4 How to Join Your Computer to a Domain:

You should be signed on as an administrator or an individual from the Administrators group so as to finish these methods. If your PC is associated with a system, arrange approach settings may likewise keep you from finishing this method.

1. Sign in as an administrator. Right click on my computer and a short time later snap properties. The System Properties exchange box is appeared.
2. In the PC name tab, press Change. In the Computer Name Changes discourse box, select Domain and enter the name of that domain in the substance box, as showed up in Figure 1 underneath. In this precedent, the PC starting at now named hq-res-wrk-01 is joined to the Reskit space.

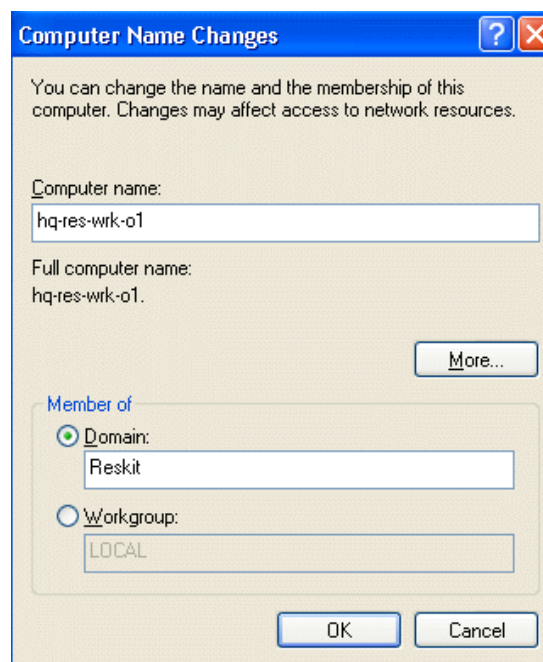


Figure 1.1 joining a computer to a domain

3. Give user name and password to exhibit you have the fitting consent to join the domain.
4. When the Welcome to the region message appears, press OK. You ought to restart your PC for the change to deliver results.

CHAPTER-2

Application

2.1 What is windowsServer:

Windows Server is a group of operating systems designed by Microsoft that bolsters enterprise level management, data storage, applications, and correspondences, Previous versions of Windows Server have concentrated on stability, security, networking, and various improvements to the file system.

2.2 Windows Server 2008 Tools and Workstation Component:

- **Windows Server 2008 R2 and Windows 7**

This topic lists the Windows Power Shell modules included with Windows Server 2008 R2, Windows 7, Windows Server 2008, and Windows 8. The Windows PowerShell modules in the list support automating the features of those operating systems and provide links to the camlet references for each module. These modules enable you to use Windows PowerShell to administer, maintain, configure, and develop new features for Windows Server 2008 R2, Windows 7, Windows Server 2008, and Windows 8.

- **Manage Multiple, Remote Servers with Server Manager**

The content in this section describes how to use Server Manager in Windows Server 2008 R2 and Windows Server 2008 to manage both local and remote Windows-based servers from desktop computers.

- **Deploy Remote Server Administrator Tools**

To ease remote server management, you can download and install Remote Server Administration Tools for Windows 8.1. Remote Server Administration Tools for

Windows 8.1 includes Server Manager, Microsoft Management Console (MMC) snap-ins, consoles, Windows PowerShell cmdlets and providers, and some command-line tools for managing roles and features that run on Windows Server 2008 R2 and Windows Server 2008.

- **Install and use PowerShell web Access**

The content in this section describes how to configure and use Windows PowerShell Web Access, a feature that allows a server that is running Web Server (IIS) to act as a Windows PowerShell gateway and provide a web-based Windows PowerShell console to users in your organization.

2.3 Objectives of Windows Server 2008:

Characterizing your sending goals causes you to figure out which Windows Server 2008 highlights you have to integrate and how to those highlights identify with your current condition. Characterizing the undertaking's degree encourages you to recognize precisely what the group can and can't convey inside the venture limitations.

2.4 Installing Windows Server 2008:

First of we need to boot up windows server from CD or ISO and choose the language.



Figure No: 2.1

Need to select which Language you want to install and input options and afterward press on Next button.



Figure No: 2.2

Click Install Now

Choose the operating system you need to install. I have picked windows server 2008 with GUI. Another decision is server focus which was first displayed in windows server 2008 and is an immaterial present with no GUI anyway gives remote organization through Windows Power Shell and distinctive devices.

Press Next

Need to accept term and license

And again, press next

We are playing out a new fresh installation of Windows server, so press on custom.

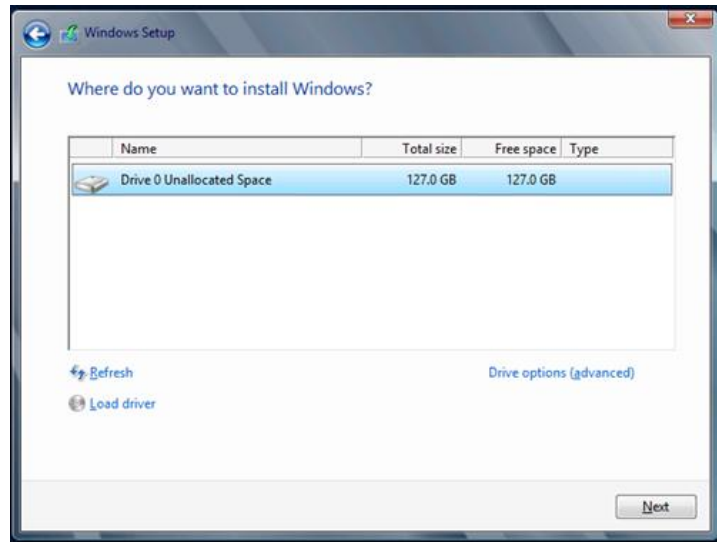


Figure No: 2.3

Need to partition your drives and press next.

The fresh installation of Windows at that point continues.

The installation will in the end re-begin your Windows Server where it will experience the last phases of setting up the environs for start firstly.

We will inevitably be provoked to give a password for the built-in Administrator account.

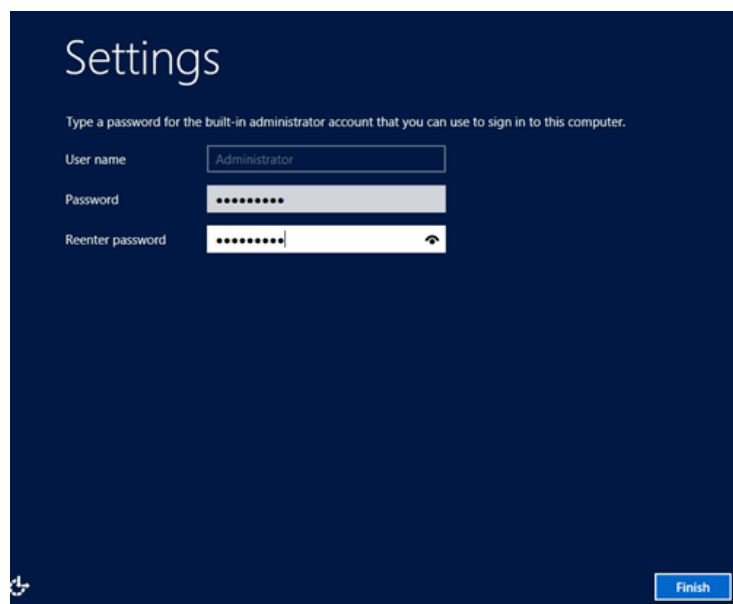


Figure No: 2.4

Press Finish icon.

You will currently provide the fresh Windows login screen, which is a reasonable opportunity what exactly we have been acquainted with past arrivals of Windows Server.



Figure No: 2.5

Press Ctl-Alt-Delete to login into your new server and provide your pc credentials.

You will be given the new Server Manager Screen which is genuinely improves the association and game plan of your new server. Our key target for this article is to structure Active Directory and its related organizations, for instance, DNS server.

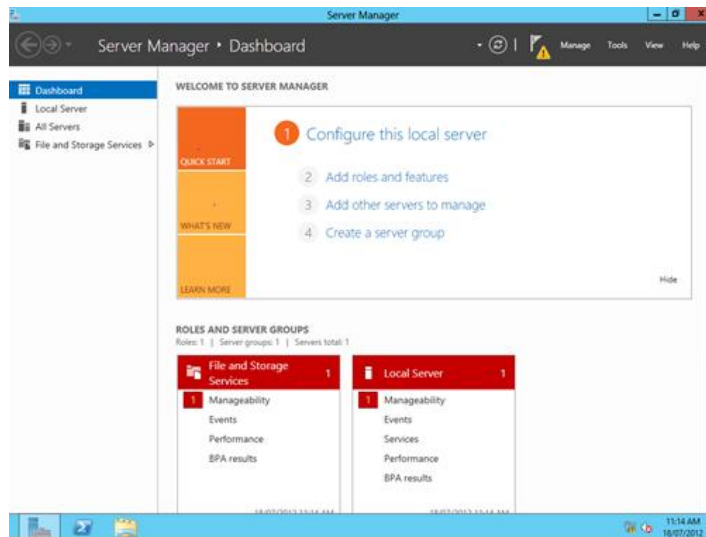


Figure No: 2.6

Firstly, we need to change the computer name. Windows doesn't hesitate to give a default exceptional name as win(random characters)

We need to do thusly, from the Server Manager > Dashboard screen then press on local server and after that we need to press the computer name and hyperlink.

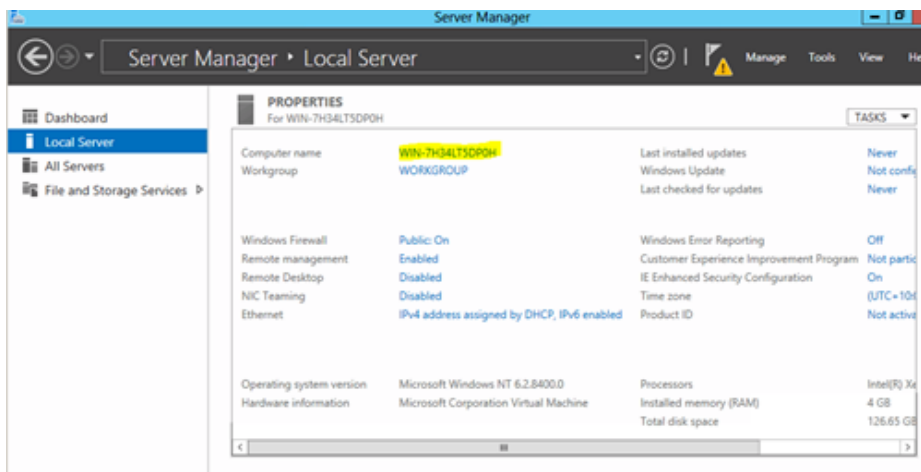


Figure No: 2.7

This will take you to the all commonplace System Properties

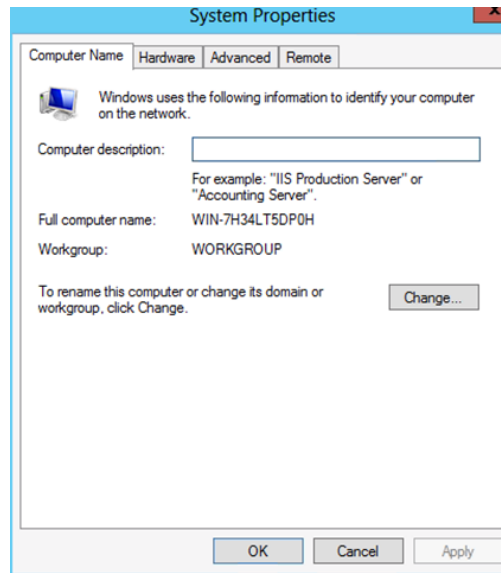


Figure no: 2.8

Click Change, enter an increasingly alluring pc name and afterward pressok.

You need to that point be provoked to reboot your PC to apply that type of changes. Pressok and afterward press click on reboot now.

Thenyour PC has rebooted, we can give the Server Manager Screen. By and by we are set up to mastermind this server as an Active Directory Controller.

Counting the AD Role services.

From the Dashboard click on "Add roles and features". You need to give the "Before you start screen. Snap next button. On the "Installation Type" screen click on "Role-based or feature-based installation".

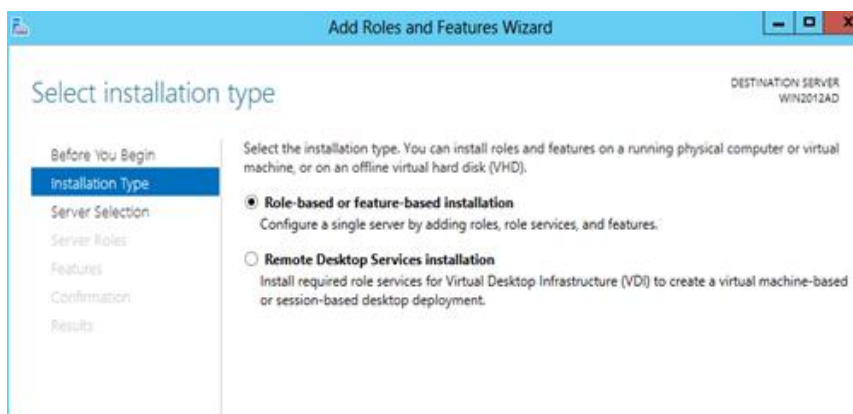


Figure No: 2.9

Pressnext button

This is different element of Windows server 2012 R2 where you can give the roles and features to remote servers and even offline virtual hard plates.

For this situation, we can choose the present server from the server pool.

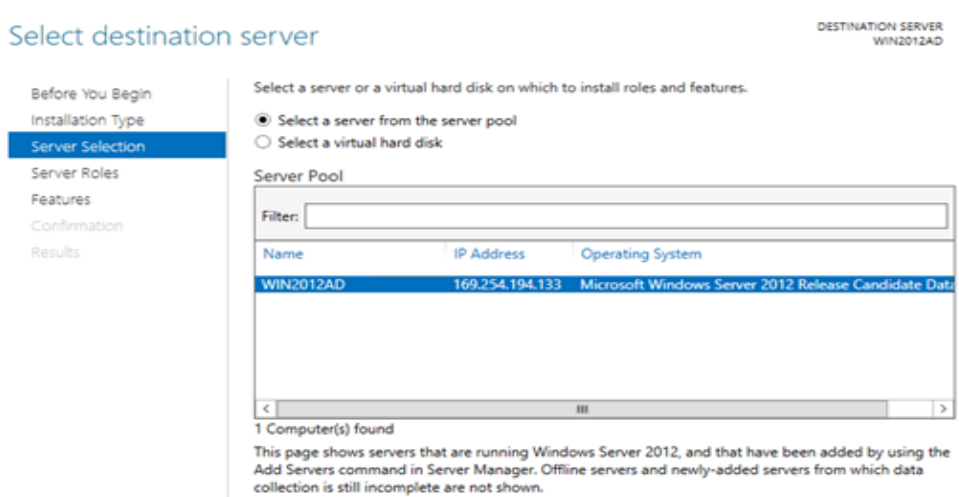


Figure No: 2.10

Press next button

We will choose the service "Active Directory Domain Services" and "DNS Server" in the event that it hasn't just been provisioned.

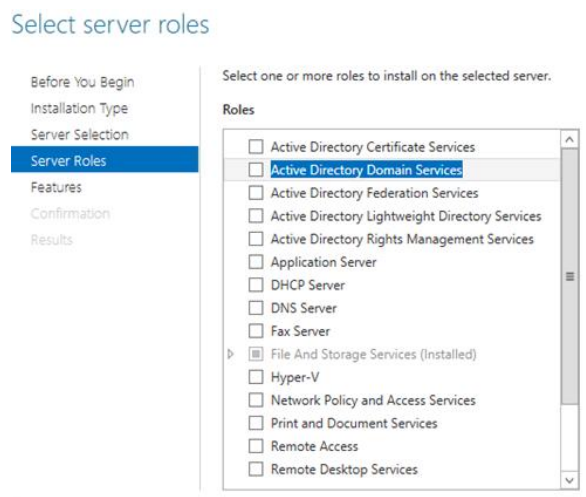


Figure no: 2.1

You will at that point be incited to include highlights this are needed for AD Domain services.



Figure No: 2.12

Click on Add Features

Click Next

On the off chance that you need to include extra highlights, you can do as such from the following screen, generally click Next

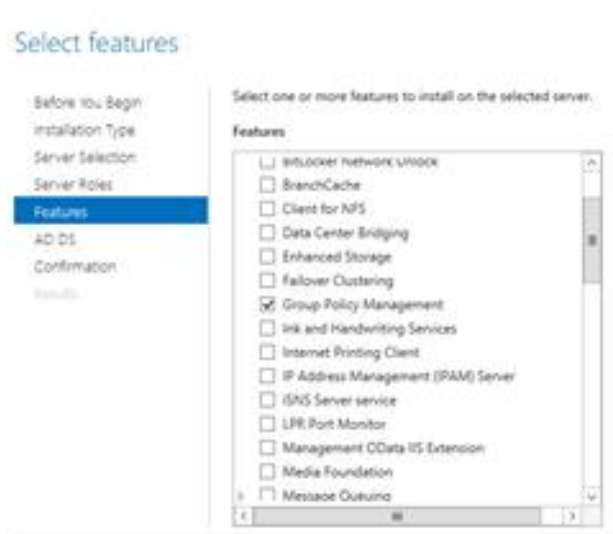


Figure No: 2.13

You will currently be given the AD Domain Services (AD-DS)screen illustrating more data about AD-DS and its prerequisites. You will see that DNS serveris a MUST and has dependably been the situation.

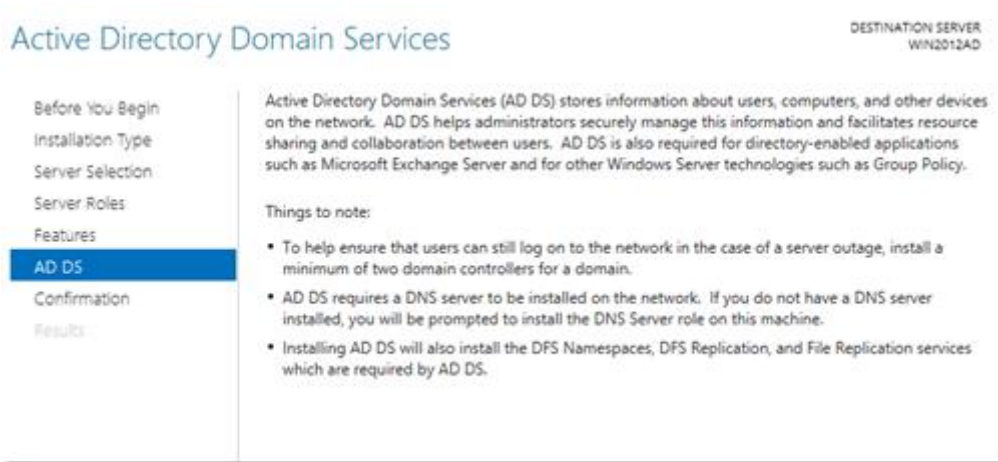


Figure No: 2.14

Press next button to go next page.

Now you can see with a essence of installation selection items

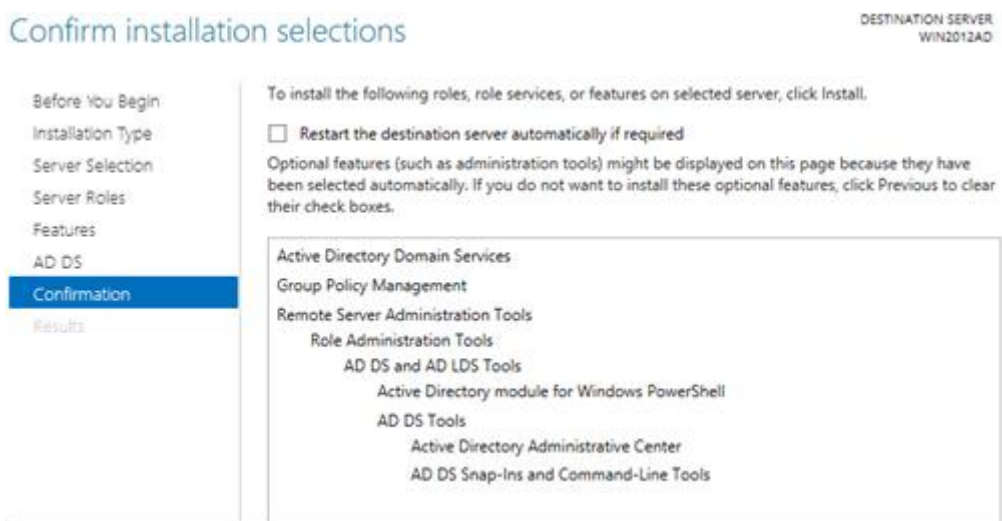


Figure No: 2.15

The installation will now begin

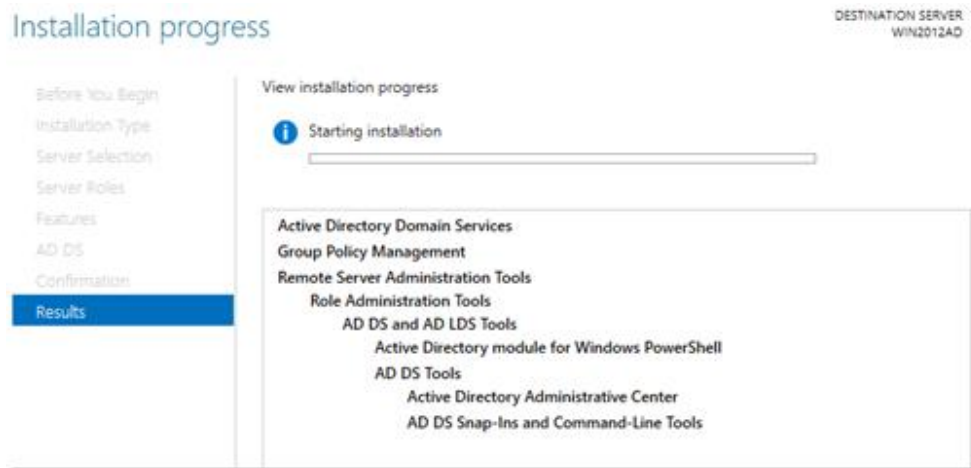


Figure No: 2.16

Upon consummation you will be given an establishment succeeded message.

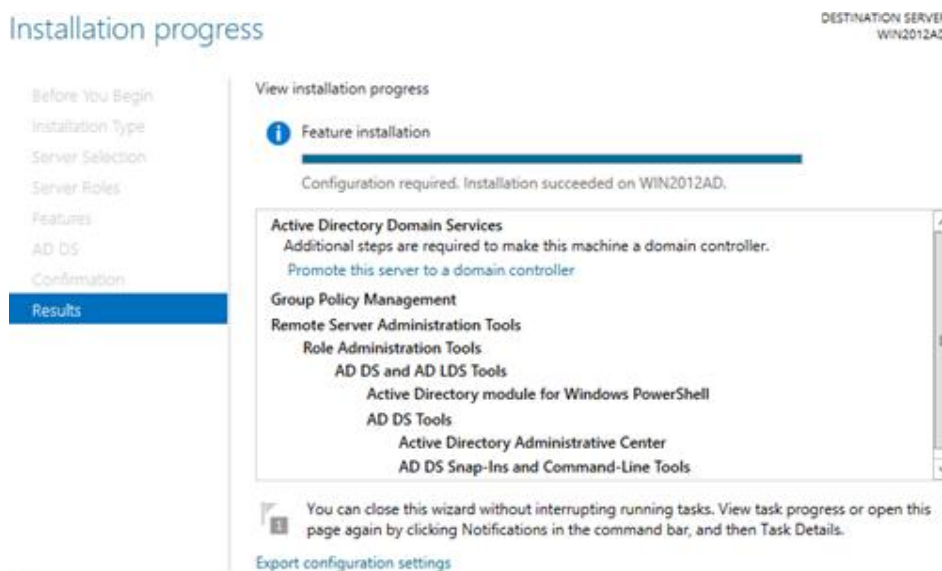


Figure No: 2.17

Press close.

Back in your server manager, you can see that Active directory domain services has added to the other side course tree. Snap on it and a while later snap on extra on the right course sheet where it communicates that configuration is required for Active Directory Domain Services.

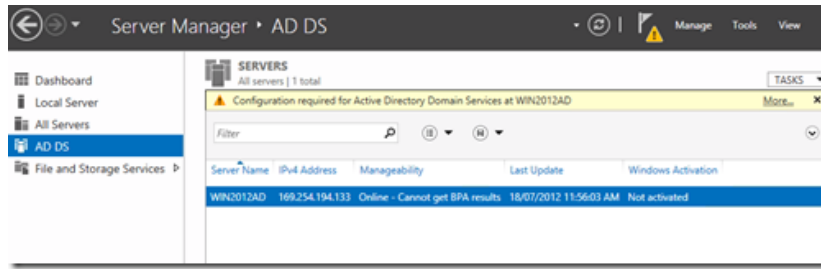


Figure No: 2.18

You will currently be given the all server task niceties, in what you can tap on Promote this server to an area controller under Action.

The continuationfigure screen shows up and we can choose "Add a new forest" as it is a first domain controller.



Figure No: 2.19

Provide your main Root domain name and afterward press next button.

Accompanying page will at that point show up which you can enter and choose Domain controller Options.

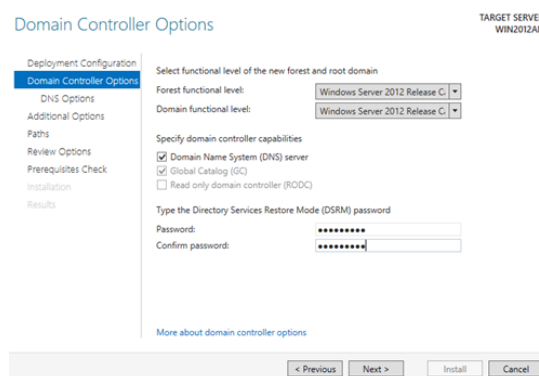


Figure No: 2.20

You will then get the below warning in which you can ignore for now.

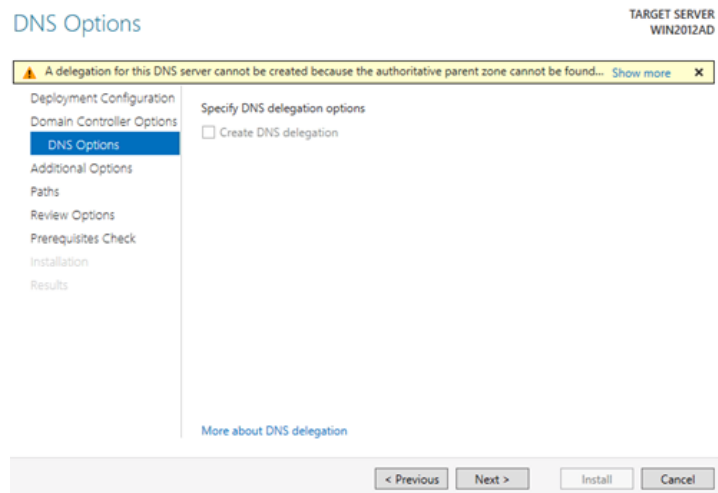


Figure No: 2.21

Press next button to go next page.

The NETBIOS domain name can be shown at that point consequently. In case of a contention, it will be recommended an option by attaching which name is with a 0.

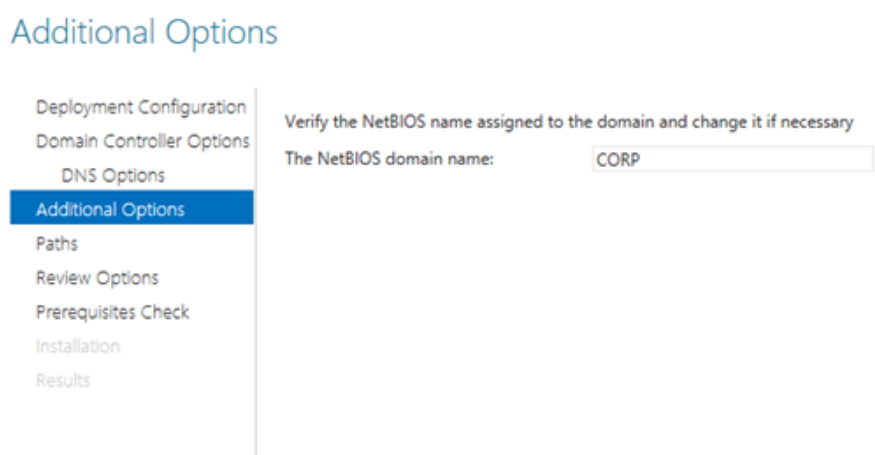


Figure No: 2.22

Press on next button

Affirm the areas of your Database folder, also need to log folder and SYSVOL folder which those data will be saved.

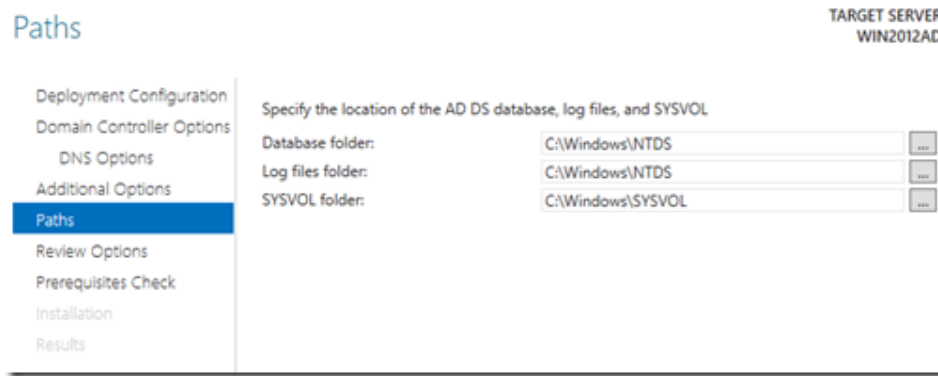


Figure No: 2.23

Click Next

Survey your determinations and afterward click next.

On the off chance that the majority of the requirements check has passed effectively, you can almost certainly press on install to continue.

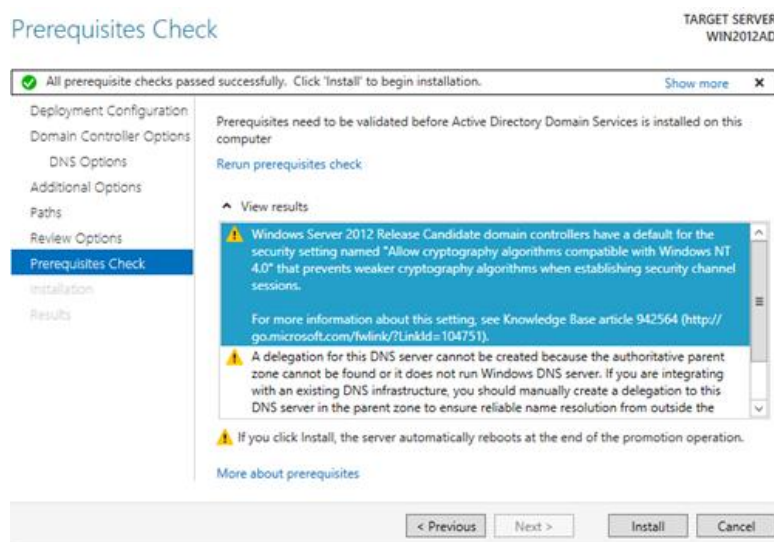


Figure No: 2.24

Press on install button

The installation procedure will be started now and you will be seen the progress is being shown.

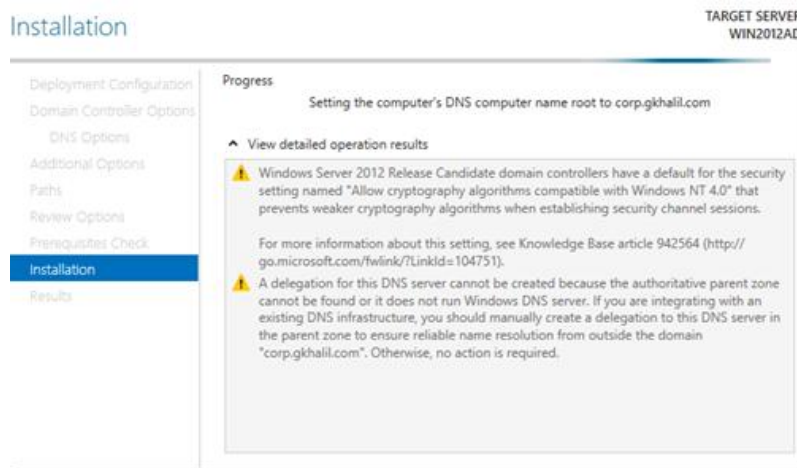


Figure No: 2.25

The PCs will probably restart without anyone else to finish the establishment so don't be frightened in the event that it does. You will get a short cautioning exhorting so.

Upon restart, you ought to have the capacity to login utilizing your space accreditations for the user administrator.

When server manager has propelled, press the button on Tools > Active Directory Administrative Center

It can be welcomed with the beneath Welcome page.

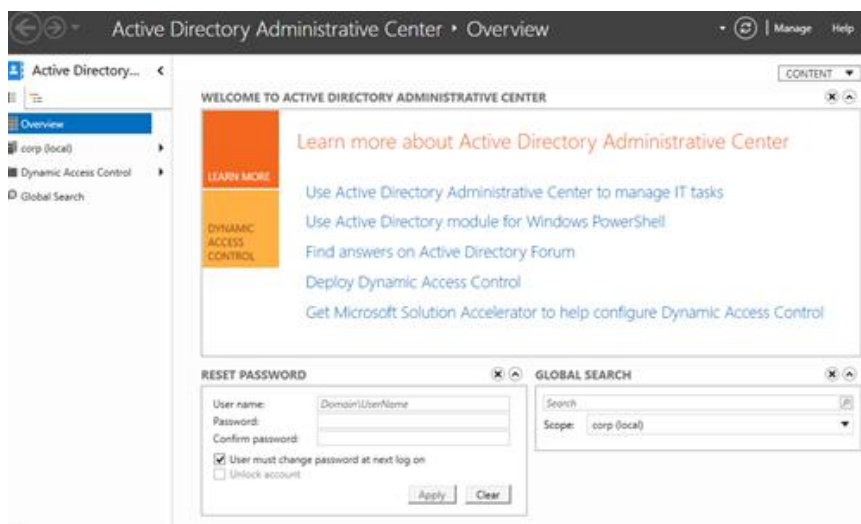


Figure No: 2.26

click on your domain on the left route sheet, in my case it is corp. (local).

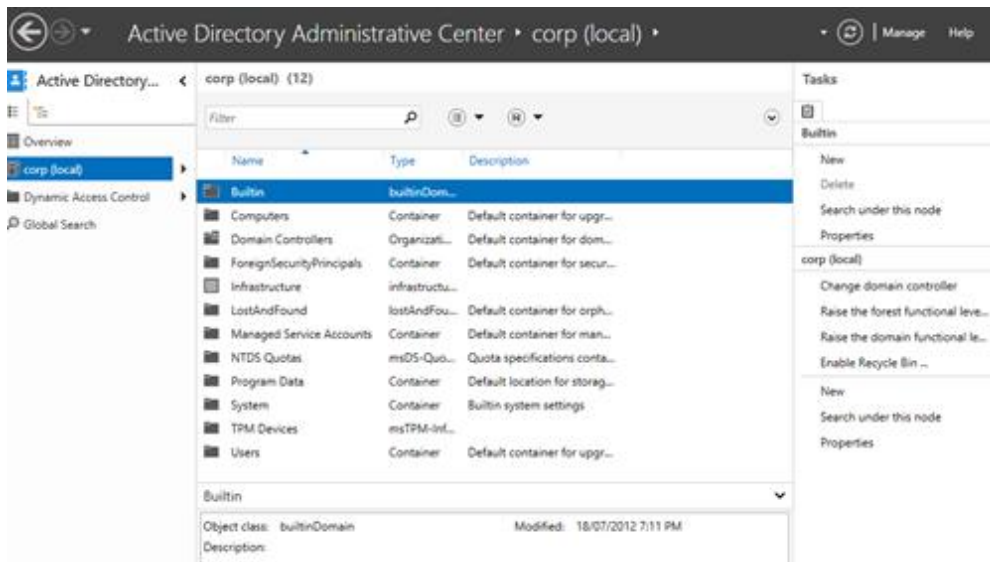


Figure No: 2.27

How about we start by making your first OU that will home your corporate clients (Do not a devotee of utilizing the default Users). On the correct route sheet below Task ><domain name>press on new button and afterward mark "Organizational Unit". Provide the obligatory subtleties.

CHAPTER-3

Activities

3.1 Create a new Organizational Unit:

MemParticipation in proportionate, is the base needed to finish that system. Survey insights regarding utilizing the fitting records and gathering enrollments.

- Using the Windows interface

To make another OU utilizing our Windows surface

1. To open Active Directory Users and Computers, press Start, press Control Panel, double press Administrative Tools, and after that double press Active Directory Users and Computers.

We can also open Active Directory Users and Computers from cmd. We can just type dsa.msc and press enter button.

2. In this console tree which open, then we need press right-click the area name.
3. Give point to New, and afterward click OU.
4. We need to give the name of organizational unit (OU).

3.2 Create a new Active directory User Account:

To open We can also open Active Directory Users and Computers from cmd. We can just type dsa.msc and press enter button.

To include a client, you can likewise press

Utilizing the Windows interface

1. Go to cmd and need to press dsa.msc then open active directory users and computers console.

2. In the comfort tree, need to right-button press the organizer which you need to include a client account.

Where?

3. Active Directory Users and Computers/area hub/organizer
4. Select the **New button**, and after that press user options select.
5. In the First **name** option, type the client's *first name*.
6. In **Initials** page, need to type the client's initials information.
7. In the **Last name**, need to type the client's last name.
8. Need to modify **Full name** to include initial or turn around request last and first names.
9. In **User logon name**, need to give the client logon name, press the UPN postfix in the rundown and after that press forward button.
10. At the box of password we need to provide **Password and Confirm password**, give the user password, and after that need to mark the suitable password choices.

3.3 Create a user member of Admin and Local User:

Firstly, you have to make a security group which name *Local Admin*

- Open Active Directory Users and Computers (dsa.msc)

- Need make a security Group which name is **Local Admin**. From that menu **Action | New**

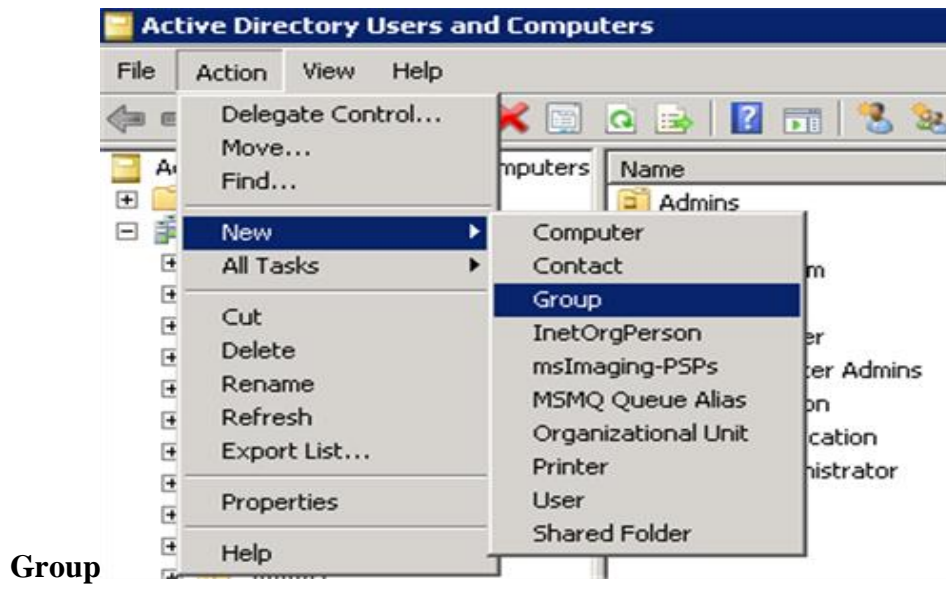


Figure No: 3.1

- Name the group as **Local Admin**.

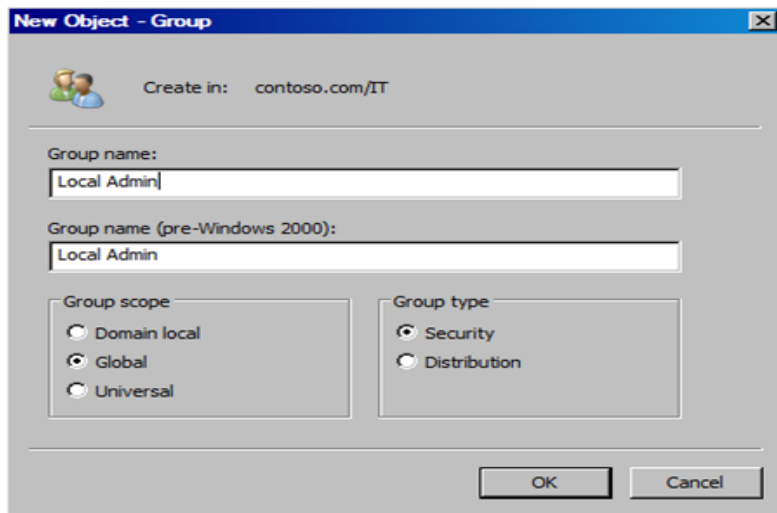


Figure No: 3.2

- To add a assistdesk individuals to Local Admin group. Weneed to include two users state Tom and Bob.

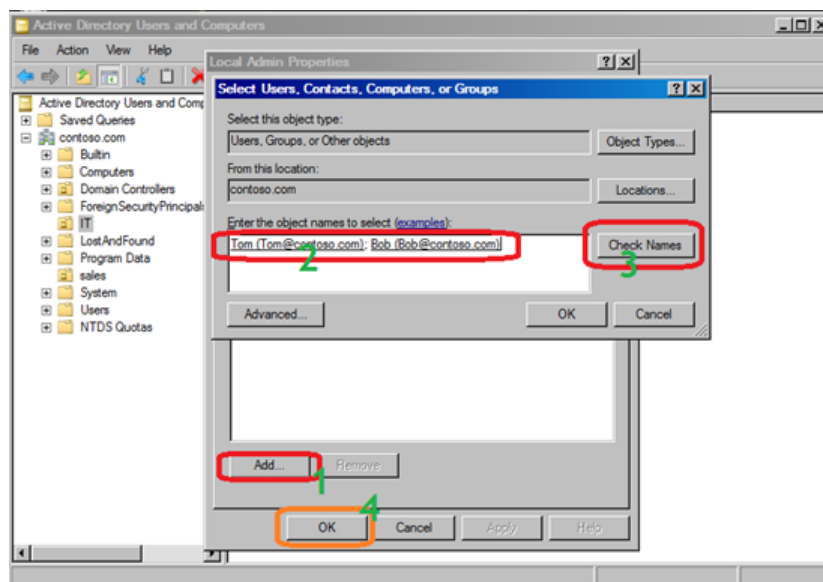


Figure No: 3.3

CHAPTER-4

Domain Password Policy

4.1 Password Policy:

When you change a standard Group Policy Object (GPO) from the Group Policy Management Console (GPMC), you'll find comparative decisions for the Account methodology. To find the mystery key technique settings, which are under the Account strategy, open the going with method for methodology envelopes: Computer Configuration\Policies\Windows Settings\Security Settings\Account Policies. One time, you will find three course of action coordinators: Password Policy, Account Lockout Policy and Kerberos Policy.

For all of these coordinators and the settings consists inside them, there's a default in Windows server 2008 r2 freshly presented zones. The default settings are as seemed Table 1.

Policy Setting	Default Value
Enforce password history	24 days
Maximum password age	42 days
Minimum password age	1 day
Minimum password length	7
Password must meet complexity requirements	Enabled
Store passwords using reversible encryption	Disabled
Account lockout duration	Not defined
Account lockout threshold	0
Reset account lockout counter after	Not defined
Enforce user logon restrictions	Enabled
Maximum lifetime for service ticket	600 minutes
Maximum lifetime for user ticket	10 days
Maximum lifetime for user ticket renewal	7 hours
Maximum tolerance for computer clock synchronization	5 minutes

Table 4.1. Account Policy settings default values.

4.2 Domain User Password Reset:

We need to open active directory users and computers, press the start button and press control panel and need to go administrative tools, and we need to double press on AD users and computers. If we need to reset password press right button and press the reset password options.

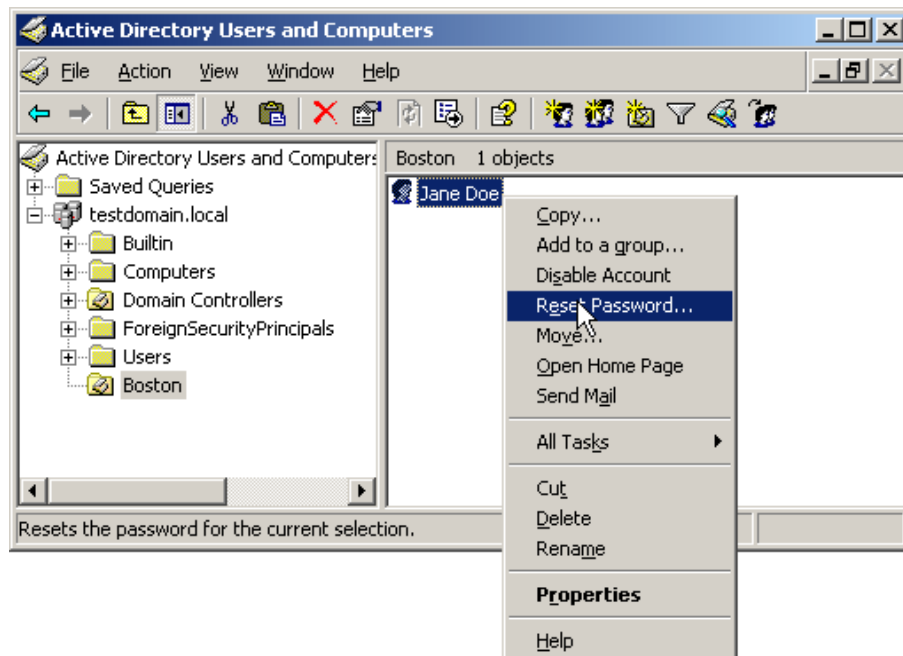


Figure No: 4.1

4.3 Self Service Password Reset Tools:

Resetting forgotten login passwords of area clients is a pivotal bottleneck, which an assistance work area specialist needs to deal with as a daily practice. A secret key reset ticket or an overlooked login secret key must be tended to inside minutes so as to dodge worker vacation and efficiency misfortune. It is evaluated that somewhere around 40 percent help work area tickets are identified with secret word resets and on a normal each change secret word ticket is tedious (around 20 minutes) in this way keeps the helpdesk from concentrating on all the more problems that are begging to be addressed.

A **self-service password reset solution** that enables an end client to self-reset his space secret word in windows dynamic index remotely from an internet browser without calling the helpdesk is a basic prerequisite. A self-administration secret word reset, and the board arrangement not just decreases the quantity of assistance work area secret word tickets yet in addition improves the profitability of an end client by turning away pointless and delayed pauses

CHAPTER-5

Implementation

5.1 Open Group Policy from Active Directory User and Computer:

To open Group Policy Editor from administrative tools we need to also open AD users and computers

1. Open AD users and Computers console.
2. Active Directory Users and Computers/domain/organizational unit/child organizational unit.
3. Press Properties button, and afterward press the GPO tab/
4. Do it one of the accompanying:
5. To alter a current GPO, press the Group Policy object in the rundown, and after that pressedit button.
6. To make another GPO, press New, need to type a name for the new GPO article, and after that pressedit button.
7. To open Active Directory Users and Computers, press Start, press Control Panel, double press Administrative Tools, and after that double press Active Directory Users and Computers.
8. You able to open GPO Editor in a few different way, contingent upon the activity which you need to shows and the article which you need to apply into thisGPO.

Details In Below:

1. Interface with your domain controller and open "Group Policy Management" (Press Start Menu -> Administrative Tools).

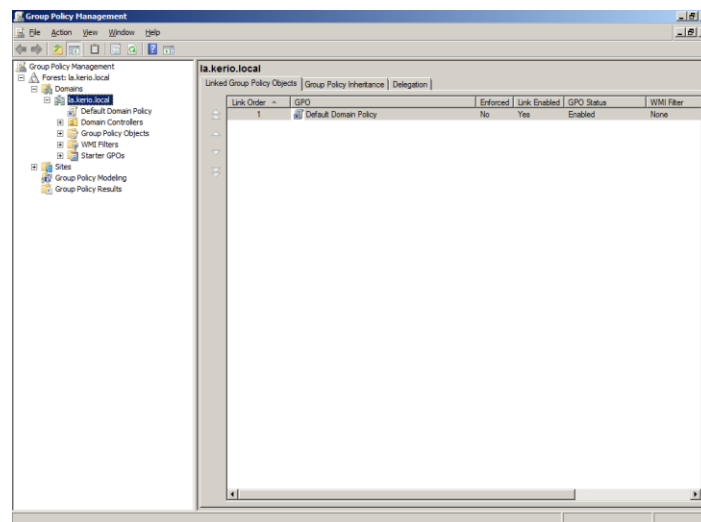


Figure No: 5.1

2. Mark the exact domain. From that point onward, Mark "Action" -> "Create a GPO in this domain, and Link it here..."

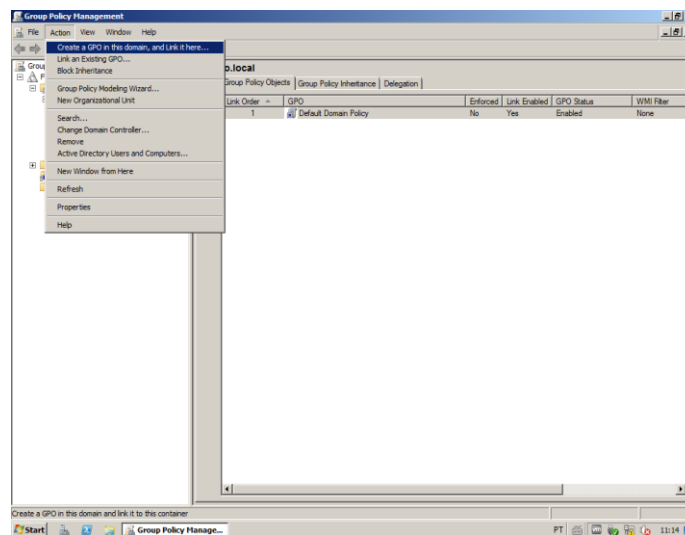


Figure No: 5.2

3. Give an appropriated name to this GPO.

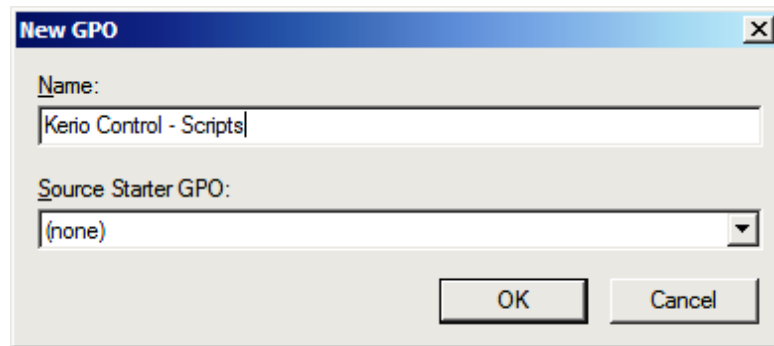


Figure No: 5.3

4. After creating the GPO, select "Action" ->"Edit...".

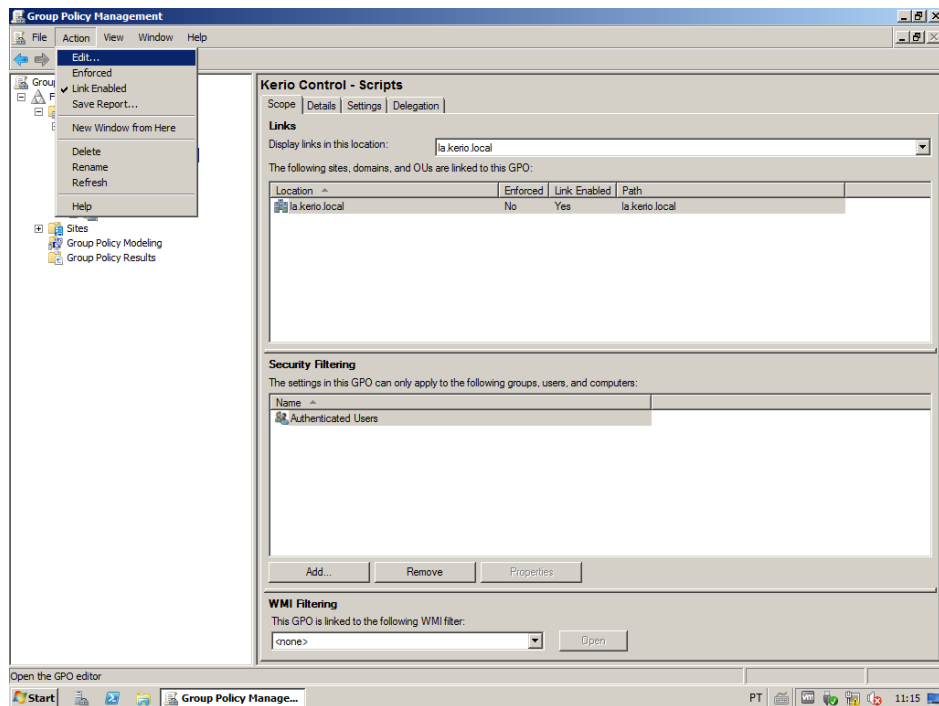


Figure No: 5.4

5. Select "Computer Configuration" ->"Policies" ->"Administrative Templates" ->"Windows Components" ->"Internet Explorer" ->"Internet Control Panel" ->"Security Page" ->"Internet Zone".

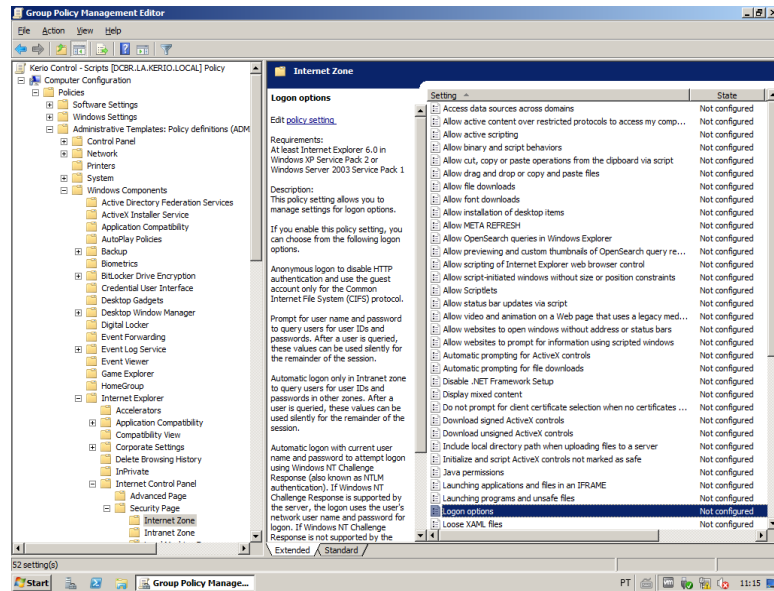


Figure No: 5.5

6. Mark "Logon options" with a double press and need to unabled the option and change the option to "Automatic logon with current username and password". Pres the button these progressions.

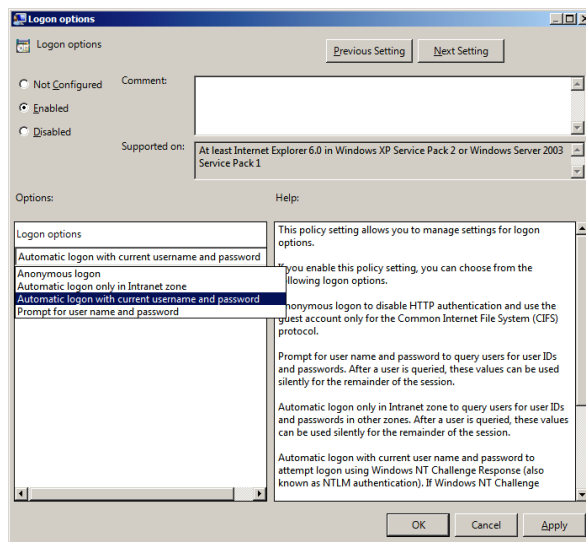


Figure No: 5.6

7. Select "User Configuration" ->"Policies" ->"Windows Settings" ->"Scripts (Logon/Logoff)".

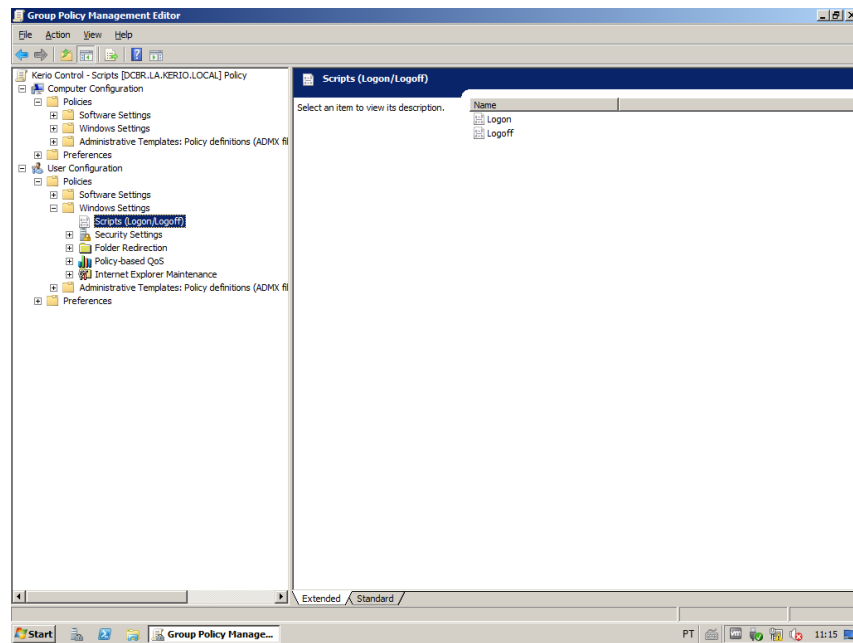


Figure No: 5.7

8. Need to selected "Logon" with a double press and need to press "Add...".

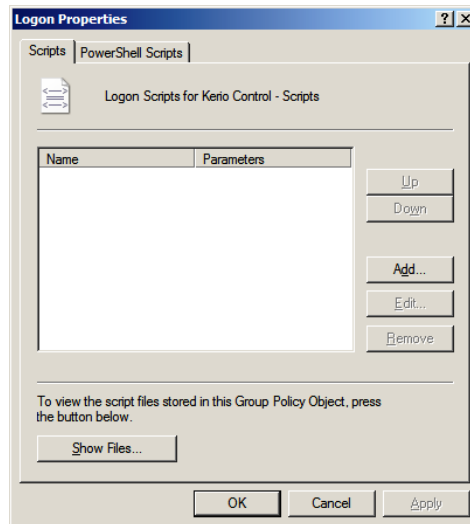


Figure No: 5.8

9. Click "Browse...".

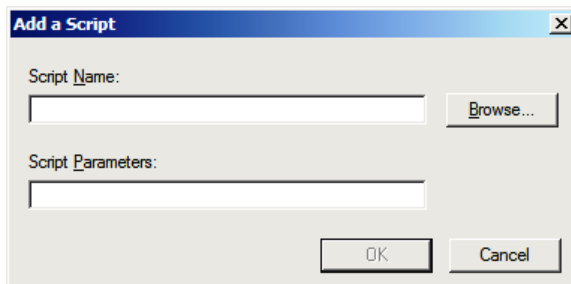


Figure No: 5.9

10. Make two files which name: logon.vbs and logon.bat. Utilize the code model underneath, need to change it the logon content way:

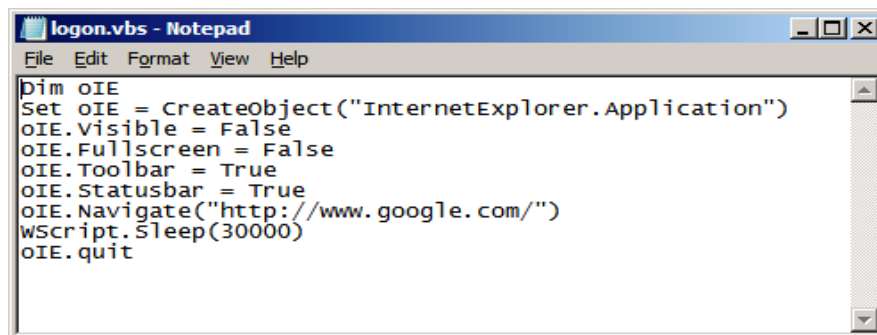


Figure NO: 5.10

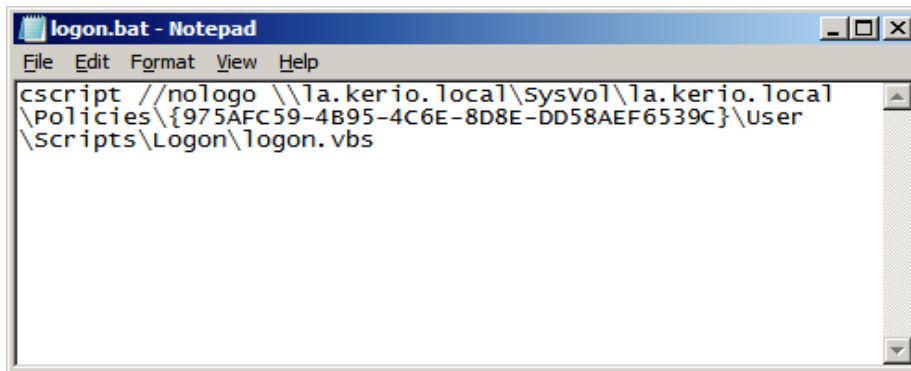


Figure No: 5.11

11. Select logon.bat with a double-press and press "OK" button.

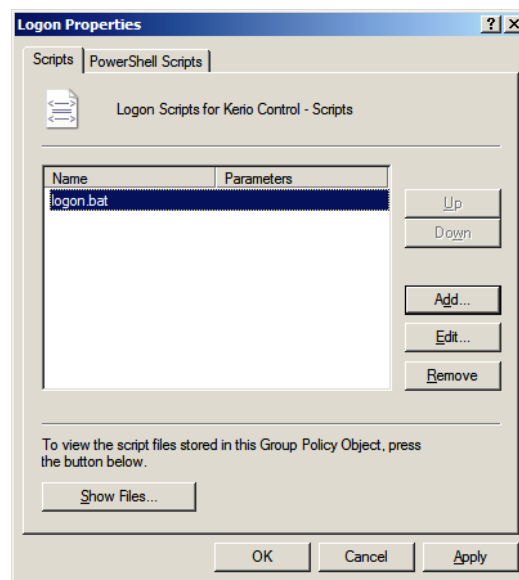


FIGURE NO: 5.12

12. Select "Logoff" with a dual-press and press "Add..."

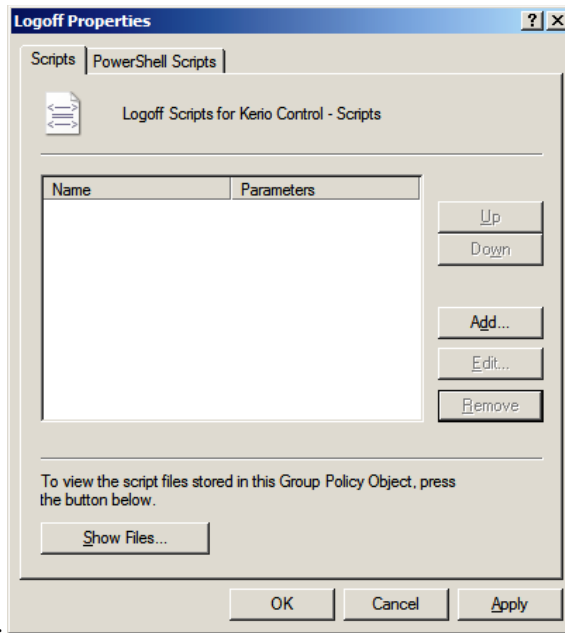


Figure No: 5.13

13. Press "Browse..."

14. Make two files which name is: logoff.vbs and logoff.bat. Utilize the code model beneath evolving the logoff script path:

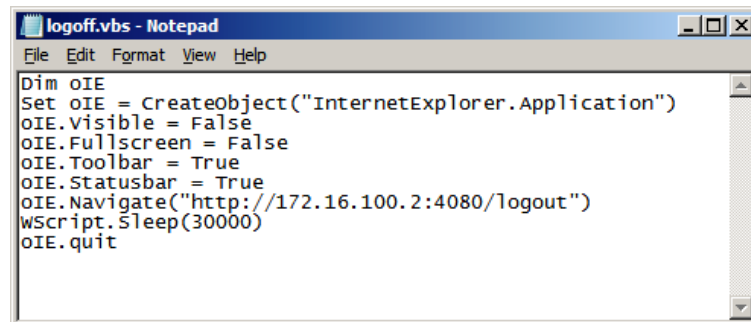


Figure No: 5.14

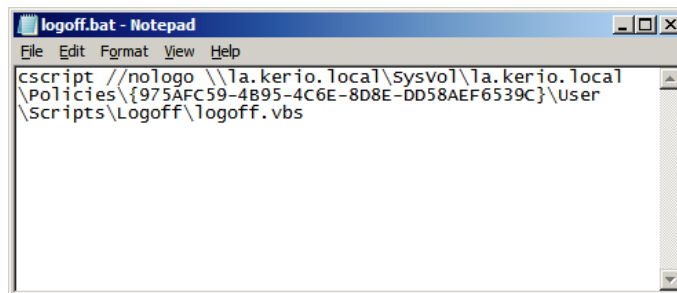


Figure No: 5.15

15. Choose logoff.bat file with a dual click and press "OK".

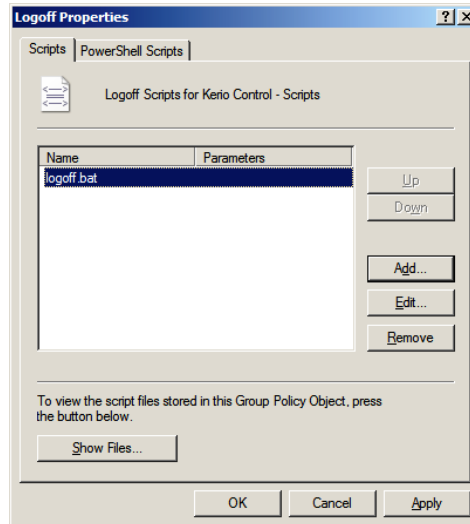


Figure No: 5.16

16. Twofold need to checking GPO settings and close "Group Policy Management".

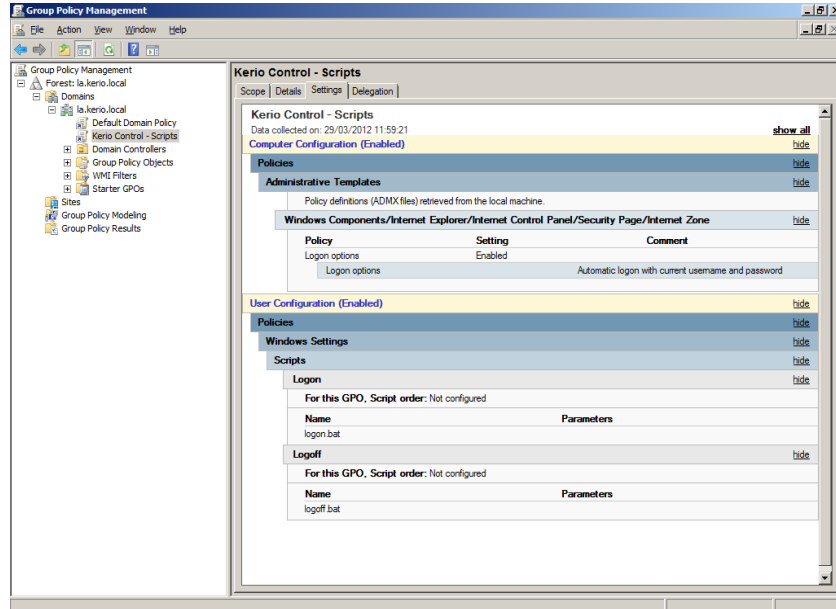


Figure No: 5.17

17. Open Kerio Control Web Administration Interface. Need to go to "Advanced Options" and prssdisable "Force SSL secured connection (recommended)". Press apply button for this changes.

For right scrambled correspondence it is needed to have confided in marked SSL endorsement for that URL of the Kerio Control web interface.

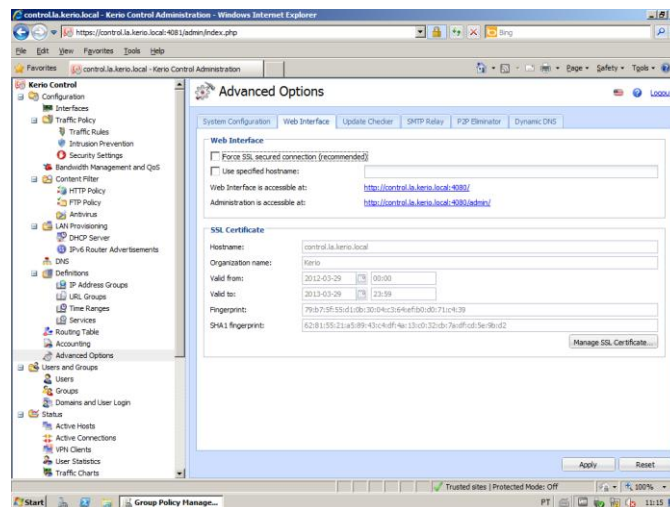


Figure No: 5.18

18. Go to "Users and Groups" ->"Domains and User Login" and need to enable "Always require users to be authenticated when accessing web pages" and "Enable user authentication performed automatically by web browsers". Press apply button for these changes.

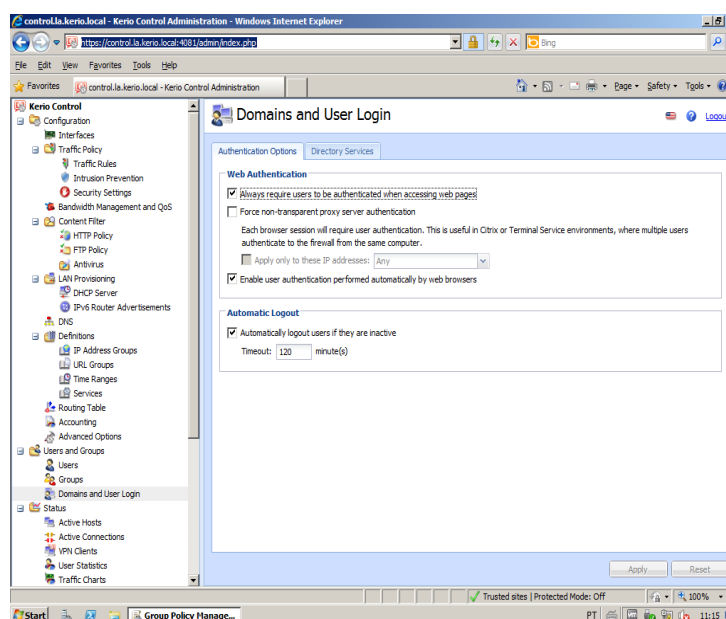


Figure No: 5.19

5.2 Desktop Wallpaper Group Policy:

To apply a "Work area Wallpaper" Group Policy setting, pursue these means:

1. Open the Group Policy Management Console.
2. In the GPO management Console, find the GPO Objects organizer, and after that select the Group Policy object (GPO) that you have made for the area clients.
3. Right-click the GPO that you have made for the area clients, and after that press Edit to open the GPO.
4. Grow User Configuration, extend Administrative Templates, grow Desktop, and after that click Desktop.
5. In the subtleties sheet, double tap Desktop Wallpaper.

Details of the standard phrasing this is utilized to depict Microsoft programming refreshes

Current path to the wallpaper file is \\Shares\COMMON\Images\Wallpaper\Background.bmp

5.3 Map Network Drives on Windows Clients Via GPO:

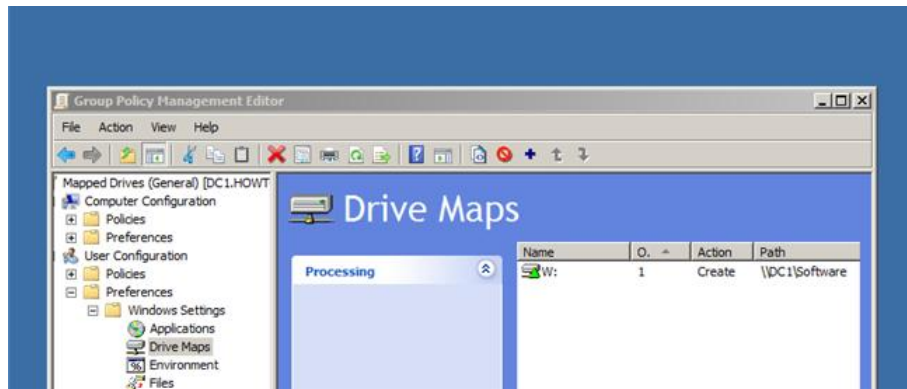


Figure No: 5.20

This is a piece of our continuous arrangement showing IT organization nuts and bolts, and probably won't make a difference to everyone.

Open the GPO Management Console via scanning for it from the windowsmenu.

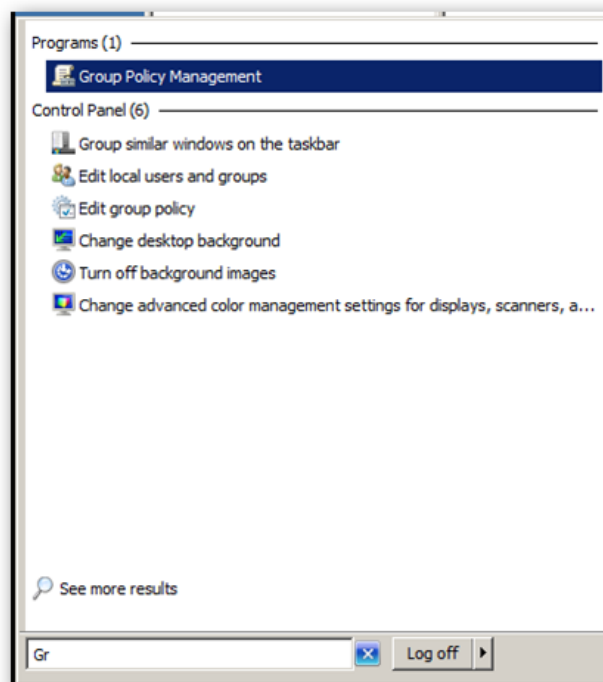


Figure No: 5.21

Even Though the OU in our precedent is known as the PCs OU it additionally consists a few clients. The Group Policy Setting that enables you to outline is a User setting and is consequently appointed at sign in; this implies the OU that you attach the GPO to ought to contain Users as opposed to just PCs.

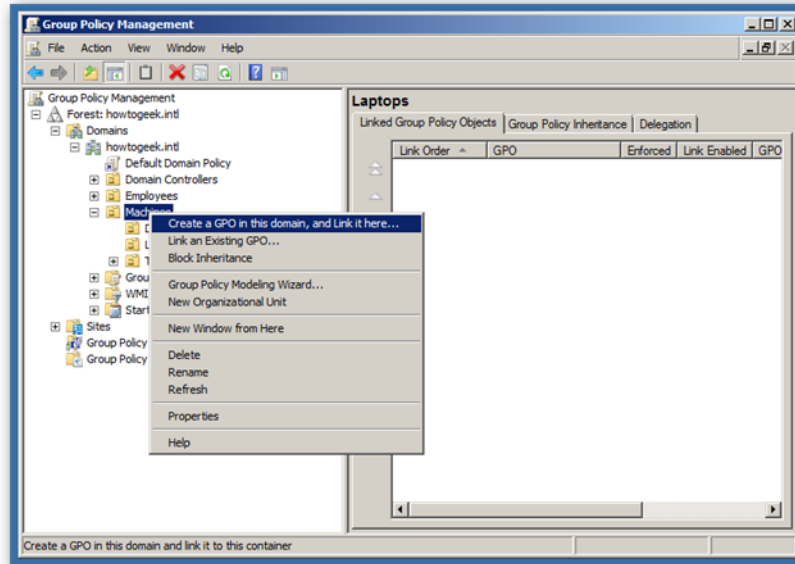


Figure No: 5.22

We need to enter a new policy name, we can name it name ours Mapped Drives (General).

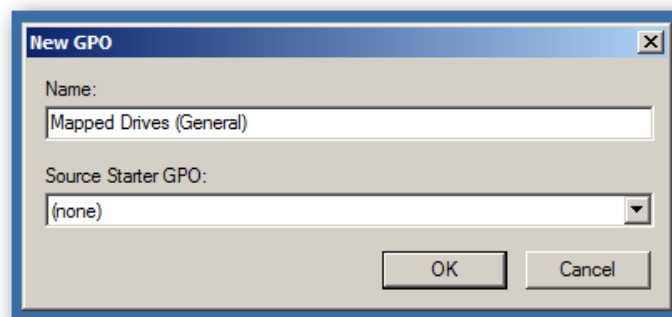


Figure No: 5.23

We can press the right button on the policy and choose the edit option.

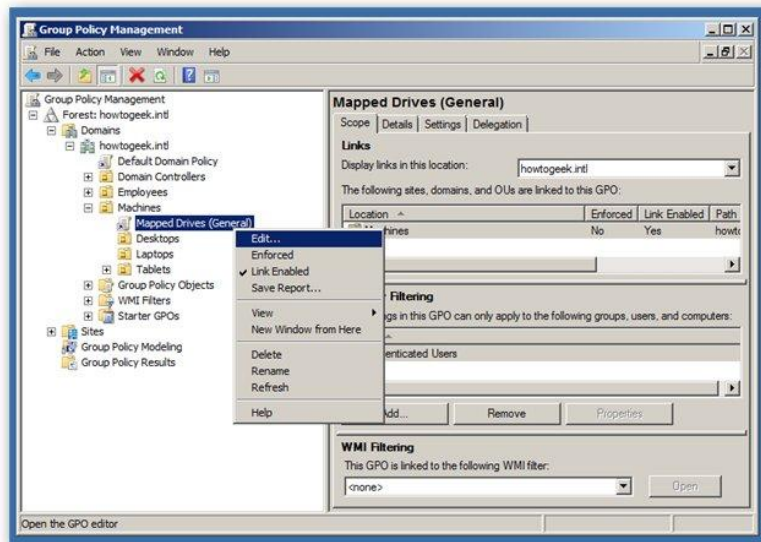


Figure No: 5.24

The arrangement is controls mapped drive is situated at

Client Configuration\Preferences\DriveMaps

You have to choose the arrangement and the button right snap in the void area and mark new mapped drive drive.

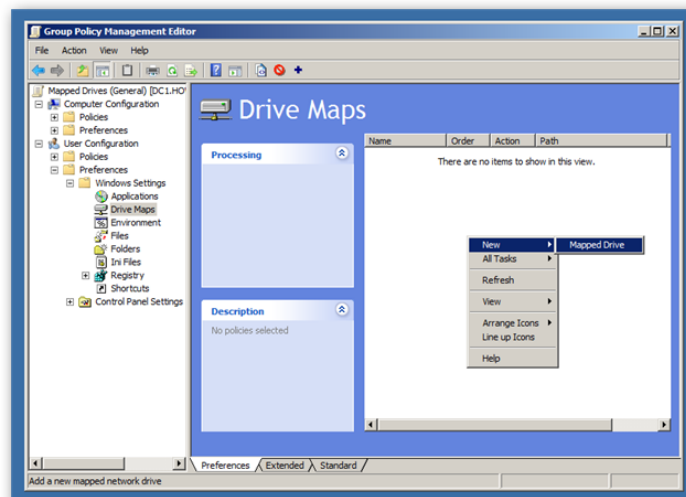


Figure No: 5.25

Need to change the activity to create, and need to type a location which will be your shared folder name

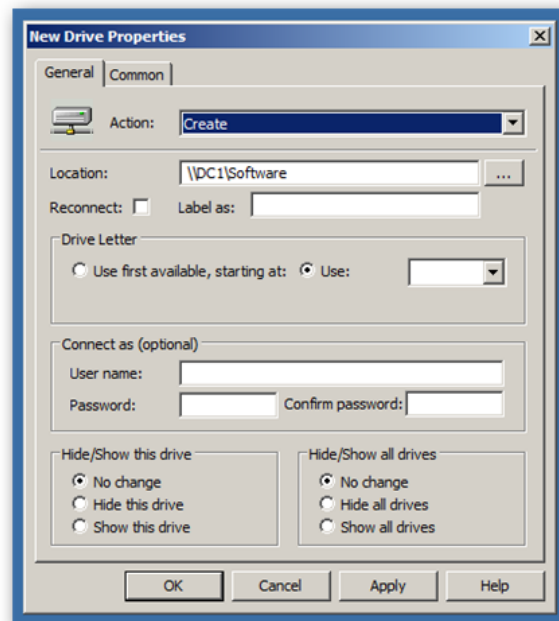


Figure No: 5.26

Presently give the name, this is the name that will appear on the drive in my PC. You will in like manner need to pick a drive letter, it is a best practice to pick a static letter in all cases, the definite inverse thing you need to do is change the radio catch at the base to Show this drive.

Presently when the client's logon the drives will be easily mapped.

CHAPTER 6

6.1 CONCLUSION:

Active Directory Rights Management Services is a data assurance innovation that works with empowered applications to help shield computerized data from unapproved use. Heads can plan and deal with their AD RAMS customer organization utilizing unique

Strategies and advancements, contingent upon their surroundings, and the customers and applications can be arranged by utilizing standard devices, for example, Group strategy Objects to address explicit issues. The general best practice for AD RAMS customer organization and design is to plan and test well, utilizing a lab or test condition before arrangement .By following the guidance given in this paper and utilizing the data given to legitimately arrange the AD RAMS customer as per your condition needs, you ought to have the capacity to acquire a consistent AD RAMS sending that empowers clients to effectively apply insurance to their records to conform to their organization's information protection needs.

6.2: Future Work:

- **Multinational company:** There are many multimedia companies which use the WINDOWS SERVER to control their users.
- **Government organization:** All government organizations also use the WINDOWS SERVER .By using WINDOWS SERVER they can protect their data or important things from the users and unauthorized access.
- **Educational institute:**WINDOWS SERVER is most important in educational institutions specially in all kinds of LA B
- **Private organization:**There is no sector where WINDOWS SERVER is not used.

CHAPTER 7

References:

1. Active Directory Domain Services 2008 by (John Policelli)
2. Active Directory Designing, Deploying and running Active DirectoryBy (Brain Desmond, Joe Richards, Robbie Allen and Alistair G Lowe-nurris)
3. Group Policy Fundamentals Security and the management Desktop By (Jeremy Moskowitz)
4. Active Directory Cookbook By (Brain Svidergol)
5. Active Directory Fast start, a quick start guide for active directory By (Smart Brain Training Solutions)
6. Group Policy Fast Start a quick start guide for a group policy By (Smart Brain Training Solutions)
7. Active Directory 4th edition and 5th edition By (O'Reilly Media)
8. Active Directory Administrator By (William Stanek)
9. Active directory for dummies by (Steve clines, Marcia Loughry)
10. Configuring windows server 2008 active directory by Dan Holme
11. Windows server 2012 by Rand Morimoto
12. Mastering Active Directory for windows server 2008 by John A. Price