

**INTERNSHIP ON IT DEPARTMENT BANK INFRASTRUCTURE**

**NETWORKING**

**Submitted by**

**Md. Rokibol Hasan**

**ID: 162-15-8260**

This Report Presented in Partial Fulfillment of the Requirements for the Degree of  
Bachelor of Science in Computer Science and Engineering.

Supervised By

**Tasnim Ahmed**

Lecturer

Department of CSE

Daffodil International University

Co-Supervised By

**Afsara Tasneem Misha**

Lecturer

Department of CSE

Daffodil International University



**DAFFODIL INTERNATIONAL UNIVERSITY**

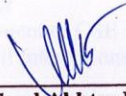
**DHANMONDI DHAKA BANGLADESH**

**September 2019**

## **APPROVAL**

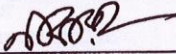
This Internship Titled “**Internship On IT Department Bank Infrastructure Networking**”, submitted by Md. Rokibol Hasan, ID: 162-15-8260 from Daffodil International University, Department of Computer Science and Engineering. It was acquired as a gratification for the sketchy fruit of the B.Sc. dimension affirmation. In the field of computing and engineering and chosen as to its style and table of contents. The presentation has been held on 13-09-2019.

## **BOARD OF EXAMINERS**

  
\_\_\_\_\_  
**Dr. Syed Akhter Hossain**  
**Professor and Head**

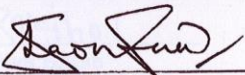
Department of Computer Science and Engineering  
Faculty of Science & Information Technology  
Daffodil International University

**Chairman**

  
\_\_\_\_\_  
**Narayan Ranjan Chakraborty**  
**Assistant Professor**

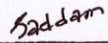
Department of Computer Science and Engineering  
Faculty of Science & Information Technology  
Daffodil International University

**Internal Examiner**

  
\_\_\_\_\_  
**Shaon Bhatta Shuvo**  
**Senior Lecturer**

Department of Computer Science and Engineering  
Faculty of Science & Information Technology  
Daffodil International University

**Internal Examiner**

  
\_\_\_\_\_  
**Dr. Md. Saddam Hossain**  
**Assistant Professor**

Department of Computer Science and Engineering  
United International University

**External Examiner**

## DECLARATION

I hereby declare that this report was made by me Rokibol Hasan, ID: 162-15-8260 under the supervision of **Tasnim Ahmed, lecture, Department of CSE** Daffodil International University. I also announce that I compile this information from the Motijheel Dhaka, Head Office of my internship organization Sonali Bank Limited.

Supervised by:

atun 14/09/19

**Tasnim Ahmed**  
Lecturer  
Department of CSE  
Daffodil International University

Co- Supervised by:

Aisara Tasneem Misha 14.09.2019  
**Aisara Tasneem Misha**  
Lecturer  
Department of CSE  
Daffodil International University

Submitted by:

Rokibol  
**Rokibol Hasan**  
ID: 162 -15-8260  
Department of CSE  
Daffodil International University

## ACKNOWLEDGEMENT

First we convey my heartfelt thanks and gratitude to Almighty God for His divine blessing that makes it possible for us to effectively finish the final year internship.

We really grateful and wish my profound my indebtedness to **Tasnim Ahmed, Lecturer**, Department of CSE Daffodil International University, Dhaka. Deep Knowledge & keen interest of my supervisor in the field of “Internship On IT Department Bank Infrastructure Networking” to carry out this internship. His endless patience, scholarly guidance, continual encouragement, constant and energetic supervision, constructive criticism, valuable advice, reading many inferior draft and correcting them at all stage have made it possible to complete this internship.

We would like to express my heartiest gratitude to the Almighty Allah and Head, Department of CSE, for his kind help to finish my internship and also to other faculty member and the staff of CSE department of Daffodil International University.

We would like to thank my entire course mate in Daffodil International University, who took part in this discuss while completing the course work.

Finally, we must acknowledge with due respect the constant support and patients of my parents.

## **ABSTRACT**

This internship piece of news is for thoroughness of my B.Sc. at Daffodil International University. For this internship program "Network Infrastructure" at a indicated confederation Sonali Bank Limited Head Office.

When two or more computers are interconnected network and able to communicate data or information then we call network. We need some special 'PC' are called Server to exchange data or information from one to another 'PC'. There are various types of servers. For example: Active Directory, DHCP server, DNS server, Proxy server, Mail server, Firewall, Router, VLAN, VPN, SMTP, Solar Winds, Networking Security, Networking monitoring tools, LVMS, FTP server. It is not sufficient to sustain a network because each of them works separately. If network is associated to the internet access and we want to invulnerable information we must need to know about Network Infrastructure. That's why I choose this subject of my report. This Internship helps me to gather omnifarious working Knowledge in networking sites, increases skill of community. Furthermore in addition, I tried on to impending in case internship was a successful.

# TABLE OF CONTENTS

<b>CONTENTS</b>	<b>PAGE</b>
Board of examiners	i
Declaration	ii
Acknowledgements	iii
Abstract	iv

## CHAPTER

<b>Chapter 1: Introduction</b>	<b>1-3</b>
1.1 Introduction	1
1.2 Motivation	1
1.3 Internship Objectives	2
1.4 Introduction to the Company	2
1.5 Report Layout	3
<b>Chapter 2: Organization</b>	<b>4-8</b>
2.1 Introduction	4
2.2 Product and Market Situation	5-6
2.3 Target Group	7
2.4 SWOT Analysis	7-8
2.5 Organizational Structure	9

<b>Chapter 3: Tasks and Activities</b>	<b>10-27</b>
3.1 Daily Task and Activities	10-26
3.2 Events and Activities	27
3.3 Task and Activities	27
3.4 Challenges	27-29
<b>Chapter 4: Competencies and Future Plan</b>	<b>30-32</b>
4.1 Competencies Earned	30-31
4.2 Future Plan	32
4.3 Reflections	32
<b>Chapter 5: Conclusion and Future Career</b>	<b>33-33</b>
5.1 Discussion and Conclusion	33
5.2 Scope for Further Career	33
<b>Reference</b>	<b>34</b>

## LIST OF FIGURES

FIGURES	PAGE NO
Figure: 2.5 Organizational Structure	8
Figure: 3.1.3 Traditional Network Diagram	10
Figure: 3.1.4 Modern Network Diagram	11
Figure: 3.1.5 Mikro Tik Router Diagram	12
Figure: 3.1.6 Router Diagram	13
Figure: 3.1.7 Server Diagram	14
Figure: 3.1.8 Firewall Diagram	15
Figure: 3.1.9 TCP/IP Diagram	16
Figure: 3.1.10 Ethernet Cable Diagram	17
Figure: 3.1.11 Cable Tester Diagram	18
Figure: 3.1.12 Network switch Diagram	19
Figure: 3.1.13 Local Area Network Diagram	20
Figure: 3.1.14 Metropolitan Area Network Diagram	21
Figure: 3.1.15 Wide Area Networking Diagram	22
Figure: 3.1.16 Network Access Control Diagram	23
Figure: 3.1.17 Virtual Private Network Diagram	24
Figure: 3.1.18 Variable length subnet mask Diagram	25
Figure: 4.1 Connection Time Out	31



# Chapter 1

## Introduction

### 1.1 Introduction

Network scheme similar structure is the procurement of unconnected interchange schemes, inspiration frameworks, transferring stations, branch stations and external intelligence equipment normally provided for interconnection and inter-performance characteristics of a league mold.

Today all Bangladesh's banking craft are thriving day by day in the competitiveness clop. Sonali Bank Ltd Bank, it is circumstances in Bangladesh owned mercantile bank. Every day Sonali Bank tries to fabricate with another federation above a brawny.

The network manner was not so consistent with their affiliate at the beginning. But now days all branches of Sonali Bank are closely connected with others. There are daily efforts to upgrade their network with fresh processing and ingredients. And their powerful networking technique will make extremely rapid use of the bonding.

### 1.2 Motivation

Practice is not only a gift of knowledge, but also a student's rehearsal of how to vouchsafe, how to operate properly, how to maintain office. I am a teacher on myself as an intern. Practice gives me a gigantic awareness, increased networking skills and how to maintain this duty in its entirety.

An internship can commit a student to become an accountant. A student can have knowledge through internal function ate. As a result, internship falls within the power. Networking in the first world is rising immoderately and it is appropriate in my nation formerly for this purpose. Without strong networking, brainchild tracing kilter "Digital Bangladesh" is not permitted.

### **1.3 Internship Objectives**

Primary recognize instant postulate and, moreover, to equip myself as a skilled person in the centered job market. Practice is extremely inevitable for knack upliftment. The mere foundation is to obtain whatever exceptional multiplication and tangible life work sagacity in order to prove myself as an effective one internship. This tidings grant an ordinary program I have been operating on during my internship at Sonali Bank Ltd, IT Division. The study's primary aim is to discern the thorough process of consolidating the network, realizing of, perceiving about Sonali Bank Ltd Extrinsic varied communication process, knowledge of neoteric arsenal and techniques, and knowledge of formal working atmosphere. I have advised the creation of a local area network, Router configuration, Switch configuration, Networking support Branches, Juniper networks, VLAN, Firewall, Logical Firewall, Logical Router, Server, Wide area Network, OSI Layer, TCP/IP, VLSM, Network Address, Broadcast Address, Cable setup, Data center, VPN, LVSM, Solar winds, Virtualization LAN, Virtualization MAN, Virtualization WAN, Data center network Virtualization, Network Function, Network device & client end physical and logical support.

### **1.4 Introduction to the Company**

Not long the of the country Sonali Bank as the maximum state overwhelmed business bank by decree of the Banks Nationalization Oder (1972 Presidential Order 26) selling the then Bank of Prime. As a fully state vindicate institution, the bank has been forsaken by permeated government syntactic distinguishable financial plans from its country-building responsibilities just as the currency disseminates acts of its own volition covering all economic circles.

The Bank has been reciprocally transferred to a public limited company with a 100% public obligation and has started to work as Sonali Bank Limited on all conveniences Sonali Bank's debt and business. After corporation, the bank's navigability has been provided expectant solvency to render the bank incursive and to maintain its company practically.

## **1.5 Report Layout**

The report is arranged as follows Chapter-1: Introduction with Introduction, Motivation, Practice Objectives, Introduction to the Company, provides why I choose Practice. Chapter-2: Sonali Bank Limited, Target Group, SWOT Analysis, Product and Market Situation, Organizational structure what kinds of services in Bangladesh and IT networking techniques do they provide to customers and job market roles? Chapter 3: is about Network Provider Sonali Bank, Daily Tasks and Activities, Challenges to their software, and my training and activities. Chapter 4: Earned skills, Future plan, Reflections. Chapter-5: Discussion and Conclusion & Scope for Further Career.

## Chapter 2 Organization

### 2.1 Introduction

Not long of the country Sonali Bank rose as the state overwhelmed business bank by decree of the Banks Nationalization Order. As a fully state vindicate institution, the bank was forsaken by permeated government syntactic distinguishable financial plans from its country-building responsibilities just as the currency spreads acts of its own will covering all economic circles.

The Bank has been reciprocally transferred to a public limited company with a 100% public obligation and has started to work as Sonali Bank Limited on all conveniences since 15 November 2007. Sonali Bank's indebtedness and company. After corporation, the bank's navigability has been provided expectant solvency to render the bank incursive and to maintain its company practically. The Chairman's name is Mr. Md. Ashraful Moqbul (Chairman) Obayed Ullah al-Masud (General and CEO). Sonali Bank branches: Sonali Bank has a total of 1215 branches. Of these, 467 are located overseas (India) in metropolitan areas, 746 and 2. Sonali Bank with the seller, Sonali Bank Information Technology Division divided into 5 divisions:

**Business IT:** Business IT Division exhibits business. They develop business information technology.

**IT Services Management:** They give ministry to all branches. They are all branches 'propulsion and assist them.

**Infrastructure IT:** IT infrastructure Hardware, software, network infrastructure, data center, equipment and related equipment for the creation, testing, operation, tracking, management and service:

**IT procurement & Maintenance:** They sign contracts with vendors.

**IT Security:** The banking system is extremely impermeable by Sonali Bank IT.

## **2.2 Product and Market Situation**

- Sonali Deposit Scheme
- Education Deposit Scheme
- Medicare Deposit Scheme
- Monthly Earning Scheme
- Marriage Saving Scheme
- Rural Deposit Scheme

### **Market Situation:**

Business in banking turns out to be an umbilicus every day. Each bank has its own key to exalt. Since a ton of ingenious and viable supporting a steering to have a company whereabouts market. We should now supervise the ameliorated dilution of Sonali Bank.

### **Product:**

Item is anything that can be granted to a market for judgment, procurement, use or use, and that must satisfy a desire or need. Levels of items could follow ramification:

- AUGMENTED PRODUCT
- ACTUAL PRODUCT
- CORE PRODUCT

Today, banks are expanding their product to pull customers and adapting to changes in customer requests. Sonali Bank still provides vital and common products. Despite the reality that Sonali Bank has a few products, it has numerous customers.

## **Pricing:**

Cost is the measure of a loaded product or benefit. Despite the reality that price in banking business is certainly not a prevalent element, it could be a good tool. A variable valuation of the bank is:

- INTEREST RATE
- TRANCATION
- PROCESSING FEE

Presently how about we take a gander at the radical remission of opening Sonali Bank account:

- FDR: A client needs to hold up under not many consumption contradict with different Banks to open a FDR with Sonali Bank.
- Customer account: A purchaser indispensable TK.1000 to open a Sonali Bank account.
- Saving account: The fundamental amount desiderate to open a Sonali Bank deposit account is just TK.500, That's very minute similar to other banks.

## **Service charge:**

Private banking administration fee is a burden on a client. Be that as it may, Sonali Bank seems to be very eleemosynary client by all accounts. It does not charge the protected administration fees.

## **Interest rate:**

Sonali Banks saving record financing costs is 8 percent. It gives 10 percent of the FDR effort. No intrigue is charged in the current rate.

## **Promotion:**

Progress has become a major component of the current endeavor. A good device does not use any promotion. It furnishes customers with a flyer and leaflet to let customers think about their product. It does not stress the methodology of similarity as its competitors do.

## 2.3 Target Group

Committed to expand value products that assist individuals with distinctive requirements to precede their life, create a stimulus for partners and contribute to the social-monetary upliftment of the nation. Then there is some intention of Sonali Bank Ltd:

- Transformation into an administrative innovation motivated the Bank's profit gain.
- Ensure fast, accurate and top-level client administration.
- Procedure for balanced and suitable growth.
- Introduction of inventive banking products.
- Attract and retain brilliant human assets.

## 2.4 SWOT Analysis

A SWOT (Strengths, Weaknesses, Opportunities and Threats analysis). There is an assessment of strengths, weaknesses, possibilities and threats in the business (think: reputation, patents, location).SOWT experiment is an important instrument for the execution of an association.

### **Strength:**

- Dedicate Customer administration/bolster division.
- Elasticity.
- Dedicated, eager staff.

**Weakness:**

- No Direct Client Sell Interaction.
- Understanding at the stage of administration should be increasingly dynamic.
- Desire more IT person.

**Opportunities:**

- Internet user is progressive instantly.
- The ministry of the Internet is becoming prevalent to us.
- Sonali Bank has a huge amount of clients.

**Threats:**

- Hostile circumstance of the promise.
- More acceptance tool.
- New procreation Private Bank prefers similar to Sonali Bank.



## 2.5 Organizational Structure:

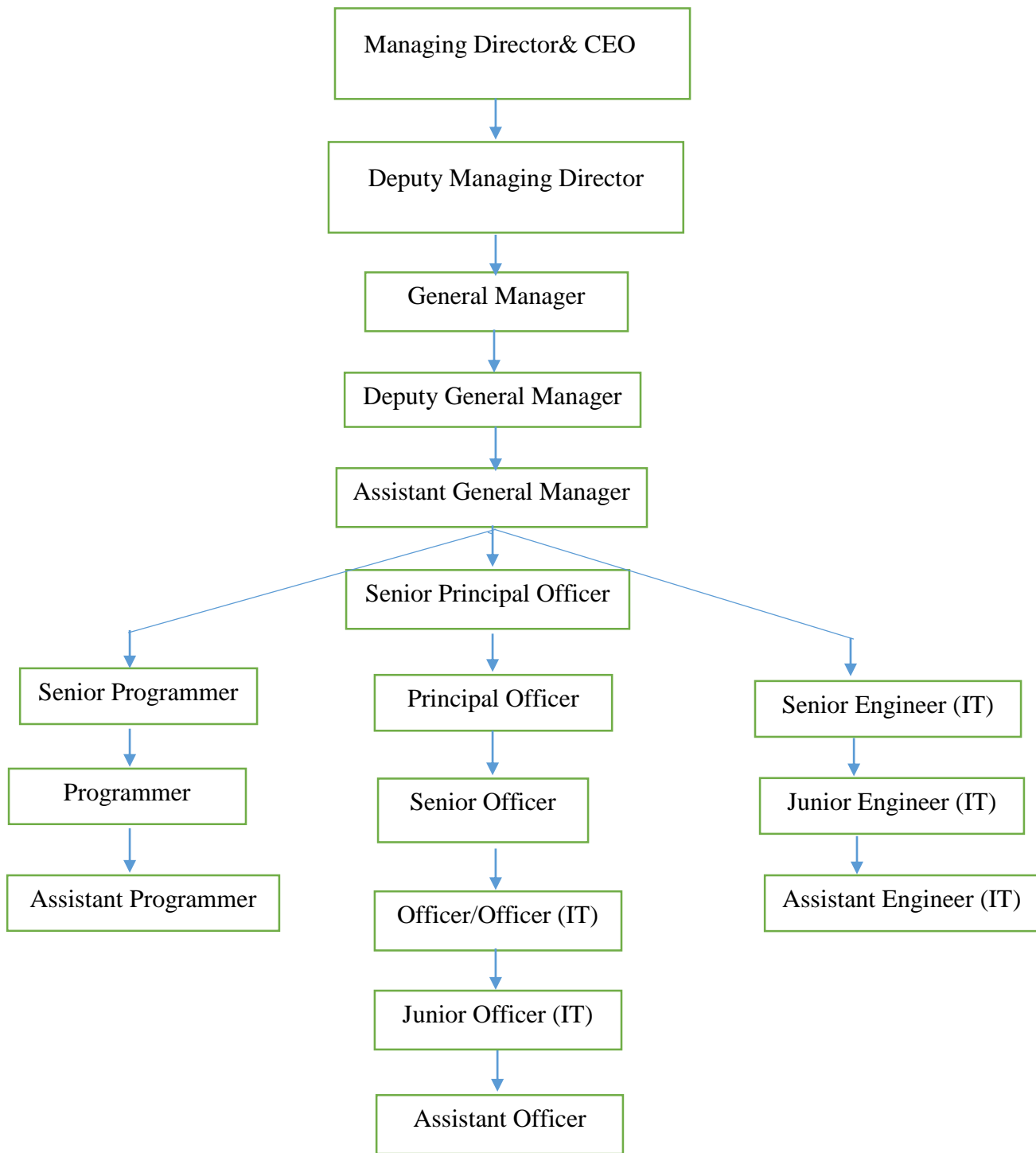


Figure: 2.5 Organizational Structure

## **Chapter 3**

### **Tasks and Activities**

#### **3.1 Daily Task and Activities**

##### **Sonali Bank Service Provider With Vendors:**

- GP+AGNI
- GP+ADN
- AGNI
- ADN
- BRACNET
- DRIK-ICT
- BDCOM
- METRONET
- RANKSIT

##### **3.1.2 Link Vendor Management System (LVSM)**

Information about the Association Link Vendor Management System (LVSM) is obtained in mechanized structure in backend databases instead of gigantic papers. Similar programming can be generated available through a WAN in various areas of a bank. A Framework Partner Association IP address from the ISP Provider interface. Any portion of the bank interface is down or moderate. The following features should be a Link Vendor Management System (LVSM) software: Query, Update, Report, Web Report, Report Archive, Down Time, Complaint Graph, KPI Graph, Edit Contact, IP Change.

### 3.1.3 Traditional Network

For instance, conventional systems rely on physical frameworks to create connections and function properly. By contrast, a product-based scheme allows the customer to regulate the allocation of property through the control plane at a virtual level.

Usually, datacenter organizes foundations for huge organizations or large process ranches depending on a three-layer progressive model, which Cisco calls the "multiple leveled between system administration models Access layer switches are often located at a rack's highest point, otherwise they are called switches. Today, most system frameworks are still distributed along these lines. The greatest guarantee of distinguished programming organization (SDN) is that it brings together and breaks the management of big business agreements by the board. Flowing a Figure:

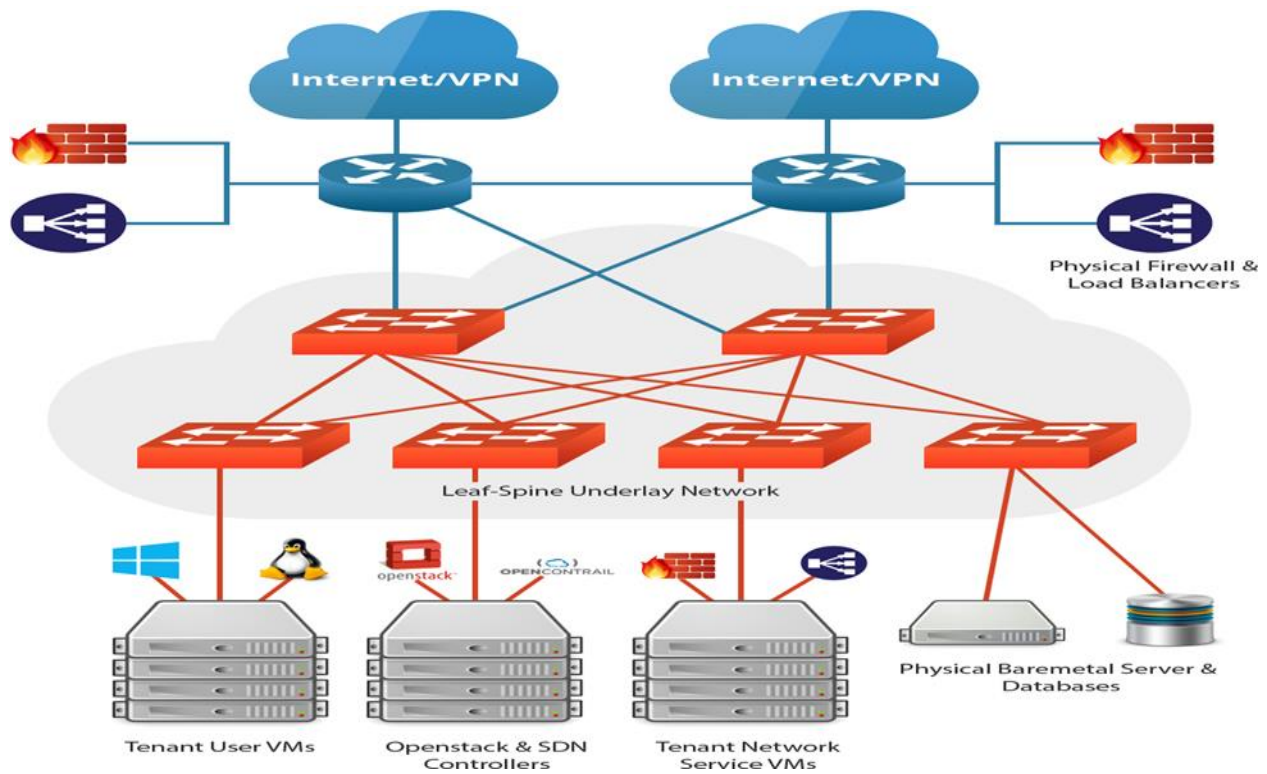


Figure: 3.1.3 Traditional Network Diagram

### 3.1.4 Modern Network

Current system developments provide the vital framework for information and correspondence frameworks in today's medical clinic, two developments assume the true role of structure undertaking technologies: the Ethernet family, in terms of edge exchange, and ATM, in terms of cell exchange. There is a reiteration of concepts that characterize an sophisticated system, from fundamental norms to complete capacities.

To help these necessities in one model, you would start with a genuine three-level Clos exchange design to build a server farm arrangement with ToR, spine, and texture layers. Each ToR approaches different textures and can choose an optimal manner depending on the need for implementation or accessibility of the scheme. Flowing a Figure:

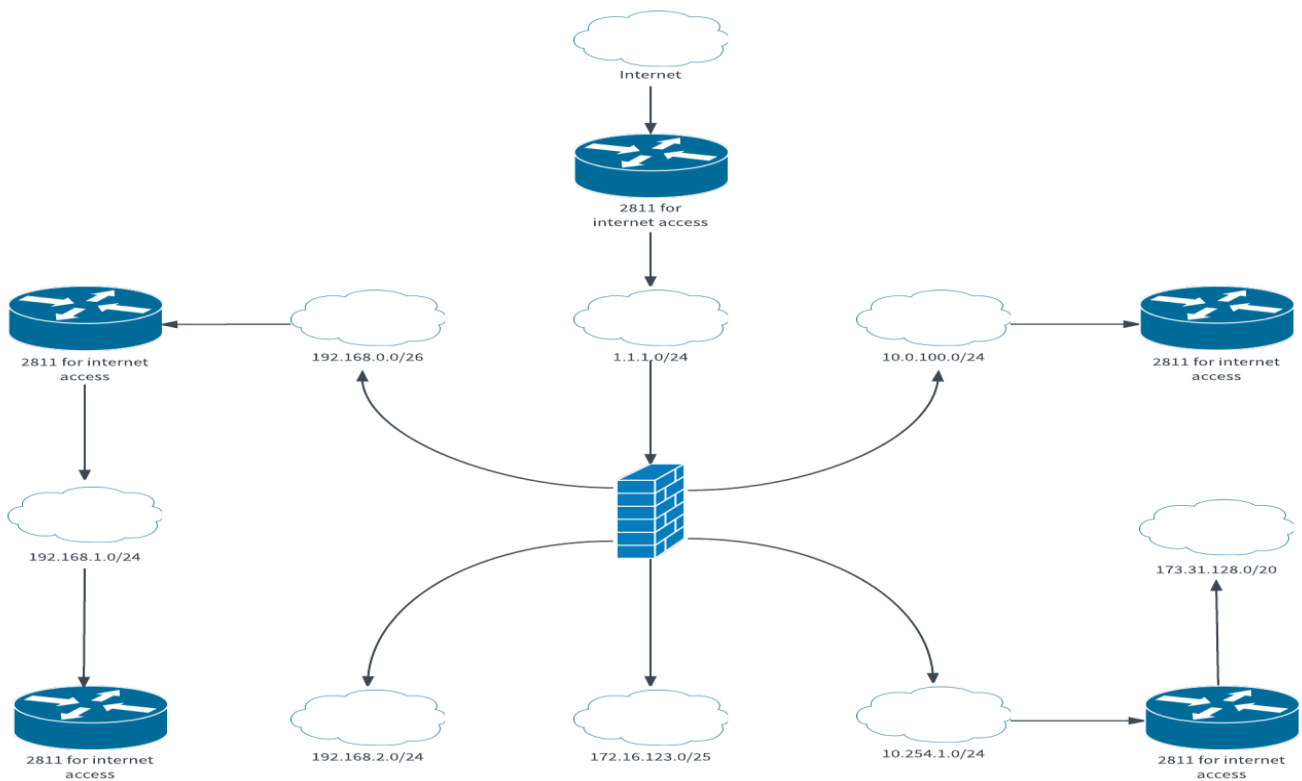


Figure: 3.1.4 Modern Network Diagram

### 3.1.5 Mikro Tik Router

Mikro Tik Router OS is the Mikro Tik Router board equipment operating agreement. It can also be implemented on a PC and transformed into a switch with all the essential highlights of the executives ' steering, firewall, information transfer ability, Remote passage, backhaul connection, hotspot portal, VPN server and the sky is the limit from there. Enter the ip address in your program to get to the switch. The Principle Router OS page will appear as in the screen shot below. Nap from the rundown on Web Fig. To get to the setup interface, to login and secret key.

Mikro Tik Router OS turns a normal PC into a system switch. Simply add normal system PC interfaces to increase switch capabilities. Remote control with a straightforward real-time Windows implementation (Win Box). Flowing a Figure:



Figure: 3.1.5 Mikro Tik Router Diagram

### 3.1.6 Router

A router is a device that forwards data packets along networks. A router is connected to at least two networks, commonly two LANs or WANs or a LAN and its ISP's network. Routers are located at gateways, the places where two or more networks connect.

The router, at least the common home network device that we usually call a router, is the piece of network hardware that allows communication between local home networks like personal computers and other connected devices and the internet. The router used in home and small networks is more accurately called a residential gateway but you'll never see them called that. Flowing a Figure:



Figure: 3.1.6 Router Diagram

### 3.1.7 Server

A server is a computer, a device or a program that is dedicated to managing network resources. Servers are often referred to as dedicated because they carry out hardly any other tasks apart from their server tasks. There are a number of categories of servers, including print servers, file servers, network servers and database servers. In theory, whenever computers share resources with client machines they are considered servers.

Popular server operating systems include Windows Server, Mac OS X Server, and variants of Linux such as Red Hat Enterprise Linux (RHEL) and SUSE Linux Enterprise Server. According to Spice Works, this list is the most deployed on-premises server operating systems (August 2016): Windows Server 2003. Windows Server 2008. Type of Service: Core Base Service, Data Base Service, Application Service, Mail Service etc. Flowing a Figure:

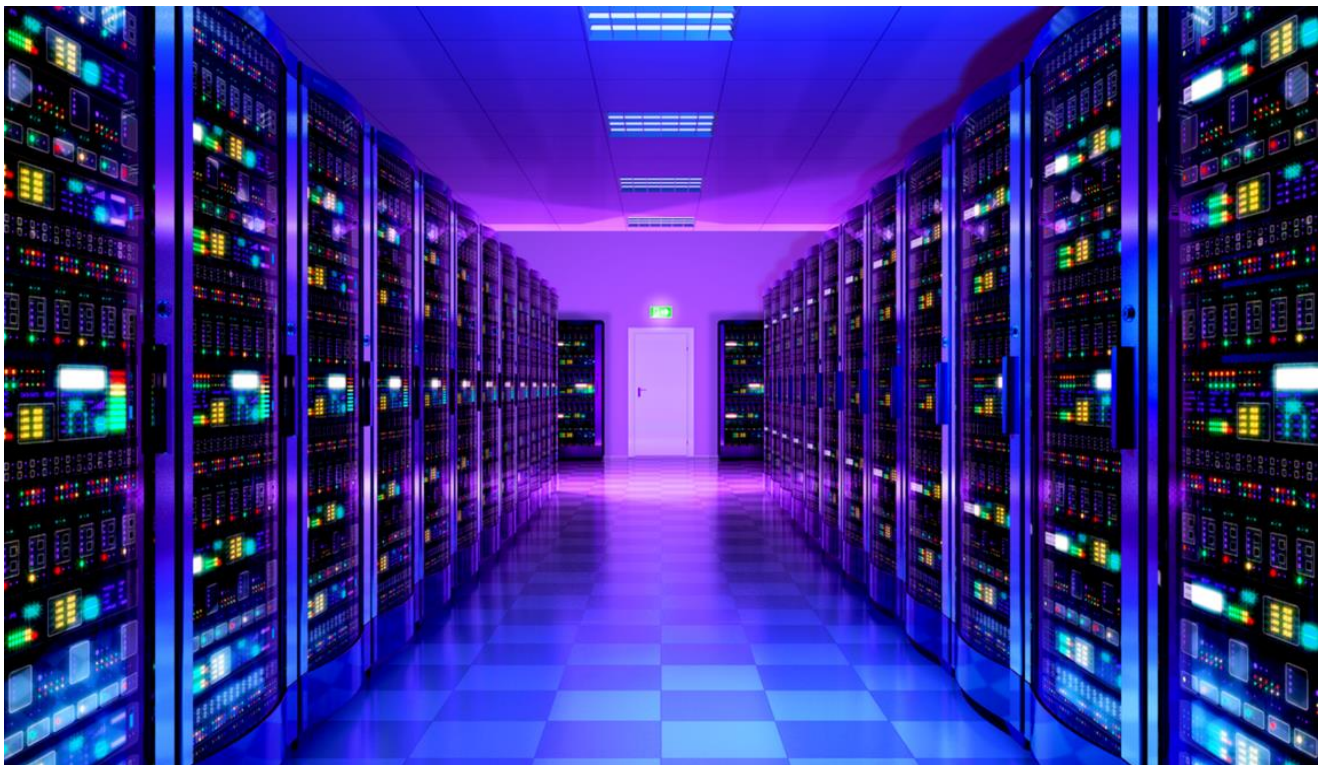


Figure: 3.1.7 Server Diagram

### 3.1.8 Firewall

A firewall may or may not have flourished in different hardware-based applications. Generally speaking, a gear-based firewall involves specific framework boxes, such as switches or switches, with altered hardware and programming. This type of firewall is regularly exorbitant, perplexed, and hard to structure. It is scheduled to allow or restrict information to proceed to a framework subject to a good deal of standard. There are five different types of firewall architectures, broadly speaking:

- Packet-filtering firewalls.
- Stateful inspection firewalls.
- Circuit-level gateways.
- Application-level gateways (a.k.a. proxy firewalls)
- Next-gen firewalls.

A firewall is used to shield a system from interruptions and simultaneously allow the passage of actual data. Typically a firewall should have two system deals at any level, one for personal system and one for open system exercises, such as the Internet. Flowing a Figure:

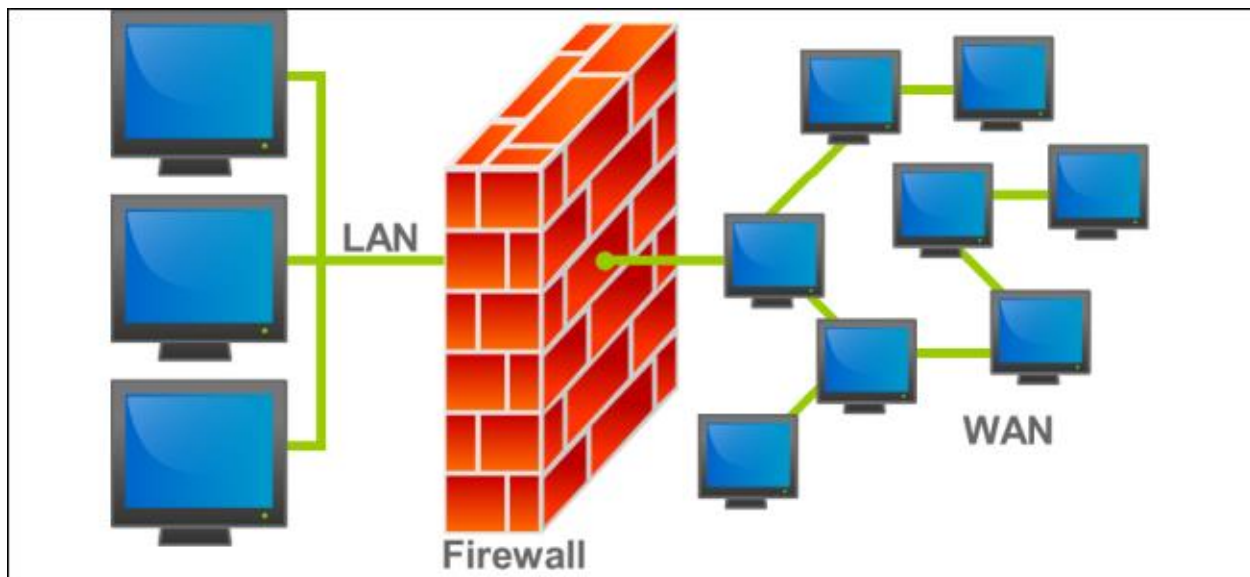


Figure: 3.1.8 Firewall Diagram



### 3.1.9 TCP/IP

(TCP/IP) is the used for Internet access by a PC. It includes a suite of conventions designed to create a service system to provide internet access to a host.

TCP/IP is accountable for the undeniable accessibility of data and the transmission of data by providing distinct capacities, including inclination, mapping and affirmation, to start finishing. TCP/IP comprises of four layers, somewhat distinct than the OSI model.

Innovation is common to the extent that the complete name would rarely be used. As such, the abbreviation is the term itself in the same manner at present. Flowing a Figure:

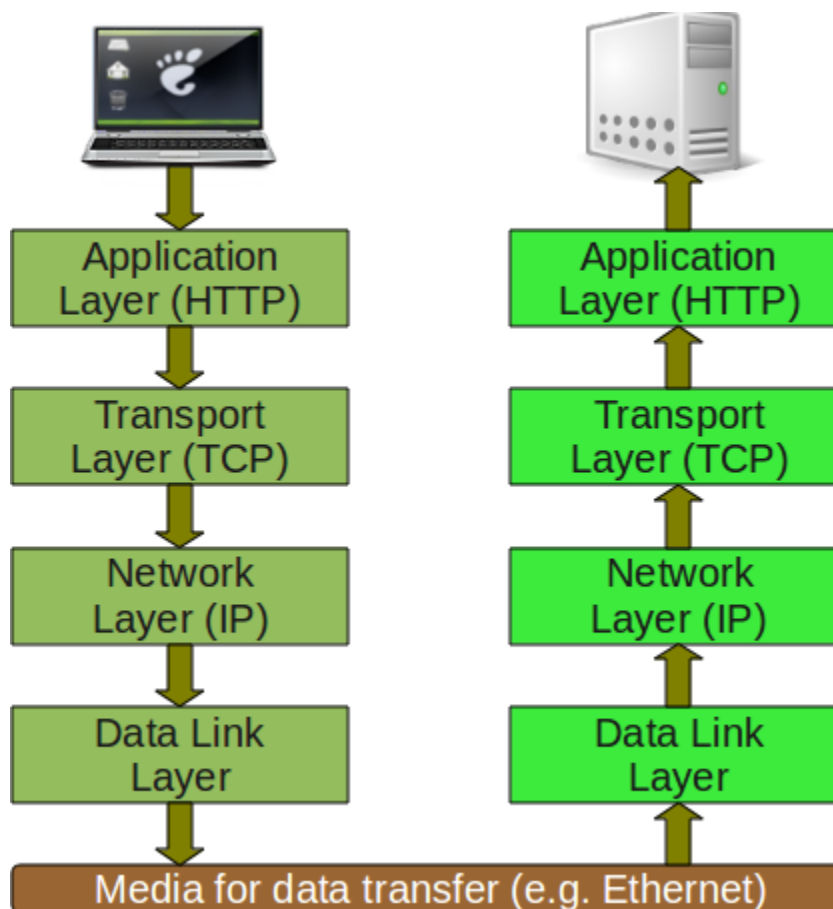


Figure: 3.1.9 TCP/IP Diagram

### 3.1.10 Ethernet Cables

Frequently referred to as a wired connection with the Internet, an Ethernet connection can be one of a few fundamental system connections used to get to the internet. Neighborhood, referred to as LANs, needs Ethernet connections to interfaces with PCs and switches. Ethernet connections support sector interventions either Category 5 (CAT5) or Category 6 (CAT6), now and then both. This fifth age of Ethernet bent pair development is usually normal. It supports Internet speeds of as fast as 100 Mbps through four sets of copper cables. The CAT6 links strategy produced them out of date.

Ethernet connections, such as extended telephone ropes fit as a fiddle and appearance, have RJ45 connectors to snare to a switch or powered gadget at each conclusion. Ethernet links are twice as wide as telephone strings because they have twice the same number of links. They plug in the back of a PC or the side of a PC and can also be used with gaming comforts. Once in a while, an LED marker light will streak for the purpose of touch to demonstrate an association. Flowing a Figure:



Figure: 3.1.10 Ethernet Cable Diagram

### 3.1.11 Cable Tester

A connection analyzer is a gadget used to assess the quality and accessibility of a particular type of link or other wired groups. There are different types of connection analyzers, each prepared to test a specific type of link or wire (some might test different types of connections or cables). A connection analyzer can check whether a connection or wire is properly set up, efficiently linked, and the quality of correspondence between source and target. The image is a case of a net link analyzer.

Since such a significant number of different types of information can be transmitted over a system link, it is important that the system link is properly associated between the PC and the server. In addition, guarantee that the sign quality between PCs is adequate to transmit data and that there is no external barrier causing loss of data or decrease in sign quality. Flowing a Figure:

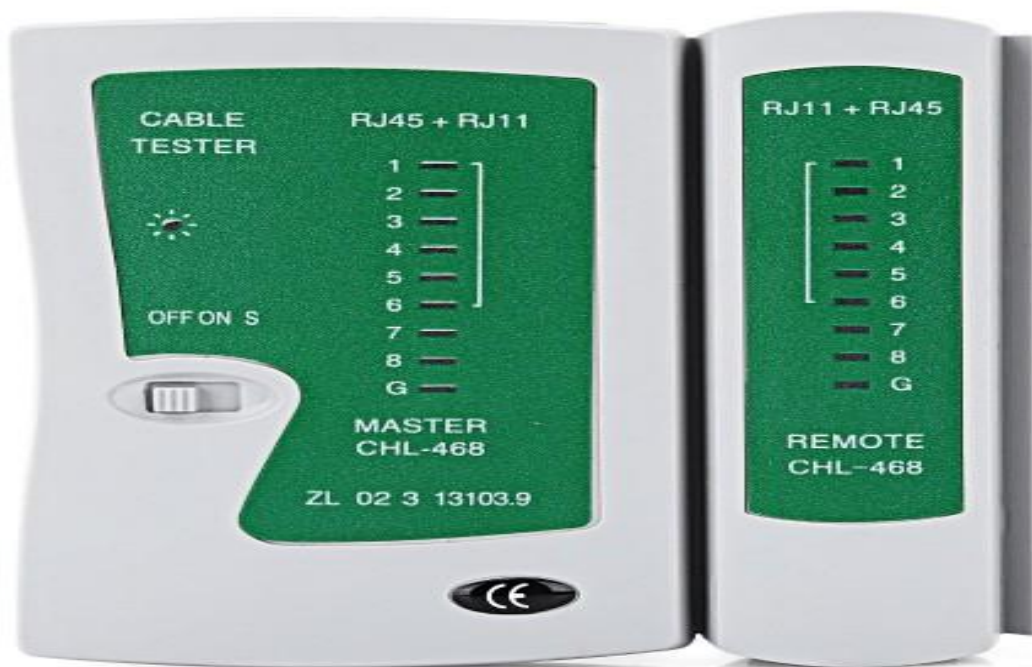


Figure: 3.1.11 Cable Tester Diagram

### 3.1.12 Network switch

A network switch (also known as switching hub, bridging hub, officially MAC Bridge) is a computer network device that connects devices to a computer network by using packet switching to receive, process and forward data to the destination device.

A network switch is a multiport network bridge that utilizes hardware addresses in the OSI model's information connection layer (layer 2) to process and forward information. In addition, some switches can process information on the network layer (layer 3) by adding routing features. Such switches are frequently referred to as multilayer or layer-3 switches.

Ethernet switches are the most prevalent type of network switch. Kaplan launched the first Ethernet switch in 1990. Switches also exist for other network kinds including Fiber Channel, Asynchronous Transfer Mode, and InfiniBand.

Unlike less sophisticated repeater hubs that transmit the same information from each of their ports and allow the appliances to decide what information they need, a network switch. Flowing a Figure:

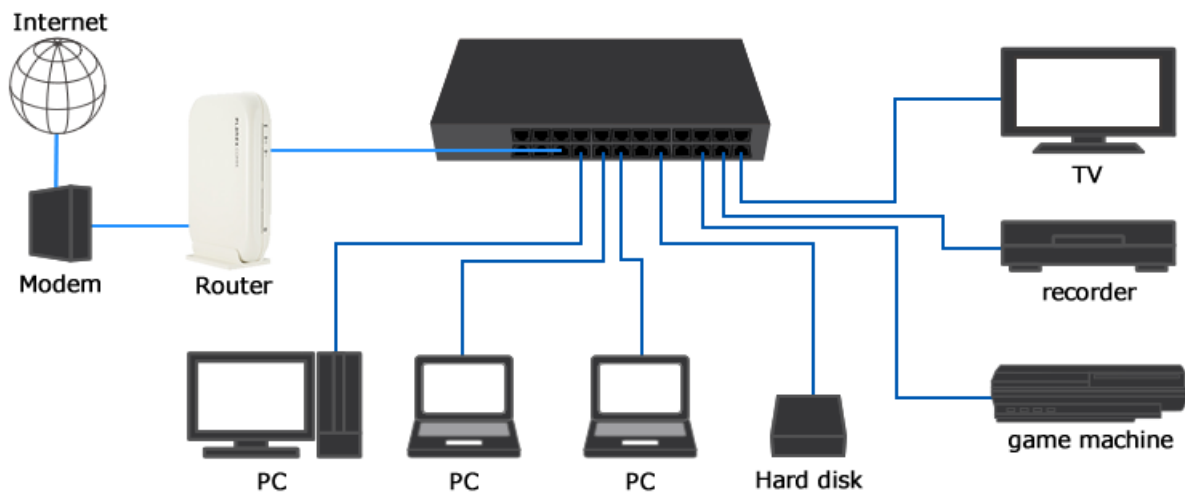


Figure: 3.1.12 Network switch Diagram

### 3.1.13 Local Area Network (LAN)

Associates of the LAN or Local Area Network arrange gadgets to allow PC and workstations to communicate data, devices and initiatives. A switch, or heap of switches, combines the collection of PCs and gadgets, using a personal tendency to conspire as defined by the TCP / IP convention. Private locations are novel in the neighborhood organize in connection with various PCs. Switches are located at a LAN's boundary, interfacing them with the larger WAN.

By definition, organizations must be quick and usually inexpensive devices (such as center points, connectors and Ethernet connections). LANs spread littler land area (size is restricted to a few kilometers) and are exclusive. It can be used for a company location, home, emergency clinic, colleges, etc.

LAN is anything but hard to structure and maintain. A LAN communication medium has wound pair connections and coaxial connections. It includes a brief separation, so there is restricted blunder and clamor. Flowing a Figure:

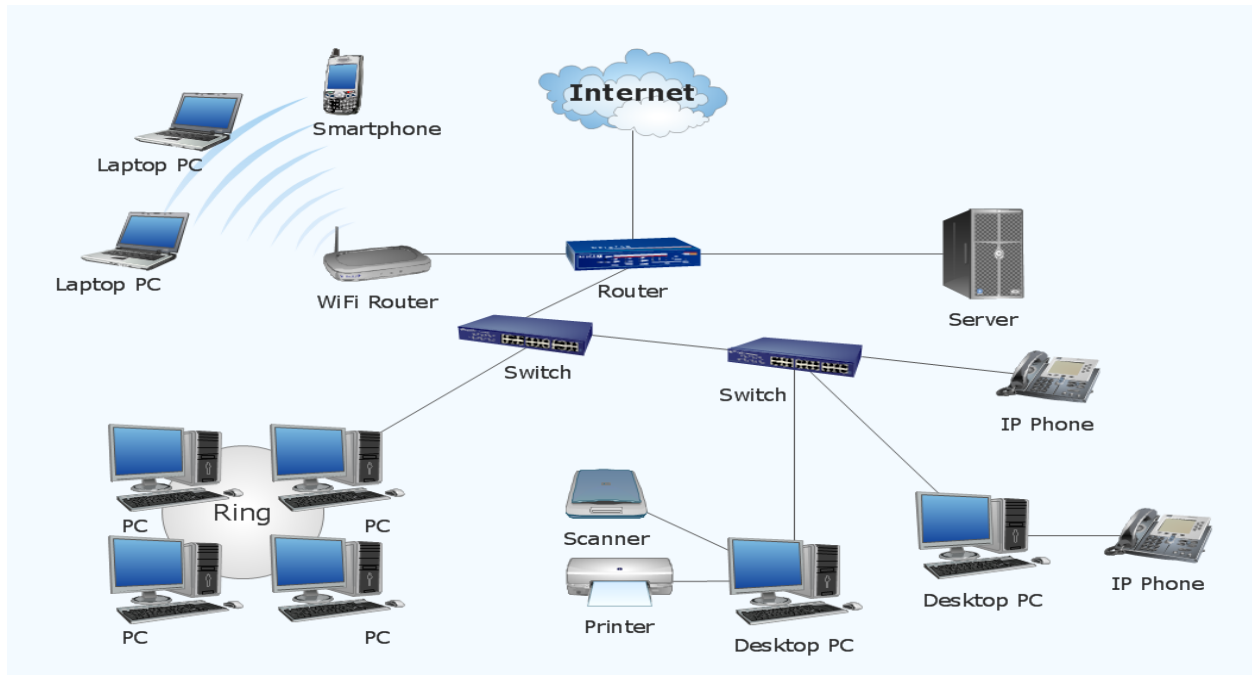


Figure: 3.1.13 Local Area Network Diagram

### 3.1.14 Metropolitan Area Network (MAN)

Organizing a metropolitan region (MAN) is an enormous PC arrangement that usually encompasses a town or huge grounds. A MAN is simplified for a larger land region than a LAN, going from a few squares of buildings to entire metropolitan regions.

When contrasted with WAN, MAN or Metropolitan Region Network includes a larger area than a LAN and littler area. It interfaces at least two PCs that live in the equivalent or different urban communities but are divided. It includes a vast area of territory and can fill up as an ISP (Internet Service Provider). MAN is designed for customers requiring a fast network.

It is exorbitant and could potentially be claimed by a lonely association. The pace of data movement and MAN's proliferation deferral is mild. Gadgets used to transmit data through MAN are: Modem and Wire / Cable. MAN instances are the part of the telephone organization arrangement that can offer the customer a quick DSL line or arrange digital TV in a town. Flowing a Figure:

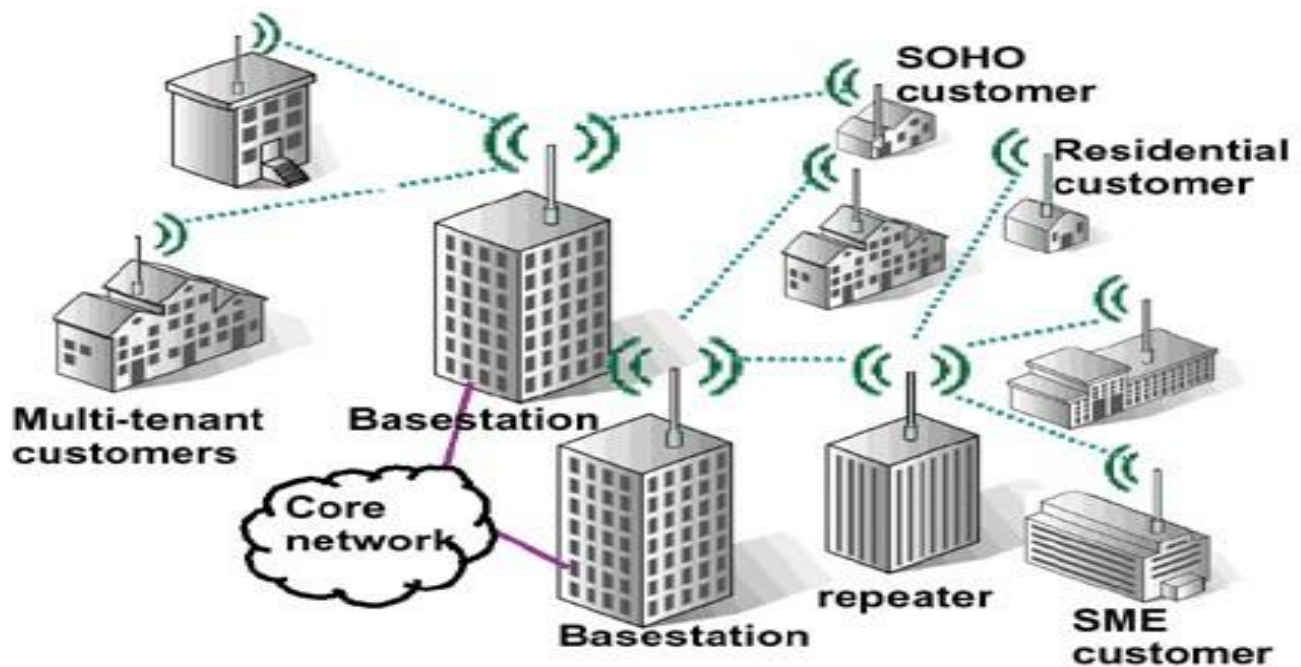


Figure: 3.1.14 Metropolitan Area Network Diagram

### 3.1.15 Wide Area Networking (WAN)

WAN or Wide Area Network is a PC arrangement that extends across a vast geological area, despite being limited to state or country boundaries. A WAN could be a LAN interfacing connection with other LANs through and could be limited to an effort (a partnership) The technology is quick and moderately expensive.

WAN is difficult to plan and maintain. Like a MAN, there is less adaptation to a WAN's non-critical failure and more blockage in the scheme. A contact medium used for WAN is either PSTN or Satellite Link. In particular, the commotion and blunder will be more in WAN due to the lengthy separation transmission.

The data rate of WAN is moderate about the velocity of a tenth LAN, as it involves extended separation and extended server and terminal number, and so on. WAN speeds range from a few kilobits per second (Kbps) to. Perhaps the most severe problem looked at here is the deferral of proliferation. Flowing a Figure:

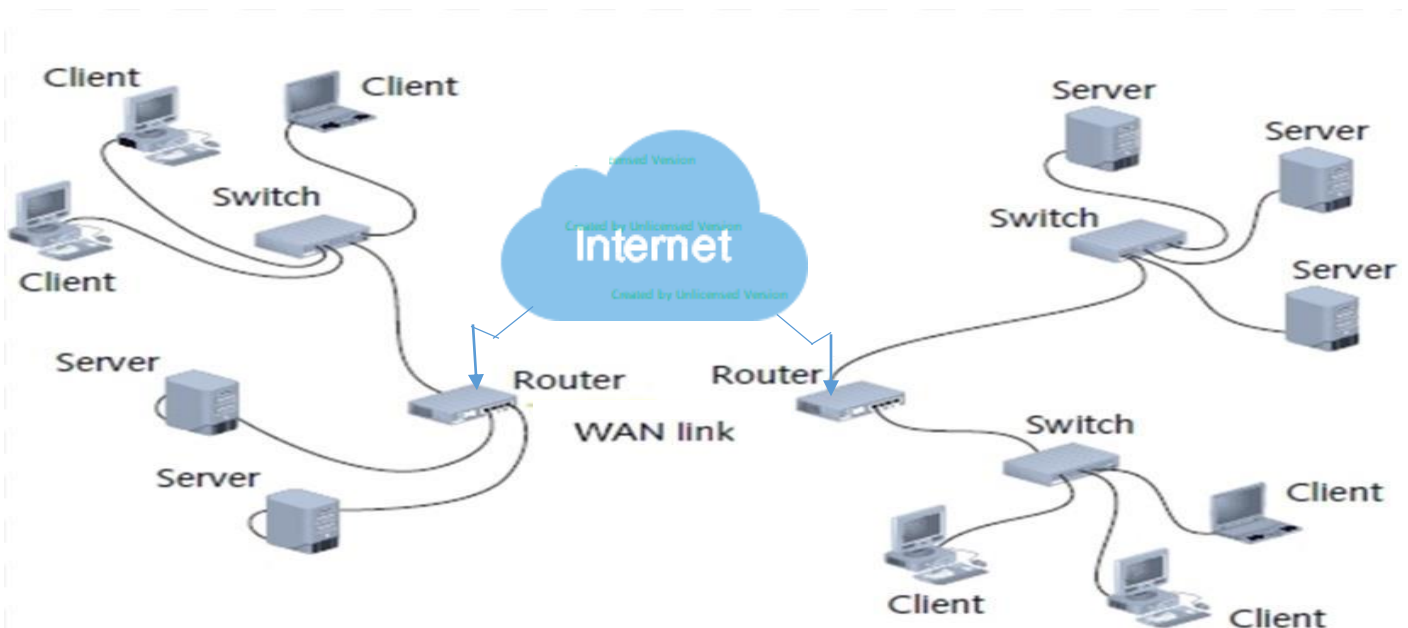


Figure: 3.1.15 Wide Area Networking Diagram

### 3.1.16 Network Access Control (NAC) / Policy Engine

Extraordinary Network Access Control (NAC) is a reply for wired and remote LAN and VPN customers based on completed principles, multi-market interoperable pre-associated and post-interface Network Access Control. Using Extreme Networks Identity and Access devices and additionally Identity and Access Virtual Appliance with Net Sight NAC managers designing detailing programming, IT supervisor can send a primary edge NAC reply to ensure just the right customer approach the information from the ideal place at the appropriate moment.

Outrageous Networks NAC is firmly integrated with Extreme Networks Intrusion Prevention System (IPS) and Extreme Networks Security Information and Event Manager (SIEM) and Extreme Networks Net Sight Automated Security Manager to provide top post-associate access control. Flowing a Figure:

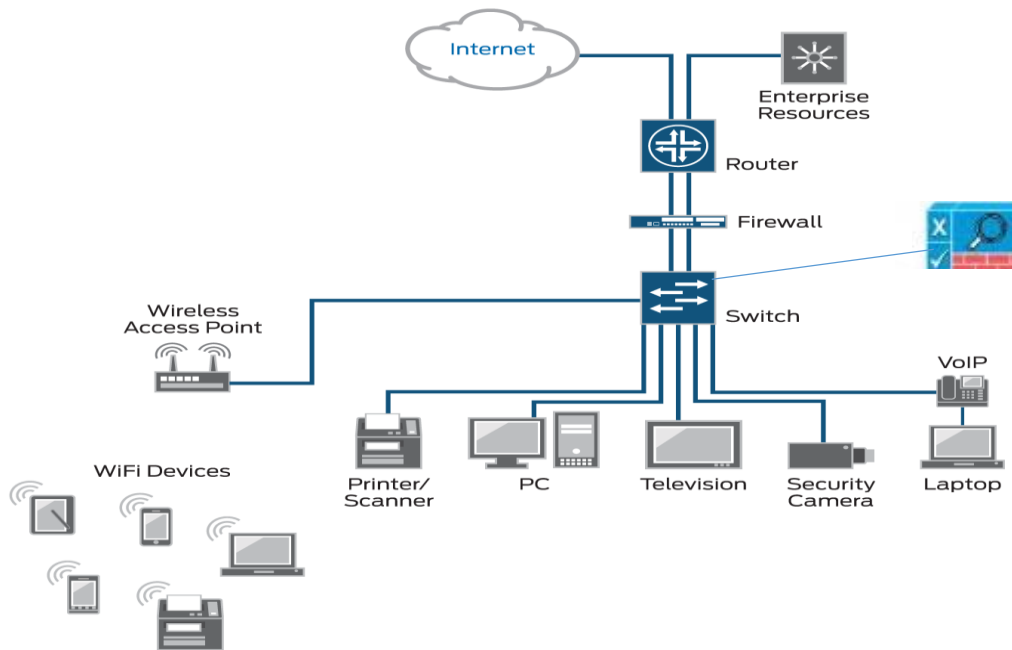


Figure: 3.1.16 Network Access Control Diagram



### 3.1.17 Virtual Private Network (VPN)

The term "private" is truly straightforward, and is complicatedly identified with the concept of "virtualization" to the extent that VPN's are concerned, as we're going to speak about in a minute. Within the least challenging definitions, "Private means that interchanges between (at least two) gadgets are mysterious in some design – that gadgets that are not interested in the "personal" concept of correspondence are not aware of the substance transmitted, And that they're completely uninformed about the personal partnership inside and outside.

Similarly, data protection and safety (data uprightness) are additionally important components of a VPN that need to mull over when considering a particular VPN execution. Another way to communicate this significance of private It's accessible through its antonym. An "open" office is one that is directly accessible and is supervised within. The personal asset is usually supervised by drugs that have selected access rights. Flowing a Figure:

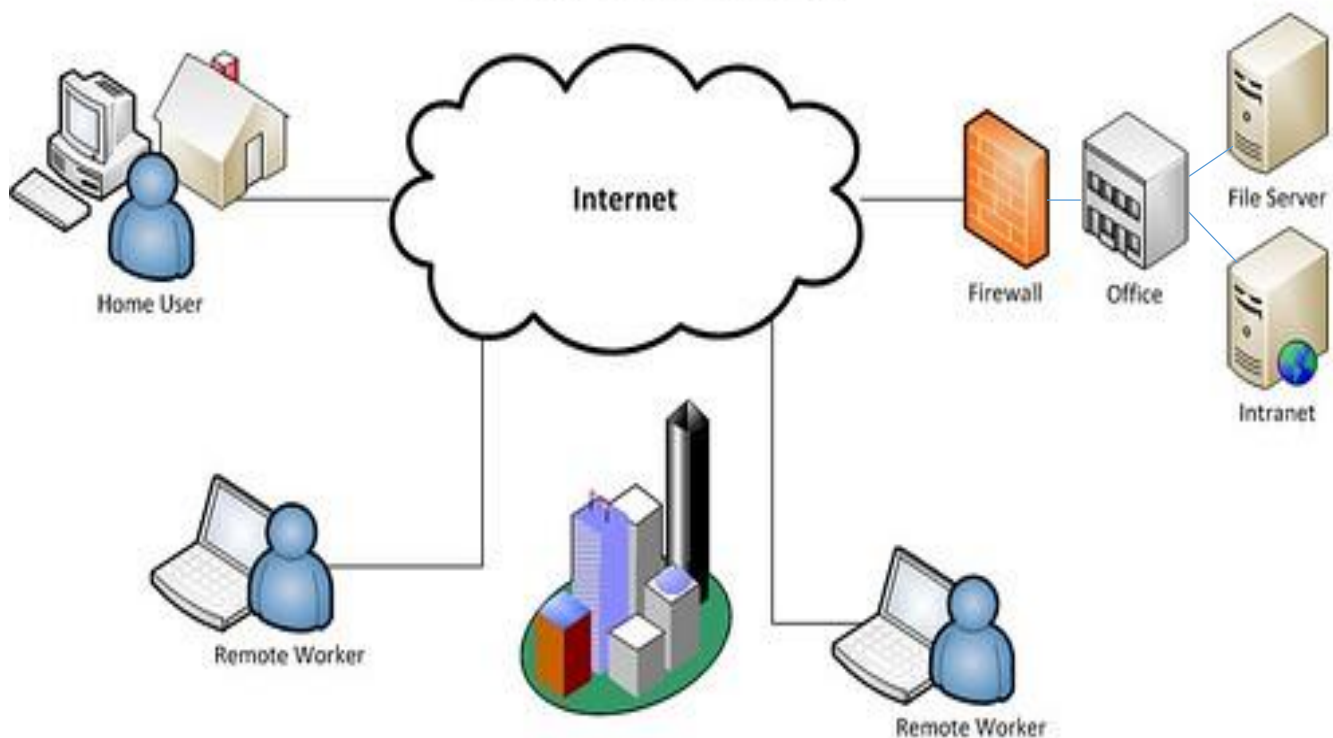


Figure: 3.1.17 Virtual Private Network Diagram

### 3.1.18 Variable length subnet mask (VLSM)

VLSM is a approach used by system heads to use their IP subnet(s) in a increasingly feasible manner. By using VLSM, a lengthy cover can be used on a scheme that has a few hosts and a brief net veil on subnets that have an enormous amount of hosts.

In any case, a steering convention must be used to support VLSM. Conventions, Cisco switches support the concept: Integrated IS-IS. VLSM also allows more than one subnet veil within a comparable system address space, which is also referred to as "sub netting a subnet."

VLSM allows devices to have a variety of subnet covers if the steering convention on the system on which it is used supports it. Additionally, VLSM breaks indicate that it uses the first and last subnets that were usually saved to mitigate the disarray created by a comparable place for the system and subnet. When this is achieved, VLSM underpins eight accessible subnets that can be supported by each 30. Flowing a Figure:

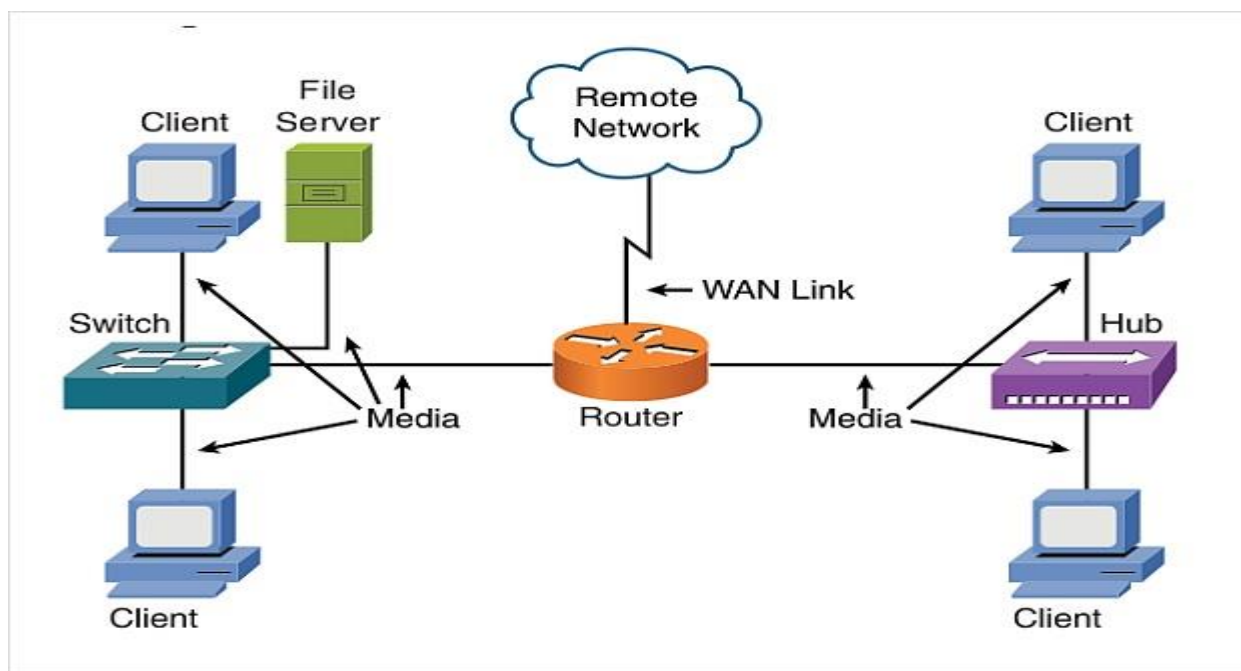


Figure: 3.1.18 Variable length subnet mask Diagram

## **3.2 Events and Activities**

Arranging is the vital phase for the transient situation, when an understudy encounters some problem in the middle of the section level situation, it is then necessary to give preparation. Issue has been acknowledged and can be arranged. Arranging can be described as aptitudes, contemplations, enhanced execution in a condition of nutshell situation.

## **3.3 Task and Activities**

The system scheme of Sonali Bank Limited using (OSPF) has been revealed. The previous system structure was scheduled using the Static and Routing Information Protocol (RIP) routing convention.

## **3.4 Challenges**

The exam discovered the best five domains presenting the IT master's most urgent challenges:

### **3.4.1 Improving and Securing Business Esteem**

Adjusting and joining IT opportunity organization and business intelligence capabilities with an progressively wide, comprehensive company scheme.

### **3.4.2 Cyber Security**

Currently, supervising and enhancing safety and insurance for the structure and information of the affiliation is the greatest need for all efforts.

### **3.4.3 Information Order**

Proper handling, supervision and verification of generating proportions of information within the affiliation.

### **3.4.4 Resource and Information Administration**

Improving data and information organization programs, driven by establishing mobile phone and application use and ongoing dissemination compromise into IT system and techniques.

### **3.4.5 Versatile Stages and Online Networking**

Consolidation of a safe, facilitated scheme for flexible company, devices and children on, and tendency of internet long-range casual communication assurances and strategy within the membership.

### **3.4.6 Explosion Of Flexible working**

This university was generally altered by distinct variables, most discernibly the rise of the homemaker and the annoyed in the velocity and constancy of monetarily open web affiliations. Late decades have seen a basic image of the movement in the manner I operate. With the prolonged unremitting quality and velocity of home frameworks, multiple affiliations have seen and sustainably stimulated an effect in versatile work Agents are marking trains and air terminals at home, in their neighborhood bistro, to a constantly growing degree.

## **Chapter 4**

### **Competencies and Future Plan**

#### **4.1 Competencies Earned**

My main goal of temporary position is to collect data and capacity on issues linked to equipment and system administration and to find the agreements. I polished and discovered out about works linked to both the machinery and the system.

#### **Problem 1: Connection Closed by Remote Host**

A client has established a connection with a distant host and the membership ends before the client logs out.

Use the ping charge to select if the host is running. While the distant host is around the host arrangement manager. If the host is not down, use telnet to restore the membership.

#### **Problem 2: Connection Time Out**

On the off alter my assessment that the distant host or structure is down, contact the host frame head and request the host status.

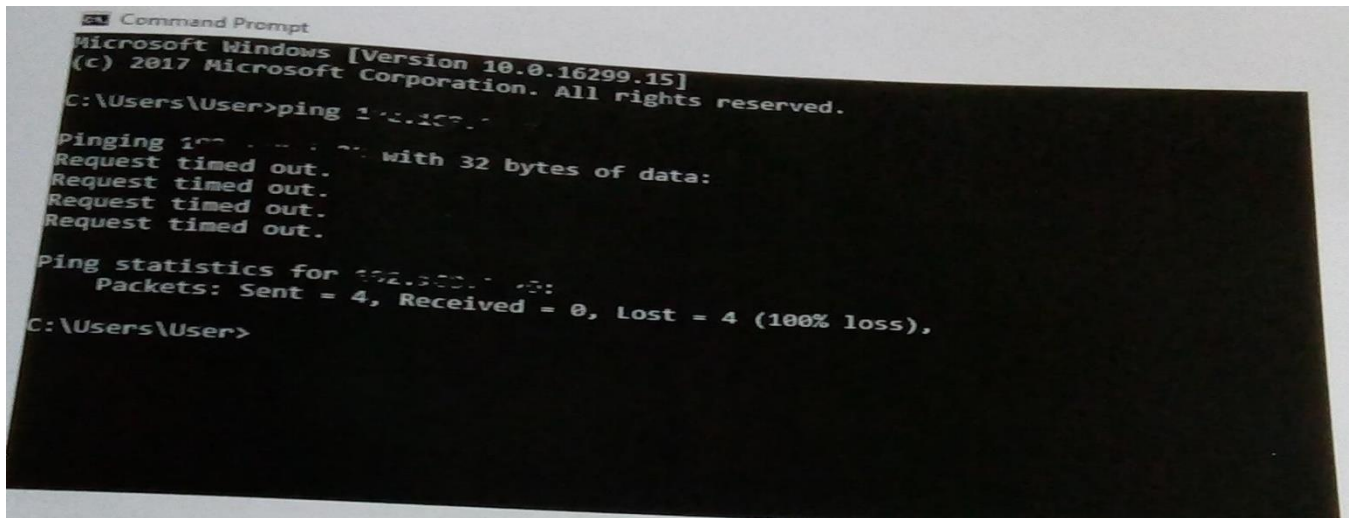


Figure: 4.1 Connection Time Out

### **Problem 3: Computer Screen is Sideways**

There may be some pivoting PC screens, so there are video cards that support that turn. Website design and professionals, for instance, use wide displays to gag long websites. My probably squeezed CTRL+ALT+LEFT Arrow to switch on this element. To kill the mood, mainly click CTRL+ALT+UP Arrow.

### **Problem 4: Login Incorrect Future Plan**

Clients on distant hosts need to appreciate their momentous documents and passwords.

## **4.2 Future Plan**

The type of task I was involved at Sonali bank limited, is usually done by a network administrator. In future I will try enrich my knowledge in network administration. I have plan to complete a course on CCNA or RHCHA and get certified. Beside CCNA I will keep learning about other popular networking equipment vendor such as juniper, Mikro Tik etc. In one sentence I will try to stablish myself as a professional network administrator.

## **4.3 Reflections**

I had speculative learning of frameworks organizing systems, multiple displays and equipment quite lately before my entrance level position. Regardless, in the middle of my short occupation. I learned and had a few hands on the routine with regard to PC equipment and frame devices. I can diagram a framework structure by and by without a lot of stretch and can also finish the whole framework. A midway through my transitory situation, I need to design a structure using Directing Show, the shortest way open. The entire framework was developed in static steering in advance.



## **Chapter 5**

### **Conclusion and Future Career**

#### **5.1 Discussion and Conclusion**

Temporary position has been generally an excellent field for me and the presentation site. It builds my ability, quality, capabilities, and performance. To me it was an incredible confrontation. In this temporary position, I had the option of learning and encountering many of the banking server's system management gears that bank uses to build their system and power.

Temporary position on the banking site is a huge field to collect data. I'm happy to have a opportunity. In this temporary situation, I also have participation not only in huge data. The position of the entry stage makes a person independent. Here they can inquire, update their hypothesis and useful data. It will encourage us in our future life.

#### **5.2 Scope for Further Career**

The most significant thing known as 'web' is the administration of PC systems. IT infrastructure and IT software are connected to the hip. Both are equally important to make my life easy. System administration is evergreen, it's just going to get bigger and increasingly unpredictable. Be that as it may, entering as a fresher is not extremely easy, but in case I need to study and exercise hands. Not at all like programming, where activity is increasingly limited to just coding this area requires hands-on or down to earth data on multiple system administration machinery, phases, arrange convention and all the more critically critical thinking capabilities

## Reference:

[1] Find out about Sonali Bank Ltd:

<https://www.sonalibank.com.bd/#> Accessed on: September, 2019 at 10:00 am.

[2] Market Situation in Sonali Bank Ltd:

<https://www.assignmentpoint.com/business/report-on--marketing-analysis-of-banks.html>

Accessed on: September, 2019 at 12:00pm.

[3] Target Group:

<https://www.assignmentpoint.com/business/banking/general-banking-activities-of-sonali-bank-limited.html> Accessed on: September, 2019 at 7:00pm.

[4] Learn about Ethernet cable, available at:

<https://www.lifewire.com/what-is-an-ethernet-cable-817548> Accessed on: September, 2019 at 9:00pm.

[5] Firewall:

[https://www.researchgate.net/publication/315614367Overview\\_of\\_Firewalls\\_Types\\_and\\_Policies\\_Managing\\_Windows\\_Embedded\\_Firewall\\_Programmatically](https://www.researchgate.net/publication/315614367Overview_of_Firewalls_Types_and_Policies_Managing_Windows_Embedded_Firewall_Programmatically) Accessed on: September, 2019 at 10:00am.