

# **An Internship Report on Network Configuration on Banking System of SIBL**

By

Abdulla-Al-Noman  
Id: 161-15-976

Department of Computer Science and Engineering  
Faculty of Engineering

This Report Presented in Partial fulfillment of the requirement for the  
Degree of Bachelor of Science in Computer science and Engineering

Supervised By

**Md. Reduanul Haque**  
Senior Lecturer  
Department of Computer Science and Engineering  
Faculty of Engineering



**Daffodil International University**  
**Dhaka Bangladesh**  
**10<sup>th</sup> December 2019**

## **APPROVAL**

This Internship title on “**Network Configuration on Banking System of SIBL**” submitted by Abdulla-Al-Noman ID: 161-15-976 to the Department of Computer Science and Engineering, Daffodil International University, has been accepted as satisfactory for the partial fulfillment of the requirements for the degree of B.Sc. in Computer Science and Engineering and approved as to its style and contents. The presentation has been held on 26-11-2019

## **BOARD OF EXAMINERS**

---

**Dr. Syed Akhter Hossain**  
**Professor and Head**

Department of Computer Science and Engineering  
Faculty of Science & Information Technology  
Daffodil International University

**Chairman**

---

**Dr. S M Aminul Haque**  
**Associate Professor**

Department of Computer Science and Engineering  
Faculty of Science & Information Technology  
Daffodil International University

**Internal Examiner**

---

**Saif Mahmud Parvez**  
**Lecturer**

Department of Computer Science and Engineering  
Faculty of Science & Information Technology  
Daffodil International University

**Internal Examiner**

---

**Dr. Mohammad Shorif Uddin**  
**Professor**

Department of Computer Science and Engineering  
Jahangirnagar University

**External Examiner**

## **DECLARATION**

We hereby declare that this Internship has been done by us under the supervision of **Md. Reduanul Haque, Senior Lecturer, Department of CSE** at Daffodil International University. I also declare that neither this Internship nor any part of this Internship has been submitted elsewhere for the award of any degree or diploma.

**Supervised by:**

---

**Md. Reduanul Haque**  
Senior Lecturer  
Department of CSE  
Daffodil International University

**Submitted by:**

---

**Abdulla-Al-Noman**  
ID: 161-15-976  
Department of CSE  
Daffodil International University

## ACKNOWLEDGEMENT

To Begin, I express my sincere thanks and gratitude to Almighty God for His divine blessing, enabling us to effectively finish our final year internship. I am genuinely grateful and wish our most profound gratitude to **Md. Reduanul Haque, Senior Lecturer** at CSE Department of Daffodil International University. His profound information on networking and our boss' interest in conducting this internship is his interminable patience, academic direction, consistent support, steady and lively supervision, useful criticism, significant exhortation, drafting of numerous inferior and revising stages all through this internship. Made conceivable

To finish my internship and his sincere help to other faculty members and Associate Professor in the CSE Department. **Syed Akhter Hossain Associate Professor and Head, Dr.S M Aminul Haque, Associate Professor**, Department of CSE, Daffodil International University might want to expand my sincere gratitude.

Finally, I should deferentially recognize the continued help and patience of our folks.

## **ABSTRACT**

This report portrays another and advancing innovation that can help the usefulness of existing devices or the improvement of new age apparatuses in SIBL I have effectively finished my internship as an individual from a "data innovation office". Along these lines, I have constantly attempted to help remote clients and nearby clients. In this work, I had the option to deal with organize availability, arrange design, and so on. I filled in as an innovation administrator with incredible bliss and certainty. During this time, I worked with arrange courses, dynamic host config conventions, standard access records, and so forth. I examined openings that innovations could utilize adequately. On the off chance that an innovation deliberately fits the organization's innovation and business targets, I have proposed approaches to incorporate and market it. The innovations I investigated were at various phases of improvement: some are accessible today yet others are one to two years from being industrially accessible. In this report, I have examined the system arrangement looked by Social Islami Bank Limited.

## Table of Contents

<b>APPROVAL .....</b>	<b>ii</b>
<b>DECLARATION.....</b>	<b>iii</b>
<b>ACKNOWLEDGEMENT.....</b>	<b>iv</b>
<b>ABSTRACT .....</b>	<b>v</b>
<b>Chapter 01: Introduction .....</b>	<b>1</b>
1.1 Introduction.....	1
1.2 Motivation .....	1
1.3 Objectives.....	1
1.4 About Company .....	2
1.5 Report Layout .....	2
<b>Chapter 02: Organization .....</b>	<b>3</b>
2.1 Introduction.....	3
2.2 Objectives .....	4
2.5 Organizational Structure.....	5
<b>Chapter 03: Tasks, Project and Activities .....</b>	<b>7</b>
3.1 Daily Task and Activities .....	7
3.2 Event and Actives .....	7
3.3 Project Task and Activities .....	7
3.3.1. Networking Base Connectivity .....	7
3.3.2 Existing Network Setup in SIBL .....	8
3.3.3 Network devices in IT division of SIBL.....	9
3.3.4 LAN Connection at SIBL IT Division .....	11
3.3.5 WAN Connection of SIBL.....	12
3.3.6 Network Route .....	12
3.3.9 Extended ACL.....	15
3.3.10 Virtual Area Network (VLAN) .....	15
3.3.12 Software Management of SIBL .....	17
3.4 Challenges: .....	20

<b>Chapter 04: Competencies and Smart plan.....</b>	<b>22</b>
4.1 Competencies Earned .....	22
4.2 My Smart Plan .....	22
 <b>Chapter 05: Conclusion and Future Scope.....</b>	 <b>23</b>
5.1 Conclusion .....	23
5.2 Scope for Future .....	23
 <b>References.....</b>	 <b>24</b>
 <b>Appendices.....</b>	 <b>25</b>
Appendix A: Internship Reflection .....	25
Appendix B: Company Detail .....	25

## LIST OF FIGURES

FIGURES	PAGE NO
Figure 1.1: Outline the project	2
Figure 2.1: SIBL Board of Director	6
Figure 2.2: SIBL Risk Management Functions	7
Figure 3.1: Existing Network Setup of SIBL	9
Figure 3.2: router 2911	10
Figure 3.3: Switch 2960	10
Figure 3.4: LAN Connection of SIBL	11
Figure 3.5: WAN Connection of SIBL	12
Figure 3.6: Static Routing	13
Figure 3.7: Ababil log in page	18
Figure 3.8: Ababil setup system	19
Figure 3.9: Ababil setup system	19
Figure 3.10: Password change screen	20
Figure 3.11: Force Unlock	20

## LIST OF TABLE

Table	Page No.
Table 3.1: project Task	8



## **Chapter 01: Introduction**

### **1.1 Introduction**

As an intern in the technology operations department of Social Islami Bank Limited on (5<sup>th</sup> November to 4<sup>th</sup> February). I was assigned with Hardware & Network. this wing also subdivided in to three more team. Such as, deployment team, maintenance team & support team. During Internship I learn about how to implement networking knowledge in real life. Here I trained to create Local area network. Help me to learn about network route and remote access.

In this report I describe about network configuration, which I have achieved through internship.

### **1.2 Motivation**

The fundamental focal point of the examination is "Data Technology arrangement of Social Islami Bank Limited. Be that as it may, the report has attempted to cover the outline of Social Islami Bank Limited IT division, capacities, the board, and other action. This report has likewise referenced the Network arrange of Social Islami Bank Limited's IT. The observational part incorporates just the distributed data and current acts of Social Islami Bank Limited. I have accumulated information about support and activity of various system availability, equipment ease of use, equipment investigating, the job of data innovation (IT), the portion of a system printer, Data recuperation, IP telephone configuration, antivirus establishment. I was readied this report after discourses with the pertinent IT official of Social Islami Bank Limited. Subsequent to hearing their important point of view, data and handy information I have finished my report.

### **1.3 Objectives**

- To know about the activity of information technology department of Social Islami Bank Limited.
- The major objective of the report is to fulfill the requirement of my internship and achieving academic and practical knowledge, how to network technology interact switch such a business field and to know the various technologies used in banking which I would apply in my future life .

- To find out some problems of information technology division of Social Islami Bank Limited& find solution of those problem.

#### 1.4 About Company

The Social Islami Bank Limited, a second-age bank, working since 22 November 1995 subject to Shariah Principles, has now 126 branches wherever all through the country with two helper associations - SIBL Securities Ltd. what's more, SIBL Investment Ltd. SIBL lays emphasis on work produced, condition considerate and green financial set up together speculation keeping an eye as for reasonable transport of benefits over the topographical area for manageable improvement of full-scale economy of the country.

#### 1.5 Report Layout

The picture says a ton regarding anything, so it is smarter to exhibit the entire venture in a basic manner with the assistance of a figure for a superior understanding of the task. The venture report comprises of Five (5) sections. Outline of this part with a concise synopsis is examined beneath through statistic representation:

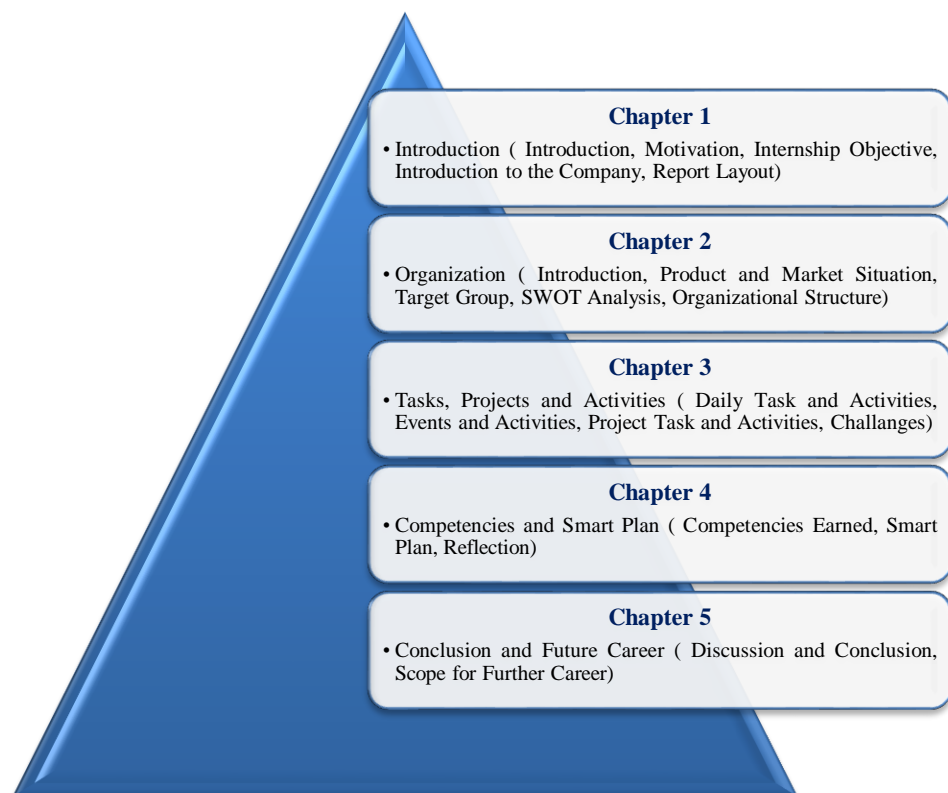


Figure 1.1: Outline the project

## **Chapter 02: Organization**

### **2.1 Introduction**

The financial framework at freedom included two branch workplaces of the past State Bank of Pakistan and seventeen colossal business banks, two of which were compelled by Bangladeshi premiums and three by untouchables other than West Pakistanis. There were fourteen littler business banks. Essentially all financial organizations were moved in urban spaces. The starting late autonomous government quickly assigned the Dhaka part of the State Bank of Pakistan as the national bank and renamed it the Bangladesh Bank. The bank was at risk for directing money, controlling credit and financial strategy, and managing trade control and the authority outside trade saves. The Bangladesh government at first nationalized the whole private financial framework and kept on updating and rename the different banks. Remote attested banks were allowed to keep working together in Bangladesh. The protection business was comparatively nationalized and changed into a wellspring of potential speculation spares. Agreeable credit structures and postal reserve funds workplaces took care of help of little individual and provincial records. The new financial structure winning concerning building up sensibly capable methodology for overseeing credit and outside trade. The central furthest reaches of the credit structure all through the 1970s was to back exchange and the open part, which together ate up 75 percent of all out advances. The organization's assistance during the late 1970s and mid-1980s of nation movement and private industry got changes in loaning methodologies. Overseen by the Bangladesh Krishi Bank, a particular natural financial foundation, loaning to ranchers and fishers significantly extended. The amount of country bank workplaces copied some spot in the extent of 1977 and 1985, to more than 3,330.

The SOCIAL ISLAMI BANK LTD (SIBL), a second-age business bank, working since 22nd November 1995 dependent on Shariah' Principles, has now 126 branches any place all through the country with two right hand associations - SIBL Securities Ltd. also, SIBL Investment Ltd. Focusing on poverty, SOCIAL ISLAMI BANK LTD is for sure an idea of 21st century participatory three domain banking model in one. In the most ideal piece, it fills in as an Islamic participatory business keep money with a human face way to deal with oversee credit and counts on benefit and fiasco sharing. It has a Non-formal financial segment too with casual fund and venture bunch that attracts and alters certified poor family and make near to salary openings and disheartens interior relocation. The bank has another division to modify the resolved part and the main collection of Waqf, Mosque properties and has presented the money Waqf framework extraordinary for the genuine scenery of banking. In the formal corporate piece, this Bank, among others, offers the most momentous financial organizations through opening of different sorts of store and venture accounts, financing exchange, giving letters of

assertion, opening letters of credit, game plan of bills, renting of mechanical assembly and buyers' outrageous, enroll buy and portion can hope for capital product, interest in ease lodging and the chairmen of veritable domains, participatory interest in different modern, plant, transport, instructive and prosperity experiences, etc.

## 2.2 Objectives

- ✚ Being a dynamic leader in the financial market by inventing new products as per the needs of the society.
- ✚ Earn a positive economic value (EVA) each year
- ✚ All commercial banks are at the top of the list in terms of cost-efficiency.
- ✚ To become one of the best financial institutions in the economy of Bangladesh by participating in significant portions of the business market we serve.

## 2.4 SIBL SWOT Analysis:

### 2.4.1 Strength

Strength is a positive internal factor that a company can use to accomplish its goals, goals, and objectives. They may include:

- ✚ Customer satisfaction
- ✚ Service quality
- ✚ Pricing effectiveness
- ✚ Special skill & knowledge
- ✚ Positive public image.

### 2.4.2 Weakness

Weakness implies negative internal variables that hinder or confine the accomplishment of the stated objectives and objectives of the organization. They may include:

- ✚ Market share
- ✚ Shortage of skill work force.
- ✚ SIBL has lack of ATM booth.

### 2.4.3 Opportunity

Opportunities are the outer alternative that a firm can endeavor to achieve its crucial. They may include:

- ✚ Sales force effectiveness
- ✚ Customer retention

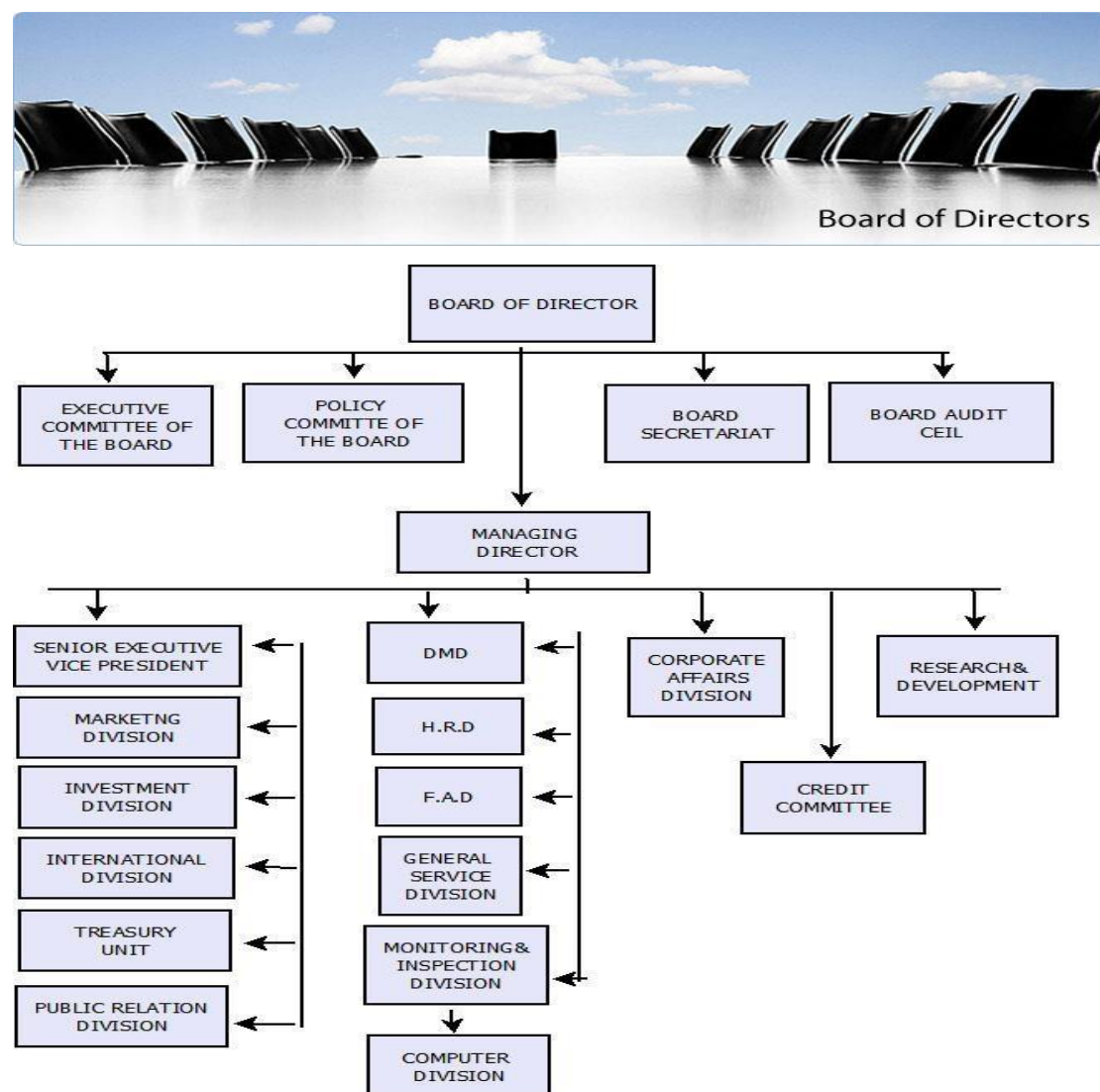
✚ Innovation effectiveness

#### 2.4.4 Threat:

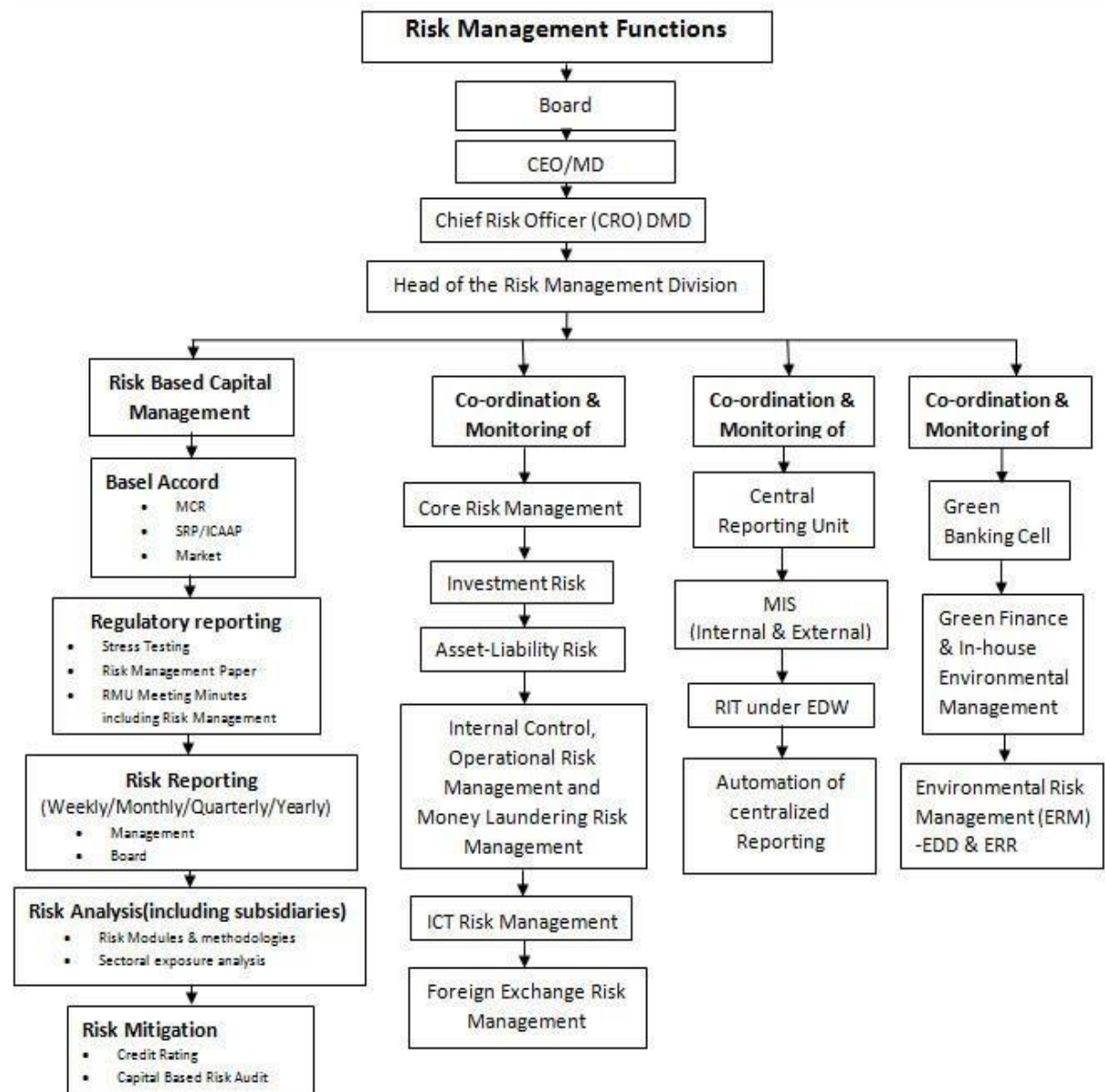
Threats are negative outer powers that limit an organization's capacity to accomplish its crucial, and goals. Threat to the business can take an assortment kind of structures, for example,

- ✚ Promotion effectiveness
- ✚ Competitors entering the market.
- ✚ Economic recession
- ✚ Technological advantages

## 2.5 Organizational Structure



**Figure 2.1: SIBL Board of Director**



**Figure 2.2: SIBL Risk Management Functions**

## Chapter 03: Tasks, Project and Activities

### 3.1 Daily Task and Activities

Amid my 3(three) months internship at Social Islami Bank Ltd., I have dealt with various assignments, ventures and exercises. I learn distinctive sort of dialects and last 1(one) month prepared for make a Report basis of Network configuration. Here, I incorporates my day by day assignments and exercises by Table 3.1 which I take in my first 3(three) months temporary job.

WEEK	TASKS LIST
1 <sup>st</sup>	Network Basic, Device Details
2 <sup>nd</sup>	Cable configuration Domain, Arp protocol
3 <sup>rd</sup>	Ip Address, Sub netting.
4 <sup>th</sup>	VLSM Class Document, Router Basic Configuration
5 <sup>th</sup>	Password Configuration, Password Break, Network Route
6 <sup>th</sup>	Static & Default Routing
7 <sup>th</sup>	Telnet & SSH Configuration
8 <sup>th</sup>	DHCP Configuration
9 <sup>th</sup>	RIP Configuration
10 <sup>th</sup>	EIGRP Configuration
11 <sup>th</sup>	Standard & Extended ACL
12 <sup>th</sup>	VLAN & VPN Configuration

Table 3.1: project Task

### 3.2 Event and Actives

Consistently I take a shot at my theme. Consistently I update my configuration with my trainer and attempt to get criticism from him. All things considered, I've had the option to arrange networking with everybody's assistance.

### 3.3 Project Task and Activities

#### 3.3.1. Networking Base Connectivity

In order to operate the PCs of Social Islami Bank Ltd. in a real time environment and maintain a communication simultaneously throughout the bank, it is needed to build a sustainable network, consisting these entire PCs. Once the piece of hardware is loaded with the necessary software. It is important to establish the kind of network connectivity we want to give it. All the PCs in the network under the same domain sibl-bd.com.

Every building has a LAN (Local area network) within itself and each of the branches and offices within the city will have its own LAN. LANs under the same domain can be interconnected together to maintain equal use of the domain facilities and accessibility of centrally controlled applications like finale from the server room of the IT department. But LANs spread within a city or a small geographical area. Then how are the office spread across the country connected to the servers, another form of network model called the WAN (Wide area network) is employed to do so. WANs can cover multiple cities, states and even countries. Employing the LAN and WAN models, Social Islami Bank has built its network infrastructure to effectively control its daily work from the head office itself. Setting a PC or a system printer inside a space is acknowledged once an IP address (Internet Protocol Address) of the gadget is built up by the system group. The IP address is given to us and afterward we place the location in the system controller of the PC and afterward additionally add to t the area name by which the entire system is distinguished. Once completed, the computer immediately gets accessibility rights of the network.

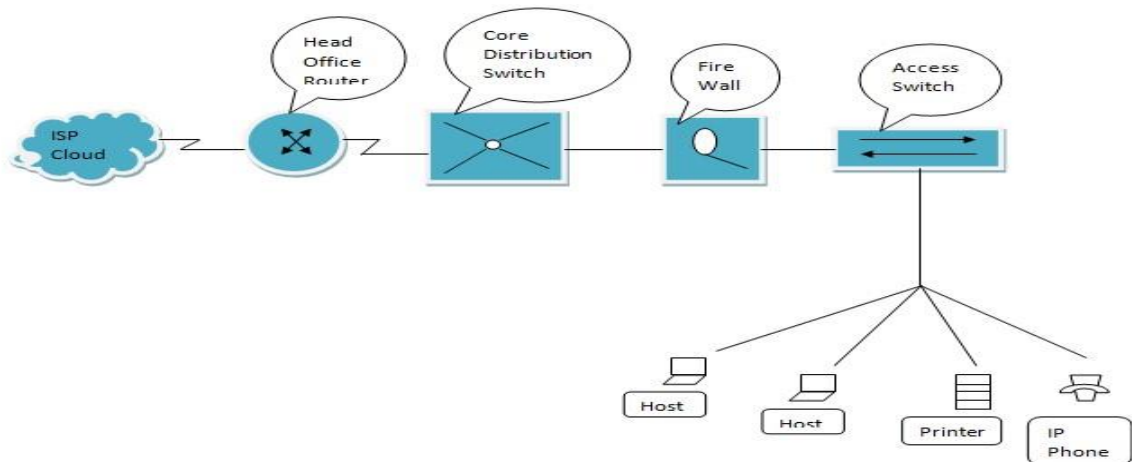
### **3.3.2 Existing Network Setup in SIBL**

Almost every bank has their own internal internet setup, database and online application so that the employees and listed user can access their own network categorized by the different network. Without networking system computer can't be able to access their own application. Social Islami Bank Ltd. Information Technology Division has fulfilled with networking setup of LAN and WAN. IT Division, Data Center, Network Operation Center (NOC), Head office and branches are in well-constructed in cabling. There is also switch, router, ware manager, communication rack, network rack which is adorned with modular.

WAN connection of SIBL is encrypted by IP sec VPN from branch router to ITD router. Social Islami Bank Ltd. Information Technology Division has data center where communication rack installed, Network Operation Center (NOC) which is fulfilled by dynamic and reflexive devices. The central office and all branches of SIBL are connected with LAN. IT department has launched a branch- wide to complete planned networking. Head office and 125 branches are connected to the Data Center through fiber and VSAT connectivity. All branches are secured in LAN networking.



## Head Office Network



## Branch Network

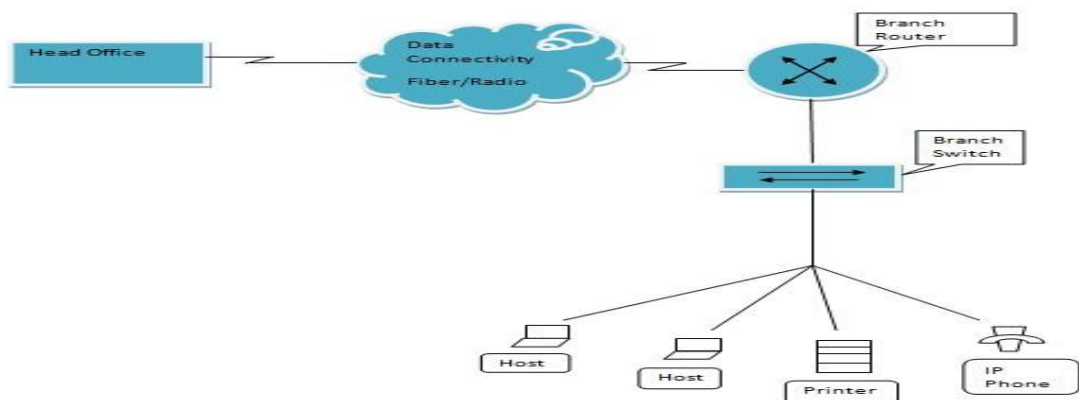


Figure 3.1: Existing network setup of SIBL

### 3.3.3 Network devices in IT division of SIBL

#### Router

A router is a gear device and has the limit of directing bundles between frameworks. A router works at layer 3 of the OSI-model the framework layer. This is the layer that the IP convention works all things considered routers today are IP routers that inspect the source and goal IP locations of each package, investigate the goal of the group in the routers IP directing table and course that pack on its way. On the off chance that the goal isn't recorded in the steering table, the router will either send the pack to a default router if it has one or drops the bundle. The router is commonly used to area colossal neighborhood to a wide – zone organize (a LAN to a WAN) yet can in like manner be used to section immense neighborhood (LANs). Social Islami Bank Ltd. IT division utilizes Cisco 2911 course of action focus router. The Cisco 2911 incorporated organization router is a bit of the Cisco 2900 coordinated Services Router Series which supplements the Integrated Services Router Portfolio



Figure 3.2: Router 2911

### Switch

A switch is an equipment gadget that works at layer 2 of the OSI model – data link. The data link layer is the place the Ethernet convention working. A switch is a fast multiport connect; this is the reason connect are never again required or made. Switches do what scaffold did quicker and less expensive. Most routers can likewise work as scaffolds. Cisco 2960 is utilized for floor LAN association and it is confined with 24 numbers Gbs speed. Switches are associated with the communication rack. It is intended for simplifying the operation, they additionally give adaptable, secure and vitality proficient banking application operation with intelligent administrations.



Figure 3.3: Switch 2960

### Media Converter

A fiber media converter is a straightforward networking gadget that make it conceivable to associate two unique media types, for example, bent pair with fiber optic cabling. Social Islami Bank Ltd. Information Technology division is utilized the 10/100 quick Ethernet Media Converter arrangement. These are intended to quick copper base by means of a fiber optic link and created to fill the embrace demand of system

arrangement and expand in a situation to a most extreme separation of up the 120 km .10/100 quick Ethernet media converter arrangement are completely passive by the 10/100 Base –

### Firewall

A firewall is used to shield an undeniably secure framework from a less secure framework. Generally, firewalls are used to shield your interior/private LAN from the Internet. A firewall all around works at Layer 3 and 4 of the OSI Model. Layer 3 is the Network layer where IP works and layer 4 is the Transport Layer, where TCP and UDP work. Various firewalls today have advanced up the OSI layer and can even comprehend Layer 7-the Application Layer

### 3.3.4 LAN Connection at SIBL IT Division

Social Islami Bank IT division is built with two floors and connected more than 300 nodes which are connected with the cabling of Panduit cat6 cable. All cables are connected with channel cable tray and using of ladders, pipes, insulation and sound protection. Industry has made path code which are used everywhere. Switches, wire manager and all patch panels are decorated in a network rack for different floor and Network Operation Center (NOC). All communication fiber cables are resolved and media converter converts and install in managed way in the network rack. The next frame is used for wiring in the data center connect.

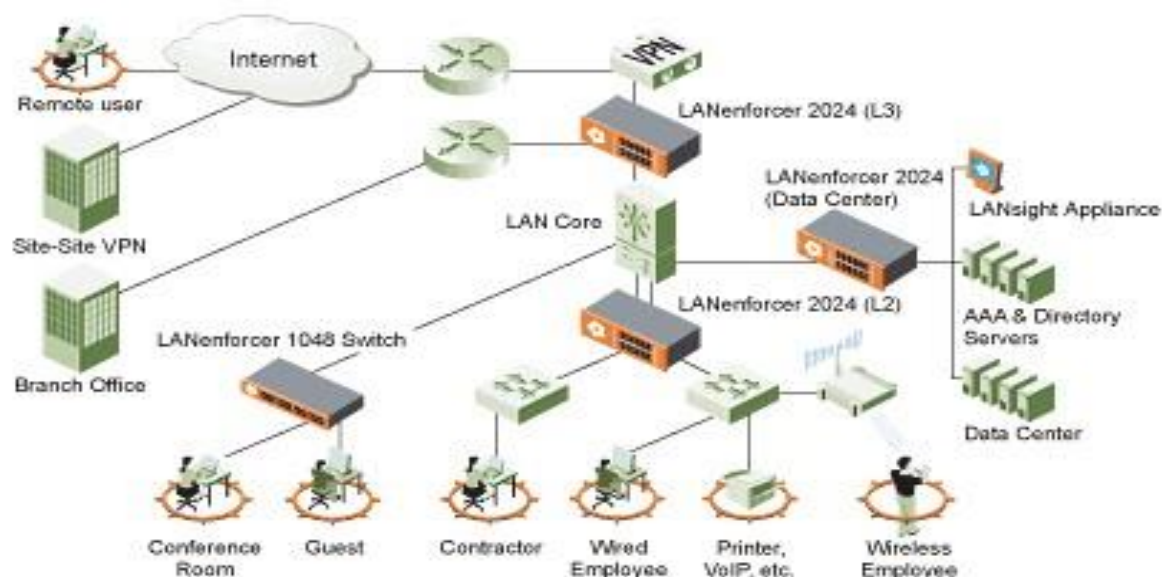


Figure: 3.4: LAN Connection of SIBL.

### 3.3.5 WAN Connection of SIBL

A wide framework (WAN) is a framework that covers a wide district (telecommunication mastermind that links across over metropolitan, provincial or international points of confinement) using leased telecommunication lines. Business and government components utilize WAN to hand-off data among representatives, clients, buyers, and suppliers from various geological locations. Fundamentally, this strategy for telecommunication empowers a business to suitably finish its step by step work paying little regard to location. The internet can be seen as a WAN likewise and is used by business, governments, organization, and individuals for all intents and purposes any explanation imaginable.

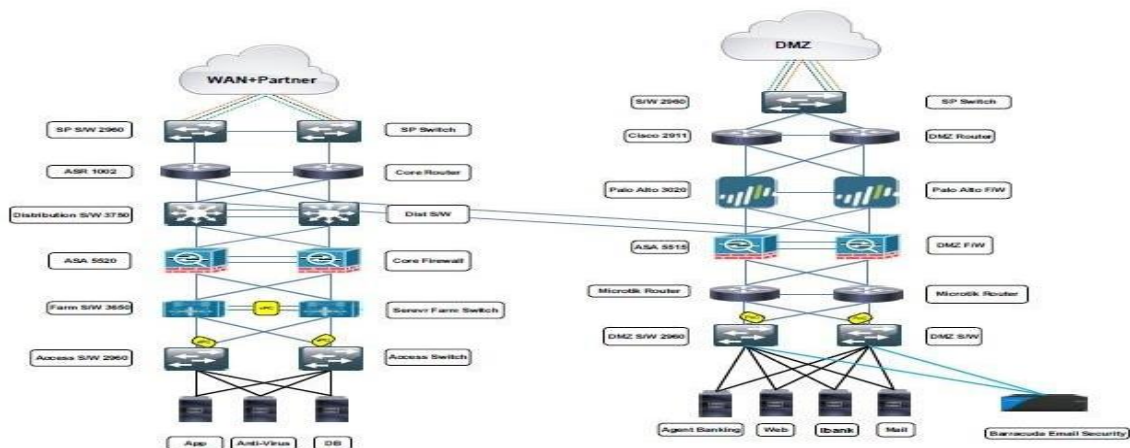


Figure: 3.5: WAN Connection of SIBL

### 3.3.6 Network Route

When data send one network to another network then we need to route the network.

For send the data we use Static & Default routing.

#### Static Routing

For Static routing, all kind of information of Destination network that means ip of destination network, subnet mask of destination network and network path need to inform routing table manually. Here I transfer data one network to another network.

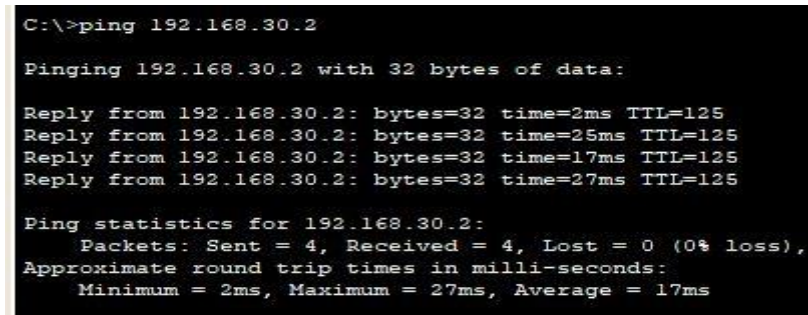
Configuration Router:

```
Router>enable
Router# configure terminal
Router (config)#hostname R1
R1(config)#interface serial 0/0/0
R1(config-if)#ip address 172.150.1.1 255.255.255.252
R1(config-if)#clock rate 64000
R1(config-if)#no shutdown
R1(config-if)#exit
```

```

R1(config)#interface fastEthernet 0/0
R1(config-if)#ip address 192.168.10.1 255.255.255.0
R1(config-if)#no shutdown
R1(config)#ip route 172.150.1.4 255.255.255.252 serial 0/0/0
R1(config)#ip route 192.168.20.0 255.255.255.0 serial 0/0/0
R1(config)#ip route 192.168.30.0 255.255.255.0 serial 0/0/0
R1(config)#exit

```



```

C:\>ping 192.168.30.2

Pinging 192.168.30.2 with 32 bytes of data:

Reply from 192.168.30.2: bytes=32 time=2ms TTL=125
Reply from 192.168.30.2: bytes=32 time=25ms TTL=125
Reply from 192.168.30.2: bytes=32 time=17ms TTL=125
Reply from 192.168.30.2: bytes=32 time=27ms TTL=125

Ping statistics for 192.168.30.2:
    Packets: Sent = 4, Received = 4, Lost = 0 (0% loss),
    Approximate round trip times in milli-seconds:
        Minimum = 2ms, Maximum = 27ms, Average = 17ms

```

Figure 3.6: Static Routing

### Advantage of Static routing

- Static routing causes very little load on the CPU of the router, and produces no traffic to other routers.
- Static routing leaves the network administrator with full control over the routing behavior of the network.
- Static Routing is very easy to configure on small networks.

### Default Routing

In PC networking, the default course is a setting on a PC that defines the parcel forwarding rule to utilize when no particular course can be determined for a given Internet Protocol destination address. All bundles for destinations not set up in the routing table are sent by means of the default course.

The default course typically points to another router, which carries on in a similar path as the bundle. In the event that a course matches, the bundle is sent accordingly, Otherwise the parcel is sent to that routers default course. The following bounce organize gateway is the longest subnet covered system that matches the destination IP address.

Configuration Router:

```
Router>enable
Router#configure terminal
Router(config)#hostname R1
R1(config)#interface serial 0/0/0
R1(config-if)#ip address 172.150.1.1 255.255.255.252
R1(config-if)#clock rate 64000
R1(config-if)#no shutdown
R1(config-if)#exit
R1(config)#interface fastEthernet 0/0
R1(config-if)#ip address 192.168.10.1 255.255.255.0
R1(config-if)#no shutdown
R1(config)#ip route 0.0.0.0 0.0.0.0 serial
```

### 3.3.7 Dynamic Host Configuration Protocol

Dynamic host configuration convention is a convention that permitted IP delivers to a contraption on a framework. With dynamic tending to, a contraption has a different IP address each time it interfaces with the framework. On specific systems, the IP address of the contraption. Dynamic tending to improves organize organization in light of the fact that the software screens IP addresses as opposed to requiring an overseer to manage the endeavor. This implies another PC can be added to a framework without the issue of physically relegating it a striking IP address. Various ISP uses dynamic IP tending to for Internet supporters

DHCP configuration:

```
R1(config)# ip dhcp pool ADMIN
R1(dhcp-config)# network 192.168.10.0 255.255.255.0
R1(dhcp-config)# default-router 192.168.10.1
R1(dhcp-config)# dns-server 8.8.8.8
R1(config)# ip dhcp excluded-address 192.168.10.2 192.168.10.20
R1(config)# ip dhcp excluded-address 192.168.10.23
R1(config)# ip dhcp pool USERS
R1(dhcp-config)# network 192.168.20.0 255.255.255.0
R1(dhcp-config)# default-router 192.168.20.1
R1(dhcp-config)# dns-server 8.8.4.4
R1(config)# ip dhcp excluded-address 192.168.20.4 192.168.20.16
R1(config)# ip dhcp excluded-address 192.168.10.18
```

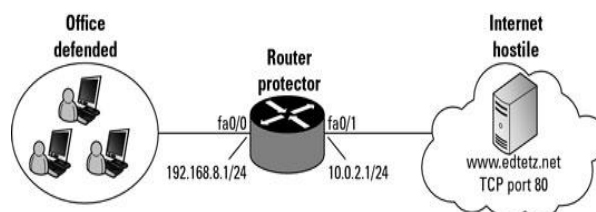
### 3.3.8 Standard ACL

Access-list (ACL) is a lot of rules defined for controlling the system traffic and reducing system attacks. ACLs are utilized to channel traffic dependent on the arrangement of rules defined for the incoming or outgoing of the system. Standard Access-list – These are the Access-list which are made using the source IP address as it were.

Access-list is utilized for authorization and denied. The client doesn't access the web, the FTP server its occurred for standard access-list.

### 3.3.9 Extended ACL

Expanded Access Control Lists (ACLs) empower you to permit or deny traffic from express IP addresses to a specific destination IP address and port. It similarly empowers you to determine different kinds of traffic, for instance, ICMP, TCP, UDP, and so forward. Clearly, it is granular and empowers you to be undeniable. In case you intend to create a pack filtering firewall to guarantee your framework, it is an Extended ACL that you ought to create. The model that will be used includes a router that is associated with the 192.168.8.0/24 part on an internal interface (Fast Ethernet 0/0) using address 192.168.8.1/24, and to the 10.0.2.0/24 segment on an outside interface (Fast Ethernet 0/1) using address 10.0.2.1/24. For this situation, you would manage the 192.168.8.0/24 framework and some dark and untrusted bundle manages the remainder of the framework, as showed up. On this framework, you have to empower customers to access simply web servers outside the framework. In solicitation to support this, you need to create two ACLs, 101 and 102.



### 3.3.10 Virtual Area Network (VLAN)

VLAN is a legitimate gathering of workstation, servers and network gadgets that gives off an impression of being on a similar LAN in spite of their geological conveyance. The virtual LAN controller can change workstations and oversee load balancing and bandwidth appropriation all the more effectively. VLAN can be thought of as intelligent communicate domains. Datacenter and IT Division of SIBL is utilized VLAN to lessen

the trafficking of the network, secure the network and shield network from spam and spy. It eliminates inactivity in the network, which secures network properties and increase network proficiency.

VLAN can degree in various switches and it can likewise edge within the switch network. In the exchanged network on the off chance that the gadgets are using interconnection switches, then VLAN are not confined to any substantial limitation. It is like IP subnet. VLAN is utilized TO SEGMENT a single communicate domain to different domains in layer - 2 exchanged network.

### **Advanced of VLAN**

VLAN accommodates location independence. This adaptability makes promotions, changed and moves of networking gadget a straightforward procedure. It additionally enables you to assemble individuals, which likewise makes implementing your security approaches. IP conventions bolster 500 gadgets for every VLAN.

- ✓ VLAN diminishes the prerequisite for having introduced the framework switches contain impart traffic.
- ✓ The subjugation of a telecom space reduces arrange traffic. If a switch isn't related to the VLAN, the end – station of a VLAN can't talk with the end station of the other VLAN.
- ✓ Impart is required for the run of the mill limit of a framework. Various shows and applications depend after conveying correspondence to work fittingly. A layer 2 traded frameworks are
- ✓ in alone impart space and they convey can land at a comparable telecom zone.

### **VLAN Configuration:**

```
Switch(config)# vlan 20
Switch(config-vlan)# name ACCOUNTS
Switch(config)# interface range fastEthernet 0/4-5
Switch(config)# interface fastEthernet 0/6
Switch(config-if-range)# switchport mode access
Switch(config-if-range)# switchport access vlan 20
Switch(config)# interface fastEthernet 0/7
Switch(config-if)# switchport mode trunk
```



### 3.3.11 Virtual Private Network

A Virtual Private Network (VPN) is a network that is commonly used to connect remote users or regional offices to a company's private, internal network using public cable.

A VPN protects the private network using encryption and other security measures to ensure that no unauthorized users can access the network and prevent data from being interrupted. This type of network is designed to provide secure, encrypted tunnels so that data can be transmitted between remote users and company networks

Configuration VPN:

```
Router1 (config) # interface tunnel 1
Router1 (config-if) # ip address 10.10.10.1 255.255.255.252
Router1 (config-if) # tunnel source serial 0/0/0
Router1 (config-if) # tunnel destination 200.10.30.2
Router1 (config-if) # tunnel mode gre ip
Router1(config)# ip route 192.168.20.0 255.255.255.0 10.10.10.2
Router2 (config) # interface tunnel 2
Router2 (config-if) # ip address 10.10.10.2 255.255.255.252
Router2 (config-if) # tunnel source serial 0/0/0
Router2 (config-if) # tunnel destination 200.10.20.2
Router2 (config-if) # tunnel mode gre ip
Router2(config)# ip route 192.168.10.0 255.255.255.0 10.10.10.1
```

### 3.3.12 Software Management of SIBL

Software implies PC directions or information. Anything that can be taken care of electronically is software, instead of limit devices and show contraptions which are called gear. The board software is a general articulation used to delineate a class of program expected to help streamline the multifaceted idea of tremendous endeavors and tasks similarly as encourage bunch joint effort and dare to report Management software is a sweeping term that can in like manner apply to budgetary organization software, arrange the board software, customer relationship the board software, asset the official's software or stock the administrators' software. Social Islami Bank Ltd. For the most part use ABABIL software where all specialists of SIBL partner this software and all organizations giving by this software.

## ABABIL

Trade Finance has been reviewing the global trade market since 1983 trade There are various definitions of trade finance and the use of the terms used is interesting. It has been described both as a 'science' and 'a nonsense term covering various activities'. The nature of these things, for example, are both correct. Nevertheless, this science has a wide range of tools for settling financiers, all of which determine how cash, credit, investment, and other resources can be used for business. Abel Trade Finance is responsible for providing Shariah-based trade finance to business sector entities while maintaining the rules and regulations of Islamic financing.

Browser will open ABABIL log in screen to enter the application. User has to input user name and corresponding password. After user authentication checking, application will accept the user to enter into ABABIL. Otherwise there will be an error message to notify user about invalid user name or password.

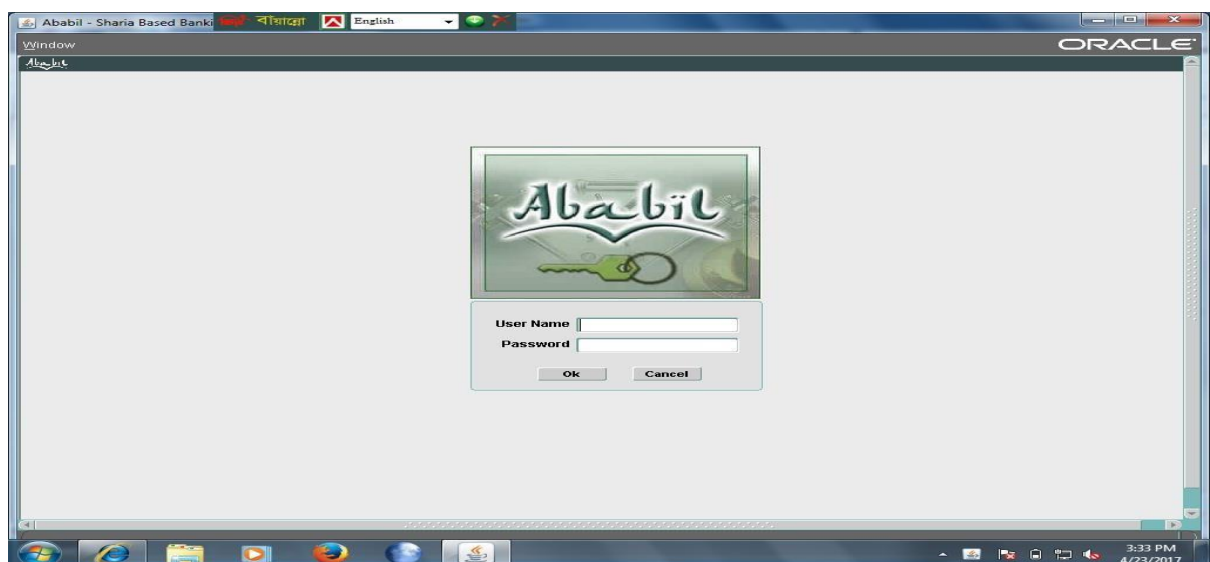


Figure 3.7: Ababil Log in Page

## Setup

This is the top most important menu for Trade Finance Module of ABABIL. All the core information setup is performed from here which will be used for different purpose of trade finance related operations. This is one-time setup or can be treating as general setup and the saved information will get in LOV or Drop-down list during the relevant operation performing.

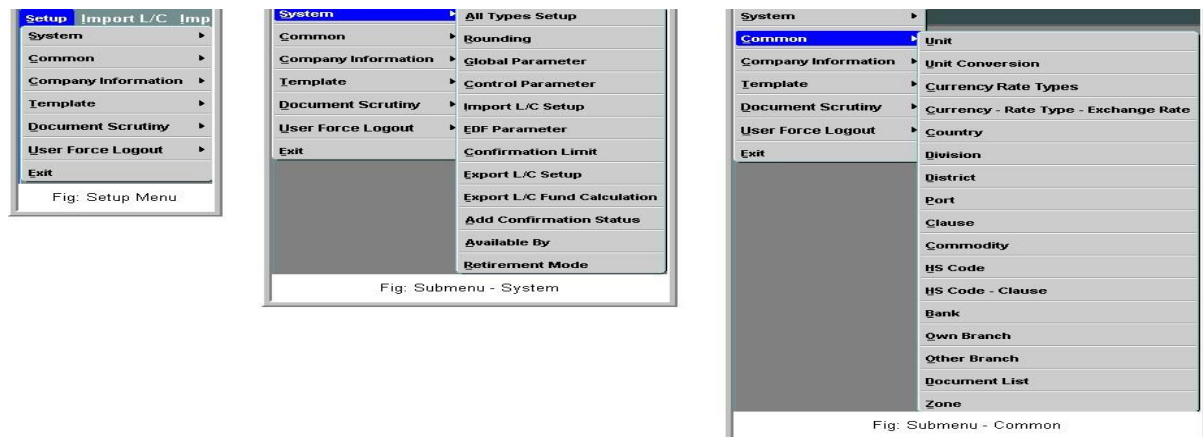


Figure 3.8: Ababil setup system

For an example, once we setup a country with necessary information then will get the country name on LOV or drop-down listed on relevant screen. No need to manual entry again and again. 10 We can perform different setups which are classified by different sub-menus. Here are some snap-shot for different setups

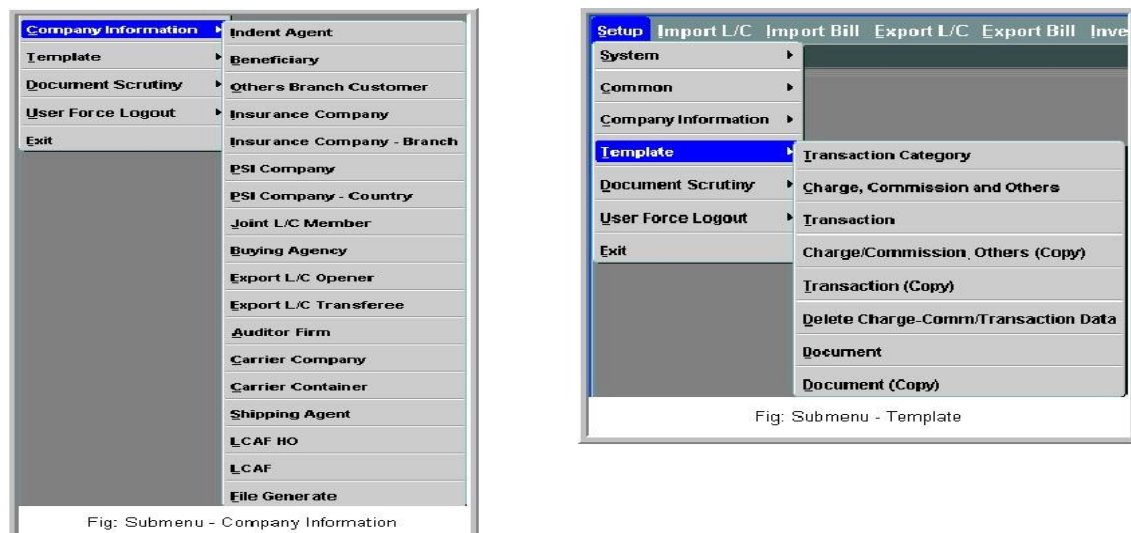


Figure 3.9: Ababil Setup System

### Password Change

Password is a very important issue for security purpose. Due to some unusual issue it's needed to change password. We can perform this operation under this submenu.

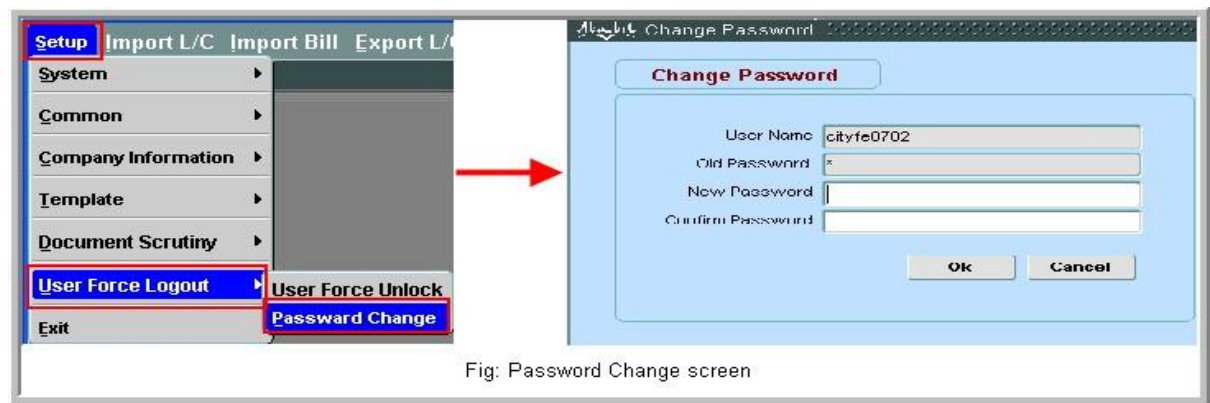


Figure 3.13: Password Change screen

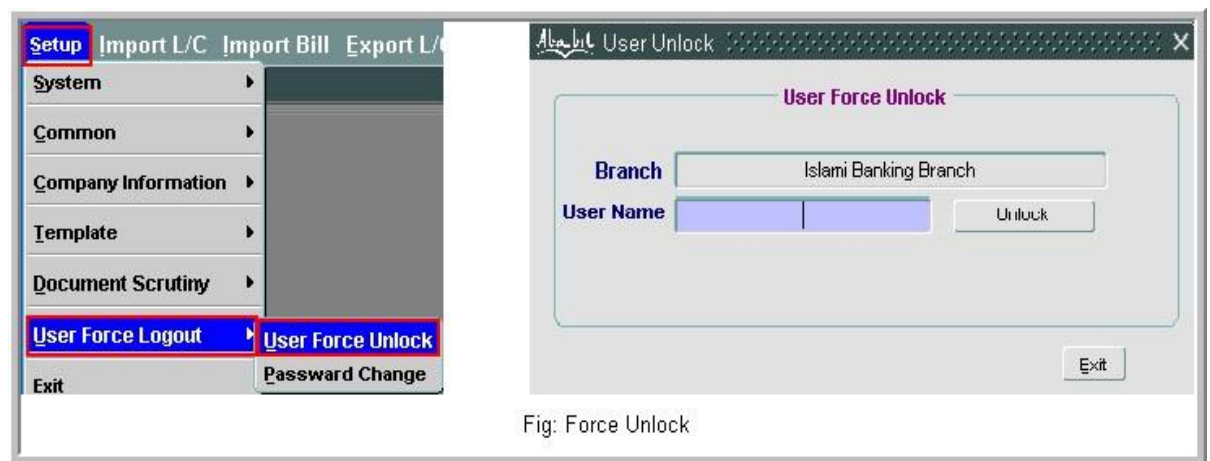


Figure 3.10: Force Unlock

Please input the desired valid user name on 'User Name' input field. And then press button 'Unlock'. Application will unlock the user.

### 3.4 Challenges:

Network configuration is certifiably not a straightforward matter. That is impossible in a brief span and it is beyond the realm of imagination to expect to know all of thing about networking.

This is additionally large challenge to know networking. At the point when I created my task, I needed to fare thee well, that it would not off-base. Innovation is getting a great deal of better step by step, so it is additionally a major test to work intimately with it. The greatest test for me was to work with new individuals in another condition. Here I needed to get familiar with a ton of new things and to apply them again, which was

truly challenging for me Keeping this in mind was extremely hard to take a shot at and I have experienced numerous issues for this.

At the point when I start network configuration, I needed to confront the most issues. Since I didn't think a lot about network before that, so there was a great deal of difficult work to do network configuration.

## **Chapter 04: Competencies and Smart plan**

### **4.1 Competencies Earned**

To accomplish something great, there must be a ton of rivalry.

I need to set myself up such as myself. I could match the market and my activity possibilities were created. For this, I need to adapt further developed work, which will make me increasingly effective

In this way, the challenge is such a way, that I can think about somebody's abilities and I have a thought regarding my very own aptitudes. This is significant for me and I will be urged to work more earnestly and it is extremely ultimate truth that hardworking is the key to achievement.

### **4.2 My Smart Plan**

- Most will know about Network basic, Device details, Cable configuration.
- You should know about IP address, Sub netting, VLSM.
- You need to know about the topology and learn about the codes used them.
- I have to be careful, so that create a unique network.

## **Chapter 05: Conclusion and Future Scope**

### **5.1 Conclusion**

I accomplished numerous encounters from this internship, which will assist me with playing a job in my future work. I had the option to do different network configuration extends and got the chance to take a shot at different tasks, which helped me to act naturally dependent. This internship will assume a significant Role in making me a propelled profession. This will assist me with working in an IT Company, bank and it will be urged to accomplish more later on.

### **5.2 Scope for Future**

On the off chance that I have no genuine experience, getting a decent line of work turns into a major test for me. Be that as it may, an effective temporary position will assist me with building a superior profession. That will demonstrate to be useful in my fantasies. So I trust this temporary position demonstrates to be productive for me later on.

## references

- [1] Siblbld.com. (2019). SIBL. [online] Available at: <http://www.siblbld.com>. [Accessed 8 October. 2019].
- [2] Anon, (2019). [online] Available at: • <http://www.siblbld.com/home/profile>. [Accessed 12 November, 2019].
- [3] Siblbld.com. (2019). SIBL. [online] Available at: <http://www.siblbld.com/home/vision> [Accessed 8 November. 2019].
- [4] Anon, (2019). [online] Available at: <http://www.siblbld.com/home/csr> [Accessed 10 October 2019].
- [5] Anon, (2019). [online] Available at: [http://www.siblbld.com/home/shariah\\_committee](http://www.siblbld.com/home/shariah_committee). [Accessed 22 October 2019].
- [6] Press, C. (2019). > Certification Info. [online] Ciscopress.com. Available at: <http://www.ciscopress.com/markets/detail.asp?st=4471>. [Accessed 12 November 2019].
- [7] J.Claessens, V. Dem, D. Cock, B. Preneel, J. Vandewalle (2002) “On the Security of Today's On-line Electronic Banking Systems”. [2] Andrew S. Tanenbaum, (2002)“Computers network”. [3] CCNA study Guide, Available At: [https://www.google.com.bd/?source=search\\_app&gws\\_rd=cr,ssl&ei=y9bVYniG4KsuQ](https://www.google.com.bd/?source=search_app&gws_rd=cr,ssl&ei=y9bVYniG4KsuQ)
- [8] Computer Network Device, Available At: <http://basic-networking.blogspot.com/2007/08/computer-network-devices-and-component.html>
- [9] Stuttgart Available At: <http://www.ba-stuttgart.de/~schulte/html/55771.html#HDR3>
- [10] Understanding of ATM in Bangladesh Available at: [http://www1.searchresults.com/web?l=dis&q=understanding+ATM+in+bangladesh&o=APN10645&apn\\_dtid=^BND406^YY^BD&shad=s\\_0042&apn\\_uid=9734054855124](http://www1.searchresults.com/web?l=dis&q=understanding+ATM+in+bangladesh&o=APN10645&apn_dtid=^BND406^YY^BD&shad=s_0042&apn_uid=9734054855124).
- [11] Access Control List (ACL) Available at: [http://en.wikipedia.org/wiki/access\\_control\\_list](http://en.wikipedia.org/wiki/access_control_list).
- [12] standard-access-control-list Available At: <http://www.answers.com/topic/standard-access-control-list>.
- [13] Computer networking Available at: [http://compnetworking.about.com/od/vpn/g/bldef\\_vpn.htm](http://compnetworking.about.com/od/vpn/g/bldef_vpn.htm). [14] OWASP Available At: [https://www.owasp.org/index.php/Category:OWASP\\_Top\\_Ten\\_2013\\_Project](https://www.owasp.org/index.php/Category:OWASP_Top_Ten_2013_Project).



## **Appendices**

### **Appendix A: Internship Reflection**

Essentially, two choices were before me, one expected at an internship and the other at one Something I like the internship here in light of the fact that I get down to earth work experience which is valuable to me as it will assist me with working together and gain proficiency with the principles of the office I think it will assume a supportive job in my profession later on. That's the reason I enjoyed Social Islami Bank Limited since it is a decent quality organization that gives great help and is currently a presumed organization. That's the reason I intend to give an internship here. For internship I picked networking in light of the fact that it is currently a help that is often utilized. By doing this I can feature my work understanding the world over. I accept that with the information I have gained from this, I will have the option to work straightforwardly in my professional life. In conclusion, I might want to state that I see myself as fortunate to work with this gathering, and Social Islamic Bank Limited is sincerely appreciative for giving me this chance.

### **Appendix B: Company Detail**

**SOCIAL ISLAMI BANK LIMITED**

#### **Corporate Office**

City Center, Level: 19-22  
90/1, Motijheel Commercial Area  
Dhaka-1000  
Bangladesh.  
Phone: 09612001122  
SWIFT: SOIVBDDH  
E-mail: info@sibl-bd.com  
URL: www.siblbld.com  
Webmail: webmail.sibl-bd.com.