

**COMPUTER NETWORKING & IT SYSTEM ADMINISTRATION**

**BY**  
**JOBAYDA KHANAM**  
**ID: 172-15-10127**

This report presents a partial fulfillment of the requirements for a Bachelor's degree in Computer Science and Engineering.

Supervised By

**ISRAT JAHAN**  
**Lecturer**  
Department of CSE  
Daffodil International University



**DAFFODIL INTERNATIONAL UNIVERSITY DHAKA,**  
**BANGLADESH OCTOBER 2020**



## **APPROVAL**

This Internship report titled “COMPUTER NETWORKING & IT SYSTEM ADMINISTRATION” submitted by “JOBAYDA KHANAM, ID: 172-15-10127” to the Department of Computer Science and Engineering, Daffodil International University, has been accepted as satisfactory for the partial fulfillment of the requirements for the degree of B.Sc. in Computer Science and Engineering and approved as to its style and contents. The presentation has been held on \*08-10-2020\*

### **BOARD OF EXAMINERS**



**Dr. Syed Akhter Hossain**

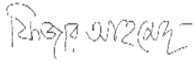
**Professor and Head**

Department of CSE

Faculty of Science & Information Technology

Daffodil International University

**Chairman**



**Dr. Fizar Ahme**

**Assistant Professor**

Department of Computer Science and Engineering

Faculty of Science & Information Technology

Daffodil International University

**Internal Examiner**



**Abdus Sattar**

**Assistant Professor**

Department of Computer Science and Engineering

Faculty of Science & Information Technology

Daffodil International University

**Internal Examiner**



**Dr. Mohammad Shorif Uddin**

**Professor**

Department of Computer Science and Engineering

Jahangirnagar University

**External Examiner**

## DECLARATION

I hereby declare that the internship report has been completed by me **JOBAYDA Khanam, Israt Jahan**, lecturer, Department of CSE supervision of **Daffodil International University** Computer Science and Engineering, Department of Daffodil International University.

I declare that neither the internship, the internship report, nor any part of the award of a degree or diploma elsewhere has been reported. I announced that I **Fareast Islami Life Insurance Company (FILIC)**, collect information from the book, and I declare that any falsification of information and materials from a variety of sources and Internet sites are not used in this report.

### Supervised by:



**Israt Jahan**  
Department of CSE  
Daffodil International University

### Submitted by:



**Jobayda Khanam**  
ID: 172-15-10127  
Department of CSE  
Daffodil International University

## ACKNOWLEDGEMENT

First I express my sincere thanks and gratitude to Almighty God for his divine blessings that made it possible for us to successfully complete our final year internship.

I am also obliged to **Mahmud Hasan Sajeeb**, Network and System Admin of **Fareast Islami Life Insurance Company Limited**. Without their incessant support I can't complete my Internship in this company.

I would like to thank my sincere and energetic supervisor **ISRAT JAHAN**, Lecture Dept. of Computer Science and Engineering, Daffodil International University, Dhaka. I really grateful and wish profound gratitude to her pleasant & interest of my supervisor in the field of "**Computer Networking and IT System Administration**" to Conducts this internship. I am extremely grateful to her endless patience, guidance, constant back-up, energetic supervision, important advice, reading many lower draft and correcting them at all stage her encouragement have made it possible to complete this internship.

I would like to say heartiest gratitude to **Dr. Syed Akhter Hossain**, Professor and Head, Department of CSE. I really pleased and proud feeling of gratefulness respect to our respected faculty member and the staff of CSE department of Daffodil International University, for take this opportunity.

I file thanks to whole course friend in Daffodil International University, those who help in various ways take part in completing course work. And ultimately, my heartiest thanks to my parents. Without there support and inspiration I would not have reached where I am today.

Finally, with due respect, I must acknowledge the constant support and parents of patients.

## ABSTRACT

Collection of devices that allow a network computer, server, someone else, network device, accessory, or other interconnected data exchanger. An example of a network is the Internet, which communicates with millions of people around the world. A server is a computer designed to process requests and provide information to another computer via the Internet or local network. Internetworking is the connection of computer networks through gateways and routers. There is various type of work in the network that is why also different types of server have. For Example- Network Design, Network Server, Router Configuration, VLSMs, Troubleshooting, easy subnetting, internetworking operating system, IP Addressing, Routing And Configuration. We call the exchange of data between multiple computers a network. We exchange data through a special computer that is the server computer and from that data is sent to another. There are separate computers used for servers such as web server, DNS server, proxy server, mail server, firewall, FTP server. Every network works differently because It is not possible to maintain core of a network. Our custom network is connected computer to computer by Local area network and resource sharing each other. we need to secure our information. so obviously need to know about the computer network and security.

# TABLE OF CONTENTS

<b>CONTENTS</b>	<b>Page No</b>
Approval	I
Declaration	ii
Acknowledgement	lii
Abstract	Iv
Table of Contents	v-vi
List of Figures	vii
<b>CHAPTER 1: INTRODUCTION</b>	<b>1-3</b>
1.1 Introduction	1
1.2 Motivation	1
1.3 Objectives	1,2
1.4 Introduction to the Company	2
1.5 Report Layout	2,3
<b>CHAPTER 2: ORGANIZATION</b>	<b>4-8</b>
2.1 Introduction	4
2.2 Product and Marketing Situation	4,5
2.3 SWOT Analysis	6,7
2.4 Organizational Structure	8
<b>CHAPTER 3: INTERNSHIP TASK, PROJECT AND ACTIVITIES</b>	<b>9-37</b>
3.1 Daily Task and Activities	9-15
3.2 Events and Activities	15-31
3.3 Project Task and Activities	32-36
3.4 Challenges	37

**CHAPTER 4: COMPETENCIES AND SMART PLAN**

4.1 Competencies	38
4.2 Smart Plan	38
4.3 Reflections	38

**CHAPTER 5: CONCLUSION & FUTURE CAREER 39**

5.1 Discussion and Conclusion	39
5.2 Scope for Further Career	39

**REFERENCES 40**

**APPENDICES 41**



## LIST OF FIGURES

<b>FIGURES</b>	<b>PAGE NO</b>
Figure 2.1: Organization of Fareast Islami Life Insurance Company Limited	8
Figure 3.1: Virtual Machine Wizard	10
Figure 3.2.1: Static Configuration	15
Figure 3.2.2: DHCP,DNS&HTTP Configuration	16
Figure 3.2.3: DHCP,DNS,HTTP server setting	17
Figure 3.2.4: IP address & subnet mask setting	18
Figure 3.3.1:VLAN routing Configuration	32
Figure 3.3.2: GSM Simple Configuration	36



# CHAPTER 1 INTRODUCTION

## 1.1 Introduction

This is the information technology age. Now a days a large number of people use internet technology all over the world and the server is not such an essential part. CCNA is a well known confirmation among COMPUTER system engineers. Full CCNA type Cisco guaranteed system partner. This is the essence of a recognized program architects for all sorts. It includes passage level system engineers, system management system pillow planners and system experts.

It is measured that more than 1 million CCNA Testaments have been offered since it was first run in 1998. The CCNA announcement system has been given a wide range of ideas. This makes it possible to get ready for the latest system development they are probably going to deal with.

## 1.2 Motivation

We call the network if two or more computers are bound and capable of exchanging data or information. We need to call some special PC servers when we want to increase the number of PCs and exchange data from one time to another. There are different types of servers that are why there are different types of work within the network. Patterns for network design, network server, router configuration, IP addressing, routing and configuration.

It is measured that more than 1 million CCNA Testaments have been offered since it was first run in 1998. The CCNA announcement system has been given a wide range of ideas. This makes it possible to get ready for the latest system development they are probably going to deal with.

## 1.3 Objectives

- ✓ Computer science internships are designed to provide students with work 8experience while still in school, equating academic training with work experience, and helping students transition from work to classroom.

Combine the skills found there for writing each unique resume purpose.

- ✓ To make employers efficient
- ✓ Learn how to work and lead the team
- ✓ Continuously develop work energy and attitude.
- ✓ That's all there is to IT and networking systems ✓ Have a good idea of how networking works in all areas.
- ✓ Learn all kinds of router configurations.
- ✓ Learn the responsibilities of an IT officer.
- ✓ Will have good skills professionally.

## **1.4 Introduction to the company**

**Fareast Islamic Life Insurance Company Limited** Dhaka, Bangladesh is the largest company. **Fareast Islami Life Insurance Company Limited**, a direction 3<sup>rd</sup> propagation company in the insurance branch, created its operations May 29, 2000 . It was certified public limited company under the Certificate Companies May 29, 2000. Listed with Exchange.

## **1.5 Report Layout**

**In Chapter (1)** I expressed the motivational purpose of internship, internship from company , Introduction.

**Chapter (2)** I have explained my internship procedures. This chapter provide info about where internships have been attached to undertaking this program. About how, internship work did not execute include about the company, what is IT services and what is the role in computer networking and security work market. 8

**In Chapter (3)** I described the daily work and activities, events and challenges.

**Chapter (4)** I have explained the competition is earned, smart plan, reflection.

**In Chapter (5)** I have described there are no conclusions and future opportunities.

And the conclusion of the writing

## CHAPTER 2: ORGANIZATION

### 2.1 Introduction

**Fareast Islami Life Insurance Company Limited**, a leading 3rd generation company in the insurance sector, started its operations May 29, 2000 and was certified as a public limited company under the Certificate Companies Act on May 29, 2000. Listed with Exchange.

At present the authorized capital of the company is Rs.1000 crore and the paid up capital is Rs.747.42 million. As of December 31, 2018, the total number of shareholders was 8,066. The shares of the company have been traded on both the Dhaka and Chittagong stock exchanges of the company from the very beginning. The total market value of the company's shares is Rs 723.74 million as on 31 December 2018.

The financial performance of the company is very strong and positive. As on 31st 8December 2018, the total assets of the company stood at Rs. 33,329.26 lakhs and Rs.

### 2.2 Product Plan and Marketing Situation

In various operations Fareast Islamic Insurance Company Limited, the main function being briefly-described work:

- ✓ Ekok Bima
- ✓ Sarbojonin Bima
- ✓ Group Bima
- ✓ Child Protection
- ✓ Hajj Bima
- ✓ Retirement Plan
- ✓ Fixed Deposit
- ✓ Payment Endowment Assurance Plan
- ✓ Money Back Plan
- ✓ Monthly Saving plan

## **M-Insurance**

IDRA has informed the policyholder about the information regarding the Short Message Service (SMS) policy established to comply with Fareast Islamic Life Insurance Company Limited (FILIC). SMS are usually sent to policyholders using the Creating messaging system within three days of confirmation of payment. Confirmation of policy payments, payments, maturity and other related information due to date is usually sent via SMS.

## **Data Center**

Security Measures to improve the new surveillance system, the Access Control System Head Office with Fingerprint has been implemented in all departments everywhere. The maintenance and newly established data center is run by the IT department. Maintenance and expansion of existing servers, networks, cooling systems, power systems, surveillance systems is properly managed by skilled engineers in the IT department. To ensure a reliable and secure environment, Data Center Security is equipped with eminent Cisco firewalls, core switches, access level switches, routers, etc. connected to the data center of all departmental offices, service centers & zonal offices and connected to the data center.

## **Near Data Center (NDC)**

For growth, it has set up Services and Extra Near Data Center (NDC) in Narayanganj. The continuity of business during the bad times including restoration of all IT services over time has been considered during the establishment of this NDC. Unnecessary services Unnecessary capacity has been considered for ensuring cooling, connection etc. World class hardware, network, power, surveillance systems have been installed to satisfy the demand.

## 2.3 SWOT Analysis

SWOT analysis means understanding your strengths and weaknesses, and for identifying both opportunities you can open up to the threat faced. **Strength:**

**Strong Board of Director:** The Board of Director of that insurance is stronger of than other company.

**Top Management:** The top management of the Fareast Islami Insurance Co. They contributed yearly towards the growth and development of the company.

**Market Value Statement:** Detailed market value will be displayed in the workplace report of the appraiser from a market for the share price. This may be the difference between the low price and the value of the books in the shares of a consultant. Contact higher market price guidelines Inferior material is made for equals

The value of a single market of communication, Rs 4723.74 million, the price of a single book, Rs 747.42 million, the resource test, December 2018 31, added Rs 3,976.32 million as tax, the price of Rs 4,595.69 million in 2017.

The employers of Fareast Islamic Insurance Company are limited as many insurance companies, trade business market is very stable business person, mobile SIM company etc.

### **Weakness:**

This weakness of Fareast Islamic Insurance company limited is the key weakness for the limited company to push the insurance for lagging behind other competitors.

1. Efficiency New tract ablation is required for flat market
2. Large sums of money need to be set up in the business
3. Contact for small resources
4. Many price tariff and location options Advertised are –

✓ **Billboard:** There are have some Billboard of Fareast Islamic Insurance company limited. It's not enough for marketing performance.



**Opportunity:**

1. Population change age structure
2. Increasing the number of UK families
3. Simple duty introduction
4. Modification of regulatory structures

**Threats:**

Economic Crisis - Households are less likely to trust the digital-communications market as their broadband subscriptions make up for the lack of a stock market.

It remains to be seen how far consumers will have access to the internet. There are many insurance companies in Bangladesh that can be persuaded to accept. But Fareast Islamic Insurance Company relies on Islamic insurance systems. Conflict is a part of life. It has a negative side as a positive aspect of a reality conflict. Negative side conflicts are bad.

Bad conflicts are detrimental to the organization and must be avoided.

Negative consequences from conflict can be devastating

## 2.4 Organizational Structure



Figure: 2.4 Organizational Structure of fareast islami insurance company limited

## CHAPTER 3 INTERNSHIP TASK, PROJECT AND ACTIVITIES

### 3.1 Daily Task and Activities

#### Daily Task and Activities

Month (1): first month of internship on fareast islami insurance company I learned , performed the following tasks:

- Learning & understanding about Network Components.
- Learning & understanding basic concept of CCNA.
- Learn how to connect local area network by using switching and hub
- Learning & Understanding different type of Router Configuration.
- Learning & understanding the level of router runnig.

Month (2): In second month of internship on fareast islami insurance company .I have learned and performed the following tasks:

- Router Setup:
- Router Software format.
- Router Password format.
- Basic knowledge about GMS(Global System for Mobile Communication )
- Basic knowledge of different types Router configuration and IP address

Month (3): In the third month of internship on fareast islami insurance company limited performed the following tasks. All kind of router configuration

### **3.2 Events and Activities**

- . Maintain monitors and computer systems and networks.
- User set up is account, permission and password.
- Troubleshooting servers and routers.
- Troubleshooting local area networks and switches.
- Fixed network faults.
- Technical support for people using the network.
- 7 days from the administrator and monitoring of network usage.
- It offers solutions to business problems.
- Support the client on the physical steps of the phone or client end. Client Support over the phone or Physical move to client Ends.

### **3.3 Project task Activity**

Purpose:

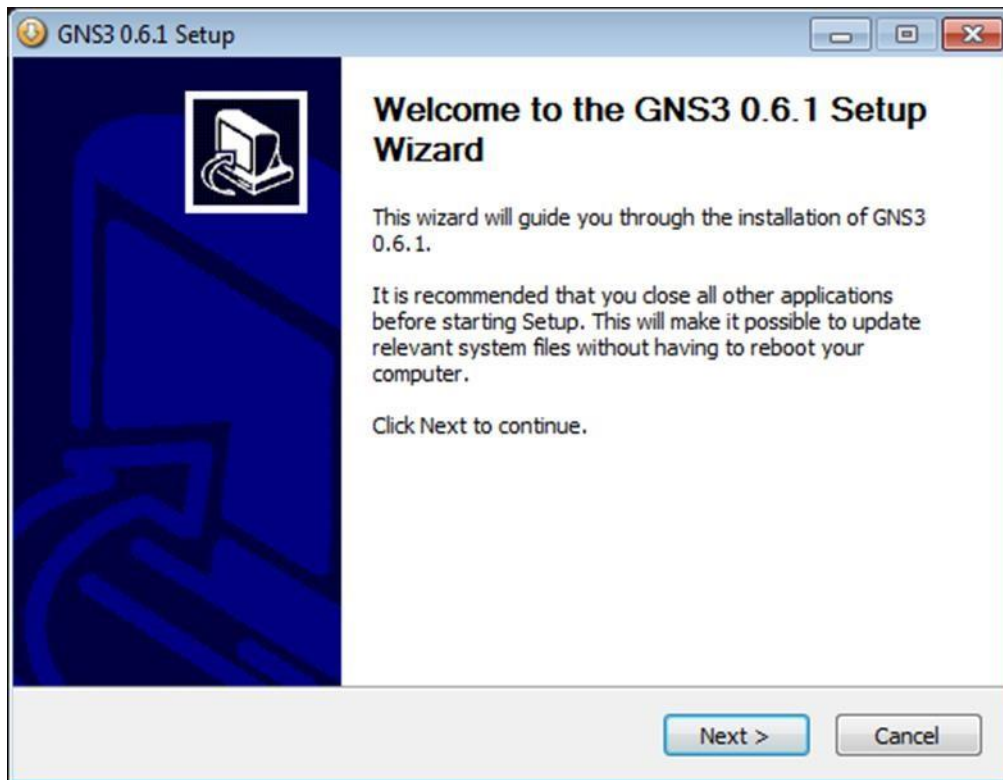
Use PC blue console cable to connect Cisco router or switch

Perform putty and connect to Cisco router or switch or switch using COM1 or PC's own COM port at 9600bps speed

Boot up the Power Cisco device and the device by looking at the console session verification terminal emulator.

Detected Cisco router and switch film IOS Purpose.

**3.1.2** Identify what iOS version and feature currently running Cisco devices setup



Dipath of the textbox show blew display version command.

Identify what iOS version and feature currently running Cisco devices setup Dipath of the textbox show blew display version command.

```
Router#show version
Cisco Internetwork Operating System Software
IOS (tm) 3600 Software (C3620-IK9O3S7-M), Version 12.3(25), RELEASE SOFTWARE (fc1)
Copyright (c) 1986-2008 by cisco Systems, Inc.
Compiled Mon 28-Jan-08 20:16 by alnguyen

ROM: System Bootstrap, Version 11.1(20)AA2, EARLY DEPLOYMENT RELEASE SOFTWARE (fc1)

Router uptime is 23 minutes
System returned to ROM by reload
System image file is "flash:c3620-ik9o3s7-mz.123-25.bin"

This product contains cryptographic features and is subject to United
States and local country laws governing import, export, transfer and
use. Delivery of Cisco cryptographic products does not imply
third-party authority to import, export, distribute or use encryption.
Importers, exporters, distributors and users are responsible for
compliance with U.S. and local country laws. By using this product you
agree to comply with applicable laws and regulations. If you are unable
to comply with U.S. and local laws, return this product immediately.

A summary of U.S. laws governing Cisco cryptographic products may be found at:
http://www.cisco.com/wwl/export/crypto/tool/stqrg.html

If you require further assistance please contact us by sending email to
export@cisco.com.

cisco 3620 (R4700) processor (revision 0x81) with 60416K/5120K bytes of memory.
Processor board ID 24807256
R4700 CPU at 80MHz, Implementation 33, Rev 1.0
Bridging software.
X.25 software, Version 3.0.0.
2 FastEthernet/IEEE 802.3 interface(s)
32 terminal line(s)
DRAM configuration is 32 bits wide with parity disabled.
29K bytes of non-volatile configuration memory.
32768K bytes of processor board System flash (Read/Write)

Configuration register is 0x2102

Router#
```

The running IOS version is:

```
System image file is "flash:c3620-ik9o3s7-mz.123-25.bin"
```

This is the actual image file name that is currently running on the router. This image name is very helpful in identifying this IOS version and feature

### 3.1.3 Configure VLAN, Voice VLAN, VTP and Inter-VLAN Routing

SB1DLSW, configure port Fa0/1-4 and Gig1/1 as trunk port. The range command greatly reduces the amount of repetitive commands you must enter when configuring the same commands on multiple SB1DLSW, SB1ALSW1 and configured for SB1ALSW2 on Trunking SB1DLSW, SB1ALSW1 and SB1ALSW2 Trunking port switch or router connected to the port is another. Trunk mode, and as the native VLAN trunking port all set assign VLAN 6. SB1DLSW date, configure ports Fa0 / 1-4 and Gig1 / 1 as a trunk port. When repetitive commands wide range command to configure multiple ports at the same commands reduces the amount you have to write.

```
SB1DLSW(config)#int range g1/1, f0/1-4
SB1DLSW (config-if-range) #switchport
mode trunk SB1DLSW (config-if-range)
#switchport trunk native VLAN 6
SB1DLSW (config-if-range) #exit On
SB1ALSW1, configured port Fa0 / 1-4 as
trunk port. SB1ALSW1 (config) #int range
f0 / 1-4
SB1ALSW1 (config-if-range) #switchport
mode trunk SB1ALSW1 (config-if-range)
#switchport trunk native VLAN 6
SB1ALSW1 (config-if-range) #exit On
SB1ALSW2, configured port Fa0 / 1-4 as
trunk port. SB1ALSW2 (config) #int range
f0 / 1-4
SB1ALSW2 (config-if-range) #switchport
mode trunk SB1ALSW2 (config-if-range)
#switchport trunk native VLAN 6
SB1ALSW2 (config-if-range) #exit
To see the trunk port, use the following command:
SB1ALSW2#show interfaces trunk
```

### 3.1.4 Link to point T1 Configure point:

The point link point between a branch office and the headquarters site is a common architectural installation. This tab will discuss and demonstrate this WAN link configuration using PP and HDLC Level 2 protocols.

```
R1 con0 is now available

Press RETURN to get started.

R1>enable
R1#configure terminal
Enter configuration commands, one per line. End with CNTL/Z.
R1(config)#interface Serial0/1
R1(config-if)#encapsulation hdlc
R1(config-if)#no shutdown
R1(config-if)#end
R1#
%SYS-5-CONFIG_I: Configured from console by console
R1#
%LINK-3-UPDOWN: Interface Serial0/1, changed state to up
R1#
%LINEPROTO-5-UPDOWN: Line protocol on Interface Serial0/1,
changed state to up
R1#
```

### 3.1.5 Configure point relays in multiple point frames

When it comes to hub and spoke technology, then most of those hubs are deployed with a single point in the multiple point interface. This lab discusses and demonstrates configuration and verification of multi-point frame relay interface.



```

R1 con0 is now available

Press RETURN to get started.

R1>enable
R1#configure terminal
Enter configuration commands, one per line. End with CNTL/Z.
R1(config)#interface Serial0/0
R1(config-if)#frame-relay map ip 10.54.123.2 122 broadcast
R1(config-if)#frame-relay map ip 10.54.123.3 123 broadcast
R1(config-if)#end
R1#
%SYS-5-CONFIG_I: Configured from console by console
R1#

```

## 3.2 Events and Activities

### 3.2.1 Configuring the static routing

The fact is that you will be intent on understanding the static steering that turns you into a CCNA, at best. Static steering is a center of innovation any system expert will get it. It is necessary to design a course from one machine in a system with the ability to statically bounce the following travel path to get that arrangement.

Example:

If you want to get the switch R1 for example 10.61.30.0/24 then R1 needs to know that you can get the neighborhood from R1 where the system is connected to the system 10.61.10.0/24 to send the switch traffic to the system requirements.

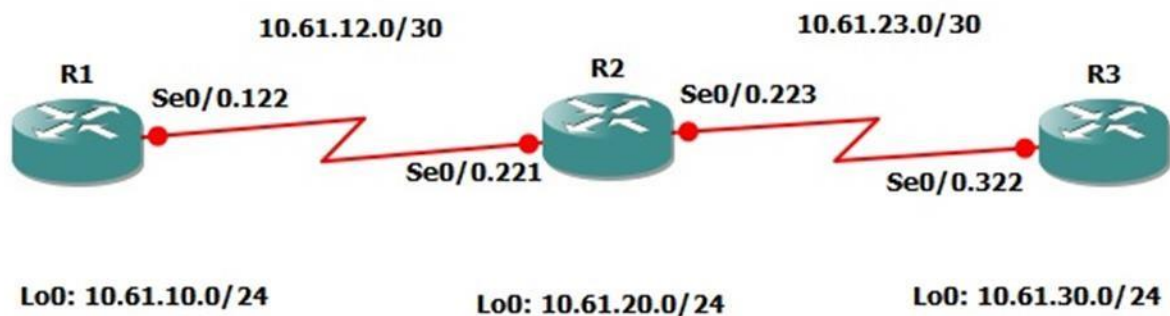


Fig: 3.2.1 Configuring the static routing

Code of configuring static routing:

```
R1#configure terminal
Enter configuration commands, one per line. End with CNTL/Z.
R1(config)#ip route 10.61.20.0 255.255.255.0 10.61.12.2
R1(config)#end
R1#

R2#configure terminal
Enter configuration commands, one per line. End with CNTL/Z.
R2(config)#ip route 10.61.10.0 255.255.255.0 10.61.12.1
R2(config)#end
R2#
```

### 3.2.2 How to configuring DHCP, DNS & HTTP Server along with Router:

- 1) Open the Cisco Packet Tracer.
- 2) Click end device select PC (generic) & Server, select Switch (2960) and select Router (generic).

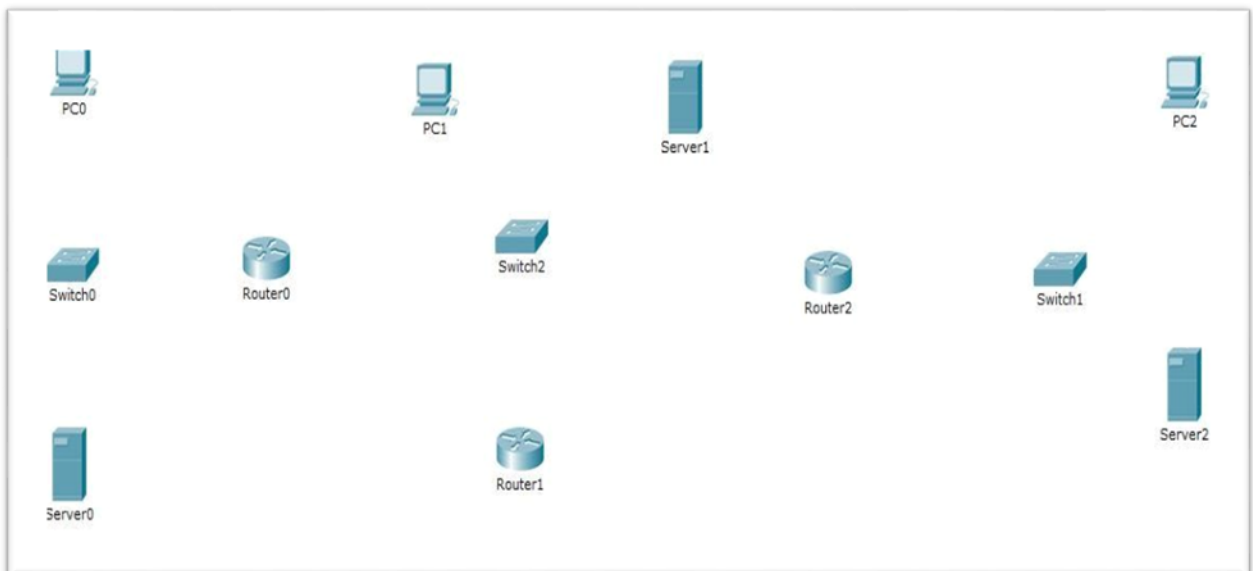


Fig 3.2.2 configuring DHCP,DNS,HTTP:

- 3) Now connection copper straight-through icon cable for pc to Switch & Server to Switch. Then Switch to Router. Router connection we use serial DTE. Then click end

device connect to the Fast Ethernet port to switch Fast Ethernet port and Router serial port to serial port. Then I put the server name DHCP, DNS, HTTP.

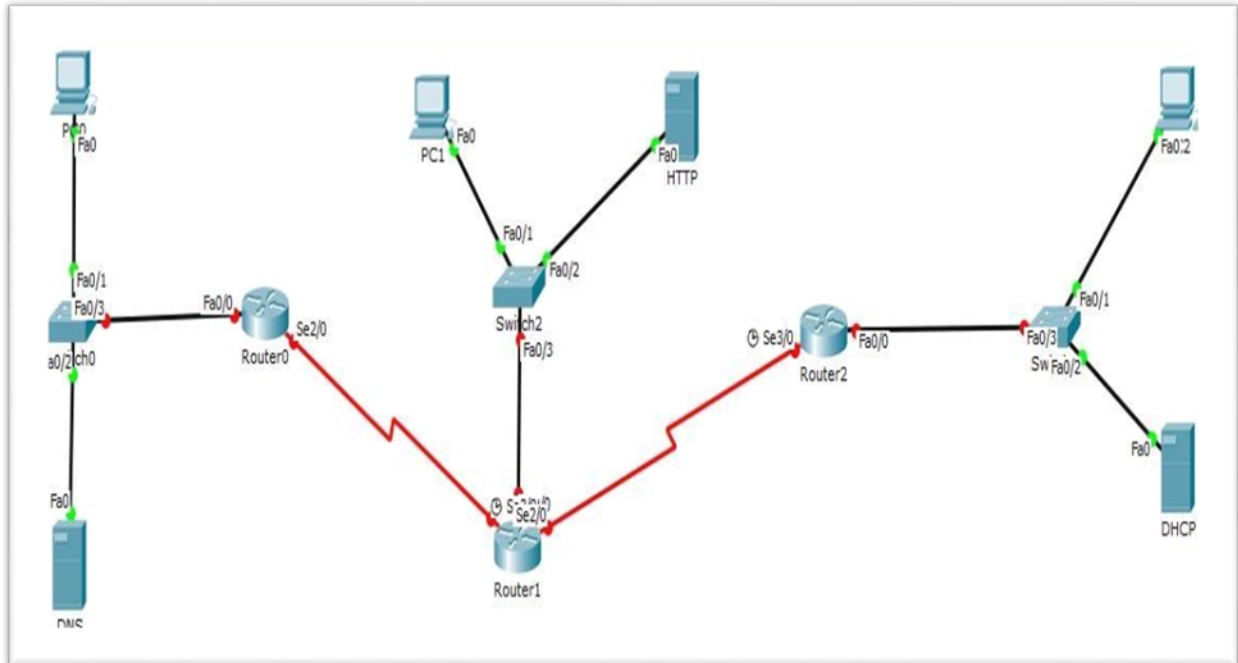


Fig:3.2.3 Connecting router, server DHCP,DNS,HTTP

4) Write the IP address for each PC, Server and Router.

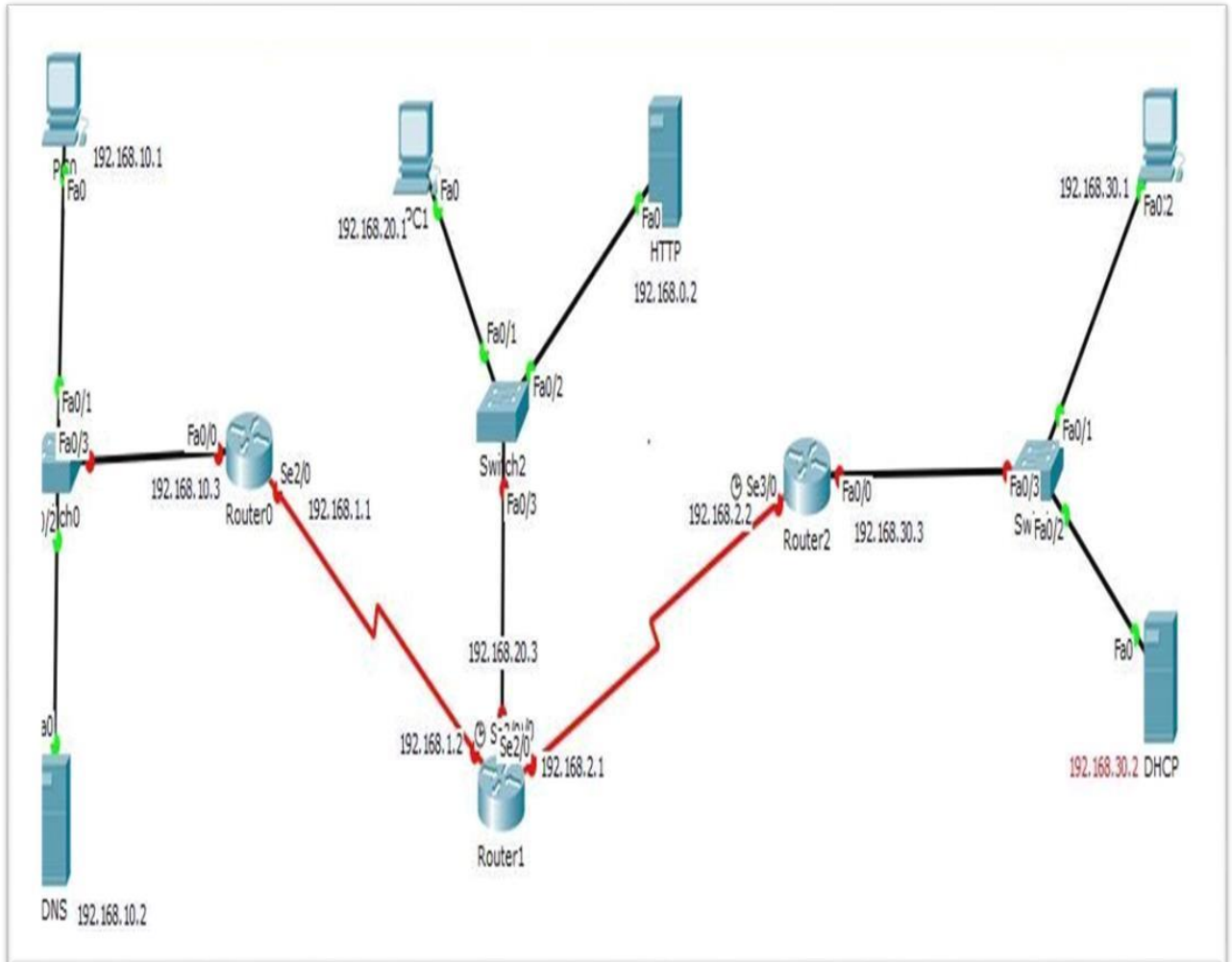
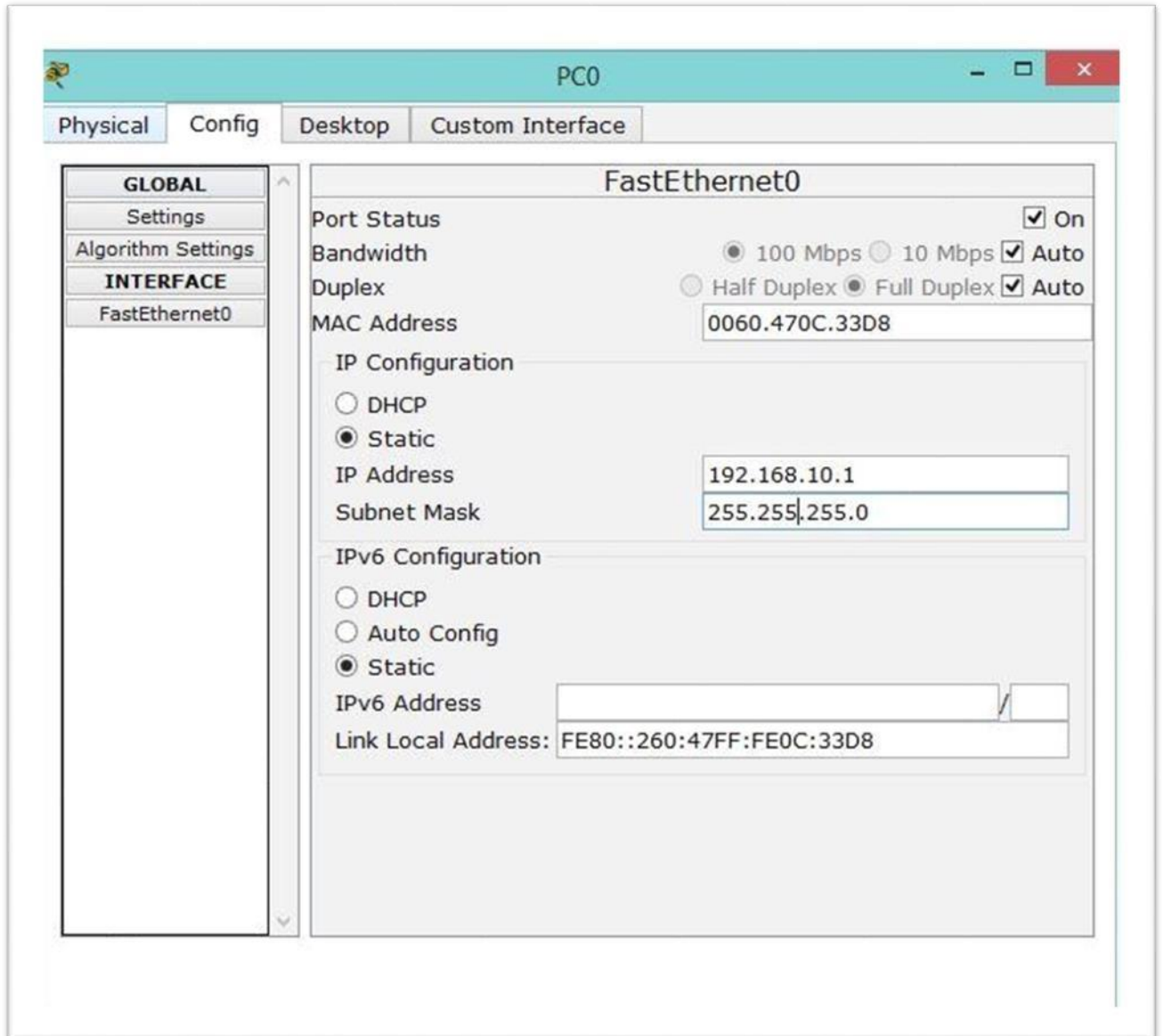
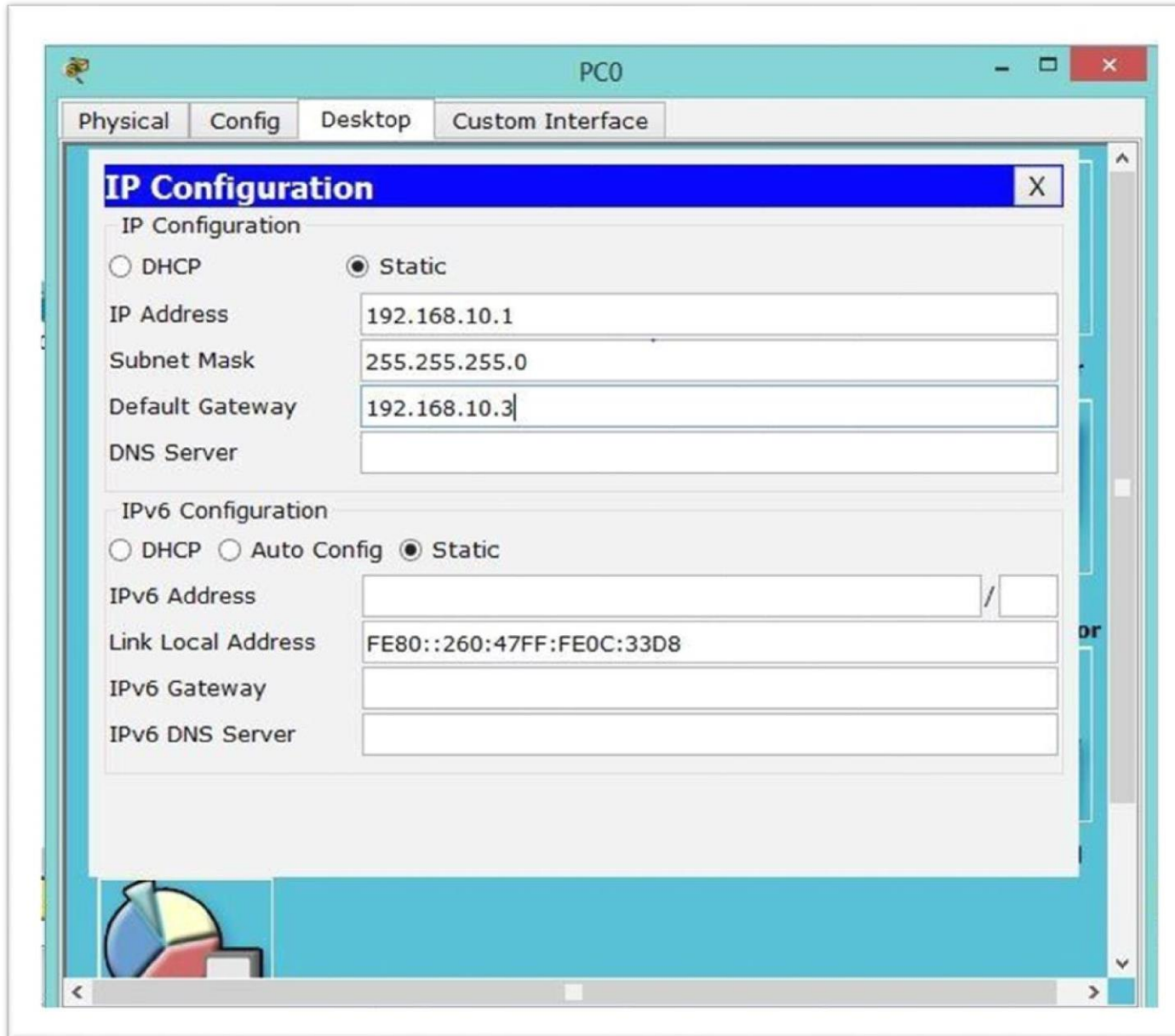


Fig:3.2.4 DHCP,DNS,HTTP IP address setting & subnetting

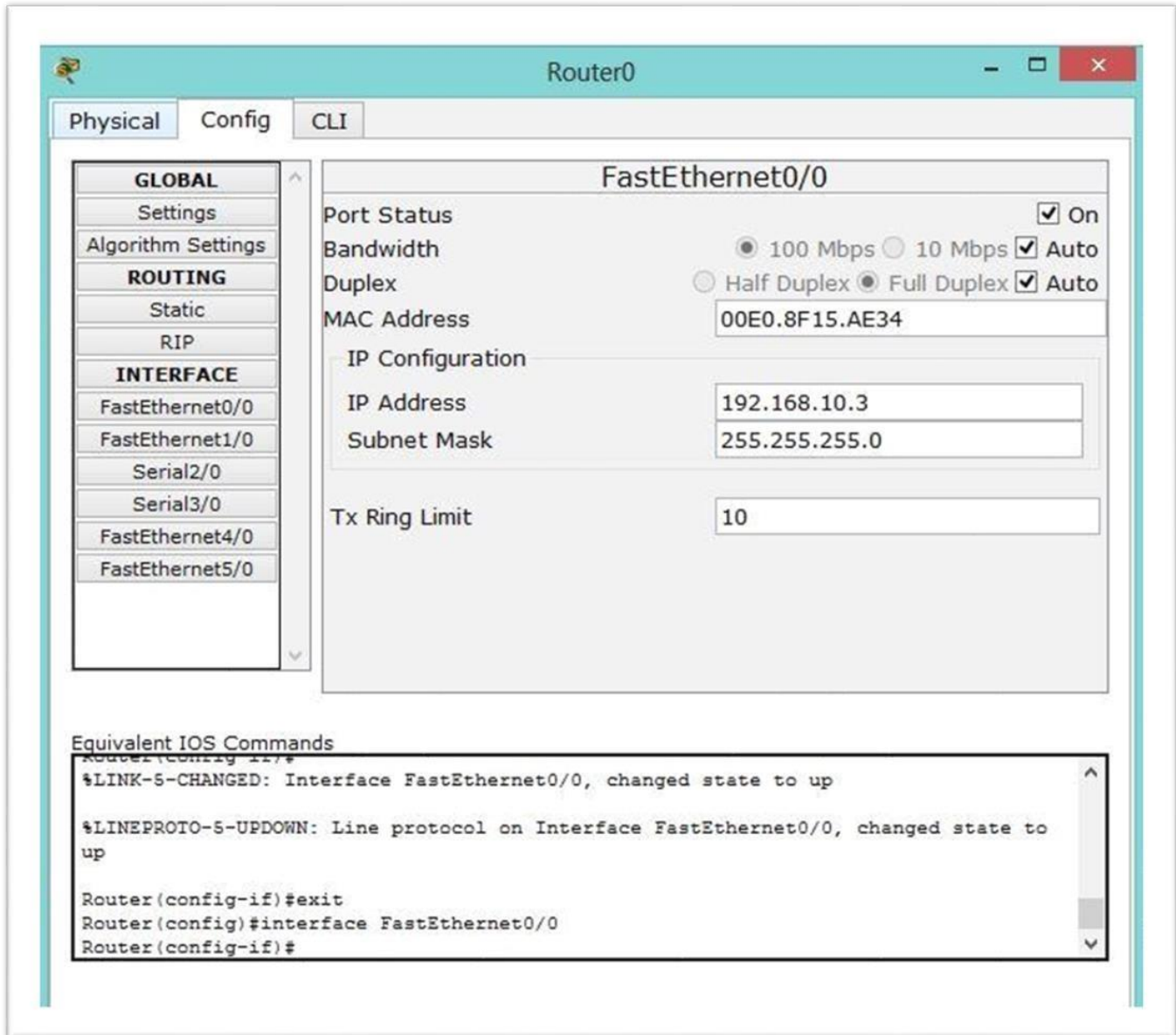
- 5) Now set the IP address and Subnet Mask. Click the end device select the config tab then FastEthernet0 and show the IP configuration and set IP address and Subnet Mask. Then click Desktop click IP configuration put Default Gateway.



As like other end device configuration IP and Subnet Mask.

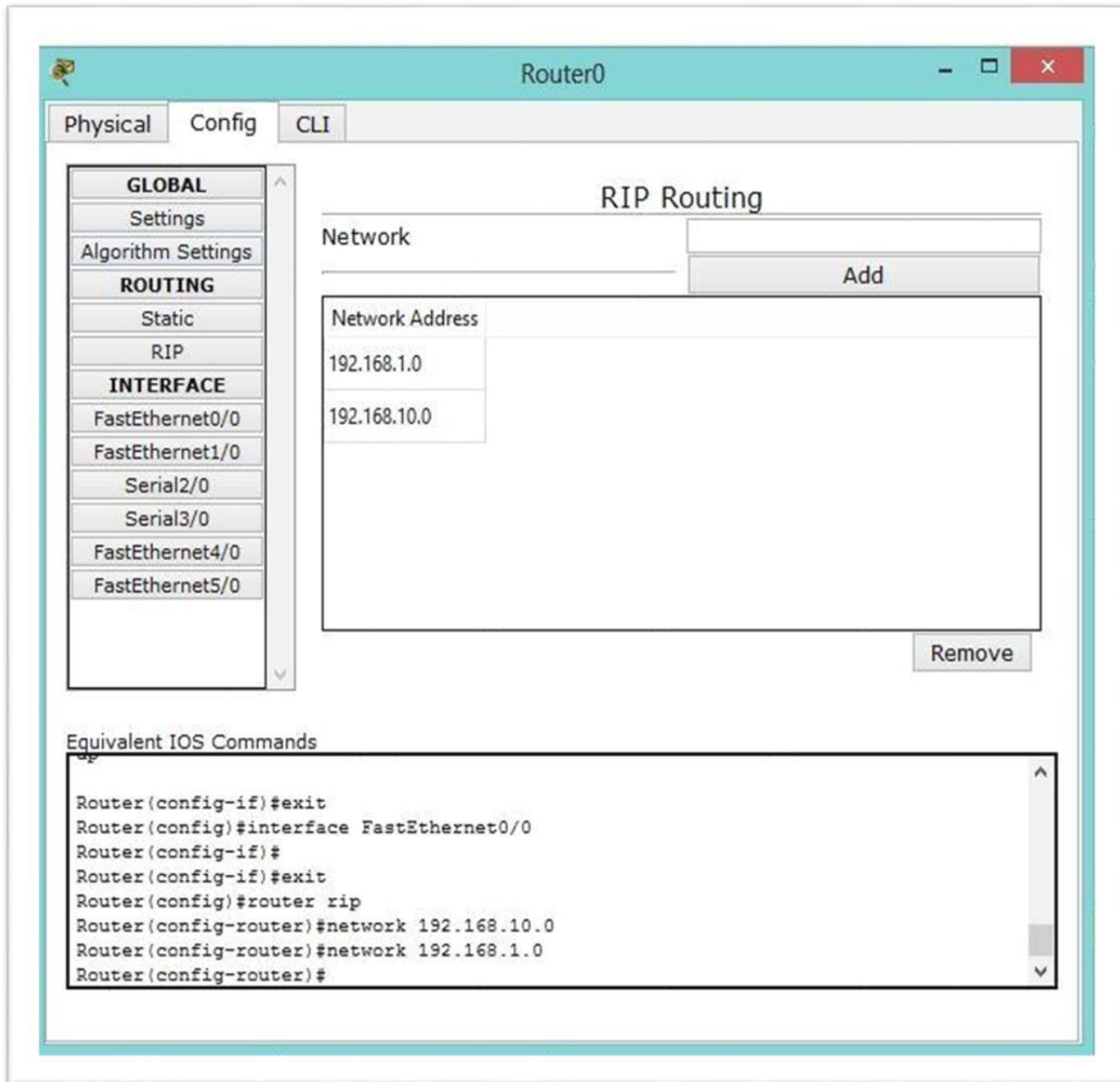


6) Now select Router and configure each port and put IP address for his own port.



Similarly configure all the Router.

Then go to RIP and add his own Network.

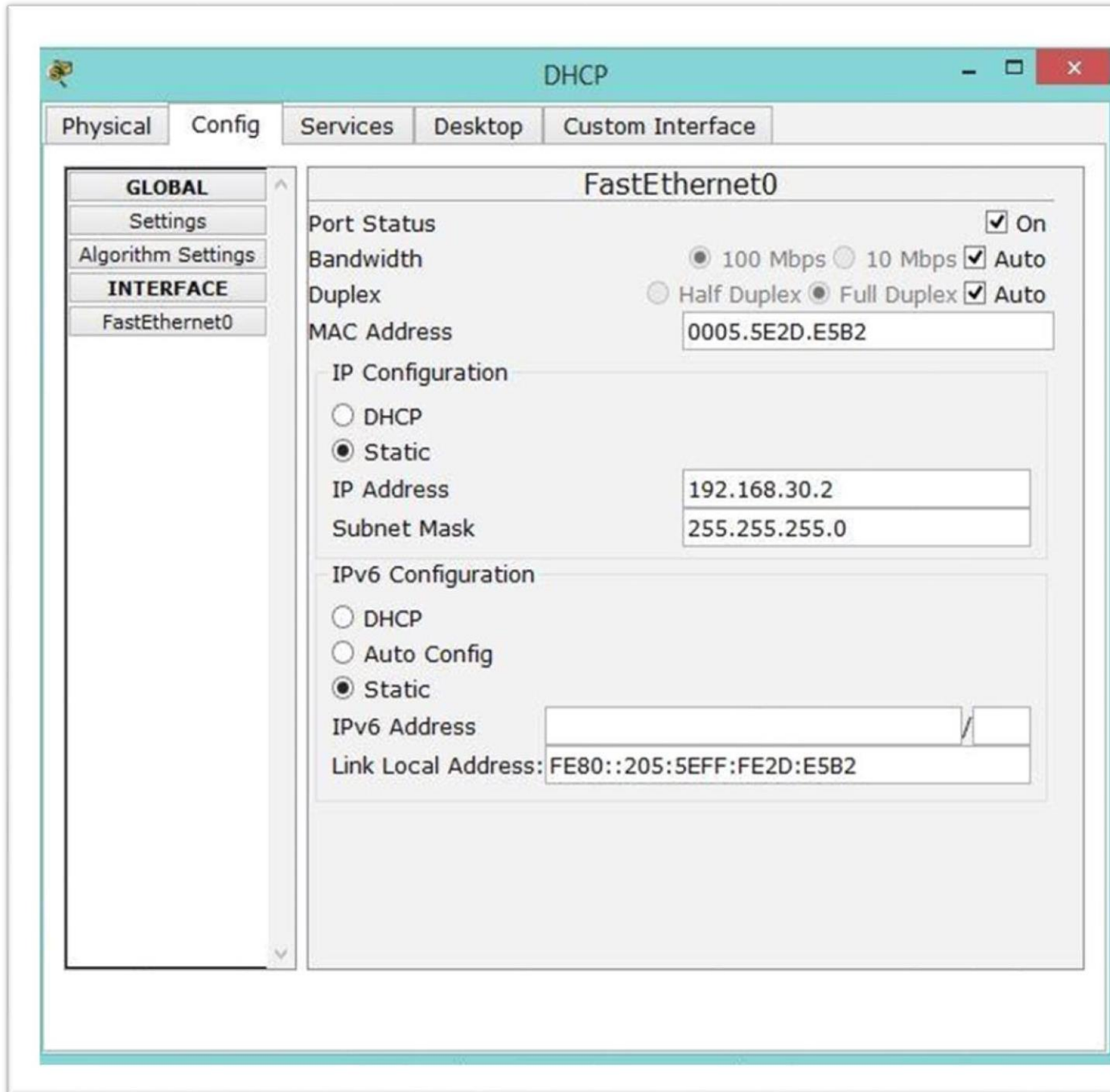


7) Now

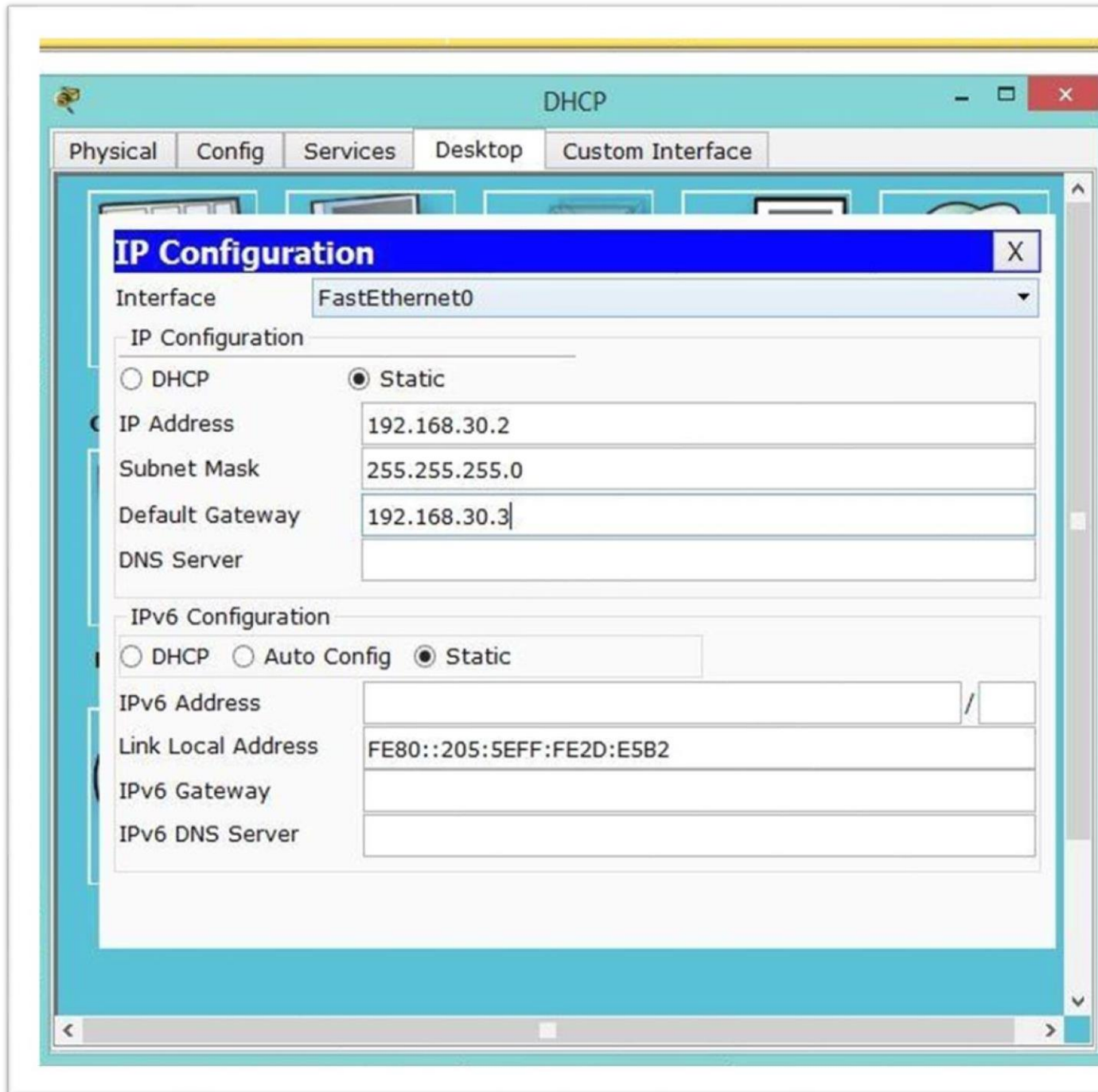
Select DHCP server and configuration it.

Process select server – click config – put IP address & Subnet Mask. & go to Desktop - IP configuration & put Default Gateway.

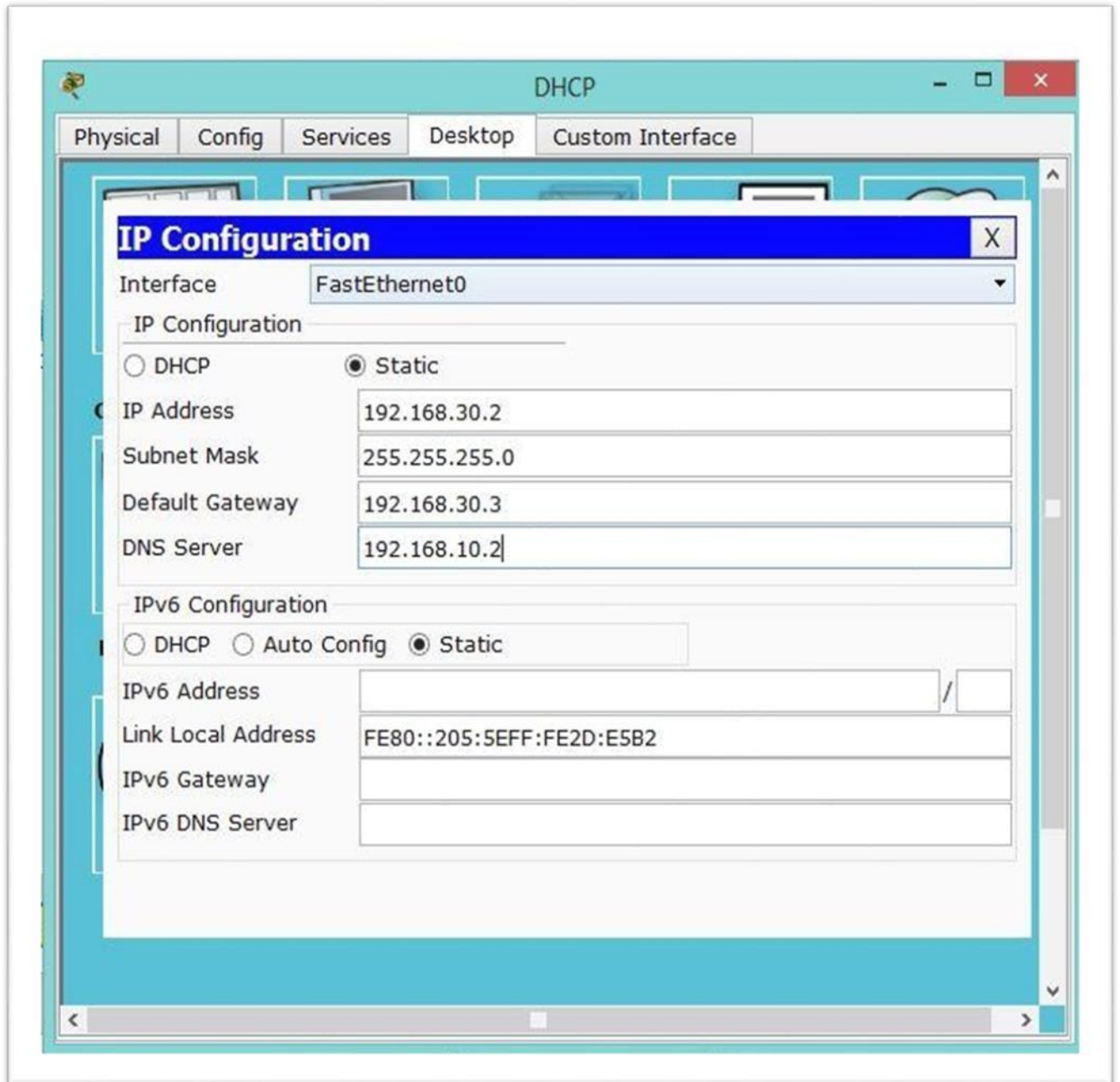




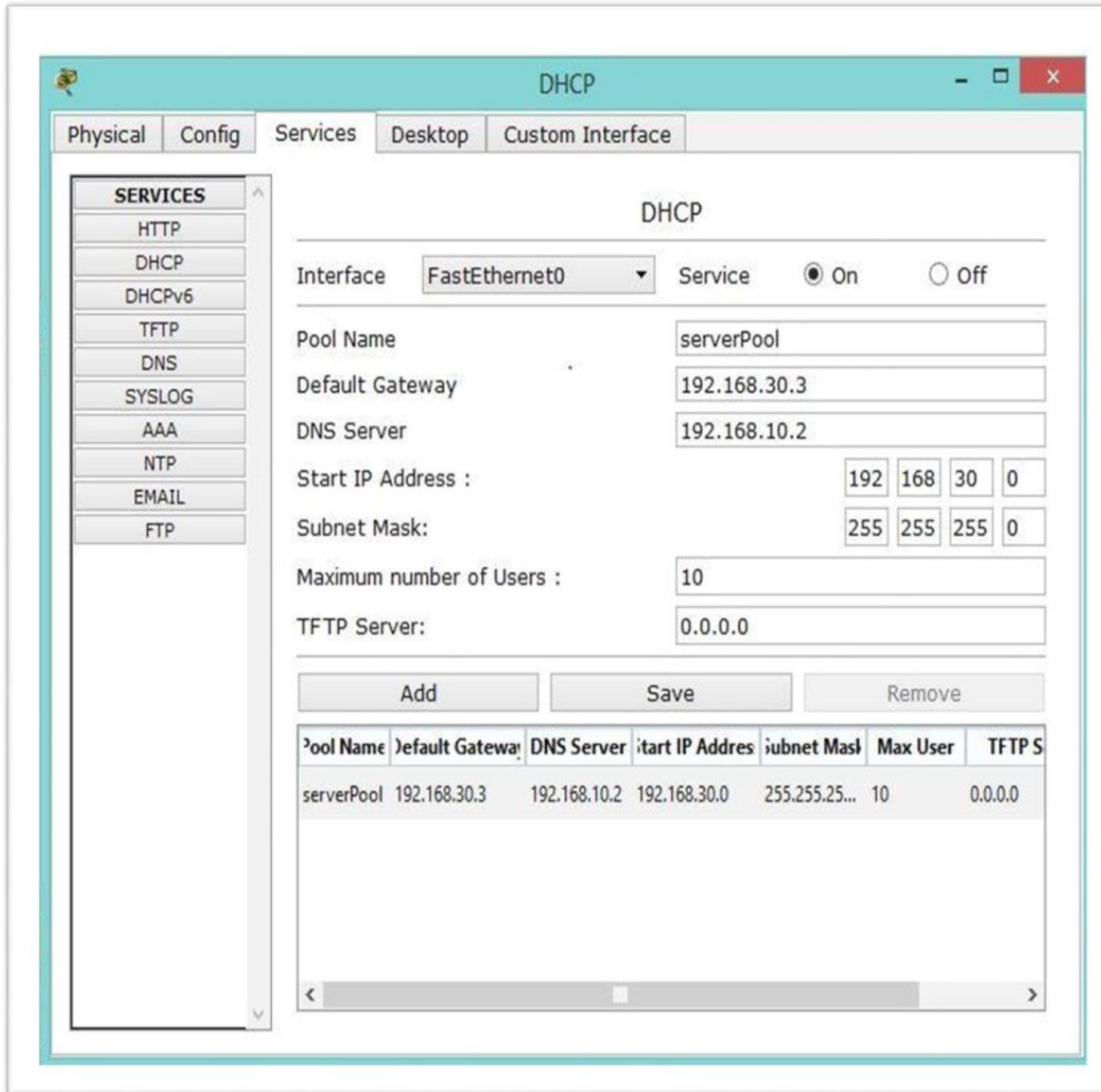
As like configure DNS & HTTP server.



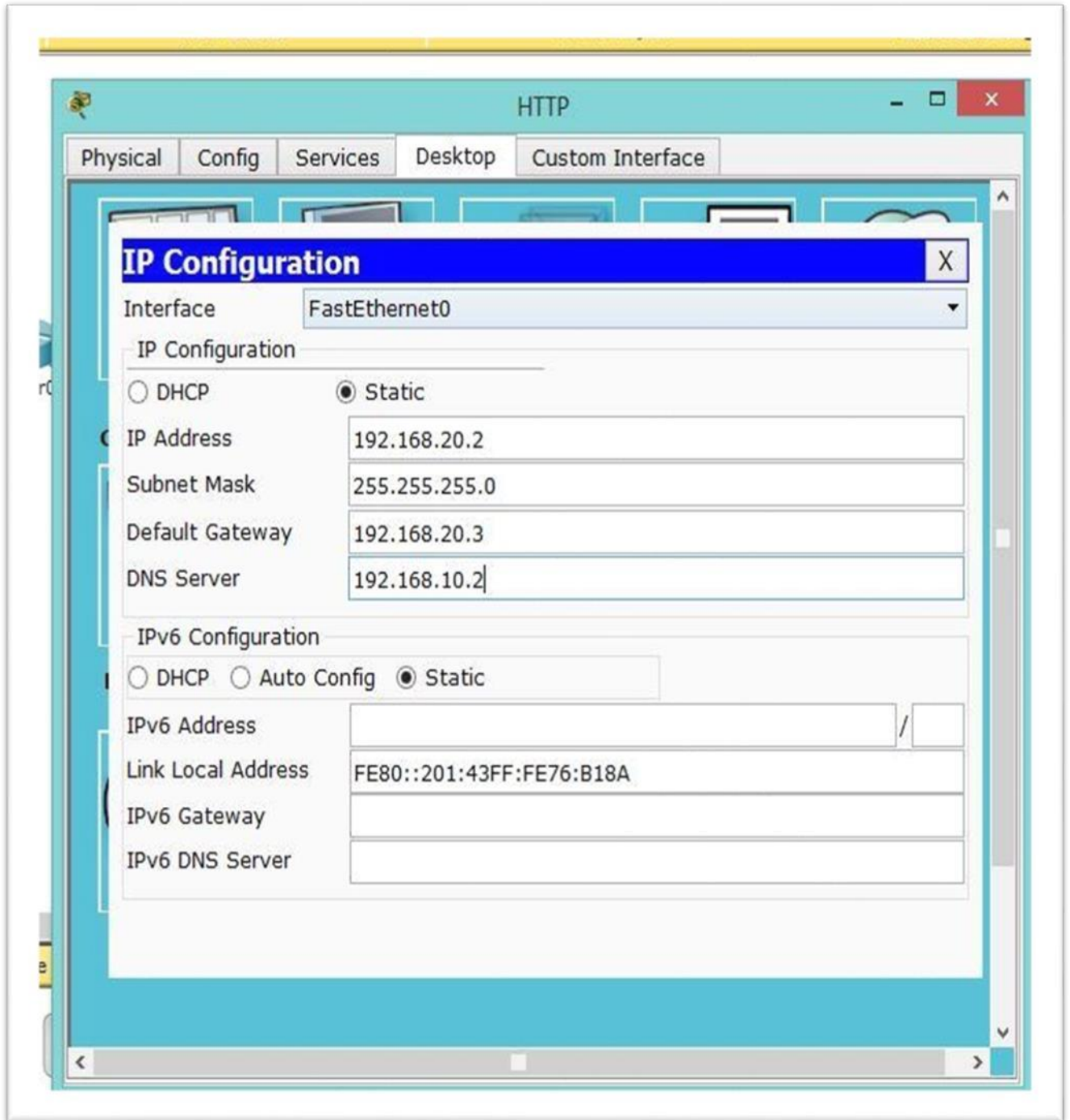
- 8) Now go to DHCP server – desktop – IP configuration & put DNS server IP address in DNS server.



Again go to DHCP server and select services – DHCP – service on - put Default Gateway  
- DNS IP address & maximum number of users than click save.



- 9) Now select HTTP server – Desktop – IP configuration – put DNS IP address in DNS server.

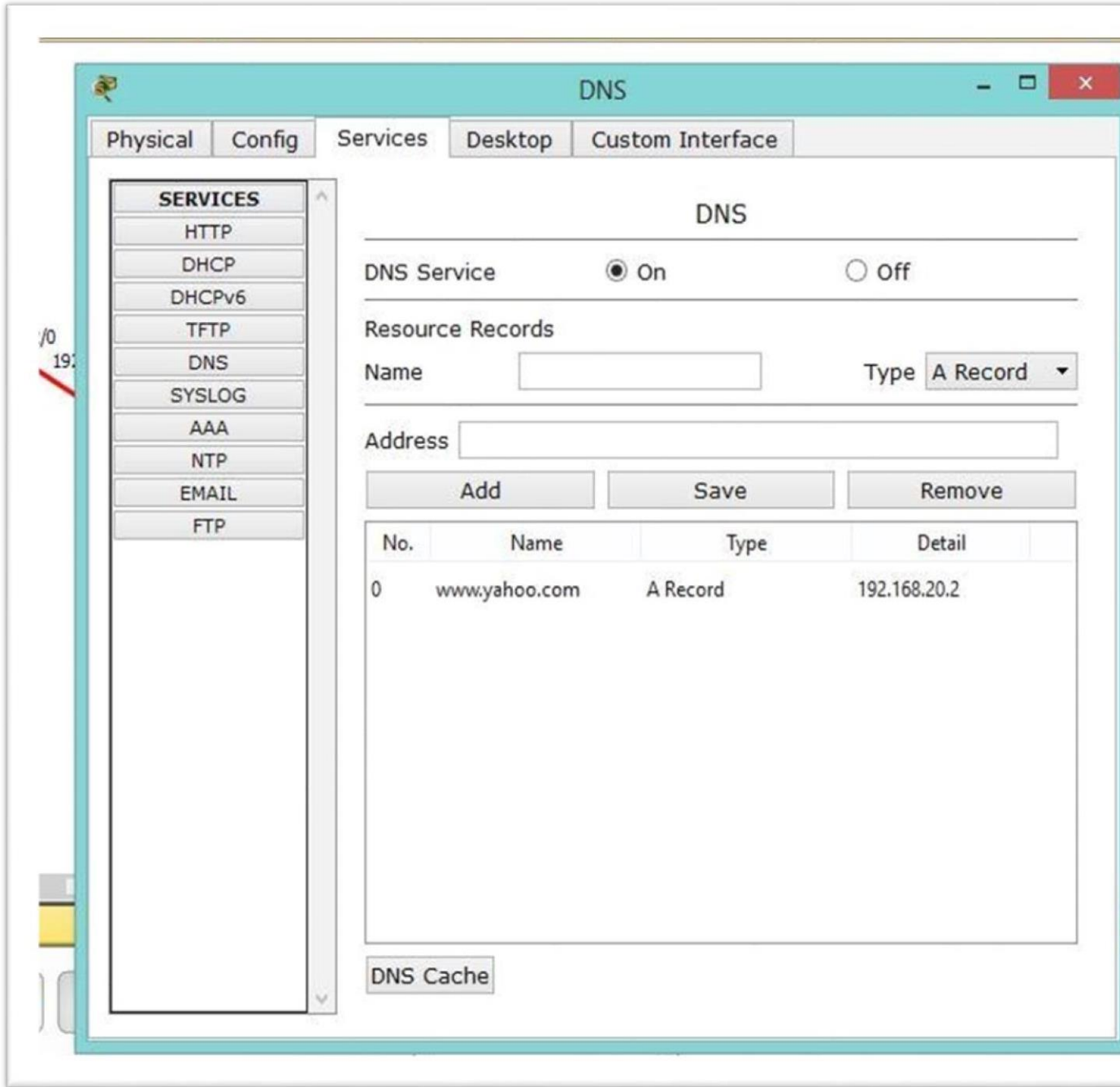


10) Select DNS server – services – DNS – DNS service on – name (put a web side name)

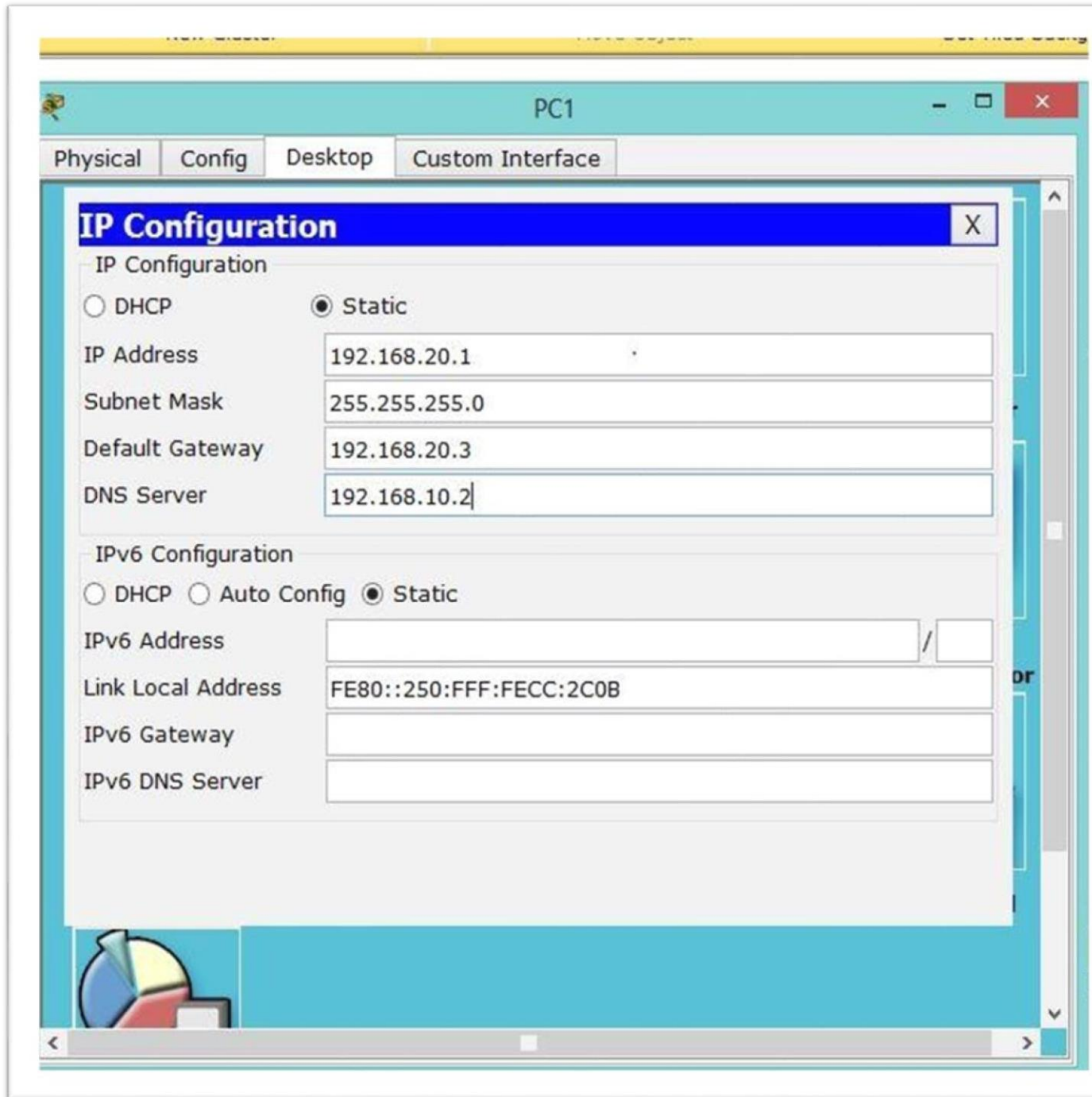
–

Address (put HTTP server IP address) – click add.

11) Now select PC – Desktop – IP configuration - put DNS IP address in DNS server.

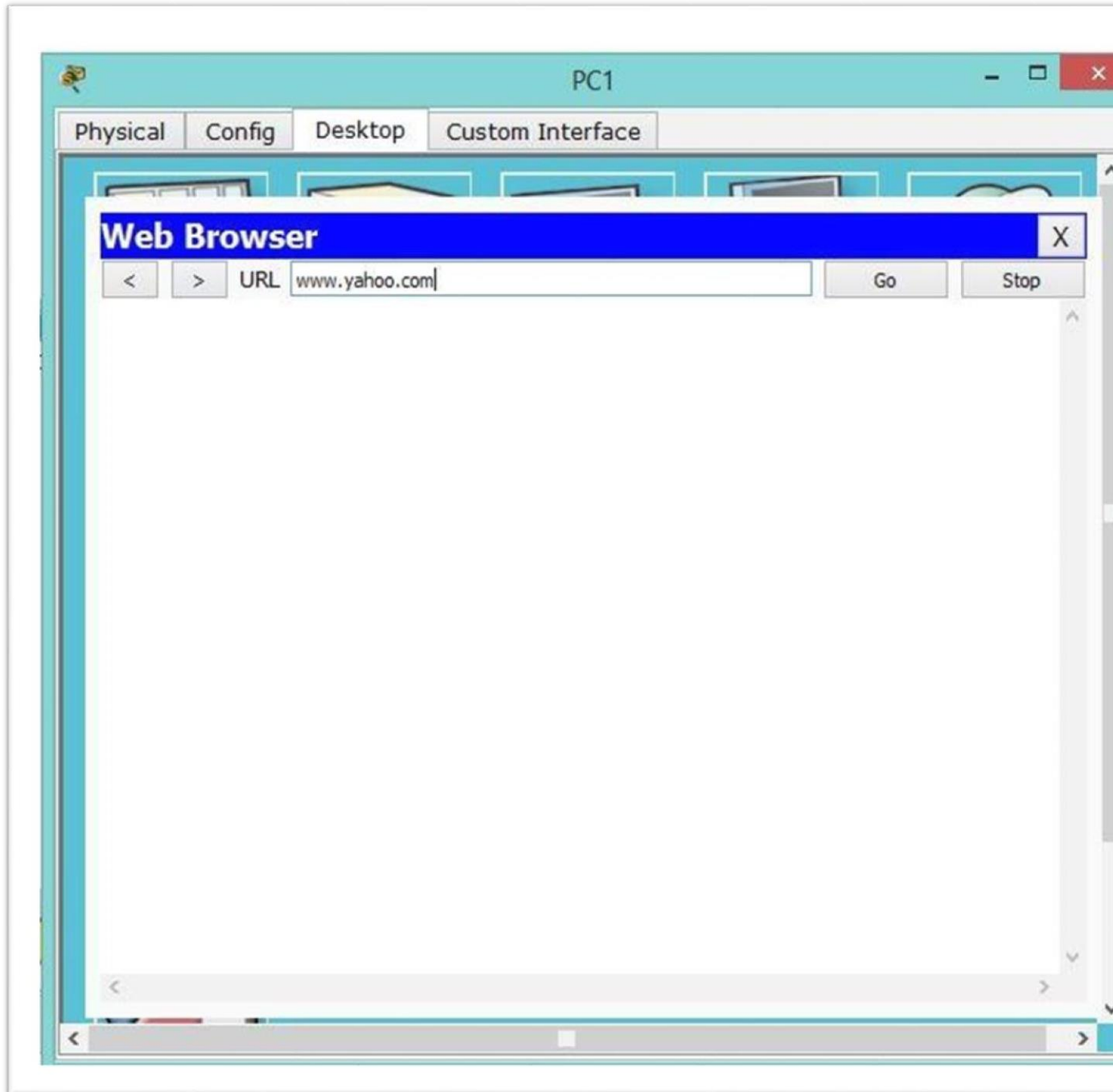


Now it is ready for search the address.



Select any PC – Desktop – Web Browser – put address.

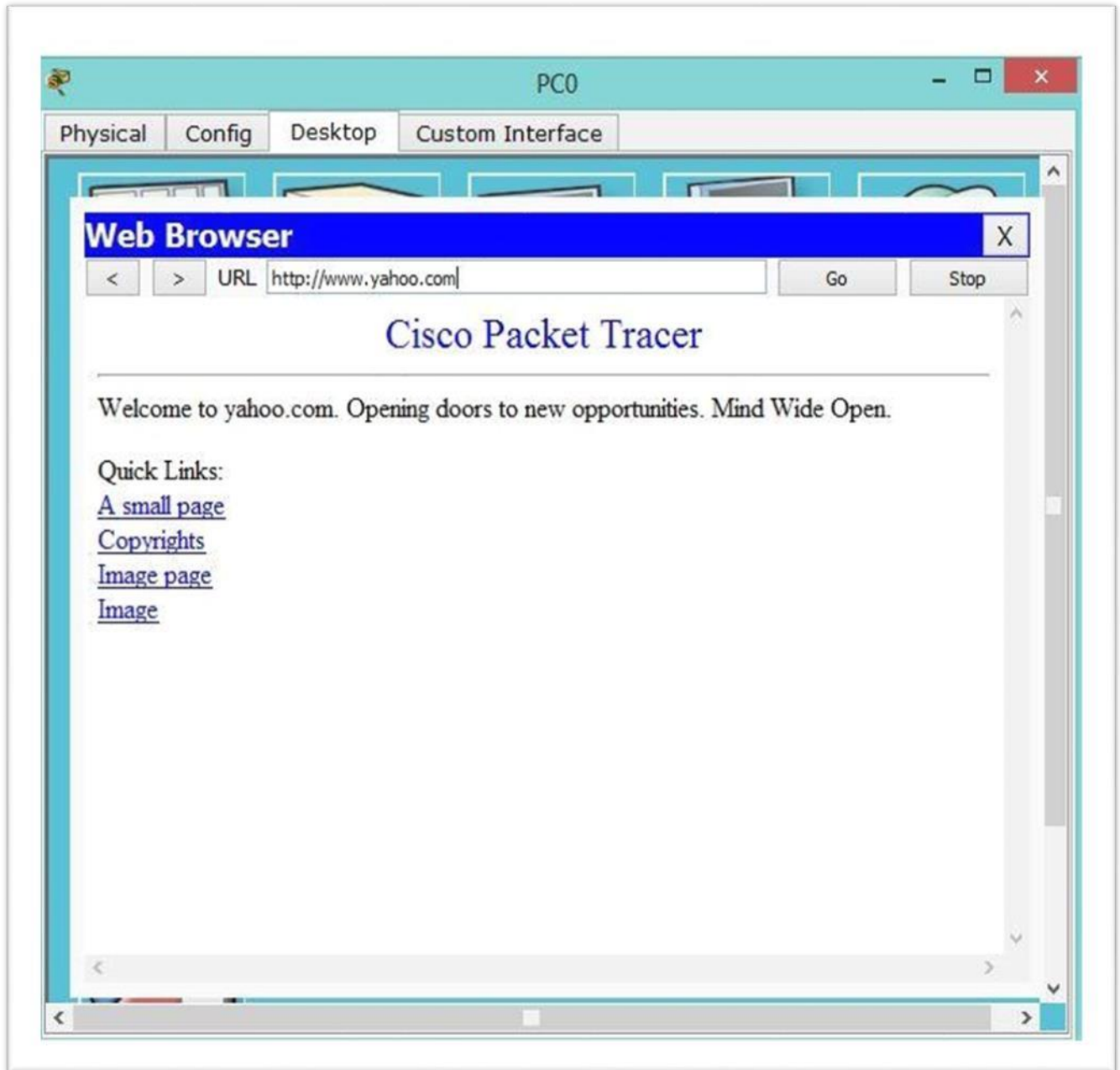
Result:



Then it is successfully find the address.

Then sent message it is received successfully.





ire	Last Status	Source	Destination	Type	Color	Time(sec)	Periodic	Num
	Successful	PC0	PC2	ICMP	Light Green	0.000	N	2
	Successful	DHCP	HTTP	ICMP	Purple	0.000	N	3
	Successful	DHCP	DNS	ICMP	Purple	0.000	N	4

## 3.3 Project Task and Activities

### 3.3.1 VLAN Configuration

Write the IP address and Subnet Mask for each PC and Router.

:

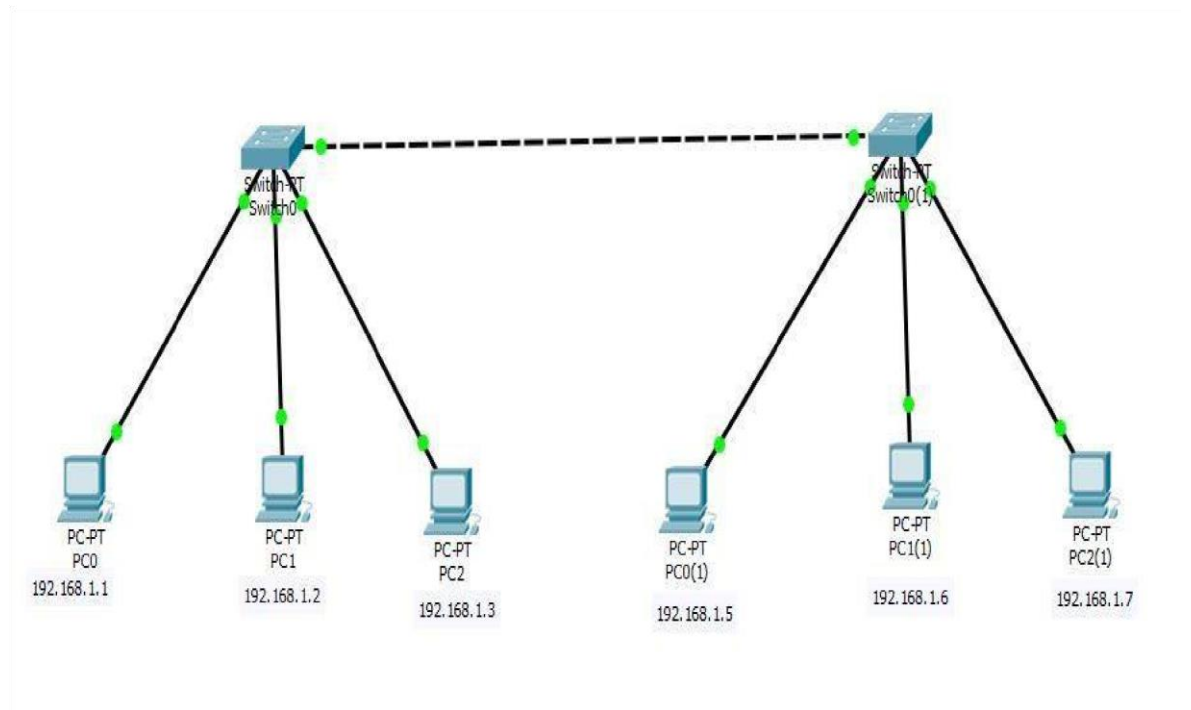
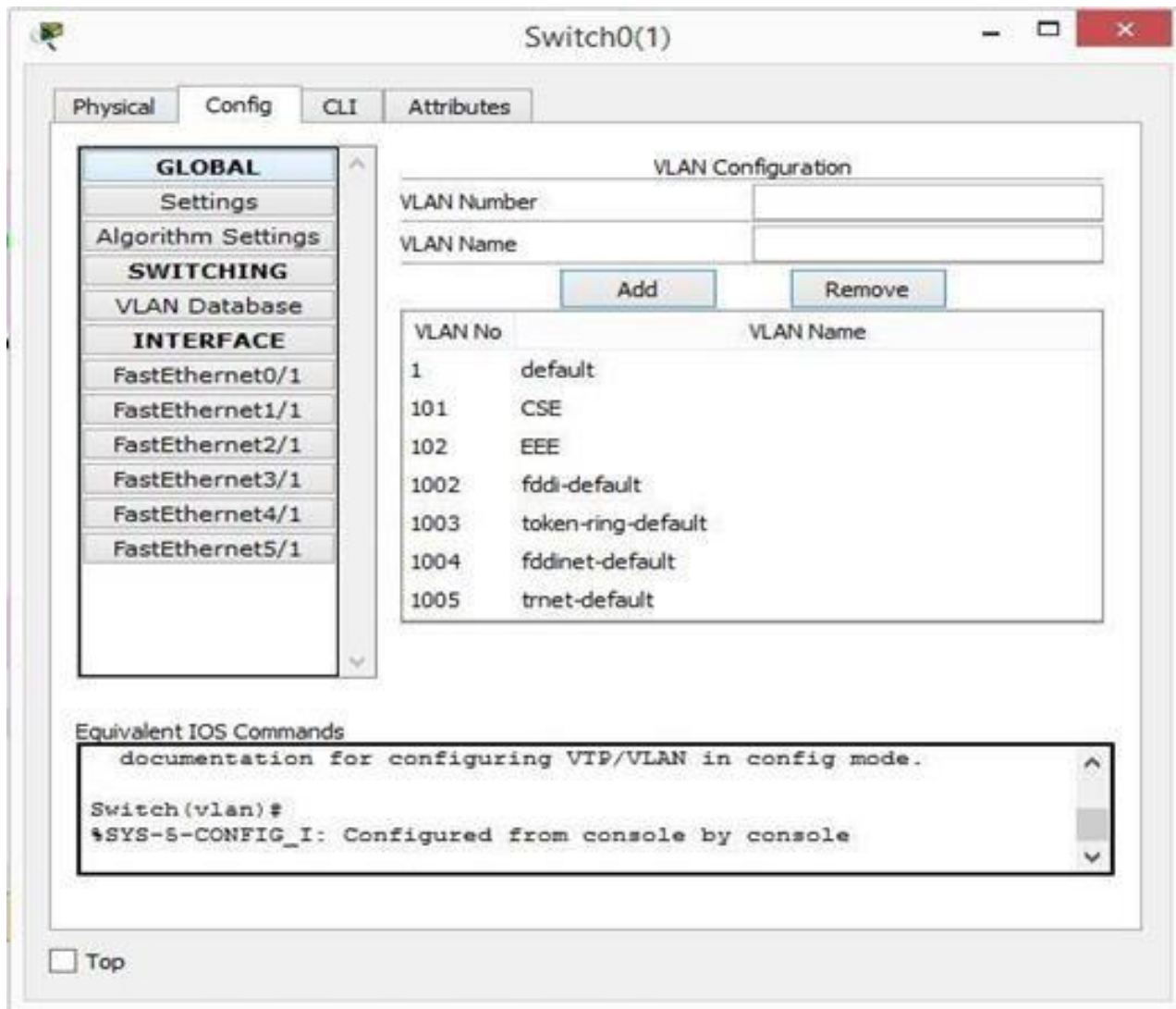


Fig:3.3.1 VLAN Configuring

Now set the IP address and Subnet Mask. Click the end device select the Configure tab than FastEthernet0 and show the IP configuration and set IP address and Subnet Mask.

Now select switch and Configure VLAN Database.

Select switch click VLAN database set VLAN number & name. I add two VLAN Number & Name.



Firstly, VLAN Number = 101

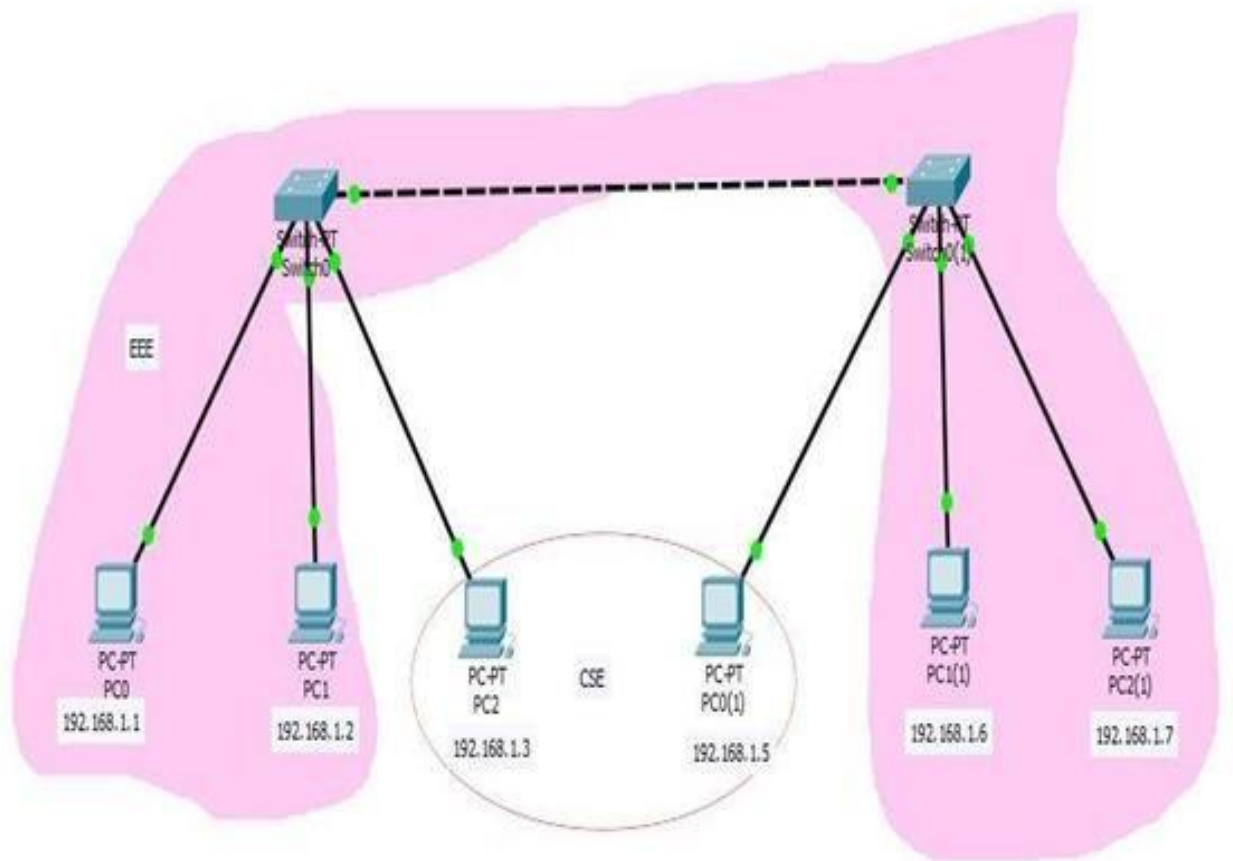
VLAN name =CSE

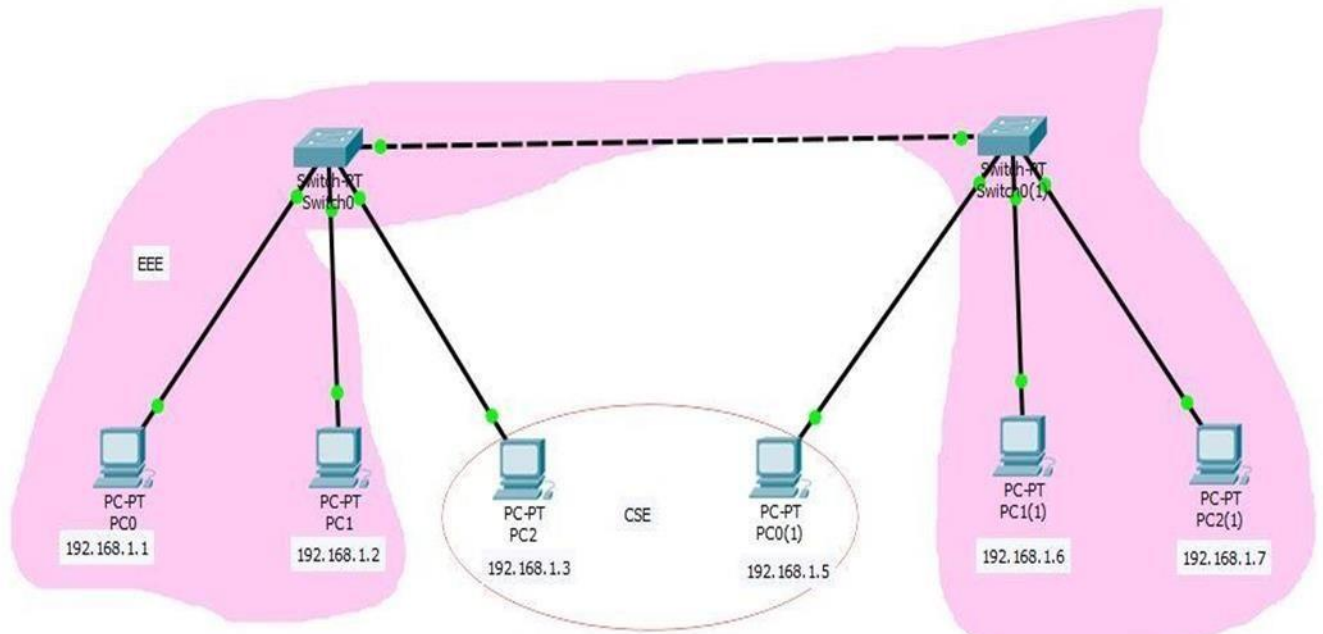
Secondly, VLAN number=102

VLAN name =EEE

Hear I set PC0,PC1,PC1(1),PC2(1) = 102, EEE & other PC2,PC0(1) set =101,CSE

Such as:





Result:

Now select

PC1(1) to PC1 = Successful (They are same LAN) PC0 to PC2(1) = Successful (They are same LAN) PC1 to PC2(1) = Successful (They are same LAN)

Realtime									
Fire	Last Status	Source	Destination	Type	Color	Time(sec)	Periodic	Num	Edit
	Successful	PC1(1)	PC1	ICMP	Red	0.000	N	0	(edit)
	Successful	PC0	PC2(1)	ICMP	Green	0.000	N	1	(edit)
	Successful	PC1	PC2(1)	ICMP	Blue	0.000	N	2	(edit)

PC2 to PC0(1) = Successful (Same LAN) PC2 to PC1 = Failed. (Different LAN) PC0(1) to PC1(1) = Failed. (Different LAN)

Realtime									
Fire	Last Status	Source	Destination	Type	Color	Time(sec)	Periodic	Num	Edit
	Successful	PC2	PC0(1)	ICMP	Red	0.000	N	0	(edit)
	Failed	PC2	PC1	ICMP	Green	0.000	N	1	(edit)
	Failed	PC0(1)	PC1(1)	ICMP	Blue	0.000	N	2	(edit)

### 3.3.2 GSM (Global System for Mobile Communications):

A digital mobile network of GSM (Global System for Mobile Communications) such as European mobile phone users and more will be used. , GSM and L-Division Little Access (CDMA). The digitization of GSM and the connection of the article, then two more data streams, the slotting during the test is sent to the bottom of a chatlet It operates in the 900 MHz (MHz) one or 1,800 MHz frequency band.

GSM, in conjunction with the Principal, High Level Circuit Switched Poster (HSCSD), General Packet Radio Service (GPRS), Enhanced Post GTM Environment (PRAN) and Universal Mobile Telemetrison Hospital

## Global system for mobile (GSM) network

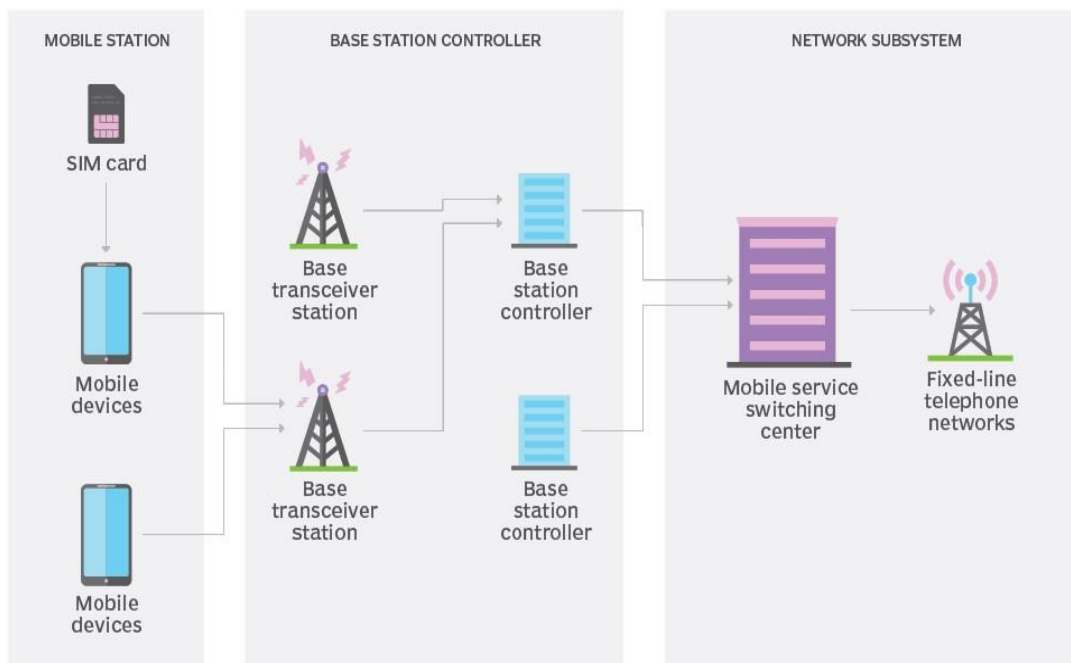


Fig:3.3.2 GSM Networking System

### 3.4 Challenges

In case of hosting detection issues, you need to take the correct configuration as your computer networking hardware will not be able to send data and messages without an address. Smaller networks usually do not have because they can be easily configured via the manual addressing large networks, but this is a serious problem. When you create and maintain large domain controller, DHCP- and address of the server and software protocols are required.

One of the most important issues in any computer network is security, which usually involves protecting the network from denying (Dosa) service attacks, preventing unauthorized users from infiltrating, and maintaining network integrity. These network problems increase in size according to all network sizes. Larger networks are able to attack because they are more vulnerable points, which intruders can gain access to.

A small network usually has several thousand IP addresses with unique host names and one particular device is likely to conflict with another so you should add multiple routes so you can bypass a busy network problem. Larger networks, configuration conflicts and busy networks need to be dealt with because they are not going through too much traffic network.

**About Wireless Router:** A Better Router is a device that contains information about a Rater Karbali edit and a Better Access Point Karbali. Provide access to the Internet or private computer network Trust the customers and models used, it should work in an instantaneous network, a wireless address LAN's, or a mixed within its kid network.

## **CHAPTER 4 Conclusion and Future Career & Scope**

### **4.1 Competencies Earned**

Network and system administrators design, build, maintain, and secure local area networks that work quickly in challenging and challenging areas of technology. They design and support server systems and related software, as well as end-user support for all LAN-based applications.

Network Administrator is the gateway to computer network maintenance and cannot be contacted. Solution Project features include: Installing and configuring computer networks and systems. Complete solution with guidelines and any computer networks and systems.provision of an inclusion in the policy and description.

### **4.2 Smart Plan**

Network and computer system administrators maintain this network for list-to-day operations. They install administration, and an organization's system including (LAN),support,(WAN), network part, Internet and other information communication organization. Every networking internship has an organization that does a good job of networking. If all organizations work well with smart planning, then they need to go out and move towards more brilliant arrangements. Smart plans are made using all experience and 8further forward skills.

### **4.3 Reflections**

Shares of Fareast Islamic Life Insurance Limited started meeting on May 29, 2000 and the next limitation was 2005. Listed with Dhaka and Chittagong Stock Exchanges. Work with and gain fame. They use the latest technology and get the service upgraded when it is not needed. This is an experimental technology provider in the Monitoring Network Solutions Department to provide for state road networks and experimental solutions with testing.



## **CHAPTER 5: CONCLUSION & FUTURE CAREER**

### **5.1 Discussion and Conclusion**

This internship review took place in a wonderful and fruitful position. I wake up and communicate with many of them through this internship that I have learned a key life-motivation that is the key subject and 8time experience. My internship is the location of the main course. I maintain an internship three days a week. Our daily time is four hours again. The name of my internship consultant is Multipurpose Technology Limited which is my special stage, the place that came to Multipurpose Technology Limited and is closed. They never. I inspect the hairstyles and use arrangements that house. I face contact for a YouTube address. In this internship I learned how to build CCNA's networking computer calories. It comes at a glance, and I hope it happened in other details.

### **5.2 Scope for Further Career**

Automation is becoming a networking base. Automation is now a part of automated configuration, deployment, maintenance, and troubleshooting. Everyday networking actions like this become networking opportunities. There is a myth that automation can take work away in the near future which is not true. Because there is a strong demand for network engineers and lack of qualified professionals, salaries, work outlook, and the opportunities are great. Taking on the role of network engineer can be an exciting and rewarding career choice. Networking will help develop and set skills, stay top of the latest trends in industry, keep the pulse in the job market, meet expected resource associates, and nurture client and profit access to develop your career.

## **References**

- [1] Learn Daffodil International University, available at <<<https://daffodilvarsity.edu.bd>>>, Access on 3 September' 2020 at 09:00pm.
- [2] Learn About Fareast Islami Life Insurance Company Limited, available at <[www.fareastislamilife.com](http://www.fareastislamilife.com)> Access on 3 September' 2020 at 9:00pm.
- [3] Learn about IP address, available at <[https://en.wikipedia.org/wiki/IP\\_address](https://en.wikipedia.org/wiki/IP_address)> Access on 5 September' 2020 at 11:00pm.
- [4] Learn about Critical Network Infrastructure, available at <<https://www.cisco.com/c/en/us/solutions/critical-infrastructure.html>> Access on 15 September' 2020 at 08:30pm.
- [5] Learn about Book, can be found at: Behrouz A Forouzan, 4<sup>th</sup> Edition, McGraw-Hill, Data Communications and Networking

## **APPENDICES**

## Appendix: Company Information



ফারইস্ট ইসলামী লাইফ ইন্স্যুরেন্স কোম্পানী লিমিটেড  
فاریست اسلامی لایف انشورنس کمپانی لیمیتڈ  
Fareast Islami Life Insurance Company Limited  
ইসলামী শরী'আহ মোতাবেক পরিচালিত

### Head Office

Name	Fareast Islami Life Insurance Company Limited
Address	Fareast Tower, 35 Topkhana Road, Dhaka – 1000
Telephone	09613000123, +88-02-9573077
E-mail	<a href="mailto:info@fareastislamilife.com">info@fareastislamilife.com</a>
Website	<a href="https://www.fareastislamilife.com">https://www.fareastislamilife.com</a>
Employees	304



## Report Checking 3: Jobayda Jui

### ORIGINALITY REPORT

<b>24%</b>	<b>18%</b>	<b>1%</b>	<b>18%</b>
SIMILARITY INDEX	INTERNET SOURCES	PUBLICATIONS	STUDENT PAPERS

### PRIMARY SOURCES

<b>1</b>	<b>Submitted to Daffodil International University</b> Student Paper	<b>9%</b>
<b>2</b>	<b>www.fareastislamilife.com</b> Internet Source	<b>2%</b>
<b>3</b>	<b>Submitted to University of Western Sydney</b> Student Paper	<b>2%</b>
<b>4</b>	<b>www.freeccnaworkbook.com</b> Internet Source	<b>2%</b>
<b>5</b>	<b>africasportnews.com</b> Internet Source	<b>2%</b>
<b>6</b>	<b>Submitted to Arab Open University</b> Student Paper	<b>2%</b>
<b>7</b>	<b>abiadonis.blogspot.com</b> Internet Source	<b>1%</b>
<b>8</b>	<b>www.microinsurancecentre.org</b> Internet Source	<b>1%</b>