

ANDROID APPLICATION “TSF BD”

BY

JONY JOYKHOSI TRIPURA

ID: 171-15-9407

This Report Presented in Partial Fulfillment of the Requirements for the
Degree of Bachelor of Science in Computer Science and Engineering

Supervised By

Ms. Subhenur Latif

Assistant Professor

Department of CSE

Daffodil International University

Co-Supervised By

Mr. Narayan Ranjan Chakraborty

Assistant Professor

Department of CSE

Daffodil International University



**DAFFODIL INTERNATIONAL UNIVERSITY DHAKA,
BANGLADESH**

DECEMBER 2020

APPROVAL

This Project titled **Android Application “TSF BD”**, submitted by Jony Joykhosi Tripura, ID: 171-15-9407 to the Department of Computer Science and Engineering, Daffodil International University, has been accepted as satisfactory for the partial fulfillment of the requirements for the degree of B.Sc. in Computer Science and Engineering and approved as to its style and contents. The presentation has been held on 28-Jan-2021.

BOARD OF EXAMINERS



Dr. Touhid Bhuiyan **Chairman Professor and Head**

Department of Computer Science and Engineering
Faculty of Science & Information Technology
Daffodil International University



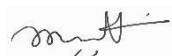
Abdus Sattar **Internal Examiner Assistant Professor**

Department of Computer Science and Engineering
Faculty of Science & Information Technology
Daffodil International University



Md. Jueal Mia **Internal Examiner Senior Lecturer**

Department of Computer Science and Engineering
Faculty of Science & Information Technology
Daffodil International University



Dr. Dewan Md. Farid **External Examiner Associate Professor**

Department of Computer Science and Engineering
United International University

DECLARATION

We hereby declare that, this project has been done by us under the supervision of **Ms. Subhenur Latif, Assistant Professor, Department of CSE** Daffodil International University. We also declare that neither this project nor any part of this project has been submitted elsewhere for award of any degree or diploma.

Supervised by:



Ms. Subhenur Latif Assistant Professor

Department of CSE

Daffodil International University

Co-Supervised by:



Mr. Narayan Ranjan Chakraborty Assistant Professor

Department of CSE

Daffodil International University

Submitted by:



Jony Joykhosi Tripura

ID: 171-15-9407

Department of CSE

Daffodil International University

ACKNOWLEDGEMENT

First, we express our heartiest thanks and gratefulness to almighty God for His divine blessing makes us possible to complete the final year project successfully.

We really grateful and wish our profound our indebtedness to **Ms. Subhenur Latif** and **Mr. Narayan Ranjan Chakraborty, Assistant Professor**, Department of CSE Daffodil International University, Dhaka. Deep Knowledge & keen interest of our supervisor in the field of “*Computer Science*” to carry out this project. His endless

patience, scholarly guidance, continual encouragement, constant and energetic supervision, constructive criticism, valuable advice, reading many inferior draft and correcting them at all stage have made it possible to complete this project.

We would like to express our heartiest gratitude to -----, and Head, Department of CSE, for his kind help to finish our project and also to other faculty member and the staff of CSE department of Daffodil International University.

We would like to thank our entire course mate in Daffodil International University, who took part in this discuss while completing the course work.

Finally, we must acknowledge with due respect the constant support and patients of our parents.

ABSTRACT

Our project title is **Android Application “TSF BD”**. It is an online base android application for Tripura Students’ Forum, Bangladesh. The uses of technology are growing day by day, we all are depending on technology and we used different technologies to perform simple tasks in our daily lives. But the Tripura community people still backward. We try to introduce the technologies by using this app. Here, any user can see the constitution, activities, committee members, branch categories, branches, photo gallery, video gallery of “Tripura Students’ Forum”. The Admin panel is a web base application. Here, admin can be able to create, update, delete the activities, branch categories, branches, committee members, video gallery, photo gallery of the TSF. Most of the Tripura community people does not know about the TSF, branch categories, branches, committee members, activities, TSF constitution. This app help to knowing about the TSF. Also, the Tripura community will be upgraded to a new level.

TABLE OF CONTENTS

CONTENTS	PAGES
BOARD OF EXAMINERS	ii
DECLARATION	iii
ACKNOWLEDGEMENTS	iv
ABSTRACT	v
CHAPTER	
CHAPTER-01: INTRODUCTION	11-13
1.1 Introduction	11
1.2 Motivation of this project	12
1.3 Objectives	12
1.4 Expected Outcome	12
1.5 Report Layout	13
CHAPTER-02: BACKGROUND	14-16
2.1 Preliminaries	14
2.2 Related Works	14
2.3 Comparative Studies	15
2.4 Scope of the problem	15
2.5 Challenges	16
CHAPTER-03: REQUEREMENT SPECIFICATION	17-26
3.1 Business Process Modeling	17
3.2 Requirement Collection and Analysis	18
3.2.1 Resources Used to Develop and Improve The System	18

3.2.2	Resources Used to Develop and Improve The System	18
3.3	Use Case Modeling and Description	19
3.4	Data Flow Diagram / Logical Data Model	22
3.5	ER-Diagram	24
3.6	Design Requirements	26
CHAPTER-04: DESIGN SPECIFICATION		27-37
4.1	Front-End Design	27
4.1.1	Front-End Design for Admin	27
4.1.2	Front-End Design for User	32
4.2	Back-End Design	36
4.3	Interaction Design and UX	36
4.4	Implementation Requirements	37
CHAPTER-05: Implementation and Testing		38-45
5.1	Implementation of Database	38
5.1.1	Database Design	39
5.1.2	Database Management System	39
5.1.3	MySQL	39
5.1.4	Retrofit	39
5.1.5	Picasso	40
5.1.6	YouTube API Player	40
5.2	Implementation and Interaction	41
5.3	Testing Implementation	42

5.4	Test Result and Reports	45
CHAPTER-06: Impact On Society, Environment		46
6.1	Impact on Society	46
6.2	Ethical Aspects	46
6.3	Sustainability Plan	46
CHAPTER-07: Conclusion and Future Scope		47
7.1	Discussion and Conclusion	47
7.2	Scope for Further Developments	47
APPENDIX		48
8.1	Appendix: Project Reflection	48
REFERENCES		49

LIST OF FIGURES

Fig 3.1:	Business Process Model	17
Fig 3.3.1:	Use Case for Admin	20
Fig 3.3.2:	Use Case for User	21
Fig 3.4.1:	Data Flow Diagram for Admin	22
Fig 3.4.2:	Data Flow Diagram for User	23
Fig 3.5:	ER Diagram	25
Fig 4.1.1:	Front-End Design for Admin	27
Fig 4.1.2:	Front-End Design for User	32
Fig 4.2.1:	All Tables of Database	39

LIST OF TABLES

TABLES	PAGE NO
Table 2.1: Comparison between related Works.	15
Table 5.3: Test Case Table for Android Application ‘TSF BD’.	40

CHAPTER-01

INTRODUCTION

1.1 Introduction

Tripura Students' Forum, Bangladesh known as TSF BD. It is a social organization for Tripura Students or Tripura Community People. In modern era, technology is growing day by day. We all are depending on different technology in our daily life. The Tripura community people are still backward. The Tripura community people are needed to upgrade with technology.

We use information base and data set innovation are majorly affecting the developing utilization of PCs. The Admin panel is execution of the system was finished utilizing PHP, JavaScript and MySQL Server Database innovations, permitting system to be run in web Server and the user panel is execution of the system XML, Java, API, and Some Build-In Library.

Basically, Android Application 'TSF BD' dealt with Tripura community. TSF organization can spread their all activities here. Tripura community can easily know all about TSF activities by using these applications.

1.2 Motivation of this project

Most of the Tripura Community People are does not know TSF branch categories, branches, TSF constitution, committee member, activities, etc. There is a big communication gap between TSF and Tripura Community People.

This system will always help us to reduce the distance between TSF and Tripura Community People to connectivity between TSF and Tripura Community People all times.

1.3 Objectives

The key objects of the project are as follows:

- Connecting all Tripura Community People here.
- Tripura Community People can know more details about TSF organization.
- Establishing relationships between TSF and Tripura Community.

1.4 Expected Outcome

1. Here, a new committee member can be added to the organization.
2. The Tripura people who are not even in the same place can be added here.
3. Can enjoy all the features such as branch categories, branches, video gallery, photo gallery, committee member, activities communicating with others, etc.

1.5 Report Layout

In this Chapter 1: We discussed basic concept of Android Application ‘TSF BD’. We covered introduction, motivation, objective, expected outcome and project

management. In Chapter 2: We will discuss background of Android Application 'TSF BD'. We will try to cover Preliminaries, Related work, Challenge, Problem etc.

In Chapter 3: We will discuss "Requirement specification for Android Application 'TSF BD'".

In Chapter 4: We will discuss 'Design Specification' for Android Application 'TSF BD'.

In Chapter 5: We will discuss 'Implementation and Testing' for Android Application 'TSF BD'.

In Chapter 6: We will discuss about Impact on society, Environment and Sustainability.

In final Chapter 7: We will discuss about conclusion and our future scope, limitation. Improvement and conclusion of our project.

BACKGROUND

2.1 Preliminaries

We're living in Advanced Bangladesh right now. Bangladesh is an advanced nation through its association with the rest of the world. The most of currently use Android phones in Bangladesh, and a lot of people use the internet. Individuals are, for any undertaking, usually subject to the Internet. People feel amazing doing something on their computer/phone. Android applications are extremely mainstream at present. Individuals need a clear method for every application to be used.

2.2 Related Works

There are many kinds of tribal organization available online. Like- Bangladesh Marma Students' Council (BMSC). However, our application is focused on building up communication between TSF and Tripura Community People. In our country, many tribal organizations did not have online management system. There is only a focus on activities, communication, etc. We have facilitated the management of organization activities and placed special emphasis on communication.

Some related working sites are discussed below:

2.2.1 BMSCBD

BMSC BD is a social organization for Marma Community People. The Students' Council of Marma was founded in 1989 on 24 October. At that moment, among the 2nd largest race in Chittagong hill tracts, a social movement begins [3].

Advantages:

bmscbd.org is a BMSC blog site. They update their all activities, news, BMSC constitution, etc.

bmscbd.org even incorporates a portable application which can deal with all tablets and cell phones for helpful in a hurry use.

Disadvantages:

Marma Community People do not get update BMSC BD committee members, branches, year, etc.

Features	Android Application 'TSF BD'	BMSC BD
Support Large System	√	√
Support Mobile working	√	√
Cover Everything	√	X
Free Version	√	√

Table2.1: Comparison between related Works.

As shown in (Table 2.1), the TSF app will be cover everything and it will uphold portable working by utilizing bootstrap system, constraint layout that make the site and application responsive with all gadgets that will assist the clients with getting to the site from anyplace and whenever, and it will have a free form to attempt all highlights that the others organization are given.

2.3 Comparative Studies

The system key is not in any other application, so our system is completely unique. Other site/application have worked on activities but not on communication build up. We have been working here on all activities as well as communication between TSF and Tripura Community People.

2.4 Scope of the Problem

We have faced a lot of problems while working on what to do with the Android Application 'TSF BD'. We visit and get ideas on how the TSF organization manage their committee, activities, etc. Decide which activities we will keep and

which are more important. We've had a lot of bugs when we started developing the system, and we've had a lot of trouble solving them.

2.5 Challenges

We have experienced numerous issues while finishing the venture. We attempt our best to defeat from those issues. So initially we figure what we can include this undertaking. For this venture we need to figure out how to make highlights and utilize that in our undertaking. So, we took up the challenge of creating an TSF BD app with this idea.

REQUEREMENT SPECIFICATION

3.1 Business Process Modeling

This project contains the model for Android Application “TSF BD” This model help to understand whole project work. The entire work process of framework is speaking to by business process model (BPM). The principle normal for the procedure is speaking to "flow diagram". A business process model is graphically documentation to the capacity of understanding their inside business system. The graphical documentation will guarantee the business technique coordinated efforts between various associations. BPM are speaking to entire method of business right away, that are effective of business satchels.

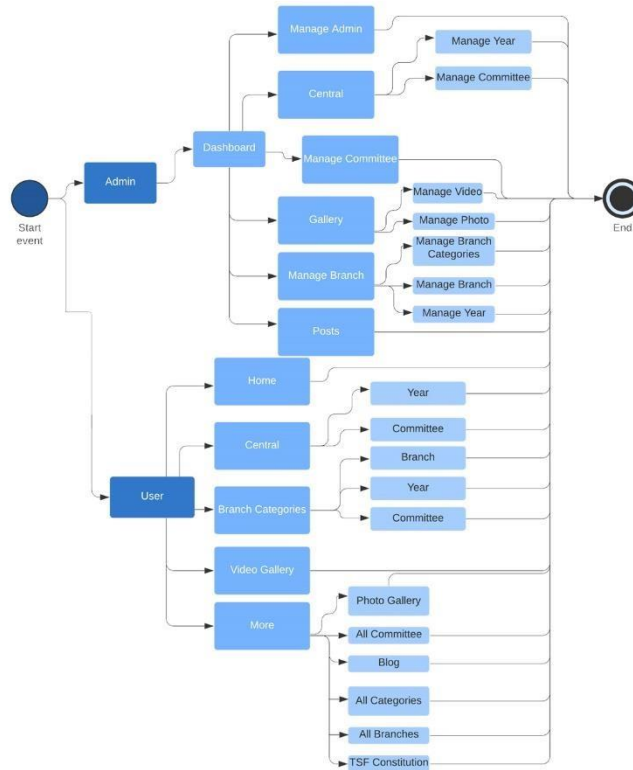


Fig 3.1: Business Process Model

3.2 Requirement Collection and Analysis

This project has many sorts of requirement. Distinguishing the best requirement is significant. As indicated by TSF request there are numerous sorts of requirement. We have gathered TSF requirement and we additionally assemble

of data from TSF committee member. We deal with our project dependent on this requirement and data.

Just the creation would be adequate to give a superior exhibition.

3.2.1 Resources Used to Develop and Improve the System

It is critical to distinguish the requirements required for the project and to structure the modules so that all the requests are met. Some planning advances are fundamental need. A few stages require a careful examination of the fundamental needs. It will expect for the fulfillment of the organization and the issues will be experienced. At exactly that point the creation would be adequate to give a superior exhibition.

3.2.2 Resources Used to Develop and Improve the System

For create or improve any sort of project at that point it ought to be work part by part. One section improve then should take improve or build up another part. In the wake of doing this gathered the asset are the most significant part. For making this project we should require XAMPP, MySQL, Bracket, Android Studio, Some Build-In Library, a windows pc and internet browser. We are making Android Application 'TSF BD' that is uses Tripura Students' Forum, Tripura community people which can utilize mobile device and internet.

3.3 Use Case Modeling and Description

A used case diagram is additionally called bound together displaying language that are speak to framework activity in graphically. Each action is show in this sort diagram we can get information the entire action of entertainer. A utilization case shows and plan the rundown of activity. Being used case diagram

entertainers are assume the primary part of various activities and a utilization case diagram has numerous sorts of entertainer each entertainer is play various activities. Situations of utilization or framework interfaces with individuals, establishment or association.

A utilization case diagram didn't clarify entire technique unmistakably however you accomplish tremendous information for this sort of diagram. It plainly proposal the entire cycle of your entertainer action. Presently we show the all utilization case diagram of our application. The use case model of this project is show in the follow:

3.3.1 Admin

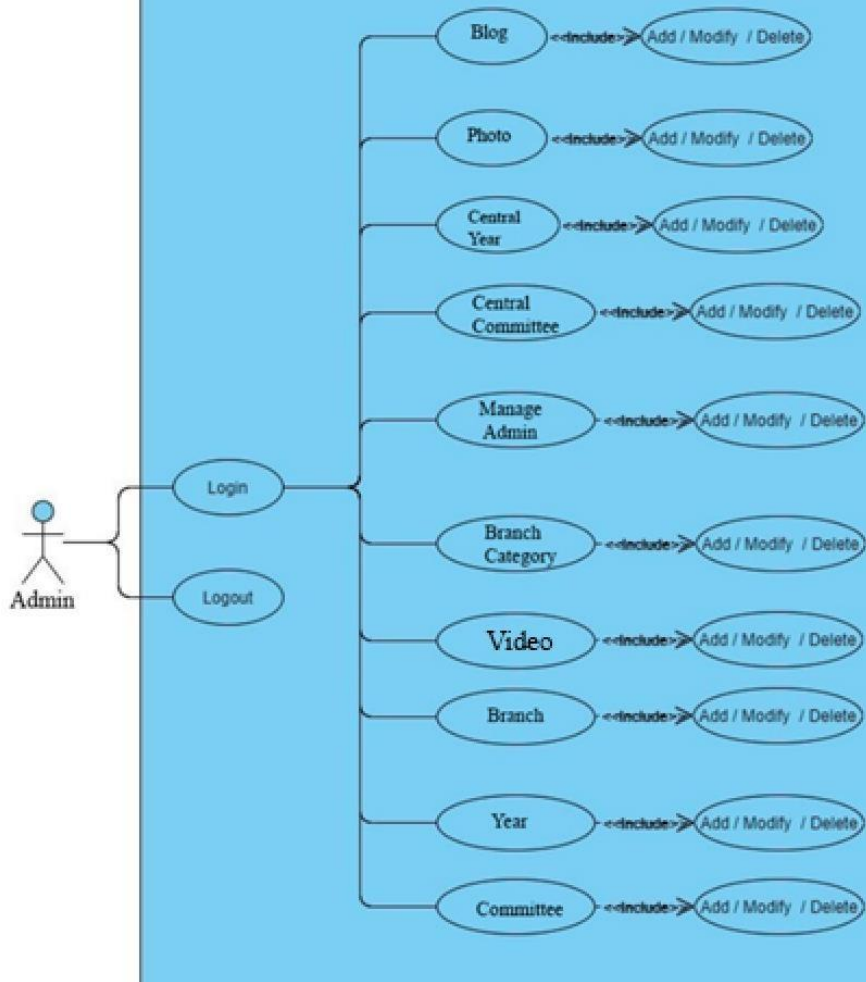


Fig 3.3.1: Use Case for Admin

3.3.2 User

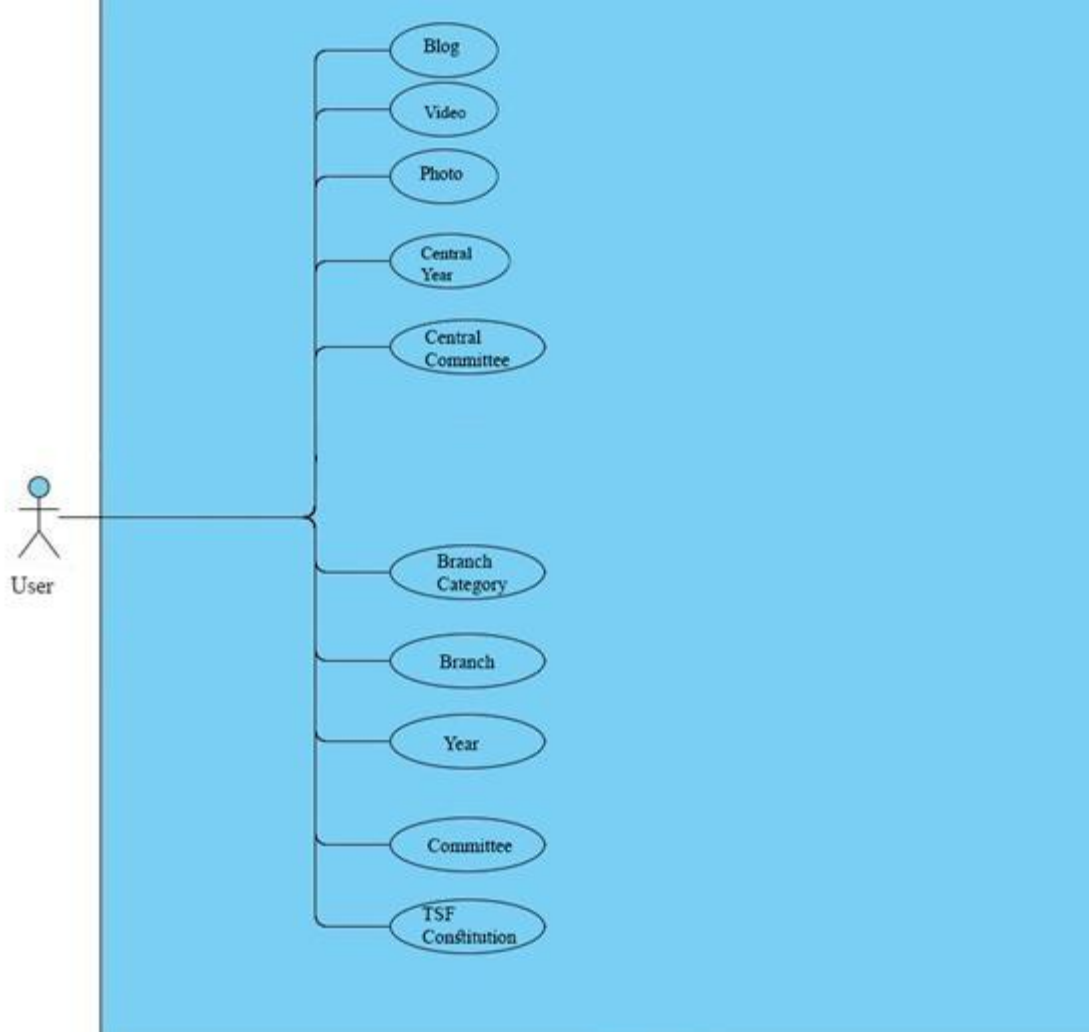


Fig 3.3.1: Use Case for User

3.4 Data Flow Diagram / Logical Data Model

In this diagram user uses this app which has some user-friendly features. In this app all information store in database.

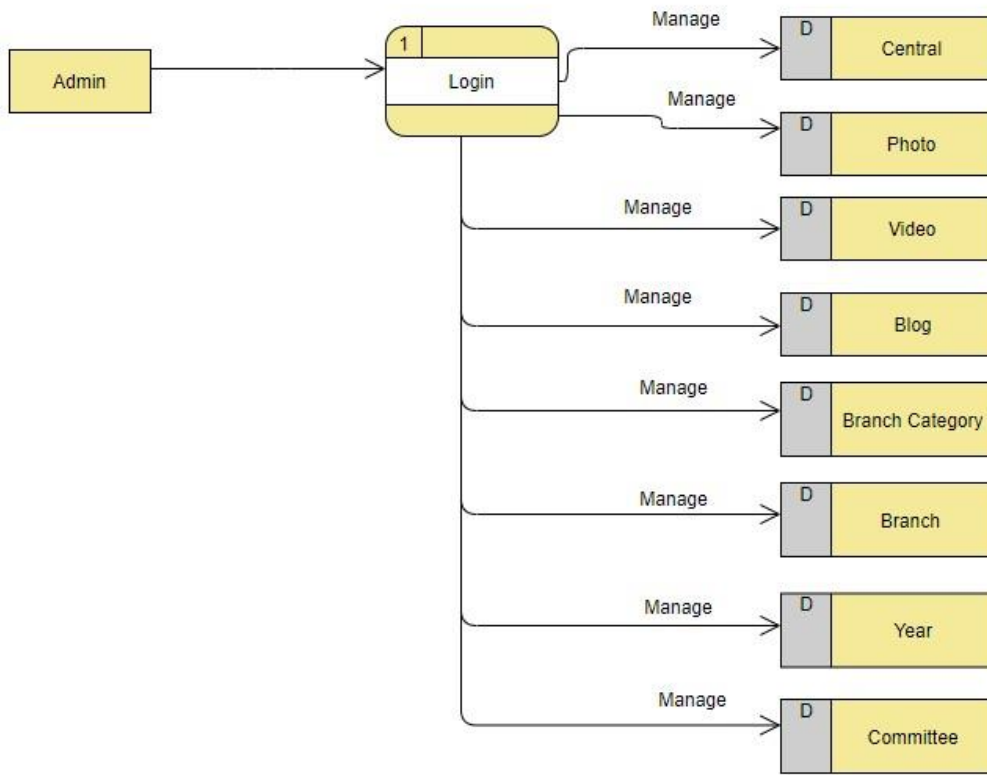


Fig 3.4: Data Flow Diagram for Admin

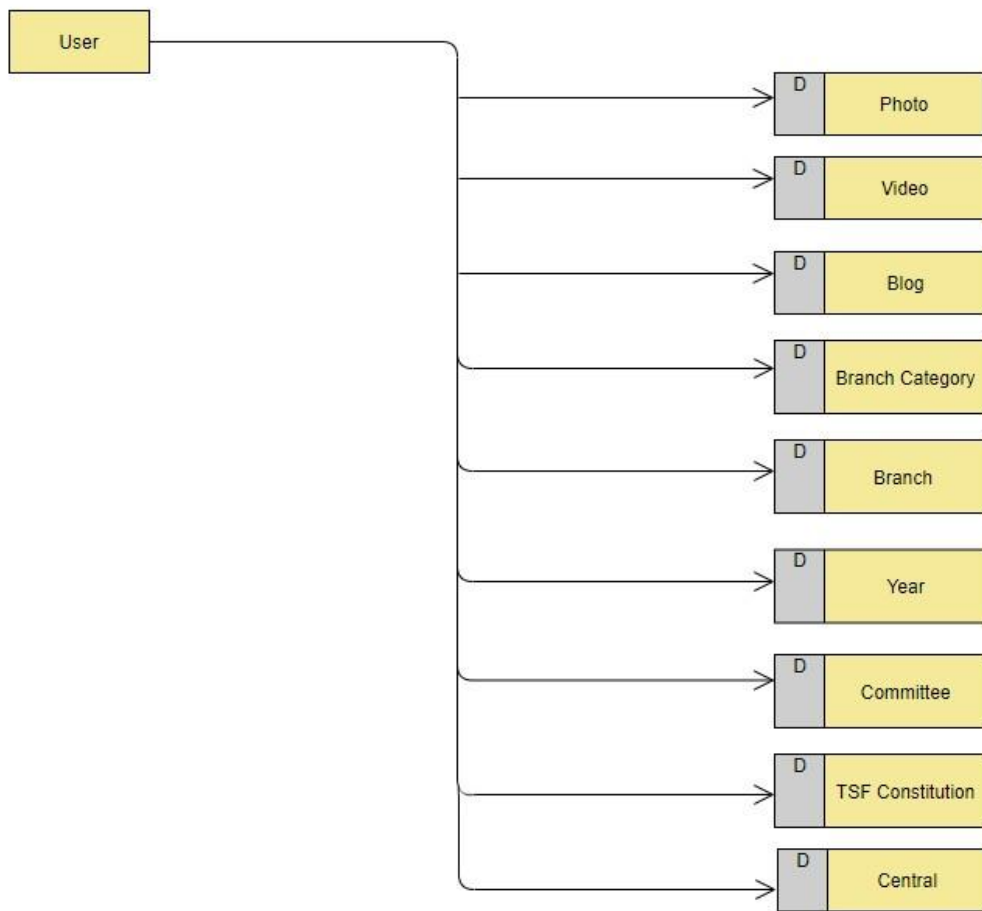


Fig 3.4.2: Data Flow Diagram for User

3.5 ER-Diagram

An Entity Relationship diagram is the piece of flowchart that are extensively portrays how to associate each other like as individuals and article. An Entity Relationship diagrams are greatest bit to use to draw a relationship diagram in programming designing, PC building, business, training proposition and exploration field. This field are anything but difficult to depict utilizing ER diagram. Individuals and understudy can without much of a stretch see entire framework in a couple of times. And furthermore, known as ER or ERDs models utilized they can make a lot of images, for example, precious stone, ovals, square shape, associating lines together [5].

Data structure diagram (DSDs) are identified with Entity Relationship. Emergency room diagram are stream the plan of entire diagram of framework. Presently we can see this cycle, how to portray entire framework in ER diagram in our venture. Given beneath is the ER diagram utilized in our Project.

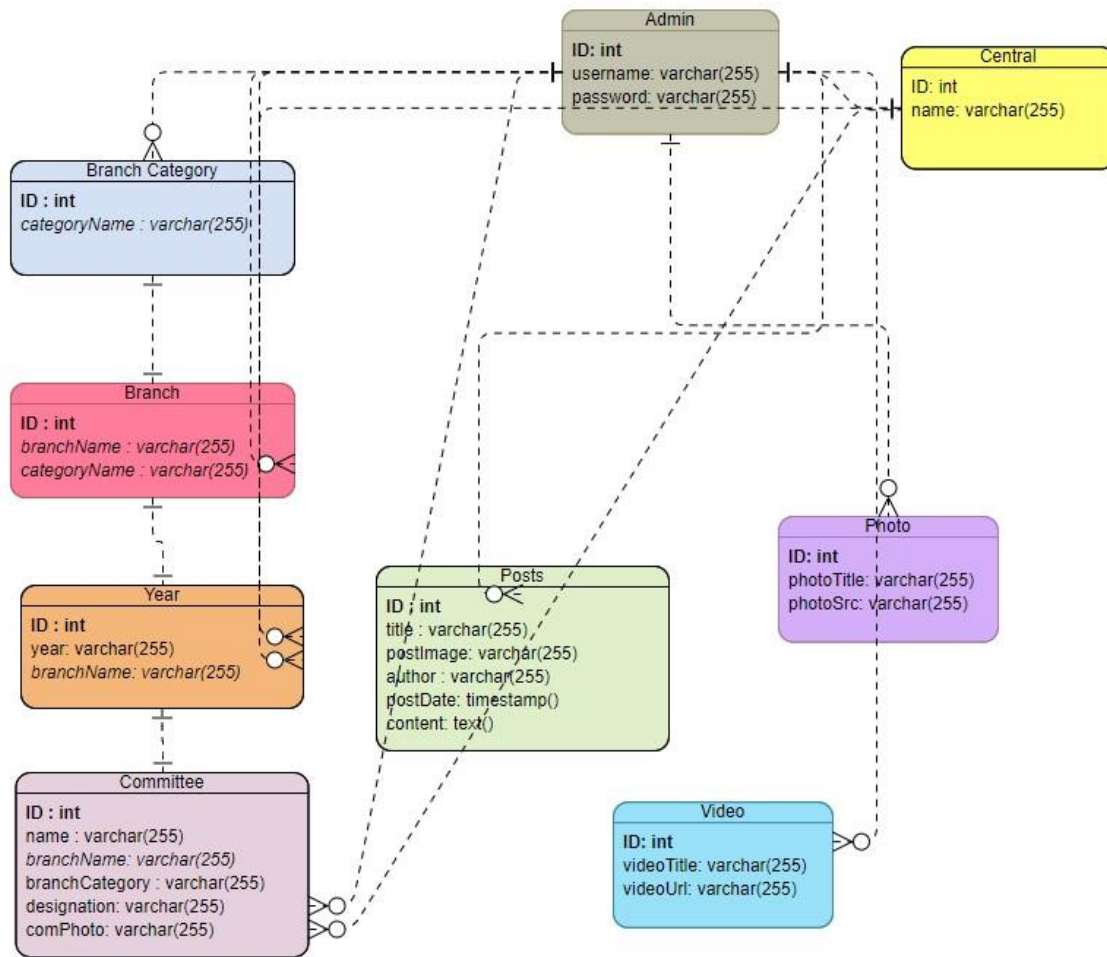


Fig 3.5: ER Diagram

3.6 Design Requirements

Design requirement for user:

- Admin Panel
- User Panel

DESIGN SPECIFICATION

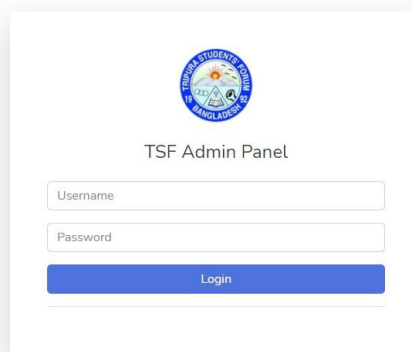
This chapter we will discuss all about front-end-design and back-end-design and interaction design and implementation requirement. Create the entire thing we use two different languages. For admin panel- we use HTML, CSS, and JavaScript for frontend-design and PHP, for backend design. For user panel – XML for front-end-design, Java for backend design and use Retrofit library to fetch API/JSON data.

4.1 Front-End Design

Front-end part is the important part in any application which is visible to the user. When user connect back-end and also connect database then need front-end. We will part by part discuss initial front-end design.

4.1.1 Front-End Design for Admin

Admin will be able to control total management system. They can easily insert, update, delete the photo gallery, blog, committee, video gallery, year, etc.



The image shows a login form for the 'TSF Admin Panel'. At the top center is a circular logo with the text 'TAKHES STUDENTS FORUM' and 'BANGLADESH' around a central emblem. Below the logo, the text 'TSF Admin Panel' is displayed. The form consists of two input fields: 'Username' and 'Password', both with placeholder text. Below these fields is a blue 'Login' button.

Fig 4.1.1A: Admin Login

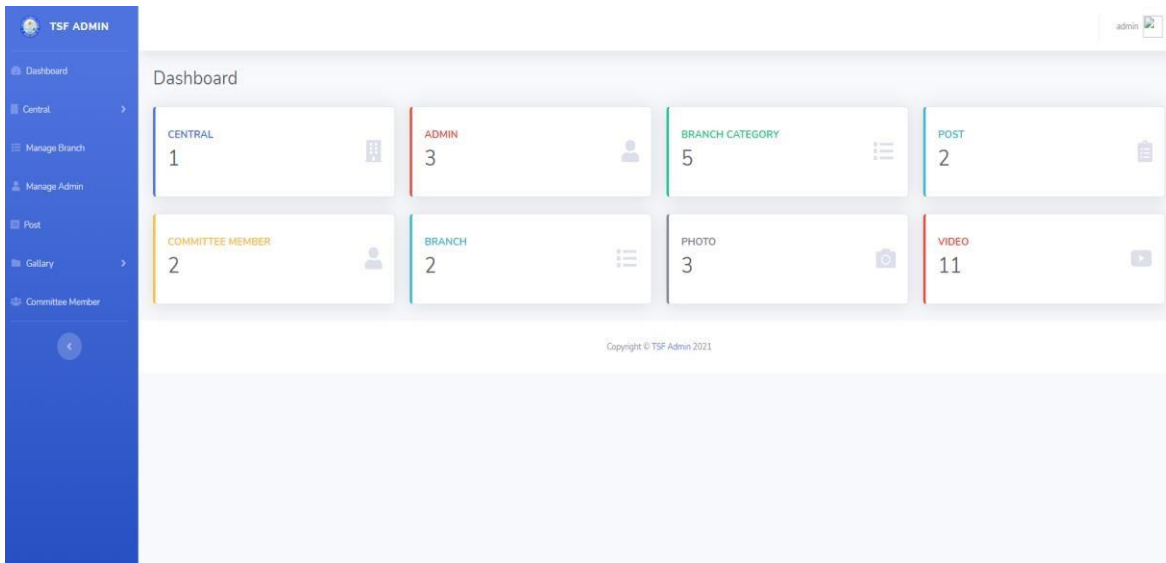


Fig 4.1.1B: Admin Dashboard

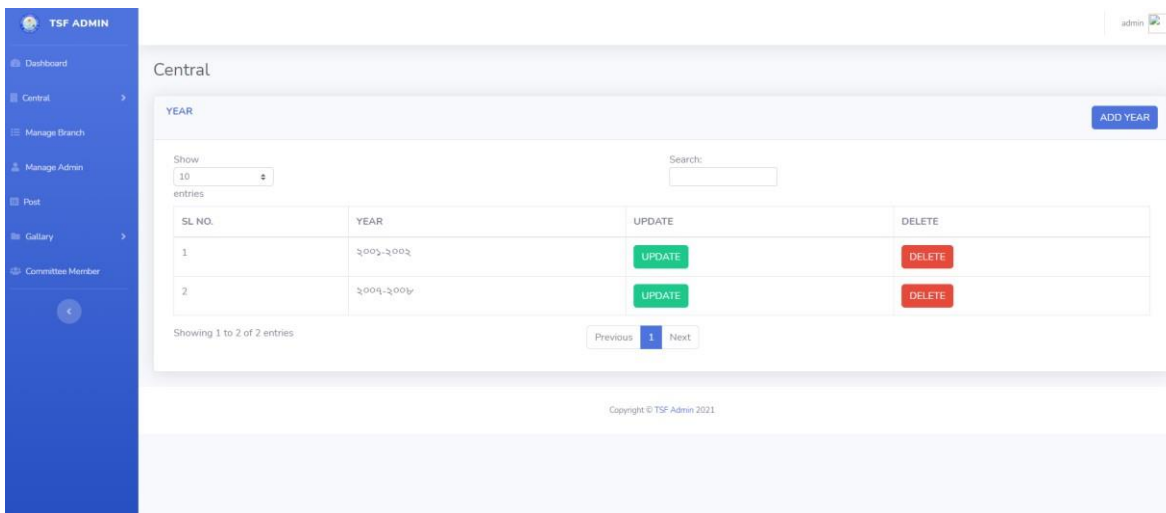


Fig 4.1.1C: Central Year

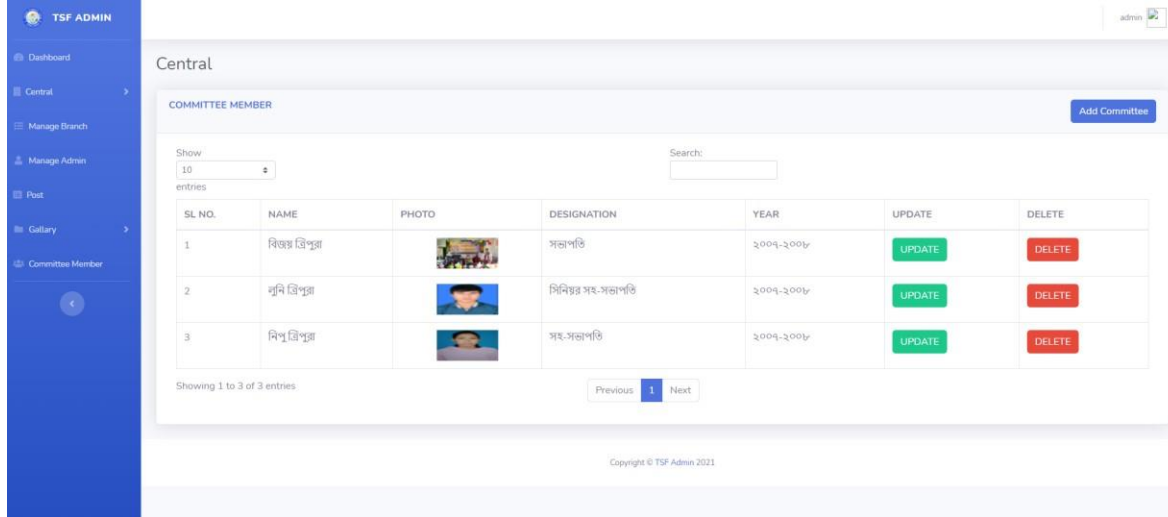


Fig 4.1.1D: Central Committee List

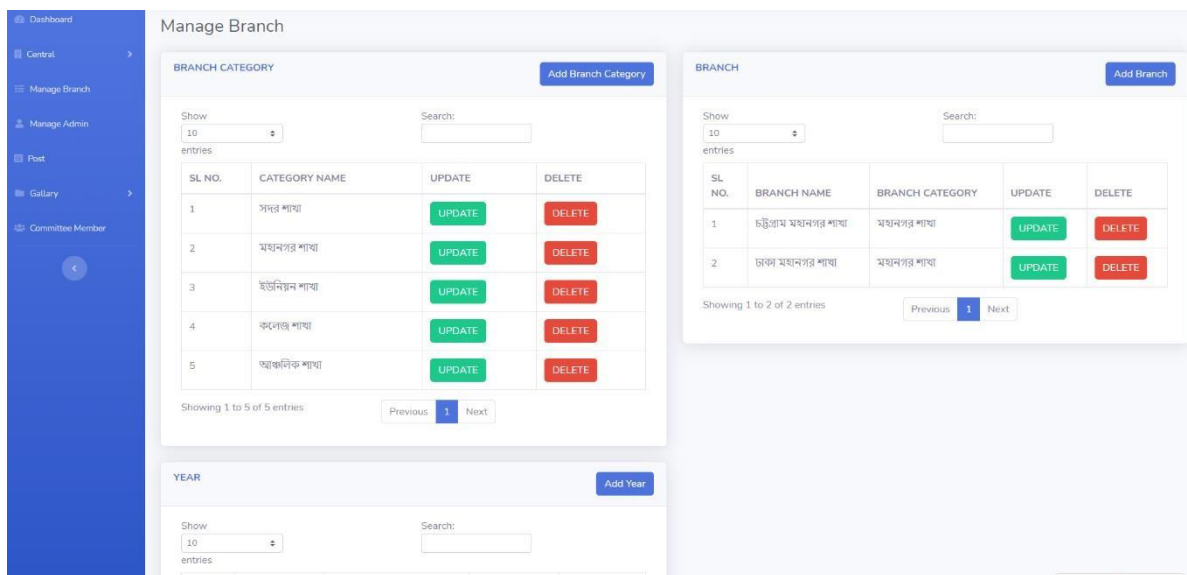


Fig 4.1.1E: Manage Branch

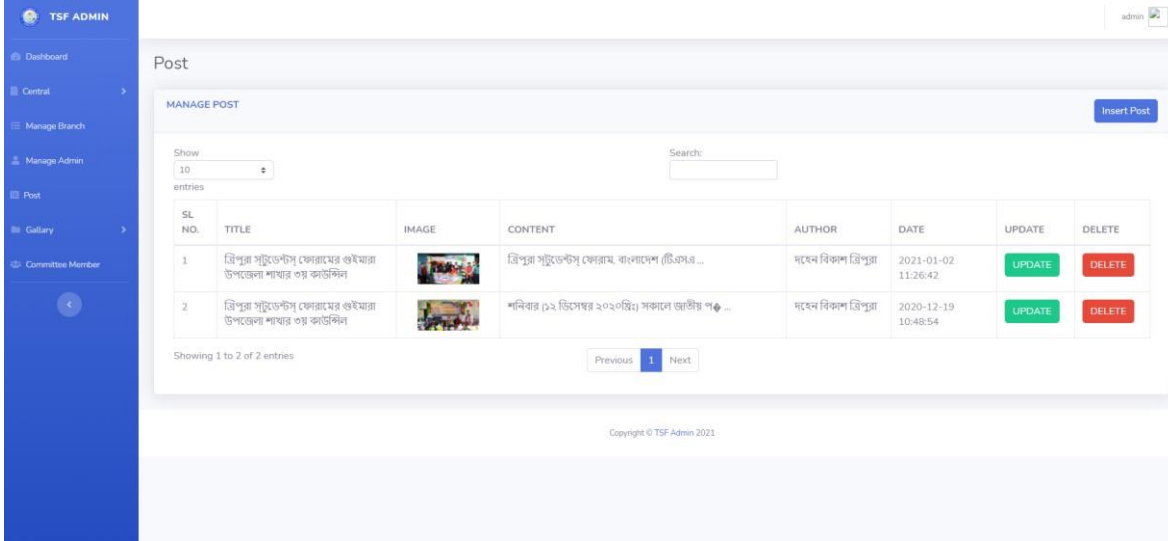


Fig 4.1.1F: Manage Post

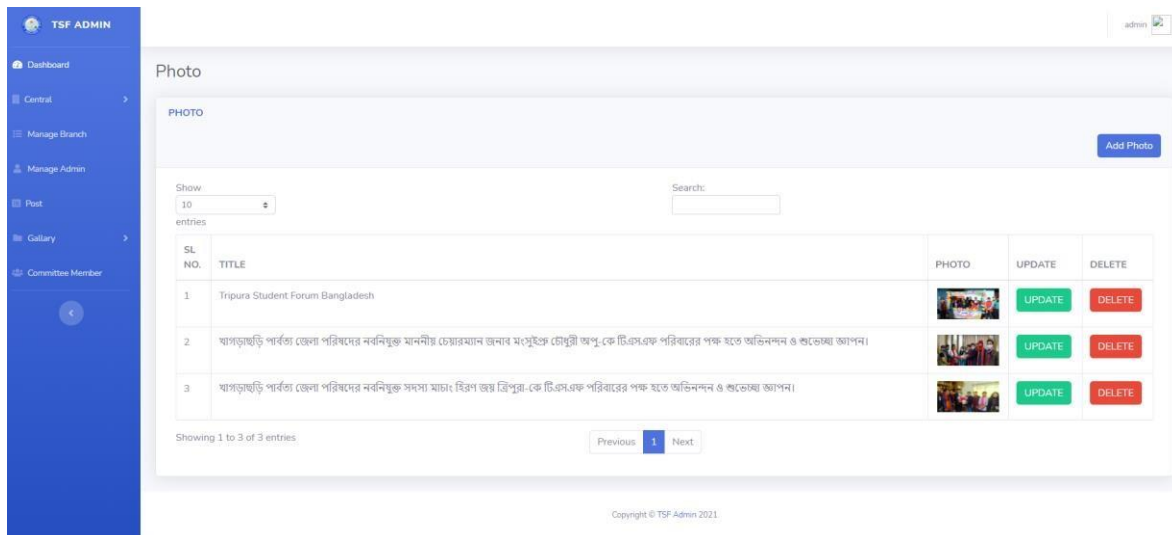


Fig 4.1.1G: Photo

TSF ADMIN admin

Dashboard
Central
Manage Branch
Manage Admin
Post
Gallery
Committee Member

Gallery

[Add Video](#)

Show: entries

Search:

SL NO.	VIDEO TITLE	VIDEO THUMBNAIL	VIDEO URL	UPDATE	DELETE
1	Tal ni ha New Kokborok Official music video 1080p full HD 2020		55NiL4Vx0t4	UPDATE	DELETE
2	Assamese Dance Cover Tripuri & Bodo Performance by_Hana & Manorama.. FHD 2020		NI GyCthIAV6	UPDATE	DELETE
3	Bwkhani Maya U Official Kokborok Music Video Song II 2020..Hiresh & Nadusa		bmIzbndv6LY	UPDATE	DELETE
4	NAIDEI NAIDEI KO New Kau Bru Official Music Video_2020 Manorama & Khagen		LQ3P4wrveew	UPDATE	DELETE
5	Mwnalti Official Kokborok Music Video Song II 2020.Joy Tripura & Apsora Tripura		DIM6HtNLIE	UPDATE	DELETE
6	O Ani Sathiya Kokborok official Romantic music video 2020		WWQe_0LOAE8	UPDATE	DELETE
7	Hamjama Koroi Khe Sobaj Joyosri Roy Tripura New Kokborok Music Video Song 2019		RA1A19M_n4	UPDATE	DELETE

Fig 4.1.1H: Video

4.1.2 Front-End Design for User

The user will be able know all about TSF organization without login.



বিজ্ঞপ্তি

পুরা স্টুডেন্টস ফোরামের গুইমারা উপজেলা ✕

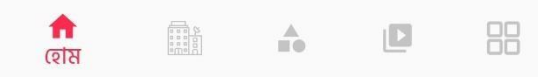
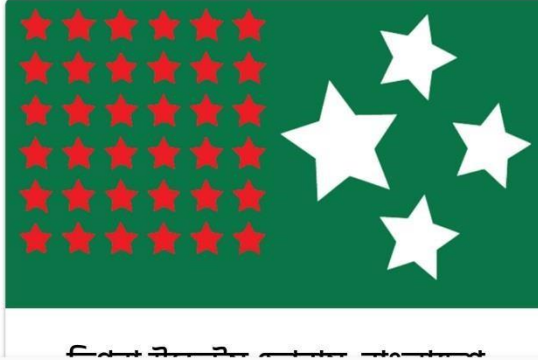


Fig 4.1.2A: Home

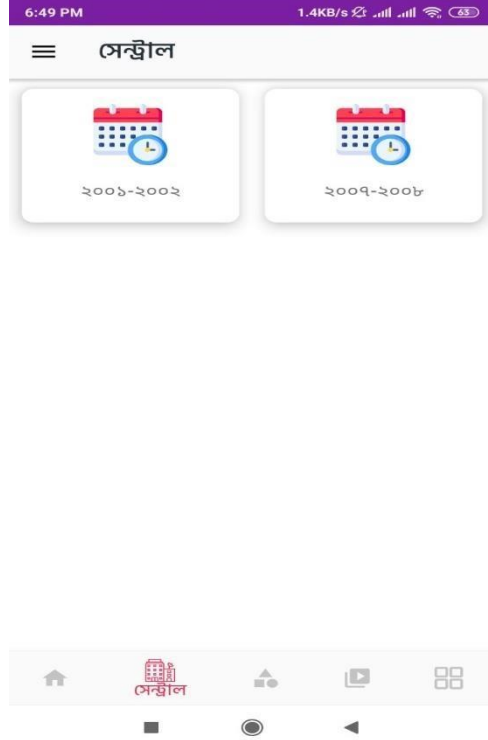


Fig 4.1.2B: Central Year List



Fig 4.1.2C: Central Committee List



Fig 4.1.2E: Branch Categories

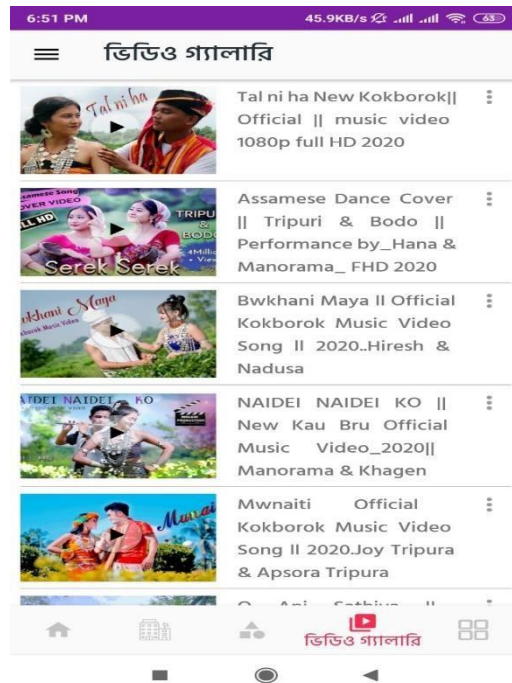


Fig 4.1.2J: Video Gallery

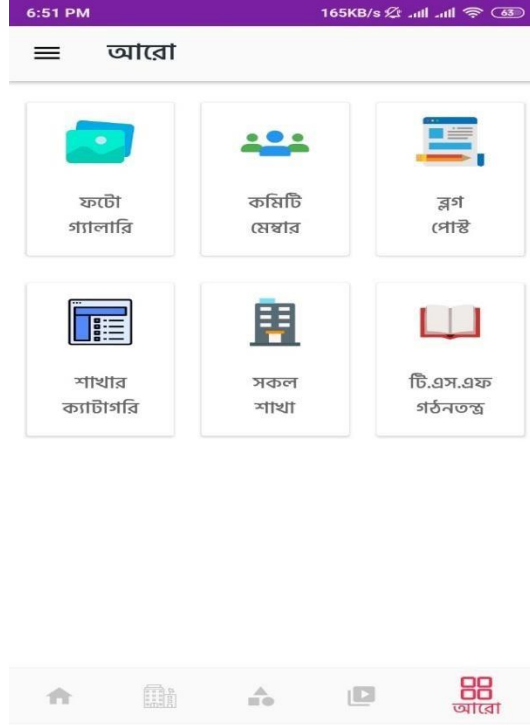


Fig 4.1.2M: More

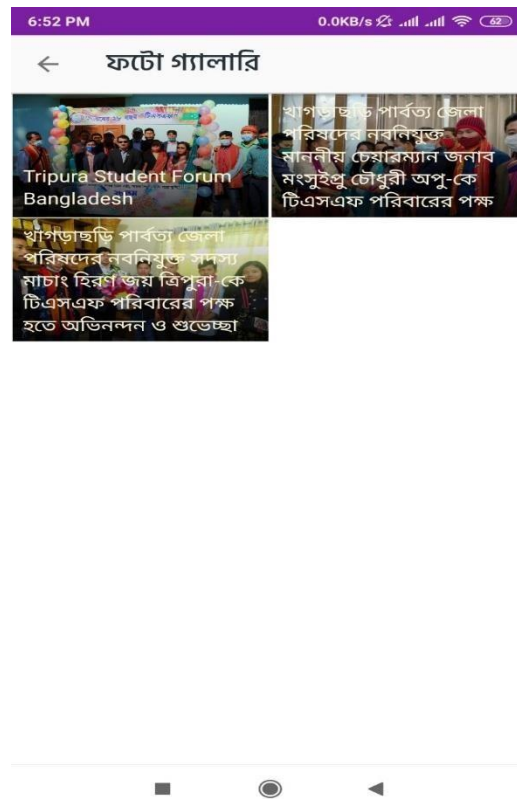


Fig 4.1.2N: Photo Gallery



Fig 4.1.2Q: Blog List

4.2 Back-End Design

In the application, the back end is not available/visible to the user. The back-end support for the user in every program. The consumer provides the input through the front-end portion, then the back-end part processes the input. It's the functionality behind the scenes. We can easily create back-end architecture by using Brackets and Android Studio.

4.3 Interaction Design and UX

Interaction design is a control that watches the interaction between a framework and its client. Actually, interaction design is the cycles which comprehend the client issue space, measure the issue and discover the outcomes, preform activities by the regarding results and take care of the issue. Then again, client experience centers on the general understanding between a client and an application. In our application, there are a few highlights that can cooperate with the client. One of the components is

network creation, which can impart data or insight starting with one then onto the next. That could be inspiring the client to the application. For UX we are attempted to give some incredible experience by our application. We keep our framework basic and simpler for better understanding and execution for the client. We endeavored to diminish the information stacking time on our application and that exertion will be proceeded [6].

4.4 Implementation Requirements

First of all, we want to develop front-end and back-end and database Relation of this app. We need some IDE and need some programming language markup language styling and database. This app is an android and web-based app. So, this app can be used web browser and android mobile.

For admin panel- we need some tools like XAMPP to turn our machine into local server. For front-end design we need HTML, CSS, JavaScript and Bootstrap. Used MySQL database for store data and need PHP to process data and interact with the database. For user panel- we need some tools like Android Studio, Retrofit Library, Picasso Library, YouTube API Player, Android Emulator/Android Phone.

CHAPTER-05

IMPLEMENTATION AND TESTING

5.1 Implementation of Database

In this piece of database use, in which we implemented the DMBS on the based on unique equipment, streamline the database to run the best part of the equipment and finally load the information after database development in the product level.

5.1.1 Database Design

Database configuration is the way toward creating a detail information model of database. This information model contains all the required intelligent and physical plan decisions and physical stockpiling boundaries expected to produce a plan in an information definition language, which would then be able to be utilized to make a database. For any substance, a fully ascribed knowledge model includes definite credits. A database gathers and stores information in such sorted out way that

information prerequisites are fulfilled by the database. The overall goal is to make data access simple, fast, cheap and adaptable for the client. There are likewise some particular targets like regulator repetition from disappointment, protection, security and execution. An assortment of relative records makes up a table. To plan and store information to the required structures database tables are readied [7]. Two fundamental setting for a database are:

- Primary key: This field is interesting for all the record events
- Foreign key: This field used to set connection between tables Normalization is a strategy to dodge repetition in the tables.

5.1.2 Database Management System

The DBMS provides users and programmers with a structured way to build, retrieve, update and manage data in our MYSQL framework. A database management system (DBMS) is system software for building and maintaining databases.

5.1.3 MySQL

MYSQL is a very popular source software for relationships with SQL databases. One of the best RDBMS used for creating web-based applications is MYSQL. As a database for our proposed system, we use MYSQL. It's well worth it. There is no question that Oracle builds an amazing database, but many MYSQLs can be avoided for free by the associated costs. It can be installed and used, but in the process, you do not pay anything. We have now shown our project back-end database table below:

Table	Action	Rows	Type	Collation	Size	Overhead
<input type="checkbox"/> tbl_admin	★ Browse Structure Search Insert Empty Drop	3	InnoDB	utf8_general_ci	32.0 KiB	-
<input type="checkbox"/> tbl_branch	★ Browse Structure Search Insert Empty Drop	4	InnoDB	utf8_general_ci	32.0 KiB	-
<input type="checkbox"/> tbl_cat_branch	★ Browse Structure Search Insert Empty Drop	7	InnoDB	utf8_general_ci	16.0 KiB	-
<input type="checkbox"/> tbl_central	★ Browse Structure Search Insert Empty Drop	1	InnoDB	utf8_general_ci	16.0 KiB	-
<input type="checkbox"/> tbl_central_year	★ Browse Structure Search Insert Empty Drop	1	InnoDB	utf8_general_ci	16.0 KiB	-
<input type="checkbox"/> tbl_cn_committee	★ Browse Structure Search Insert Empty Drop	0	InnoDB	utf8_general_ci	32.0 KiB	-
<input type="checkbox"/> tbl_committee	★ Browse Structure Search Insert Empty Drop	1	InnoDB	utf8_general_ci	32.0 KiB	-
<input type="checkbox"/> tbl_photos	★ Browse Structure Search Insert Empty Drop	0	InnoDB	utf8_general_ci	16.0 KiB	-
<input type="checkbox"/> tbl_posts	★ Browse Structure Search Insert Empty Drop	2	InnoDB	utf8_general_ci	32.0 KiB	-
<input type="checkbox"/> tbl_video	★ Browse Structure Search Insert Empty Drop	4	InnoDB	utf8_general_ci	16.0 KiB	-
<input type="checkbox"/> tbl_year	★ Browse Structure Search Insert Empty Drop	2	InnoDB	utf8_general_ci	32.0 KiB	-
11 tables	Sum	25	InnoDB	utf8_general_ci	272.0 KiB	0 B

Fig 4.2.1: All Tables of database.

5.1.4 Retrofit

Retrofit is an Android and Java type-safe HTTP client developed by Square (Dagger, Okhttp). By modeling over a base URL and allowing interfaces return the interface, Retrofit works entities from the endpoint of REST [8], [9]. We fetch API data by using Retrofit Library on Android Studio.

5.1.5 Picasso

A powerful Android library for downloading and caching photos. In Android apps, photos add much-needed meaning and visual flair [10]. We load image/photo by using Picasso Library on Android Studio.

5.1.6 YouTube API Player

The YouTube Android Player API allows video playback features to be integrated into your Android applications. The API specifies methods for loading and playing YouTube videos (and playlists) and for the video playback experience to be personalized and controlled [11]. YouTube API Player mainly used for playing YouTube video on Android App.

5.2 Implementation and Interaction

A software system's architecture characterizes the system in terms of components and interactions between those segments.

Connections can be found all over the physical world. The secret to making a system dynamic and attractive to consumers is cooperation. Making a system intuitive is important and we are also trying to do it. As stated before, we also integrate some exceptional components to associate our framework as an understudy and study update network. Our application is modified effectively and the association of our application with the peoples is visible.

5.3 Testing Implementation

Test Case	Test Input	Expected Output	Actual Output	Result	Tested On
1.Install Admin Panel	Tested on localhost	Successful Install on localhost	Install successful.	Passed	05-11-2020
2.Admin Login	Without Account.	To redirect to access the preference from admin login page.	Imposed the Restriction.	Passed	05-11-2020

3.Add Admin	Required all input field	Successfully admin added	Successful.	Passed	05-11-2020
4. Update Admin	Required all input field	Successfully admin updated	Successful.	Passed	05-11-2020
5. Delete Admin	Delete button click	Successfully admin deleted	Successful.	Passed	05-11-2020
6. Add Committee	Required all input field	Successfully added	Successful.	Passed	05-11-2020
7. Update Committee	Required all input field	Successfully updated	Successful.	Passed	05-11-2020

8. Delete Committee	Delete button click	Successfully deleted	Successful.	Passed	05-11-2020
9. Add Photo	Required all input field	Successfully added	Successful.	Passed	05-11-2020
10. Update Photo	Required all input field	Successfully updated	Successful.	Passed	05-11-2020

11. Delete Photo	Delete button click	Successfully deleted	Successful.	Passed	05-11-2020
12. Add Video	Required all input field	Successfully added	Successful.	Passed	05-11-2020
13. Update Video	Required all input field	Successfully updated	Successful.	Passed	05-11-2020
14. Delete Video	Delete button click	Successfully deleted	Successful.	Passed	05-11-2020
15. Add Year	Required all input field	Successfully added	Successful.	Passed	05-11-2020

16. Update Year	Required all input field	Successfully updated	Successful.	Passed	05-11-2020
17. Delete Year	Delete button click	Successfully deleted	Successful.	Passed	05-11-2020
18. Add Branch Category	Required all input field	Successfully added	Successful.	Passed	05-11-2020

19. Update Branch Category	Required all input field	Successfully updated	Successful.	Passed	05-11-2020
20. Delete Branch Category	Delete button click	Successfully deleted	Successful.	Passed	05-11-2020
21. Add Branch	Required all input field	Successfully added	Successful.	Passed	05-11-2020
22. Update Branch	Required all input field	Successfully updated	Successful.	Passed	05-11-2020
23. Delete Branch	Delete button click	Successfully deleted	Successful.	Passed	05-11-2020
24. Add Central Year	Required all input field	Successfully added	Successful.	Passed	05-11-2020
25. Update Central Year	Required all input field	Successfully updated	Successful.	Passed	05-11-2020
26. Delete Central Year	Delete button click	Successfully deleted	Successful.	Passed	05-11-2020

24. Add Central Committee	Required all input field	Successfully added	Successful.	Passed	05-11- 2020
25. Update Central Committee	Required all input field	Successfully updated	Successful.	Passed	05-11- 2020
26. Delete Central Committee	Delete button click	Successfully deleted	Successful.	Passed	05-11- 2020

Table 5.3: Test Case Table for Android Application ‘TSF BD’.

5.4 Test Result and Reports

Test report is expected to reflect testing brings about a proper way, which offers a chance to gauge testing result rapidly. It is a report that records information got from an assessment try in an association way, portray the ecological or working conditions, and shows the correlation of test results with destinations.

In section 5.4. We indicated the test case, test input, anticipated yield, genuine yield lastly we discover our outcomes and the test result was very fruitful. Our application is fulfilled by the people. Ease of use testing looks at the accompanying component of the application.

- How simple it is to utilize the application?
- That it is so natural to gain proficiency with the application?
- How advantageous is the application to end - people?

So, toward the end we can complete the outcomes as the advantages of convenience testing to the furthest limit of the Tripura Community People. Application is simpler to utilize.

Application is more promptly acknowledged by Tripura Community People.

CHAPTER-06

Impact on Society, Ethical Aspects, Sustainability

6.1 Impact on Society

Most of the Tripura Community people does not know about TSF BD activities. There is a big communication gap between TSF organization and Tripura Community People. In modern era, most of the organization used social media platform and spread their activities on social media. TSF also spread their activities here and connecting all Tripura community people.

6.2 Ethical Aspects

Using in this android app will be able to connect all Tripura community people here. Tripura community people will be known about TSF branches, committee member,

activities, etc. As a result, TSF will be able to focus more on improving the developing of their organization.

6.3 Sustainability Plan

This application will be used mainly for Tripura Students' Forum, Bangladesh, Tripura community people. They can management systems for their organization through this application. And admin will be able to manage the organization details by using admin panel. Any user can know the information about Android Application 'TSF BD' without login.

CHAPTER-07

Conclusion and Future Scope

7.1 Discussion and Conclusion

As of late, with the pace of innovative turn of events, individuals have become increasingly requesting as far as personal satisfaction, and the TSF president as of late hope to improve a presentation in their organization to get the most elevated pace of information and involvement with their understudy.

7.2 Scope for Further Developments

A few thoughts and highlights can be considered as a future work for this venture. These highlights can be summed up in the accompanying focuses:

- In future, we will add real-time chatting features.
- In future, we will add user registration features.
- In future, we will add user create own blog post.

APPENDIX

8.1 Appendix: Project Reflection

Last year's journey, we gained more knowledge and experience to complete our final project. I'm working hard to finish the final project, and I spend a lot of time behind this project. We didn't know how to complete this project this time when I began our project work. But the proper plan is helping us to complete this project.

Every time Madam and Sir, our supervisor and co-supervisor, helps us when we face some problems.

Finally, we are thankful to Almighty GOD and our honorable supervisor, Ms. Subhenur Latif, and co-supervisor, Mr. Narayan Ranjan Chakraborty, for their unending encouragement and guidance during the session.

REFERENCES

- [1]"Submitted to Daffodil International University", *Student Paper*.
- [2]"Submitted to Ghana Technology University College", *Student Paper*.
- [3]"Submitted to University of Bahrain", *Student Paper*.
- [4]"Submitted to Higher Education Commission Pakistan", *Student Paper*.
- [5]"<http://dspace.daffodilvarsity.edu.bd:8080>", *Internet Source*.
- [6]"Submitted to University of Greenwich", *Student Paper*.
- [7]"<http://dspace.library.daffodilvarsity.edu.bd:8080>", *Internet Source*.
- [8]"Vladislavljivic, Goran T., Nauman Khalid, Marcos A. Neves, Tajashi Kuroiwa, Mitsutoshi Nakajima, Kunihiro Uemura, Sosaku Ichikawa, and Isao Kabayashi. "Industrial lab-on-a-a-chip: Design, applications and scale-up for drug discovery and delivery", *Advanced Drug Delivery Reviews*, 2013", *Publication*.
- [9]"Submitted to University of Kent at Canterbury", *Student Paper*.
- [10]"Submitted to University of Hertfordshire", *Student Paper*.
- [11]"W. Hasselbring. "Web data integration for e-commerce applications", *IEEE Multimedia*, 2002", *Publication*.
- [12]"Submitted to Jagran Lakecity University", *Student Paper*.
- [13]"Submitted to Intercollege", *Student Paper*