

TOUR GUIDE

BY

KHALID HASAN

ID: 181-15-10813

AND

TRESA RANI GHOSH

ID: 181-15-10917

This Report Presented in Partial Fulfillment of the Requirements for the
Degree of Bachelor of Science in Computer Science and Engineering

Supervised By

MD MAHADE HASAN

Lecturer

Department of CSE

Daffodil International University

Co-Supervised By

Tapasy Rabeya

Lecturer

Department of CSE

Daffodil International University



DAFFODIL INTERNATIONAL UNIVERSITY

DHAKA, BANGLADESH

6 JANUARY 2022

APPROVAL

This Project/internship titled “**Tour Guide**”, submitted by Khalid Hasan ID No: 181-15-10813 and Tresa Rani Ghosh ID No: 181-15-10917 to the Department of Computer Science and Engineering, Daffodil International University has been accepted as satisfactory for the partial fulfillment of the requirements for the degree of B.Sc. in Computer Science and Engineering and approved as to its style and contents. The presentation has been held on Thursday January 06, 2022.

BOARD OF EXAMINERS



Chairman

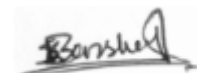
Dr. S.M Aminul Haque

Associate Professor and Associate Head

Department of Computer Science and Engineering

Faculty of Science & Information Technology

Daffodil International University



Internal Examiner

Dr. Sumit Kumar Banshal (SKBL)

Assistant Professor

Department of Computer Science and Engineering

Faculty of Science & Information Technology

Daffodil International University



Internal Examiner

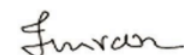
Md. Abbas Ali Khan (AAK)

Senior Lecturer

Department of Computer Science and Engineering

Faculty of Science & Information Technology

Daffodil International University



External Examiner

Shah Md. Imran

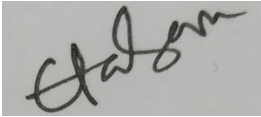
Industry Promotion Expert

LICT Project, ICT Division, Bangladesh

DECLARATION

We hereby declare that, this project has been done by us under the supervision of **Md. Mahade Hasan, Lecturer, Department of CSE** Daffodil International University. We also declare that neither this project nor any part of this project has been submitted elsewhere for award of any degree or diploma.

Supervised by:



Md. Mahade Hasan
Lecturer
Department of CSE
Daffodil International University

Co-Supervised by:

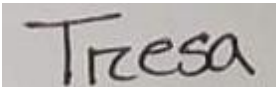


Tapasy Rabeya
Lecturer
Department of CSE
Daffodil International University

Submitted by:



Khalid Hasan
ID: 181-15-10813
Department of CSE
Daffodil International University



Tresa Rani Ghosh
ID: 181-15-10917
Department of CSE
Daffodil International University

ACKNOWLEDGEMENT

First we express our heartiest thanks and gratefulness to almighty God for His divine blessing makes us possible to complete the final year project/internship successfully.

We really grateful and wish our profound our indebtedness to **Md. Mahade Hasan, Lecturer**, Department of CSE Daffodil International University, Dhaka. Deep Knowledge & keen interest of our supervisor in the field of “*Web Development*” to carry out this project. His endless patience, scholarly guidance, continual encouragement, constant and energetic supervision, constructive criticism, valuable advice, reading many inferior draft and correcting them at all stage have made it possible to complete this project.

We would like to express our heartiest gratitude to Professor **Dr. Touhid Bhuiyan**, Head, Department of CSE, for his kind help to finish our project and also to other faculty member and the staff of CSE department of Daffodil International University.

We would like to thank our entire course mate in Daffodil International University, who took part in this discuss while completing the course work.

Finally, we must acknowledge with due respect the constant support and patients of our parents.

ABSTRACT

Tour Guide is a website and it's primarily showing different types of tour packages and can book any tour packages. It can also be used for taking information about different types of places. Basically, there are three types of users on our website. This website is mainly focused for all types of ages people of our country. Normal users can book any tour packages from our website. They don't have to take any tension for choosing any place for tour. We will ensure that everyone can travel at a best price from us with proper safety. Partner users can make a deal with us. They can go for a tour with us as well as they can also arrange tour packages. From this they can also be benefited by earning some money. Every user can cancel their bookings also if they needed. Admins are the most powerful among all the users. Admin can add a tour, delete a tour. Admins can also select members those who want to be partner with us. Our website is secure enough that no other users can access any functionality that we don't give permission to access. Users can buy and book tour in just some clicks. We believe this application will make easy to all types of people those who want to go anywhere for tour.

TABLE OF CONTENTS

| Contents | Page |
|---|-------------|
| Approval | II |
| Declaration | III |
| Acknowledgement | IV |
| Abstract | V |
| List of figures | VIII |
| List of tables | X |
| CHAPTER | |
| CHAPTER 1: Introduction | 1-3 |
| 1.1 Introduction | 1 |
| 1.2 Motivation | 1 |
| 1.3 Objectives | 2 |
| 1.4 Expected Outcomes | 2 |
| 1.5 Project Management and Finance | 2 |
| 1.6 Report Layout | 3 |
| Chapter 2: Background | 4-5 |
| 2.1 Preliminaries/Terminologies | 4 |
| 2.2 Related Works | 4 |
| 2.3 Comparative Analysis | 4 |
| 2.4 Scope of the Problem | 5 |
| 2.5 Challenges | 5 |
| Chapter 3: Requirement Specification | 6-15 |
| 3.1 Business Process Modeling | 6 |
| 3.2 Requirement Collection and Analysis | 7 |
| 3.3 Use Case Modeling and Description | 10 |
| 3.4 Logical Data Model | 12 |
| 3.5 Design Requirement | 12 |

| | |
|---|--------------|
| Chapter 4: Design Specification | 16-17 |
| 4.1 Front-end Design | 16 |
| 4.2 Back-end Design | 16 |
| 4.3 Interaction Design and User Experience | 16 |
| 4.4 Implementation Requirements | 17 |
| Chapter 5: Implementation and Testing | 18-41 |
| 5.1 Implementation of Database | 18 |
| 5.2 Implementation of Front-end Design | 18 |
| 5.3 Testing Implementation | 36 |
| 5.4 Test Results and Reports | 40 |
| Chapter 6: Impact on Society, Environment and Sustainability | 42-43 |
| 6.1 Impact on Society | 42 |
| 6.2 Impact on Environment | 42 |
| 6.3 Ethical Aspects | 43 |
| 6.4 Sustainability Plan | 43 |
| Chapter 7: Conclusion and Future Scope | 44-45 |
| 7.1 Discussion and Conclusion | 44 |
| 7.2 Scope for Further Developments | 45 |
| REFERENCES | 46 |

LISTS OF FIGURES

| FIGURES | PAGE NO |
|--|----------------|
| Figure 3.1.1: Business process modeling | 6 |
| Figure 3.2.1: Software development life cycle (Agile). | 7 |
| Figure 3.2.2: Flow Chart | 8 |
| Figure 3.2.3: Data Flow Diagram for Website | 9 |
| Figure 3.2.4: E-R Diagram of the system | 10 |
| Figure 3.3.1: Use case diagram | 11 |
| Figure 3.4.1: Logical Data Model | 12 |
| Figure 3.5.1: Architecture Design for Galaxy S5 | 13 |
| Figure 3.5.2: Architecture Design for iPhone 5S | 14 |
| Figure 3.5.3: Architecture Design for Nest Hub Max | 15 |
| Figure 5.2.1: Homepage Section 1 | 19 |
| Figure 5.2.2: Homepage Section 2 | 20 |
| Figure 5.2.3: Homepage Section 3 | 20 |
| Figure 5.2.4: Homepage Section 4 | 21 |
| Figure 5.2.5: Sign up page | 22 |
| Figure 5.2.6: Log in page | 23 |
| Figure 5.2.7: Reset Password page | 24 |
| Figure 5.2.8: All Tours page | 25 |
| Figure 5.2.9: Sorting page | 25 |
| Figure 5.2.10: About Us page | 26 |
| Figure 5.2.11: Contact with Us page | 27 |

| | |
|---|----|
| Figure 5.2.12: FAQs page | 27 |
| Figure 5.2.13: Order a tour section 1 | 28 |
| Figure 5.2.14: Order a tour section 2 | 29 |
| Figure 5.2.15: Order a tour section 3 | 29 |
| Figure 5.2.16: Order a tour section 4 | 30 |
| Figure 5.2.17: Normal User Dashboard section 1 | 31 |
| Figure 5.2.18: Normal User Dashboard section 2 | 31 |
| Figure 5.2.19: Partner User Dashboard section 1 | 32 |
| Figure 5.2.20: Partner User Dashboard section 2 | 33 |
| Figure 5.2.21: Partner User Dashboard section 3 | 33 |
| Figure 5.2.22: Partner User Dashboard section 4 | 34 |
| Figure 5.2.23: Partner User Dashboard section 5 | 34 |
| Figure 5.2.24: Admin Dashboard section 1 | 35 |
| Figure 5.2.25: Admin Dashboard section 2 | 36 |

LISTS OF TABLES

TABLES

PAGE NO

Table 5.4.1: Different Test Cases

41

Chapter 1

INTRODUCTION

1.1 Introduction

People who love to travel almost always visit many places. Many times, alone and many times everyone goes for a tour with the family. It needs a lot of information to get to a new place. But there are very few applications or web applications that can get all kinds of news together.

Many times, a lot of wrong information is given in many places. For which people face many kinds of dangers. Basically, those who love to travel to many different places want to get around everywhere at a little lower cost. Besides, it is often not possible to gather all the news separately. The number of Android applications in our country for tour is limited. And those who have other platforms can't use this. There are also many people who want to start their own business in tour related fields but there is no such a platform for them where they can find everything and can invest their money. In this case, the tour guide website will come handy. Since it is a website, users can use it on any of their platforms. Besides, those who want to do business in tour related fields can also do business. They, can easily organize any tour program through this website. From this they will be able to earn money and can serve people. The website can be used with any browser. All types of information can be found accurately inside this website. We believe it will make life easier for all types of tour freak persons.

1.2 Motivation

Since there is no better way to manage a tour, our main goal is to create a beautiful and sustainable tour website for people of all types and ages so that everyone can easily visit the place of their choice. Those who want to go out with their family can also go out with their family safely and soundly. Women do not have to be tense in any kind of insecurity. This will serve as an easy medium for everyone who will go to any tour and who will be organizing the tour. Since it is a website, people of any age with internet connection can

use it regardless of the platform they are using. We have made our website highly secure so that all our users are protected from any security vulnerabilities and do not have to use a new login system.

1.3 Objectives

Our main objective is to create a website where all types of people can choose their desire tour package and if anyone wants to organize a tour, they can do it through us. On the other hand, we will build a controllable and secure admin panel who can manage all types of tour programs and monitor everything. Since it is a website, it is accessible on all types of platforms and provides a secure environment for everyone. Our project is able to handle many users in real time and give a strong performance. Also, our project is platform independent, so everyone will be able to use it on any platform (Android, Windows, IOS, etc.)

1.4 Expected Outcome

The expected results of our project are straight and forward. It helps those who are interested in touring to see different types of promotional tour packages and book tour packages of their own choice. For those who want to organize a tour package, they can easily publish various tour packages.

1.5 Project Management and Finance

This project is planned to be open source from the very beginning when we started work. So, if any other features are needed or something new needs to be added then our admin panel can always contribute and add any new features. Since our website relies on backend server, we need money to cover the cost. We have designed the website efficiently so that it costs less later. The financing of this website will be managed from the money earned from the website.

1.6 Report Layout

Here our team has started to build an important platform that will be useful for both the helper and the one who needs help. This website will work like a ladder for everyone. Everyone can easily visit this place of their choice using this website. This website will have all the information to visit different places inside and outside of our country. In this case, no one have to work hard for searching, they will be able to take all information from our websites. So that they do not have to go anywhere. This website is being created with all kinds of people in mind. So, we believe that once this website is created, people of all ages will be able to visit the place of their choice without any tension.

CHAPTER 2

BACKGROUND

2.1 Preliminaries

All the tour companies in our country are taking more money from the common people. Most of the tour companies perform these things very inefficiently and causes a lot of problems. Ordinary people have to do a lot of research to find a tour package. After finding the tour package, they have to do a lot of research on this package. Many times, all kinds of information are not given. On the other hand, if a person wants to organize a tour through a site, then it is not possible to organize a tour with another site as a partner. So, if anyone wants to get some profit by organizing beautiful tours in different places together with someone else then it is not possible. Many times, not everyone has the ability to start a touring website on their own. We will plan to solve all these problems and try to get a comprehensive solution to the whole problem. We will do a study on other related work to make sure we get the best out of our project.

2.2 Related Works

There are so many types of tour related projects available on the internet. But the problem is they don't make tours considering all kinds of people. It is seen that if there is one feature then there is lack of another feature. There are some projects that matched some aspects of our project. But the problem is that it lacks a lot of features. So, our goal is to solve those problems and create a website to help those who want to go on tour and those who also want to organize tours. We also have the desire to create applications in the future.

2.3 Comparative Studies

Other related projects that were created for tour enthusiasts are lack of functionality such as those created for a certain number of people. Besides, there is no special facility for those who want to build their own business with tour arrangements. There is no information

about knowing all kinds of places and how to travel in all places at a lower cost. There are also many other benefits that are not given in all other websites for creating a beautiful tour. So, our website will take care of all these issues which are lacking in other projects. Many times, all applications can't be used due to differences platforms. That's why we created our project as a website so that our website is accessible to every user. So, everyone can use our website.

2.4 Scope of the problem

Our main goal is to create an improved website and solve all the problems related to the tour of the common people. Initially the website is made up of a few tours. But the database will design in such a way that it can be easily modified and more information related to new tours can be added easily. In addition, any other organization can easily use our website for their need. It will full fill everyone's need.

2.5 Challenges

Our challenge is to create the Tour Guide website to provide users with a safe and user-friendly environment. Creating a beautiful user interface is also a challenge. But since we have made this website platform independent, we must provide a consistent backend so that our website can work smoothly on every platform. Since this project will be dynamic, we must provide a feature rich admin panel.

CHAPTER 3

REQUIRED SPECIFICATION

Specific requirements state that what we need to be done by a system [1]. The specific requirements state that what is needs to be done in order for all the users to full fil their purpose.

3.1 Business Processing Model

The following figure 3.1.1 shows the business processing model of our website.

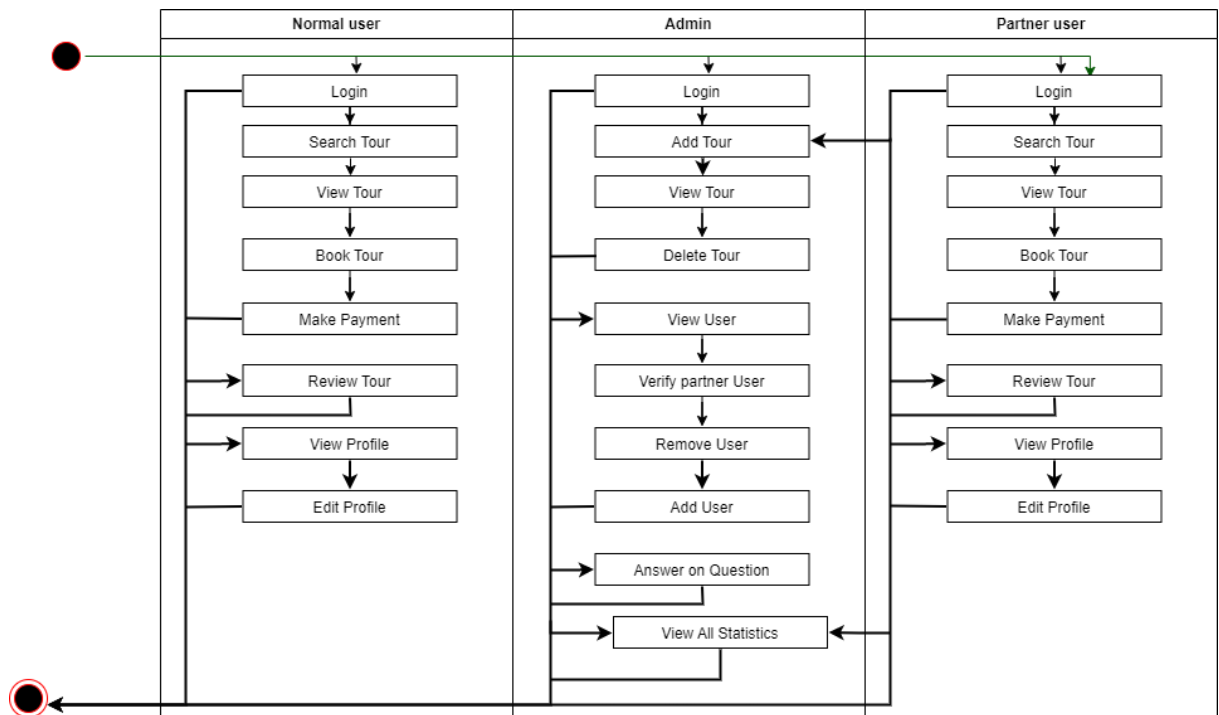


Figure 3.1.1: Business process modeling

3.2 Requirement Collection and Analysis

It is important to gather requirements for every project. Requirements gathering is important not only for the project, but also for the project management function. Requirements gathering is the most important step in a project. If the project team does not capture all the requirements for a response, the project is at risk. This can lead to many disputes and disagreements in the future. Therefore, consider requirements gathering as the primary responsibility of the project team. Gather project requirements as soon as possible. Then we have to start our work.

Software Development Life Cycle (Agile)

The agile model is one of the most popular versions of the systems development life cycle model for its linear sequential criteria, which suggests each phase must need to be totally completed before the following phase has start. At the tip of each phase, a review was taken to determine the project is on the correct path. Figure 3.2.1 illustrates the steps involved in agile model [2].

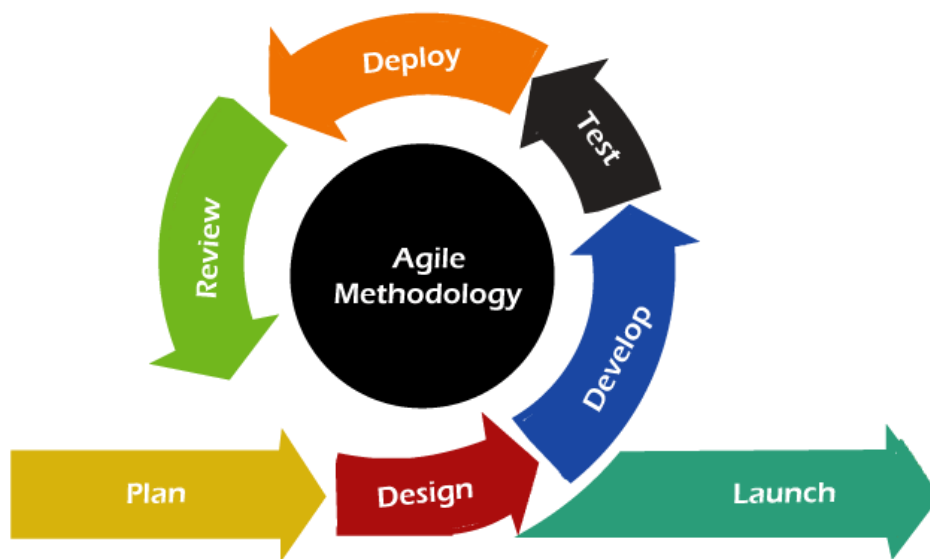


Figure 3.2.1: Software development life cycle (Agile).

Flow Chart

The process for applying the tour guide is shown in Figure 3.2.2.

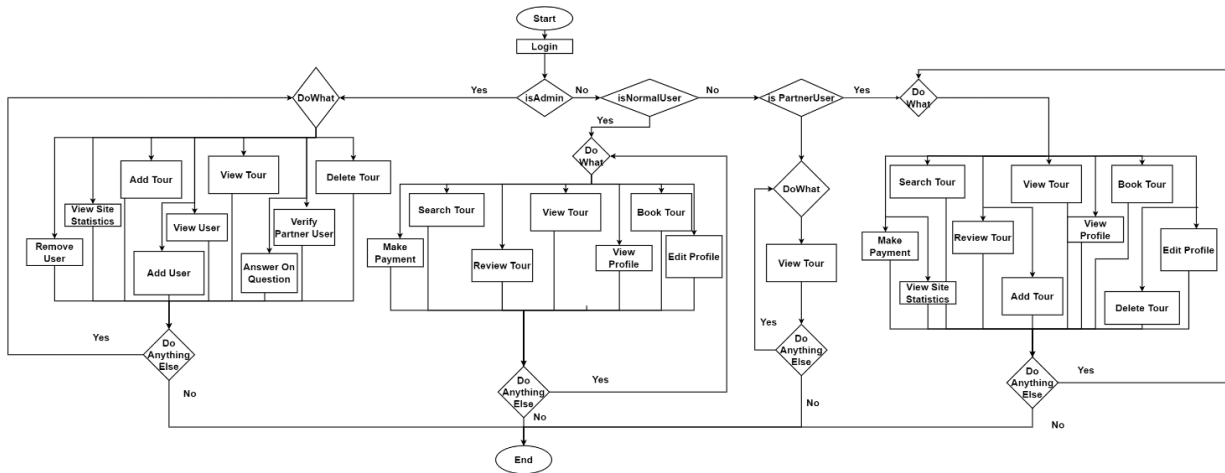


Figure 3.2.2: Flow Chart

Dataflow Diagram

Data Flow Diagram (DFD) is a graph which represents of a data “flow” through an information system that simulates aspects of a process. DFD is often used as a preliminary step to create a system overview that can be detailed later. DFD can also be used for data processing visualization (structural design). The DFD below shows what information is entering and leaving the system, where the data comes from, and where and where the data is stored. Figure 3.2.3 shows the data flow diagram of our website.

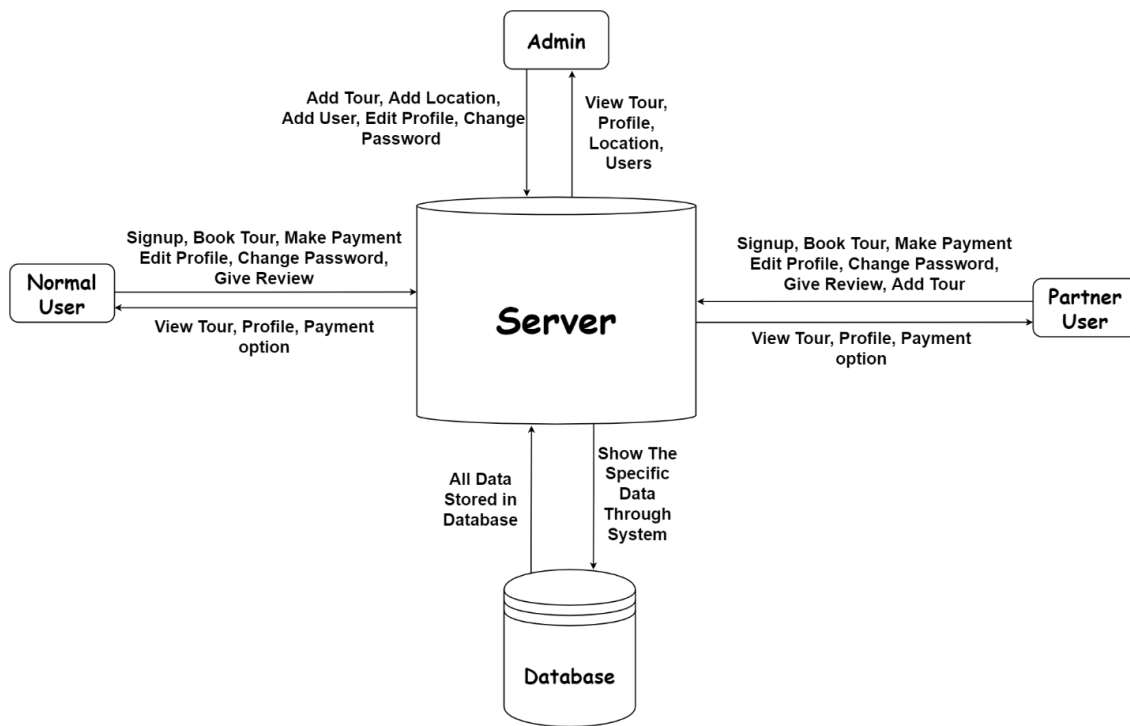


Figure 3.2.3: Data Flow Diagram for Website

Entity Relationship Diagram

Entity relationship diagrams (ERDs) show the relationships of sets of entities stored in a database [3]. ERD is a conceptual and expressive knowledge model that represents a framework of entity structures. Figure 3.2.4 shows the entity relationship diagram of our application.

The elements of an ERD are given below

- i) Entities
- ii) Relationship
- iii) Attribute

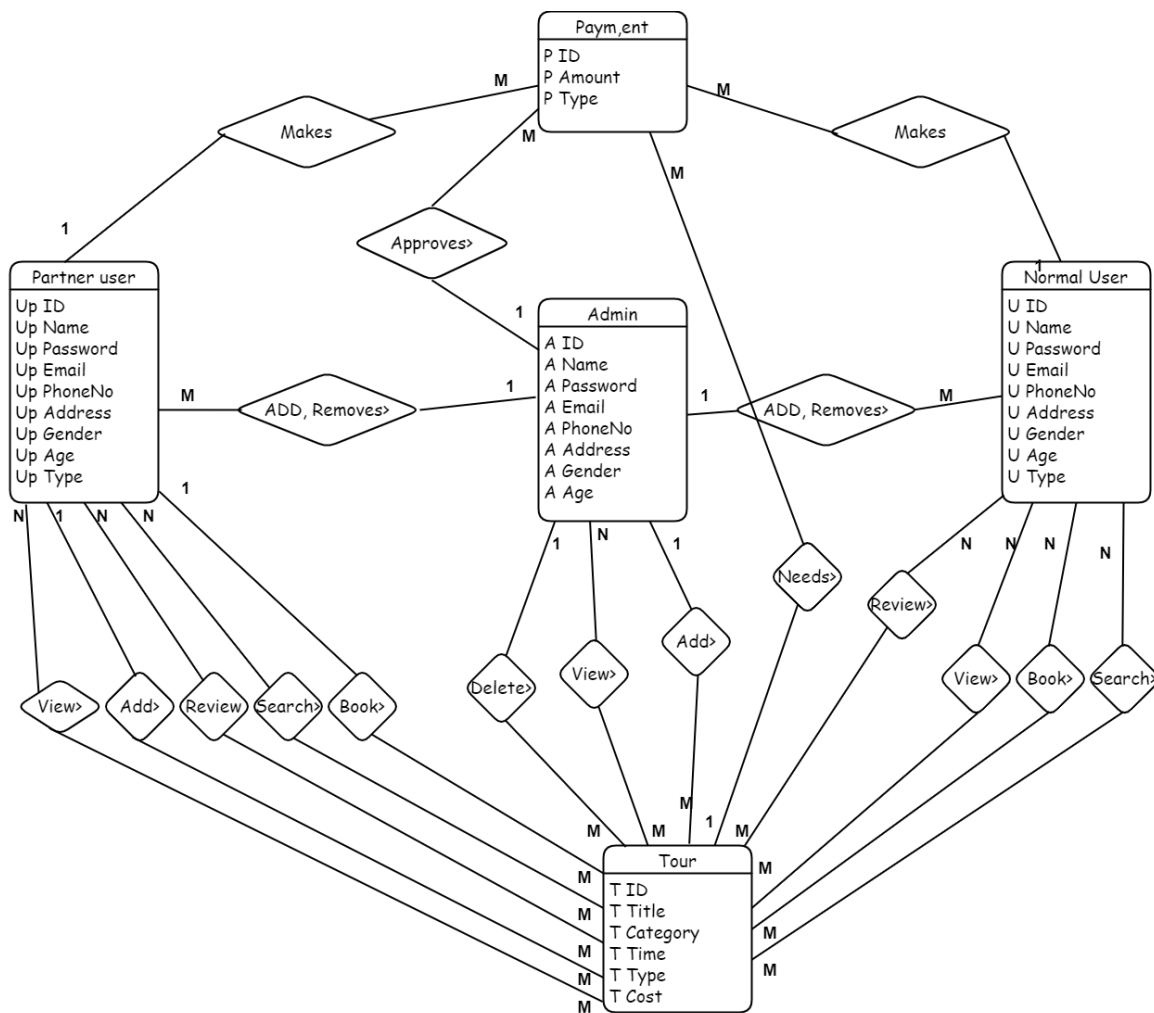


Figure 3.2.4: E-R Diagram of the system

3.3 Use case Modeling

In its simplest form, a use case diagram represents a user's interaction with a system, showing the relationship between the user and the various use cases in which the user

participates [4]. Use case diagrams can identify different types of system users and different use cases, and are often accompanied by other types of diagrams. A use case diagram that identifies and describes the functionality of our application is shown in Figure 3.3.1.

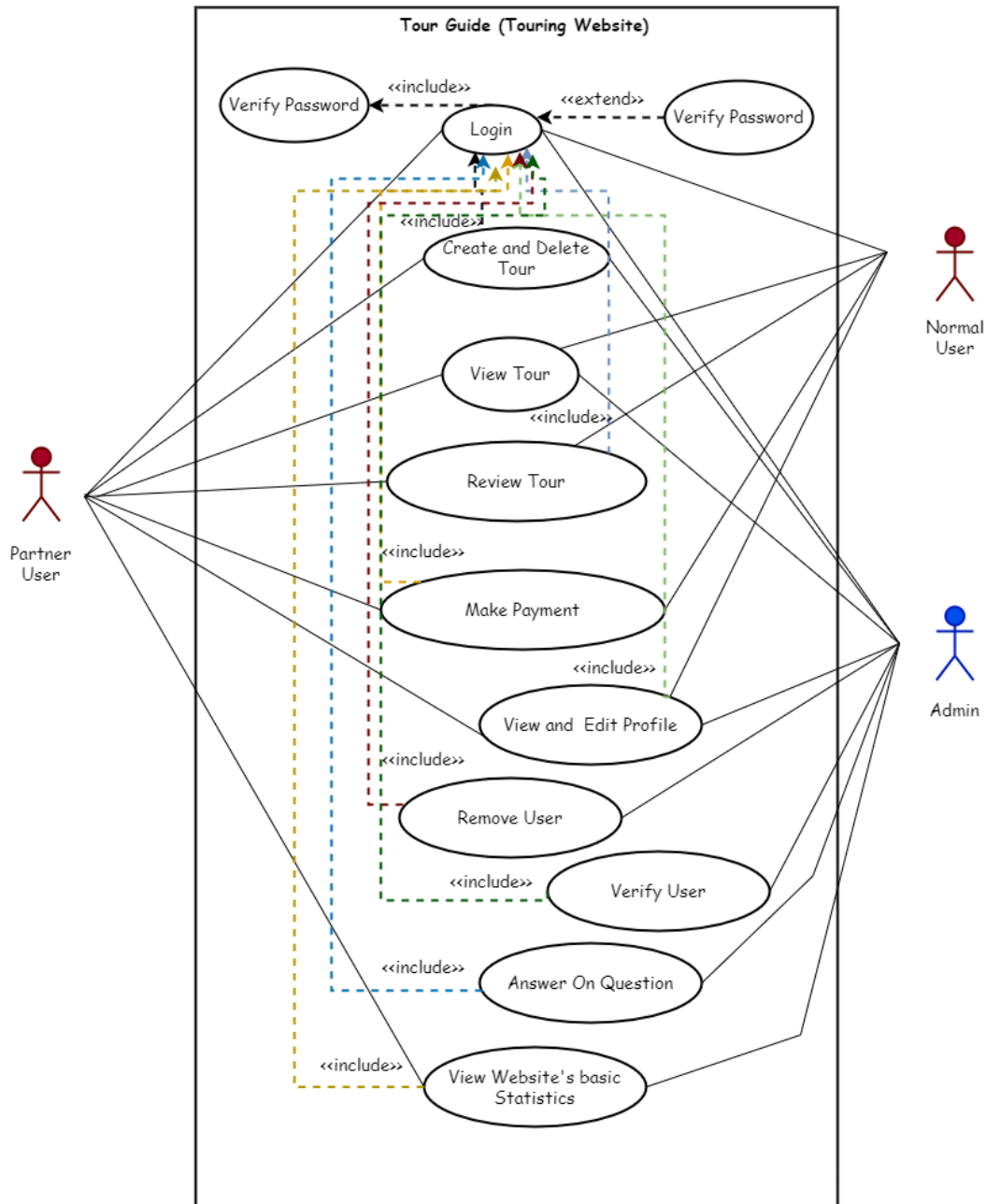


Figure 3.3.1: Use case diagram

3.4 Logical data Model

The database on our website is designed to ensure that queries in the database are smooth and provide decent performance on the server side. The logical data model represents the abstract structure of information fields [5]. The logical data model for the class schedule is shown in Figure 3.4.1

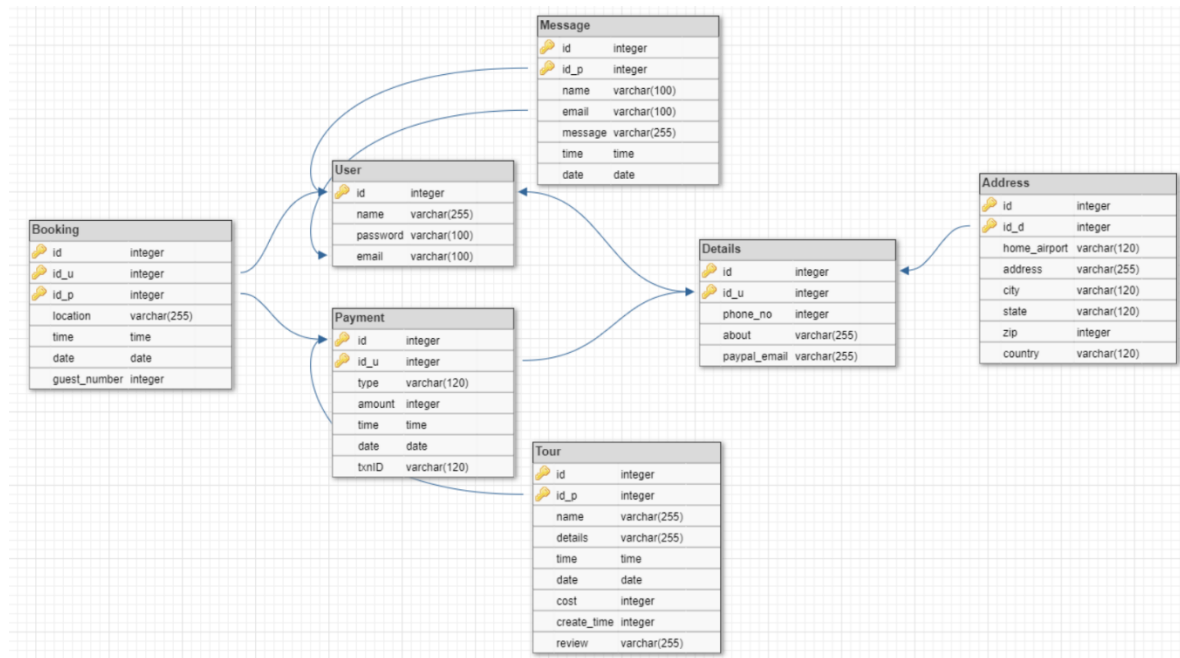


Figure 3.4.1: Logical Data Model

3.5 Design Requirement

System design is the process of defining the architecture, components, modules, interfaces, and data of a system to meet specific requirements. This chapter introduces the general design of a website system, including architectural design, use case diagrams, flowcharts, and multidimensional data languages. The overall design of our website is user-friendly.

In this project we use modern and updated design tools. The new concept is also considered user-friendly. All of things of our website is very smoother.

Architecture Design

We build our website in such a way that it can be use in different devices. And each of the device will show a different look and resolution. That's why every user will use it and get a very smoother performance. Some examples are given below

i) For Galaxy S5 users shown in figure 3.5.1

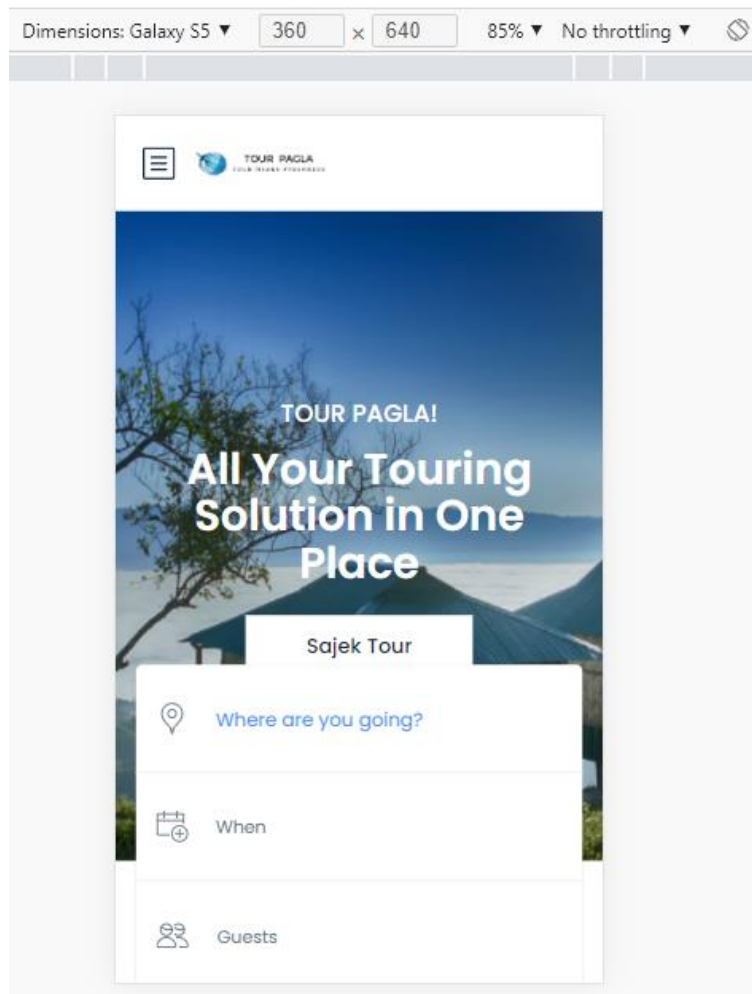


Figure 3.5.1: Architecture Design for Galaxy S5

ii) For iPhone 5S users shown in figure 3.5.2

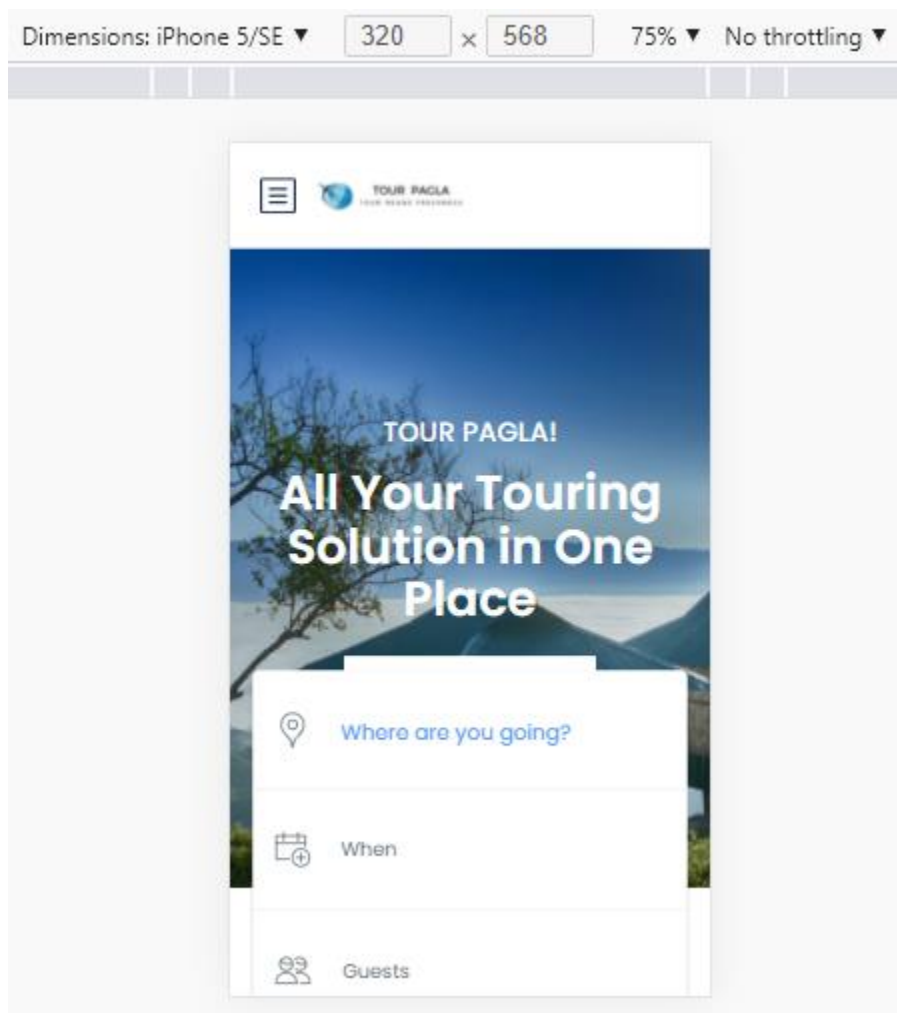


Figure 3.5.2: Architecture Design for iPhone 5S

iii) For Nest Hub Max users shown in figure 3.5.3

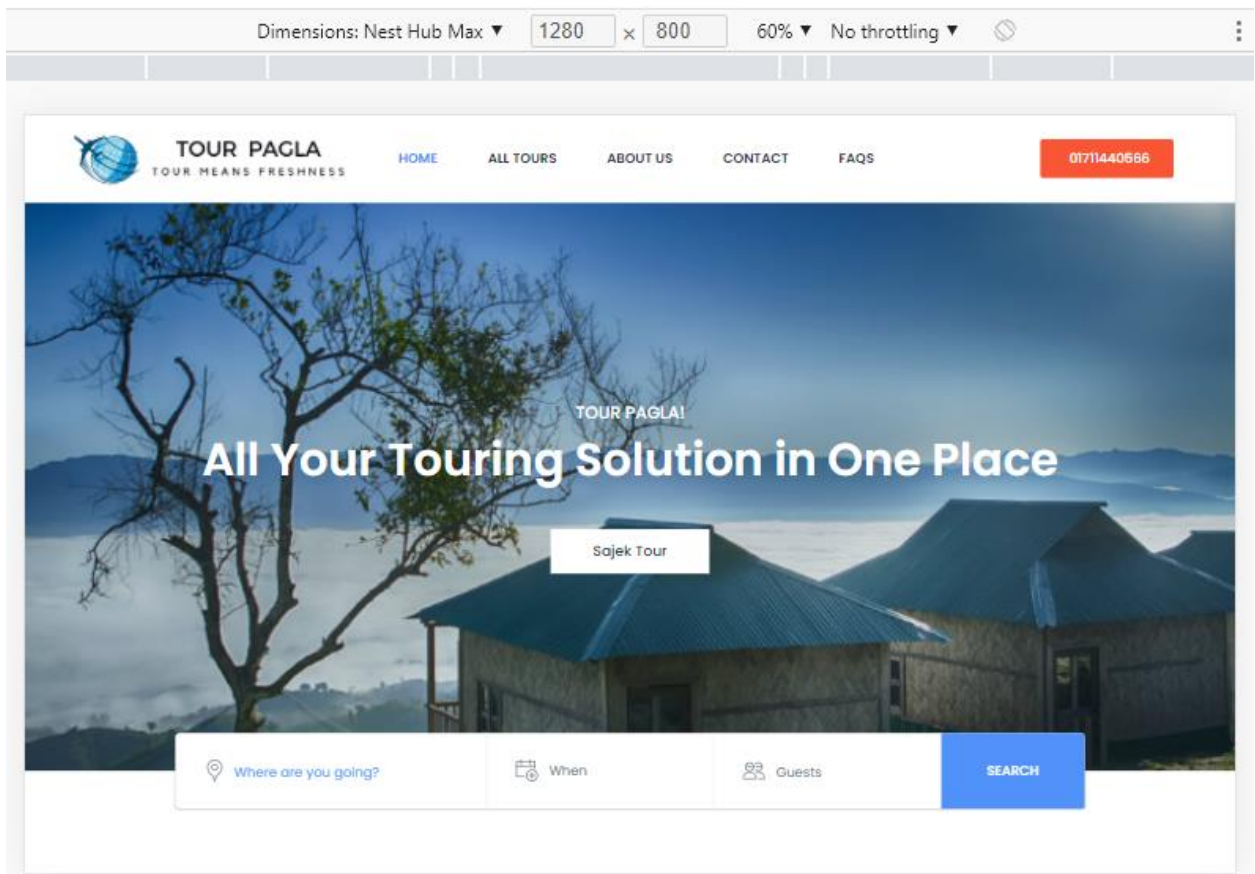


Figure 3.5.3: Architecture Design for Nest Hub Max

CHAPTER 4

DESIGN SPECIFICATION

4.1 Front-end Design

For designing the frontend of a website there are many options to choose from. HTML and CSS are must for designing a website. That's why we used HTML and CSS for our project. Mainly We use WordPress to build our website. Wordpress helps us a lot or building our website. In addition, we used JavaScript based frontend framework for adding many dynamic features in our website. We also used WPBakery, WordPress plugins and themes for designing our frontend. We used all of these for our front-end design and successfully done it. Our website is very user friendly and good looking.

4.2 Back-end Design

For back-end design we did a lot of things. Mainly we build our website based on WordPress. For writing WordPress, we use PHP language. So, all the work done for our website back-end design is mainly in PHP language. For back-end design one of the main parts is database. There are many tables in our website database. In these table how data can enter, how data can update and how data can view or delete all of these handled by MySQL. We use MySQL query for doing this. There are also some other content in back-end design. We also use WordPress CMS for smoothly handle all these things. That's how we build our back-end design.

4.3 Interaction Design and User Experience

Design of our website is very user friendly. We already made our website in a responsive design. Responsive design means user can use our website from any devices and they can easily access from any platform. If any user use our website from laptop or pc they will see

our website in a way and if user use our website from mobile then they will see our website in a different way. This is called responsive design. They can easily access website very smoothly with any other devices. Everything will be shown very nicely to all the users. We also maintain beautiful colors for our website. It helps our users to give a user-friendly environment. Everything will run very smoothly. And all the users will get best experience from our website.

4.4 Implementations Requirements

Implementing our design into life specific environment is much more required. As our website is a touring website so a lot of users will search many data in our website. Users will use all the features that have in our website. As our website depends on data so a strong database is required. Database is required to communicate from our website to the server. Another requirement is to make our website more responsive for every user. So, users can use any device whatever they want but will get same smoother experience.

CHAPTER 5

IMPLEMENTATION AND TESTING

5.1 Implementation of Database

Basically, our website is a Tour based website, many people will visit our website every day. They will see all tour packages. They will book tour packages. All information will be kept on our website. We build our database in such a way that everyone can use our website smoothly. All users will get a better experience. Although our website is based on WordPress but PHP has been used more for our back-end design. We have also used MySQL language for database management system. Our website is an open-source website, MySQL gives some special advantages for which we can easily edit it if for our needs. We have nicely implemented everything in database, that's helps all types of users to get a better and smoother experience.

5.2 Implementation of Front-end Design

For proper implementation of all users need on our website, we have to ensure that our front-end design has a beautiful and friendly interface for users. We build our website with a combination of several web pages where the user interface of each page is very user friendly for all the users. All of the UI and features will explain below

Homepage

Homepage is the first page of our website which will be visible for everyone after entering our website. We build our website as an open platform for every user. That's why everyone can see all the post which is published in home page. There are many options available in

our Homepage. Users can see "ALL TOURS". Users can sign in and sign up for our website. They can contact with us. They can know about us. They can also see FAQs. Users can search where they want to go. They can also select date and time. Users can take guests with themselves. They can also see different types of offers. Users can see which tour packages are featured for this week. They can also see the most popular tours for every month. They can also see the details of this tour packages. We will select all the best places for travel. We also ensure that we will give tours at a best price. Users can also make payment with bkaash, nagad or cash on delivery. Users also see 24/7 customer support. And they can ask us any questions. We are always ready to answer them.

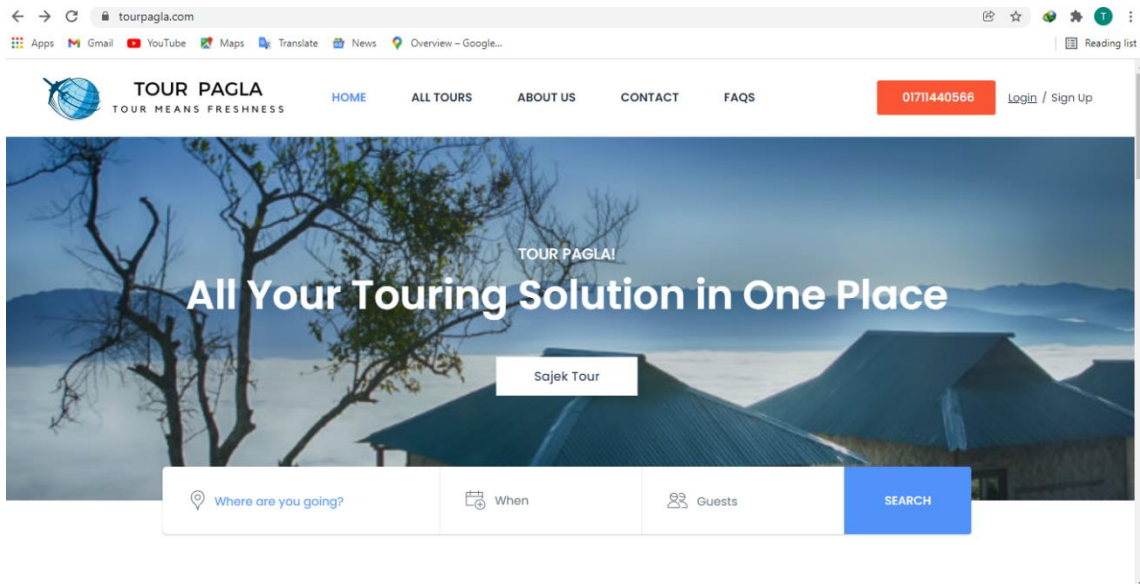


Figure 5.2.1: Homepage Section 1

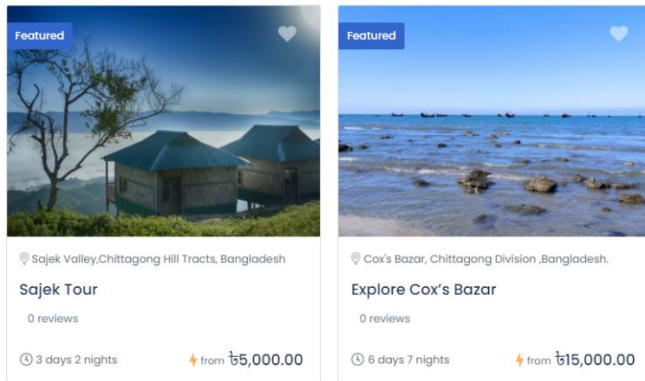


Figure 5.2.2: Homepage Section 2



Popular Tours This Month

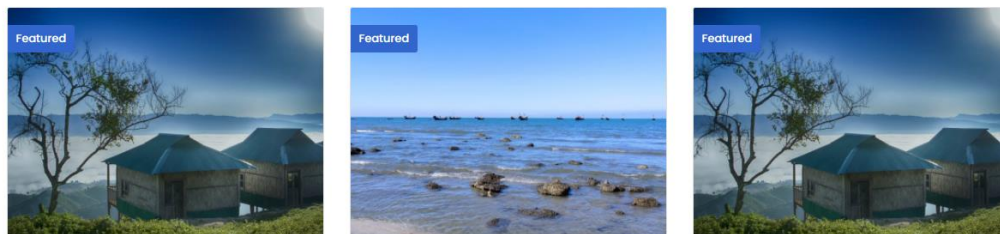





Figure 5.2.3: Homepage Section 3

| | | |
|--|--|--|
|  <p>Best Place Selection We Select Best Place for Your To Travel With Us</p> |  <p>Best Price We Are Committed To Give You Best Tours at Best Price</p> |  <p>27/7 Support Need a help? Or Have Any Question? We Are Always ready for You</p> |
|--|--|--|

Top Activity

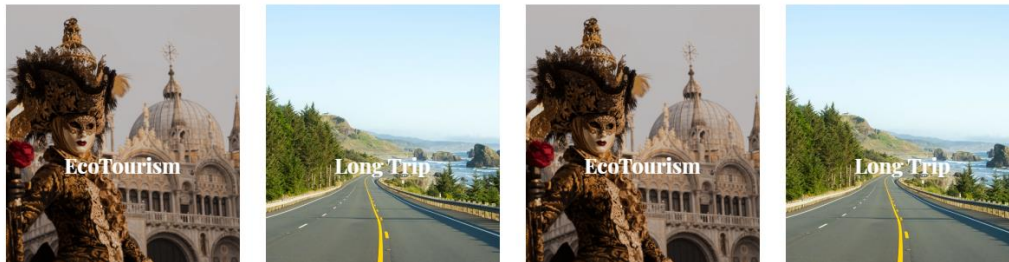


Figure 5.2.4: Homepage Section 4

Sign Up

There is a sign-up button on the top right corner of the home page. Users can see the sign-up page by clicking the sign-up button. Then users can see a dialog box. Those who are not registered in our website they can easily registered by giving their information. To be registered user will give their username, Full Name, Email and password. Then they have to select user type. There are two user types in our website like Normal user and partner user. Normal user can just book the tour packages but partner user can also arrange tour packages. Then users have to accept the terms and conditions and private policies of our website.

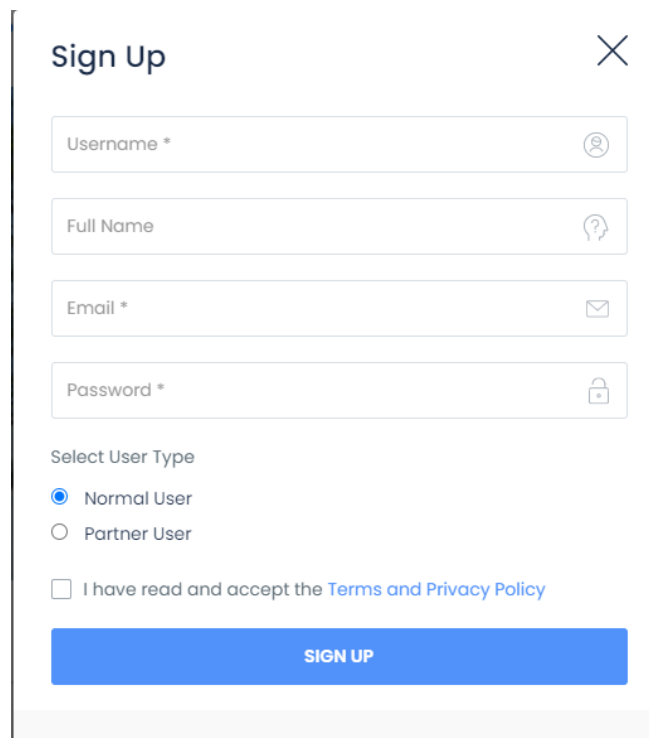
A screenshot of a 'Sign Up' dialog box. The dialog has a title 'Sign Up' and a close button (X) in the top right corner. It contains four input fields: 'Username *' with a person icon, 'Full Name' with a question mark icon, 'Email *' with an envelope icon, and 'Password *' with a lock icon. Below these fields is a section titled 'Select User Type' with two radio buttons: 'Normal User' (selected) and 'Partner User'. There is also a checkbox labeled 'I have read and accept the [Terms and Privacy Policy](#)'. At the bottom is a blue button labeled 'SIGN UP'.

Figure 5.2.5: Sign up page

Log In

There is a log in button on the top right corner of the home page. Users can see the log in page by clicking the log in button. Then users can see a dialog box. Those who are already registered on our website can easily log in to the website by giving their registered information. They have to give their user's name or email and password then have to press the login button. Then can also save their information by clicking remember me option. If any users forgot their password, then they can easily recover their password by clicking forgot password.

Log In

Email or Username

Password

LOG IN

Remember me [Forgot Password?](#)

or continue with

Do not have an account? [Sign Up](#)

Figure 5.2.6: Log in page

Forgot Password

From the "Log in" page, when user will click the "Forgot Password?" button then the page will be visible to the users and open a dialog box. Then after entering the registered mail a reset OTP will be giving to their mail. After entering the OTP users can easily add a new password for their user account.

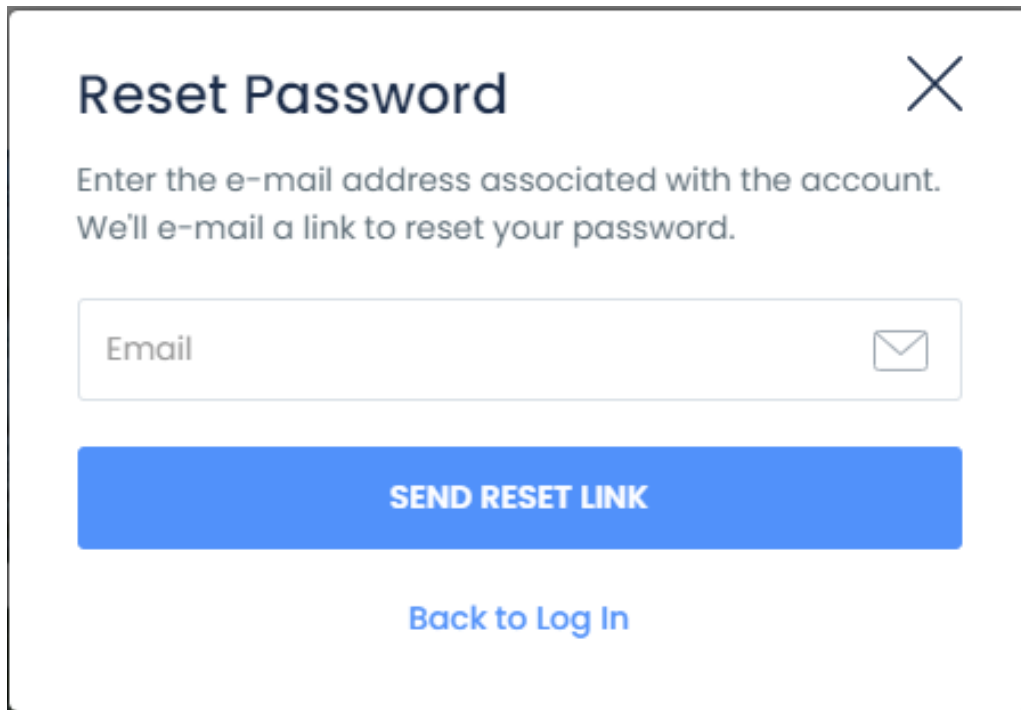
A screenshot of a 'Reset Password' form. The form has a title 'Reset Password' in the top left and a close button (an 'X' icon) in the top right. Below the title, there is a message: 'Enter the e-mail address associated with the account. We'll e-mail a link to reset your password.' Below this message is a text input field with the placeholder text 'Email' and an envelope icon on the right side. Underneath the input field is a large blue button with the text 'SEND RESET LINK' in white. At the bottom of the form is a blue link that says 'Back to Log In'.

Figure 5.2.7: Reset Password page

All Tours

From all Tours page users can see all available tours on our website. They can choose any one from then. They can see tour details, total duration of the tour, total money and everything. They can also search for tours. They can set their destination and suitable date. There is a more option from which users can select range of cost.

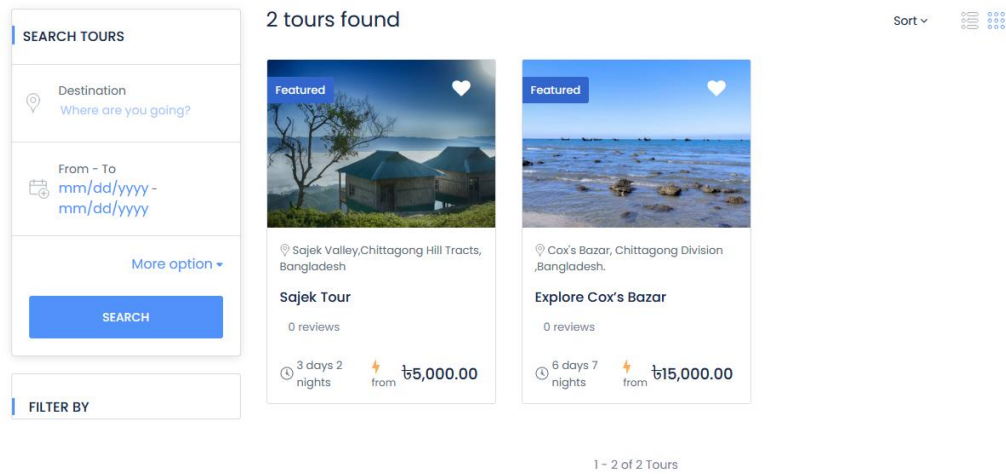


Figure 5.2.8: All Tours page

Sort

User can sort tour by selecting many options. They can select "New Tour", Price "Low to High" or "High to Low", Name "a-z" or "z-a".

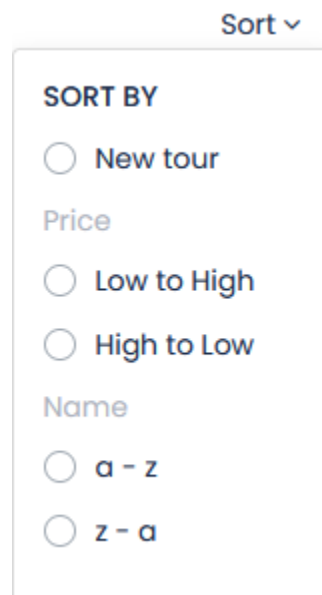


Figure 5.2.9: Sorting page

About Us

From About Us page users can know about our vision and our mission. Our vision is to serve the best user experience of our users and our mission is to create a user-friendly tour environment for everyone.

Our Team



Md. Mahade Hasan
Supervisor



Khalid Hasan
Team Lead



Tresa Rani Ghosh
Team Member

Figure 5.2.10: About Us page

Contact

From Contact page users can contact with us. They can send us any message. In Contact page there are a box where users can put their name and email. Then they can write us their desire question. Our team always ready to serve every user.

We'd love to hear from you

Send us a message and we'll respond as soon as possible

Message

SEND MESSAGE

Figure 5.2.11: Contact with Us page

FAQs

From FAQs page users can see frequently ask questions which are asked by all other users.

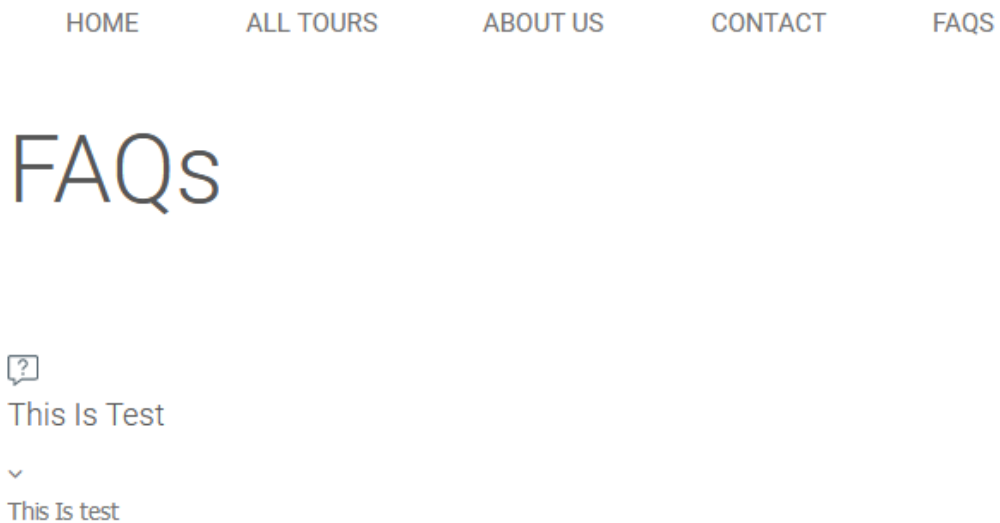


Figure 5.2.12: FAQs page

Order a Tour Package

If any user wants to order a tour package, then first of all he/she has to go to the All-Tour page. Then user can select his/her desired tour package. Then when he/she entered into the selected tour page he/she can see tour duration, tour type, group size, languages. Then if he/she wants to book it then they have to give date, adults quantity and children quantity. Then the user has to press Book now option. Then in the next page he/she can apply coupon if they have. Then the user can go to the "Proceed to Checkout" option. Then in the next page user has to fill up billing details which are First name, last name, company name, county, street address, city, zip code, district, Email, phone. Then user can select payment method and then user can place the order.

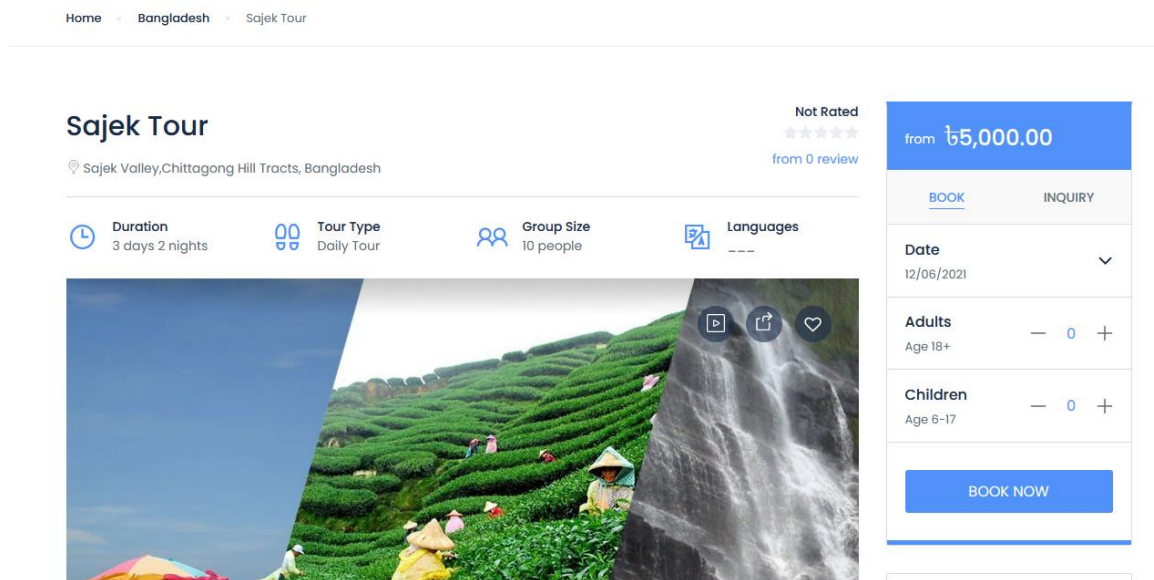


Figure 5.2.13: Order a tour section 1

Home > Cart

Cart items

✕ Tour ✕



Sajek Tour

Sajek Valley, Chittagong Hill Tracts, Bangladesh

Type tour: Daily Tour

Departure date: 12/17/2021

Duration: 3 days 2 nights

Booking Details

Adult: 1 x ₳5,000.00 → ₳5,000.00

Total amount: ₳5,000.00

₳5,000.00

Cart totals

Subtotal ₳10,000.00

Total **₳10,000.00**

[Proceed to checkout](#)

Figure 5.2.14: Order a tour section 2

Home > Checkout

Have a coupon? [Click here to enter your code](#)

Billing details

First name *

Khalid

Last name *

Hasan

Company name (optional)

Country / Region *

Bangladesh

Street address *

170

Apartment, suite, unit, etc. (optional)

Town / City *

dhaka

Your Booking

Sajek Tour

Sajek Valley, Chittagong Hill Tracts, Bangladesh



Sajek Tour

Sajek Valley, Chittagong Hill Tracts, Bangladesh



Subtotal ₳10,000.00

Total: **₳10,000.00**

Figure 5.2.15: Order a tour section 3

Postcode / ZIP (optional) District *

Dhaka ▼

Email address * Phone *

Pay Before Tour Start

Pay with cash before tour start

bKash

Rocket

Nagad

Your personal data will be used to process your order, support your experience throughout this website, and for other purposes described in our [privacy policy](#).

Figure 5.2.16: Order a tour section 4

Normal User Dashboard

From Normal User's Dashboard, a user can see personal information. Like username, e-mail, PayPal e-mail, phone number, about yourself. User can edit them easily. User can change his profile picture also. He can set his location on the website by giving home airport, address, city, state, zip code, county. They can change their password also. Users can see booking history from dashboard page. In booking history page user can see all the bookings, pending payment, processing tours, on hold tours, completed tours, cancelled tours, refunded tours and failed. User can also like a tour package which will be added in his/her whitelist. After that user can easily select them from whitelist page. There is also an Inbox Notification page for user. Where user can see all the notification. If user want to log out then it is very easy because there is a log out page in user's dashboard. User can also go to the Homepage from dashboard page.

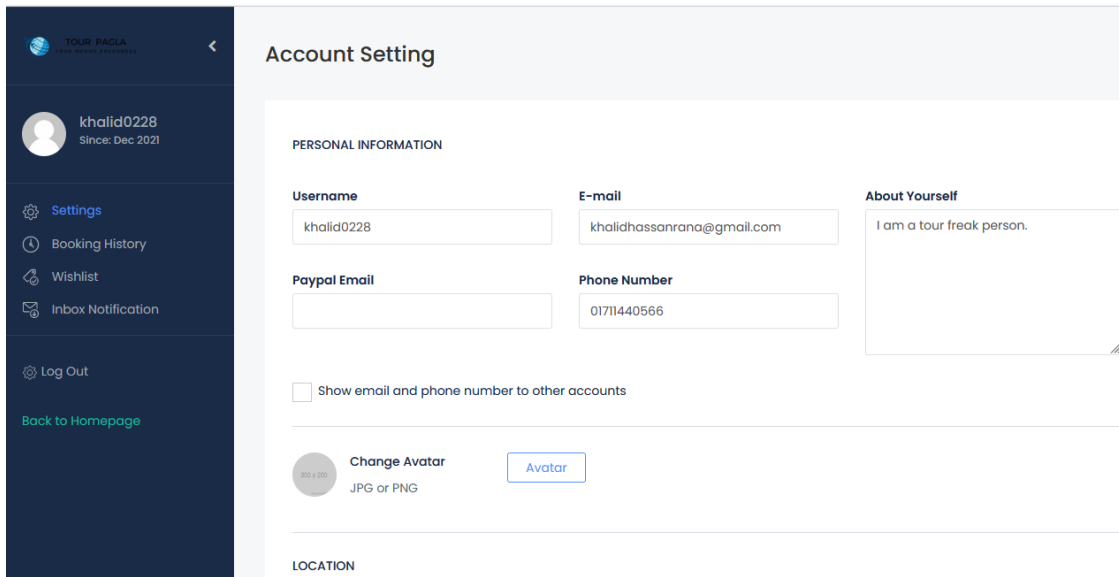


Figure 5.2.17: Normal User Dashboard section 1

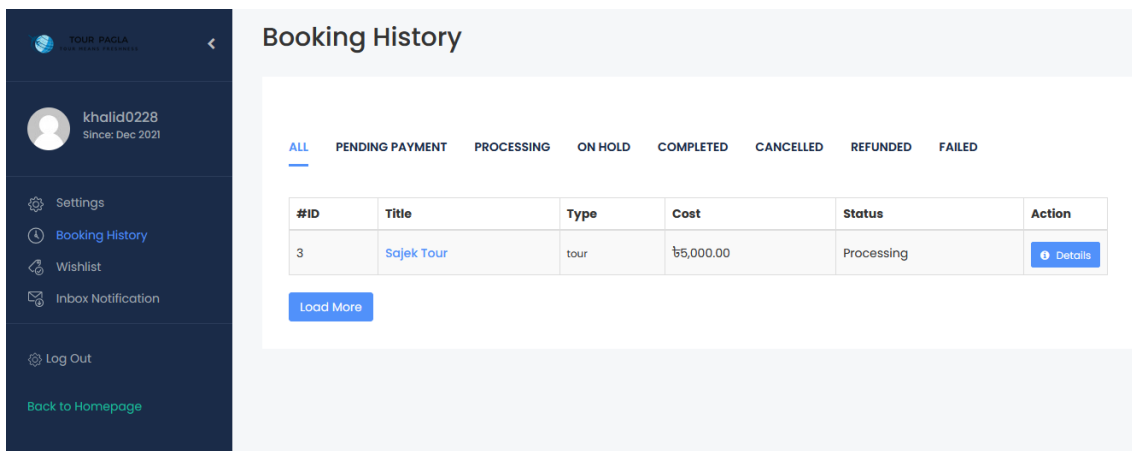


Figure 5.2.18: Normal User Dashboard section 2

Partner User Dashboard

From partner user dashboard a partner user can see tour statistics off his/her own. A partner user can see net earnings of current month, balance available, and net earnings. A partner user can also change his/her personal information also. A partner user can also book any

tour packages for himself/herself. All the facilities which can access by a normal user can also access by a partner user. But a partner user can also give any tour packages. First, He/she have to give tour name and tour description. Then he/she can add tour info, photos, price and locations of the tour. He/she has also the ability to take booking tours from normal users. Then he/she can also monitor Tours booking details. A partner user can withdraw his/her profit by Bank transfer, Papal, stripe. Partner user must have verification, travel certificate and all other valid id cards but for a partner user first of all a user have to take permission. For this he/she have to give a request for partner account then our admin team will accept it.

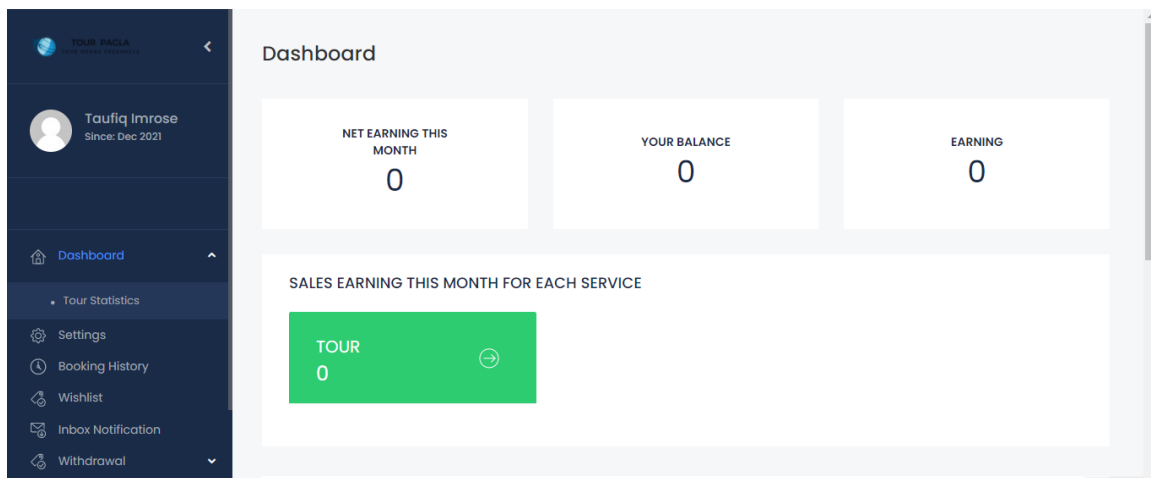


Figure 5.2.19: Partner User Dashboard section 1

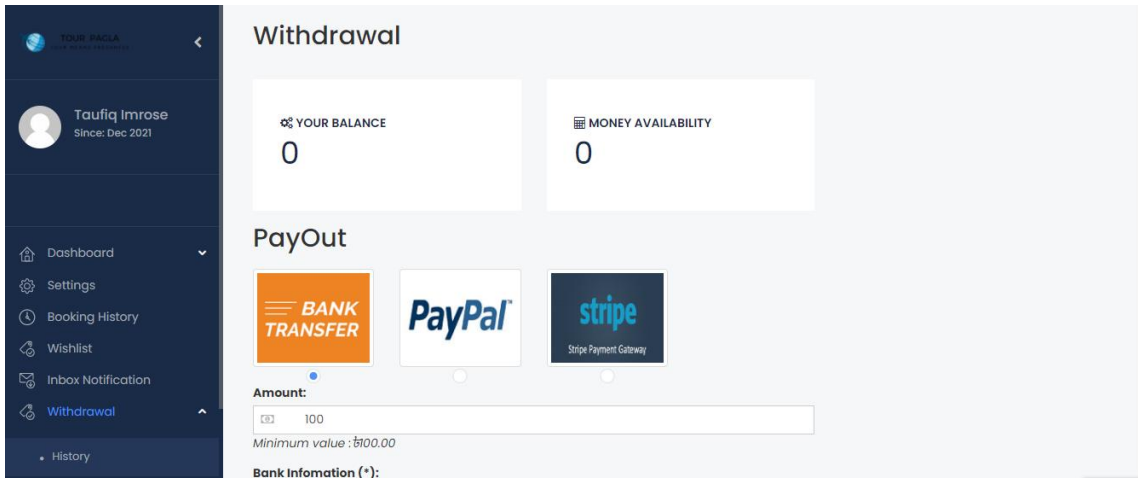


Figure 5.2.20: Partner User Dashboard section 2

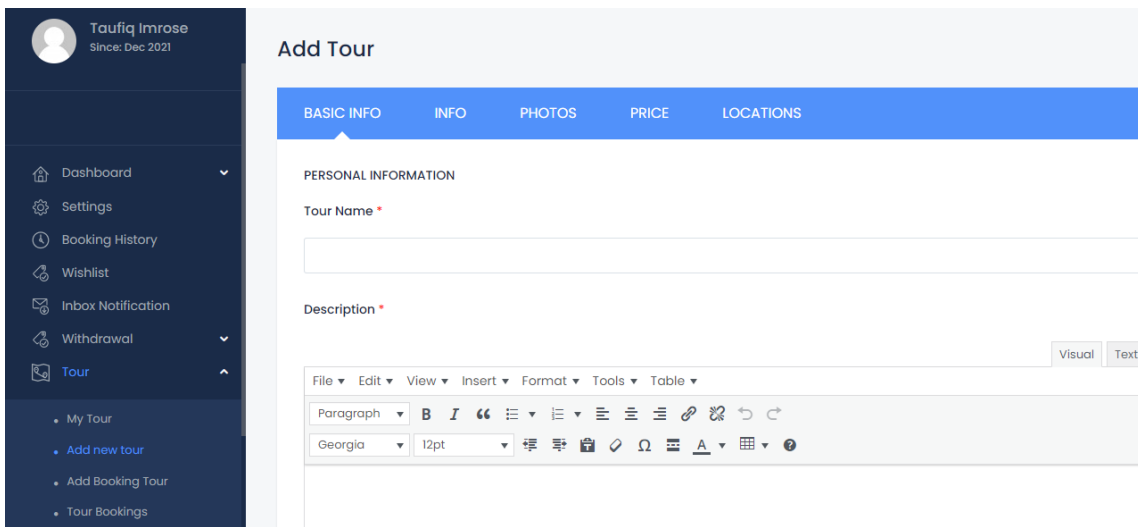


Figure 5.2.21: Partner User Dashboard section 3

Customer Information

Booker ID:
6 - taufiqimrose7@gmail.com

Customer First Name (*): Sadia
Customer Last Name (*): Binte Shafique

Customer Email (*): sadiabinteshafique45@gmail.com
Customer Phone (*): 01711440566

Customer Address:
Customer Address 2:

Customer City: State/Province/Region: ZIP code/Postal code:

Figure 5.2.22: Partner User Dashboard section 4

taufiqimrose7@gmail.com 01752962060

Personal identity card or passport

Name on card
[Input Field]

ID Card **Birthday on Card**
[Input Field] [Input Field]

Photos
[Select Images Button]
Maximum 5 images
Please select image

Travel Certificate

Company name **Email**
[Input Field] [Input Field]

Company address **Phone Number**
[Input Field] [Input Field]

Figure 5.2.23: Partner User Dashboard section 5

Admin Dashboard

When an admin will login to our website, he/she will see another view of our website. Admin can do everything on our website. Admin can give new posts and also can maintain all the category of the post. Admin can add new media to the library. Admin can add new pages and also can manage all pages on our website. Admin can see all comments and can give reply. Admin can add new locations on our website. Admin can add coupon for discount and can manage all coupons. Admin can manage contact forms of our website. He/she can add new contact and can integration.

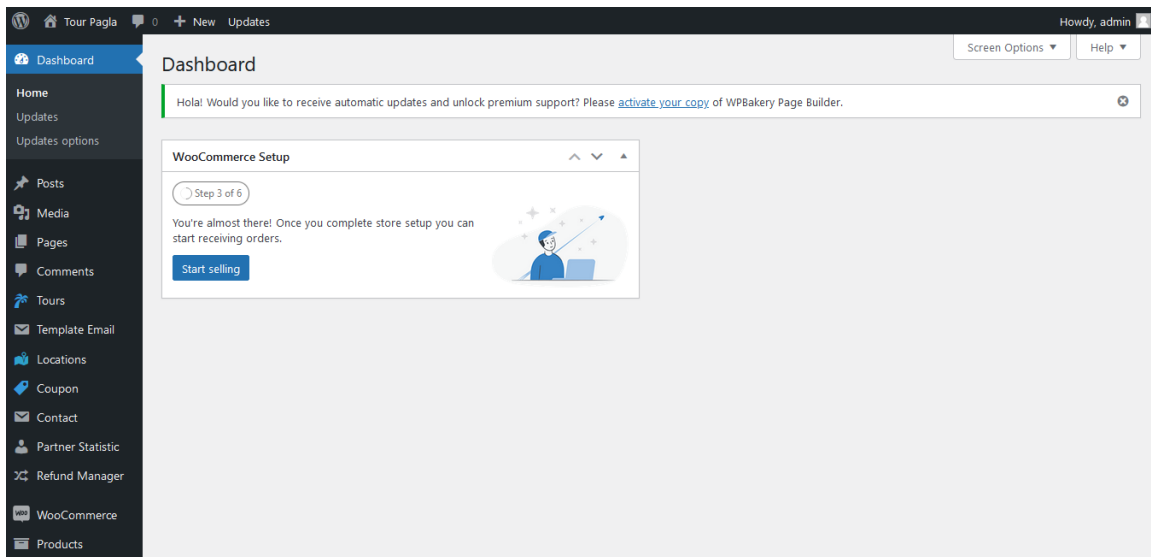


Figure 5.2.24: Admin Dashboard section 1

Admin can manage partner statistics. He/she can manage partner statistics, list partner, top partner, partner withdrawal. Admin can manage refund management. Admin can also manage products like all products, add new, categories, tags, attributes. Admin can also see Analytics like overview, products, revenue, orders, variations, categories, coupons, taxes, downloads, stock and settings. Admin can manage marketing side like overview and coupons. Admin can also manage theme settings like reports, extensions, product registration, theme notification, support, change log, quick install demo, system status, member packages, attributes, importer function, upgrade data, sync price form builder.

Admin can manage appearance like themes, customize, widgets, menus, header, background, theme editor. Admin can also install plugins. Admin can also manage user's profile. Admin can access tools like import, export, site health, export personal data, erase personal data, visual footer credit remover and scheduled actions. Admin can also manage settings like general, writing, reading, discussion, media, permalinks, privacy, etc.

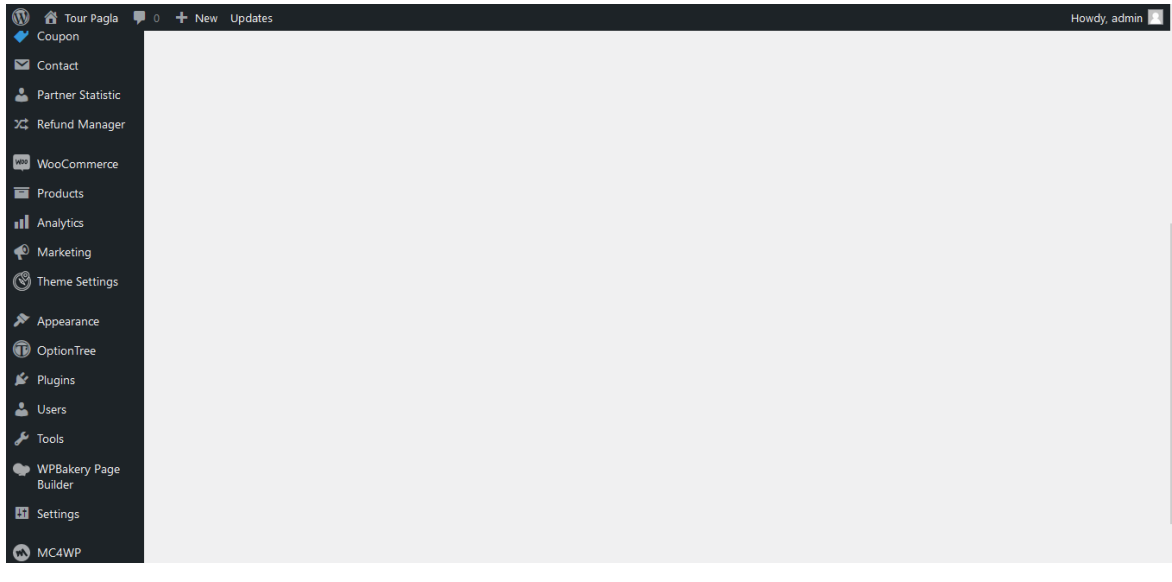


Figure 5.2.25: Admin Dashboard section 2

5.3 Testing Implementation

Testing is a method of verifying that a product meets expected requirements and that the product is free from defects. Several types of tests have been added to make sure everything is working as expected. The various test cases and their results are shown in Table 5.3.1

| Test Case | Test Input | Expected Outcome | Obtained Outcome | Pass/Fail |
|-----------------------|------------------------------------|--|--|-----------|
| 1. Normal User Login | Username and Password | Successfully Login | Successfully Login | Passed |
| 2. Partner User Login | Username and Password | Successfully Login | Successfully Login | Passed |
| 3. Admin Login | Username and Password | Successfully Login | Successfully Login | Passed |
| 4. View All Tours | Press ALL TOURS button | ALL TOURS page loaded successfully | ALL TOURS page loaded successfully | Passed |
| 5. View About Us | Press ABOUT US button | ABOUT US page loaded successfully | ABOUT US page loaded successfully | Passed |
| 6. View Contact Us | Press CONTACT US button | CONTACT US page loaded successfully | CONTACT US page loaded successfully | Passed |
| 7. View FAQs | Press FAQs button | FAQs page loaded successfully | FAQs page loaded successfully | Passed |
| 8. View Search Result | Give ADRESS, TIME, NUMBER OF GUEST | Search Result page loaded successfully | Search Result page loaded successfully | Passed |
| 9. View Eco Tourism | Press Eco Tourism button | Eco Tourism page loaded successfully | Eco Tourism page loaded successfully | Passed |

| | | | | |
|--|----------------------------------|---|---|--------|
| 10. View Long Trip | Press Long Trip button | Long Trip page loaded successfully | Long Trip page loaded successfully | Passed |
| 11. View Dashboard of Normal User | Press Dashboard button | Dashboard loaded Successfully | Dashboard loaded Successfully | Passed |
| 12. View Dashboard of Partner User | Press Dashboard button | Dashboard loaded Successfully | Dashboard loaded Successfully | Passed |
| 13. View Dashboard of Admin | Press Dashboard button | Dashboard loaded Successfully | Dashboard loaded Successfully | Passed |
| 14. View Booking History of Normal User | Press Booking History button | Booking History loaded Successfully | Booking History loaded Successfully | Passed |
| 15. View Wishlist of Normal User | Press Wishlist button | Wishlist loaded Successfully | Wishlist loaded Successfully | Passed |
| 16. View Wishlist of Partner User | Press Wishlist button | Wishlist loaded Successfully | Wishlist loaded Successfully | Passed |
| 17. View Inbox Notifications of Normal User | Press Inbox Notifications button | Inbox Notifications loaded Successfully | Inbox Notifications loaded Successfully | Passed |
| 18. View Inbox Notifications of Partner User | Press Inbox Notifications button | Inbox Notifications | Inbox Notifications | Passed |

| | | | | |
|-------------------------------------|--|---------------------------------------|---------------------------------------|--------|
| | | loaded Successfully | loaded Successfully | |
| 19. ID Logout of Normal User | Press LOG OUT button | ID logout successfully | ID logout successfully | Passed |
| 20. ID Logout of Partner User | Press LOG OUT button | ID logout successfully | ID logout successfully | Passed |
| 21. ID Logout of Admin. | Press LOG OUT button | ID logout successfully | ID logout successfully | Passed |
| 22. Back to Homepage | Press Back to Homepage button | Homepage loaded Successfully | Homepage loaded Successfully | Passed |
| 23. View Book Tour | Select Date and Number of persons then press Book Tour button | Book Tour page loaded Successfully | Book Tour page loaded Successfully | Passed |
| 24. Place Order | Input Billing details and Payment method | Place Order successfully | Place Order successfully | Passed |
| 25. Send message for Contact | Input Name, E-mail and type Message then press the button SEND MESSAGE | MESSAGE SEND successfully | MESSAGE SEND successfully | Passed |
| 26. Change password for Normal User | Type CURRENT PASSWORD | Password change successfully | Password change successfully | Passed |

| | | | | |
|--|--|--|--|--------|
| | then type NEW PASSOWD 2 times and press CHANGE PASSWORD | | | |
| 27. Change password for Partner User | Type CURRENT PASSWORD then type NEW PASSOWD 2 times and press CHANGE PASSWORD | Password change successfully | Password change successfully | Passed |
| 28. Withdrawal from Partner User | Select amount then Bank information then press submit | Withdrawal successfully | Withdrawal successfully | Passed |
| 29. Withdrawal history from Partner User | Press History button | Withdrawal history loaded successfully | Withdrawal history loaded successfully | Passed |
| 30. Verification of Partner User | Press verification button | verification history loaded successfully | verification history loaded successfully | Passed |

5.4 Test Results and Reports

Test result was successful every time and also there can be some minor bug that can't always be exploited using tests but our team will always work for it.

Simple Unit test report summary is given at Figure 5.4.1

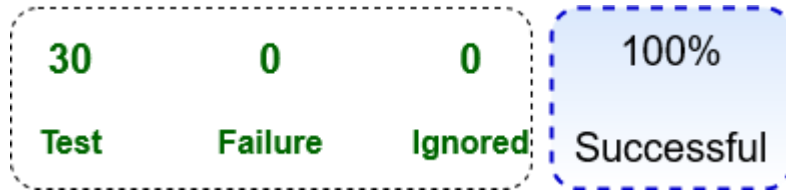


Figure 5.4.1: Unit Test Report

CHAPTER 6

IMPACT ON SOCIETY, ENVIRONMENT AND SUSTAINABILITY

6.1 Impact on Society

Ever since we were little, we've seen that when someone wanted to go somewhere, they had to take advice from different people. There were also various tour agencies who had to go to the office to gather different information. But our science and technology has improved so much that gadgets like smartphones are now available at very affordable prices. So almost everyone now has a smart phone. That's where our tour website comes in handy. The website can be accessed from any human at any device so they do not need to go anywhere directly to search. Which has made social life easier for people. Our society lags far behind the people of the Western in the use of technology. The internet can be a way to reduce this problem. Since we need internet to login to our website and see updates of various things, everyone has to use internet from time to time. As a result, they have to buy data package, device configuration etc. In other words, by doing this ordinary people can easily solve the basic problems that they sometimes face.

6.2 Impact on Environment

Our website is completely eco-friendly. Although it may have a small effect on the environment. For example, we can say that we need a smart device like mobile, laptop to use our website and a smart device can cause environmental pollution if the e-garbage from the smart device is not used properly. So, if someone brings a smart device to use our website and does not recycle it, it can affect the environment. Moreover, we are also helping the environment through our website in various ways. When there was no online platform for tours and various package bookings, everyone had to go by vehicles to an agent. And the carbon dioxide that comes out of the vehicles pollutes the environment.

So, one day our website will help to save from the excess carbon dioxide and will make this world beautiful.

6.3 Ethical Aspects

There is nothing to worry about if we consider the moral aspect. Because we are using it only for the entertainment purpose of everyone. So, there will be no unethical action regarding our application. Also, the website is open source so that there is less chance of doing unethical or hurtful that could hurt anyone in any way.

6.4 Sustainability Plan

Information technology is being updated regularly and bringing new features and security measures. The technology we used in our project gets a big update after a few days. We built our website using the latest technology discovered at this time. Again, if there is a major update that could conflict with our existing code, then we need to update our website and make changes. This, website will be open source and other web technology enthusiasts will be able to work with us.

CHAPTER 7

CONCLUSION AND FUTURE SCOPE

7.1 Discussion and Conclusion

In our country, it was not possible to organize tours and to book any tour packages through online. Everyone had to work hard for gather information. This job was a time-consuming affair for everyone. This website has made the tour very easy for everyone and has made it easy for everyone to visit and stay in the place of their choice. The most important thing is that everyone is able to enjoy all the entertainment at the right price. Those, who are small entrepreneurs will be able to easily organize various tour packages to entertain the common people as well as benefit themselves. Before creating the website, everyone had to go to different places or call different agencies to get any types of news or update. They had to go to the office to book a tour which was time consuming. Many times, no tour package of their choice was available. Because of this they often had to cancel their tour plans. Many times, many would get upset for this subject. It was very difficult to find accurate information on the Internet. So, we've added all sorts of features to our website so that everyone can go to the right place at the right time. We believe that our website will be very successful for everyone. Everyone's time will be saved. There, is no cost for our website to get any information and if anyone accepts various tour packages through our website then they will get it accurate price. So, everyone will have a good experience using our website. Our admin team will always help to update the website and fix various bugs.

7.2 Scope for Further Developments

The website is primarily designed for businesses that gives information about different places, look tour packages, book different tour packages, and upload different types of tour packages. Gradually we are adding a lot more options for everyone. Although we already have a lot of features, there is always room for improvement. We will work in future to ensure that transport booking, hotel booking, local transport booking can be done through

our website. We have already discussed that our website can be accessed from any platform. Our, team is always ready to work on the backend and front end of the server. So that no user ever gets in ant trouble. We, have the opportunity to ask a variety of questions and to rate everyone. If anyone will give us any interesting ideas then we will implement it in our website. In this way we can easily know what more changes need to be made in the future. As a result of taking different opinions of different people, a lot of important information will come out. We must give priority to those whose opinions are informative. We have created this website with the help of latest and highest technology. This can be a great opportunity for everyone to make the tour more enjoyable.

REFERENCE

- [1] What are System Requirements Specifications, available at <<<https://www.inflectra.com/ideas/topic/requirements-definition.aspx#:~:text=What%20is%20a%20System%20Requirements,a%20system%20or%20software%20application>>>, last accessed on 24-09-2021 at 11.30PM.
- [2] Agile SDLC available at <<<https://mlsdev.com/blog/agile-sdlc>>>, last accessed on 12-10-2021 at 10.35PM.
- [3] What is an Entity Relationship Diagram (ERD), available at <<<https://www.smartdraw.com/entity-relationship-diagram/>>>, last accessed on 23-10-2021 at 11.50PM.
- [4] Use case diagram, available at <<https://en.wikipedia.org/wiki/Use_case_diagram#:~:text=A%20use%20case%20diagram%20at,which%20the%20user%20is%20involved>>, last accessed on 26-10-2021 at 09.45PM.
- [5] Logical Schema, available at <<https://en.wikipedia.org/wiki/Logical_schema#:~:text=Logical%20data%20models%20represent%20the,they%20relate%20to%20one%20another>>, last accessed on 27-11-2021 at 10.45PM

Draft_1

ORIGINALITY REPORT

| | | | |
|------------------|------------------|--------------|----------------|
| 15% | 13% | 1% | 8% |
| SIMILARITY INDEX | INTERNET SOURCES | PUBLICATIONS | STUDENT PAPERS |

PRIMARY SOURCES

| | | |
|----------|--|---------------|
| 1 | Submitted to Daffodil International University Student Paper | 4% |
| 2 | dspace.daffodilvarsity.edu.bd:8080 Internet Source | 2% |
| 3 | valls.home.cern.ch Internet Source | 2% |
| 4 | www.scribd.com Internet Source | 1% |
| 5 | Submitted to The Robert Gordon University Student Paper | 1% |
| 6 | Submitted to TechKnowledge Student Paper | <1% |
| 7 | ethesis.nitrkl.ac.in Internet Source | <1% |
| 8 | Submitted to American Intercontinental University Online Student Paper | <1% |
| 9 | Submitted to Middle East College of Information Technology | <1% |