

SANTA CLAUS E-COMMERCE SYSTEM

BY

Hridoy Chandra Karmakar
ID: 183-15-2249

Sanzida Tahsin Sumaya
ID: 183-15-2305

This Report Presented in Partial Fulfillment of the Requirements for the
Degree of Bachelor of Science in Computer Science and Engineering.

Supervised By

Aliza Ahmed Khan
Lecturer
Department of CSE
Daffodil International University

Co-Supervised By

Fatema Tuj Johora
Lecturer
Department of CSE
Daffodil International University



DAFFODIL INTERNATIONAL UNIVERSITY
DHAKA, BANGLADESH

APPROVAL

This Project/internship named "Santa Claus E-Commerce System", is presented by Hridoy Chandra Karmakar, ID No: 183-15-2249, and Sanzida Tahsin Sumaya, ID No: 183-15-2305 to the Department of Computer Science and Engineering, Daffodil International University has been accepted as satisfactory for the partial fulfillment of the requirements for the degree of Bachelor of Science in Computer Science and Engineering and approved as to its style and contents. The presentation has been held on 12.09.2022.

BOARD OF EXAMINERS



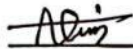
Dr. S M Aminul Haque
Associate Professor & Associate Head
Department of Computer Science and Engineering
Faculty of Science & Information Technology
Daffodil International University

Chairman



Mr. Abdus Sattar
Assistant Professor
Department of Computer Science and Engineering
Faculty of Science & Information Technology
Daffodil International University

Internal Examiner



Al Amin Biswas
Senior Lecturer
Department of Computer Science and Engineering
Faculty of Science & Information Technology
Daffodil International University

Internal Examiner



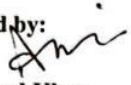
Dr. Dewan Md. Farid
Professor
Department of Computer Science and Engineering
United International University

External Examiner

DECLARATION

We thusly announce that this task has been finished by us under the management of Aliza Ahmed Khan, Lecturer, Department of CSE Daffodil International University. We likewise proclaim that neither this task nor any piece of this undertaking has been submitted somewhere else for the honor of any degree or recognition.

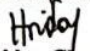
Supervised by:


Aliza Ahmed Khan
Lecturer
Department of CSE
Daffodil International University

Co-Supervised by:

Fatema Tuz Johora
Lecturer
Department of CSE
Daffodil International University

Submitted by:


Hridoy Chandra Karmakar
ID: 183-15-2249
Department of CSE
Daffodil International University


Sanzida Tahsin Sumaya
ID: 183-15-2305
Department of CSE
Daffodil International University

©Daffodil International University

iii

ACKNOWLEDGEMENT

We, most importantly, express our true thanks and appreciation to Almighty Allah for His heavenly gift which empowered us on this venture.

We are extraordinarily grateful and wish our most significant commitment to Aliza Ahmed Khan, Senior Lecturer, Department of CSE Daffodil International University, Dhaka. Start to finish data and solid interest of our manager in the field of "Site engineering and Development" to do this errand. His boundless steadiness, insightful direction, reliable encouragement, consistent and excited oversight, supportive responses, significant direction, and examining various minor drafts and changes at all stages made it possible to convey this undertaking to the end.

We should offer our most significant thanks to the administrator, co-chief, and the Head of the CSE division for their generous assistance with the affirmation of our endeavor, too in regards to the next faculty and staff of the CSE part of the Daffodil International University.

We should thank our entire course mate at Daffodil International University, who took part in this discussion while completing crafted by the errand.

Finally, we ought to perceive with due respect the reliable assistance and patients of our people.

ABSTRACT

Santa Claus is the framework to deal with an online business. After effectively signing in, the client can go to the Home page with the Option. The primary concern of the improvement of this framework is to help one make a shock. We resemble Santa Claus. The people who might not contact their spatial individual in spatial time, we at any point generally prepared to arrive at bliss in time. We are surprised at birthday events, commemorations, and so on. Incorporates The items we likewise enliven gifts, give cake to make the second more spatial. We additionally dispatch your gift. In the proposed framework, the client can look for a menu of his decision as per the cost range and the item class and afterward can arrange an item.

This framework sets the menu on the web and clients can arrange it effectively with the snap of a mouse.

TABLE OF CONTENTS

CONTENTS	PAGE
Approval	ii
Declaration	iii
Acknowledgement	iv
Abstract	v
CHAPTER	
CHAPTER 1: INTRODUCTION	1-2
1.1 Introduction	1
1.2 Objective	1
1.3 Motivation	2
1.4 Expected Outcome	2
CHAPTER 2: BACKGROUND STUDY	3-4
2.1 Background of the project	3
2.2 Challenges	4
CHAPTER 3: REQUIREMENT OF SPECIFICATION	5-11
3.1 Activity Diagram	5-7

3.2 Requirement analysis	8
3.3 Use case modeling and description	9
3.4 Design requirement	10-11
CHAPTER 4: DESIGN SPECIFICATION	12-25
4.1 Front end design	12
4.2 Back-end design	12
4.3 Implementation requirements	13-23
CHAPTER 5: TESTING AND IMPLEMENTATION	26-27
5.1 Database Implementation	26
5.2 Front End Implementation	26
5.3 Testing Implementation	26-27
CHAPTER 6: IMPACT ON SOCIETY, ENVIRONMENT SUSTAINABILITY	28
6.1 Impact on Society	28
6.2 Impact on Environment and Sustainability	28
CHAPTER 7: CONCLUSION AND FUTURE SCOPE	29
6.1 Conclusion	29
6.2 Scope of further development	29

REFERENCE:

30

LIST OF FIGURES:

FIGURES	PAGE NO
Figure 3.1.1 Activity Diagram	5
Figure 3.1.1 Activity Diagram	6
Figure 3.1.1 Activity Diagram	7
Figure 3.1.3 Use Case Diagram	9
Figure 4.3.1: XAMPP server	13
Figure 4.3.2: Initialize Laravel development server	14
Figure 4.3.3: Santa Claus Homepage	14
Figure 4.3.4: E-commerce page interface	15
Figure 4.3.5: Login view	15
Figure 4.3.6: Registration view	16
Figure 4.3.7: User personal order	16
Figure 4.3.8: User add to cart interface	17
Figure 4.3.9: Order page	17
Figure 4.3.10: User offers a view	18
Figure 4.3.11: Contact page	18
Figure 4.3.12: User Courier Gift	19
Figure 4.3.13: About us page	19
Figure 4.3.14: Administrator authentication checking page	20
Figure 4.3.15: Administrator Option view	20

FIGURES	PAGE NO
Figure 4.3.16: Administrator order view	21
Figure 4.3.17: Administrator update order	21
Figure 4.3.18: Administrator user list view	22
Figure 4.3.19: Administrator inserts product	22
Figure 4.3.20: Administrator product view	23
Figure 4.3.21: Administrator update product	23
Figure 4.3.22: Administrator cancel offers	24
Figure 4.3.23: Administrator Contact view	24
Figure 4.3.24: Administrator view couriers	25

LIST OF TABLES:

TABLES	PAGE NO
Table: 3.2: Requirement analysis	8
Table 5.3: Testing report	27

CHAPTER 1

Introduction

1.1 Introduction

The Santa Claus webpage is a web-based business website that spots orders and showed up at one present to their remarkable one in an outstanding time. We get the point of view from Santa to make the site. St Nick Claus, a mind-blowing figure who is the customary ally of Christmas in the United States and various countries, conveys presents to youths. His notable picture relies upon customs connected with Saint Nicholas, a fourth-century Christian heavenly individual. Father Christmas fills the work in various European countries. On Christmas Eve he stacks his sled with toys and zooms all around the planet, drawn by eight reindeer, stopping at each youngster's home; he slides down the smokestack stack and leaves the presents, resuscitating himself with the milk and treats left for him by the family's adolescents. We work like Santa. One can orchestrate gifts from our site. We are reached to gift their gift at their given time and given date. We moreover courier clients gift things in their given time and given date. In light of everything, clients need to finish off construction. Our gathering accumulate their gift and showed up at their gift date and in time. Clients can add rapping, cake, and bloom to make the celebration more outstanding.

1.2 Objective

This web-based Santa Claus project intends to be created and brought to showcase for most extreme use and to make a road across the web where clients can get to our server and make a choice of any items, they wish and afterward pay on the Internet. are the objectives this would bring:

- To create a simple to-utilize online connection point where clients can look through different kinds of gifts and make shock their spatial one in a spatial second.
- Clients additionally make a shock with their gift through our site.

- To furnish clients with all the different accessible gift classifications they can browse and from which to pick.
- This will give a cordial climate among the client and worker, consequently expanding the effectiveness of the gift requesting framework.
- We likewise give spatial proposition and markdown.
- Client can undoubtedly contact with administrator.
- To make one grin to arrive at their gift.
- Make the second more spatial by adding cake, enrichment, and blossom.
- Administrator can without much of a stretch control the entire cycle

1.3 Motivation

In some cases, one can not arrive at their unique one in spatial time. It makes distance the connection. He/she likewise be miserable for the explanation. Our task is produced using that rationale. Shock and gift are demonstrated their worth and diminish the distance. The extraordinary one can know their worth and make the second more joyful. Shocks and gifts mean a lot to a relationship. In any case, consistently one can not arrive at their unique one at an exceptional time. We are generally prepared to help this sort of individual. We are getting the thought from Santa. We as a whole have some familiarity with Santa. On Christmas Eve he stacks his sled with toys and zooms all over the planet, drawn by eight reindeer, halting at every kid's home; he slides down the fireplace and leaves the presents, reviving himself with the milk and treats left for him by the family's youngsters. We work like Santa. The people who can not contact their extraordinary individual in an exceptional time, are generally prepared to arrive at satisfaction in time. We are surprised at birthday celebrations, commemorations, and so on. Incorporates The items we additionally brighten gifts, give cake to make the second more exceptional. We additionally dispatch your gift. In the proposed framework, the client can look for a menu of his decision as per the cost range and the item class and afterward can arrange an item

1.4 Expected Outcome

Through our use of the Santa Clause website system, we have developed a way in which consumer sellers can systematically play a role in achieving the following expected results:

- Diminish the board costs
- Creating business relations
- Giving a special client experience
- Expanding the number of steadfast clients
- Supporting the productivity of administrations
- Expanding deals
- Creating pertinent objective
- Make individuals shock
- Reason of one grin in their spatial second

CHAPTER 2

Background

2.1 Background of the project

The Santa Clause is one of the newest services that provides surprises and gifted. Those who can not reach their special one, we always ready to reach happiness.

Through this site, one can arrange gifts for their exceptional ones. They can add cake, and rapping with their gift thing. Clients can likewise add to the truck for their future orders. The client can see their orders. We have likewise an embellished page. We have an about us page. There is likewise a contact page for a client can contact an administrator. The client can dispatch their own gift through our site. Administrators have some control over the entire site. Administrators can add items, Edit items, and Cancel items. The administrator can add a proposition and drop the request. The administrator can see clients who utilize the site. The administrator can see requests and change request status. The administrator can view and replay client contact. The administrator can see dispatch things.

This system greatly simplifies the ordering process for both the customer and the E-commerce site. Even at the end of the site, the system relieves the workload enormously, since the entire order acceptance process is automated. Until recently, most of these supply orders were placed over the phone.

2.2 Challenges

- Build a streamlined yet attractive web system that will appeal to the buyer.
- Maintaining the security of the database is also a crucial part of this project.
- Make sure the user registration system is working properly.
- Interruption of the unauthorized visit to the administration panel.
- Maintain high security in transactions.
- guarantee original and good quality food

CHAPTER 3

Requirement of specification

3.1 Activity Diagram

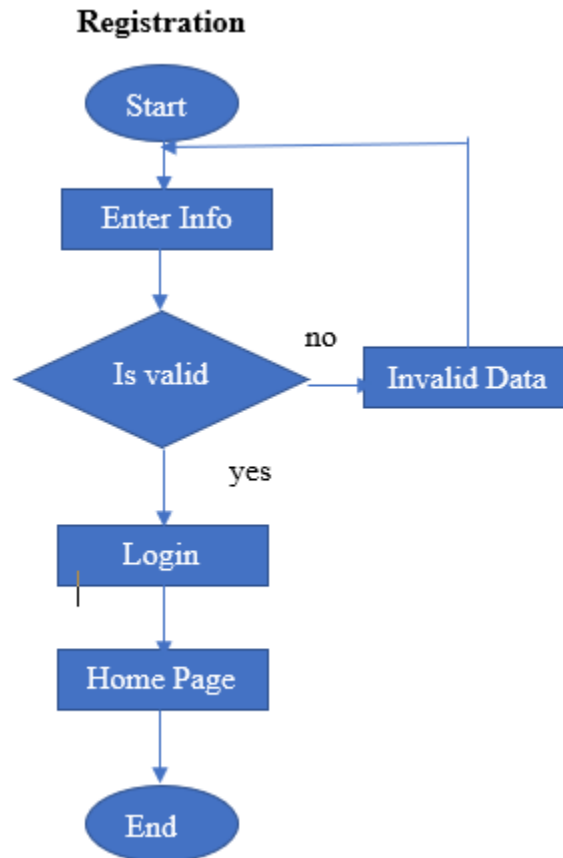


Figure: 3.1.1: Activity Diagram

In figure: 3.1.1, the User will enter all the information which is required for registration. If the information is valid then the user can log in correctly or else it will go back to the registration page.

3.1 Activity Diagram

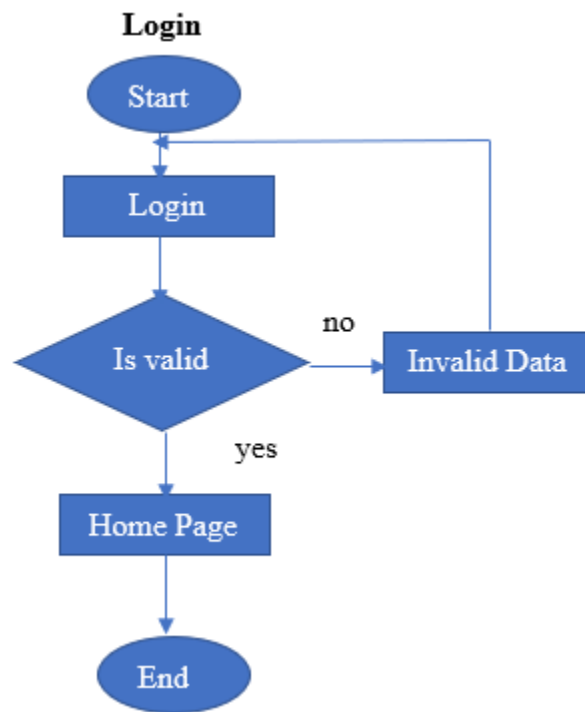


Figure: 3.1.2: Activity Diagram

In figure: 3.1.2, After effective enlistment, the client will enter the email and secret word which is expected for login. On the off chance that the data is substantial, the client can sign in accurately or, more than likely it will return to the login page.

3.1 Activity Diagram

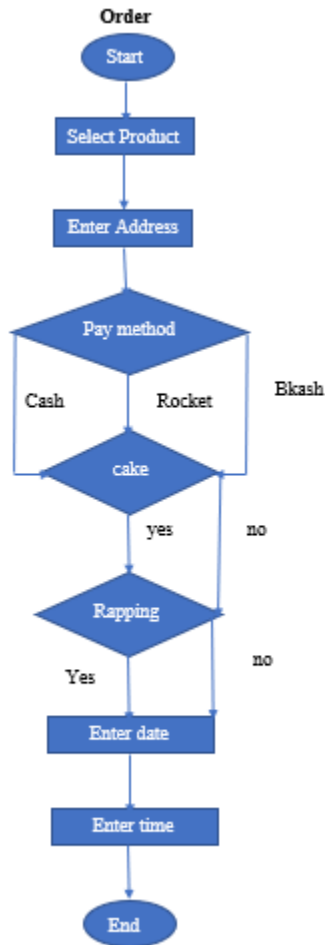


Figure: 3.1.3: Activity Diagram

In figure: 3.1.3, the User will enter all the information which is required for order placing. If the information is valid then the user will get the product.

3.2 Requirement Analysis

In our framework, there are a few necessities that are expected for utilizing this framework. Some of them are given underneath in table 3.2:

Table 3.2: Requirement analysis

Serial No	Requirement name	Requirement Analysis
01	Administrator Log in	To change any stock of the site, the head ought to be endorsed in with an email and mystery state.
02	Customer Registration	Customer needs to register to the site before placing an order of an item,
03	Customer Login	Currently enlisted client requirements to sign in with his/her enrolled email and secret key.
04	Clients delivering address	For placing order, customer needs to give his/her delivery address appropriately

3.3 Use case modeling and description

Use case frames are used to gather the necessities of a structure including inward and outer impacts. The utilization case outline for our framework is displayed beneath.

Entertainers: - Admin, User

The related use cases for these entertainers are: -

Head: login, log out, view demand, modify the status, add a suggestion, install a thing, change a thing, delete the thing, wipe out the offer, view client message, view dispatches.

User: enrollment, Login, logout, add to the truck, oversee truck, request, view item, view request, eliminate.

Santa Claus Web site Use Case Diagram

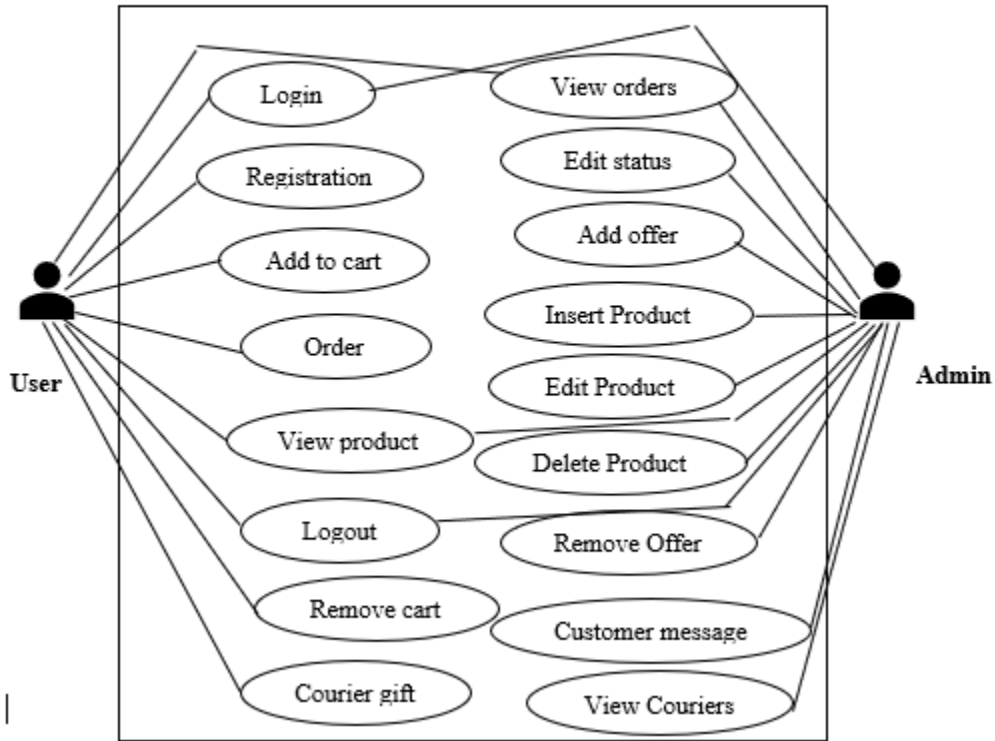


Figure: 3.1.3: Use Case Diagram

3.4 Design Requirements

Our framework is a unique site. Some web programming dialects are utilized to foster the front end and back finish of our website. We utilized HTML, CSS, BOOTSTRAP, and PHP LARAVEL structure for creating sites. We utilized HTML, CSS, and BOOTSTRAP for the frontend plan, On the other hand, a notable programming language LARAVEL is utilized to create the backend. Mysql data set server assists here with making it dynamic.

HTML:

Contingent upon what sort of additional room you need to make in your HTML code on a page, there are various ways you can do this. A wide range of ways to deal with making additional room utilizing HTML and CSS are canvassed in the accompanying segments.

CSS:

CSS is the language to address the presentation of site pages, including assortments, course of action, and message styles. CSS is sans HTML and can be used with any XML-based markup language. It is used to make page search externally captivating. Visual drawing in quality is fundamental for a site.

Bootstrap:

Highlights. Bootstrap is an HTML, CSS, and JS library pointed toward making it simple to construct educational site pages (rather than web applications). The primary justification for remembering it for a web project is to apply variety, size, textual style, and design determinations to that venture.

PHP:

There are different old estimations on the Web that lead new PHP clients off course, spreading shocking practices and temperamental code. PHP: The Right Way is an easy-to-examine, fast reference for PHP's well-known coding standards, hyperlinks to genuine educational activities across the Web, and what individuals make a point to be exceptional practices at the normal time. There is no standard method for applying PHP. This website page centers to familiarize new PHP makers with specific subjects which they'll present at absolutely no point in the future sort out till it's miles too far to turn back and centers to present virtuoso specialists a couple of clean contemplations on the one subject they've been achieving for a seriously prolonged stretch of time while never reconsidering. The website could even as of now at absolutely no point in the future teach you in regards to the one's equipment to apply, yet as a choice gives pointers to various decisions, while potentially figuring out the assortments in methodology and use-case. This is a living record and could keep you alert to date with extra supportive experiences and models as they end up open. used electronic eating place locales with significant measures of traffic. Secure locales for portion. Email net site working with stages. Informational collection control and social stages. Content Management Systems.

Laravel:

Laravel is a web utility improvement framework. It is not difficult to learn. Similarly, the Laravel structure is not difficult to carry out and its accentuation is fundamental. We trust improvement to be an enchanting, inventive experience. Laravel licenses us to meet those necessities and attempt to eliminate the hurt from the advancement with the aide of working with really to-be-expected spot liabilities used inside the majority of the net endeavors, alongside confirmation, coordinating, gatherings, and holding. Laravel pursues to make the improvement strategy a nice one for the fashioner without relinquishing utility handiness. Merry engineers make fine code. To this end, we have endeavored to facilitate the genuine fineness of what we've seen in different net frameworks, consolidating structures applied in different lingos, alongside Ruby on Rails, and ASP.NET MVC.

CHAPTER 4

Design specification

4.1 Front-end Design

The front-end of a project that can view users is called front-end design. It makes a website legible and understandable to users. Everything a user sees on a web page is called Front-end Design. The Front-End of a website is designed using languages such as HTML and CSS and BOOTSTRAP. It provides a means for users to communicate with the server.

The most important aspect of a website is the front-end design. A user interface that is both attractive and simple to use.

The user interface of a website not only attracts visitors but also makes it easy for them to engage with the site.

Our system's front end has been designed to be simple and straightforward to use. It assists the students in simply cooperating with the system.

4.2 Back-end Design

The back-end setup is the internal and predictable piece of a site. It is generally called the server-side arrangement. Back-end design helps make a site dynamic. It portrays how the Site should work. web security, development, and content of the site. The backend is the most tangled and huge piece of site improvement. The absolutely electronic system relies upon the back or server side. A back-end engineer necessities to oversee different tangled parts, for instance, confirmation, meeting, data endorsement, informational collection organization, data sharing, security, etc. We included PHP as the server site language to give each of the reasonings to our system. The Laravel structure is used to essentially manage the entire cycle. The MySQL informational collection is used to store our data and manage our system informational index.

4.3 Implementation Requirements

- The Backend of the system should be made using PHP, MySQL is the favored data set for keeping and dealing with every one of the information.
- MySQL is inclined toward data base for keeping and managing all of the data. Check all the structure safeguarded XSS (cross-site prearranging) assaults.
- For Developing and organizing pages we really want HTML and CSS. Implementing workable session management.
- Unapproved access expected to forestall in a legitimate manner bootstrap framework should be used in front-end design to make it better
- Carrying out serviceable meetings with the board.

Run XAMPP Server:

XAMPP is AN ASCII text record bundle created by Apache Friends. XAMPP programming bundle contains Apache dispersions for Apache server, MariaDB, PHP, and Perl. What's more, it's basically a nearby host or a local server. This neighborhood waiter deals with your own work area or compact PC. The usage of XAMPP is to actually look at the buyers or your site prior to transferring it to the remote net server. This XAMPP server programming gives you fitting environmental factors for testing MYSQL, PHP, and Apache.

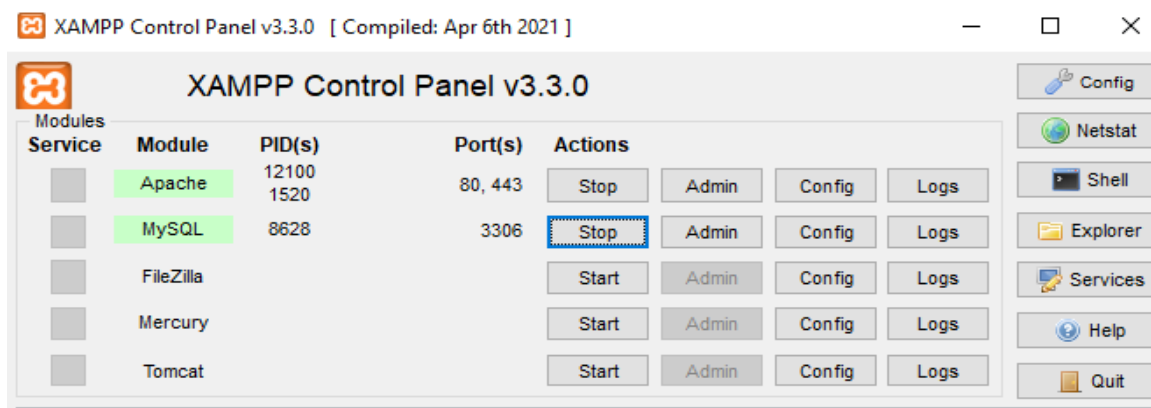


Figure 4.3.1: XAMPP server.

Create Database through MySQL

Go to <http://localhost/phpmyadmin/> and create a new database by using the following Query -`CREATE DATABASE <DATABASENAME>`

Initialize Laravel development server

To run our project based on the Laravel framework in our local host, we need to initialize it by executing the following bash command in figure 4.3.2.

```
C:\Windows\System32\cmd.exe - php artisan serve
Microsoft Windows [Version 10.0.19044.1826]
(c) Microsoft Corporation. All rights reserved.

C:\xampp\htdocs\ecommerce>php artisan serve
Starting Laravel development server: http://127.0.0.1:8000
[Thu Jul 21 20:58:49 2022] PHP 8.0.3 Development Server (http://127.0.0.1:8000) started
```

Figure: 4.3.2: Initialize Laravel Development server

It will find the project on <http://127.0.0.1:8000>

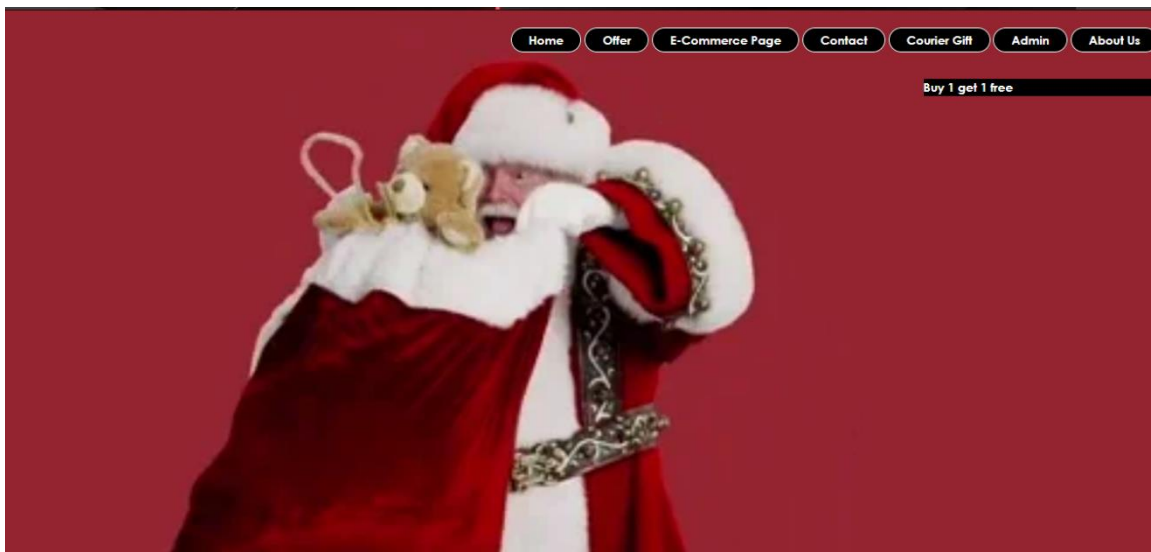


Figure: 4.3.3: Santa Claus home view

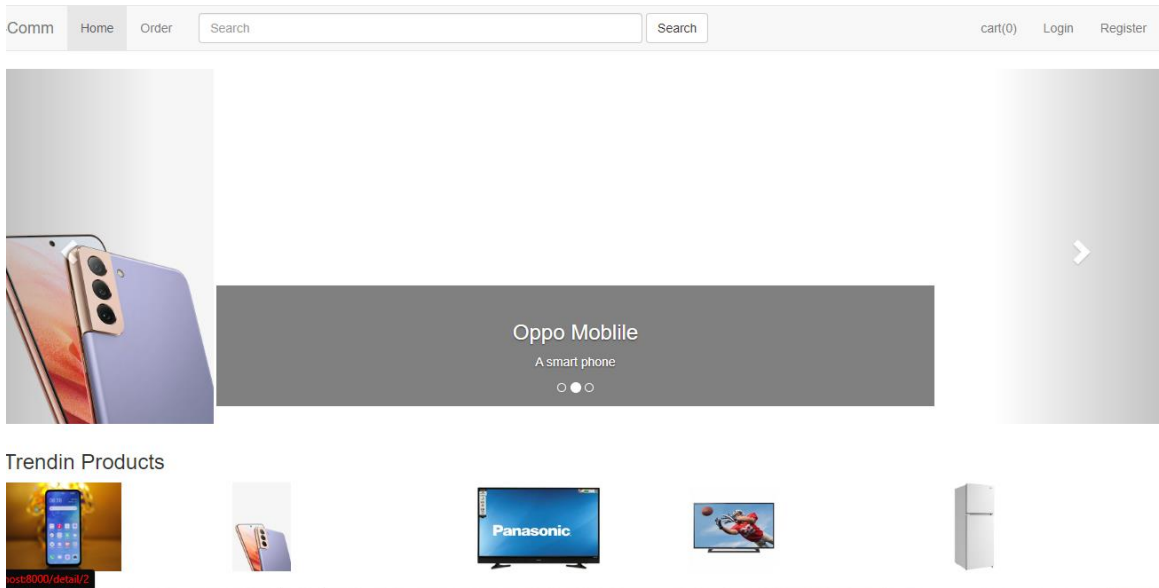


Figure: 4.3.4: E-commerce page interface

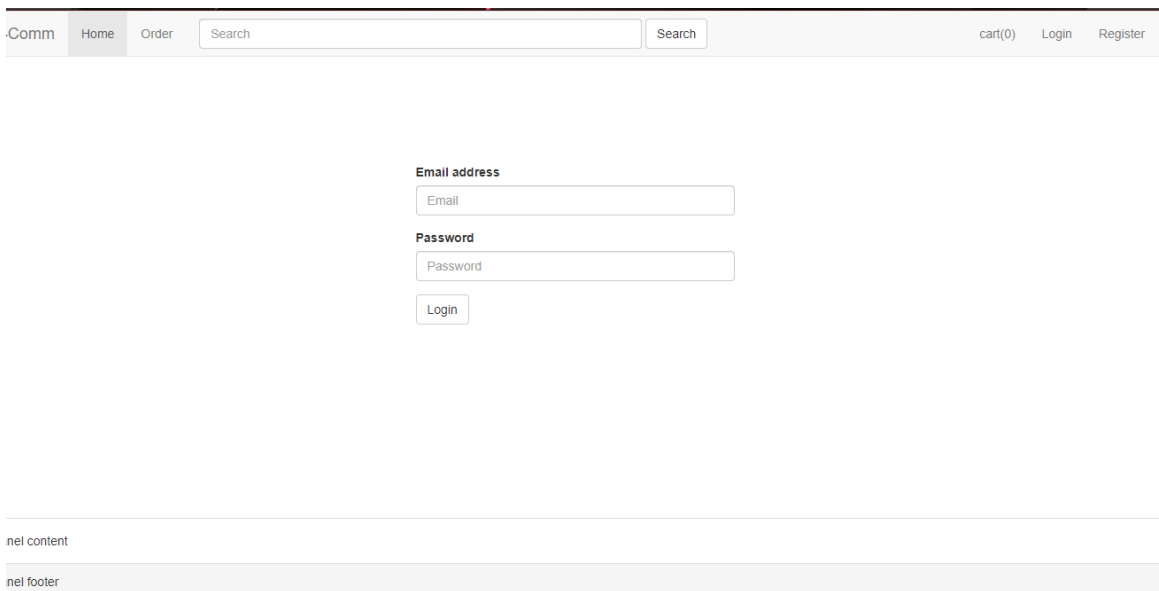


Figure: 4.3.5: Login page

E-Comm Home Order Search Search cart(0) Login Register

User Name

Email address

Password


Panel content

Panel footer

Figure: 4.3.6: Registration view

E-Comm Home Order Search Search cart(0) hridoy

My Orders

 **Name: Lg Fridge**
 Delivery Status: Done
 Address: savar
 Payment Status: done
 Payment Method: cash
 Date: 11 jan
 Time: 12.00 pm
 Cake: Yes
 Decoration Gift with rapping and flower: Yes


 **Name: Lg Mobile**
 Delivery Status: pending
 Address: hiho
 Payment Status: pending
 Payment Method: cash
 Date: 20 feb
 Time: 12.00 pm

Figure: 4.3.7: User personal order

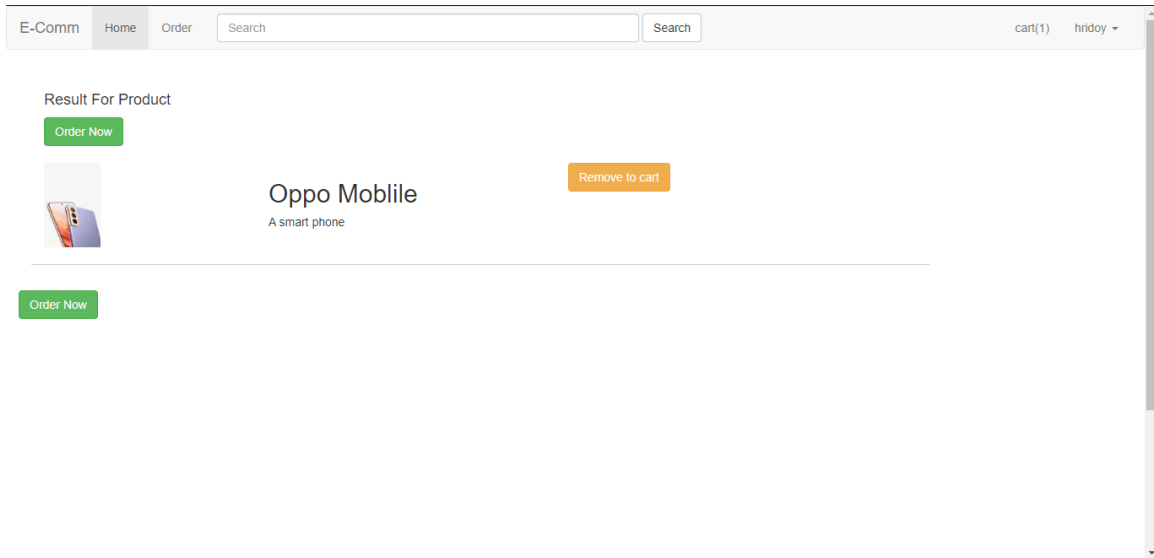


Figure 4.3.8: User add to cart interface

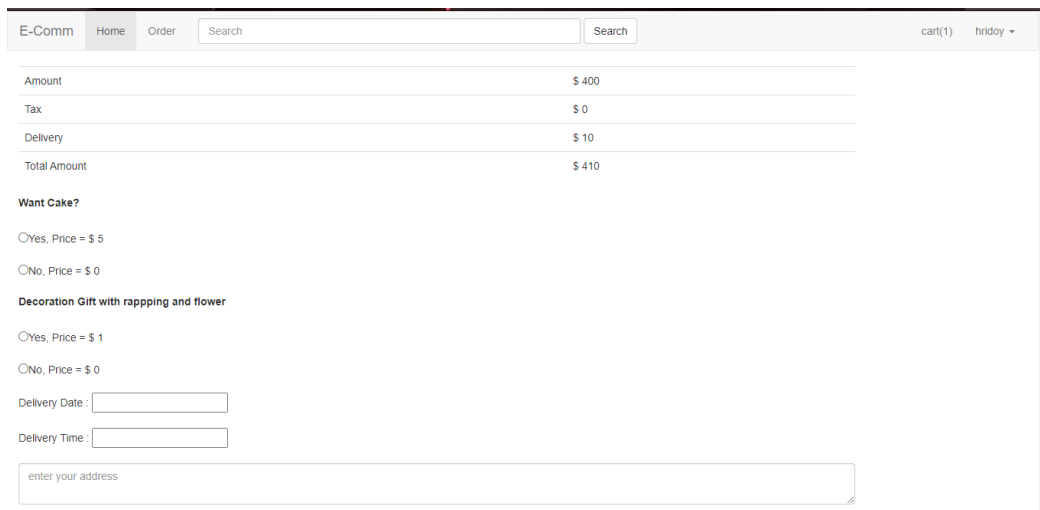


Figure: 4.3.9: Order view

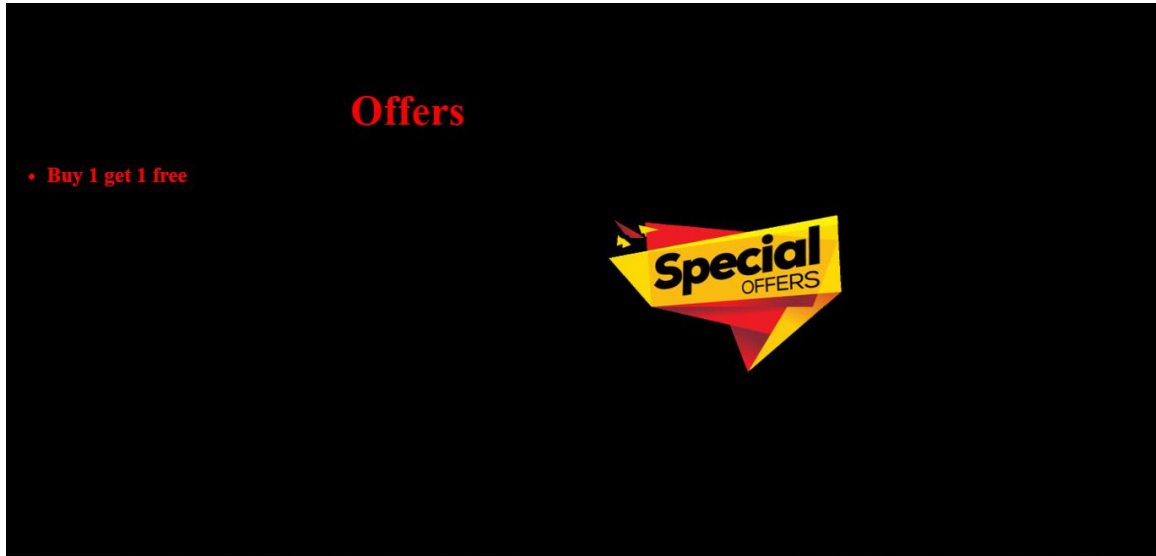


Figure 4.3.10: User offers a view

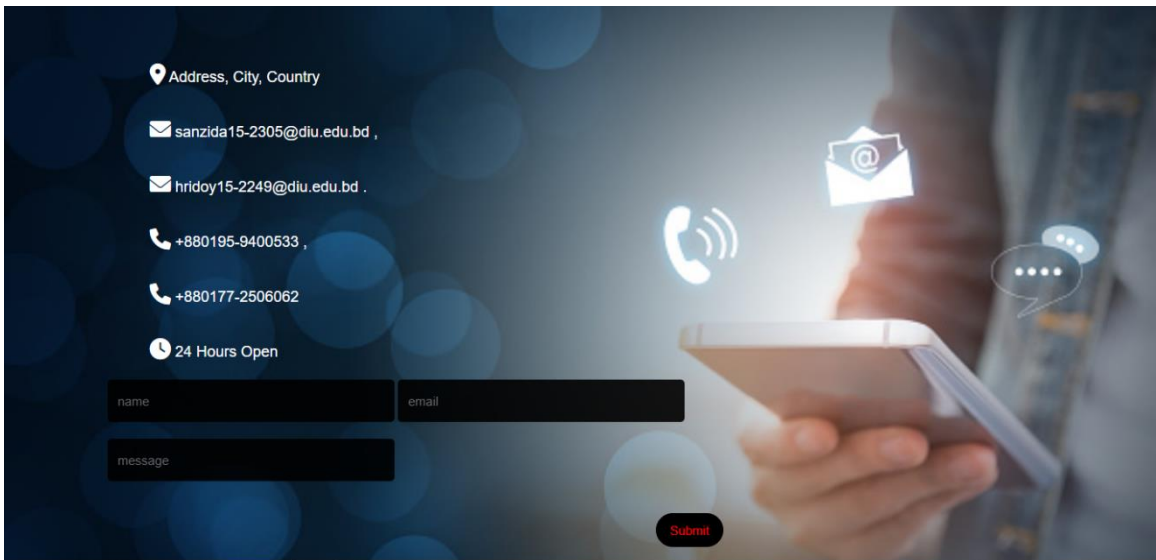


Figure 4.3.11: Contact view

Courier Something

Enter Sender Name

Enter Sender Phone

Enter Sender Address

Enter Receiver Name

Enter Receiver Phone




Figure 4.3.12: User Courier Gift

ABOUT US

We are a e-commerce side and gift receiver in customer given time

Santa Claus, legendary figure who is the traditional patron of Christmas in the United States and other countries, bringing gifts to children. His popular image is based on traditions associated with Saint Nicholas, a 4th-century Christian saint. Father Christmas fills the role in many European countries

We are as Santa Claus.Those who can not reach there spacial person in spacial time, we always ready to reach happiness in time.We surprises in birthday,anniversary etc.Includes Our products we also decorate gift, give cake to make the moment more spacial.We also courier your gift.

Note : Must order products or courier before two days otherwise it can be cancelled.




Figure: 4.3.13: About Us page



Figure 4.3.14: Administrator authentication checking page



Figure: 4.3.15: Administrator Option view

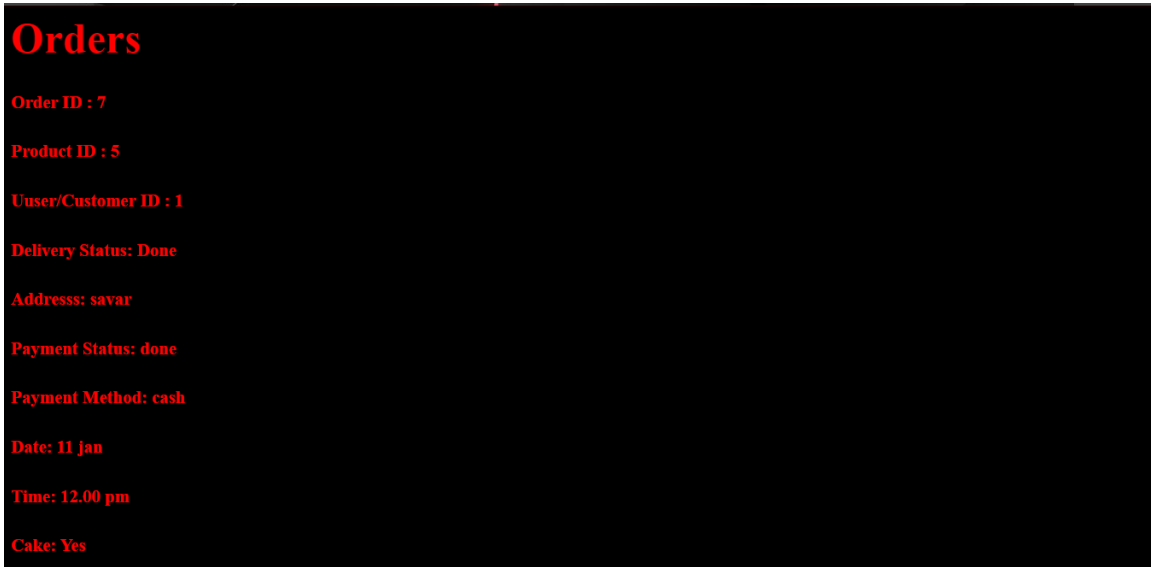


Figure 4.3.16: Administrator Orders view

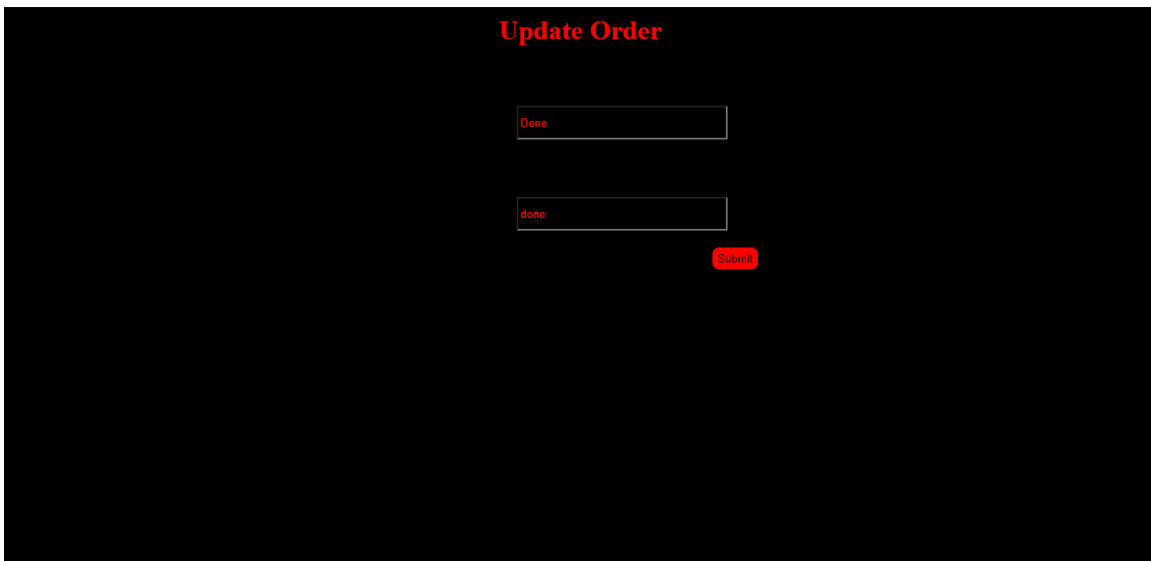


Figure: 4.3.17: Administrator update order

User List

Id	Name	Email	Delete
1	hridoy	hridoy@gmail.com	Delete
7	Rudro	rudro@gmail.com	Delete

Figure: 4.3.18: Administrator user list view

Add Product

Figure: 4.3.19: Administrator inserts product

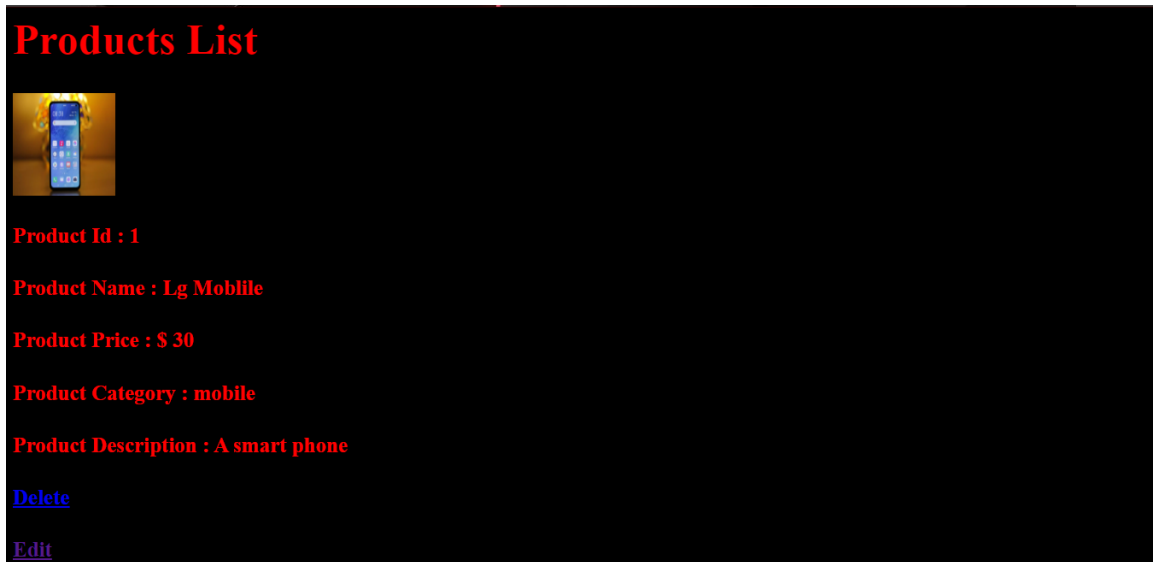


Figure: 4.3.20: Administrator product view

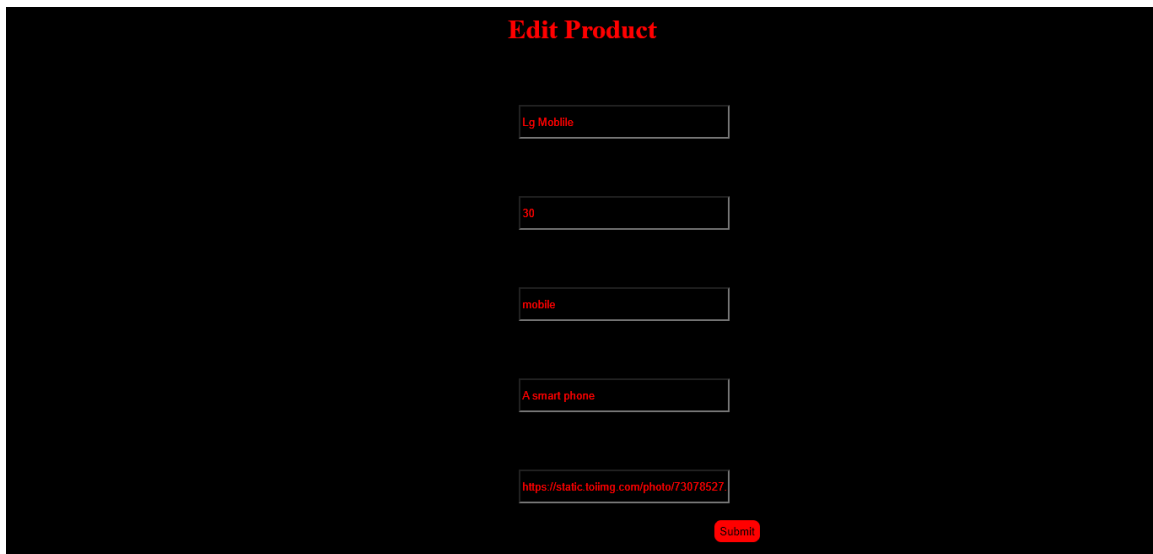


Figure: 4.3.21: Administrator update product

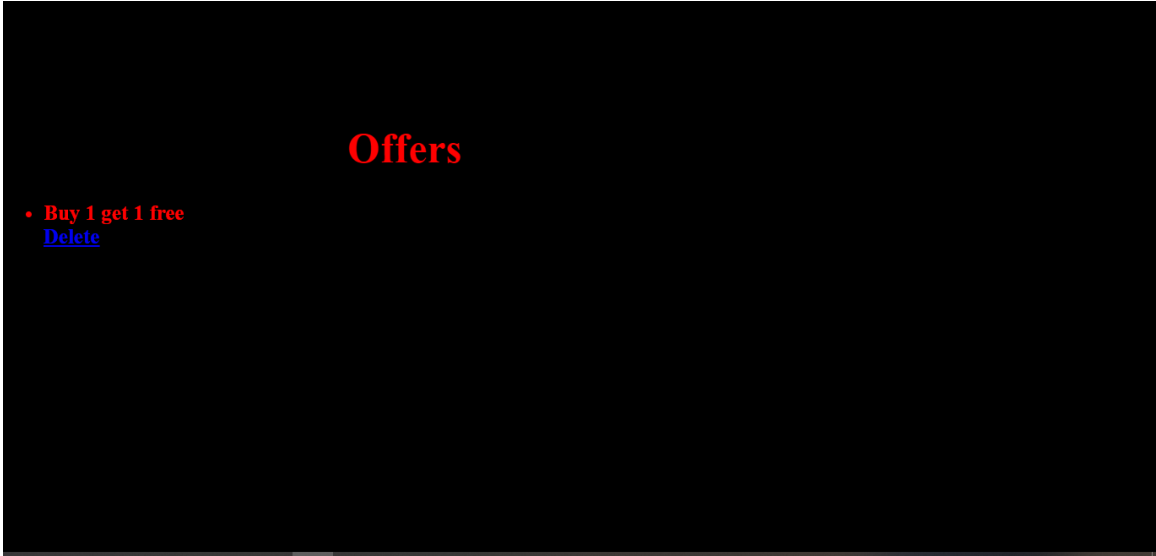


Figure: 4.3.22: Administrator cancel offers

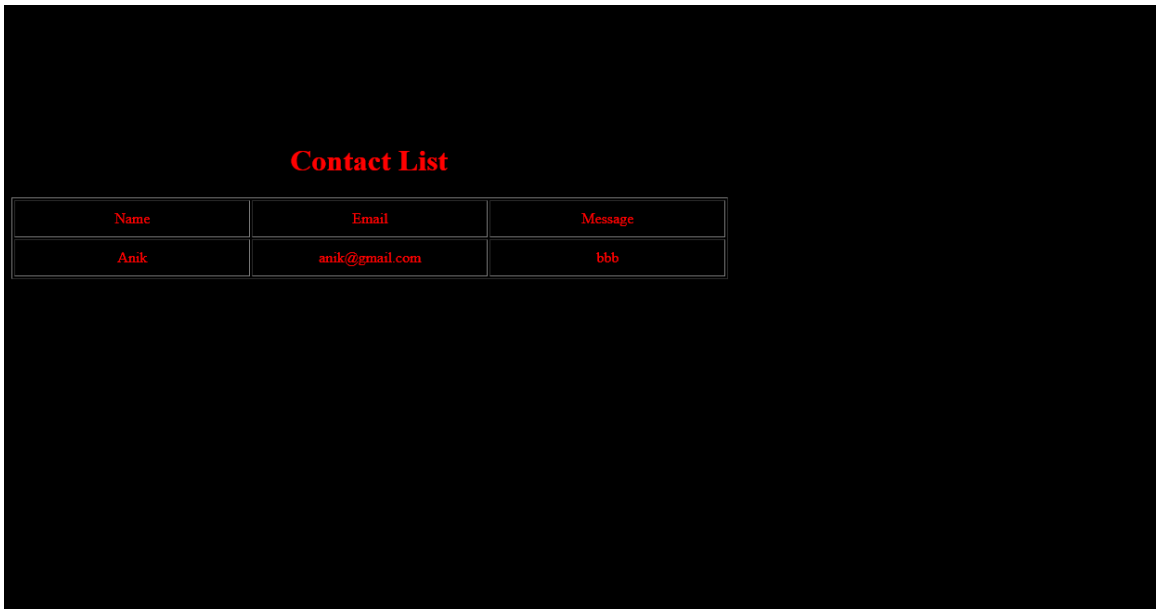


Figure: 4.3.22: Administrator contact view

View Courier List

Courier Id : 2

Sender Name : Hridoy

Sender Phone : 018

Sender Address : savar

Recevier Name : sanzida

Recevier Phone : 019

Recevier Address : dhaka

Receviel Date : 12 feb

Figure: 4.3.23: Administrator view courier

CHAPTER 5

Testing and implementation

5.1 Database Implementation

We made our database desk via means of the use of Laravel migration. We have finished the following command to migrate all of the tables "PHP artisan serve".

Since MySQL is a version controller database, we didn't want direct questions to carry out actions. We can get entry to our database via means of beginning a MySQL server from XAMPP and going to HTTP: // localhost / PHPMyAdmin /.

5.2 Front-end Implementation

Our fundamental objective was to plan a front finish to guarantee a basic UI to understudies. So that we have participated to make our site pages as easy as could really be needed. We additionally remembered that the plan ought to be alluring and simple to utilize while executing the front-end plan. We, consequently, utilized the receptive bootstrap strategy to make our site responsive. Our front-end configuration incorporates the accompanying: Simple but attractive homepage design.

- Basic however alluring landing page plan.
- Effectively justifiable the site.
- Easy to understand enrollment and login page.
- Alluring and simple to-utilize ticket booking framework plan

5.3 Testing Implementation

Testing programming is cute much as significant as creating the project. We made an honest effort to make our electronic framework simple and secure. In this way, we have performed testing by carrying out some experiments for our framework. Our testing report is displayed in the accompanying table 5.1:

Table 5.3: Testing report

Test No.	Description	Test Data	Expected Result	Actual Result
01	By tapping the login button with a valid email and the wrong secret phrase	Email: hridoy15-2249@diu.edu.bd Password: 19876	Wrong username or password	Pass
02	During the enrollment check, the information mail is as of now enrolled	Email: hridoy@gmail.com	Email already taken	Pass
03	By tapping the login option with an invalid email or secret word or both.	Email="nodemo@diu.edu.bd" Password="000"	No user with this email	Pass
04	By tapping the login option with a correct email and secret key	Email:" rudro@gmail.com" Password:"12345"	To see the home view.	Pass

CHAPTER 6

Impact on society and sustainability

6.1 Impact on society

Through the framework, that will be not difficult to control the exercises and administrations of the college transport. By seeing this framework and the board, other college school universities will consider carrying out this framework for their understudies.

6.1 Impact on environment and sustainability

Santa Claus is the project to help the needy needs of the general public in a way that is the most un-damageable to the climate and doesn't weaken the portability needs of people in the future. The extension of this transient system into the idea of manageability incorporates three significant support points:

- **Social equity.** Social worth is regularly the most troublesome part of the possibility of reasonability to portray. It should not be confused with correspondence of result, where uncalled-for rehearses are executed for one monetary get-together and against one more with the communicated objective to embrace a correction of seen variations.
- **Economic efficiency.** Concerns conditions enable more raised degrees of monetary viability in regard to resource and work use. It bases on limits, earnestness, versatility in progress, and giving work and items that supply market revenue.
- **Environmental responsibility.** It incorporates cultivating an impression of human activity, which is lesser than the constraint of the environment to oblige. This integrates the stock of resources and the safeguarded expulsion of waste. Its focal standards consolidate the conservation and reuse of things and resources.

CHAPTER 7

Conclusion and future scope

7.1 Conclusion

The object of this undertaking arrived at one gift to their spatial one in spatial time. We the get rationale from Santa to make the site. One can arrange gifts from our site. We are reached to gift their gift at their given time and given date. We likewise dispatch client gift things at their given time and given date. All things considered, clients need to top off a structure. Our group gather their gift and arrived at their gift date and in time. Clients can add rapping, cake, and bloom to make the festival more spatial. We want to arrive at satisfaction. Surprises and gifts are too important to a relationship. But always one can not reach their spatial one in spatial time. We are always ready to help this kind of people. We are getting the idea from Santa

7.2 Scope Of Further Development

- We will add more features to improve our design.
- There will be an e-mail verification system.
- We will be adding the SSL security system.
- The SMS alert system is simpler for the customer.
- We are also working on the integration of the online payment gateway.
- In fact, this is just the beginning.
- The supplemental system can be used in various other types of revision processes.

References:

- [1] Stack Overflow, Last Update: fifth April 2019[Online], Available: <https://stackoverflow.com/questions/7695044/what-does-doctype-html-do>
- [2] Bootstrap · The world's most popular flexible first and responsive front-end structure. (n.d.).
- [3] Retrieved February 14, 2015, from <https://getbootstrap.com/docs/4.0/models/>
- [4] Xampp Server. (n.d.). Recuperated February 10, 2017. URL: <http://www.xamppserver.com/>
- [5] Pressman, Roger S. Programming: A Practitioner's Approach. fifth ed. Boston: McGraw Hill, 2004.
- [6] Kendall, E. Kendall. Structure Analysis and Design. fourth form New Delhi: Prentice Hall. 1999.
- [7] O'Brien, James, and M. Markas, George. The board Information System. eighth International ed.2008.
- Available from: [http://www.slideshare.net/EmertxeSlides/preamble to-UML-37999777](http://www.slideshare.net/EmertxeSlides/preamble-to-UML-37999777)
- [8] W3School, Last Update fourth May 2019[Online], Available: <https://www.w3.org/QA/Tips/Doctype>
- [9] Schacherbauer, W., et al. "A block withdrawal strategy for the usage in multiband programming radio frontend plan." 2000 30th European Microwave Conference. IEEE, 2000.
- [10] Schacherbauer, W., Ostertag, T., Ruppel, C.C.W., Springer, A. additionally, Weigel, R., 2000, October. An hindrance scratch-off method for the usage in multiband programming radio frontend plan. In 2000 30th European Microwave Conference (pp. 1-4). IEEE.
- [11] Langwieser, Robert, Gregor Lasser, Christoph Angerer, Markus Rupp, and Arpad L. Scholtz. "A segregated UHF peruser frontend for a versatile RFID testbed." In The second Int. EURASIP Workshop on RFID Development. 2008.
- [12] Wind, J., et al. "Purposeful overview of further developed recovery programs in colonic operation." British Journal of Surgery: Incorporating European Journal of Surgery and Swiss Surgery 93.7 (2006): 800-809.
- [13] Ahmadian, Maryam, et al. "Desnutrin/ATGL is overseen by AMPK and is normal for an earthy colored fat total." Cell assimilation 13.6 (2011): 739-748.
- [14] Ahmadian, M., Abbott, M.J., Tang, T., Hudak, C.S., Kim, Y., Bruss, M., Hellerstein, M.K., Lee, H.Y., Samuel, V.T., Shulman, G.I. likewise, Wang, Y., 2011. Destin/ATGL is constrained by AMPK and is required for an earthy colored fat total. Cell processing, 13(6), pp.739-748.
- [15] Hogan, Brian P. HTML5 and CSS3: make with the forthcoming standards today. Calm Bookshelf, 2011.
- [16] Chen, Edward Y., et al. "Enrichr: wise and helpful HTML5 quality overview improvement assessment instrument." BMC Bioinformatics 14.1 (2013): 128.

1

ORIGINALITY REPORT

27%
SIMILARITY INDEX

24%
INTERNET SOURCES

7%
PUBLICATIONS

16%
STUDENT PAPERS

PRIMARY SOURCES

1	dspace.daffodilvarsity.edu.bd:8080 Internet Source	18%
2	Submitted to Daffodil International University Student Paper	5%
3	Alkhalefah, Alla. "Impact of Maternal Intermittent Fasting During Pregnancy on Fetal Growth and Cardio-Renal Function in Adult Rat Offspring.", The University of Manchester (United Kingdom), 2021 Publication	1%
4	Submitted to University of Bedfordshire Student Paper	1%
5	Submitted to St. Petersburg High School Student Paper	1%
6	Submitted to Asia Pacific University College of Technology and Innovation (UCTI) Student Paper	<1%
7	Submitted to Eastern Visayas State University Student Paper	<1%